

**COLORADO DEPARTMENT OF CORRECTIONS
MONTHLY POPULATION AND CAPACITY REPORT
AS OF FEBRUARY 28, 2007**

6-Mar-07

	01/31/07	CAPACITY CHANGES	------ 02/28/07 -----		------ 02/28/06 -----	
	OPERATIONAL CAPACITY*		OPERATIONAL CAPACITY*	ON-GRDS POPULATION	OPERATIONAL CAPACITY*	ON-GRDS POPULATION
COLO STATE PENITENTIARY	756		756	748	756	751
CENTENNIAL CORR FAC	336		336	316	336	319
STERLING CORR FAC	2,445	96	2,541	2,513	2,445	2,405
LIMON CORR FAC	953		953	944	953	943
ARK VALLEY CORR FAC	1,007		1,007	1,001	1,007	1,000
BUENA VISTA CORR FAC	826		826	807	826	818
BUENA VISTA MIN CTR	292		292	287	292	287
COLO TERR CORR FAC	786		786	777	786	789
FORT LYON CORR FAC	500		500	494	500	485
FREMONT CORR FAC	1,471		1,471	1,422	1,471	1,459
LA VISTA CORR FAC	472		472	466	0	0
ARROWHEAD CORR CTR	494		494	491	494	490
FOUR MILE CORR CTR	499		499	495	499	493
PUEBLO MINIMUM CTR	0		0	0	256	249
TRINIDAD CORR FAC	484		484	477	484	478
S.T.U. at Y.O.S.	30		30	29	30	26
SKYLINE CORR CTR	249		249	248	249	249
COLORADO CORR CTR	150		150	134	150	136
DELTA CORR CTR	484		484	464	484	464
RIFLE CORR CTR	192		192	184	192	192
COLO CORR ALT PROGRAM	100		100	88	100	98
COLO WOMEN'S CORR FAC	224		224	218	224	223
DENVER WOMEN'S CORR FAC	900		900	766	900	879
DENVER REC DIAG CTR	480		480	489	480	452
SAN CARLOS CORR FAC	255		255	245	255	252
SUBTOTAL	14,385	96	14,481	14,103	14,169	13,937
CONTRACTS:						
BENT COUNTY CORR CTR	724		724	668	724	681
HUERFANO COUNTY CORR CTR	774		774	704	778	737
CROWLEY COUNTY CORR FAC	1,720		1,720	1,505	1,820	1,175
KIT CARSON COUNTY CORR FAC	820		820	720	820	737
CHEYENNE MTN REENTRY CTR	500		500	480	500	387
BRUSH CORR FAC	270		270	256	270	229
NORTH FORK OK CORR FAC	480		480	480	0	0
OFF-GROUNDS POPULATION:				237		245
ESCAPEES/WALKAWAYS				244		268
REVOCATIONS-JAIL				0		0
JAIL BACKLOG:						
BACKLOG LESS THAN 72 HOURS			143		104	
BACKLOG GREATER THAN 72 HOURS (FISCAL YTD AVE = 384)			199		331	
BACKLOG-PAROLEES AWAITING TRANSFER			63		95	
TOTAL JAIL BACKLOG				405		530
COUNTY JAIL CONTRACTS				64		31
COMMUNITY CORRECTIONS						
COMMUNITY						
RESIDENTIAL	1,289	27	1,316	1,316	1,255	1,255
PAROLE REVOCATIONS	1	-1	0	0	0	0
REVOKED-RET TO CUST	232	-1	231	231	214	214
NON-RESIDENTIAL	71	-27	44	44	68	68
REGRESSIONS	31	8	39	39	35	35
TOTAL COMMUNITY	1,624	6	1,630	1,630	1,572	1,572
ISP						
RESIDENTIAL	864	-7	857	857	825	825
NON-RESIDENTIAL	38	1	39	39	37	37
REGRESSIONS	8	3	11	11	16	16
TOTAL ISP	910	-3	907	907	878	878
TOTAL COMM. CORRECTIONS	2,534	3	2,537	2,537	2,450	2,450
MALE POPULATION			20,080		19,276	
FEMALE POPULATION			2,323		2,131	
TOTAL INMATE JURISDICTIONAL POPULATION				22,403		21,407

*OPERATIONAL CAPACITY INCLUDES ALL BEDS AVAILABLE FOR USE, INCLUDING MANAGEMENT CONTROL UNITS, BUT EXCLUDES EMERGENCY DOUBLE BUNKING

**COLORADO DEPARTMENT OF CORRECTIONS
MONTHLY POPULATION AND CAPACITY REPORT
AS OF FEBRUARY 28, 2007**

6-Mar-07

CURRENT MONTH CHANGES IN CAPACITY:

Feb-07	STERLING CORR FAC	INCREASE CAPACITY	96
--------	-------------------	-------------------	----

NET MONTHLY GROWTH RATE:

CURRENT MONTH	8
FISCAL YEAR-TO-DATE AVERAGE	49

YOUTHFUL OFFENDER SYSTEM

	----- 02/28/07 -----			02/28/06
	PUEBLO	CONTRACT FACILITIES	COMM. CORR.	TOTAL POPULATION
INTAKE/IDO	1			9
RFP/REMEDICATION	8			12
PHASE I	156	0		138
PHASE II	9			15
PHASE III	0		32	40
OFF GROUNDS/BACKLOG				2
TOTAL Y.O.S. POPULATION	174	0	32	216

	CURRENT MONTH	FISCAL YR. TO DATE
YOS ADMISSIONS	4	43
YOS RELEASES:		
COMPLETION OF SENTENCE	2	35
JUDICIAL RELEASE TO PROB/CT ORD DISCHG	0	2
JUDICIAL TRANSFER TO DOC	0	0
TERMINATION/FAILURE	1	8
DECEASED	0	1
TOTAL RELEASES	3	46

PAROLE CASELOAD

	----- 02/28/07 -----			----- 01/31/07 -----		----- 02/28/06 -----	
	DOMESTIC	INTERST PAR/PROB	TOTAL CASELOAD	DOMESTIC	TOTAL CASELOAD	DOMESTIC	TOTAL CASELOAD
DENVER REGION							
REGULAR	2,333	100	2,433	2,271	2,183	1,739	1,843
ISP	446		446	430	430	622	622
SUBTOTAL	2,779	100	2,879	2,701	2,800	2,361	2,465
NORTHEAST REGION							
REGULAR	1,662	50	1,712	1,684	1,485	1,203	1,238
ISP	203		203	215	215	299	299
SUBTOTAL	1,865	50	1,915	1,899	1,950	1,502	1,537
SOUTHEAST REGION							
REGULAR	1,453	84	1,537	1,421	1,332	1,098	1,161
ISP	223		223	224	224	214	214
SUBTOTAL	1,676	84	1,760	1,645	1,729	1,312	1,375
WESTERN REGION							
REGULAR	616	39	655	612	630	489	528
ISP	105		105	92	92	97	97
SUBTOTAL	721	39	760	704	743	586	625
TOTAL CASELOAD							
REGULAR	6,064	273	6,337	5,988	6,261	4,529	4,770
ISP	977		977	961	961	1,232	1,232
TOTAL	7,041	273	7,314	6,949	7,222	5,761	6,002
ADDITIONAL CASELOAD:							
OUT-OF-STATE PAROLEES			1,763		1,756		1,606
PAROLEE ABSCONDERS			773		750		642

**COLORADO DEPARTMENT OF CORRECTIONS
MONTHLY POPULATION AND CAPACITY REPORT
AS OF FEBRUARY 28, 2007**

	02/28/2007 Population			----- FINAL CUSTODY DESIGNATION* -----					
	On-Grds.	Off-Grds.	Total	Uncls.	Ad.Seg	Close	Medium	Min.-Res.	Minimum
Male Population									
COLO STATE PENITENTIARY	748	4	752		751		1		
CENTENNIAL CORR FAC	316	2	318		134	165	3	10	6
STERLING CORR FAC	2,513	21	2,534		241	752	548	595	398
LIMON CORR FAC	944	7	951		11	706	165	54	15
ARK VALLEY CORR FAC	1,001	14	1,015		2	472	339	141	61
BUENA VISTA CORR FAC	807	17	824		9	409	251	105	50
BUENA VISTA MIN CTR	287	7	294				2	219	73
COLO TERR CORR FAC	776	8	784	1	5	190	243	196	149
FORT LYON CORR FAC	494	10	504		2	36	263	116	87
FREMONT CORR FAC	1,422	10	1,432		6	147	402	557	320
ARROWHEAD CORR CTR	491	3	494				3	277	214
FOUR MILE CORR CTR	495	5	500			1	0	341	158
TRINIDAD CORR FAC	477	7	484		2		3	422	57
S.T.U. at Y.O.S.	29	0	29				17	12	0
SKYLINE CORR CTR	248	0	248						248
COLORADO CORR CTR	134	0	134					3	131
DELTA CORR CTR	464	6	470					2	468
RIFLE CORR CTR	184	0	184				2	1	181
COLO CORR ALT PROGRAM	82	3	85					10	75
DENVER REC DIAG CTR	485	9	494	166	5	41	95	126	61
SAN CARLOS CORR FAC	245	5	250		24	106	50	36	34
CONTRACTS:									
BENT COUNTY CORR CTR	668	21	689			12	325	199	153
HUERFANO COUNTY CORR CTR	704	14	718			18	359	204	137
CROWLEY COUNTY CORR FAC	1,505	24	1,529			7	828	466	228
KIT CARSON COUNTY CORR FAC	720	14	734		2	18	382	222	110
CHEYENNE MTN REENTRY CTR	480	4	484			0	128	235	121
NORTH FORK OK CORR FAC	480	0	480			1	275	157	47
COMMUNITY/ISP	1,729	69	1,798			4	41	51	1,702
Total Classified Male Population	18,928	284	19,212	167	1,194	3,085	4,725	4,757	5,284
Percent of Total				0.9%	6.2%	16.1%	24.6%	24.8%	27.5%
Unclassified Facilities:									
JAIL BACKLOG	355	2	357						
COUNTY JAIL CONTRACTS	58	6	64						
REVOKED TO COMM CTR	0	0	0						
REVOKED-RET TO CUST FAC	166	35	201						
COMM/ISP REGRESSIONS	0	42	42						
ESCAPEES/WALKAWAYS	42	162	204						
Total Unclassified Facilities	621	247	868						
Total Male Population	19,549	531	20,080						
Female Population									
COLO WOMEN'S CORR FAC	218	2	220			56	55	53	56
DENVER WOMEN'S CORR FAC	766	5	771	15	27	136	119	275	199
LA VISTA CORR FAC	466	9	475			43	112	199	121
COLO CORR ALT PROGRAM	6	0	6					1	5
DENVER REC DIAG CTR INF	4	0	4				2	1	1
COLO TERR CORR FAC INF.	1	0	1				1		
CONTRACTS:									
BRUSH CORR FAC	256	6	262			1	48	131	82
COMMUNITY/ISP	444	14	458			3	10	28	417
Total Classified Female Population	2,161	36	2,197	15	27	239	347	688	881
Percent of Total				0.7%	1.2%	10.9%	15.8%	31.3%	40.1%
Unclassified Facilities:									
JAIL BACKLOG	46	2	48						
COUNTY JAIL CONTRACTS	0	0	0						
REVOKED TO COMM CTR	0	0	0						
REVOKED-RET TO CUST FAC	27	3	30						
COMM/ISP REGRESSIONS	0	8	8						
ESCAPEES/WALKAWAYS	1	39	40						
Total Unclassified Facilities	74	52	126						
Total Female Population	2,235	88	2,323						

COLORADO DEPARTMENT OF CORRECTIONS
ADULT INMATE JURISDICTIONAL POPULATION (1)

DATE: 3/6/2007

DATE	MALE POPULATION			FEMALE POPULATION			TOTAL POPULATION		
	Male Population	Net Change	Fiscal Y-T-D Average	Female Population	Net Change	Fiscal Y-T-D Average	Total Population	Net Change	Fiscal Y-T-D Average
02-28-07	20,080	7	36	2,323	1	13	22,403	8	49
01-31-07	20,073	43		2,322	2		22,395	45	
12-31-06	20,030	12		2,320	6		22,350	18	
11-30-06	20,018	44		2,314	11		22,332	55	
10-31-06	19,974	46		2,303	28		22,277	74	
09-30-06	19,928	139		2,275	33		22,203	172	
08-31-06	19,789	-34		2,242	-7		22,031	-41	
07-31-06	19,823	31		2,249	29		22,072	60	
06-30-06	19,792	153		2,220	25		22,012	178	
05-31-06	19,639	114		2,195	13		21,834	127	
04-30-06	19,525	89		2,182	28		21,707	117	
03-31-06	19,436	160		2,154	23		21,590	183	
02-28-06	19,276	31		2,131	-4		21,407	27	
01-31-06	19,245	53		2,135	-9		21,380	44	
12-31-05	19,192	117	97	2,144	7	12	21,336	124	109
11-30-05	19,075	32		2,137	9		21,212	41	
10-31-05	19,043	43		2,128	13		21,171	56	
09-30-05	19,000	71		2,115	-7		21,115	64	
08-31-05	18,929	183		2,122	19		21,051	202	
07-31-05	18,746	115		2,103	30		20,849	145	
06-30-05	18,631	123		2,073	43		20,704	166	
05-31-05	18,508	70		2,030	16		20,538	86	
04-30-05	18,438	102		2,014	32		20,452	134	
03-31-05	18,336	79		1,982	-10		20,318	69	
02-28-05	18,257	30		1,992	26		20,249	56	
01-31-05	18,227	-2		1,966	51		20,193	49	
12-31-04	18,229	56	68	1,915	11	27	20,144	67	95
11-30-04	18,173	79		1,904	27		20,077	106	
10-31-04	18,094	99		1,877	24		19,971	123	
09-30-04	17,995	-18		1,853	44		19,848	26	
08-31-04	18,013	95		1,809	44		19,822	139	
07-31-04	17,918	104		1,765	10		19,683	114	
06-30-04	17,814		49	1,755		11	19,569		60
06-30-03	17,226		57	1,620		10	18,846		67
06-30-02	16,539		87	1,506		14	18,045		101
06-30-01	15,493		63	1,340		6	16,833		70
06-30-00	14,733		99	1,266		7	15,999		106
06-30-99	13,547		75	1,179		14	14,726		89
06-30-98	12,647		81	1,016		9	13,663		89
06-30-97	11,681			909			12,590		

(1) Adult inmate jurisdictional population includes on-grounds, off-grounds, out-of-state, escapees, and jail backlog and excludes offenders sentenced to the Youthful Offender System (Y.O.S.).

COLORADO DEPARTMENT OF CORRECTIONS
ADULT INMATE RELEASES FROM PRISON
TOTAL Population (Male and Female)

(Revised) Date: 4/16/2007

	Parole				Discharge					Other				Total
	Discretionary*	Mandatory*	Mand. Repar.*	Com. Supv.	Sentence	H.B. 1087	Martin/Cooper	Chgs/Det.	Com Spv. Elim	Probation	Ct. Ord. Dsch.	Appeal Bond	Deceased	
Feb-07	405	235	80	0	24	58	12	19	0	15	5	0	0	853
Jan-07	542	192	42	0	37	59	5	15	0	15	16	0	9	932
Dec-06	349	179	59	0	27	44	10	14	0	13	6	1	2	704
Nov-06	422	202	70	0	30	45	12	12	0	16	11	0	6	826
Oct-06	426	186	84	0	36	44	11	10	0	6	7	1	5	816
Sep-06	348	180	65	0	29	44	13	15	0	13	7	0	2	716
Aug-06	430	239	104	0	37	52	10	21	0	17	11	0	2	923
Jul-06	350	174	87	0	43	52	9	20	0	17	6	0	7	765
Jun-06	375	199	89	0	37	43	10	16	0	16	7	0	2	794
May-06	317	235	75	0	34	52	10	15	0	13	9	0	3	763
Apr-06	227	235	91	0	41	54	17	17	0	10	7	0	8	707
Mar-06	305	282	113	0	39	46	10	12	0	18	5	1	2	833
Feb-06	305	250	71	0	34	39	13	10	0	27	14	0	1	764
Jan-06	316	218	75	0	45	51	11	14	0	13	6	0	7	756
Dec-05	235	238	98	0	51	47	15	17	0	18	12	0	6	737
Nov-05	183	297	126	0	37	55	7	13	0	10	18	0	5	751
Oct-05	157	304	130	0	34	58	11	19	0	17	10	1	5	746
Sep-05	142	318	90	0	30	61	17	14	0	23	6	0	3	704
Aug-05	124	312	109	0	33	47	17	20	0	14	11	0	6	693
Jul-05	121	306	109	0	46	48	13	13	0	15	9	0	8	688
Jun-05	144	312	105	0	28	57	13	16	0	22	13	0	0	710
May-05	148	313	95	0	42	61	8	14	0	16	7	1	7	712
Apr-05	121	313	125	0	40	57	9	20	0	18	12	0	10	725
Mar-05	155	311	100	0	46	64	15	21	0	24	11	1	4	752

Definitions of Release Types

Discretionary parole-Released to parole through Parole Board discretion prior to mandatory release or sentence discharge date.

Mandatory parole-Released to parole on mandatory release date.

Mand. Repar-Reparoled on specific date set by Parole Board (includes S.B. 252 reparoles). n/a - breakout not available prior to June 2004.

Com. Supv.-Released to serve 12 months of community supervision.

Sentence discharge-Completion of sentence with no further supervision.

H.B. 1087 discharge-Completion of sentence with no further supervision, subject to earn time provisions of H.B. 95-1087.

Martin/ Cooper discharge-Completion of sentence with no further supervision, sex offender subject to Martin/Cooper Supreme Court decision.

Chgs/ Det. discharge-Completion of sentence, released to other law enforcement for pending charges or detainees.

Com. Spv. Elim discharge-Completion of sentence following reincarceration on community supervision sentence.

Probation-Released by court to probation.

Ct. Ord. Dsch.-Released by court order.

Appeal Bond-Released by court to appeal bond.

Deceased-Offender death in prison.

***Due to the decrease in community transportation services, the Department implemented a procedural change in December 2005 with regards to releasing inmates on weekends. As a result of this change, discretionary releases have increased and mandatory releases have decreased.**

COLORADO DEPARTMENT OF CORRECTIONS

ADULT INMATE RELEASES FROM PRISON

Male Population Only

(Revised) Date: 4/16/2007

	Parole				Discharge					Other				Total
	Discretionary*	Mandatory*	Mand. Repar.*	Com. Supv.	Sentence	H.B. 1087	Martin/Cooper	Chgs/Det.	Com Spv. Elim	Probation	Ct. Ord. Dsch.	Appeal Bond	Deceased	
Feb-07	330	209	71	0	23	51	11	16	0	14	5	0	0	730
Jan-07	453	169	37	0	34	53	5	15	0	14	13	0	7	800
Dec-06	298	160	56	0	24	38	10	14	0	13	6	1	2	622
Nov-06	358	178	62	0	28	42	12	12	0	13	10	0	6	721
Oct-06	373	163	73	0	34	36	11	9	0	6	6	1	5	717
Sep-06	300	148	59	0	29	40	13	12	0	12	7	0	2	622
Aug-06	364	209	89	0	34	44	10	21	0	14	10	0	2	797
Jul-06	310	158	72	0	40	45	9	18	0	15	4	0	7	678
Jun-06	325	180	74	0	32	41	10	13	0	15	6	0	2	698
May-06	269	202	60	0	33	47	10	15	0	12	8	0	3	659
Apr-06	178	213	79	0	35	47	17	16	0	9	6	0	8	608
Mar-06	267	246	100	0	36	41	10	12	0	14	5	1	2	734
Feb-06	253	220	63	0	33	37	13	10	0	25	14	0	1	669
Jan-06	266	187	63	0	43	48	11	13	0	12	5	0	6	654
Dec-05	193	204	84	0	48	43	15	17	0	16	11	0	4	635
Nov-05	156	251	114	0	32	47	7	12	0	10	17	0	4	650
Oct-05	127	273	101	0	32	50	11	17	0	15	10	1	4	641
Sep-05	111	283	78	0	26	57	16	12	0	22	6	0	3	614
Aug-05	98	280	94	0	31	41	17	19	0	12	8	0	6	606
Jul-05	100	253	95	0	43	47	13	13	0	11	8	0	8	591
Jun-05	113	280	94	0	25	52	13	13	0	20	13	0	0	623
May-05	127	270	83	0	39	54	8	14	0	15	6	1	6	623
Apr-05	103	270	109	0	37	49	9	20	0	16	8	0	10	631
Mar-05	129	275	82	0	43	62	15	19	0	23	10	1	4	663

Definitions of Release Types

Discretionary parole-Released to parole through Parole Board discretion prior to mandatory release or sentence discharge date.

Mandatory parole-Released to parole on mandatory release date.

Mand. Repar-Reparoled on specific date set by Parole Board (includes S.B. 252 reparoles). n/a - breakout not available prior to June 2004.

Com. Supv.-Released to serve 12 months of community supervision.

Sentence discharge-Completion of sentence with no further supervision.

H.B. 1087 discharge-Completion of sentence with no further supervision, subject to earn time provisions of H.B. 95-1087.

Martin/ Cooper discharge-Completion of sentence with no further supervision, sex offender subject to Martin/Cooper Supreme Court decision.

Chgs/ Det. discharge-Completion of sentence, released to other law enforcement for pending charges or detainees.

Com. Spv. Elim discharge-Completion of sentence following reincarceration on community supervision sentence.

Probation-Released by court to probation.

Ct. Ord. Dsch.-Released by court order.

Appeal Bond-Released by court to appeal bond.

Deceased-Offender death in prison.

***Due to the decrease in community transportation services, the Department implemented a procedural change in December 2005 with regards to releasing inmates on weekends. As a result of this change, discretionary releases have increased and mandatory releases have decreased.**

COLORADO DEPARTMENT OF CORRECTIONS
ADULT INMATE RELEASES FROM PRISON
Female Population Only

Date: 3/6/2007

	Parole				Discharge					Other				Total
	Discretionary*	Mandatory*	Mand. Repar.*	Com. Supv.	Sentence	H.B. 1087	Martin/Cooper	Chgs/Det.	Com Spv. Elim	Probation	Ct. Ord. Dsch.	Appeal Bond	Deceased	
Feb-07	75	26	9	0	1	7	1	3	0	1	0	0	0	123
Jan-07	89	23	5	0	3	6	0	0	0	1	3	0	2	132
Dec-06	51	19	3	0	3	6	0	0	0	0	0	0	0	82
Nov-06	64	24	8	0	2	3	0	0	0	3	1	0	0	105
Oct-06	53	23	11	0	2	8	0	1	0	0	1	0	0	99
Sep-06	48	32	6	0	0	4	0	3	0	1	0	0	0	94
Aug-06	66	30	15	0	3	8	0	0	0	3	1	0	0	126
Jul-06	40	16	15	0	3	7	0	2	0	2	2	0	0	87
Jun-06	50	19	15	0	5	2	0	3	0	1	1	0	0	96
May-06	48	33	15	0	1	5	0	0	0	1	1	0	0	104
Apr-06	49	22	12	0	6	7	0	1	0	1	1	0	0	99
Mar-06	38	36	13	0	3	5	0	0	0	4	0	0	0	99
Feb-06	52	30	8	0	1	2	0	0	0	2	0	0	0	95
Jan-06	50	31	12	0	2	3	0	1	0	1	1	0	1	102
Dec-05	42	34	14	0	3	4	0	0	0	2	1	0	2	102
Nov-05	27	46	12	0	5	8	0	1	0	0	1	0	1	101
Oct-05	30	31	29	0	2	8	0	2	0	2	0	0	1	105
Sep-05	31	35	12	0	4	4	1	2	0	1	0	0	0	90
Aug-05	26	32	15	0	2	6	0	1	0	2	3	0	0	87
Jul-05	21	53	14	0	3	1	0	0	0	4	1	0	0	97
Jun-05	31	32	11	0	3	5	0	3	0	2	0	0	0	87
May-05	21	43	12	0	3	7	0	0	0	1	1	0	1	89
Apr-05	18	43	16	0	3	8	0	0	0	2	4	0	0	94
Mar-05	26	36	18	0	3	2	0	2	0	1	1	0	0	89

Definitions of Release Types

Discretionary parole-Released to parole through Parole Board discretion prior to mandatory release or sentence discharge date.

Mandatory parole-Released to parole on mandatory release date.

Mand. Repar-Reparoled on specific date set by Parole Board (includes S.B. 252 reparoles). n/a - breakout not available prior to June 2004.

Com. Supv.-Released to serve 12 months of community supervision.

Sentence discharge-Completion of sentence with no further supervision.

H.B. 1087 discharge-Completion of sentence with no further supervision, subject to earn time provisions of H.B. 95-1087.

Martin/ Cooper discharge-Completion of sentence with no further supervision, sex offender subject to Martin/Cooper Supreme Court decision.

Chgs/ Det. discharge-Completion of sentence, released to other law enforcement for pending charges or detainees.

Com. Spv. Elim discharge-Completion of sentence following reincarceration on community supervision sentence.

Probation-Released by court to probation.

Ct. Ord. Dsch.-Released by court order.

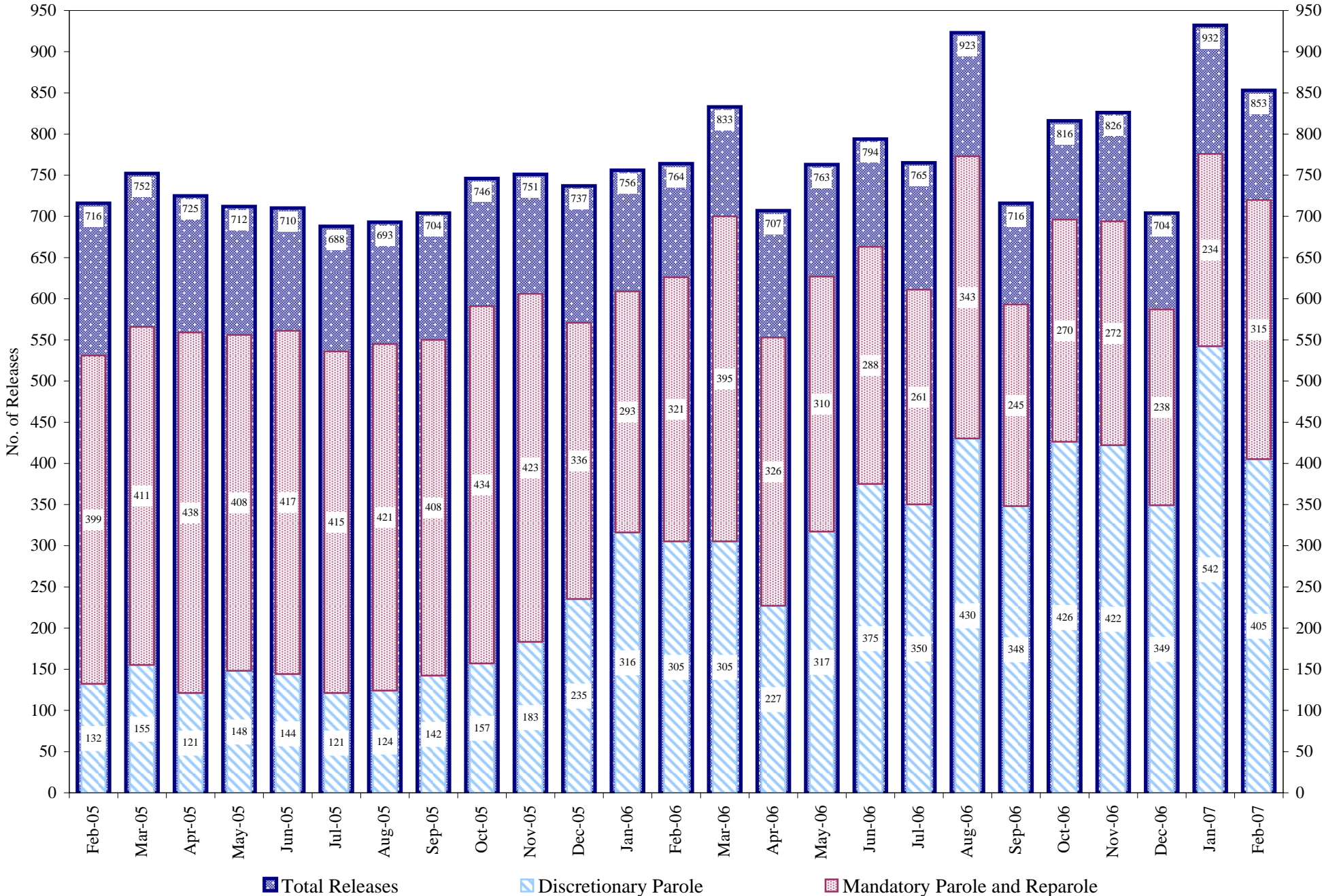
Appeal Bond-Released by court to appeal bond.

Deceased-Offender death in prison.

*Due to the decrease in community transportation services, the Department implemented a procedural change in December 2005 with regards to releasing inmates on weekends. As a result of this change, discretionary releases have increased and mandatory releases have decreased.

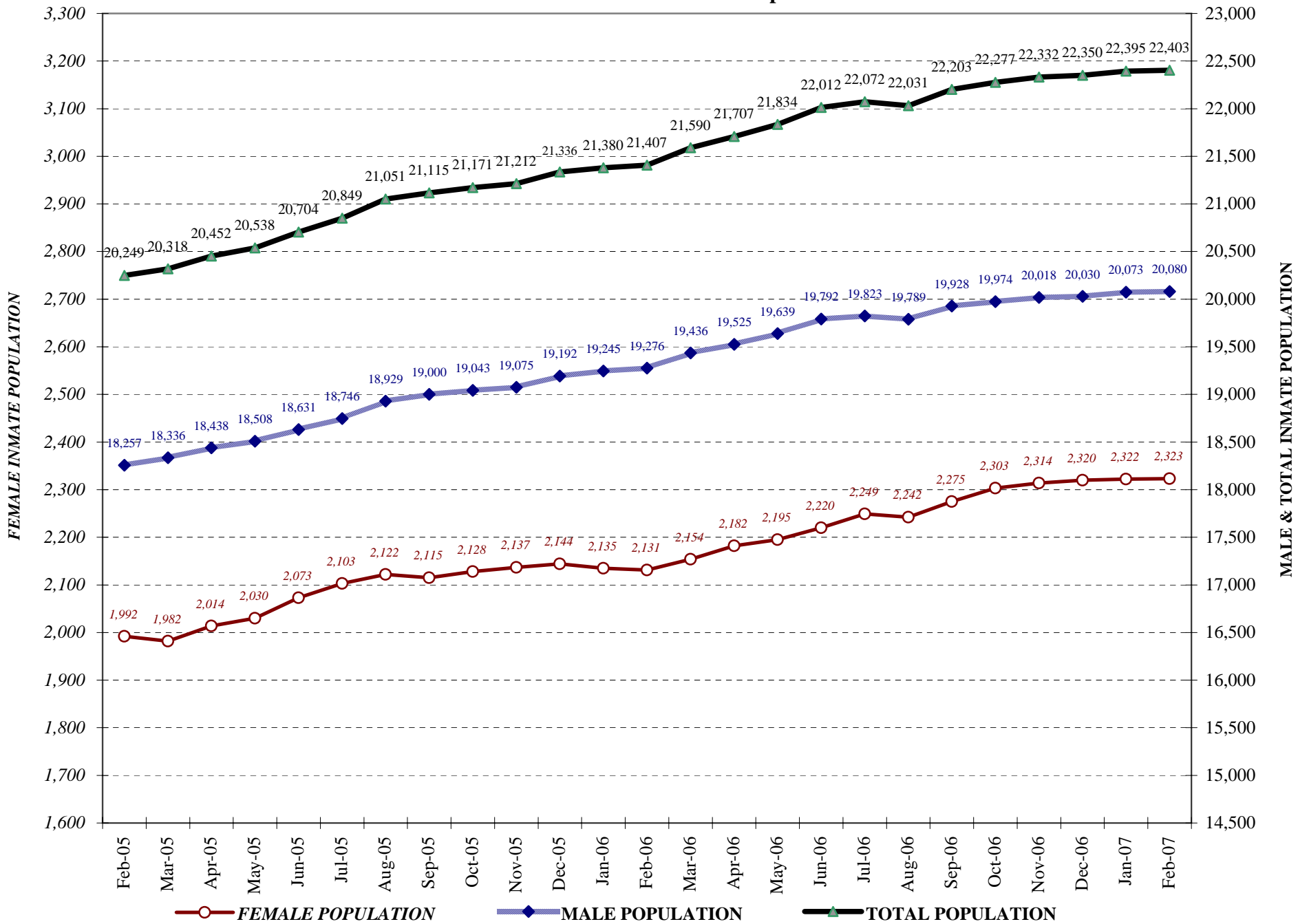
COLORADO DEPARTMENT OF CORRECTIONS

Adult Prison Releases

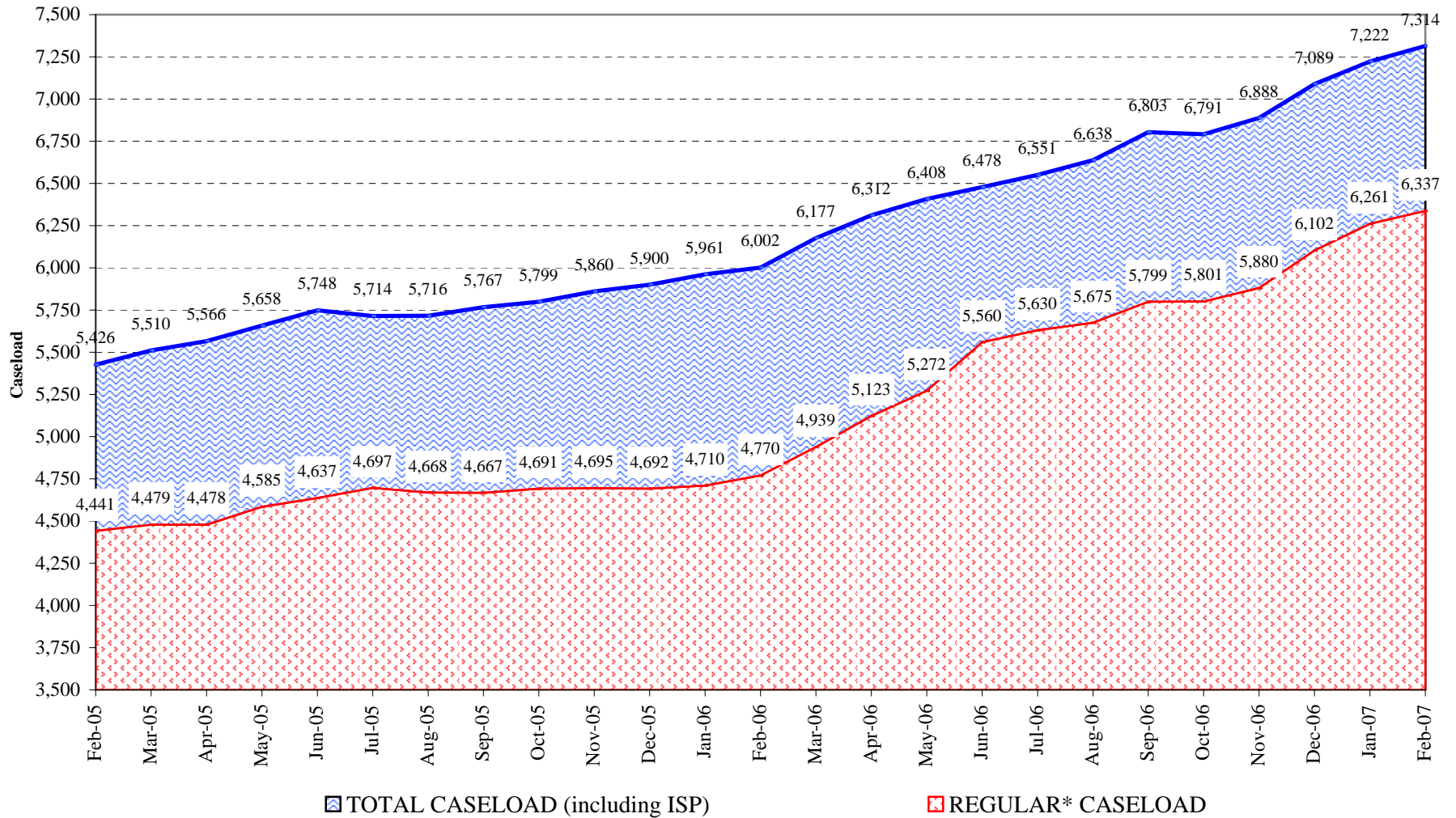


Total releases include releases to discretionary parole, mandatory parole and reparole, all types of discharges and other releases as detailed on the previous page.

COLORADO DEPARTMENT OF CORRECTIONS Adult Jurisdiction Inmate Population



COLORADO DEPARTMENT OF CORRECTIONS Parole Population



* Regular caseload includes interstate parole, but excludes out-of-state parolees and absconders.