

**COLORADO DEPARTMENT OF CORRECTIONS
MONTHLY POPULATION AND CAPACITY REPORT
AS OF JANUARY 31, 2007**

7-Feb-07

	12/31/06	CAPACITY CHANGES	------ 01/31/07 -----		------ 01/31/06 -----	
	OPERATIONAL CAPACITY*		OPERATIONAL CAPACITY*	ON-GRDS POPULATION	OPERATIONAL CAPACITY*	ON-GRDS POPULATION
COLO STATE PENITENTIARY	756		756	752	756	751
CENTENNIAL CORR FAC	336		336	324	336	328
STERLING CORR FAC	2,445		2,445	2,383	2,445	2,392
LIMON CORR FAC	953		953	931	953	947
ARK VALLEY CORR FAC	1,007		1,007	1,001	1,007	1,004
BUENA VISTA CORR FAC	826		826	815	826	823
BUENA VISTA MIN CTR	292		292	286	292	288
COLO TERR CORR FAC	786		786	794	786	809
FORT LYON CORR FAC	500		500	466	500	495
FREMONT CORR FAC	1,471		1,471	1,435	1,471	1,452
LA VISTA CORR FAC	447	25	472	471	0	0
ARROWHEAD CORR CTR	494		494	488	494	490
FOUR MILE CORR CTR	499		499	496	499	495
PUEBLO MINIMUM CTR	0		0	0	256	247
TRINIDAD CORR FAC	484		484	480	484	475
S.T.U. at Y.O.S.	30		30	30	30	30
SKYLINE CORR CTR	249		249	243	249	239
COLORADO CORR CTR	150		150	144	150	134
DELTA CORR CTR	484		484	468	484	479
RIFLE CORR CTR	192		192	187	192	191
COLO CORR ALT PROGRAM	100		100	101	100	97
COLO WOMEN'S CORR FAC	224		224	208	224	224
DENVER WOMEN'S CORR FAC	900		900	778	900	883
DENVER REC DIAG CTR	480		480	455	480	482
SAN CARLOS CORR FAC	255		255	250	255	246
SUBTOTAL	14,360	25	14,385	13,986	14,169	14,001
CONTRACTS:						
BENT COUNTY CORR CTR	724		724	691	724	692
HUERFANO COUNTY CORR CTR	774		774	718	778	726
CROWLEY COUNTY CORR FAC	1,754	-34	1,720	1,537	1,820	1,199
KIT CARSON COUNTY CORR FAC	824	-4	820	713	820	743
CHEYENNE MTN REENTRY CTR	500		500	479	500	391
BRUSH CORR FAC	270		270	257	270	259
NORTH FORK OK CORR FAC	240	240	480	480	0	0
OFF-GROUNDS POPULATION:				218		199
ESCAPEES/WALKAWAYS				245		267
REVOCATIONS-JAIL				0		0
JAIL BACKLOG:						
BACKLOG LESS THAN 72 HOURS			184		158	
BACKLOG GREATER THAN 72 HOURS (FISCAL YTD AVE = 386)			214		218	
BACKLOG-PAROLEES AWAITING TRANSFER			76		81	
TOTAL JAIL BACKLOG				474		457
COUNTY JAIL CONTRACTS				63		39
COMMUNITY CORRECTIONS						
COMMUNITY						
RESIDENTIAL	1,273	16	1,289	1,289	1,236	1,236
PAROLE REVOCATIONS	1	0	1	1	0	0
REVOKED-RET TO CUST	222	10	232	232	187	187
NON-RESIDENTIAL	86	-15	71	71	59	59
REGRESSIONS	61	-30	31	31	35	35
TOTAL COMMUNITY	1,643	-19	1,624	1,624	1,517	1,517
ISP						
RESIDENTIAL	878	-14	864	864	836	836
NON-RESIDENTIAL	40	-2	38	38	40	40
REGRESSIONS	10	-2	8	8	14	14
TOTAL ISP	928	-18	910	910	890	890
TOTAL COMM. CORRECTIONS	2,571	-37	2,534	2,534	2,407	2,407
MALE POPULATION			20,073		19,245	
FEMALE POPULATION			2,322		2,135	
TOTAL INMATE JURISDICTIONAL POPULATION				22,395		21,380

*OPERATIONAL CAPACITY INCLUDES ALL BEDS AVAILABLE FOR USE, INCLUDING MANAGEMENT CONTROL UNITS, BUT EXCLUDES EMERGENCY DOUBLE BUNKING

COLORADO DEPARTMENT OF CORRECTIONS
MONTHLY POPULATION AND CAPACITY REPORT
AS OF JANUARY 31, 2007

7-Feb-07

CURRENT MONTH CHANGES IN CAPACITY:

Jan-07	LA VISTA CORR FAC	INCREASE CAPACITY	25
Jan-07	CROWLEY COUNTY CORR FAC	ADJUST CONTRACT BEDS	-34
Jan-07	KIT CARSON COUNTY CORR FAC	ADJUST CONTRACT BEDS	-4
Jan-07	NORTH FORK OK CORR FAC	INCREASE CONTRACT BEDS	240

NET MONTHLY GROWTH RATE:

CURRENT MONTH	45
FISCAL YEAR-TO-DATE AVERAGE	55

YOUTHFUL OFFENDER SYSTEM

	----- 01/31/07 -----			01/31/06
	PUEBLO	CONTRACT FACILITIES	COMM. CORR.	TOTAL POPULATION
INTAKE/IDO	5			6
RFP/REMEDICATION	7			10
PHASE I	156	0		142
PHASE II	7			13
PHASE III	0		34	39
OFF GROUNDS/BACKLOG				9
TOTAL Y.O.S. POPULATION	175	0	34	219

	CURRENT MONTH	FISCAL YR. TO DATE
YOS ADMISSIONS	7	39
YOS RELEASES:		
COMPLETION OF SENTENCE	5	33
JUDICIAL RELEASE TO PROB/CT ORD DISCHG	0	2
JUDICIAL TRANSFER TO DOC	0	0
TERMINATION/FAILURE	1	7
DECEASED	0	1
TOTAL RELEASES	6	43

PAROLE CASELOAD

	----- 01/31/07 -----			----- 12/31/06 -----		----- 01/31/06 -----	
	DOMESTIC	INTERST PAR/PROB	TOTAL CASELOAD	DOMESTIC	TOTAL CASELOAD	DOMESTIC	TOTAL CASELOAD
DENVER REGION							
REGULAR	2,271	99	2,370	2,197	2,183	1,739	1,843
ISP	430		430	441	441	622	622
SUBTOTAL	2,701	99	2,800	2,638	2,746	2,361	2,465
NORTHEAST REGION							
REGULAR	1,684	51	1,735	1,646	1,485	1,203	1,238
ISP	215		215	216	216	299	299
SUBTOTAL	1,899	51	1,950	1,862	1,911	1,502	1,537
SOUTHEAST REGION							
REGULAR	1,421	84	1,505	1,390	1,332	1,098	1,161
ISP	224		224	233	233	214	214
SUBTOTAL	1,645	84	1,729	1,623	1,709	1,312	1,375
WESTERN REGION							
REGULAR	612	39	651	587	630	489	528
ISP	92		92	97	97	97	97
SUBTOTAL	704	39	743	684	723	586	625
TOTAL CASELOAD							
REGULAR	5,988	273	6,261	5,820	6,102	4,529	4,770
ISP	961		961	987	987	1,232	1,232
TOTAL	6,949	273	7,222	6,807	7,089	5,761	6,002
ADDITIONAL CASELOAD:							
OUT-OF-STATE PAROLEES			1,756		1,742		1,606
PAROLEE ABSCONDERS			750		720		642

COLORADO DEPARTMENT OF CORRECTIONS
MONTHLY POPULATION AND CAPACITY REPORT
AS OF JANUARY 31, 2007

	01/31/2007 Population			----- FINAL CUSTODY DESIGNATION* -----					
	On-Grds.	Off-Grds	Total	Uncls.	Ad.Seg	Close	Medium	Min.-Res.	Minimum
Male Population									
COLO STATE PENITENTIARY	752	1	753		753				
CENTENNIAL CORR FAC	324	4	328		138	166	7	7	10
STERLING CORR FAC	2,383	16	2,399		241	721	524	537	376
LIMON CORR FAC	931	8	939		12	707	156	47	17
ARK VALLEY CORR FAC	1,001	11	1,012		5	478	335	138	56
BUENA VISTA CORR FAC	815	13	828		14	403	253	101	57
BUENA VISTA MIN CTR	286	9	295				1	211	83
COLO TERR CORR FAC	792	6	798		10	200	257	198	133
FORT LYON CORR FAC	466	15	481		2	35	245	115	84
FREMONT CORR FAC	1,435	7	1,442		5	149	397	565	326
ARROWHEAD CORR CTR	488	4	492				3	287	202
FOUR MILE CORR CTR	496	3	499				3	337	159
TRINIDAD CORR FAC	480	6	486				1	421	64
S.T.U. at Y.O.S.	30	0	30				8	19	3
SKYLINE CORR CTR	243	0	243					1	242
COLORADO CORR CTR	144	1	145					3	142
DELTA CORR CTR	468	6	474				1	2	471
RIFLE CORR CTR	187	3	190					6	184
COLO CORR ALT PROGRAM	95	5	100				7	29	64
DENVER REC DIAG CTR	453	7	460	124	12	47	101	134	42
SAN CARLOS CORR FAC	250	4	254		24	103	57	36	34
CONTRACTS:									
BENT COUNTY CORR CTR	691	9	700			13	332	205	150
HUERFANO COUNTY CORR CTR	718	6	724			13	384	198	129
CROWLEY COUNTY CORR FAC	1,537	33	1,570			1	853	487	229
KIT CARSON COUNTY CORR FAC	713	9	722			11	361	236	114
CHEYENNE MTN REENTRY CTR	479	2	481			2	123	237	119
NORTH FORK OK CORR FAC	480	0	480				285	151	44
COMMUNITY/ISP	1,713	94	1,807			9	44	57	1,697
Total Classified Male Population	18,850	282	19,132	124	1,216	3,058	4,738	4,765	5,231
Percent of Total				0.6%	6.4%	16.0%	24.8%	24.9%	27.3%
Unclassified Facilities:									
JAIL BACKLOG	427	7	434						
COUNTY JAIL CONTRACTS	62	1	63						
REVOKED TO COMM CTR	0	1	1						
REVOKED-RET TO CUST FAC	166	34	200						
COMM/ISP REGRESSIONS	0	35	35						
ESCAPEES/WALKAWAYS	42	166	208						
Total Unclassified Facilities	697	244	941						
Total Male Population	19,547	526	20,073						
Female Population									
COLO WOMEN'S CORR FAC	208	3	211			55	52	47	57
DENVER WOMEN'S CORR FAC	778	10	788	13	26	140	142	264	203
LA VISTA CORR FAC	471	9	480			23	132	198	127
COLO CORR ALT PROGRAM	6	1	7				1	1	5
DENVER REC DIAG CTR INF	2	0	2			1	1		
COLO TERR CORR FAC INF.	2	0	2				1	1	
CONTRACTS:									
BRUSH CORR FAC	257	7	264			5	62	128	69
COMMUNITY/ISP	440	15	455			7	12	21	415
Total Classified Female Population	2,164	45	2,209	13	26	231	403	660	876
Percent of Total				0.6%	1.2%	10.5%	18.2%	29.9%	39.7%
Unclassified Facilities:									
JAIL BACKLOG	40	0	40						
COUNTY JAIL CONTRACTS	0	0	0						
REVOKED TO COMM CTR	0	0	0						
REVOKED-RET TO CUST FAC	28	4	32						
COMM/ISP REGRESSIONS	0	4	4						
ESCAPEES/WALKAWAYS	1	36	37						
Total Unclassified Facilities	69	44	113						
Total Female Population	2,233	89	2,322						

COLORADO DEPARTMENT OF CORRECTIONS
ADULT INMATE JURISDICTIONAL POPULATION (1)

DATE: 2/7/2007

DATE	MALE POPULATION			FEMALE POPULATION			TOTAL POPULATION		
	Male Population	Net Change	Fiscal Y-T-D Average	Female Population	Net Change	Fiscal Y-T-D Average	Total Population	Net Change	Fiscal Y-T-D Average
01-31-07	20,073	43	40	2,322	2	15	22,395	45	55
12-31-06	20,030	12		2,320	6		22,350	18	
11-30-06	20,018	44		2,314	11		22,332	55	
10-31-06	19,974	46		2,303	28		22,277	74	
09-30-06	19,928	139		2,275	33		22,203	172	
08-31-06	19,789	-34		2,242	-7		22,031	-41	
07-31-06	19,823	31		2,249	29		22,072	60	
06-30-06	19,792	153		2,220	25		22,012	178	
05-31-06	19,639	114		2,195	13		21,834	127	
04-30-06	19,525	89		2,182	28		21,707	117	
03-31-06	19,436	160		2,154	23		21,590	183	
02-28-06	19,276	31		2,131	-4		21,407	27	
01-31-06	19,245	53		2,135	-9		21,380	44	
12-31-05	19,192	117	97	2,144	7	12	21,336	124	109
11-30-05	19,075	32		2,137	9		21,212	41	
10-31-05	19,043	43		2,128	13		21,171	56	
09-30-05	19,000	71		2,115	-7		21,115	64	
08-31-05	18,929	183		2,122	19		21,051	202	
07-31-05	18,746	115		2,103	30		20,849	145	
06-30-05	18,631	123		2,073	43		20,704	166	
05-31-05	18,508	70		2,030	16		20,538	86	
04-30-05	18,438	102		2,014	32		20,452	134	
03-31-05	18,336	79		1,982	-10		20,318	69	
02-28-05	18,257	30		1,992	26		20,249	56	
01-31-05	18,227	-2		1,966	51		20,193	49	
12-31-04	18,229	56	68	1,915	11	27	20,144	67	95
11-30-04	18,173	79		1,904	27		20,077	106	
10-31-04	18,094	99		1,877	24		19,971	123	
09-30-04	17,995	-18		1,853	44		19,848	26	
08-31-04	18,013	95		1,809	44		19,822	139	
07-31-04	17,918	104		1,765	10		19,683	114	
06-30-04	17,814		49	1,755		11	19,569		60
06-30-03	17,226		57	1,620		10	18,846		67
06-30-02	16,539		87	1,506		14	18,045		101
06-30-01	15,493		63	1,340		6	16,833		70
06-30-00	14,733		99	1,266		7	15,999		106
06-30-99	13,547		75	1,179		14	14,726		89
06-30-98	12,647		81	1,016		9	13,663		89
06-30-97	11,681			909			12,590		

(1) Adult inmate jurisdictional population includes on-grounds, off-grounds, out-of-state, escapees, and jail backlog and excludes offenders sentenced to the Youthful Offender System (Y.O.S.).

COLORADO DEPARTMENT OF CORRECTIONS
ADULT INMATE RELEASES FROM PRISON
TOTAL Population (Male and Female)

(Revised) Date: 4/11/2007

	Parole				Discharge					Other				Total
	Discretionary*	Mandatory*	Mand. Repar.*	Com. Supv.	Sentence	H.B. 1087	Martin/Cooper	Chgs/Det.	Com Spv. Elim	Probation	Ct. Ord. Dsch.	Appeal Bond	Deceased	
Jan-07	542	192	42	0	37	59	5	15	0	15	16	0	9	932
Dec-06	349	179	59	0	27	44	10	14	0	13	6	1	2	704
Nov-06	422	202	70	0	30	45	12	12	0	16	11	0	6	826
Oct-06	426	186	84	0	36	44	11	10	0	6	7	1	5	816
Sep-06	348	180	65	0	29	44	13	15	0	13	7	0	2	716
Aug-06	430	239	104	0	37	52	10	21	0	17	11	0	2	923
Jul-06	350	174	87	0	43	52	9	20	0	17	6	0	7	765
Jun-06	375	199	89	0	37	43	10	16	0	16	7	0	2	794
May-06	317	235	75	0	34	52	10	15	0	13	9	0	3	763
Apr-06	227	235	91	0	41	54	17	17	0	10	7	0	8	707
Mar-06	305	282	113	0	39	46	10	12	0	18	5	1	2	833
Feb-06	305	250	71	0	34	39	13	10	0	27	14	0	1	764
Jan-06	316	218	75	0	45	51	11	14	0	13	6	0	7	756
Dec-05	235	238	98	0	51	47	15	17	0	18	12	0	6	737
Nov-05	183	297	126	0	37	55	7	13	0	10	18	0	5	751
Oct-05	157	304	130	0	34	58	11	19	0	17	10	1	5	746
Sep-05	142	318	90	0	30	61	17	14	0	23	6	0	3	704
Aug-05	124	312	109	0	33	47	17	20	0	14	11	0	6	693
Jul-05	121	306	109	0	46	48	13	13	0	15	9	0	8	688
Jun-05	144	312	105	0	28	57	13	16	0	22	13	0	0	710
May-05	148	313	95	0	42	61	8	14	0	16	7	1	7	712
Apr-05	121	313	125	0	40	57	9	20	0	18	12	0	10	725
Mar-05	155	311	100	0	46	64	15	21	0	24	11	1	4	752
Feb-05	132	290	109	0	58	63	16	14	0	17	12	0	5	716

Definitions of Release Types

Discretionary parole-Released to parole through Parole Board discretion prior to mandatory release or sentence discharge date.

Mandatory parole-Released to parole on mandatory release date.

Mand. Repar-Reparoled on specific date set by Parole Board (includes S.B. 252 reparoles). n/a - breakout not available prior to June 2004.

Com. Supv.-Released to serve 12 months of community supervision.

Sentence discharge-Completion of sentence with no further supervision.

H.B. 1087 discharge-Completion of sentence with no further supervision, subject to earn time provisions of H.B. 95-1087.

Martin/ Cooper discharge-Completion of sentence with no further supervision, sex offender subject to Martin/Cooper Supreme Court decision.

Chgs/ Det. discharge-Completion of sentence, released to other law enforcement for pending charges or detainees.

Com. Spv. Elim discharge-Completion of sentence following reincarceration on community supervision sentence.

Probation-Released by court to probation.

Ct. Ord. Dsch.-Released by court order.

Appeal Bond-Released by court to appeal bond.

Deceased-Offender death in prison.

***Due to the decrease in community transportation services, the Department implemented a procedural change in December 2005 with regards to releasing inmates on weekends. As a result of this change, discretionary releases have increased and mandatory releases have decreased.**

COLORADO DEPARTMENT OF CORRECTIONS

ADULT INMATE RELEASES FROM PRISON

Male Population Only

(Revised) Date: 4/11/2007

	Parole				Discharge					Other				Total
	Discretionary*	Mandatory*	Mand. Repar.*	Com. Supv.	Sentence	H.B. 1087	Martin/Cooper	Chgs/Det.	Com Spv. Elim	Probation	Ct. Ord. Dsch.	Appeal Bond	Deceased	
Jan-07	453	169	37	0	34	53	5	15	0	14	13	0	7	800
Dec-06	298	160	56	0	24	38	10	14	0	13	6	1	2	622
Nov-06	358	178	62	0	28	42	12	12	0	13	10	0	6	721
Oct-06	373	163	73	0	34	36	11	9	0	6	6	1	5	717
Sep-06	300	148	59	0	29	40	13	12	0	12	7	0	2	622
Aug-06	364	209	89	0	34	44	10	21	0	14	10	0	2	797
Jul-06	310	158	72	0	40	45	9	18	0	15	4	0	7	678
Jun-06	325	180	74	0	32	41	10	13	0	15	6	0	2	698
May-06	269	202	60	0	33	47	10	15	0	12	8	0	3	659
Apr-06	178	213	79	0	35	47	17	16	0	9	6	0	8	608
Mar-06	267	246	100	0	36	41	10	12	0	14	5	1	2	734
Feb-06	253	220	63	0	33	37	13	10	0	25	14	0	1	669
Jan-06	266	187	63	0	43	48	11	13	0	12	5	0	6	654
Dec-05	193	204	84	0	48	43	15	17	0	16	11	0	4	635
Nov-05	156	251	114	0	32	47	7	12	0	10	17	0	4	650
Oct-05	127	273	101	0	32	50	11	17	0	15	10	1	4	641
Sep-05	111	283	78	0	26	57	16	12	0	22	6	0	3	614
Aug-05	98	280	94	0	31	41	17	19	0	12	8	0	6	606
Jul-05	100	253	95	0	43	47	13	13	0	11	8	0	8	591
Jun-05	113	280	94	0	25	52	13	13	0	20	13	0	0	623
May-05	127	270	83	0	39	54	8	14	0	15	6	1	6	623
Apr-05	103	270	109	0	37	49	9	20	0	16	8	0	10	631
Mar-05	129	275	82	0	43	62	15	19	0	23	10	1	4	663
Feb-05	109	259	100	0	53	57	16	13	0	15	11	0	5	638

Definitions of Release Types

Discretionary parole-Released to parole through Parole Board discretion prior to mandatory release or sentence discharge date.

Mandatory parole-Released to parole on mandatory release date.

Mand. Repar-Reparoled on specific date set by Parole Board (includes S.B. 252 reparoles). n/a - breakout not available prior to June 2004.

Com. Supv.-Released to serve 12 months of community supervision.

Sentence discharge-Completion of sentence with no further supervision.

H.B. 1087 discharge-Completion of sentence with no further supervision, subject to earn time provisions of H.B. 95-1087.

Martin/ Cooper discharge-Completion of sentence with no further supervision, sex offender subject to Martin/Cooper Supreme Court decision.

Chgs/ Det. discharge-Completion of sentence, released to other law enforcement for pending charges or detainees.

Com. Spv. Elim discharge-Completion of sentence following reincarceration on community supervision sentence.

Probation-Released by court to probation.

Ct. Ord. Dsch.-Released by court order.

Appeal Bond-Released by court to appeal bond.

Deceased-Offender death in prison.

***Due to the decrease in community transportation services, the Department implemented a procedural change in December 2005 with regards to releasing inmates on weekends. As a result of this change, discretionary releases have increased and mandatory releases have decreased.**

COLORADO DEPARTMENT OF CORRECTIONS
ADULT INMATE RELEASES FROM PRISON
Female Population Only

Date: 2/7/2007

	Parole				Discharge					Other				Total
	Discretionary*	Mandatory*	Mand. Repar.*	Com. Supv.	Sentence	H.B. 1087	Martin/Cooper	Chgs/Det.	Com Spv. Elim	Probation	Ct. Ord. Dsch.	Appeal Bond	Deceased	
Jan-07	89	23	5	0	3	6	0	0	0	1	3	0	2	132
Dec-06	51	19	3	0	3	6	0	0	0	0	0	0	0	82
Nov-06	64	24	8	0	2	3	0	0	0	3	1	0	0	105
Oct-06	53	23	11	0	2	8	0	1	0	0	1	0	0	99
Sep-06	48	32	6	0	0	4	0	3	0	1	0	0	0	94
Aug-06	66	30	15	0	3	8	0	0	0	3	1	0	0	126
Jul-06	40	16	15	0	3	7	0	2	0	2	2	0	0	87
Jun-06	50	19	15	0	5	2	0	3	0	1	1	0	0	96
May-06	48	33	15	0	1	5	0	0	0	1	1	0	0	104
Apr-06	49	22	12	0	6	7	0	1	0	1	1	0	0	99
Mar-06	38	36	13	0	3	5	0	0	0	4	0	0	0	99
Feb-06	52	30	8	0	1	2	0	0	0	2	0	0	0	95
Jan-06	50	31	12	0	2	3	0	1	0	1	1	0	1	102
Dec-05	42	34	14	0	3	4	0	0	0	2	1	0	2	102
Nov-05	27	46	12	0	5	8	0	1	0	0	1	0	1	101
Oct-05	30	31	29	0	2	8	0	2	0	2	0	0	1	105
Sep-05	31	35	12	0	4	4	1	2	0	1	0	0	0	90
Aug-05	26	32	15	0	2	6	0	1	0	2	3	0	0	87
Jul-05	21	53	14	0	3	1	0	0	0	4	1	0	0	97
Jun-05	31	32	11	0	3	5	0	3	0	2	0	0	0	87
May-05	21	43	12	0	3	7	0	0	0	1	1	0	1	89
Apr-05	18	43	16	0	3	8	0	0	0	2	4	0	0	94
Mar-05	26	36	18	0	3	2	0	2	0	1	1	0	0	89
Feb-05	23	31	9	0	5	6	0	1	0	2	1	0	0	78

Definitions of Release Types

Discretionary parole-Released to parole through Parole Board discretion prior to mandatory release or sentence discharge date.

Mandatory parole-Released to parole on mandatory release date.

Mand. Repar-Reparoled on specific date set by Parole Board (includes S.B. 252 reparoles). n/a - breakout not available prior to June 2004.

Com. Supv.-Released to serve 12 months of community supervision.

Sentence discharge-Completion of sentence with no further supervision.

H.B. 1087 discharge-Completion of sentence with no further supervision, subject to earn time provisions of H.B. 95-1087.

Martin/ Cooper discharge-Completion of sentence with no further supervision, sex offender subject to Martin/Cooper Supreme Court decision.

Chgs/ Det. discharge-Completion of sentence, released to other law enforcement for pending charges or detainees.

Com. Spv. Elim discharge-Completion of sentence following reincarceration on community supervision sentence.

Probation-Released by court to probation.

Ct. Ord. Dsch.-Released by court order.

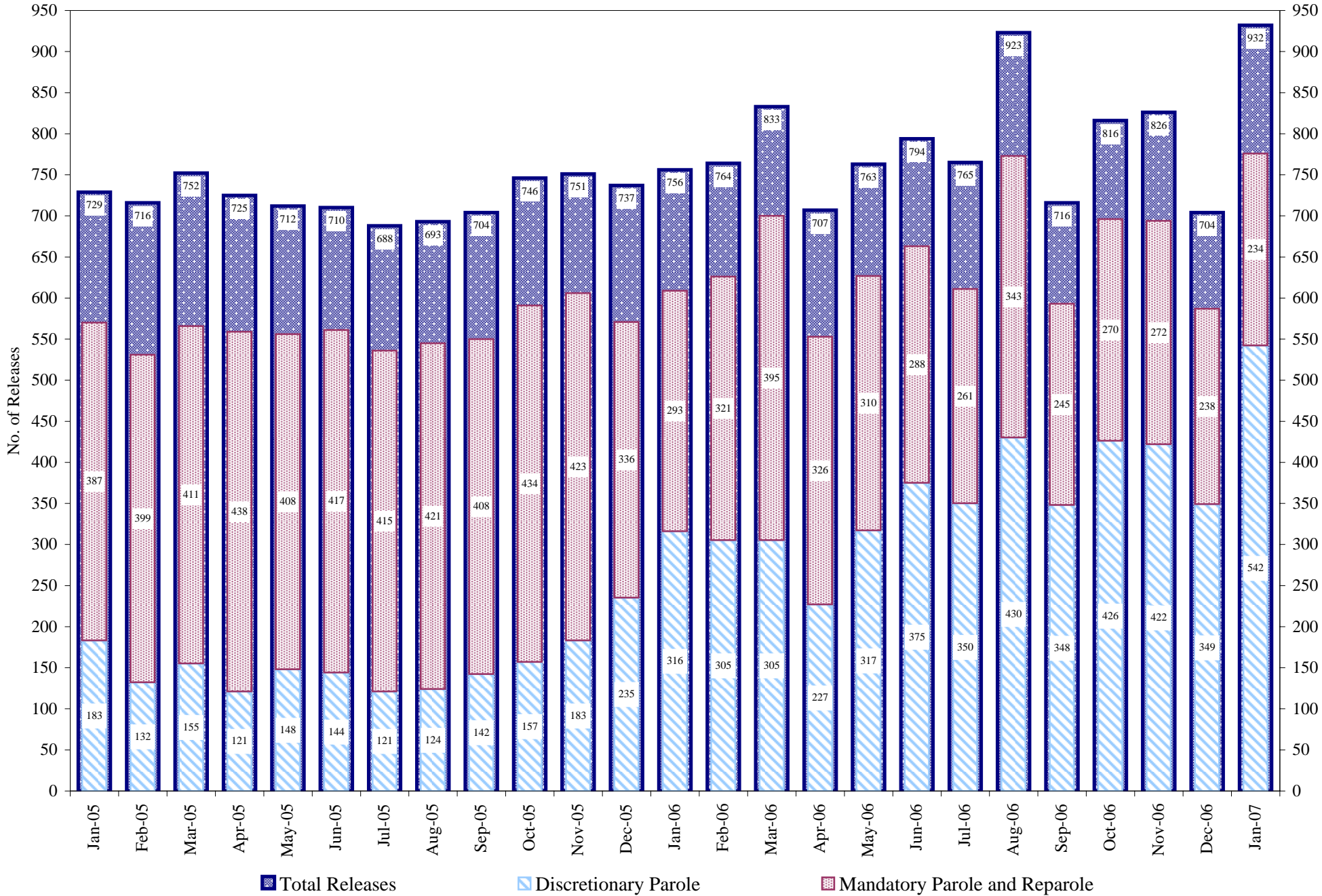
Appeal Bond-Released by court to appeal bond.

Deceased-Offender death in prison.

*Due to the decrease in community transportation services, the Department implemented a procedural change in December 2005 with regards to releasing inmates on weekends. As a result of this change, discretionary releases have increased and mandatory releases have decreased.

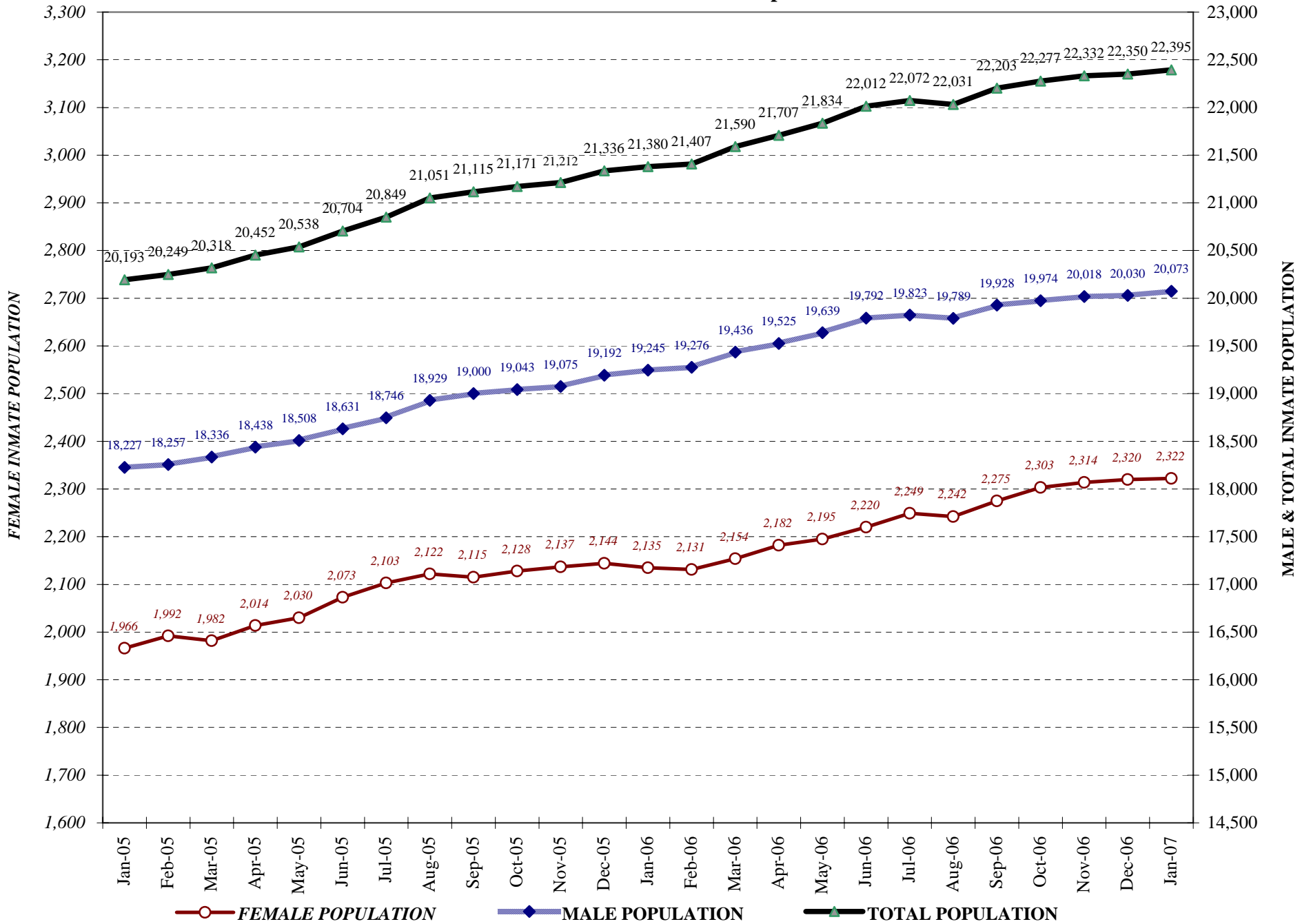
COLORADO DEPARTMENT OF CORRECTIONS

Adult Prison Releases

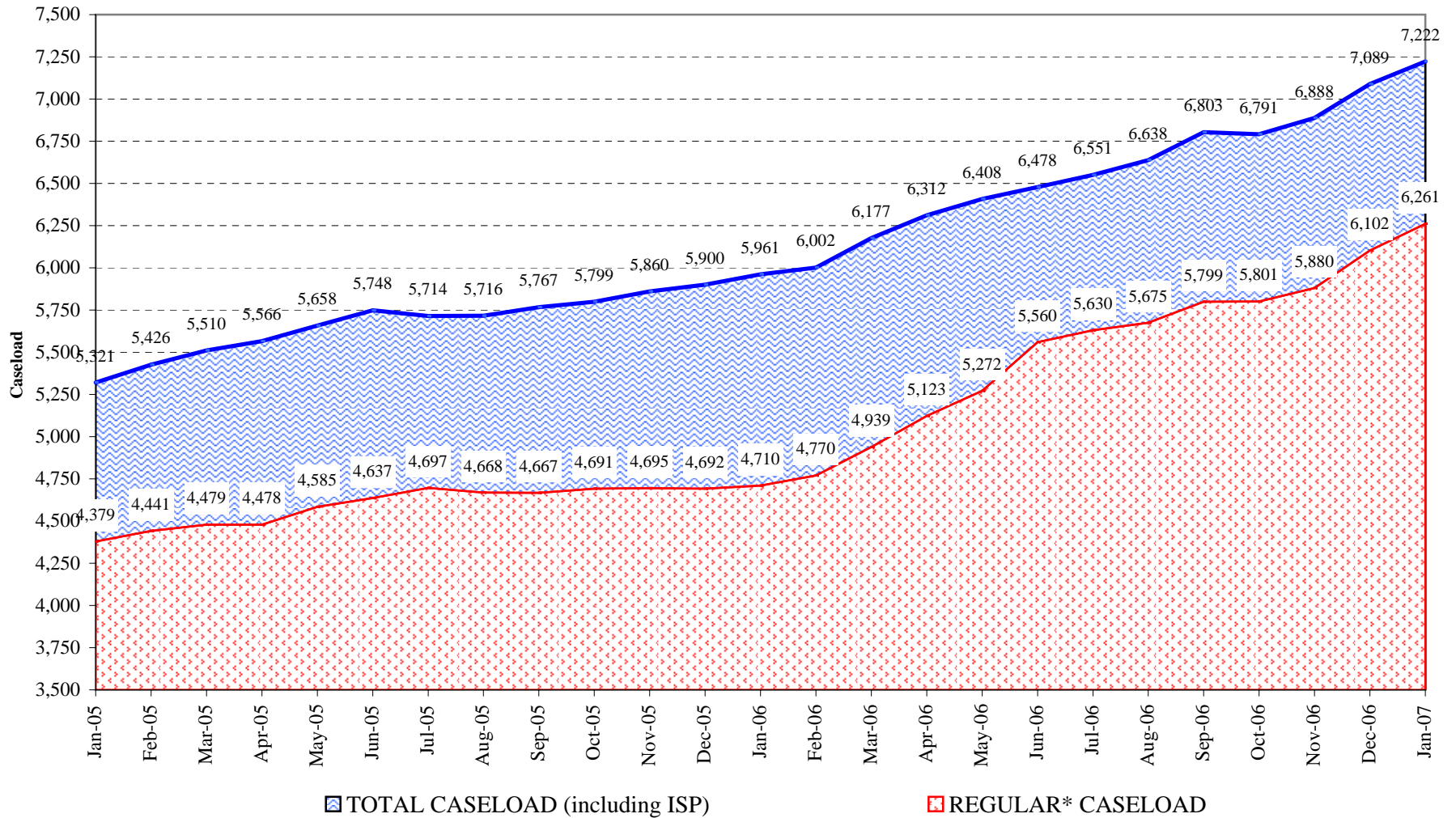


Total releases include releases to discretionary parole, mandatory parole and reparole, all types of discharges and other releases as detailed on the previous page.

COLORADO DEPARTMENT OF CORRECTIONS Adult Jurisdiction Inmate Population



COLORADO DEPARTMENT OF CORRECTIONS Parole Population



* Regular caseload includes interstate parole, but excludes out-of-state parolees and absconders.