

**COLORADO DEPARTMENT OF CORRECTIONS
MONTHLY POPULATION AND CAPACITY REPORT
AS OF DECEMBER 31, 2006**

5-Jan-07

	11/30/06	CAPACITY CHANGES	------ 12/31/06 -----		------ 12/31/05 -----	
	OPERATIONAL CAPACITY*		OPERATIONAL CAPACITY*	ON-GRDS POPULATION	OPERATIONAL CAPACITY*	ON-GRDS POPULATION
COLO STATE PENITENTIARY	756		756	749	756	752
CENTENNIAL CORR FAC	336		336	326	320	328
STERLING CORR FAC	2,445		2,445	2,397	2,445	2,403
LIMON CORR FAC	953		953	946	953	939
ARK VALLEY CORR FAC	1,007		1,007	991	1,007	1,002
BUENA VISTA CORR FAC	826		826	806	826	825
BUENA VISTA MIN CTR	292		292	288	292	286
COLO TERR CORR FAC	786		786	777	786	781
FORT LYON CORR FAC	500		500	476	500	492
FREMONT CORR FAC	1,471		1,471	1,448	1,471	1,469
LA VISTA CORR FAC	375	72	447	404	0	0
ARROWHEAD CORR CTR	494		494	492	494	488
FOUR MILE CORR CTR	499		499	497	499	488
PUEBLO MINIMUM CTR	0		0	0	256	252
TRINIDAD CORR FAC	484		484	475	484	474
S.T.U. at Y.O.S.	30		30	30	30	18
SKYLINE CORR CTR	249		249	244	249	248
COLORADO CORR CTR	150		150	148	150	147
DELTA CORR CTR	484		484	471	484	480
RIFLE CORR CTR	192		192	184	192	182
COLO CORR ALT PROGRAM	100		100	107	100	107
COLO WOMEN'S CORR FAC	224		224	218	224	222
DENVER WOMEN'S CORR FAC	900		900	857	900	875
DENVER REC DIAG CTR	480		480	491	480	477
SAN CARLOS CORR FAC	255		255	244	255	242
SUBTOTAL	14,288	72	14,360	14,066	14,153	13,977
CONTRACTS:						
BENT COUNTY CORR CTR	724		724	711	724	719
HUERFANO COUNTY CORR CTR	774		774	755	778	764
CROWLEY COUNTY CORR FAC	1,754		1,754	1,615	1,820	1,142
KIT CARSON COUNTY CORR FAC	824		824	798	820	781
CHEYENNE MTN REENTRY CTR	500		500	485	500	0
BRUSH CORR FAC	270		270	251	270	367
NORTH FORK OK CORR FAC	0	240	240	240	270	266
OFF-GROUNDS POPULATION:						
ESCAPEES/WALKAWAYS				178		159
REVOCATIONS-JAIL				245		271
				0		0
JAIL BACKLOG:						
BACKLOG LESS THAN 72 HOURS			114		73	
BACKLOG GREATER THAN 72 HOURS (FISCAL YTD AVE = 392)			203		268	
BACKLOG-PAROLEES AWAITING TRANSFER			80		72	
TOTAL JAIL BACKLOG				397		413
COUNTY JAIL CONTRACTS				38		53
COMMUNITY CORRECTIONS						
COMMUNITY						
RESIDENTIAL	1,280	-7	1,273	1,273	1,246	1,246
PAROLE REVOCATIONS	0	1	1	1	0	0
REVOKED-RET TO CUST	221	1	222	222	174	174
NON-RESIDENTIAL	71	15	86	86	59	59
REGRESSIONS	107	-46	61	61	44	44
TOTAL COMMUNITY	1,679	-36	1,643	1,643	1,523	1,523
ISP						
RESIDENTIAL	847	31	878	878	845	845
NON-RESIDENTIAL	41	-1	40	40	44	44
REGRESSIONS	17	-7	10	10	12	12
TOTAL ISP	905	23	928	928	901	901
TOTAL COMM. CORRECTIONS	2,584	-13	2,571	2,571	2,424	2,424
MALE POPULATION			20,030		19,192	
FEMALE POPULATION			2,320		2,144	
TOTAL INMATE JURISDICTIONAL POPULATION				22,350		21,336

*OPERATIONAL CAPACITY INCLUDES ALL BEDS AVAILABLE FOR USE, INCLUDING MANAGEMENT CONTROL UNITS, BU EXCLUDES EMERGENCY DOUBLE BUNKING

COLORADO DEPARTMENT OF CORRECTIONS
MONTHLY POPULATION AND CAPACITY REPORT
AS OF DECEMBER 31, 2006

5-Jan-07

CURRENT MONTH CHANGES IN CAPACITY:

Dec-06	LA VISTA CORR FAC	INCREASED CAPACITY	72
Dec-06	NORTH FORK OK CORR FAC	CONTRACT BEDS	240

NET MONTHLY GROWTH RATE:

CURRENT MONTH	18
FISCAL YEAR-TO-DATE AVERAGE	56

YOUTHFUL OFFENDER SYSTEM

	----- 12/31/06 -----				12/31/05
	PUEBLO	CONTRACT FACILITIES	COMM. CORR.	TOTAL POPULATION	TOTAL POPULATION
INTAKE/IDO	2			2	5
RFP/REMEDICATION	14			14	18
PHASE I	155	0		155	138
PHASE II	5			5	11
PHASE III	0		34	34	40
OFF GROUNDS/BACKLOG				3	6
TOTAL Y.O.S. POPULATION	176	0	34	213	218

	CURRENT MONTH	FISCAL YR. TO DATE
YOS ADMISSIONS	2	32
YOS RELEASES:		
COMPLETION OF SENTENCE	3	28
JUDICIAL RELEASE TO PROB/CT ORD DISCHG	0	2
JUDICIAL TRANSFER TO DOC	0	0
TERMINATION/FAILURE	0	6
DECEASED	0	1
TOTAL RELEASES	3	37

PAROLE CASELOAD

	----- 12/31/06 -----			----- 11/30/06 -----		----- 12/31/05 -----	
	DOMESTIC	INTERST PAR/PROB	TOTAL CASELOAD	DOMESTIC	TOTAL CASELOAD	DOMESTIC	TOTAL CASELOAD
DENVER REGION							
REGULAR	2,197	108	2,305	2,142	2,183	1,736	1,841
ISP	441		441	488	488	613	613
SUBTOTAL	2,638	108	2,746	2,630	2,739	2,349	2,454
NORTHEAST REGION							
REGULAR	1,646	49	1,695	1,624	1,485	1,192	1,229
ISP	216		216	226	226	298	298
SUBTOTAL	1,862	49	1,911	1,850	1,897	1,490	1,527
SOUTHEAST REGION							
REGULAR	1,390	86	1,476	1,351	1,332	1,047	1,110
ISP	233		233	228	228	241	241
SUBTOTAL	1,623	86	1,709	1,579	1,664	1,288	1,351
WESTERN REGION							
REGULAR	587	39	626	589	630	487	530
ISP	97		97	89	89	99	99
SUBTOTAL	684	39	723	678	721	586	629
TOTAL CASELOAD							
REGULAR	5,820	282	6,102	5,706	5,990	4,462	4,710
ISP	987		987	1,031	1,031	1,251	1,251
TOTAL	6,807	282	7,089	6,737	7,021	5,713	5,961
ADDITIONAL CASELOAD:							
OUT-OF-STATE PAROLEES			1,742		1,739		1,583
PAROLEE ABSCONDERS			720		719		652

COLORADO DEPARTMENT OF CORRECTIONS
MONTHLY POPULATION AND CAPACITY REPORT
AS OF DECEMBER 31, 2006

5-Jan-07

	12/31/2006 POPULATION			----- FINAL CUSTODY DESIGNATION* -----					
	On-Grds.	Off-Grds.	TOTAL	Uncls.	Ad.Seg	Close	Medium	Min.-Res.	Minimum
MALE POPULATION									
COLO STATE PENITENTIARY	749	4	753			750	3		
CENTENNIAL CORR FAC	326	2	328			137	179	4	3
STERLING CORR FAC	2,397	13	2,410			230	739	558	505
LIMON CORR FAC	946	8	954			9	703	179	47
ARK VALLEY CORR FAC	991	15	1,006			10	458	335	145
BUENA VISTA CORR FAC	806	12	818			16	395	262	96
BUENA VISTA MIN CTR	288	4	292				1	3	210
COLO TERR CORR FAC	775	4	779			17	196	217	199
FORT LYON CORR FAC	476	12	488			1	31	250	123
FREMONT CORR FAC	1,448	9	1,457			9	168	401	570
ARROWHEAD CORR CTR	492	3	495					1	296
FOUR MILE CORR CTR	497	1	498					3	330
TRINIDAD CORR FAC	475	4	479					0	411
S.T.U. at Y.O.S.	30	0	30					9	15
SKYLINE CORR CTR	244	1	245						2
COLORADO CORR CTR	148	1	149						5
DELTA CORR CTR	471	2	473						1
RIFLE CORR CTR	184	1	185					1	1
COLO CORR ALT PROGRAM	101	5	106					2	17
DENVER REC DIAG CTR	489	5	494	167	9	33	91	150	44
SAN CARLOS CORR FAC	244	5	249		24	97	61	30	37
CONTRACTS:									
BENT COUNTY CORR CTR	711	4	715			7	347	212	149
HUERFANO COUNTY CORR CTR	755	6	761		2	14	416	205	124
CROWLEY COUNTY CORR FAC	1,615	29	1,644			4	931	470	239
KIT CARSON COUNTY CORR FAC	798	9	807			10	398	265	134
CHEYENNE MTN REENTRY CTR	485	1	486			1	135	241	109
NORTH FORK OK CORR FAC	240	0	240				147	75	18
COMMUNITY/ISP	1,707	113	1,820			19	58	48	1,695
TOTAL MALE POPULATION	18,888	273	19,161	167	1,214	3,058	4,809	4,672	5,241
PERCENT OF TOTAL				0.9%	6.3%	16.0%	25.1%	24.4%	27.4%
FEMALE POPULATION									
COLO WOMEN'S CORR FAC	218	1	219		2	64	62	41	50
DENVER WOMEN'S CORR FAC	857	7	864	11	24	132	201	289	207
LA VISTA CORR FAC	404	2	406			9	111	166	120
COLO CORR ALT PROGRAM	6	0	6					1	5
DENVER REC DIAG CTR INF	2	1	3		1		1	1	
COLO TERR CORR FAC INF.	2	0	2				1	1	
CONTRACTS:									
BRUSH CORR FAC	251	7	258			3	70	117	68
COMMUNITY/ISP	444	13	457			7	15	22	413
TOTAL FEMALE POPULATION	2,184	31	2,215	11	27	215	461	638	863
PERCENT OF TOTAL				0.5%	1.2%	9.7%	20.8%	28.8%	39.0%

*Final custody designations for jail backlog and contracts, fugitive, community regressions, and parole revocations are not reported.

COLORADO DEPARTMENT OF CORRECTIONS
ADULT INMATE JURISDICTIONAL POPULATION (1)

DATE: 1/5/2007

DATE	MALE POPULATION			FEMALE POPULATION			TOTAL POPULATION		
	Male Population	Net Change	Fiscal Y-T-D Average	Female Population	Net Change	Fiscal Y-T-D Average	Total Population	Net Change	Fiscal Y-T-D Average
12-31-06	20,030	12	40	2,320	6	17	22,350	18	56
11-30-06	20,018	44		2,314	11		22,332	55	
10-31-06	19,974	46		2,303	28		22,277	74	
09-30-06	19,928	139		2,275	33		22,203	172	
08-31-06	19,789	-34		2,242	-7		22,031	-41	
07-31-06	19,823	31		2,249	29		22,072	60	
06-30-06	19,792	153		2,220	25		22,012	178	
05-31-06	19,639	114		2,195	13		21,834	127	
04-30-06	19,525	89		2,182	28		21,707	117	
03-31-06	19,436	160		2,154	23		21,590	183	
02-28-06	19,276	31		2,131	-4		21,407	27	
01-31-06	19,245	53		2,135	-9		21,380	44	
12-31-05	19,192	117	97	2,144	7	12	21,336	124	109
11-30-05	19,075	32		2,137	9		21,212	41	
10-31-05	19,043	43		2,128	13		21,171	56	
09-30-05	19,000	71		2,115	-7		21,115	64	
08-31-05	18,929	183		2,122	19		21,051	202	
07-31-05	18,746	115		2,103	30		20,849	145	
06-30-05	18,631	123		2,073	43		20,704	166	
05-31-05	18,508	70		2,030	16		20,538	86	
04-30-05	18,438	102		2,014	32		20,452	134	
03-31-05	18,336	79		1,982	-10		20,318	69	
02-28-05	18,257	30		1,992	26		20,249	56	
01-31-05	18,227	-2		1,966	51		20,193	49	
12-31-04	18,229	56	68	1,915	11	27	20,144	67	95
11-30-04	18,173	79		1,904	27		20,077	106	
10-31-04	18,094	99		1,877	24		19,971	123	
09-30-04	17,995	-18		1,853	44		19,848	26	
08-31-04	18,013	95		1,809	44		19,822	139	
07-31-04	17,918	104		1,765	10		19,683	114	
06-30-04	17,814		49	1,755		11	19,569		60
06-30-03	17,226		57	1,620		10	18,846		67
06-30-02	16,539		87	1,506		14	18,045		101
06-30-01	15,493		63	1,340		6	16,833		70
06-30-00	14,733		99	1,266		7	15,999		106
06-30-99	13,547		75	1,179		14	14,726		89
06-30-98	12,647		81	1,016		9	13,663		89
06-30-97	11,681			909			12,590		

(1) Adult inmate jurisdictional population includes on-grounds, off-grounds, out-of-state, escapees, and jail backlog and excludes offenders sentenced to the Youthful Offender System (Y.O.S.).

COLORADO DEPARTMENT OF CORRECTIONS
ADULT INMATE RELEASES FROM PRISON
TOTAL Population (Male and Female)

(Revised) Date: 4/11/2007

	Parole				Discharge					Other				Total
	Discretionary*	Mandatory*	Mand. Repar.*	Com. Supv.	Sentence	H.B. 1087	Martin/Cooper	Chgs/Det.	Com Spv. Elim	Probation	Ct. Ord. Dsch.	Appeal Bond	Deceased	
Dec-06	349	179	59	0	27	44	10	14	0	13	6	1	2	704
Nov-06	422	202	70	0	30	45	12	12	0	16	11	0	6	826
Oct-06	426	186	84	0	36	44	11	10	0	6	7	1	5	816
Sep-06	348	180	65	0	29	44	13	15	0	13	7	0	2	716
Aug-06	430	239	104	0	37	52	10	21	0	17	11	0	2	923
Jul-06	350	174	87	0	43	52	9	20	0	17	6	0	7	765
Jun-06	375	199	89	0	37	43	10	16	0	16	7	0	2	794
May-06	317	235	75	0	34	52	10	15	0	13	9	0	3	763
Apr-06	227	235	91	0	41	54	17	17	0	10	7	0	8	707
Mar-06	305	282	113	0	39	46	10	12	0	18	5	1	2	833
Feb-06	305	250	71	0	34	39	13	10	0	27	14	0	1	764
Jan-06	316	218	75	0	45	51	11	14	0	13	6	0	7	756
Dec-05	235	238	98	0	51	47	15	17	0	18	12	0	6	737
Nov-05	183	297	126	0	37	55	7	13	0	10	18	0	5	751
Oct-05	157	304	130	0	34	58	11	19	0	17	10	1	5	746
Sep-05	142	318	90	0	30	61	17	14	0	23	6	0	3	704
Aug-05	124	312	109	0	33	47	17	20	0	14	11	0	6	693
Jul-05	121	306	109	0	46	48	13	13	0	15	9	0	8	688
Jun-05	144	312	105	0	28	57	13	16	0	22	13	0	0	710
May-05	148	313	95	0	42	61	8	14	0	16	7	1	7	712
Apr-05	121	313	125	0	40	57	9	20	0	18	12	0	10	725
Mar-05	155	311	100	0	46	64	15	21	0	24	11	1	4	752
Feb-05	132	290	109	0	58	63	16	14	0	17	12	0	5	716
Jan-05	183	274	113	0	53	54	16	19	0	10	2	0	5	729

Definitions of Release Types

Discretionary parole-Released to parole through Parole Board discretion prior to mandatory release or sentence discharge date.

Mandatory parole-Released to parole on mandatory release date.

Mand. Repar-Reparoled on specific date set by Parole Board (includes S.B. 252 reparoles). n/a - breakout not available prior to June 2004.

Com. Supv.-Released to serve 12 months of community supervision.

Sentence discharge-Completion of sentence with no further supervision.

H.B. 1087 discharge-Completion of sentence with no further supervision, subject to earn time provisions of H.B. 95-1087.

Martin/ Cooper discharge-Completion of sentence with no further supervision, sex offender subject to Martin/Cooper Supreme Court decision.

Chgs/ Det. discharge-Completion of sentence, released to other law enforcement for pending charges or detainees.

Com. Spv. Elim discharge-Completion of sentence following reincarceration on community supervision sentence.

Probation-Released by court to probation.

Ct. Ord. Dsch.-Released by court order.

Appeal Bond-Released by court to appeal bond.

Deceased-Offender death in prison.

***Due to the decrease in community transportation services, the Department implemented a procedural change in December 2005 with regards to releasing inmates on weekends. As a result of this change, discretionary releases have increased and mandatory releases have decreased.**

COLORADO DEPARTMENT OF CORRECTIONS
ADULT INMATE RELEASES FROM PRISON
Male Population Only

Date: 4/11/2007

	Parole				Discharge					Other				Total
	Discretionary*	Mandatory*	Mand. Repar.*	Com. Supv.	Sentence	H.B. 1087	Martin/Cooper	Chgs/Det.	Com Spv. Elim	Probation	Ct. Ord. Dsch.	Appeal Bond	Deceased	
Dec-06	298	160	56	0	24	38	10	14	0	13	6	1	2	622
Nov-06	358	178	62	0	28	42	12	12	0	13	10	0	6	721
Oct-06	373	163	73	0	34	36	11	9	0	6	6	1	5	717
Sep-06	300	148	59	0	29	40	13	12	0	12	7	0	2	622
Aug-06	364	209	89	0	34	44	10	21	0	14	10	0	2	797
Jul-06	310	158	72	0	40	45	9	18	0	15	4	0	7	678
Jun-06	325	180	74	0	32	41	10	13	0	15	6	0	2	698
May-06	269	202	60	0	33	47	10	15	0	12	8	0	3	659
Apr-06	178	213	79	0	35	47	17	16	0	9	6	0	8	608
Mar-06	267	246	100	0	36	41	10	12	0	14	5	1	2	734
Feb-06	253	220	63	0	33	37	13	10	0	25	14	0	1	669
Jan-06	266	187	63	0	43	48	11	13	0	12	5	0	6	654
Dec-05	193	204	84	0	48	43	15	17	0	16	11	0	4	635
Nov-05	156	251	114	0	32	47	7	12	0	10	17	0	4	650
Oct-05	127	273	101	0	32	50	11	17	0	15	10	1	4	641
Sep-05	111	283	78	0	26	57	16	12	0	22	6	0	3	614
Aug-05	98	280	94	0	31	41	17	19	0	12	8	0	6	606
Jul-05	100	253	95	0	43	47	13	13	0	11	8	0	8	591
Jun-05	113	280	94	0	25	52	13	13	0	20	13	0	0	623
May-05	127	270	83	0	39	54	8	14	0	15	6	1	6	623
Apr-05	103	270	109	0	37	49	9	20	0	16	8	0	10	631
Mar-05	129	275	82	0	43	62	15	19	0	23	10	1	4	663
Feb-05	109	259	100	0	53	57	16	13	0	15	11	0	5	638
Jan-05	159	250	99	0	50	48	16	18	0	8	2	0	4	654

Definitions of Release Types

Discretionary parole-Released to parole through Parole Board discretion prior to mandatory release or sentence discharge date.

Mandatory parole-Released to parole on mandatory release date.

Mand. Repar-Reparoled on specific date set by Parole Board (includes S.B. 252 reparoles). n/a - breakout not available prior to June 2004.

Com. Supv.-Released to serve 12 months of community supervision.

Sentence discharge-Completion of sentence with no further supervision.

H.B. 1087 discharge-Completion of sentence with no further supervision, subject to earn time provisions of H.B. 95-1087.

Martin/ Cooper discharge-Completion of sentence with no further supervision, sex offender subject to Martin/Cooper Supreme Court decision.

Chgs/ Det. discharge-Completion of sentence, released to other law enforcement for pending charges or detainees.

Com. Spv. Elim discharge-Completion of sentence following reincarceration on community supervision sentence.

Probation-Released by court to probation.

Ct. Ord. Dsch.-Released by court order.

Appeal Bond-Released by court to appeal bond.

Deceased-Offender death in prison.

***Due to the decrease in community transportation services, the Department implemented a procedural change in December 2005 with regards to releasing inmates on weekends. As a result of this change, discretionary releases have increased and mandatory releases have decreased.**

COLORADO DEPARTMENT OF CORRECTIONS
ADULT INMATE RELEASES FROM PRISON
Female Population Only

Date: 1/5/2007

	Parole				Discharge					Other				Total
	Discretionary*	Mandatory*	Mand. Repar.*	Com. Supv.	Sentence	H.B. 1087	Martin/Cooper	Chgs/Det.	Com Spv. Elim.	Probation	Ct. Ord. Dsch.	Appeal Bond	Deceased	
Dec-06	51	19	3	0	3	6	0	0	0	0	0	0	0	82
Nov-06	64	24	8	0	2	3	0	0	0	3	1	0	0	105
Oct-06	53	23	11	0	2	8	0	1	0	0	1	0	0	99
Sep-06	48	32	6	0	0	4	0	3	0	1	0	0	0	94
Aug-06	66	30	15	0	3	8	0	0	0	3	1	0	0	126
Jul-06	40	16	15	0	3	7	0	2	0	2	2	0	0	87
Jun-06	50	19	15	0	5	2	0	3	0	1	1	0	0	96
May-06	48	33	15	0	1	5	0	0	0	1	1	0	0	104
Apr-06	49	22	12	0	6	7	0	1	0	1	1	0	0	99
Mar-06	38	36	13	0	3	5	0	0	0	4	0	0	0	99
Feb-06	52	30	8	0	1	2	0	0	0	2	0	0	0	95
Jan-06	50	31	12	0	2	3	0	1	0	1	1	0	1	102
Dec-05	42	34	14	0	3	4	0	0	0	2	1	0	2	102
Nov-05	27	46	12	0	5	8	0	1	0	0	1	0	1	101
Oct-05	30	31	29	0	2	8	0	2	0	2	0	0	1	105
Sep-05	31	35	12	0	4	4	1	2	0	1	0	0	0	90
Aug-05	26	32	15	0	2	6	0	1	0	2	3	0	0	87
Jul-05	21	53	14	0	3	1	0	0	0	4	1	0	0	97
Jun-05	31	32	11	0	3	5	0	3	0	2	0	0	0	87
May-05	21	43	12	0	3	7	0	0	0	1	1	0	1	89
Apr-05	18	43	16	0	3	8	0	0	0	2	4	0	0	94
Mar-05	26	36	18	0	3	2	0	2	0	1	1	0	0	89
Feb-05	23	31	9	0	5	6	0	1	0	2	1	0	0	78
Jan-05	24	24	14	0	3	6	0	1	0	2	0	0	1	75

Definitions of Release Types

Discretionary parole-Released to parole through Parole Board discretion prior to mandatory release or sentence discharge date.

Mandatory parole-Released to parole on mandatory release date.

Mand. Repar-Reparoled on specific date set by Parole Board (includes S.B. 252 reparoles). n/a - breakout not available prior to June 2004.

Com. Supv.-Released to serve 12 months of community supervision.

Sentence discharge-Completion of sentence with no further supervision.

H.B. 1087 discharge-Completion of sentence with no further supervision, subject to earn time provisions of H.B. 95-1087.

Martin/ Cooper discharge-Completion of sentence with no further supervision, sex offender subject to Martin/Cooper Supreme Court decision.

Chgs/ Det. discharge-Completion of sentence, released to other law enforcement for pending charges or detainees.

Com. Spv. Elim discharge-Completion of sentence following reincarceration on community supervision sentence.

Probation-Released by court to probation.

Ct. Ord. Dsch.-Released by court order.

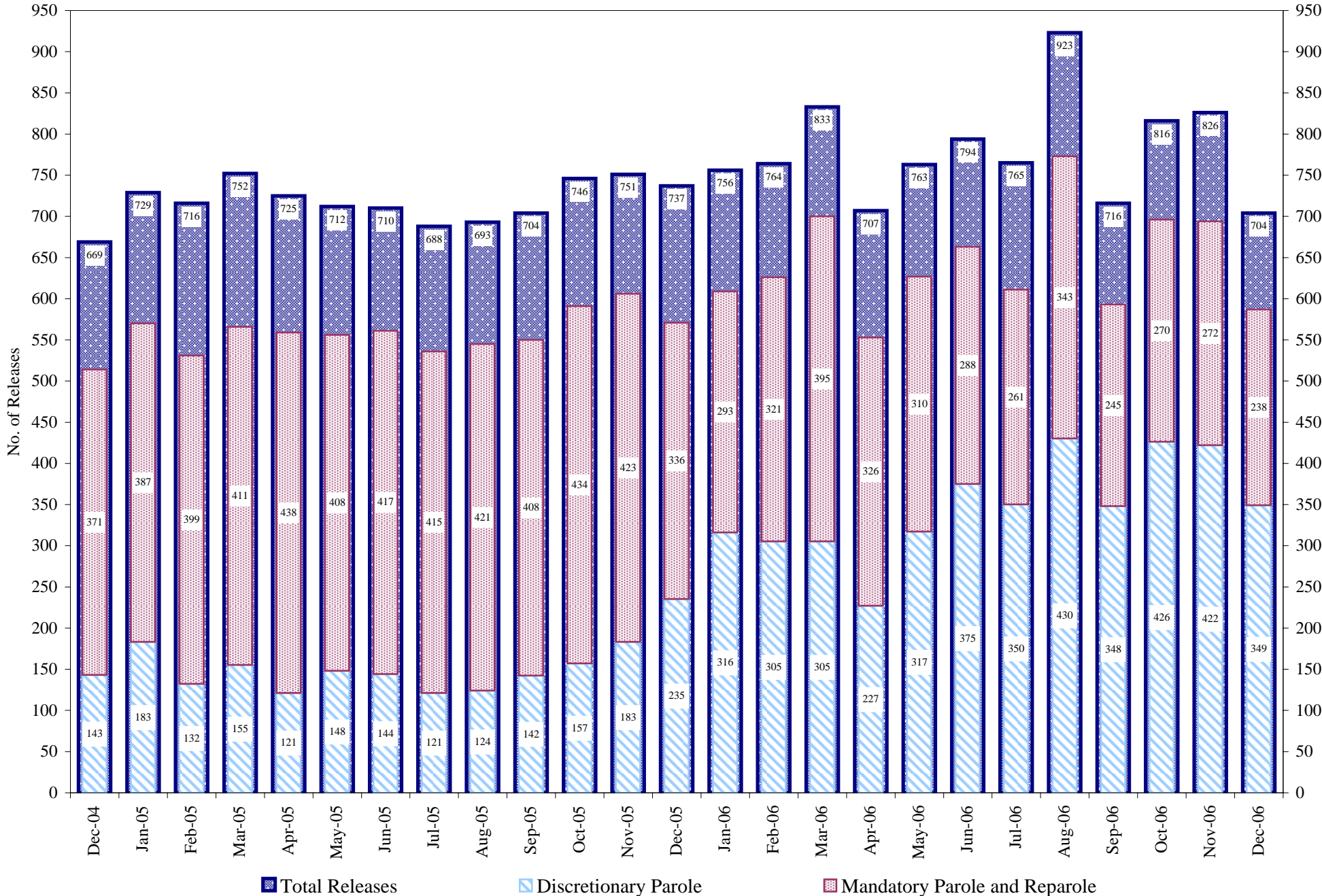
Appeal Bond-Released by court to appeal bond.

Deceased-Offender death in prison.

*Due to the decrease in community transportation services, the Department implemented a procedural change in December 2005 with regards to releasing inmates on weekends. As a result of this change, discretionary releases have increased and mandatory releases have decreased.

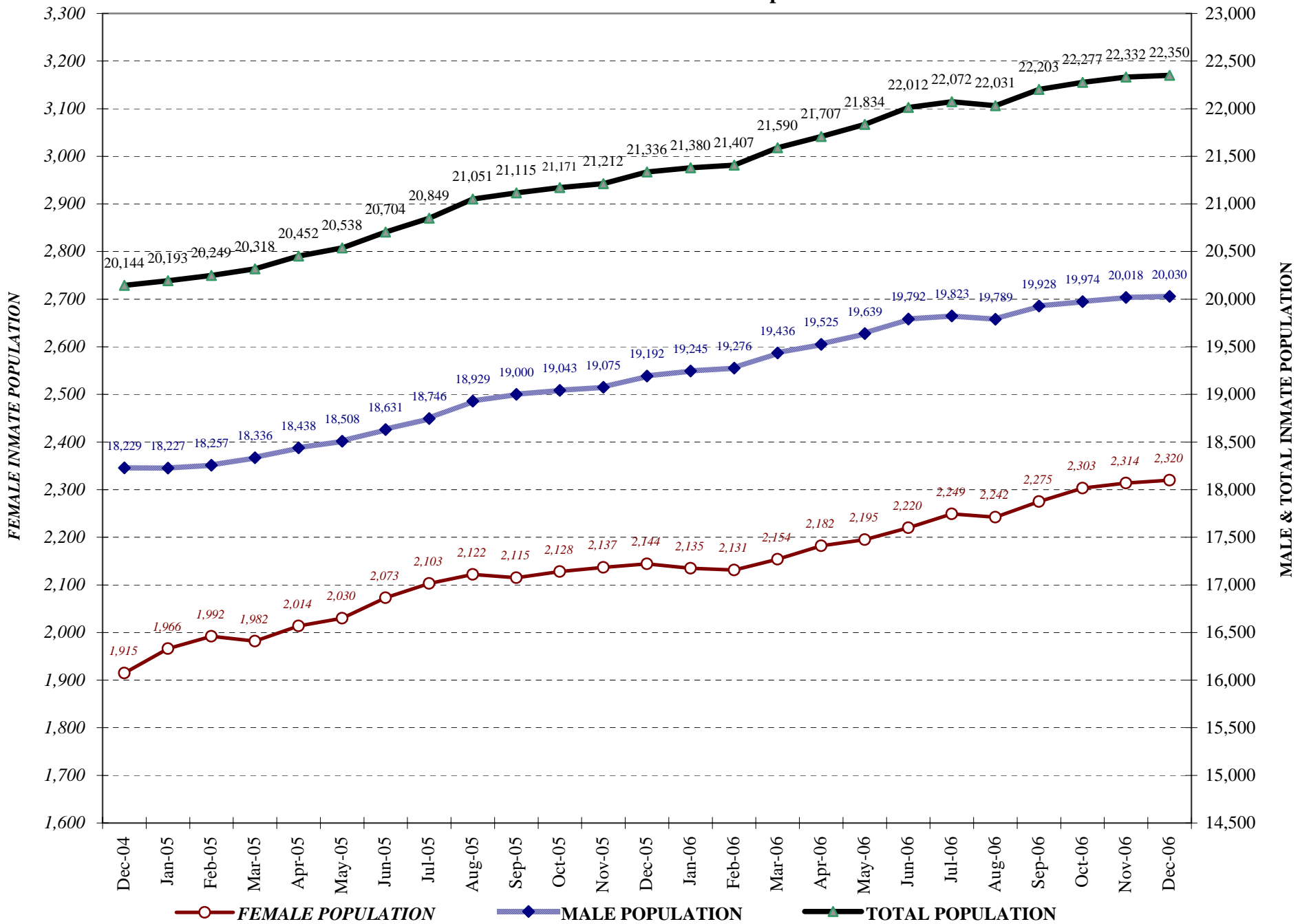
COLORADO DEPARTMENT OF CORRECTIONS

Adult Prison Releases

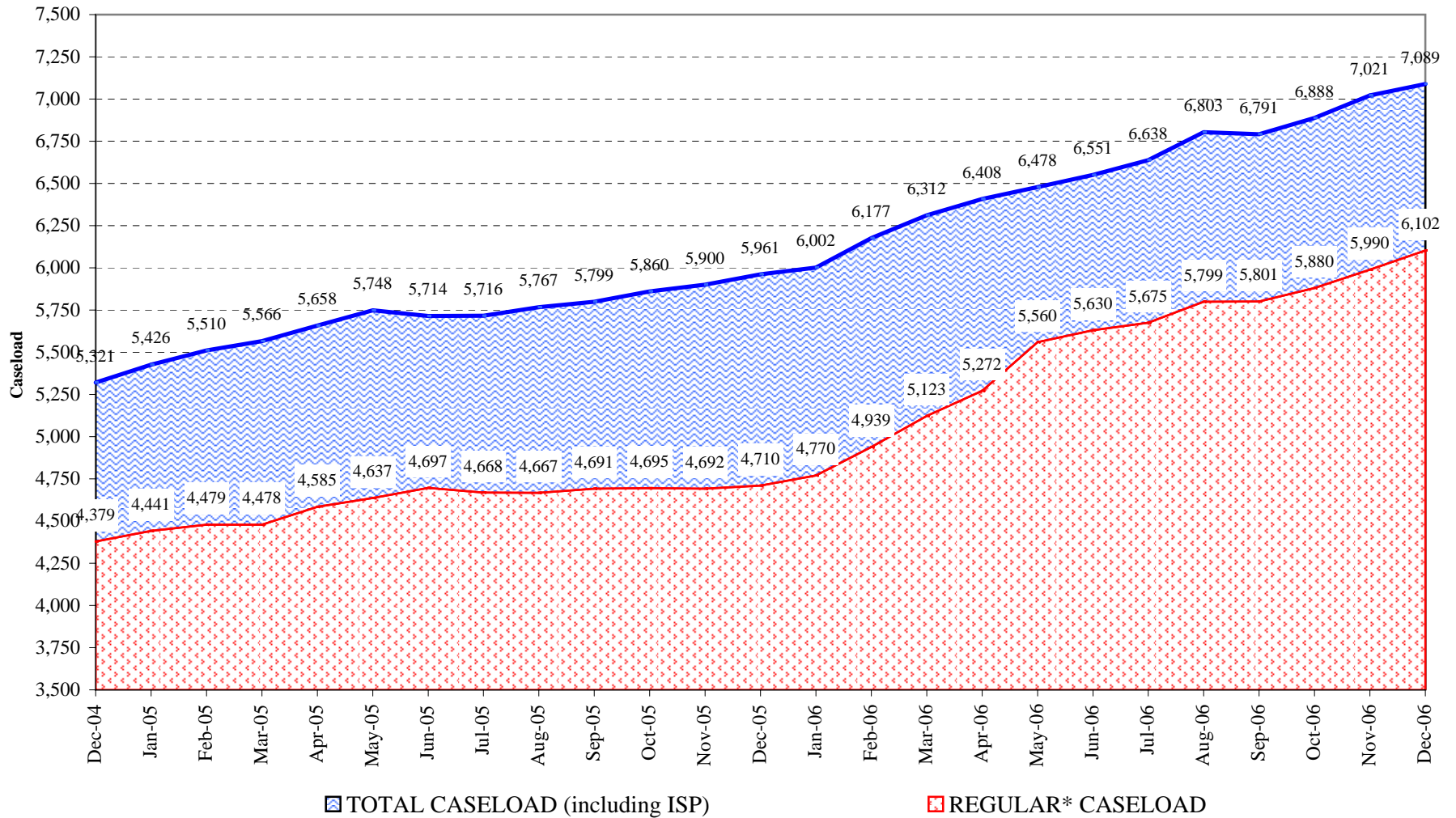


Total releases include releases to discretionary parole, mandatory parole and reparole, all types of discharges and other releases as detailed on the previous page.

COLORADO DEPARTMENT OF CORRECTIONS Adult Jurisdiction Inmate Population



COLORADO DEPARTMENT OF CORRECTIONS Parole Population



* Regular caseload includes interstate parole, but excludes out-of-state parolees and absconders.