

**COLORADO DEPARTMENT OF CORRECTIONS
MONTHLY POPULATION AND CAPACITY REPORT
AS OF NOVEMBER 30, 2006**

5-Dec-06

	10/31/06	CAPACITY CHANGES	----- 11/30/06 -----		----- 11/30/05 -----	
	OPERATIONAL CAPACITY*		OPERATIONAL CAPACITY*	ON-GRDS POPULATION	OPERATIONAL CAPACITY*	ON-GRDS POPULATION
COLO STATE PENITENTIARY	756		756	746	756	754
CENTENNIAL CORR FAC	336		336	328	320	314
STERLING CORR FAC	2,445		2,445	2,410	2,445	2,405
LIMON CORR FAC	953		953	947	953	944
ARK VALLEY CORR FAC	1,007		1,007	1,004	1,007	1,006
BUENA VISTA CORR FAC	826		826	824	826	818
BUENA VISTA MIN CTR	292		292	288	292	288
COLO TERR CORR FAC	786		786	792	786	787
FORT LYON CORR FAC	500		500	484	500	495
FREMONT CORR FAC	1,471		1,471	1,465	1,471	1,459
LA VISTA CORR FAC	375		375	352	0	0
ARROWHEAD CORR CTR	494		494	489	494	489
FOUR MILE CORR CTR	499		499	495	499	496
PUEBLO MINIMUM CTR	0		0	0	256	250
TRINIDAD CORR FAC	484		484	480	484	478
S.T.U. at Y.O.S.	30		30	30	30	26
SKYLINE CORR CTR	249		249	249	249	249
COLORADO CORR CTR	150		150	149	150	148
DELTA CORR CTR	484		484	472	484	478
RIFLE CORR CTR	192		192	189	192	187
COLO CORR ALT PROGRAM	100		100	118	100	100
COLO WOMEN'S CORR FAC	224		224	220	224	216
DENVER WOMEN'S CORR FAC	900		900	875	900	866
DENVER REC DIAG CTR	480		480	482	480	496
SAN CARLOS CORR FAC	255		255	246	255	250
SUBTOTAL	14,288	0	14,288	14,134	14,153	13,999
CONTRACTS:						
BENT COUNTY CORR CTR	724		724	709	724	728
HUERFANO COUNTY CORR CTR	774		774	769	778	755
CROWLEY COUNTY CORR FAC	1,754		1,754	1,660	1,820	1,023
KIT CARSON COUNTY CORR FAC	824		824	801	820	781
TALLAHATCHIE MS CORR FAC	0		0	0	0	0
CHEYENNE MTN REENTRY CTR	500		500	476	500	336
BRUSH CORR FAC	270		270	255	270	268
OFF-GROUNDS POPULATION:						
ESCAPEES/WALKAWAYS				227		209
REVOCATIONS-JAIL				249		282
				0		0
JAIL BACKLOG:						
BACKLOG LESS THAN 72 HOURS			111		43	
BACKLOG GREATER THAN 72 HOURS (FISCAL YTD AVE = 400)			246		296	
BACKLOG-PAROLEES AWAITING TRANSFER			68		71	
TOTAL JAIL BACKLOG				425		410
COUNTY JAIL CONTRACTS				43		52
COMMUNITY CORRECTIONS						
COMMUNITY						
RESIDENTIAL	1,318	-38	1,280	1,280	1,226	1,226
PAROLE REVOCATIONS	0	0	0	0	1	1
REVOKED-RET TO CUST	226	-5	221	221	178	178
NON-RESIDENTIAL	67	4	71	71	57	57
REGRESSIONS	86	21	107	107	38	38
TOTAL COMMUNITY	1,697	-18	1,679	1,679	1,500	1,500
ISP						
RESIDENTIAL	822	25	847	847	826	826
NON-RESIDENTIAL	32	9	41	41	37	37
REGRESSIONS	14	3	17	17	6	6
TOTAL ISP	868	37	905	905	869	869
TOTAL COMM. CORRECTIONS	2,565	19	2,584	2,584	2,369	2,369
MALE POPULATION			20,018		19,075	
FEMALE POPULATION			2,314		2,137	
TOTAL INMATE JURISDICTIONAL POPULATION				22,332		21,212

*OPERATIONAL CAPACITY INCLUDES ALL BEDS AVAILABLE FOR USE, INCLUDING MANAGEMENT CONTROL UNITS, BUT EXCLUDES EMERGENCY DOUBLE BUNKING

COLORADO DEPARTMENT OF CORRECTIONS
MONTHLY POPULATION AND CAPACITY REPORT
AS OF NOVEMBER 30, 2006

5-Dec-06

CURRENT MONTH CHANGES IN CAPACITY:

NONE

NET MONTHLY GROWTH RATE:

CURRENT MONTH	55
FISCAL YEAR-TO-DATE AVERAGE	64

YOUTHFUL OFFENDER SYSTEM

	----- 11/30/06 -----			11/30/05
	PUEBLO	CONTRACT FACILITIES	COMM. CORR.	TOTAL POPULATION
INTAKE/IDO	5			7
RFP/REMEDICATION	10			11
PHASE I	155	0		141
PHASE II	11			16
PHASE III	0		31	40
OFF GROUNDS/BACKLOG				2
TOTAL Y.O.S. POPULATION	181	0	31	216

	CURRENT MONTH	FISCAL YR. TO DATE
YOS ADMISSIONS	2	30
YOS RELEASES:		
COMPLETION OF SENTENCE	5	25
JUDICIAL RELEASE TO PROB/CT ORD DISCHG	1	2
JUDICIAL TRANSFER TO DOC	0	0
TERMINATION/FAILURE	0	6
DECEASED	0	1
TOTAL RELEASES	6	34

PAROLE CASELOAD

	----- 11/30/06 -----			----- 10/31/06 -----		----- 11/30/05 -----	
	DOMESTIC	INTERST PAR/PROB	TOTAL CASELOAD	DOMESTIC	TOTAL CASELOAD	DOMESTIC	TOTAL CASELOAD
DENVER REGION							
REGULAR	2,142	109	2,251	2,095	2,183	1,734	1,838
ISP	488		488	482	482	583	583
SUBTOTAL	2,630	109	2,739	2,577	2,683	2,317	2,421
NORTHEAST REGION							
REGULAR	1,624	47	1,671	1,572	1,485	1,183	1,221
ISP	226		226	238	238	299	299
SUBTOTAL	1,850	47	1,897	1,810	1,855	1,482	1,520
SOUTHEAST REGION							
REGULAR	1,351	85	1,436	1,366	1,332	1,030	1,092
ISP	228		228	198	198	237	237
SUBTOTAL	1,579	85	1,664	1,564	1,648	1,267	1,329
WESTERN REGION							
REGULAR	589	43	632	570	630	495	541
ISP	89		89	90	90	89	89
SUBTOTAL	678	43	721	660	702	584	630
TOTAL CASELOAD							
REGULAR	5,706	284	5,990	5,603	5,880	4,442	4,692
ISP	1,031		1,031	1,008	1,008	1,208	1,208
TOTAL	6,737	284	7,021	6,611	6,888	5,650	5,900
ADDITIONAL CASELOAD:							
OUT-OF-STATE PAROLEES			1,739		1,730		1,567
PAROLEE ABSCONDERS			719		733		649

COLORADO DEPARTMENT OF CORRECTIONS
MONTHLY POPULATION AND CAPACITY REPORT
AS OF NOVEMBER 30, 2006

5-Dec-06

	11/30/2006 POPULATION			----- FINAL CUSTODY DESIGNATION* -----					
	On-Grds.	Off-Grds	TOTAL	Uncls.	Ad.Seg	Close	Medium	Min.-Res.	Minimum
MALE POPULATION									
COLO STATE PENITENTIARY	746	5	751		750	1			
CENTENNIAL CORR FAC	328	2	330		137	185	4	1	3
STERLING CORR FAC	2,410	14	2,424		226	745	551	525	377
LIMON CORR FAC	947	5	952		13	681	193	48	17
ARK VALLEY CORR FAC	1,004	17	1,021		8	467	344	141	61
BUENA VISTA CORR FAC	824	15	839		15	384	281	107	52
BUENA VISTA MIN CTR	288	4	292				2	214	76
COLO TERR CORR FAC	791	7	798		9	203	237	205	144
FORT LYON CORR FAC	484	5	489			31	233	145	80
FREMONT CORR FAC	1,465	8	1,473		10	168	402	577	316
ARROWHEAD CORR CTR	489	3	492				1	298	193
FOUR MILE CORR CTR	495	1	496					332	164
TRINIDAD CORR FAC	480	7	487				2	412	73
S.T.U. at Y.O.S.	30	1	31					25	6
SKYLINE CORR CTR	249	1	250					2	248
COLORADO CORR CTR	149	0	149					2	147
DELTA CORR CTR	472	5	477						477
RIFLE CORR CTR	189	2	191						191
COLO CORR ALT PROGRAM	113	8	121				3	19	99
DENVER REC DIAG CTR	475	10	485	162	8	55	86	126	48
SAN CARLOS CORR FAC	246	3	249		24	100	60	28	37
CONTRACTS:									
BENT COUNTY CORR CTR	709	12	721			10	349	210	152
HUERFANO COUNTY CORR CTR	769	15	784		2	14	436	209	123
CROWLEY COUNTY CORR FAC	1,660	36	1,696			5	1,001	448	242
KIT CARSON COUNTY CORR FAC	801	13	814			13	404	250	147
CHEYENNE MTN REENTRY CTR	476	4	480			7	132	225	116
COMMUNITY/ISP	1,691	92	1,783			6	32	22	1,723
TOTAL MALE POPULATION	18,780	295	19,075	162	1,202	3,075	4,753	4,571	5,312
PERCENT OF TOTAL				0.8%	6.3%	16.1%	24.9%	24.0%	27.8%
FEMALE POPULATION									
COLO WOMEN'S CORR FAC	220	1	221		1	69	68	37	46
DENVER WOMEN'S CORR FAC	875	11	886	24	25	131	221	287	198
LA VISTA CORR FAC	352	6	358			2	119	134	103
COLO CORR ALT PROGRAM	5	1	6					1	5
DENVER REC DIAG CTR INF	7	0	7			1	3	2	1
COLO TERR CORR FAC INF.	1	0	1				1		
CONTRACTS:									
BRUSH CORR FAC	255	5	260			2	75	120	63
COMMUNITY/ISP	436	20	456			3	10	13	430
TOTAL FEMALE POPULATION	2,151	44	2,195	24	26	208	497	594	846
PERCENT OF TOTAL				1.1%	1.2%	9.5%	22.6%	27.1%	38.5%

*Final custody designations for jail backlog and contracts, fugitive, community regressions, and parole revocations are not reported.

COLORADO DEPARTMENT OF CORRECTIONS
ADULT INMATE JURISDICTIONAL POPULATION (1)

DATE: 12/5/2006

DATE	MALE POPULATION			FEMALE POPULATION			TOTAL POPULATION		
	Male Population	Net Change	Fiscal Y-T-D Average	Female Population	Net Change	Fiscal Y-T-D Average	Total Population	Net Change	Fiscal Y-T-D Average
11-30-06	20,018	44	45	2,314	11	19	22,332	55	64
10-31-06	19,974	46		2,303	28		22,277	74	
09-30-06	19,928	139		2,275	33		22,203	172	
08-31-06	19,789	-34		2,242	-7		22,031	-41	
07-31-06	19,823	31		2,249	29		22,072	60	
06-30-06	19,792	153		2,220	25		22,012	178	
05-31-06	19,639	114		2,195	13		21,834	127	
04-30-06	19,525	89		2,182	28		21,707	117	
03-31-06	19,436	160		2,154	23		21,590	183	
02-28-06	19,276	31		2,131	-4		21,407	27	
01-31-06	19,245	53		2,135	-9		21,380	44	
12-31-05	19,192	117	97	2,144	7	12	21,336	124	109
11-30-05	19,075	32		2,137	9		21,212	41	
10-31-05	19,043	43		2,128	13		21,171	56	
09-30-05	19,000	71		2,115	-7		21,115	64	
08-31-05	18,929	183		2,122	19		21,051	202	
07-31-05	18,746	115		2,103	30		20,849	145	
06-30-05	18,631	123		2,073	43		20,704	166	
05-31-05	18,508	70		2,030	16		20,538	86	
04-30-05	18,438	102		2,014	32		20,452	134	
03-31-05	18,336	79		1,982	-10		20,318	69	
02-28-05	18,257	30		1,992	26		20,249	56	
01-31-05	18,227	-2		1,966	51		20,193	49	
12-31-04	18,229	56	68	1,915	11	27	20,144	67	95
11-30-04	18,173	79		1,904	27		20,077	106	
10-31-04	18,094	99		1,877	24		19,971	123	
09-30-04	17,995	-18		1,853	44		19,848	26	
08-31-04	18,013	95		1,809	44		19,822	139	
07-31-04	17,918	104		1,765	10		19,683	114	
06-30-04	17,814		49	1,755		11	19,569		60
06-30-03	17,226		57	1,620		10	18,846		67
06-30-02	16,539		87	1,506		14	18,045		101
06-30-01	15,493		63	1,340		6	16,833		70
06-30-00	14,733		99	1,266		7	15,999		106
06-30-99	13,547		75	1,179		14	14,726		89
06-30-98	12,647		81	1,016		9	13,663		89
06-30-97	11,681			909			12,590		

(1) Adult inmate jurisdictional population includes on-grounds, off-grounds, out-of-state, escapees, and jail backlog and excludes offenders sentenced to the Youthful Offender System (Y.O.S.).

COLORADO DEPARTMENT OF CORRECTIONS
ADULT INMATE RELEASES FROM PRISON
TOTAL Population (Male and Female)

(Revised) Date: 4/11/2007

	Parole				Discharge					Other				Total
	Discretionary*	Mandatory*	Mand. Repar.*	Com. Supv.	Sentence	H.B. 1087	Martin/Cooper	Chgs/Det.	Com Spv. Elim	Probation	Ct. Ord. Dsch.	Appeal Bond	Deceased	
Nov-06	422	202	70	0	30	45	12	12	0	16	11	0	6	826
Oct-06	426	186	84	0	36	44	11	10	0	6	7	1	5	816
Sep-06	348	180	65	0	29	44	13	15	0	13	7	0	2	716
Aug-06	430	239	104	0	37	52	10	21	0	17	11	0	2	923
Jul-06	350	174	87	0	43	52	9	20	0	17	6	0	7	765
Jun-06	375	199	89	0	37	43	10	16	0	16	7	0	2	794
May-06	317	235	75	0	34	52	10	15	0	13	9	0	3	763
Apr-06	227	235	91	0	41	54	17	17	0	10	7	0	8	707
Mar-06	305	282	113	0	39	46	10	12	0	18	5	1	2	833
Feb-06	305	250	71	0	34	39	13	10	0	27	14	0	1	764
Jan-06	316	218	75	0	45	51	11	14	0	13	6	0	7	756
Dec-05	235	238	98	0	51	47	15	17	0	18	12	0	6	737
Nov-05	183	297	126	0	37	55	7	13	0	10	18	0	5	751
Oct-05	157	304	130	0	34	58	11	19	0	17	10	1	5	746
Sep-05	142	318	90	0	30	61	17	14	0	23	6	0	3	704
Aug-05	124	312	109	0	33	47	17	20	0	14	11	0	6	693
Jul-05	121	306	109	0	46	48	13	13	0	15	9	0	8	688
Jun-05	144	312	105	0	28	57	13	16	0	22	13	0	0	710
May-05	148	313	95	0	42	61	8	14	0	16	7	1	7	712
Apr-05	121	313	125	0	40	57	9	20	0	18	12	0	10	725
Mar-05	155	311	100	0	46	64	15	21	0	24	11	1	4	752
Feb-05	132	290	109	0	58	63	16	14	0	17	12	0	5	716
Jan-05	183	274	113	0	53	54	16	19	0	10	2	0	5	729
Dec-04	143	273	98	0	35	47	15	12	0	24	15	1	6	669

Definitions of Release Types

Discretionary parole-Released to parole through Parole Board discretion prior to mandatory release or sentence discharge date.

Mandatory parole-Released to parole on mandatory release date.

Mand. Repar-Reparoled on specific date set by Parole Board (includes S.B. 252 reparoles). n/a - breakout not available prior to June 2004.

Com. Supv.-Released to serve 12 months of community supervision.

Sentence discharge-Completion of sentence with no further supervision.

H.B. 1087 discharge-Completion of sentence with no further supervision, subject to earn time provisions of H.B. 95-1087.

Martin/ Cooper discharge-Completion of sentence with no further supervision, sex offender subject to Martin/Cooper Supreme Court decision.

Chgs/ Det. discharge-Completion of sentence, released to other law enforcement for pending charges or detainees.

Com. Spv. Elim discharge-Completion of sentence following reincarceration on community supervision sentence.

Probation-Released by court to probation.

Ct. Ord. Dsch.-Released by court order.

Appeal Bond-Released by court to appeal bond.

Deceased-Offender death in prison.

***Due to the decrease in community transportation services, the Department implemented a procedural change in December 2005 with regards to releasing inmates on weekends. As a result of this change, discretionary releases have increased and mandatory releases have decreased.**

COLORADO DEPARTMENT OF CORRECTIONS
ADULT INMATE RELEASES FROM PRISON
Male Population Only

(Revised) Date: 4/11/2007

	Parole				Discharge					Other				Total
	Discretionary*	Mandatory*	Mand. Repar.*	Com. Supv.	Sentence	H.B. 1087	Martin/Cooper	Chgs/Det.	Com Spv. Elim	Probation	Ct. Ord. Dsch.	Appeal Bond	Deceased	
Nov-06	358	178	62	0	28	42	12	12	0	13	10	0	6	721
Oct-06	373	163	73	0	34	36	11	9	0	6	6	1	5	717
Sep-06	300	148	59	0	29	40	13	12	0	12	7	0	2	622
Aug-06	364	209	89	0	34	44	10	21	0	14	10	0	2	797
Jul-06	310	158	72	0	40	45	9	18	0	15	4	0	7	678
Jun-06	325	180	74	0	32	41	10	13	0	15	6	0	2	698
May-06	269	202	60	0	33	47	10	15	0	12	8	0	3	659
Apr-06	178	213	79	0	35	47	17	16	0	9	6	0	8	608
Mar-06	267	246	100	0	36	41	10	12	0	14	5	1	2	734
Feb-06	253	220	63	0	33	37	13	10	0	25	14	0	1	669
Jan-06	266	187	63	0	43	48	11	13	0	12	5	0	6	654
Dec-05	193	204	84	0	48	43	15	17	0	16	11	0	4	635
Nov-05	156	251	114	0	32	47	7	12	0	10	17	0	4	650
Oct-05	127	273	101	0	32	50	11	17	0	15	10	1	4	641
Sep-05	111	283	78	0	26	57	16	12	0	22	6	0	3	614
Aug-05	98	280	94	0	31	41	17	19	0	12	8	0	6	606
Jul-05	100	253	95	0	43	47	13	13	0	11	8	0	8	591
Jun-05	113	280	94	0	25	52	13	13	0	20	13	0	0	623
May-05	127	270	83	0	39	54	8	14	0	15	6	1	6	623
Apr-05	103	270	109	0	37	49	9	20	0	16	8	0	10	631
Mar-05	129	275	82	0	43	62	15	19	0	23	10	1	4	663
Feb-05	109	259	100	0	53	57	16	13	0	15	11	0	5	638
Jan-05	159	250	99	0	50	48	16	18	0	8	2	0	4	654
Dec-04	118	238	82	0	33	46	15	12	0	21	14	0	6	585

Definitions of Release Types

Discretionary parole-Released to parole through Parole Board discretion prior to mandatory release or sentence discharge date.

Mandatory parole-Released to parole on mandatory release date.

Mand. Repar-Reparoled on specific date set by Parole Board (includes S.B. 252 reparoles). n/a - breakout not available prior to June 2004.

Com. Supv.-Released to serve 12 months of community supervision.

Sentence discharge-Completion of sentence with no further supervision.

H.B. 1087 discharge-Completion of sentence with no further supervision, subject to earn time provisions of H.B. 95-1087.

Martin/ Cooper discharge-Completion of sentence with no further supervision, sex offender subject to Martin/Cooper Supreme Court decision.

Chgs/ Det. discharge-Completion of sentence, released to other law enforcement for pending charges or detainees.

Com. Spv. Elim discharge-Completion of sentence following reincarceration on community supervision sentence.

Probation-Released by court to probation.

Ct. Ord. Dsch.-Released by court order.

Appeal Bond-Released by court to appeal bond.

Deceased-Offender death in prison.

***Due to the decrease in community transportation services, the Department implemented a procedural change in December 2005 with regards to releasing inmates on weekends. As a result of this change, discretionary releases have increased and mandatory releases have decreased.**

COLORADO DEPARTMENT OF CORRECTIONS
ADULT INMATE RELEASES FROM PRISON
Female Population Only

Date: 12/5/2006

	Parole				Discharge					Other				Total
	Discretionary*	Mandatory*	Mand. Repar.*	Com. Supv.	Sentence	H.B. 1087	Martin/Cooper	Chgs/Det.	Com Spv. Elim	Probation	Ct. Ord. Dsch.	Appeal Bond	Deceased	
Nov-06	64	24	8	0	2	3	0	0	0	3	1	0	0	105
Oct-06	53	23	11	0	2	8	0	1	0	0	1	0	0	99
Sep-06	48	32	6	0	0	4	0	3	0	1	0	0	0	94
Aug-06	66	30	15	0	3	8	0	0	0	3	1	0	0	126
Jul-06	40	16	15	0	3	7	0	2	0	2	2	0	0	87
Jun-06	50	19	15	0	5	2	0	3	0	1	1	0	0	96
May-06	48	33	15	0	1	5	0	0	0	1	1	0	0	104
Apr-06	49	22	12	0	6	7	0	1	0	1	1	0	0	99
Mar-06	38	36	13	0	3	5	0	0	0	4	0	0	0	99
Feb-06	52	30	8	0	1	2	0	0	0	2	0	0	0	95
Jan-06	50	31	12	0	2	3	0	1	0	1	1	0	1	102
Dec-05	42	34	14	0	3	4	0	0	0	2	1	0	2	102
Nov-05	27	46	12	0	5	8	0	1	0	0	1	0	1	101
Oct-05	30	31	29	0	2	8	0	2	0	2	0	0	1	105
Sep-05	31	35	12	0	4	4	1	2	0	1	0	0	0	90
Aug-05	26	32	15	0	2	6	0	1	0	2	3	0	0	87
Jul-05	21	53	14	0	3	1	0	0	0	4	1	0	0	97
Jun-05	31	32	11	0	3	5	0	3	0	2	0	0	0	87
May-05	21	43	12	0	3	7	0	0	0	1	1	0	1	89
Apr-05	18	43	16	0	3	8	0	0	0	2	4	0	0	94
Mar-05	26	36	18	0	3	2	0	2	0	1	1	0	0	89
Feb-05	23	31	9	0	5	6	0	1	0	2	1	0	0	78
Jan-05	24	24	14	0	3	6	0	1	0	2	0	0	1	75
Dec-04	25	35	16	0	2	1	0	0	0	3	1	1	0	84

Definitions of Release Types

Discretionary parole-Released to parole through Parole Board discretion prior to mandatory release or sentence discharge date.

Mandatory parole-Released to parole on mandatory release date.

Mand. Repar-Reparoled on specific date set by Parole Board (includes S.B. 252 reparoles). n/a - breakout not available prior to June 2004.

Com. Supv.-Released to serve 12 months of community supervision.

Sentence discharge-Completion of sentence with no further supervision.

H.B. 1087 discharge-Completion of sentence with no further supervision, subject to earn time provisions of H.B. 95-1087.

Martin/ Cooper discharge-Completion of sentence with no further supervision, sex offender subject to Martin/Cooper Supreme Court decision.

Chgs/ Det. discharge-Completion of sentence, released to other law enforcement for pending charges or detainees.

Com. Spv. Elim discharge-Completion of sentence following reincarceration on community supervision sentence.

Probation-Released by court to probation.

Ct. Ord. Dsch.-Released by court order.

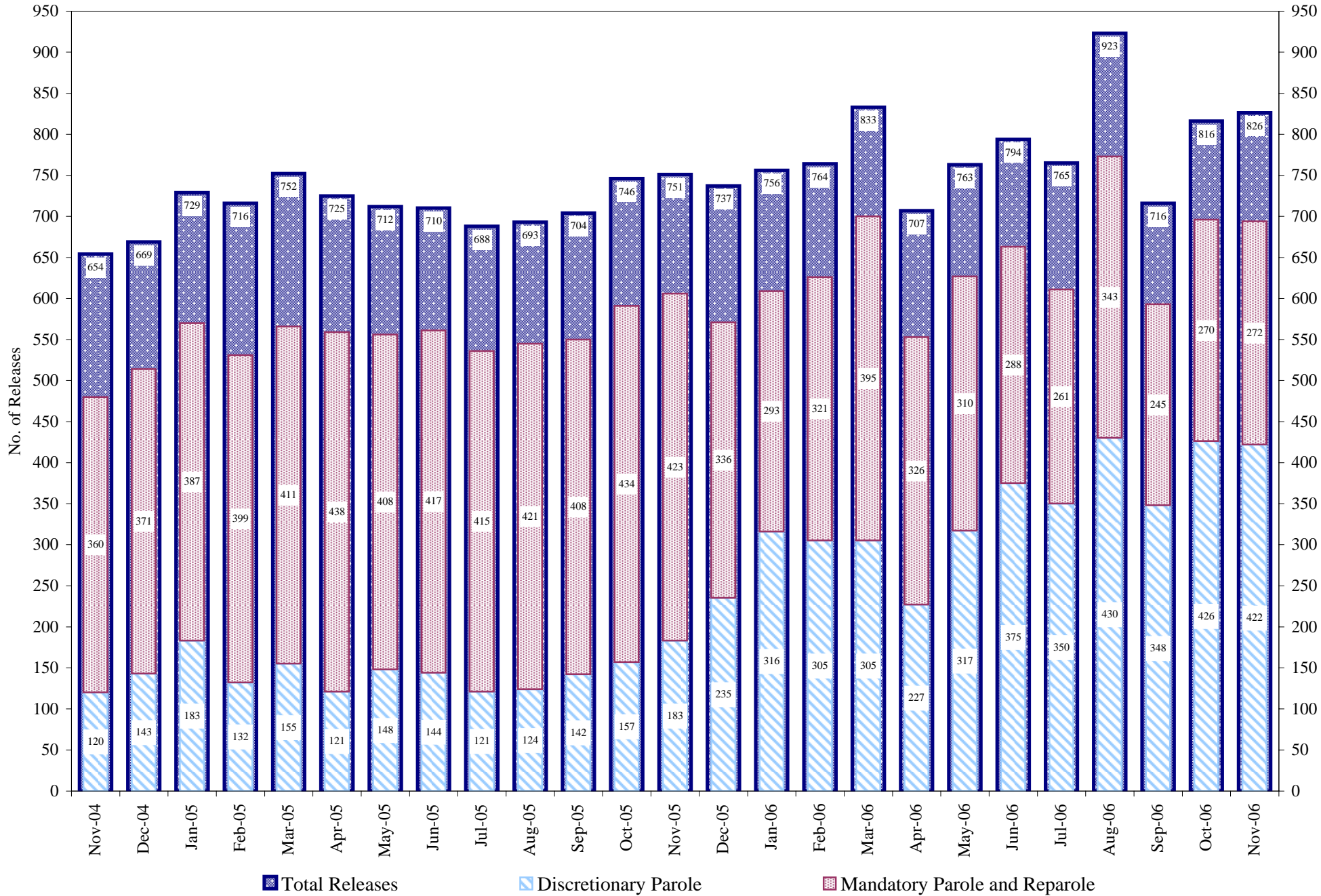
Appeal Bond-Released by court to appeal bond.

Deceased-Offender death in prison.

*Due to the decrease in community transportation services, the Department implemented a procedural change in December 2005 with regards to releasing inmates on weekends. As a result of this change, discretionary releases have increased and mandatory releases have decreased.

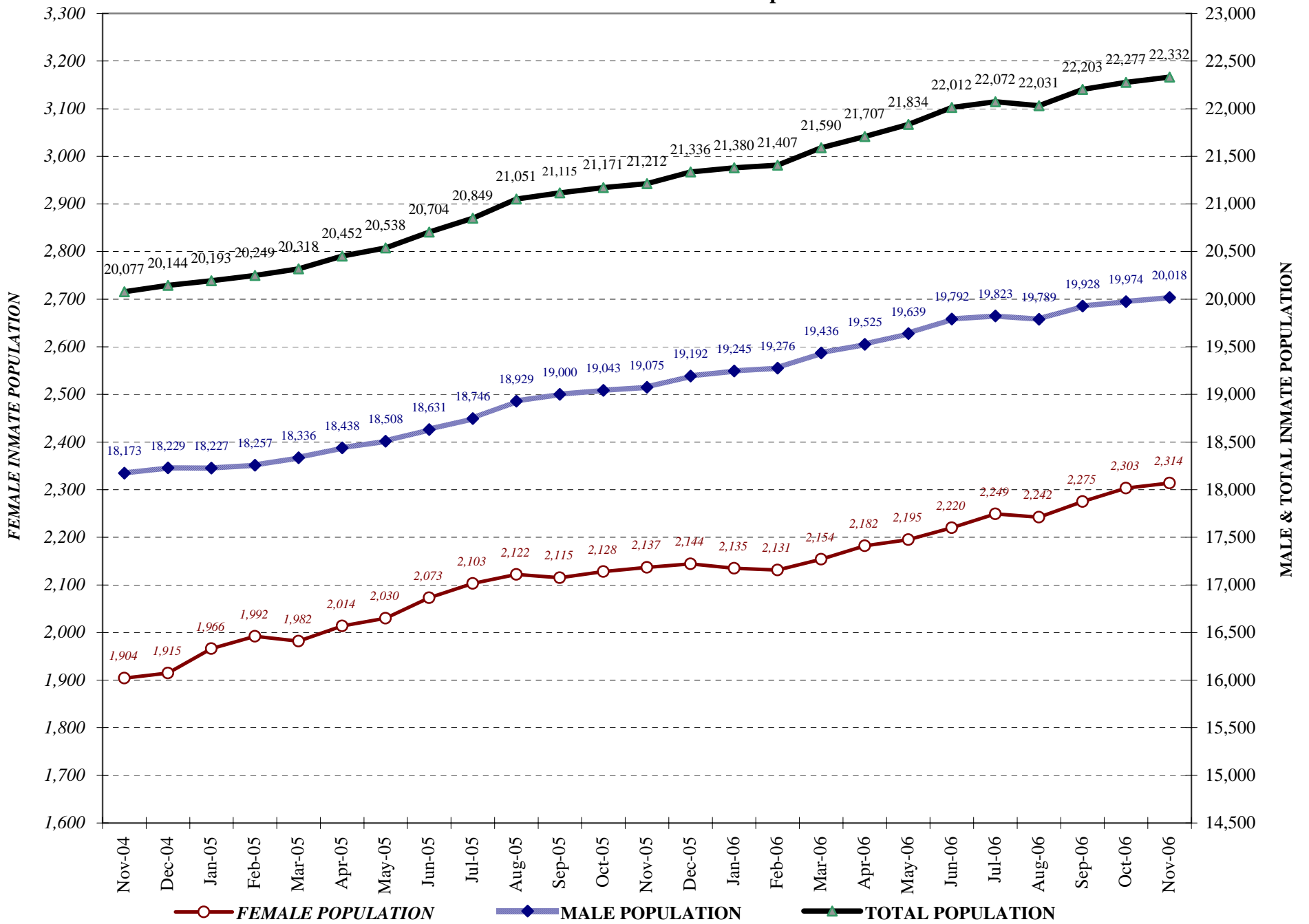
COLORADO DEPARTMENT OF CORRECTIONS

Adult Prison Releases

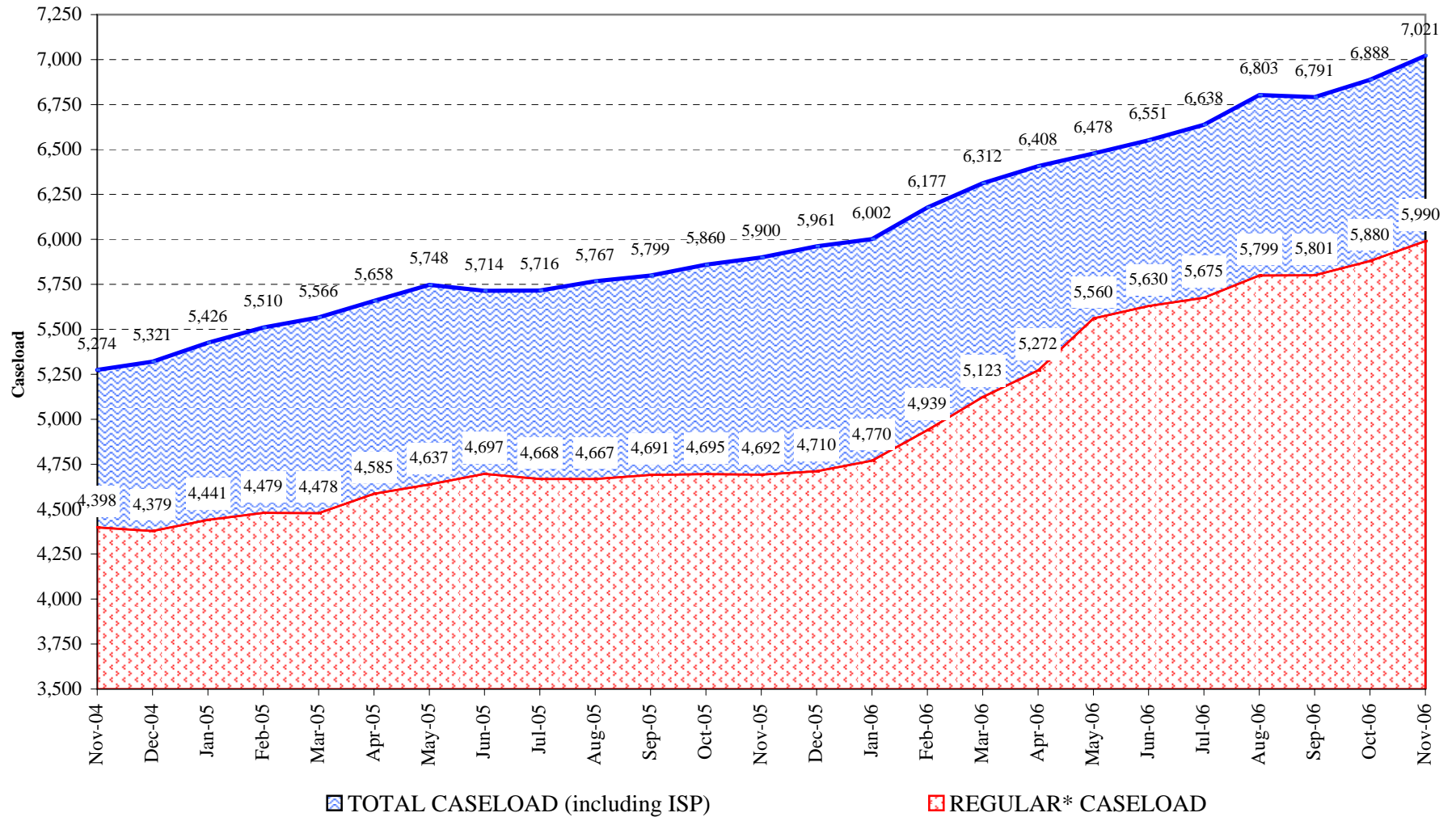


Total releases include releases to discretionary parole, mandatory parole and reparole, all types of discharges and other releases as detailed on the previous page.

COLORADO DEPARTMENT OF CORRECTIONS Adult Jurisdiction Inmate Population



COLORADO DEPARTMENT OF CORRECTIONS Parole Population



* Regular caseload includes interstate parole, but excludes out-of-state parolees and absconders.