

**COLORADO DEPARTMENT OF CORRECTIONS
MONTHLY POPULATION AND CAPACITY REPORT
AS OF OCTOBER 31, 2006**

2-Nov-06

	09/30/06	CAPACITY CHANGES	----- 10/31/06 -----		----- 10/31/05 -----	
	OPERATIONAL CAPACITY*		OPERATIONAL CAPACITY*	ON-GRDS POPULATION	OPERATIONAL CAPACITY*	ON-GRDS POPULATION
COLO STATE PENITENTIARY	756		756	749	756	752
CENTENNIAL CORR FAC	336		336	324	320	312
STERLING CORR FAC	2,445		2,445	2,409	2,445	2,357
LIMON CORR FAC	953		953	946	953	945
ARK VALLEY CORR FAC	1,007		1,007	1,003	1,007	1,005
BUENA VISTA CORR FAC	826		826	821	826	810
BUENA VISTA MIN CTR	292		292	287	292	288
COLO TERR CORR FAC	786		786	787	786	789
FORT LYON CORR FAC	500		500	480	500	471
FREMONT CORR FAC	1,471		1,471	1,457	1,471	1,456
LA VISTA CORR FAC	303	72	375	348	0	0
ARROWHEAD CORR CTR	494		494	491	494	489
FOUR MILE CORR CTR	499		499	493	499	496
PUEBLO MINIMUM CTR	0		0	0	256	245
TRINIDAD CORR FAC	484		484	474	484	473
S.T.U. at Y.O.S.	30		30	30	30	24
SKYLINE CORR CTR	249		249	249	249	249
COLORADO CORR CTR	150		150	145	150	140
DELTA CORR CTR	484		484	474	484	466
RIFLE CORR CTR	192		192	189	192	184
COLO CORR ALT PROGRAM	100		100	120	100	108
COLO WOMEN'S CORR FAC	224		224	211	224	220
DENVER WOMEN'S CORR FAC	900		900	858	900	860
DENVER REC DIAG CTR	480		480	489	480	496
SAN CARLOS CORR FAC	255		255	245	255	245
SUBTOTAL	14,216	72	14,288	14,079	14,153	13,880
CONTRACTS:						
BENT COUNTY CORR CTR	724		724	725	724	722
HUERFANO COUNTY CORR CTR	774		774	770	778	763
CROWLEY COUNTY CORR FAC	1,754		1,754	1,615	1,820	997
KIT CARSON COUNTY CORR FAC	824		824	805	820	801
TALLAHATCHIE MS CORR FAC	0		0	0	0	0
CHEYENNE MTN REENTRY CTR	500		500	496	500	295
BRUSH CORR FAC	270		270	267	250	214
OFF-GROUNDS POPULATION:						
ESCAPEES/WALKAWAYS				217		233
REVOCATIONS-JAIL				255		283
				0		0
JAIL BACKLOG:						
BACKLOG LESS THAN 72 HOURS			142		96	
BACKLOG GREATER THAN 72 HOURS (FISCAL YTD AVE = 407)			238		339	
BACKLOG-PAROLEES AWAITING TRANSFER			60		86	
TOTAL JAIL BACKLOG				440		521
COUNTY JAIL CONTRACTS				43		47
COMMUNITY CORRECTIONS						
COMMUNITY						
RESIDENTIAL	1,310	8	1,318	1,318	1,240	1,240
PAROLE REVOCATIONS	1	-1	0	0	0	0
REVOKED-RET TO CUST	229	-3	226	226	182	182
NON-RESIDENTIAL	74	-7	67	67	61	61
REGRESSIONS	56	30	86	86	56	56
TOTAL COMMUNITY	1,670	27	1,697	1,697	1,539	1,539
ISP						
RESIDENTIAL	814	8	822	822	843	843
NON-RESIDENTIAL	44	-12	32	32	26	26
REGRESSIONS	12	2	14	14	7	7
TOTAL ISP	870	-2	868	868	876	876
TOTAL COMM. CORRECTIONS	2,540	25	2,565	2,565	2,415	2,415
MALE POPULATION			19,974		19,043	
FEMALE POPULATION			2,303		2,128	
TOTAL INMATE JURISDICTIONAL POPULATION				22,277		21,171

*OPERATIONAL CAPACITY INCLUDES ALL BEDS AVAILABLE FOR USE, INCLUDING MANAGEMENT CONTROL UNITS, BUT EXCLUDES EMERGENCY DOUBLE BUNKING

COLORADO DEPARTMENT OF CORRECTIONS
MONTHLY POPULATION AND CAPACITY REPORT
AS OF OCTOBER 31, 2006

2-Nov-06

CURRENT MONTH CHANGES IN CAPACITY:

Oct-06 LA VISTA CORR FAC 72

NET MONTHLY GROWTH RATE:

CURRENT MONTH 74
 FISCAL YEAR-TO-DATE AVERAGE 66

YOUTHFUL OFFENDER SYSTEM

	----- 10/31/06 -----			10/31/05
	PUEBLO	CONTRACT FACILITIES	COMM. CORR.	TOTAL POPULATION
INTAKE/IDO	7			7
RFP/REMEDATION	11			11
PHASE I	152	0		152
PHASE II	10			10
PHASE III	0		34	34
OFF GROUNDS/BACKLOG				3
TOTAL Y.O.S. POPULATION	180	0	34	216

	CURRENT MONTH	FISCAL YR. TO DATE
YOS ADMISSIONS	5	28
YOS RELEASES:		
COMPLETION OF SENTENCE	6	20
JUDICIAL RELEASE TO PROB/CT ORD DISCHG	0	1
JUDICIAL TRANSFER TO DOC	0	0
TERMINATION/FAILURE	0	6
DECEASED	0	1
TOTAL RELEASES	6	28

PAROLE CASELOAD

	----- 10/31/06 -----			----- 09/30/06 -----		----- 10/31/05 -----	
	DOMESTIC	INTERST PAR/PROB	TOTAL CASELOAD	DOMESTIC	TOTAL CASELOAD	DOMESTIC	TOTAL CASELOAD
DENVER REGION							
REGULAR	2,095	106	2,201	2,064	2,183	1,750	1,854
ISP	482		482	486	486	526	526
SUBTOTAL	2,577	106	2,683	2,550	2,656	2,276	2,380
NORTHEAST REGION							
REGULAR	1,572	45	1,617	1,516	1,485	1,206	1,245
ISP	238		238	227	227	296	296
SUBTOTAL	1,810	45	1,855	1,743	1,789	1,502	1,541
SOUTHEAST REGION							
REGULAR	1,366	84	1,450	1,357	1,332	1,013	1,076
ISP	198		198	202	202	227	227
SUBTOTAL	1,564	84	1,648	1,559	1,640	1,240	1,303
WESTERN REGION							
REGULAR	570	42	612	592	630	472	520
ISP	90		90	75	75	116	116
SUBTOTAL	660	42	702	667	706	588	636
TOTAL CASELOAD							
REGULAR	5,603	277	5,880	5,529	5,801	4,441	4,695
ISP	1,008		1,008	990	990	1,165	1,165
TOTAL	6,611	277	6,888	6,519	6,791	5,606	5,860
ADDITIONAL CASELOAD:							
OUT-OF-STATE PAROLEES			1,730		1,717		1,524
PAROLEE ABSCONDERS			733		692		631

COLORADO DEPARTMENT OF CORRECTIONS
MONTHLY POPULATION AND CAPACITY REPORT
AS OF OCTOBER 31, 2006

2-Nov-06

	10/31/2006 POPULATION			----- FINAL CUSTODY DESIGNATION* -----					
	On-Grds.	Off-Grds	TOTAL	Uncls.	Ad.Seg	Close	Medium	Min.-Res.	Minimum
MALE POPULATION									
COLO STATE PENITENTIARY	749	5	754		751	3			
CENTENNIAL CORR FAC	324	0	324		138	170	5	8	3
STERLING CORR FAC	2,409	16	2,425		236	740	557	512	380
LIMON CORR FAC	946	9	955		13	691	189	48	14
ARK VALLEY CORR FAC	1,003	11	1,014		12	465	329	143	65
BUENA VISTA CORR FAC	821	12	833		14	376	289	105	49
BUENA VISTA MIN CTR	287	3	290				1	215	74
COLO TERR CORR FAC	787	18	805		13	223	246	192	131
FORT LYON CORR FAC	480	5	485			29	218	162	76
FREMONT CORR FAC	1,457	8	1,465		13	175	404	573	300
ARROWHEAD CORR CTR	491	5	496				0	298	198
FOUR MILE CORR CTR	493	5	498				0	337	161
TRINIDAD CORR FAC	474	8	482				5	413	64
S.T.U. at Y.O.S.	30	0	30				16	13	1
SKYLINE CORR CTR	249	0	249					3	246
COLORADO CORR CTR	145	1	146					3	143
DELTA CORR CTR	474	6	480				1	0	479
RIFLE CORR CTR	189	1	190					0	190
COLO CORR ALT PROGRAM	111	8	119					12	107
DENVER REC DIAG CTR	484	7	491	124	14	46	110	130	67
SAN CARLOS CORR FAC	245	5	250		25	97	56	30	42
CONTRACTS:									
BENT COUNTY CORR CTR	725	4	729		3	11	349	205	161
HUERFANO COUNTY CORR CTR	770	14	784			11	437	207	129
CROWLEY COUNTY CORR FAC	1,615	24	1,639		5	6	950	439	239
KIT CARSON COUNTY CORR FAC	805	14	819			16	418	243	142
CHEYENNE MTN REENTRY CTR	496	3	499			6	147	205	141
COMMUNITY/ISP	1,703	82	1,785			7	32	14	1,732
TOTAL MALE POPULATION	18,762	274	19,036	124	1,237	3,072	4,759	4,510	5,334
PERCENT OF TOTAL				0.7%	6.5%	16.1%	25.0%	23.7%	28.0%
FEMALE POPULATION									
COLO WOMEN'S CORR FAC	211	2	213			64	65	42	42
DENVER WOMEN'S CORR FAC	858	10	868	30	27	145	204	271	191
LA VISTA CORR FAC	348	6	354			1	111	151	91
COLO CORR ALT PROGRAM	9	0	9					3	6
DENVER REC DIAG CTR INF	5	1	6			1	2	2	1
COLO TERR CORR FAC INF.	0	0	0						
CONTRACTS:									
BRUSH CORR FAC	267	6	273				84	129	60
COMMUNITY/ISP	437	17	454			2	10	8	434
TOTAL FEMALE POPULATION	2,135	42	2,177	30	27	213	476	606	825
PERCENT OF TOTAL				1.4%	1.2%	9.8%	21.9%	27.8%	37.9%

*Final custody designations for jail backlog and contracts, fugitive, community regressions, and parole revocations are not reported.

COLORADO DEPARTMENT OF CORRECTIONS
ADULT INMATE JURISDICTIONAL POPULATION (1)

DATE: 11/2/2006

DATE	MALE POPULATION			FEMALE POPULATION			TOTAL POPULATION		
	Male Population	Net Change	Fiscal Y-T-D Average	Female Population	Net Change	Fiscal Y-T-D Average	Total Population	Net Change	Fiscal Y-T-D Average
10-31-06	19,974	46	46	2,303	28	21	22,277	74	66
09-30-06	19,928	139		2,275	33		22,203	172	
08-31-06	19,789	-34		2,242	-7		22,031	-41	
07-31-06	19,823	31		2,249	29		22,072	60	
06-30-06	19,792	153		2,220	25		22,012	178	
05-31-06	19,639	114		2,195	13		21,834	127	
04-30-06	19,525	89		2,182	28		21,707	117	
03-31-06	19,436	160		2,154	23		21,590	183	
02-28-06	19,276	31		2,131	-4		21,407	27	
01-31-06	19,245	53		2,135	-9		21,380	44	
12-31-05	19,192	117	97	2,144	7	12	21,336	124	109
11-30-05	19,075	32		2,137	9		21,212	41	
10-31-05	19,043	43		2,128	13		21,171	56	
09-30-05	19,000	71		2,115	-7		21,115	64	
08-31-05	18,929	183		2,122	19		21,051	202	
07-31-05	18,746	115		2,103	30		20,849	145	
06-30-05	18,631	123		2,073	43		20,704	166	
05-31-05	18,508	70		2,030	16		20,538	86	
04-30-05	18,438	102		2,014	32		20,452	134	
03-31-05	18,336	79		1,982	-10		20,318	69	
02-28-05	18,257	30		1,992	26		20,249	56	
01-31-05	18,227	-2		1,966	51		20,193	49	
12-31-04	18,229	56	68	1,915	11	27	20,144	67	95
11-30-04	18,173	79		1,904	27		20,077	106	
10-31-04	18,094	99		1,877	24		19,971	123	
09-30-04	17,995	-18		1,853	44		19,848	26	
08-31-04	18,013	95		1,809	44		19,822	139	
07-31-04	17,918	104		1,765	10		19,683	114	
06-30-04	17,814		49	1,755		11	19,569		60
06-30-03	17,226		57	1,620		10	18,846		67
06-30-02	16,539		87	1,506		14	18,045		101
06-30-01	15,493		63	1,340		6	16,833		70
06-30-00	14,733		99	1,266		7	15,999		106
06-30-99	13,547		75	1,179		14	14,726		89
06-30-98	12,647		81	1,016		9	13,663		89
06-30-97	11,681			909			12,590		

(1) Adult inmate jurisdictional population includes on-grounds, off-grounds, out-of-state, escapees, and jail backlog and excludes offenders sentenced to the Youthful Offender System (Y.O.S.).

COLORADO DEPARTMENT OF CORRECTIONS
ADULT INMATE RELEASES FROM PRISON
TOTAL Population (Male and Female)

(Revised) Date: 4/10/2007

	Parole				Discharge					Other				Total
	Discretionary*	Mandatory*	Mand. Repar.*	Com. Supv.	Sentence	H.B. 1087	Martin/Cooper	Chgs/Det.	Com Spv. Elim	Probation	Ct. Ord. Dsch.	Appeal Bond	Deceased	
Oct-06	426	186	84	0	36	44	11	10	0	6	7	1	5	816
Sep-06	348	180	65	0	29	44	13	15	0	13	7	0	2	716
Aug-06	430	239	104	0	37	52	10	21	0	17	11	0	2	923
Jul-06	350	174	87	0	43	52	9	20	0	17	6	0	7	765
Jun-06	375	199	89	0	37	43	10	16	0	16	7	0	2	794
May-06	317	235	75	0	34	52	10	15	0	13	9	0	3	763
Apr-06	227	235	91	0	41	54	17	17	0	10	7	0	8	707
Mar-06	305	282	113	0	39	46	10	12	0	18	5	1	2	833
Feb-06	305	250	71	0	34	39	13	10	0	27	14	0	1	764
Jan-06	316	218	75	0	45	51	11	14	0	13	6	0	7	756
Dec-05	235	238	98	0	51	47	15	17	0	18	12	0	6	737
Nov-05	183	297	126	0	37	55	7	13	0	10	18	0	5	751
Oct-05	157	304	130	0	34	58	11	19	0	17	10	1	5	746
Sep-05	142	318	90	0	30	61	17	14	0	23	6	0	3	704
Aug-05	124	312	109	0	33	47	17	20	0	14	11	0	6	693
Jul-05	121	306	109	0	46	48	13	13	0	15	9	0	8	688
Jun-05	144	312	105	0	28	57	13	16	0	22	13	0	0	710
May-05	148	313	95	0	42	61	8	14	0	16	7	1	7	712
Apr-05	121	313	125	0	40	57	9	20	0	18	12	0	10	725
Mar-05	155	311	100	0	46	64	15	21	0	24	11	1	4	752
Feb-05	132	290	109	0	58	63	16	14	0	17	12	0	5	716
Jan-05	183	274	113	0	53	54	16	19	0	10	2	0	5	729
Dec-04	143	273	98	0	35	47	15	12	0	24	15	1	6	669
Nov-04	120	287	73	0	53	60	12	17	0	16	9	3	4	654

Definitions of Release Types

Discretionary parole-Released to parole through Parole Board discretion prior to mandatory release or sentence discharge date.

Mandatory parole-Released to parole on mandatory release date.

Mand. Repar-Reparoled on specific date set by Parole Board (includes S.B. 252 reparoles). n/a - breakout not available prior to June 2004.

Com. Supv.-Released to serve 12 months of community supervision.

Sentence discharge-Completion of sentence with no further supervision.

H.B. 1087 discharge-Completion of sentence with no further supervision, subject to earn time provisions of H.B. 95-1087.

Martin/ Cooper discharge-Completion of sentence with no further supervision, sex offender subject to Martin/Cooper Supreme Court decision.

Chgs/ Det. discharge-Completion of sentence, released to other law enforcement for pending charges or detainees.

Com. Spv. Elim discharge-Completion of sentence following reincarceration on community supervision sentence.

Probation-Released by court to probation.

Ct. Ord. Dsch.-Released by court order.

Appeal Bond-Released by court to appeal bond.

Deceased-Offender death in prison.

***Due to the decrease in community transportation services, the Department implemented a procedural change in December 2005 with regards to releasing inmates on weekends. As a result of this change, discretionary releases have increased and mandatory releases have decreased.**

COLORADO DEPARTMENT OF CORRECTIONS
ADULT INMATE RELEASES FROM PRISON
Male Population Only

(Revised) Date: 4/10/2007

	Parole				Discharge					Other				Total
	Discretionary*	Mandatory*	Mand. Repar.*	Com. Supv.	Sentence	H.B. 1087	Martin/Cooper	Chgs/Det.	Com Spv. Elim	Probation	Ct. Ord. Dsch.	Appeal Bond	Deceased	
Oct-06	373	163	73	0	34	36	11	9	0	6	6	1	5	717
Sep-06	300	148	59	0	29	40	13	12	0	12	7	0	2	622
Aug-06	364	209	89	0	34	44	10	21	0	14	10	0	2	797
Jul-06	310	158	72	0	40	45	9	18	0	15	4	0	7	678
Jun-06	325	180	74	0	32	41	10	13	0	15	6	0	2	698
May-06	269	202	60	0	33	47	10	15	0	12	8	0	3	659
Apr-06	178	213	79	0	35	47	17	16	0	9	6	0	8	608
Mar-06	267	246	100	0	36	41	10	12	0	14	5	1	2	734
Feb-06	253	220	63	0	33	37	13	10	0	25	14	0	1	669
Jan-06	266	187	63	0	43	48	11	13	0	12	5	0	6	654
Dec-05	193	204	84	0	48	43	15	17	0	16	11	0	4	635
Nov-05	156	251	114	0	32	47	7	12	0	10	17	0	4	650
Oct-05	127	273	101	0	32	50	11	17	0	15	10	1	4	641
Sep-05	111	283	78	0	26	57	16	12	0	22	6	0	3	614
Aug-05	98	280	94	0	31	41	17	19	0	12	8	0	6	606
Jul-05	100	253	95	0	43	47	13	13	0	11	8	0	8	591
Jun-05	113	280	94	0	25	52	13	13	0	20	13	0	0	623
May-05	127	270	83	0	39	54	8	14	0	15	6	1	6	623
Apr-05	103	270	109	0	37	49	9	20	0	16	8	0	10	631
Mar-05	129	275	82	0	43	62	15	19	0	23	10	1	4	663
Feb-05	109	259	100	0	53	57	16	13	0	15	11	0	5	638
Jan-05	159	250	99	0	50	48	16	18	0	8	2	0	4	654
Dec-04	118	238	82	0	33	46	15	12	0	21	14	0	6	585
Nov-04	103	250	63	0	50	56	12	16	0	15	8	3	4	580

Definitions of Release Types

Discretionary parole-Released to parole through Parole Board discretion prior to mandatory release or sentence discharge date.

Mandatory parole-Released to parole on mandatory release date.

Mand. Repar-Reparoled on specific date set by Parole Board (includes S.B. 252 reparoles). n/a - breakout not available prior to June 2004.

Com. Supv.-Released to serve 12 months of community supervision.

Sentence discharge-Completion of sentence with no further supervision.

H.B. 1087 discharge-Completion of sentence with no further supervision, subject to earn time provisions of H.B. 95-1087.

Martin/ Cooper discharge-Completion of sentence with no further supervision, sex offender subject to Martin/Cooper Supreme Court decision.

Chgs/ Det. discharge-Completion of sentence, released to other law enforcement for pending charges or detainees.

Com. Spv. Elim discharge-Completion of sentence following reincarceration on community supervision sentence.

Probation-Released by court to probation.

Ct. Ord. Dsch.-Released by court order.

Appeal Bond-Released by court to appeal bond.

Deceased-Offender death in prison.

***Due to the decrease in community transportation services, the Department implemented a procedural change in December 2005 with regards to releasing inmates on weekends. As a result of this change, discretionary releases have increased and mandatory releases have decreased.**

COLORADO DEPARTMENT OF CORRECTIONS
ADULT INMATE RELEASES FROM PRISON
Female Population Only

Date: 11/2/2006

	Parole				Discharge					Other				Total
	Discretionary*	Mandatory*	Mand. Repar.*	Com. Supv.	Sentence	H.B. 1087	Martin/Cooper	Chgs/Det.	Com Spv. Elim	Probation	Ct. Ord. Dsch.	Appeal Bond	Deceased	
Oct-06	53	23	11	0	2	8	0	1	0	0	1	0	0	99
Sep-06	48	32	6	0	0	4	0	3	0	1	0	0	0	94
Aug-06	66	30	15	0	3	8	0	0	0	3	1	0	0	126
Jul-06	40	16	15	0	3	7	0	2	0	2	2	0	0	87
Jun-06	50	19	15	0	5	2	0	3	0	1	1	0	0	96
May-06	48	33	15	0	1	5	0	0	0	1	1	0	0	104
Apr-06	49	22	12	0	6	7	0	1	0	1	1	0	0	99
Mar-06	38	36	13	0	3	5	0	0	0	4	0	0	0	99
Feb-06	52	30	8	0	1	2	0	0	0	2	0	0	0	95
Jan-06	50	31	12	0	2	3	0	1	0	1	1	0	1	102
Dec-05	42	34	14	0	3	4	0	0	0	2	1	0	2	102
Nov-05	27	46	12	0	5	8	0	1	0	0	1	0	1	101
Oct-05	30	31	29	0	2	8	0	2	0	2	0	0	1	105
Sep-05	31	35	12	0	4	4	1	2	0	1	0	0	0	90
Aug-05	26	32	15	0	2	6	0	1	0	2	3	0	0	87
Jul-05	21	53	14	0	3	1	0	0	0	4	1	0	0	97
Jun-05	31	32	11	0	3	5	0	3	0	2	0	0	0	87
May-05	21	43	12	0	3	7	0	0	0	1	1	0	1	89
Apr-05	18	43	16	0	3	8	0	0	0	2	4	0	0	94
Mar-05	26	36	18	0	3	2	0	2	0	1	1	0	0	89
Feb-05	23	31	9	0	5	6	0	1	0	2	1	0	0	78
Jan-05	24	24	14	0	3	6	0	1	0	2	0	0	1	75
Dec-04	25	35	16	0	2	1	0	0	0	3	1	1	0	84
Nov-04	17	37	10	0	3	4	0	1	0	1	1	0	0	74

Definitions of Release Types

Discretionary parole-Released to parole through Parole Board discretion prior to mandatory release or sentence discharge date.

Mandatory parole-Released to parole on mandatory release date.

Mand. Repar-Reparoled on specific date set by Parole Board (includes S.B. 252 reparoles). n/a - breakout not available prior to June 2004.

Com. Supv.-Released to serve 12 months of community supervision.

Sentence discharge-Completion of sentence with no further supervision.

H.B. 1087 discharge-Completion of sentence with no further supervision, subject to earn time provisions of H.B. 95-1087.

Martin/ Cooper discharge-Completion of sentence with no further supervision, sex offender subject to Martin/Cooper Supreme Court decision.

Chgs/ Det. discharge-Completion of sentence, released to other law enforcement for pending charges or detainees.

Com. Spv. Elim discharge-Completion of sentence following reincarceration on community supervision sentence.

Probation-Released by court to probation.

Ct. Ord. Dsch.-Released by court order.

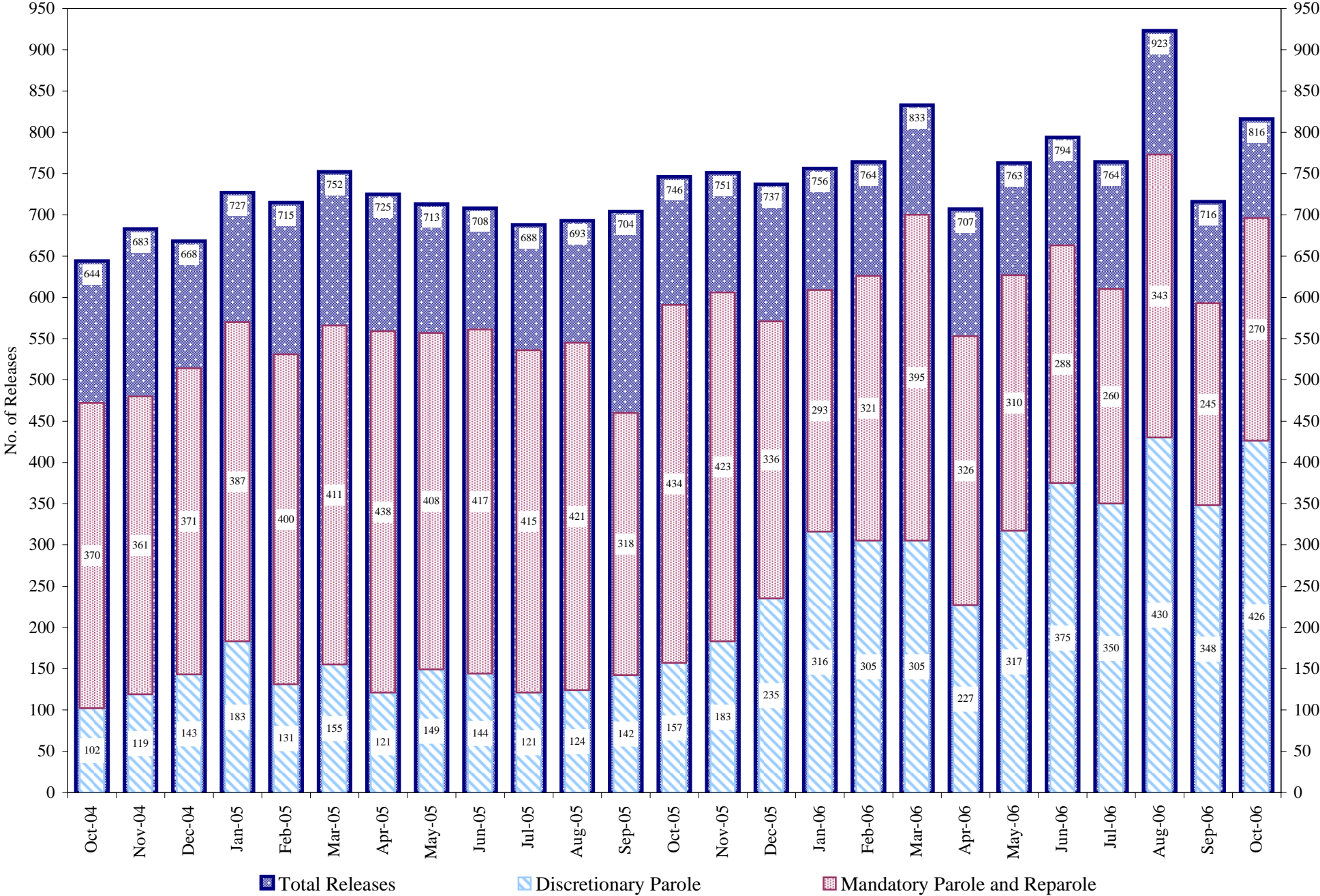
Appeal Bond-Released by court to appeal bond.

Deceased-Offender death in prison.

***Due to the decrease in community transportation services, the Department implemented a procedural change in December 2005 with regards to releasing inmates on weekends. As a result of this change, discretionary releases have increased and mandatory releases have decreased.**

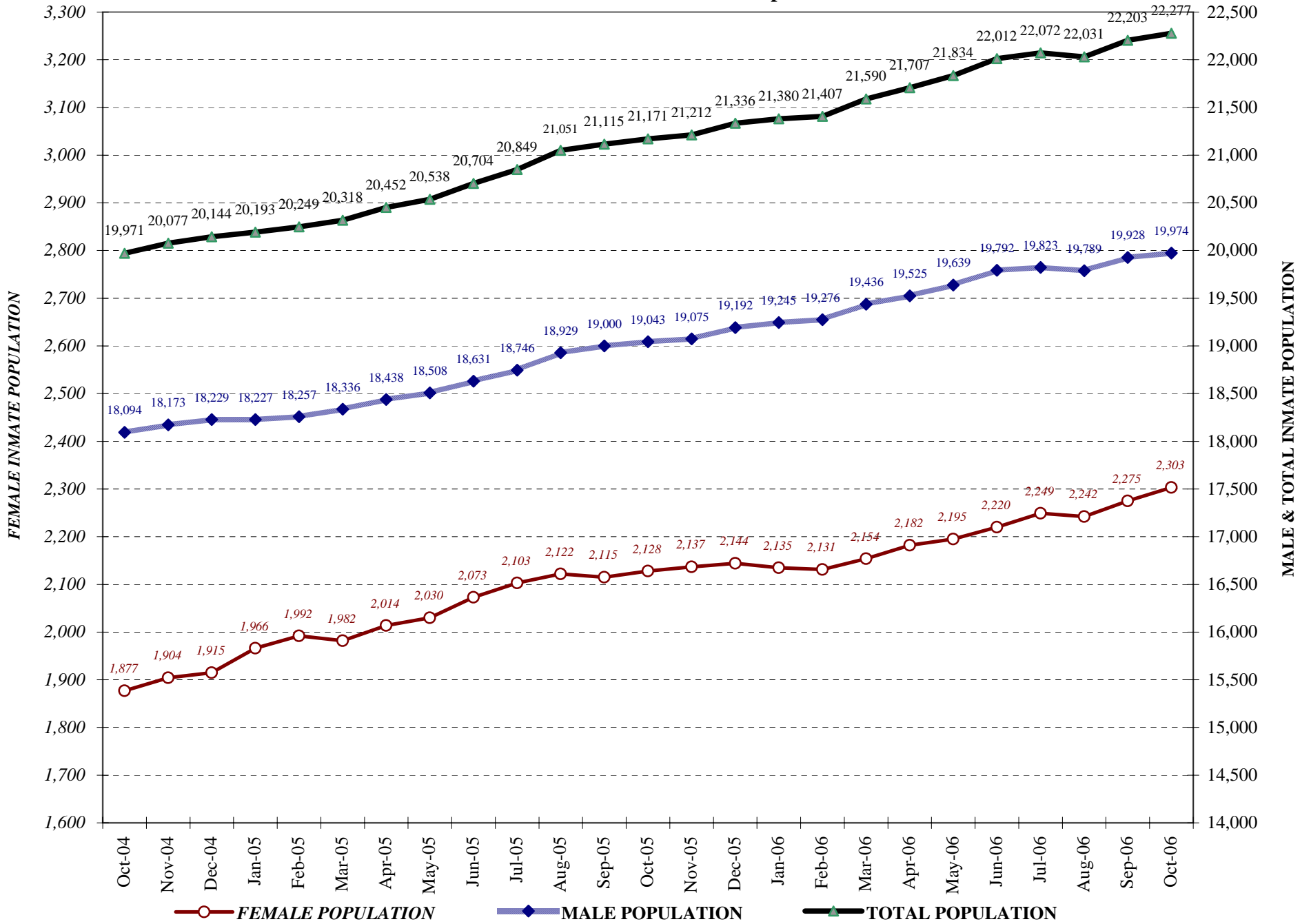
COLORADO DEPARTMENT OF CORRECTIONS

Adult Prison Releases

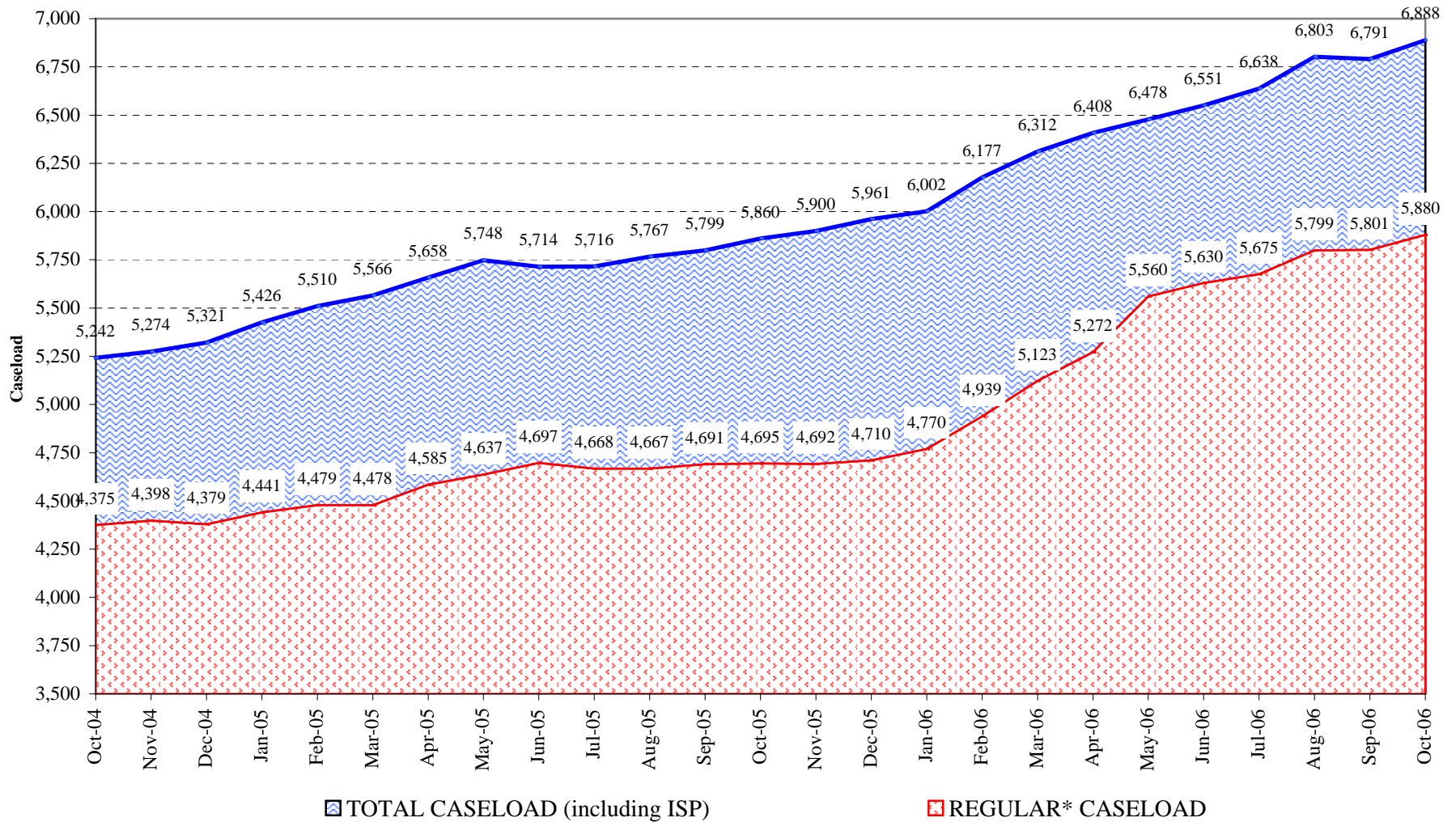


Total releases include releases to discretionary parole, mandatory parole and reparole, all types of discharges and other releases as detailed on the previous page.

COLORADO DEPARTMENT OF CORRECTIONS Adult Jurisdiction Inmate Population



COLORADO DEPARTMENT OF CORRECTIONS Parole Population



* Regular caseload includes interstate parole, but excludes out-of-state parolees and absconders.