

**COLORADO DEPARTMENT OF CORRECTIONS  
MONTHLY POPULATION AND CAPACITY REPORT  
AS OF SEPTEMBER 30, 2006**

4-Oct-06

	08/31/06	CAPACITY CHANGES	----- 09/30/06 -----		----- 09/30/05 -----	
	OPERATIONAL CAPACITY*		OPERATIONAL CAPACITY*	ON-GRDS POPULATION	OPERATIONAL CAPACITY*	ON-GRDS POPULATION
COLO STATE PENITENTIARY	756		756	753	756	739
CENTENNIAL CORR FAC	336		336	331	320	314
STERLING CORR FAC	2,445		2,445	2,404	2,445	2,366
LIMON CORR FAC	953		953	944	953	943
ARK VALLEY CORR FAC	1,007		1,007	994	1,007	1,006
BUENA VISTA CORR FAC	826		826	823	826	823
BUENA VISTA MIN CTR	292		292	288	292	287
COLO TERR CORR FAC	786		786	800	786	785
FORT LYON CORR FAC	500		500	477	500	493
FREMONT CORR FAC	1,471		1,471	1,465	1,471	1,465
LA VISTA CORR FAC	303		303	296	0	0
ARROWHEAD CORR CTR	494		494	488	494	489
FOUR MILE CORR CTR	499		499	495	499	495
PUEBLO MINIMUM CTR	0		0	0	256	252
TRINIDAD CORR FAC	484		484	475	484	484
S.T.U. at Y.O.S.	30		30	27	30	30
SKYLINE CORR CTR	249		249	249	249	249
COLORADO CORR CTR	150		150	146	150	149
DELTA CORR CTR	484		484	479	484	469
RIFLE CORR CTR	192		192	190	192	191
COLO CORR ALT PROGRAM	100		100	126	100	104
COLO WOMEN'S CORR FAC	224		224	217	224	224
DENVER WOMEN'S CORR FAC	900		900	874	900	882
DENVER REC DIAG CTR	480		480	492	480	492
SAN CARLOS CORR FAC	255		255	244	255	251
<b>***SUBTOTAL***</b>	<b>14,216</b>	<b>0</b>	<b>14,216</b>	<b>14,077</b>	<b>14,153</b>	<b>13,982</b>
<b>CONTRACTS:</b>						
BENT COUNTY CORR CTR	724		724	712	724	658
HUERFANO COUNTY CORR CTR	774		774	767	778	658
CROWLEY COUNTY CORR FAC	1,754		1,754	1,550	1,185	911
KIT CARSON COUNTY CORR FAC	824		824	801	820	783
TALLAHATCHIE MS CORR FAC	0		0	0	0	0
CHEYENNE MTN REENTRY CTR	500		500	471	500	312
BRUSH CORR FAC	270		270	269	145	162
<b>OFF-GROUNDS POPULATION:</b>						
ESCAPEES/WALKAWAYS				226		223
REVOCATIONS-JAIL				250		279
				0		0
<b>JAIL BACKLOG:</b>						
BACKLOG LESS THAN 72 HOURS			129		91	
BACKLOG GREATER THAN 72 HOURS (FISCAL YTD AVE = 417)			300		450	
BACKLOG-PAROLEES AWAITING TRANSFER			73		106	
<b>TOTAL JAIL BACKLOG</b>				<b>502</b>		<b>647</b>
<b>COUNTY JAIL CONTRACTS</b>				<b>38</b>		<b>46</b>
<b>COMMUNITY CORRECTIONS</b>						
<b>COMMUNITY</b>						
RESIDENTIAL	1,310	0	1,310	1,310	1,297	1,297
PAROLE REVOCATIONS	1	0	1	1	1	1
REVOKED-RET TO CUST	198	31	229	229	180	180
NON-RESIDENTIAL	78	-4	74	74	69	69
REGRESSIONS	60	-4	56	56	76	76
<b>TOTAL COMMUNITY</b>	<b>1,647</b>	<b>23</b>	<b>1,670</b>	<b>1,670</b>	<b>1,623</b>	<b>1,623</b>
<b>ISP</b>						
RESIDENTIAL	812	2	814	814	775	775
NON-RESIDENTIAL	47	-3	44	44	36	36
REGRESSIONS	8	4	12	12	20	20
<b>TOTAL ISP</b>	<b>867</b>	<b>3</b>	<b>870</b>	<b>870</b>	<b>831</b>	<b>831</b>
<b>TOTAL COMM. CORRECTIONS</b>	<b>2,514</b>	<b>26</b>	<b>2,540</b>	<b>2,540</b>	<b>2,454</b>	<b>2,454</b>
MALE POPULATION			<b>19,928</b>		19,000	
FEMALE POPULATION			<b>2,275</b>		2,115	
<b>**TOTAL INMATE JURISDICTIONAL POPULATION**</b>				<b>22,203</b>		<b>21,115</b>

\*OPERATIONAL CAPACITY INCLUDES ALL BEDS AVAILABLE FOR USE, INCLUDING MANAGEMENT CONTROL UNITS, BUT EXCLUDES EMERGENCY DOUBLE BUNKING

**COLORADO DEPARTMENT OF CORRECTIONS**  
**MONTHLY POPULATION AND CAPACITY REPORT**  
**AS OF SEPTEMBER 30, 2006**

14-Nov-06

**CURRENT MONTH CHANGES IN CAPACITY:**

NONE

**NET MONTHLY GROWTH RATE:**

CURRENT MONTH	172
FISCAL YEAR-TO-DATE AVERAGE	64

**YOUTHFUL OFFENDER SYSTEM**

	----- 09/30/06 -----			09/30/05
	PUEBLO	CONTRACT FACILITIES	COMM. CORR.	TOTAL POPULATION
INTAKE/IDO	17			0
RFP/REMEDICATION	2			14
PHASE I	151	0		144
PHASE II	6			11
PHASE III	0		40	38
OFF GROUNDS/BACKLOG				6
<b>**TOTAL Y.O.S. POPULATION**</b>	<b>176</b>	<b>0</b>	<b>40</b>	<b>213</b>

	CURRENT MONTH	FISCAL YR. TO DATE
YOS ADMISSIONS	5	23
YOS RELEASES:		
COMPLETION OF SENTENCE	6	14
JUDICIAL RELEASE TO PROB/CT ORD DISCHG	0	1
JUDICIAL TRANSFER TO DOC	0	0
TERMINATION/FAILURE	3	5
DECEASED	1	1
TOTAL RELEASES	10	21

**PAROLE CASELOAD**

	----- 09/30/06 -----			----- 08/31/06 -----		----- 09/30/05 -----	
	DOMESTIC	INTERST PAR/PROB	TOTAL CASELOAD	DOMESTIC	TOTAL CASELOAD	DOMESTIC	TOTAL CASELOAD
DENVER REGION							
REGULAR	2,064	106	2,170	2,075	2,183	1,742	1,846
ISP	486		486	508	508	524	524
SUBTOTAL	2,550	106	2,656	2,583	2,686	2,266	2,370
NORTHEAST REGION							
REGULAR	1,516	46	1,562	1,500	1,485	1,201	1,242
ISP	227		227	229	229	276	276
SUBTOTAL	1,743	46	1,789	1,729	1,775	1,477	1,518
SOUTHEAST REGION							
REGULAR	1,357	81	1,438	1,348	1,332	1,009	1,072
ISP	202		202	191	191	204	204
SUBTOTAL	1,559	81	1,640	1,539	1,618	1,213	1,276
WESTERN REGION							
REGULAR	592	39	631	608	630	483	531
ISP	75		75	76	76	104	104
SUBTOTAL	667	39	706	684	724	587	635
TOTAL CASELOAD							
REGULAR	5,529	272	5,801	5,531	5,799	4,435	4,691
ISP	990		990	1,004	1,004	1,108	1,108
TOTAL	6,519	272	6,791	6,535	6,803	5,543	5,799
ADDITIONAL CASELOAD:							
OUT-OF-STATE PAROLEES			1,717		1,728		1,496
PAROLEE ABSCONDERS			692		641		609

**COLORADO DEPARTMENT OF CORRECTIONS**  
**MONTHLY POPULATION AND CAPACITY REPORT**  
**AS OF SEPTEMBER 30, 2006**

4-Oct-06

	09/30/2006 POPULATION			----- FINAL CUSTODY DESIGNATION* -----					
	On-Grds.	Off-Grds.	TOTAL	Uncls.	Ad.Seg	Close	Medium	Min.-Res.	Minimum
<b>MALE POPULATION</b>									
COLO STATE PENITENTIARY	753	6	759		759				
CENTENNIAL CORR FAC	331	1	332		139	180	5	5	3
STERLING CORR FAC	2,404	24	2,428		239	721	550	537	381
LIMON CORR FAC	944	6	950		12	669	200	52	17
ARK VALLEY CORR FAC	994	17	1,011		5	474	319	141	72
BUENA VISTA CORR FAC	823	9	832		14	356	299	112	51
BUENA VISTA MIN CTR	288	1	289			1	5	202	81
COLO TERR CORR FAC	798	5	803		9	222	244	204	124
FORT LYON CORR FAC	477	8	485			27	213	173	72
FREMONT CORR FAC	1,465	5	1,470		8	174	422	564	302
ARROWHEAD CORR CTR	488	7	495					303	192
FOUR MILE CORR CTR	495	5	500				1	347	152
TRINIDAD CORR FAC	475	5	480			1	1	409	69
S.T.U. at Y.O.S.	27	0	27				7	18	2
SKYLINE CORR CTR	249	1	250					4	246
COLORADO CORR CTR	146	3	149					5	144
DELTA CORR CTR	479	2	481						481
RIFLE CORR CTR	190	1	191						191
COLO CORR ALT PROGRAM	120	13	133				7	14	112
DENVER REC DIAG CTR	491	11	502	164	14	74	74	124	52
SAN CARLOS CORR FAC	244	5	249		25	96	55	34	39
CONTRACTS:									
BENT COUNTY CORR CTR	712	8	720			2	347	203	168
HUERFANO COUNTY CORR CTR	767	14	781			13	453	188	127
CROWLEY COUNTY CORR FAC	1,550	30	1,580		7	5	927	387	254
KIT CARSON COUNTY CORR FAC	801	13	814			22	415	241	136
CHEYENNE MTN REENTRY CTR	471	2	473			2	144	195	132
COMMUNITY/ISP	1,687	100	1,787			16	54	45	1,672
<b>TOTAL MALE POPULATION</b>	<b>18,669</b>	<b>302</b>	<b>18,971</b>	<b>164</b>	<b>1,231</b>	<b>3,055</b>	<b>4,742</b>	<b>4,507</b>	<b>5,272</b>
<b>PERCENT OF TOTAL</b>				<b>0.9%</b>	<b>6.5%</b>	<b>16.1%</b>	<b>25.0%</b>	<b>23.8%</b>	<b>27.8%</b>
<b>FEMALE POPULATION</b>									
COLO WOMEN'S CORR FAC	217	4	221			69	66	43	43
DENVER WOMEN'S CORR FAC	874	7	881	17	27	136	229	279	193
LA VISTA CORR FAC	296	6	302			1	60	147	94
COLO CORR ALT PROGRAM	6	0	6						6
DENVER REC DIAG CTR INF	1	1	2			1		1	
COLO TERR CORR FAC INF.	2	0	2				2		
CONTRACTS:									
BRUSH CORR FAC	269	6	275			1	86	126	62
COMMUNITY/ISP	437	18	455			2	17	16	420
<b>TOTAL FEMALE POPULATION</b>	<b>2,102</b>	<b>42</b>	<b>2,144</b>	<b>17</b>	<b>27</b>	<b>210</b>	<b>460</b>	<b>612</b>	<b>818</b>
<b>PERCENT OF TOTAL</b>				<b>0.8%</b>	<b>1.3%</b>	<b>9.8%</b>	<b>21.5%</b>	<b>28.5%</b>	<b>38.2%</b>

\*Final custody designations for jail backlog and contracts, fugitive, community regressions, and parole revocations are not reported.

**COLORADO DEPARTMENT OF CORRECTIONS**  
ADULT INMATE JURISDICTIONAL POPULATION (1)

DATE: 10/4/2006

DATE	MALE POPULATION			FEMALE POPULATION			TOTAL POPULATION		
	Male Population	Net Change	Fiscal Y-T-D Average	Female Population	Net Change	Fiscal Y-T-D Average	Total Population	Net Change	Fiscal Y-T-D Average
09-30-06	19,928	139	<b>45</b>	2,275	33	<b>18</b>	22,203	172	<b>64</b>
08-31-06	19,789	-34		2,242	-7		22,031	-41	
07-31-06	19,823	31		2,249	29		22,072	60	
<b>06-30-06</b>	<b>19,792</b>	153		<b>2,220</b>	25		<b>22,012</b>	178	
05-31-06	19,639	114		2,195	13		21,834	127	
04-30-06	19,525	89		2,182	28		21,707	117	
03-31-06	19,436	160		2,154	23		21,590	183	
02-28-06	19,276	31		2,131	-4		21,407	27	
01-31-06	19,245	53		2,135	-9		21,380	44	
12-31-05	19,192	117	<b>97</b>	2,144	7	<b>12</b>	21,336	124	<b>109</b>
11-30-05	19,075	32		2,137	9		21,212	41	
10-31-05	19,043	43		2,128	13		21,171	56	
09-30-05	19,000	71		2,115	-7		21,115	64	
08-31-05	18,929	183		2,122	19		21,051	202	
07-31-05	18,746	115		2,103	30		20,849	145	
<b>06-30-05</b>	<b>18,631</b>	123		<b>2,073</b>	43		<b>20,704</b>	166	
05-31-05	18,508	70		2,030	16		20,538	86	
04-30-05	18,438	102		2,014	32		20,452	134	
03-31-05	18,336	79		1,982	-10		20,318	69	
02-28-05	18,257	30		1,992	26		20,249	56	
01-31-05	18,227	-2		1,966	51		20,193	49	
12-31-04	18,229	56	<b>68</b>	1,915	11	<b>27</b>	20,144	67	<b>95</b>
11-30-04	18,173	79		1,904	27		20,077	106	
10-31-04	18,094	99		1,877	24		19,971	123	
09-30-04	17,995	-18		1,853	44		19,848	26	
08-31-04	18,013	95		1,809	44		19,822	139	
07-31-04	17,918	104		1,765	10		19,683	114	
<b>06-30-04</b>	<b>17,814</b>		<b>49</b>	<b>1,755</b>		<b>11</b>	<b>19,569</b>		<b>60</b>
<b>06-30-03</b>	<b>17,226</b>		<b>57</b>	<b>1,620</b>		<b>10</b>	<b>18,846</b>		<b>67</b>
<b>06-30-02</b>	<b>16,539</b>		<b>87</b>	<b>1,506</b>		<b>14</b>	<b>18,045</b>		<b>101</b>
<b>06-30-01</b>	<b>15,493</b>		<b>63</b>	<b>1,340</b>		<b>6</b>	<b>16,833</b>		<b>70</b>
<b>06-30-00</b>	<b>14,733</b>		<b>99</b>	<b>1,266</b>		<b>7</b>	<b>15,999</b>		<b>106</b>
<b>06-30-99</b>	<b>13,547</b>		<b>75</b>	<b>1,179</b>		<b>14</b>	<b>14,726</b>		<b>89</b>
<b>06-30-98</b>	<b>12,647</b>		<b>81</b>	<b>1,016</b>		<b>9</b>	<b>13,663</b>		<b>89</b>
<b>06-30-97</b>	<b>11,681</b>			<b>909</b>			<b>12,590</b>		

(1) Adult inmate jurisdictional population includes on-grounds, off-grounds, out-of-state, escapees, and jail backlog and excludes offenders sentenced to the Youthful Offender System (Y.O.S.).

**COLORADO DEPARTMENT OF CORRECTIONS**  
**ADULT INMATE RELEASES FROM PRISON**  
**TOTAL Population (Male and Female)**

(Revised) Date: 4/10/2007

	Parole				Discharge					Other				Total
	Discretionary*	Mandatory*	Mand. Repar.*	Com. Supv.	Sentence	H.B. 1087	Martin/Cooper	Chgs/Det.	Com Spv. Elim	Probation	Ct. Ord. Dsch.	Appeal Bond	Deceased	
Sep-06	348	180	65	0	29	44	13	15	0	13	7	0	2	716
Aug-06	430	239	104	0	37	52	10	21	0	17	11	0	2	923
Jul-06	350	174	87	0	43	52	9	20	0	17	6	0	7	765
Jun-06	375	199	89	0	37	43	10	16	0	16	7	0	2	794
May-06	317	235	75	0	34	52	10	15	0	13	9	0	3	763
Apr-06	227	235	91	0	41	54	17	17	0	10	7	0	8	707
Mar-06	305	282	113	0	39	46	10	12	0	18	5	1	2	833
Feb-06	305	250	71	0	34	39	13	10	0	27	14	0	1	764
Jan-06	316	218	75	0	45	51	11	14	0	13	6	0	7	756
Dec-05	235	238	98	0	51	47	15	17	0	18	12	0	6	737
Nov-05	183	297	126	0	37	55	7	13	0	10	18	0	5	751
Oct-05	157	304	130	0	34	58	11	19	0	17	10	1	5	746
Sep-05	142	318	90	0	30	61	17	14	0	23	6	0	3	704
Aug-05	124	312	109	0	33	47	17	20	0	14	11	0	6	693
Jul-05	121	306	109	0	46	48	13	13	0	15	9	0	8	688
Jun-05	144	312	105	0	28	57	13	16	0	22	13	0	0	710
May-05	148	313	95	0	42	61	8	14	0	16	7	1	7	712
Apr-05	121	313	125	0	40	57	9	20	0	18	12	0	10	725
Mar-05	155	311	100	0	46	64	15	21	0	24	11	1	4	752
Feb-05	132	290	109	0	58	63	16	14	0	17	12	0	5	716
Jan-05	183	274	113	0	53	54	16	19	0	10	2	0	5	729
Dec-04	143	273	98	0	35	47	15	12	0	24	15	1	6	669
Nov-04	120	287	73	0	53	60	12	17	0	16	9	3	4	654
Oct-04	102	292	78	0	42	66	16	14	0	22	11	0	3	646

Definitions of Release Types

**Discretionary parole**-Released to parole through Parole Board discretion prior to mandatory release or sentence discharge date.

**Mandatory parole**-Released to parole on mandatory release date.

**Mand. Repar**-Reparoled on specific date set by Parole Board (includes S.B. 252 reparoles). n/a - breakout not available prior to June 2004.

**Com. Supv.**-Released to serve 12 months of community supervision.

**Sentence discharge**-Completion of sentence with no further supervision.

**H.B. 1087 discharge**-Completion of sentence with no further supervision, subject to earn time provisions of H.B. 95-1087.

**Martin/ Cooper discharge**-Completion of sentence with no further supervision, sex offender subject to Martin/Cooper Supreme Court decision.

**Chgs/ Det. discharge**-Completion of sentence, released to other law enforcement for pending charges or detainees.

**Com. Spv. Elim discharge**-Completion of sentence following reincarceration on community supervision sentence.

**Probation**-Released by court to probation.

**Ct. Ord. Dsch.**-Released by court order.

**Appeal Bond**-Released by court to appeal bond.

**Deceased**-Offender death in prison.

**\*Due to the decrease in community transportation services, the Department implemented a procedural change in December 2005 with regards to releasing inmates on weekends. As a result of this change, discretionary releases have increased and mandatory releases have decreased.**

# COLORADO DEPARTMENT OF CORRECTIONS

## ADULT INMATE RELEASES FROM PRISON

### Male Population Only

(Revised) Date: 4/10/2007

	Parole				Discharge					Other				Total
	Discretionary*	Mandatory*	Mand. Repar.*	Com. Supv.	Sentence	H.B. 1087	Martin/Cooper	Chgs/Det.	Com Spv. Elim	Probation	Ct. Ord. Dsch.	Appeal Bond	Deceased	
Sep-06	300	148	59	0	29	40	13	12	0	12	7	0	2	622
Aug-06	364	209	89	0	34	44	10	21	0	14	10	0	2	797
Jul-06	310	158	72	0	40	45	9	18	0	15	4	0	7	678
Jun-06	325	180	74	0	32	41	10	13	0	15	6	0	2	698
May-06	269	202	60	0	33	47	10	15	0	12	8	0	3	659
Apr-06	178	213	79	0	35	47	17	16	0	9	6	0	8	608
Mar-06	267	246	100	0	36	41	10	12	0	14	5	1	2	734
Feb-06	253	220	63	0	33	37	13	10	0	25	14	0	1	669
Jan-06	266	187	63	0	43	48	11	13	0	12	5	0	6	654
Dec-05	193	204	84	0	48	43	15	17	0	16	11	0	4	635
Nov-05	156	251	114	0	32	47	7	12	0	10	17	0	4	650
Oct-05	127	273	101	0	32	50	11	17	0	15	10	1	4	641
Sep-05	111	283	78	0	26	57	16	12	0	22	6	0	3	614
Aug-05	98	280	94	0	31	41	17	19	0	12	8	0	6	606
Jul-05	100	253	95	0	43	47	13	13	0	11	8	0	8	591
Jun-05	113	280	94	0	25	52	13	13	0	20	13	0	0	623
May-05	127	270	83	0	39	54	8	14	0	15	6	1	6	623
Apr-05	103	270	109	0	37	49	9	20	0	16	8	0	10	631
Mar-05	129	275	82	0	43	62	15	19	0	23	10	1	4	663
Feb-05	109	259	100	0	53	57	16	13	0	15	11	0	5	638
Jan-05	159	250	99	0	50	48	16	18	0	8	2	0	4	654
Dec-04	118	238	82	0	33	46	15	12	0	21	14	0	6	585
Nov-04	103	250	63	0	50	56	12	16	0	15	8	3	4	580
Oct-04	83	270	67	0	38	61	16	14	0	20	10	0	3	582

#### Definitions of Release Types

**Discretionary parole**-Released to parole through Parole Board discretion prior to mandatory release or sentence discharge date.

**Mandatory parole**-Released to parole on mandatory release date.

**Mand. Repar**-Reparoled on specific date set by Parole Board (includes S.B. 252 reparoles). n/a - breakout not available prior to June 2004.

**Com. Supv.**-Released to serve 12 months of community supervision.

**Sentence discharge**-Completion of sentence with no further supervision.

**H.B. 1087 discharge**-Completion of sentence with no further supervision, subject to earn time provisions of H.B. 95-1087.

**Martin/ Cooper discharge**-Completion of sentence with no further supervision, sex offender subject to Martin/Cooper Supreme Court decision.

**Chgs/ Det. discharge**-Completion of sentence, released to other law enforcement for pending charges or detainees.

**Com. Spv. Elim discharge**-Completion of sentence following reincarceration on community supervision sentence.

**Probation**-Released by court to probation.

**Ct. Ord. Dsch.**-Released by court order.

**Appeal Bond**-Released by court to appeal bond.

**Deceased**-Offender death in prison.

**\*Due to the decrease in community transportation services, the Department implemented a procedural change in December 2005 with regards to releasing inmates on weekends. As a result of this change, discretionary releases have increased and mandatory releases have decreased.**

**COLORADO DEPARTMENT OF CORRECTIONS**  
**ADULT INMATE RELEASES FROM PRISON**  
**Female Population Only**

Date: 10/4/2006

	Parole				Discharge					Other				Total
	Discretionary*	Mandatory*	Mand. Repar.*	Com. Supv.	Sentence	H.B. 1087	Martin/Cooper	Chgs/Det.	Com Spv. Elim	Probation	Ct. Ord. Dsch.	Appeal Bond	Deceased	
Sep-06	48	32	6	0	0	4	0	3	0	1	0	0	0	94
Aug-06	66	30	15	0	3	8	0	0	0	3	1	0	0	126
Jul-06	40	16	15	0	3	7	0	2	0	2	2	0	0	87
Jun-06	50	19	15	0	5	2	0	3	0	1	1	0	0	96
May-06	48	33	15	0	1	5	0	0	0	1	1	0	0	104
Apr-06	49	22	12	0	6	7	0	1	0	1	1	0	0	99
Mar-06	38	36	13	0	3	5	0	0	0	4	0	0	0	99
Feb-06	52	30	8	0	1	2	0	0	0	2	0	0	0	95
Jan-06	50	31	12	0	2	3	0	1	0	1	1	0	1	102
Dec-05	42	34	14	0	3	4	0	0	0	2	1	0	2	102
Nov-05	27	46	12	0	5	8	0	1	0	0	1	0	1	101
Oct-05	30	31	29	0	2	8	0	2	0	2	0	0	1	105
Sep-05	31	35	12	0	4	4	1	2	0	1	0	0	0	90
Aug-05	26	32	15	0	2	6	0	1	0	2	3	0	0	87
Jul-05	21	53	14	0	3	1	0	0	0	4	1	0	0	97
Jun-05	31	32	11	0	3	5	0	3	0	2	0	0	0	87
May-05	21	43	12	0	3	7	0	0	0	1	1	0	1	89
Apr-05	18	43	16	0	3	8	0	0	0	2	4	0	0	94
Mar-05	26	36	18	0	3	2	0	2	0	1	1	0	0	89
Feb-05	23	31	9	0	5	6	0	1	0	2	1	0	0	78
Jan-05	24	24	14	0	3	6	0	1	0	2	0	0	1	75
Dec-04	25	35	16	0	2	1	0	0	0	3	1	1	0	84
Nov-04	17	37	10	0	3	4	0	1	0	1	1	0	0	74
Oct-04	19	22	11	0	4	5	0	0	0	2	1	0	0	64

Definitions of Release Types

**Discretionary parole**-Released to parole through Parole Board discretion prior to mandatory release or sentence discharge date.

**Mandatory parole**-Released to parole on mandatory release date.

**Mand. Repar**-Reparoled on specific date set by Parole Board (includes S.B. 252 reparoles). n/a - breakout not available prior to June 2004.

**Com. Supv.**-Released to serve 12 months of community supervision.

**Sentence discharge**-Completion of sentence with no further supervision.

**H.B. 1087 discharge**-Completion of sentence with no further supervision, subject to earn time provisions of H.B. 95-1087.

**Martin/ Cooper discharge**-Completion of sentence with no further supervision, sex offender subject to Martin/Cooper Supreme Court decision.

**Chgs/ Det. discharge**-Completion of sentence, released to other law enforcement for pending charges or detainees.

**Com. Spv. Elim discharge**-Completion of sentence following reincarceration on community supervision sentence.

**Probation**-Released by court to probation.

**Ct. Ord. Dsch.**-Released by court order.

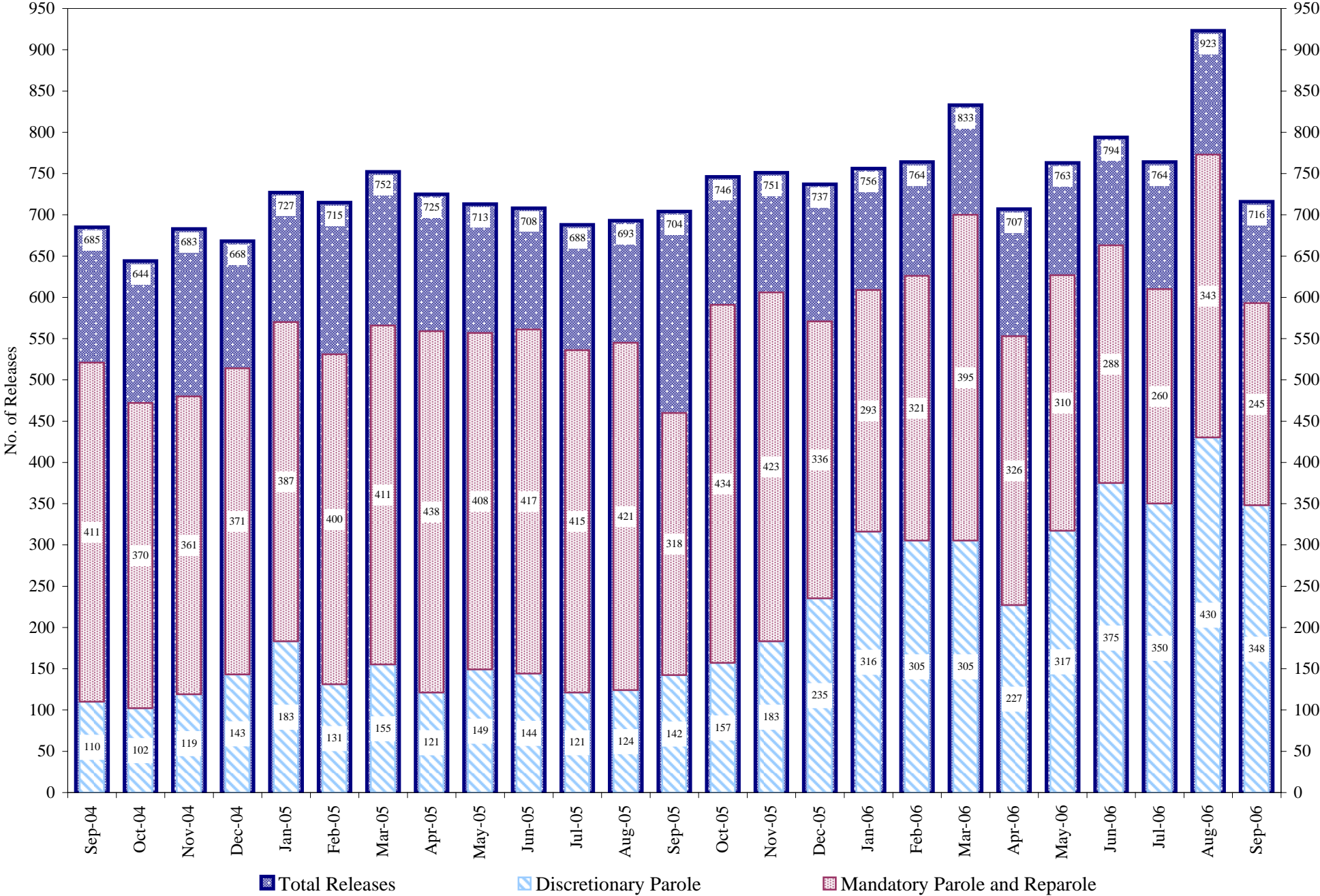
**Appeal Bond**-Released by court to appeal bond.

**Deceased**-Offender death in prison.

**\*Due to the decrease in community transportation services, the Department implemented a procedural change in December 2005 with regards to releasing inmates on weekends. As a result of this change, discretionary releases have increased and mandatory releases have decreased.**

# COLORADO DEPARTMENT OF CORRECTIONS

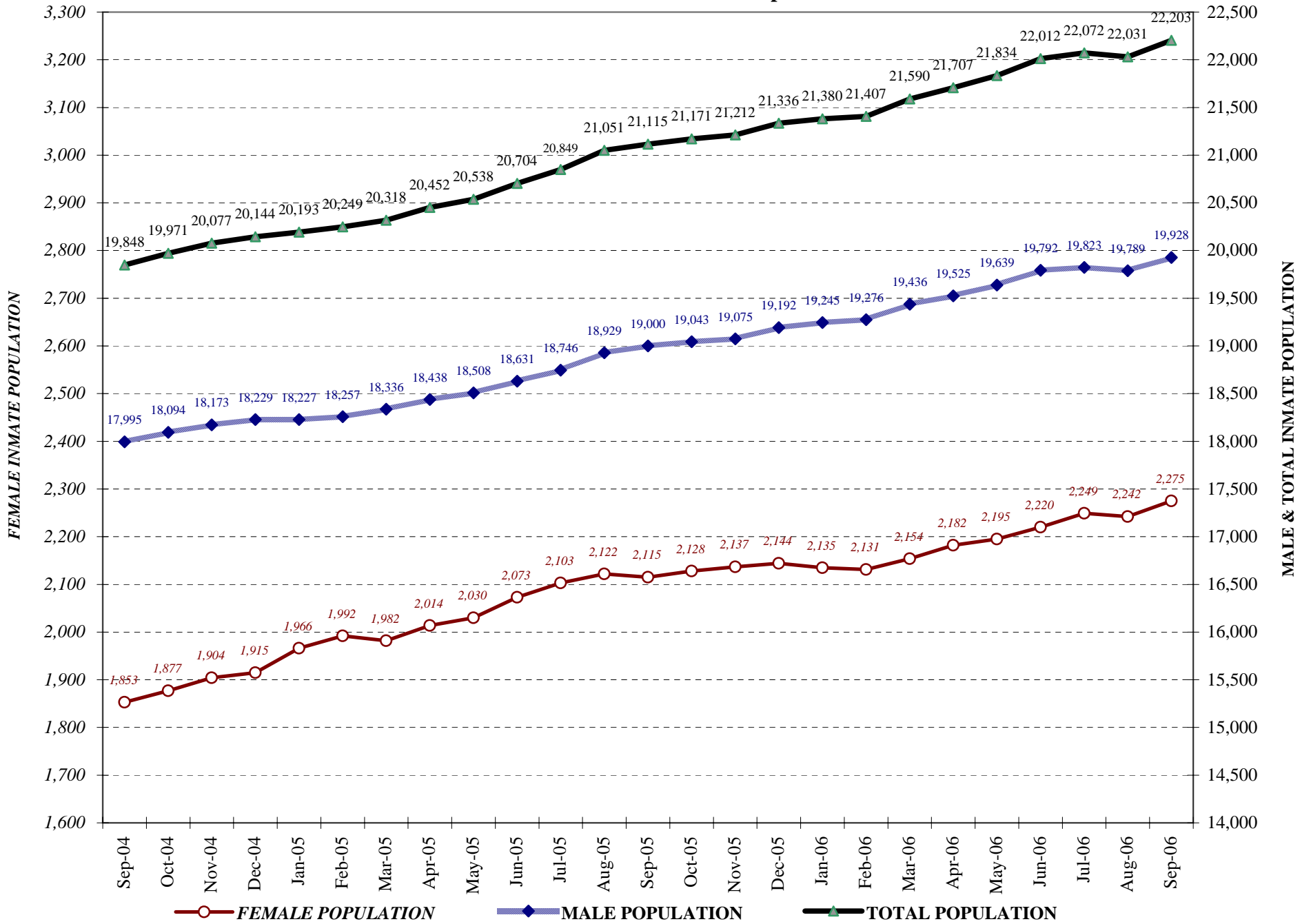
## Adult Prison Releases



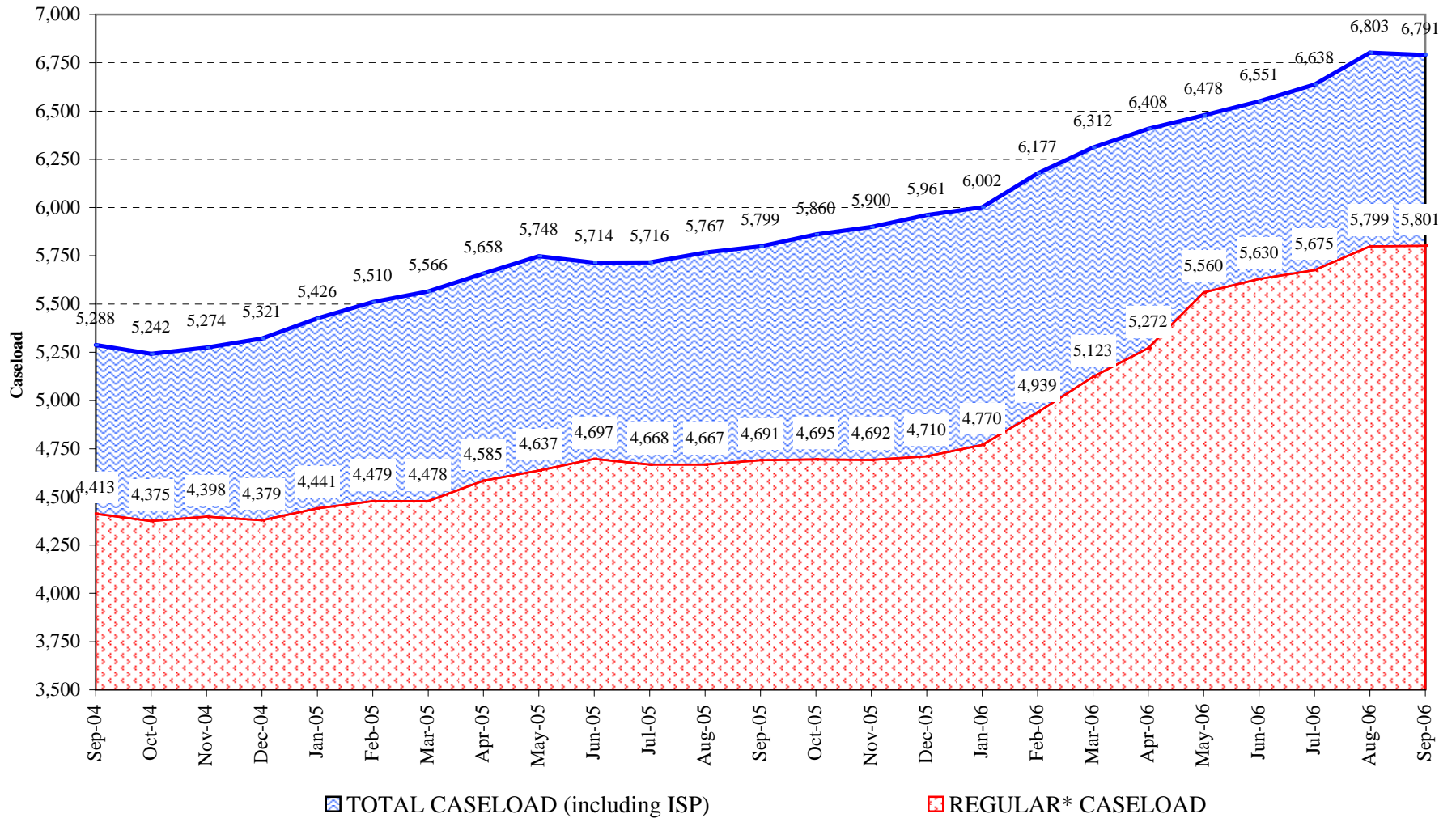
Total releases include releases to discretionary parole, mandatory parole and reparole, all types of discharges and other releases as detailed on the previous page.



## COLORADO DEPARTMENT OF CORRECTIONS Adult Jurisdiction Inmate Population



## COLORADO DEPARTMENT OF CORRECTIONS Parole Population



\* Regular caseload includes interstate parole, but excludes out-of-state parolees and absconders.