

**COLORADO DEPARTMENT OF CORRECTIONS  
MONTHLY POPULATION AND CAPACITY REPORT  
AS OF AUGUST 31, 2006**

7-Sep-06

	07/31/06	CAPACITY CHANGES	----- 08/31/06 -----		----- 08/31/05 -----	
	OPERATIONAL CAPACITY*		OPERATIONAL CAPACITY*	ON-GRDS POPULATION	OPERATIONAL CAPACITY*	ON-GRDS POPULATION
COLO STATE PENITENTIARY	756		756	744	756	746
CENTENNIAL CORR FAC	336		336	323	320	304
STERLING CORR FAC	2,445		2,445	2,415	2,445	2,413
LIMON CORR FAC	953		953	948	953	943
ARK VALLEY CORR FAC	1,007		1,007	1,003	1,007	1,004
BUENA VISTA CORR FAC	826		826	821	826	818
BUENA VISTA MIN CTR	292		292	287	292	287
COLO TERR CORR FAC	786		786	780	786	806
FORT LYON CORR FAC	500		500	472	500	496
FREMONT CORR FAC	1,471		1,471	1,463	1,471	1,462
LA VISTA CORR FAC	303		303	281	0	0
ARROWHEAD CORR CTR	494		494	488	494	493
FOUR MILE CORR CTR	499		499	494	499	496
PUEBLO MINIMUM CTR	0		0	0	256	251
TRINIDAD CORR FAC	484		484	479	484	481
S.T.U. at Y.O.S.	30		30	24	30	25
SKYLINE CORR CTR	249		249	249	249	249
COLORADO CORR CTR	150		150	150	150	146
DELTA CORR CTR	484		484	479	484	475
RIFLE CORR CTR	192		192	172	192	171
COLO CORR ALT PROGRAM	100		100	116	100	110
COLO WOMEN'S CORR FAC	224		224	221	224	223
DENVER WOMEN'S CORR FAC	900		900	896	900	878
DENVER REC DIAG CTR	480		480	478	480	485
SAN CARLOS CORR FAC	255		255	250	255	250
<b>***SUBTOTAL***</b>	<b>14,216</b>	<b>0</b>	<b>14,216</b>	<b>14,033</b>	<b>14,153</b>	<b>14,012</b>
<b>CONTRACTS:</b>						
BENT COUNTY CORR CTR	724		724	721	724	669
HUERFANO COUNTY CORR CTR	774		774	767	778	671
CROWLEY COUNTY CORR FAC	1,754		1,754	1,431	1,185	926
KIT CARSON COUNTY CORR FAC	824		824	791	820	740
TALLAHATCHIE MS CORR FAC	0		0	0	0	0
CHEYENNE MTN REENTRY CTR	500		500	500	500	163
BRUSH CORR FAC	270		270	259	145	136
<b>OFF-GROUNDS POPULATION:</b>						
ESCAPEES/WALKAWAYS				233		241
REVOCATIONS-JAIL				254		275
				1		0
<b>JAIL BACKLOG:</b>						
BACKLOG LESS THAN 72 HOURS			154		121	
BACKLOG GREATER THAN 72 HOURS (FISCAL YTD AVE = 405)			246		554	
BACKLOG-PAROLEES AWAITING TRANSFER			77		122	
<b>TOTAL JAIL BACKLOG</b>				<b>477</b>		<b>797</b>
<b>COUNTY JAIL CONTRACTS</b>				<b>50</b>		<b>56</b>
<b>COMMUNITY CORRECTIONS</b>						
<b>COMMUNITY</b>						
RESIDENTIAL	1,317	-7	1,310	1,310	1,240	1,240
PAROLE REVOCATIONS	1	0	1	1	2	2
REVOKED-RET TO CUST	210	-12	198	198	195	195
NON-RESIDENTIAL	66	12	78	78	54	54
REGRESSIONS	52	8	60	60	41	41
<b>TOTAL COMMUNITY</b>	<b>1,646</b>	<b>1</b>	<b>1,647</b>	<b>1,647</b>	<b>1,532</b>	<b>1,532</b>
<b>ISP</b>						
RESIDENTIAL	845	-33	812	812	782	782
NON-RESIDENTIAL	42	5	47	47	42	42
REGRESSIONS	10	-2	8	8	9	9
<b>TOTAL ISP</b>	<b>897</b>	<b>-30</b>	<b>867</b>	<b>867</b>	<b>833</b>	<b>833</b>
<b>TOTAL COMM. CORRECTIONS</b>	<b>2,543</b>	<b>-29</b>	<b>2,514</b>	<b>2,514</b>	<b>2,365</b>	<b>2,365</b>
MALE POPULATION			<b>19,789</b>		18,929	
FEMALE POPULATION			<b>2,242</b>		2,122	
<b>**TOTAL INMATE JURISDICTIONAL POPULATION**</b>				<b>22,031</b>		<b>21,051</b>

\*OPERATIONAL CAPACITY INCLUDES ALL BEDS AVAILABLE FOR USE, INCLUDING MANAGEMENT CONTROL UNITS, BU  
EXCLUDES EMERGENCY DOUBLE BUNKING

**COLORADO DEPARTMENT OF CORRECTIONS**  
**MONTHLY POPULATION AND CAPACITY REPORT**  
**AS OF AUGUST 31, 2006**

7-Sep-06

CURRENT MONTH CHANGES IN CAPACITY:

NONE

**NET MONTHLY GROWTH RATE:**

CURRENT MONTH

-41

FISCAL YEAR-TO-DATE AVERAGE

10

**YOUTHFUL OFFENDER SYSTEM**

	----- 08/31/06 -----			08/31/05
	PUEBLO	CONTRACT FACILITIES	COMM. CORR.	TOTAL POPULATION
INTAKE/IDO	20			8
RFP/REMEDICATION	0			21
PHASE I	156	0		138
PHASE II	8			13
PHASE III	0		42	32
OFF GROUNDS/BACKLOG				2
<b>**TOTAL Y.O.S. POPULATION**</b>	<b>184</b>	<b>0</b>	<b>42</b>	<b>214</b>

	CURRENT MONTH	FISCAL YR. TO DATE
YOS ADMISSIONS	7	18
YOS RELEASES:		
COMPLETION OF SENTENCE	2	8
JUDICIAL RELEASE TO PROB/CT ORD DISCHG	0	1
JUDICIAL TRANSFER TO DOC	0	0
TERMINATION/FAILURE	1	1
DECEASED	0	0
TOTAL RELEASES	3	10

**PAROLE CASELOAD**

	----- 08/31/06 -----			----- 07/31/06 -----		----- 08/31/05 -----	
	DOMESTIC	INTERST PAR/PROB	TOTAL CASELOAD	DOMESTIC	TOTAL CASELOAD	DOMESTIC	TOTAL CASELOAD
DENVER REGION							
REGULAR	2,075	103	2,178	2,090	2,183	1,718	1,824
ISP	508		508	450	450	516	516
SUBTOTAL	2,583	103	2,686	2,540	2,638	2,234	2,340
NORTHEAST REGION							
REGULAR	1,500	46	1,546	1,440	1,485	1,197	1,239
ISP	229		229	230	230	306	306
SUBTOTAL	1,729	46	1,775	1,670	1,715	1,503	1,545
SOUTHEAST REGION							
REGULAR	1,348	79	1,427	1,289	1,332	1,000	1,062
ISP	191		191	214	214	193	193
SUBTOTAL	1,539	79	1,618	1,503	1,582	1,193	1,255
WESTERN REGION							
REGULAR	608	40	648	593	630	491	542
ISP	76		76	69	69	85	85
SUBTOTAL	684	40	724	662	703	576	627
TOTAL CASELOAD							
REGULAR	5,531	268	5,799	5,412	5,675	4,406	4,667
ISP	1,004		1,004	963	963	1,100	1,100
TOTAL	6,535	268	6,803	6,375	6,638	5,506	5,767
ADDITIONAL CASELOAD:							
OUT-OF-STATE PAROLEES			1,728		1,683		1,488
PAROLEE ABSCONDERS			641		635		605

**COLORADO DEPARTMENT OF CORRECTIONS**  
**MONTHLY POPULATION AND CAPACITY REPORT**  
**AS OF AUGUST 31, 2006**

7-Sep-06

	08/31/2006 POPULATION			----- FINAL CUSTODY DESIGNATION* -----					
	On-Grds.	Off-Grds	TOTAL	Uncls.	Ad.Seg	Close	Medium	Min.-Res.	Minimum
<b>MALE POPULATION</b>									
COLO STATE PENITENTIARY	744	6	750			748	1	1	
CENTENNIAL CORR FAC	323	0	323			137	166	6	9
STERLING CORR FAC	2,415	23	2,438			235	741	530	558
LIMON CORR FAC	948	2	950			13	668	202	52
ARK VALLEY CORR FAC	1,003	11	1,014				469	336	139
BUENA VISTA CORR FAC	821	11	832			15	356	291	123
BUENA VISTA MIN CTR	287	4	291					4	213
COLO TERR CORR FAC	778	14	792	2	5	226	241	189	129
FORT LYON CORR FAC	472	3	475				31	212	158
FREMONT CORR FAC	1,463	7	1,470		13	183	437	534	303
ARROWHEAD CORR CTR	488	8	496					3	301
FOUR MILE CORR CTR	494	5	499					2	345
TRINIDAD CORR FAC	479	9	488					2	423
S.T.U. at Y.O.S.	24	1	25					13	12
SKYLINE CORR CTR	249	2	251						5
COLORADO CORR CTR	150	0	150						4
DELTA CORR CTR	479	5	484						
RIFLE CORR CTR	172	19	191						0
COLO CORR ALT PROGRAM	111	9	120				1	3	11
DENVER REC DIAG CTR	476	11	487	138	16	66	100	119	48
SAN CARLOS CORR FAC	250	3	253		25	96	59	35	38
CONTRACTS:									
BENT COUNTY CORR CTR	721	6	727		2	5	361	198	161
HUERFANO COUNTY CORR CTR	767	7	774		2	8	455	186	123
CROWLEY COUNTY CORR FAC	1,431	28	1,459		2	4	854	360	239
KIT CARSON COUNTY CORR FAC	791	16	807		2	15	439	232	119
CHEYENNE MTN REENTRY CTR	500	0	500			2	159	210	129
COMMUNITY/ISP	1,695	111	1,806			10	46	45	1,705
<b>TOTAL MALE POPULATION</b>	<b>18,531</b>	<b>321</b>	<b>18,852</b>	<b>140</b>	<b>1,215</b>	<b>3,048</b>	<b>4,756</b>	<b>4,461</b>	<b>5,232</b>
<b>PERCENT OF TOTAL</b>				<b>0.7%</b>	<b>6.4%</b>	<b>16.2%</b>	<b>25.2%</b>	<b>23.7%</b>	<b>27.8%</b>
<b>FEMALE POPULATION</b>									
COLO WOMEN'S CORR FAC	221	1	222			67	72	47	36
DENVER WOMEN'S CORR FAC	896	12	908	12	26	137	232	287	214
LA VISTA CORR FAC	281	4	285				49	146	90
COLO CORR ALT PROGRAM	5	0	5						5
DENVER REC DIAG CTR INF	2	0	2					2	
COLO TERR CORR FAC INF.	2	0	2					1	1
CONTRACTS:									
BRUSH CORR FAC	259	6	265			1	94	118	52
COMMUNITY/ISP	427	14	441				11	18	412
<b>TOTAL FEMALE POPULATION</b>	<b>2,093</b>	<b>37</b>	<b>2,130</b>	<b>12</b>	<b>26</b>	<b>205</b>	<b>458</b>	<b>619</b>	<b>810</b>
<b>PERCENT OF TOTAL</b>				<b>0.6%</b>	<b>1.2%</b>	<b>9.6%</b>	<b>21.5%</b>	<b>29.1%</b>	<b>38.0%</b>

\*Final custody designations for jail backlog and contracts, fugitive, community regressions, and parole revocations are not reported.

**COLORADO DEPARTMENT OF CORRECTIONS**  
ADULT INMATE JURISDICTIONAL POPULATION (1)

DATE: 9/7/2006

DATE	MALE POPULATION			FEMALE POPULATION			TOTAL POPULATION		
	Male Population	Net Change	Fiscal Y-T-D Average	Female Population	Net Change	Fiscal Y-T-D Average	Total Population	Net Change	Fiscal Y-T-D Average
08-31-06	19,789	-34	<b>-2</b>	2,242	-7	<b>11</b>	22,031	-41	<b>10</b>
07-31-06	19,823	31		2,249	29		22,072	60	
<b>06-30-06</b>	<b>19,792</b>	153		<b>2,220</b>	25		<b>22,012</b>	178	
05-31-06	19,639	114		2,195	13		21,834	127	
04-30-06	19,525	89		2,182	28		21,707	117	
03-31-06	19,436	160		2,154	23		21,590	183	
02-28-06	19,276	31		2,131	-4		21,407	27	
01-31-06	19,245	53		2,135	-9		21,380	44	
12-31-05	19,192	117	<b>97</b>	2,144	7	<b>12</b>	21,336	124	<b>109</b>
11-30-05	19,075	32		2,137	9		21,212	41	
10-31-05	19,043	43		2,128	13		21,171	56	
09-30-05	19,000	71		2,115	-7		21,115	64	
08-31-05	18,929	183		2,122	19		21,051	202	
07-31-05	18,746	115		2,103	30		20,849	145	
<b>06-30-05</b>	<b>18,631</b>	123		<b>2,073</b>	43		<b>20,704</b>	166	
05-31-05	18,508	70		2,030	16		20,538	86	
04-30-05	18,438	102		2,014	32		20,452	134	
03-31-05	18,336	79		1,982	-10		20,318	69	
02-28-05	18,257	30		1,992	26		20,249	56	
01-31-05	18,227	-2		1,966	51		20,193	49	
12-31-04	18,229	56	<b>68</b>	1,915	11	<b>27</b>	20,144	67	<b>95</b>
11-30-04	18,173	79		1,904	27		20,077	106	
10-31-04	18,094	99		1,877	24		19,971	123	
09-30-04	17,995	-18		1,853	44		19,848	26	
08-31-04	18,013	95		1,809	44		19,822	139	
07-31-04	17,918	104		1,765	10		19,683	114	
<b>06-30-04</b>	<b>17,814</b>		<b>49</b>	<b>1,755</b>		<b>11</b>	<b>19,569</b>		<b>60</b>
<b>06-30-03</b>	<b>17,226</b>		<b>57</b>	<b>1,620</b>		<b>10</b>	<b>18,846</b>		<b>67</b>
<b>06-30-02</b>	<b>16,539</b>		<b>87</b>	<b>1,506</b>		<b>14</b>	<b>18,045</b>		<b>101</b>
<b>06-30-01</b>	<b>15,493</b>		<b>63</b>	<b>1,340</b>		<b>6</b>	<b>16,833</b>		<b>70</b>
<b>06-30-00</b>	<b>14,733</b>		<b>99</b>	<b>1,266</b>		<b>7</b>	<b>15,999</b>		<b>106</b>
<b>06-30-99</b>	<b>13,547</b>		<b>75</b>	<b>1,179</b>		<b>14</b>	<b>14,726</b>		<b>89</b>
<b>06-30-98</b>	<b>12,647</b>		<b>81</b>	<b>1,016</b>		<b>9</b>	<b>13,663</b>		<b>89</b>
<b>06-30-97</b>	<b>11,681</b>			<b>909</b>			<b>12,590</b>		

(1) Adult inmate jurisdictional population includes on-grounds, off-grounds, out-of-state, escapees, and jail backlog and excludes offenders sentenced to the Youthful Offender System (Y.O.S.).

**COLORADO DEPARTMENT OF CORRECTIONS**  
**ADULT INMATE RELEASES FROM PRISON**  
**TOTAL Population (Male and Female)**

(Revised) Date: 4/10/2007

	Parole				Discharge					Other				Total
	Discretionary*	Mandatory*	Mand. Repar.*	Com. Supv.	Sentence	H.B. 1087	Martin/Cooper	Chgs/Det.	Com Spv. Elim	Probation	Ct. Ord. Dsch.	Appeal Bond	Deceased	
Aug-06	430	239	104	0	37	52	10	21	0	17	11	0	2	923
Jul-06	350	174	87	0	43	52	9	20	0	17	6	0	7	765
Jun-06	375	199	89	0	37	43	10	16	0	16	7	0	2	794
May-06	317	235	75	0	34	52	10	15	0	13	9	0	3	763
Apr-06	227	235	91	0	41	54	17	17	0	10	7	0	8	707
Mar-06	305	282	113	0	39	46	10	12	0	18	5	1	2	833
Feb-06	305	250	71	0	34	39	13	10	0	27	14	0	1	764
Jan-06	316	218	75	0	45	51	11	14	0	13	6	0	7	756
Dec-05	235	238	98	0	51	47	15	17	0	18	12	0	6	737
Nov-05	183	297	126	0	37	55	7	13	0	10	18	0	5	751
Oct-05	157	304	130	0	34	58	11	19	0	17	10	1	5	746
Sep-05	142	318	90	0	30	61	17	14	0	23	6	0	3	704
Aug-05	124	312	109	0	33	47	17	20	0	14	11	0	6	693
Jul-05	121	306	109	0	46	48	13	13	0	15	9	0	8	688
Jun-05	144	312	105	0	28	57	13	16	0	22	13	0	0	710
May-05	148	313	95	0	42	61	8	14	0	16	7	1	7	712
Apr-05	121	313	125	0	40	57	9	20	0	18	12	0	10	725
Mar-05	155	311	100	0	46	64	15	21	0	24	11	1	4	752
Feb-05	132	290	109	0	58	63	16	14	0	17	12	0	5	716
Jan-05	183	274	113	0	53	54	16	19	0	10	2	0	5	729
Dec-04	143	273	98	0	35	47	15	12	0	24	15	1	6	669
Nov-04	120	287	73	0	53	60	12	17	0	16	9	3	4	654
Oct-04	102	292	78	0	42	66	16	14	0	22	11	0	3	646
Sep-04	110	286	125	0	47	48	15	25	0	20	6	0	3	685

Definitions of Release Types

**Discretionary parole**-Released to parole through Parole Board discretion prior to mandatory release or sentence discharge date.

**Mandatory parole**-Released to parole on mandatory release date.

**Mand. Repar**-Reparoled on specific date set by Parole Board (includes S.B. 252 reparoles). n/a - breakout not available prior to June 2004.

**Com. Supv.**-Released to serve 12 months of community supervision.

**Sentence discharge**-Completion of sentence with no further supervision.

**H.B. 1087 discharge**-Completion of sentence with no further supervision, subject to earn time provisions of H.B. 95-1087.

**Martin/ Cooper discharge**-Completion of sentence with no further supervision, sex offender subject to Martin/Cooper Supreme Court decision.

**Chgs/ Det. discharge**-Completion of sentence, released to other law enforcement for pending charges or detainees.

**Com. Spv. Elim discharge**-Completion of sentence following reincarceration on community supervision sentence.

**Probation**-Released by court to probation.

**Ct. Ord. Dsch.**-Released by court order.

**Appeal Bond**-Released by court to appeal bond.

**Deceased**-Offender death in prison.

**\*Due to the decrease in community transportation services, the Department implemented a procedural change in December 2005 with regards to releasing inmates on weekends. As a result of this change, discretionary releases have increased and mandatory releases have decreased.**

# COLORADO DEPARTMENT OF CORRECTIONS

## ADULT INMATE RELEASES FROM PRISON

### Male Population Only

(Revised) Date: 4/10/2007

	Parole				Discharge					Other				Total
	Discretionary*	Mandatory*	Mand. Repar.*	Com. Supv.	Sentence	H.B. 1087	Martin/Cooper	Chgs/Det.	Com Spv. Elim	Probation	Ct. Ord. Dsch.	Appeal Bond	Deceased	
Aug-06	364	209	89	0	34	44	10	21	0	14	10	0	2	797
Jul-06	310	158	72	0	40	45	9	18	0	15	4	0	7	678
Jun-06	325	180	74	0	32	41	10	13	0	15	6	0	2	698
May-06	269	202	60	0	33	47	10	15	0	12	8	0	3	659
Apr-06	178	213	79	0	35	47	17	16	0	9	6	0	8	608
Mar-06	267	246	100	0	36	41	10	12	0	14	5	1	2	734
Feb-06	253	220	63	0	33	37	13	10	0	25	14	0	1	669
Jan-06	266	187	63	0	43	48	11	13	0	12	5	0	6	654
Dec-05	193	204	84	0	48	43	15	17	0	16	11	0	4	635
Nov-05	156	251	114	0	32	47	7	12	0	10	17	0	4	650
Oct-05	127	273	101	0	32	50	11	17	0	15	10	1	4	641
Sep-05	111	283	78	0	26	57	16	12	0	22	6	0	3	614
Aug-05	98	280	94	0	31	41	17	19	0	12	8	0	6	606
Jul-05	100	253	95	0	43	47	13	13	0	11	8	0	8	591
Jun-05	113	280	94	0	25	52	13	13	0	20	13	0	0	623
May-05	127	270	83	0	39	54	8	14	0	15	6	1	6	623
Apr-05	103	270	109	0	37	49	9	20	0	16	8	0	10	631
Mar-05	129	275	82	0	43	62	15	19	0	23	10	1	4	663
Feb-05	109	259	100	0	53	57	16	13	0	15	11	0	5	638
Jan-05	159	250	99	0	50	48	16	18	0	8	2	0	4	654
Dec-04	118	238	82	0	33	46	15	12	0	21	14	0	6	585
Nov-04	103	250	63	0	50	56	12	16	0	15	8	3	4	580
Oct-04	83	270	67	0	38	61	16	14	0	20	10	0	3	582
Sep-04	95	262	114	0	44	44	15	23	0	16	5	0	1	619

#### Definitions of Release Types

**Discretionary parole**-Released to parole through Parole Board discretion prior to mandatory release or sentence discharge date.

**Mandatory parole**-Released to parole on mandatory release date.

**Mand. Repar**-Reparoled on specific date set by Parole Board (includes S.B. 252 reparoles). n/a - breakout not available prior to June 2004.

**Com. Supv.**-Released to serve 12 months of community supervision.

**Sentence discharge**-Completion of sentence with no further supervision.

**H.B. 1087 discharge**-Completion of sentence with no further supervision, subject to earn time provisions of H.B. 95-1087.

**Martin/ Cooper discharge**-Completion of sentence with no further supervision, sex offender subject to Martin/Cooper Supreme Court decision.

**Chgs/ Det. discharge**-Completion of sentence, released to other law enforcement for pending charges or detainees.

**Com. Spv. Elim discharge**-Completion of sentence following reincarceration on community supervision sentence.

**Probation**-Released by court to probation.

**Ct. Ord. Dsch.**-Released by court order.

**Appeal Bond**-Released by court to appeal bond.

**Deceased**-Offender death in prison.

**\*Due to the decrease in community transportation services, the Department implemented a procedural change in December 2005 with regards to releasing inmates on weekends. As a result of this change, discretionary releases have increased and mandatory releases have decreased.**

**COLORADO DEPARTMENT OF CORRECTIONS**  
**ADULT INMATE RELEASES FROM PRISON**  
**Female Population Only**

Date: 9/7/2006

	Parole				Discharge					Other				Total
	Discretionary*	Mandatory*	Mand. Repar.*	Com. Supv.	Sentence	H.B. 1087	Martin/Cooper	Chgs/Det.	Com Spv. Elim	Probation	Ct. Ord. Dsch.	Appeal Bond	Deceased	
Aug-06	66	30	15	0	3	8	0	0	0	3	1	0	0	126
Jul-06	40	16	15	0	3	7	0	2	0	2	2	0	0	87
Jun-06	50	19	15	0	5	2	0	3	0	1	1	0	0	96
May-06	48	33	15	0	1	5	0	0	0	1	1	0	0	104
Apr-06	49	22	12	0	6	7	0	1	0	1	1	0	0	99
Mar-06	38	36	13	0	3	5	0	0	0	4	0	0	0	99
Feb-06	52	30	8	0	1	2	0	0	0	2	0	0	0	95
Jan-06	50	31	12	0	2	3	0	1	0	1	1	0	1	102
Dec-05	42	34	14	0	3	4	0	0	0	2	1	0	2	102
Nov-05	27	46	12	0	5	8	0	1	0	0	1	0	1	101
Oct-05	30	31	29	0	2	8	0	2	0	2	0	0	1	105
Sep-05	31	35	12	0	4	4	1	2	0	1	0	0	0	90
Aug-05	26	32	15	0	2	6	0	1	0	2	3	0	0	87
Jul-05	21	53	14	0	3	1	0	0	0	4	1	0	0	97
Jun-05	31	32	11	0	3	5	0	3	0	2	0	0	0	87
May-05	21	43	12	0	3	7	0	0	0	1	1	0	1	89
Apr-05	18	43	16	0	3	8	0	0	0	2	4	0	0	94
Mar-05	26	36	18	0	3	2	0	2	0	1	1	0	0	89
Feb-05	23	31	9	0	5	6	0	1	0	2	1	0	0	78
Jan-05	24	24	14	0	3	6	0	1	0	2	0	0	1	75
Dec-04	25	35	16	0	2	1	0	0	0	3	1	1	0	84
Nov-04	17	37	10	0	3	4	0	1	0	1	1	0	0	74
Oct-04	19	22	11	0	4	5	0	0	0	2	1	0	0	64
Sep-04	15	24	11	0	3	4	0	2	0	4	1	0	2	66

Definitions of Release Types

**Discretionary parole**-Released to parole through Parole Board discretion prior to mandatory release or sentence discharge date.

**Mandatory parole**-Released to parole on mandatory release date.

**Mand. Repar**-Reparoled on specific date set by Parole Board (includes S.B. 252 reparoles). n/a - breakout not available prior to June 2004.

**Com. Supv.**-Released to serve 12 months of community supervision.

**Sentence discharge**-Completion of sentence with no further supervision.

**H.B. 1087 discharge**-Completion of sentence with no further supervision, subject to earn time provisions of H.B. 95-1087.

**Martin/ Cooper discharge**-Completion of sentence with no further supervision, sex offender subject to Martin/Cooper Supreme Court decision.

**Chgs/ Det. discharge**-Completion of sentence, released to other law enforcement for pending charges or detainees.

**Com. Spv. Elim discharge**-Completion of sentence following reincarceration on community supervision sentence.

**Probation**-Released by court to probation.

**Ct. Ord. Dsch.**-Released by court order.

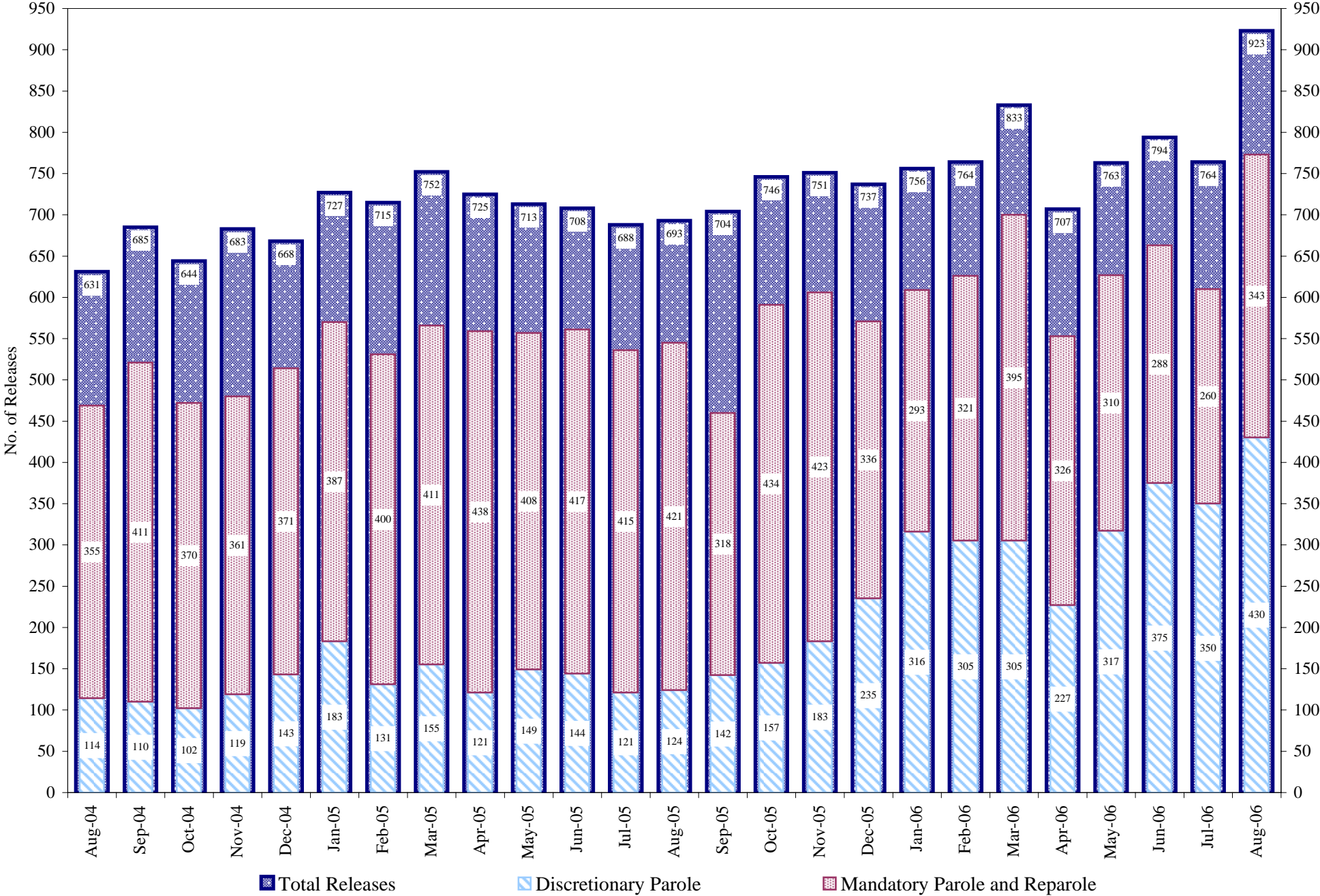
**Appeal Bond**-Released by court to appeal bond.

**Deceased**-Offender death in prison.

\*Due to the decrease in community transportation services, the Department implemented a procedural change in December 2005 with regards to releasing inmates on weekends. As a result of this change, discretionary releases have increased and mandatory releases have decreased.

# COLORADO DEPARTMENT OF CORRECTIONS

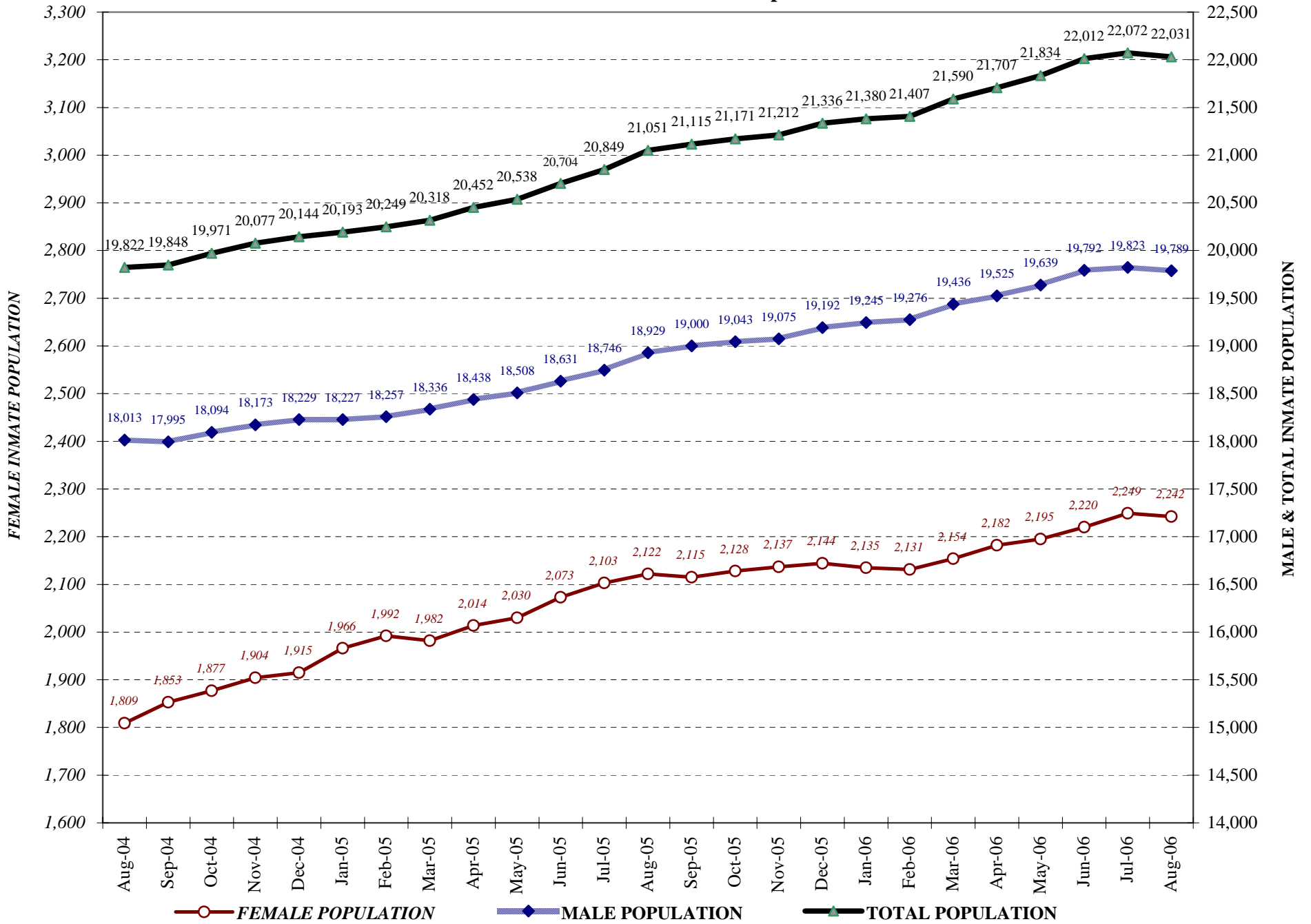
## Adult Prison Releases



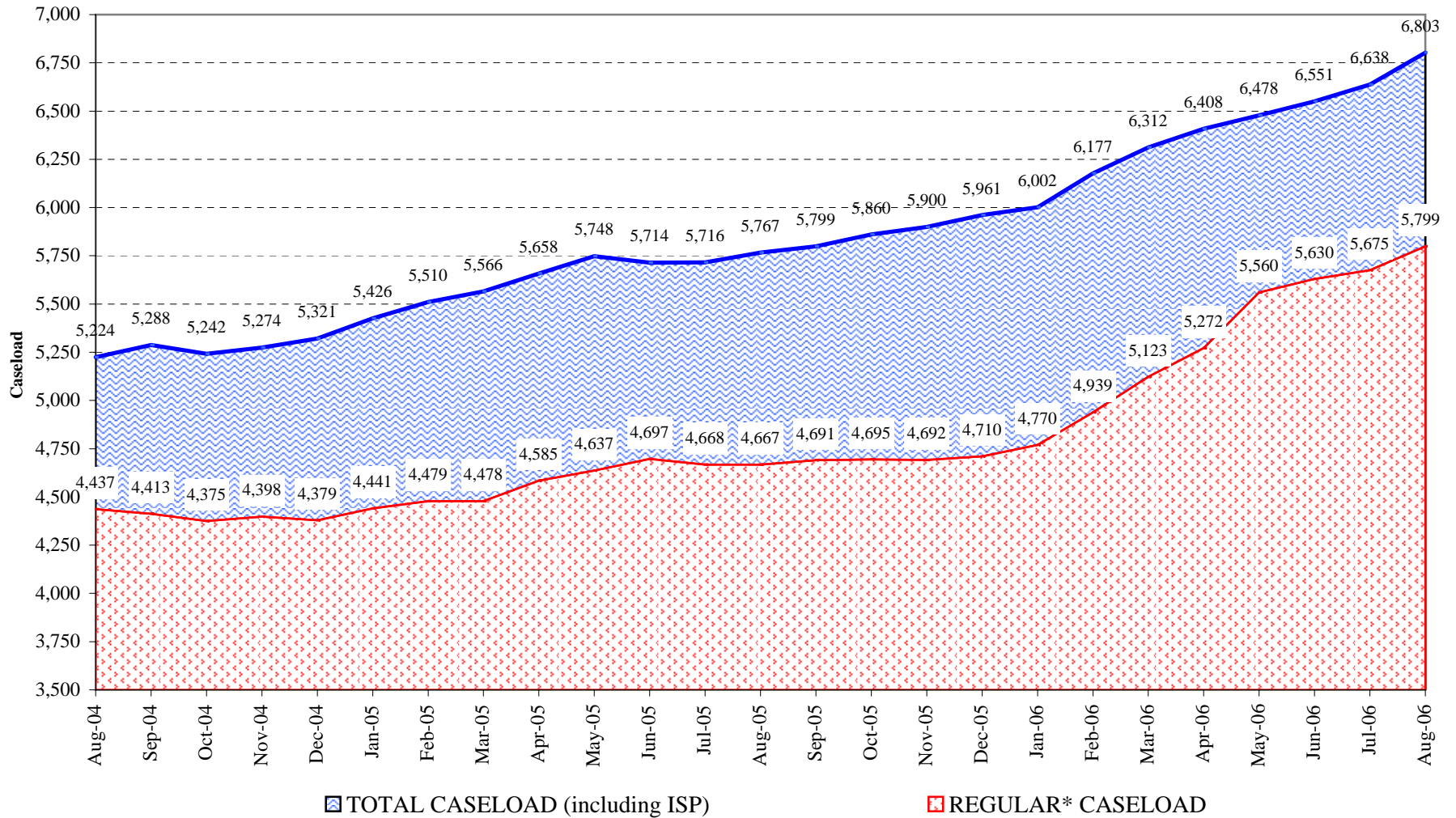
Total releases include releases to discretionary parole, mandatory parole and reparole, all types of discharges and other releases as detailed on the previous page.



## COLORADO DEPARTMENT OF CORRECTIONS Adult Jurisdiction Inmate Population



## COLORADO DEPARTMENT OF CORRECTIONS Parole Population



\* Regular caseload includes interstate parole, but excludes out-of-state parolees and absconders.