

**COLORADO DEPARTMENT OF CORRECTIONS
MONTHLY POPULATION AND CAPACITY REPORT
AS OF JULY 31, 2006**

9-Aug-06

	06/30/06	CAPACITY CHANGES	------ 07/31/06 -----		------ 07/31/05 -----	
	OPERATIONAL CAPACITY*		OPERATIONAL CAPACITY*	ON-GRDS POPULATION	OPERATIONAL CAPACITY*	ON-GRDS POPULATION
COLO STATE PENITENTIARY	756		756	747	756	753
CENTENNIAL CORR FAC	336		336	325	320	273
STERLING CORR FAC	2,445		2,445	2,410	2,445	2,407
LIMON CORR FAC	953		953	947	953	950
ARK VALLEY CORR FAC	1,007		1,007	1,000	1,007	1,001
BUENA VISTA CORR FAC	826		826	824	826	823
BUENA VISTA MIN CTR	292		292	288	292	287
COLO TERR CORR FAC	786		786	792	786	807
FORT LYON CORR FAC	500		500	486	500	496
FREMONT CORR FAC	1,471		1,471	1,468	1,471	1,452
LA VISTA CORR FAC	72	231	303	283	0	0
ARROWHEAD CORR CTR	494		494	488	494	489
FOUR MILE CORR CTR	499		499	497	499	494
PUEBLO MINIMUM CTR	184	-184	0	0	256	252
TRINIDAD CORR FAC	484		484	481	484	476
S.T.U. at Y.O.S.	30		30	28	30	30
SKYLINE CORR CTR	249		249	248	249	247
COLORADO CORR CTR	150		150	148	150	146
DELTA CORR CTR	484		484	477	484	472
RIFLE CORR CTR	192		192	188	192	187
COLO CORR ALT PROGRAM	100		100	126	100	115
COLO WOMEN'S CORR FAC	224		224	219	224	216
DENVER WOMEN'S CORR FAC	900		900	894	900	869
DENVER REC DIAG CTR	480		480	500	480	504
SAN CARLOS CORR FAC	255		255	251	255	249
SUBTOTAL	14,169	47	14,216	14,115	14,153	13,995
CONTRACTS:						
BENT COUNTY CORR CTR	724		724	721	724	694
HUERFANO COUNTY CORR CTR	774		774	769	778	729
CROWLEY COUNTY CORR FAC	1,754		1,754	1,352	1,185	998
KIT CARSON COUNTY CORR FAC	824		824	808	820	782
TALLAHATCHIE MS CORR FAC	0		0	0	0	0
CHEYENNE MTN REENTRY CTR	500		500	478	0	0
BRUSH CORR FAC	270		270	256	110	118
OFF-GROUNDS POPULATION:						
ESCAPEES/WALKAWAYS				196		214
REVOCATIONS-JAIL				268		254
				1		0
JAIL BACKLOG:						
BACKLOG LESS THAN 72 HOURS			139		142	
BACKLOG GREATER THAN 72 HOURS (FISCAL YTD AVE = 415)			281		381	
BACKLOG-PAROLEES AWAITING TRANSFER			82		105	
TOTAL JAIL BACKLOG				502		628
COUNTY JAIL CONTRACTS				63		53
COMMUNITY CORRECTIONS						
COMMUNITY						
RESIDENTIAL	1,336	-19	1,317	1,317	1,259	1,259
PAROLE REVOCATIONS	1	0	1	1	2	2
REVOKED-RET TO CUST	230	-20	210	210	200	200
NON-RESIDENTIAL	66	0	66	66	67	67
REGRESSIONS	37	15	52	52	30	30
TOTAL COMMUNITY	1,670	-24	1,646	1,646	1,558	1,558
ISP						
RESIDENTIAL	843	2	845	845	773	773
NON-RESIDENTIAL	33	9	42	42	44	44
REGRESSIONS	12	-2	10	10	9	9
TOTAL ISP	888	9	897	897	826	826
TOTAL COMM. CORRECTIONS	2,558	-15	2,543	2,543	2,384	2,384
MALE POPULATION			19,823		18,746	
FEMALE POPULATION			2,249		2,103	
TOTAL INMATE JURISDICTIONAL POPULATION				22,072		20,849

*OPERATIONAL CAPACITY INCLUDES ALL BEDS AVAILABLE FOR USE, INCLUDING MANAGEMENT CONTROL UNITS, BUT EXCLUDES EMERGENCY DOUBLE BUNKING

COLORADO DEPARTMENT OF CORRECTIONS
MONTHLY POPULATION AND CAPACITY REPORT
AS OF JULY 31, 2006

Revised: 05/07/07

CURRENT MONTH CHANGES IN CAPACITY:

Jul-06	LA VISTA CORR FAC	FACILITY TRANSITION	231
Jul-06	PUEBLO MINIMUM CTR	FACILITY TRANSITION	-184

NET MONTHLY GROWTH RATE:

CURRENT MONTH	60
FISCAL YEAR-TO-DATE AVERAGE	60

YOUTHFUL OFFENDER SYSTEM

	----- 07/31/06 -----				07/31/05
	PUEBLO	CONTRACT FACILITIES	COMM. CORR.	TOTAL POPULATION	TOTAL POPULATION
INTAKE/IDO	19			19	5
RFP/REMEDICATION	2			2	13
PHASE I	154	0		154	144
PHASE II	-- *			-- *	14
PHASE III	0		41	41	37
OFF GROUNDS/BACKLOG				8	4
TOTAL Y.O.S. POPULATION	175	0	41	224	217

*Phase II breakout not available this month only (reported in Phase I).

	CURRENT MONTH	FISCAL YR. TO DATE
YOS ADMISSIONS	11	11
YOS RELEASES:		
COMPLETION OF SENTENCE	4	4
JUDICIAL RELEASE TO PROB/CT ORD DISCHG	1	1
JUDICIAL TRANSFER TO DOC	0	0
TERMINATION/FAILURE	1	1
DECEASED	0	0
TOTAL RELEASES	6	6

PAROLE CASELOAD

	----- 07/31/06 -----			----- 06/30/06 -----		----- 07/31/05 -----	
	DOMESTIC	INTERST PAR/PROB	TOTAL CASELOAD	DOMESTIC	TOTAL CASELOAD	DOMESTIC	TOTAL CASELOAD
DENVER REGION							
REGULAR	2,090	98	2,188	2,081	2,183	1,718	1,822
ISP	450		450	431	431	488	488
SUBTOTAL	2,540	98	2,638	2,512	2,614	2,206	2,310
NORTHEAST REGION							
REGULAR	1,440	45	1,485	1,438	1,485	1,206	1,248
ISP	230		230	232	232	283	283
SUBTOTAL	1,670	45	1,715	1,670	1,717	1,489	1,531
SOUTHEAST REGION							
REGULAR	1,289	79	1,368	1,256	1,332	998	1,062
ISP	214		214	196	196	210	210
SUBTOTAL	1,503	79	1,582	1,452	1,528	1,208	1,272
WESTERN REGION							
REGULAR	593	41	634	590	630	485	536
ISP	69		69	62	62	67	67
SUBTOTAL	662	41	703	652	692	552	603
TOTAL CASELOAD							
REGULAR	5,412	263	5,675	5,365	5,630	4,407	4,668
ISP	963		963	921	921	1,048	1,048
TOTAL	6,375	263	6,638	6,286	6,551	5,455	5,716
ADDITIONAL CASELOAD:							
OUT-OF-STATE PAROLEES			1,683		1,669		1,510
PAROLEE ABSCONDERS			635		622		596

COLORADO DEPARTMENT OF CORRECTIONS
MONTHLY POPULATION AND CAPACITY REPORT
AS OF JULY 31, 2006

9-Aug-06

	07/31/2006 POPULATION			----- FINAL CUSTODY DESIGNATION* -----					
	On-Grds.	Off-Grds.	TOTAL	Uncls.	Ad.Seg	Close	Medium	Min.-Res.	Minimum
MALE POPULATION									
COLO STATE PENITENTIARY	747	3	750			748	2		
CENTENNIAL CORR FAC	325	1	326			136	172	5	7
STERLING CORR FAC	2,410	17	2,427			232	740	534	548
LIMON CORR FAC	947	6	953			13	675	189	61
ARK VALLEY CORR FAC	1,000	14	1,014			5	456	336	143
BUENA VISTA CORR FAC	824	11	835			16	347	280	137
BUENA VISTA MIN CTR	288	1	289						210
COLO TERR CORR FAC	792	6	798			1	239	233	200
FORT LYON CORR FAC	486	4	490				34	225	160
FREMONT CORR FAC	1,468	6	1,474			19	192	428	539
ARROWHEAD CORR CTR	488	8	496					1	307
FOUR MILE CORR CTR	497	3	500						355
TRINIDAD CORR FAC	481	9	490					2	411
S.T.U. at Y.O.S.	28	0	28					15	13
SKYLINE CORR CTR	248	1	249						1
COLORADO CORR CTR	148	0	148						2
DELTA CORR CTR	477	2	479				1	1	4
RIFLE CORR CTR	188	3	191						0
COLO CORR ALT PROGRAM	118	7	125					3	12
DENVER REC DIAG CTR	497	14	511	114	9	92	120	137	39
SAN CARLOS CORR FAC	251	2	253		25	87	57	45	39
CONTRACTS:									
BENT COUNTY CORR CTR	721	6	727		2	11	359	207	148
HUERFANO COUNTY CORR CTR	769	11	780		2	13	460	178	127
CROWLEY COUNTY CORR FAC	1,352	30	1,382		9	7	811	335	220
KIT CARSON COUNTY CORR FAC	808	9	817		1	16	451	222	127
CHEYENNE MTN REENTRY CTR	478	0	478			2	150	195	131
COMMUNITY/ISP	1,721	98	1,819			7	33	50	1,729
TOTAL MALE POPULATION	18,557	272	18,829	114	1,218	3,093	4,693	4,479	5,232
PERCENT OF TOTAL				0.6%	6.5%	16.4%	24.9%	23.8%	27.8%
FEMALE POPULATION									
COLO WOMEN'S CORR FAC	219	2	221			63	82	41	35
DENVER WOMEN'S CORR FAC	894	7	901	21	26	139	218	279	218
LA VISTA CORR FAC	283	8	291			1	38	158	94
COLO CORR ALT PROGRAM	8	0	8				1	2	5
DENVER REC DIAG CTR INF	3	1	4			1	2		1
COLO TERR CORR FAC INF.	0	0	0						
CONTRACTS:									
BRUSH CORR FAC	256	4	260			3	93	113	51
COMMUNITY/ISP	441	10	451			3	8	15	425
TOTAL FEMALE POPULATION	2,104	32	2,136	21	26	210	442	608	829
PERCENT OF TOTAL				1.0%	1.2%	9.8%	20.7%	28.5%	38.8%

*Final custody designations for jail backlog and contracts, fugitive, community regressions, and parole revocations are not reported.

COLORADO DEPARTMENT OF CORRECTIONS
ADULT INMATE JURISDICTIONAL POPULATION (1)

DATE: 8/9/2006

DATE	MALE POPULATION			FEMALE POPULATION			TOTAL POPULATION		
	Male Population	Net Change	Fiscal Y-T-D Average	Female Population	Net Change	Fiscal Y-T-D Average	Total Population	Net Change	Fiscal Y-T-D Average
07-31-06	19,823	31	31	2,249	29	29	22,072	60	60
06-30-06	19,792	153		2,220	25		22,012	178	
05-31-06	19,639	114		2,195	13		21,834	127	
04-30-06	19,525	89		2,182	28		21,707	117	
03-31-06	19,436	160		2,154	23		21,590	183	
02-28-06	19,276	31		2,131	-4		21,407	27	
01-31-06	19,245	53		2,135	-9		21,380	44	
12-31-05	19,192	117	97	2,144	7	12	21,336	124	109
11-30-05	19,075	32		2,137	9		21,212	41	
10-31-05	19,043	43		2,128	13		21,171	56	
09-30-05	19,000	71		2,115	-7		21,115	64	
08-31-05	18,929	183		2,122	19		21,051	202	
07-31-05	18,746	115		2,103	30		20,849	145	
06-30-05	18,631	123		2,073	43		20,704	166	
05-31-05	18,508	70		2,030	16		20,538	86	
04-30-05	18,438	102		2,014	32		20,452	134	
03-31-05	18,336	79		1,982	-10		20,318	69	
02-28-05	18,257	30		1,992	26		20,249	56	
01-31-05	18,227	-2		1,966	51		20,193	49	
12-31-04	18,229	56	68	1,915	11	27	20,144	67	95
11-30-04	18,173	79		1,904	27		20,077	106	
10-31-04	18,094	99		1,877	24		19,971	123	
09-30-04	17,995	-18		1,853	44		19,848	26	
08-31-04	18,013	95		1,809	44		19,822	139	
07-31-04	17,918	104		1,765	10		19,683	114	
06-30-04	17,814		49	1,755		11	19,569		60
06-30-03	17,226		57	1,620		10	18,846		67
06-30-02	16,539		87	1,506		14	18,045		101
06-30-01	15,493		63	1,340		6	16,833		70
06-30-00	14,733		99	1,266		7	15,999		106
06-30-99	13,547		75	1,179		14	14,726		89
06-30-98	12,647		81	1,016		9	13,663		89
06-30-97	11,681			909			12,590		

(1) Adult inmate jurisdictional population includes on-grounds, off-grounds, out-of-state, escapees, and jail backlog and excludes offenders sentenced to the Youthful Offender System (Y.O.S.).

COLORADO DEPARTMENT OF CORRECTIONS
ADULT INMATE RELEASES FROM PRISON
TOTAL Population (Male and Female)

(Revised) Date: 4/10/2007

	Parole				Discharge					Other				Total
	Discretionary*	Mandatory*	Mand. Repar.*	Com. Supv.	Sentence	H.B. 1087	Martin/Cooper	Chgs/Det.	Com Spv. Elim	Probation	Ct. Ord. Dsch.	Appeal Bond	Deceased	
Jul-06	350	174	87	0	43	52	9	20	0	17	6	0	7	765
Jun-06	375	199	89	0	37	43	10	16	0	16	7	0	2	794
May-06	317	235	75	0	34	52	10	15	0	13	9	0	3	763
Apr-06	227	235	91	0	41	54	17	17	0	10	7	0	8	707
Mar-06	305	282	113	0	39	46	10	12	0	18	5	1	2	833
Feb-06	305	250	71	0	34	39	13	10	0	27	14	0	1	764
Jan-06	316	218	75	0	45	51	11	14	0	13	6	0	7	756
Dec-05	235	238	98	0	51	47	15	17	0	18	12	0	6	737
Nov-05	183	297	126	0	37	55	7	13	0	10	18	0	5	751
Oct-05	157	304	130	0	34	58	11	19	0	17	10	1	5	746
Sep-05	142	318	90	0	30	61	17	14	0	23	6	0	3	704
Aug-05	124	312	109	0	33	47	17	20	0	14	11	0	6	693
Jul-05	121	306	109	0	46	48	13	13	0	15	9	0	8	688
Jun-05	144	312	105	0	28	57	13	16	0	22	13	0	0	710
May-05	148	313	95	0	42	61	8	14	0	16	7	1	7	712
Apr-05	121	313	125	0	40	57	9	20	0	18	12	0	10	725
Mar-05	155	311	100	0	46	64	15	21	0	24	11	1	4	752
Feb-05	132	290	109	0	58	63	16	14	0	17	12	0	5	716
Jan-05	183	274	113	0	53	54	16	19	0	10	2	0	5	729
Dec-04	143	273	98	0	35	47	15	12	0	24	15	1	6	669
Nov-04	120	287	73	0	53	60	12	17	0	16	9	3	4	654
Oct-04	102	292	78	0	42	66	16	14	0	22	11	0	3	646
Sep-04	110	286	125	0	47	48	15	25	0	20	6	0	3	685
Aug-04	115	266	88	0	52	54	15	17	0	13	7	0	4	631

Definitions of Release Types

Discretionary parole-Released to parole through Parole Board discretion prior to mandatory release or sentence discharge date.

Mandatory parole-Released to parole on mandatory release date.

Mand. Repar-Reparoled on specific date set by Parole Board (includes S.B. 252 reparoles). n/a - breakout not available prior to June 2004.

Com. Supv.-Released to serve 12 months of community supervision.

Sentence discharge-Completion of sentence with no further supervision.

H.B. 1087 discharge-Completion of sentence with no further supervision, subject to earn time provisions of H.B. 95-1087.

Martin/ Cooper discharge-Completion of sentence with no further supervision, sex offender subject to Martin/Cooper Supreme Court decision.

Chgs/ Det. discharge-Completion of sentence, released to other law enforcement for pending charges or detainees.

Com. Spv. Elim discharge-Completion of sentence following reincarceration on community supervision sentence.

Probation-Released by court to probation.

Ct. Ord. Dsch.-Released by court order.

Appeal Bond-Released by court to appeal bond.

Deceased-Offender death in prison.

***Due to the decrease in community transportation services, the Department implemented a procedural change in December 2005 with regards to releasing inmates on weekends. As a result of this change, discretionary releases have increased and mandatory releases have decreased.**

COLORADO DEPARTMENT OF CORRECTIONS
ADULT INMATE RELEASES FROM PRISON
Male Population Only

(Revised) Date: 4/10/2007

	Parole				Discharge					Other				Total
	Discretionary*	Mandatory*	Mand. Repar.*	Com. Supv.	Sentence	H.B. 1087	Martin/Cooper	Chgs/Det.	Com Spv. Elim	Probation	Ct. Ord. Dsch.	Appeal Bond	Deceased	
Jul-06	310	158	72	0	40	45	9	18	0	15	4	0	7	678
Jun-06	325	180	74	0	32	41	10	13	0	15	6	0	2	698
May-06	269	202	60	0	33	47	10	15	0	12	8	0	3	659
Apr-06	178	213	79	0	35	47	17	16	0	9	6	0	8	608
Mar-06	267	246	100	0	36	41	10	12	0	14	5	1	2	734
Feb-06	253	220	63	0	33	37	13	10	0	25	14	0	1	669
Jan-06	266	187	63	0	43	48	11	13	0	12	5	0	6	654
Dec-05	193	204	84	0	48	43	15	17	0	16	11	0	4	635
Nov-05	156	251	114	0	32	47	7	12	0	10	17	0	4	650
Oct-05	127	273	101	0	32	50	11	17	0	15	10	1	4	641
Sep-05	111	283	78	0	26	57	16	12	0	22	6	0	3	614
Aug-05	98	280	94	0	31	41	17	19	0	12	8	0	6	606
Jul-05	100	253	95	0	43	47	13	13	0	11	8	0	8	591
Jun-05	113	280	94	0	25	52	13	13	0	20	13	0	0	623
May-05	127	270	83	0	39	54	8	14	0	15	6	1	6	623
Apr-05	103	270	109	0	37	49	9	20	0	16	8	0	10	631
Mar-05	129	275	82	0	43	62	15	19	0	23	10	1	4	663
Feb-05	109	259	100	0	53	57	16	13	0	15	11	0	5	638
Jan-05	159	250	99	0	50	48	16	18	0	8	2	0	4	654
Dec-04	118	238	82	0	33	46	15	12	0	21	14	0	6	585
Nov-04	103	250	63	0	50	56	12	16	0	15	8	3	4	580
Oct-04	83	270	67	0	38	61	16	14	0	20	10	0	3	582
Sep-04	95	262	114	0	44	44	15	23	0	16	5	0	1	619
Aug-04	97	238	76	0	49	50	15	17	0	11	5	0	4	562

Definitions of Release Types

Discretionary parole-Released to parole through Parole Board discretion prior to mandatory release or sentence discharge date.

Mandatory parole-Released to parole on mandatory release date.

Mand. Repar-Reparoled on specific date set by Parole Board (includes S.B. 252 reparoles). n/a - breakout not available prior to June 2004.

Com. Supv.-Released to serve 12 months of community supervision.

Sentence discharge-Completion of sentence with no further supervision.

H.B. 1087 discharge-Completion of sentence with no further supervision, subject to earn time provisions of H.B. 95-1087.

Martin/ Cooper discharge-Completion of sentence with no further supervision, sex offender subject to Martin/Cooper Supreme Court decision.

Chgs/ Det. discharge-Completion of sentence, released to other law enforcement for pending charges or detainees.

Com. Spv. Elim discharge-Completion of sentence following reincarceration on community supervision sentence.

Probation-Released by court to probation.

Ct. Ord. Dsch.-Released by court order.

Appeal Bond-Released by court to appeal bond.

Deceased-Offender death in prison.

***Due to the decrease in community transportation services, the Department implemented a procedural change in December 2005 with regards to releasing inmates on weekends. As a result of this change, discretionary releases have increased and mandatory releases have decreased.**

COLORADO DEPARTMENT OF CORRECTIONS
ADULT INMATE RELEASES FROM PRISON
Female Population Only

Date: 8/9/2006

	Parole				Discharge					Other				Total
	Discretionary*	Mandatory*	Mand. Repar.*	Com. Supv.	Sentence	H.B. 1087	Martin/Cooper	Chgs/Det.	Com Spv. Elim	Probation	Ct. Ord. Dsch.	Appeal Bond	Deceased	
Jul-06	40	16	15	0	3	7	0	2	0	2	2	0	0	87
Jun-06	50	19	15	0	5	2	0	3	0	1	1	0	0	96
May-06	48	33	15	0	1	5	0	0	0	1	1	0	0	104
Apr-06	49	22	12	0	6	7	0	1	0	1	1	0	0	99
Mar-06	38	36	13	0	3	5	0	0	0	4	0	0	0	99
Feb-06	52	30	8	0	1	2	0	0	0	2	0	0	0	95
Jan-06	50	31	12	0	2	3	0	1	0	1	1	0	1	102
Dec-05	42	34	14	0	3	4	0	0	0	2	1	0	2	102
Nov-05	27	46	12	0	5	8	0	1	0	0	1	0	1	101
Oct-05	30	31	29	0	2	8	0	2	0	2	0	0	1	105
Sep-05	31	35	12	0	4	4	1	2	0	1	0	0	0	90
Aug-05	26	32	15	0	2	6	0	1	0	2	3	0	0	87
Jul-05	21	53	14	0	3	1	0	0	0	4	1	0	0	97
Jun-05	31	32	11	0	3	5	0	3	0	2	0	0	0	87
May-05	21	43	12	0	3	7	0	0	0	1	1	0	1	89
Apr-05	18	43	16	0	3	8	0	0	0	2	4	0	0	94
Mar-05	26	36	18	0	3	2	0	2	0	1	1	0	0	89
Feb-05	23	31	9	0	5	6	0	1	0	2	1	0	0	78
Jan-05	24	24	14	0	3	6	0	1	0	2	0	0	1	75
Dec-04	25	35	16	0	2	1	0	0	0	3	1	1	0	84
Nov-04	17	37	10	0	3	4	0	1	0	1	1	0	0	74
Oct-04	19	22	11	0	4	5	0	0	0	2	1	0	0	64
Sep-04	15	24	11	0	3	4	0	2	0	4	1	0	2	66
Aug-04	18	28	12	0	3	4	0	0	0	2	2	0	0	69

Definitions of Release Types

Discretionary parole-Released to parole through Parole Board discretion prior to mandatory release or sentence discharge date.

Mandatory parole-Released to parole on mandatory release date.

Mand. Repar-Reparoled on specific date set by Parole Board (includes S.B. 252 reparoles). n/a - breakout not available prior to June 2004.

Com. Supv.-Released to serve 12 months of community supervision.

Sentence discharge-Completion of sentence with no further supervision.

H.B. 1087 discharge-Completion of sentence with no further supervision, subject to earn time provisions of H.B. 95-1087.

Martin/ Cooper discharge-Completion of sentence with no further supervision, sex offender subject to Martin/Cooper Supreme Court decision.

Chgs/ Det. discharge-Completion of sentence, released to other law enforcement for pending charges or detainees.

Com. Spv. Elim discharge-Completion of sentence following reincarceration on community supervision sentence.

Probation-Released by court to probation.

Ct. Ord. Dsch.-Released by court order.

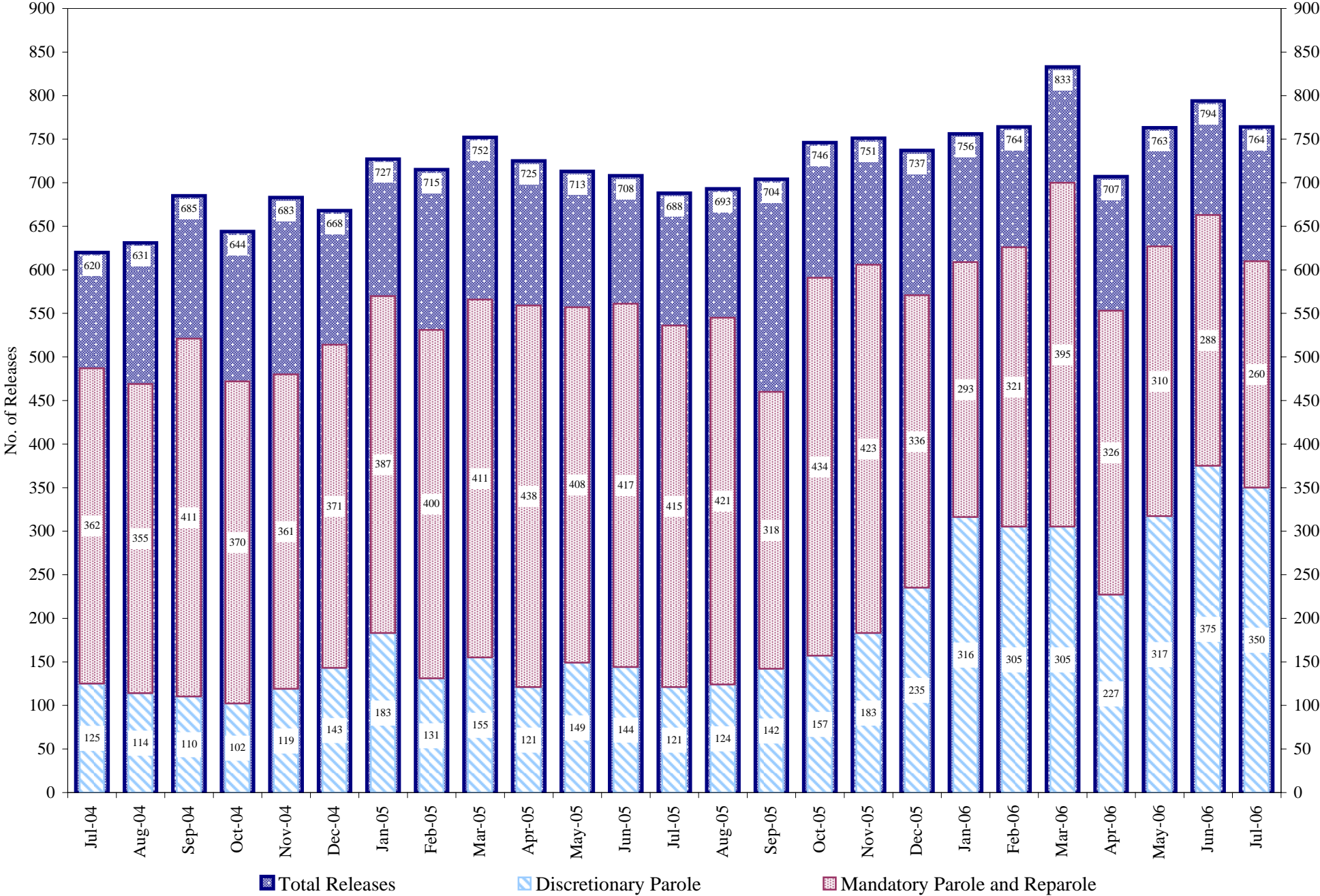
Appeal Bond-Released by court to appeal bond.

Deceased-Offender death in prison.

***Due to the decrease in community transportation services, the Department implemented a procedural change in December 2005 with regards to releasing inmates on weekends. As a result of this change, discretionary releases have increased and mandatory releases have decreased.**

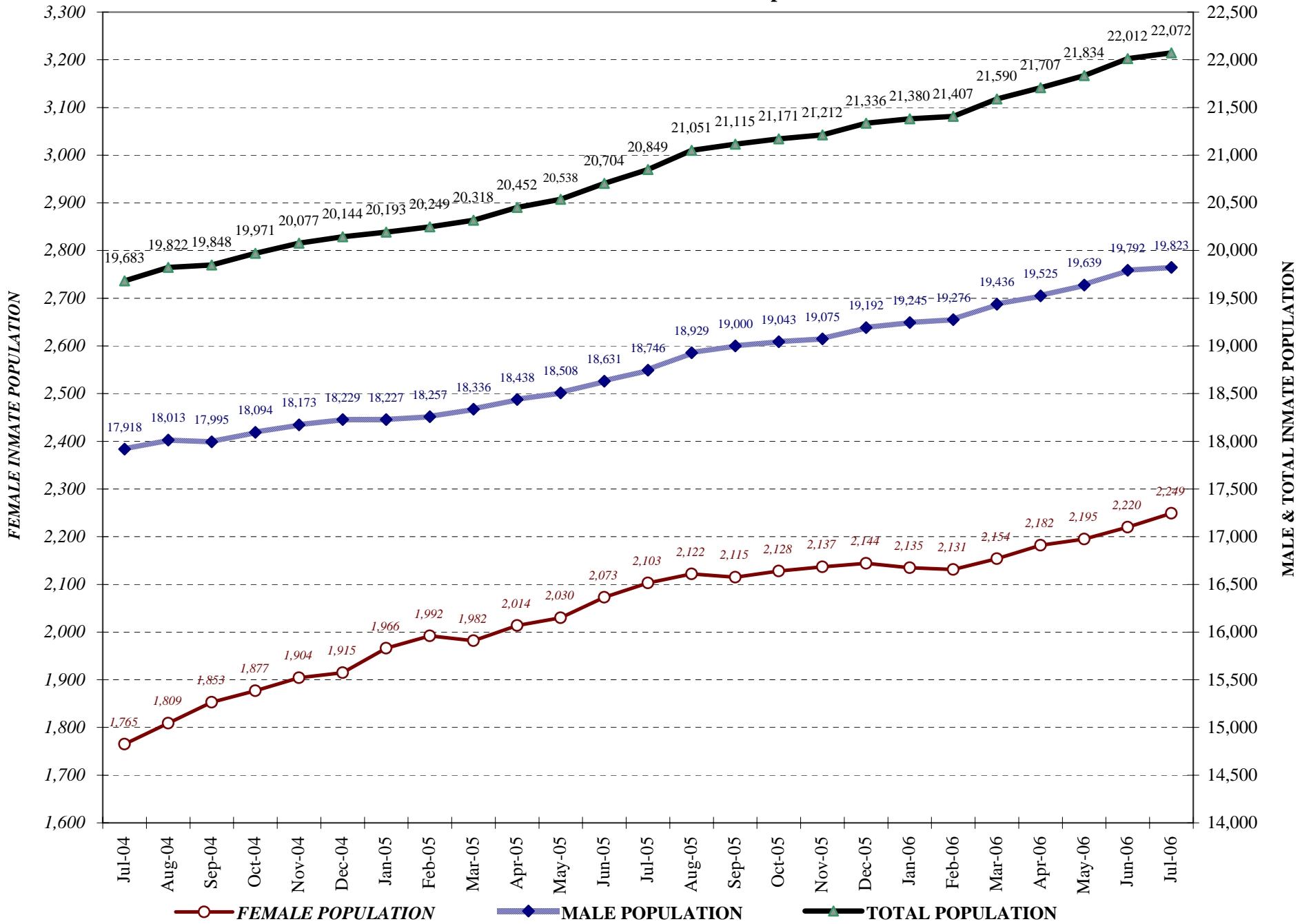
COLORADO DEPARTMENT OF CORRECTIONS

Adult Prison Releases

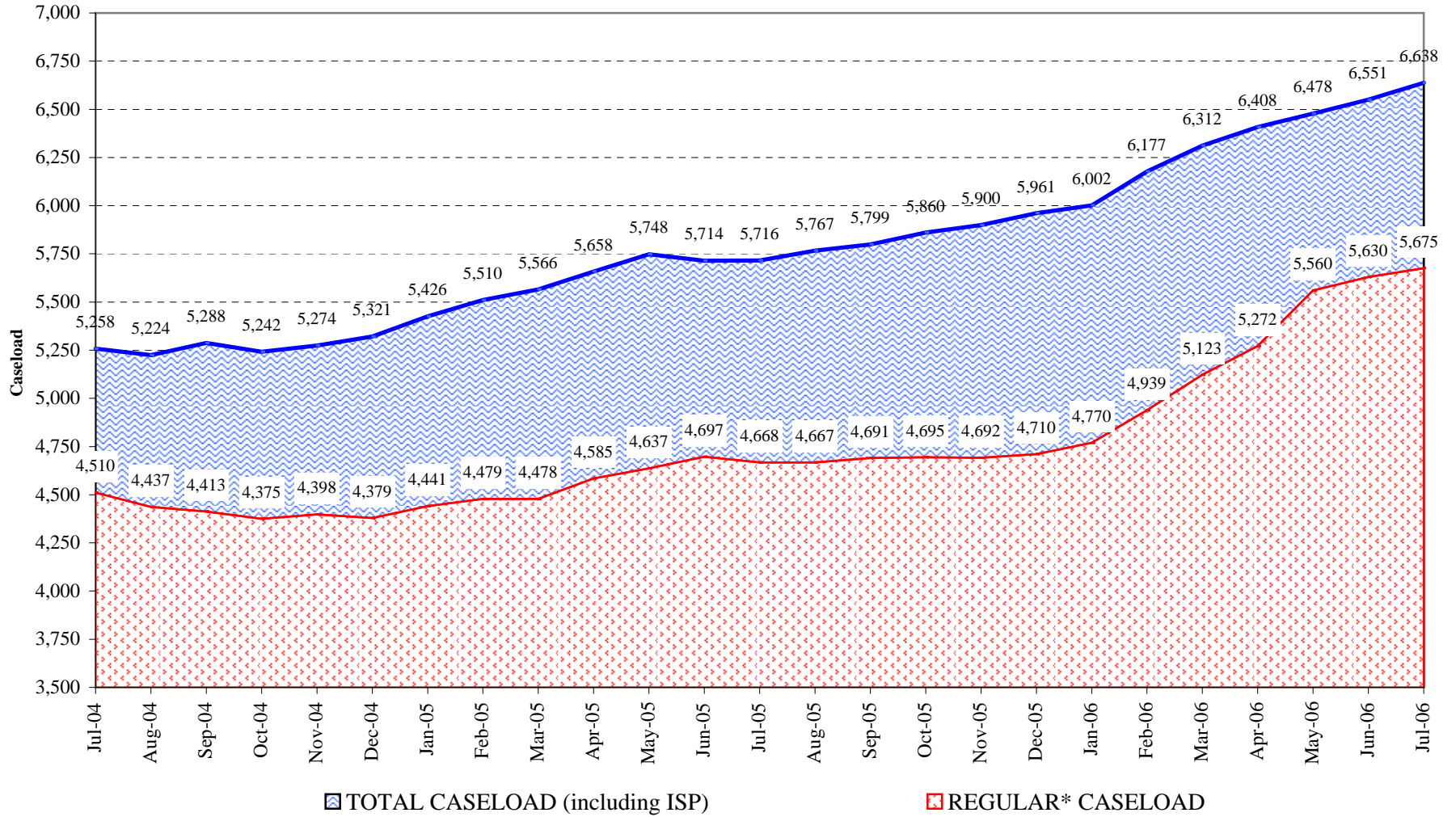


Total releases include releases to discretionary parole, mandatory parole and reparole, all types of discharges and other releases as detailed on the previous page.

COLORADO DEPARTMENT OF CORRECTIONS Adult Jurisdiction Inmate Population



COLORADO DEPARTMENT OF CORRECTIONS Parole Population



* Regular caseload includes interstate parole, but excludes out-of-state parolees and absconders.