

**COLORADO DEPARTMENT OF CORRECTIONS
MONTHLY POPULATION AND CAPACITY REPORT
AS OF MAY 31, 2006**

6-Jun-06

	04/30/06	CAPACITY CHANGES	----- 05/31/06 -----		----- 05/31/05 -----	
	OPERATIONAL CAPACITY*		OPERATIONAL CAPACITY*	ON-GRDS POPULATION	OPERATIONAL CAPACITY*	ON-GRDS POPULATION
COLO STATE PENITENTIARY	756		756	756	756	748
CENTENNIAL CORR FAC	336		336	322	320	294
STERLING CORR FAC	2,445		2,445	2,410	2,445	2,400
LIMON CORR FAC	953		953	948	953	944
ARK VALLEY CORR FAC	1,007		1,007	997	1,007	997
BUENA VISTA CORR FAC	826		826	813	826	804
BUENA VISTA MIN CTR	292		292	285	292	288
COLO TERR CORR FAC	786		786	784	786	793
FORT LYON CORR FAC	500		500	477	500	497
FREMONT CORR FAC	1,471		1,471	1,467	1,471	1,451
LA VISTA CORR FAC	72		72	67	0	0
ARROWHEAD CORR CTR	494		494	491	494	489
FOUR MILE CORR CTR	499		499	495	499	496
PUEBLO MINIMUM CTR	184		184	181	256	251
TRINIDAD CORR FAC	484		484	468	484	478
S.T.U. at Y.O.S.	30		30	26	30	23
SKYLINE CORR CTR	249		249	246	249	245
COLORADO CORR CTR	150		150	150	150	144
DELTA CORR CTR	484		484	477	484	481
RIFLE CORR CTR	192		192	192	192	189
COLO CORR ALT PROGRAM	100		100	93	100	119
COLO WOMEN'S CORR FAC	224		224	219	224	219
DENVER WOMEN'S CORR FAC	900		900	884	900	886
DENVER REC DIAG CTR	480		480	496	480	484
SAN CARLOS CORR FAC	255		255	248	255	249
SUBTOTAL	14,169	0	14,169	13,992	14,153	13,969
CONTRACTS:						
BENT COUNTY CORR CTR	724		724	694	724	709
HUERFANO COUNTY CORR CTR	774		774	756	778	757
CROWLEY COUNTY CORR FAC	1,754		1,754	1,185	1,185	871
KIT CARSON COUNTY CORR FAC	824		824	765	820	713
TALLAHATCHIE MS CORR FAC	0		0	0	121	128
CHEYENNE MTN REENTRY CTR	500		500	495	0	0
BRUSH CORR FAC	270		270	250	75	60
OFF-GROUNDS POPULATION:						
ESCAPEES/WALKAWAYS				215		198
				260		260
REVOCATIONS-JAIL				0		0
JAIL BACKLOG:						
BACKLOG LESS THAN 72 HOURS			113		107	
BACKLOG GREATER THAN 72 HOURS (FISCAL YTD AVE = 499)			420		302	
BACKLOG-PAROLEES AWAITING TRANSFER			81		89	
TOTAL JAIL BACKLOG				614		498
COUNTY JAIL CONTRACTS				33		58
COMMUNITY CORRECTIONS						
COMMUNITY						
RESIDENTIAL	1,345	-21	1,324	1,324	1,206	1,206
PAROLE REVOCATIONS	0	1	1	1	3	3
REVOKED-RET TO CUST	227	-13	214	214	190	190
NON-RESIDENTIAL	57	8	65	65	55	55
REGRESSIONS	51	6	57	57	39	39
TOTAL COMMUNITY	1,680	-19	1,661	1,661	1,493	1,493
ISP						
RESIDENTIAL	853	-2	851	851	773	773
NON-RESIDENTIAL	35	16	51	51	41	41
REGRESSIONS	9	3	12	12	10	10
TOTAL ISP	897	17	914	914	824	824
TOTAL COMM. CORRECTIONS	2,577	-2	2,575	2,575	2,317	2,317
MALE POPULATION			19,639		18,508	
FEMALE POPULATION			2,195		2,030	
TOTAL INMATE JURISDICTIONAL POPULATION				21,834		20,538

*OPERATIONAL CAPACITY INCLUDES ALL BEDS AVAILABLE FOR USE, INCLUDING MANAGEMENT CONTROL UNITS, BUT EXCLUDES EMERGENCY DOUBLE BUNKING

COLORADO DEPARTMENT OF CORRECTIONS
MONTHLY POPULATION AND CAPACITY REPORT
AS OF MAY 31, 2006

6-Jun-06

CURRENT MONTH CHANGES IN CAPACITY:

NONE

NET MONTHLY GROWTH RATE:

CURRENT MONTH	127
FISCAL YEAR-TO-DATE AVERAGE	103

YOUTHFUL OFFENDER SYSTEM

	----- 05/31/06 -----				05/31/05
	DRDC	PUEBLO	CONTRACT FACILITIES	COMM. CORR.	TOTAL POPULATION
INTAKE/IDO	0	9			9
RFP/REMEDICATION	0	8			8
PHASE I	0	140	0		140
PHASE II	0	13			13
PHASE III		0		46	46
OFF GROUNDS/BACKLOG					1
TOTAL Y.O.S. POPULATION	0	170	0	46	217

	CURRENT MONTH	FISCAL YR. TO DATE
YOS ADMISSIONS	2	49
YOS RELEASES:		
COMPLETION OF SENTENCE	3	36
JUDICIAL RELEASE TO PROB/CT ORD DISCHG	0	1
JUDICIAL TRANSFER TO DOC	0	0
TERMINATION/FAILURE	2	15
DECEASED	0	1
TOTAL RELEASES	5	53

PAROLE CASELOAD

	----- 05/31/06 -----			----- 04/30/06 -----		----- 05/31/05 -----	
	DOMESTIC	INTERST PAR/PROB	TOTAL CASELOAD	DOMESTIC	TOTAL CASELOAD	DOMESTIC	TOTAL CASELOAD
DENVER REGION							
REGULAR	2,048	98	2,146	1,890	1,990	1,720	1,824
ISP	450		450	581	581	482	482
SUBTOTAL	2,498	98	2,596	2,471	2,571	2,202	2,306
NORTHEAST REGION							
REGULAR	1,424	48	1,472	1,364	1,409	1,193	1,238
ISP	229		229	273	273	273	273
SUBTOTAL	1,653	48	1,701	1,637	1,682	1,466	1,511
SOUTHEAST REGION							
REGULAR	1,239	72	1,311	1,201	1,273	983	1,051
ISP	180		180	201	201	257	257
SUBTOTAL	1,419	72	1,491	1,402	1,474	1,240	1,308
WESTERN REGION							
REGULAR	588	43	631	559	600	472	524
ISP	59		59	81	81	99	99
SUBTOTAL	647	43	690	640	681	571	623
TOTAL CASELOAD							
REGULAR	5,299	261	5,560	5,014	5,272	4,368	4,637
ISP	918		918	1,136	1,136	1,111	1,111
TOTAL	6,217	261	6,478	6,150	6,408	5,479	5,748
ADDITIONAL CASELOAD:							
OUT-OF-STATE PAROLEES			1,633		1,643		1,481
PAROLEE ABSCONDERS			590		572		569

COLORADO DEPARTMENT OF CORRECTIONS
MONTHLY POPULATION AND CAPACITY REPORT
AS OF MAY 31, 2006

6-Jun-06

	05/31/2006 POPULATION			----- FINAL CUSTODY DESIGNATION* -----					
	On-Grds.	Off-Grds	TOTAL	Uncls.	Ad.Seg	Close	Medium	Min.-Res.	Minimum
MALE POPULATION									
COLO STATE PENITENTIARY	756	1	757			754	3		
CENTENNIAL CORR FAC	322	0	322			138	167	10	4
STERLING CORR FAC	2,410	23	2,433			226	729	567	536
LIMON CORR FAC	948	8	956			19	687	180	54
ARK VALLEY CORR FAC	997	20	1,017			6	437	340	159
BUENA VISTA CORR FAC	813	12	825			20	317	301	136
BUENA VISTA MIN CTR	285	3	288					3	212
COLO TERR CORR FAC	783	6	789			3	227	237	202
FORT LYON CORR FAC	477	6	483				27	246	144
FREMONT CORR FAC	1,467	11	1,478			16	189	443	534
ARROWHEAD CORR CTR	491	3	494					2	321
FOUR MILE CORR CTR	495	4	499					2	338
TRINIDAD CORR FAC	468	7	475					6	409
S.T.U. at Y.O.S.	26	1	27					17	7
SKYLINE CORR CTR	246	4	250					1	4
COLORADO CORR CTR	150	0	150						4
DELTA CORR CTR	477	8	485				1		1
RIFLE CORR CTR	192	0	192						
COLO CORR ALT PROGRAM	87	12	99					3	9
DENVER REC DIAG CTR	491	14	505	155	15	59	93	118	65
SAN CARLOS CORR FAC	248	4	252		24	88	54	47	39
CONTRACTS:									
BENT COUNTY CORR CTR	694	8	702		1	10	339	212	140
HUERFANO COUNTY CORR CTR	756	7	763			19	450	172	122
CROWLEY COUNTY CORR FAC	1,185	18	1,203		3	6	716	288	190
KIT CARSON COUNTY CORR FAC	765	14	779			25	421	219	114
CHEYENNE MTN REENTRY CTR	495	2	497		1		153	190	153
COMMUNITY/ISP	1,754	101	1,855			6	36	41	1,772
TOTAL MALE POPULATION	18,278	297	18,575	155	1,226	2,997	4,620	4,361	5,216
PERCENT OF TOTAL				0.8%	6.6%	16.1%	24.9%	23.5%	28.1%
FEMALE POPULATION									
COLO WOMEN'S CORR FAC	219	4	223			60	81	49	33
DENVER WOMEN'S CORR FAC	884	9	893	12	26	121	241	288	205
LA VISTA CORR FAC	67	2	69				3	46	20
PUEBLO MINIMUM CTR	181	3	184				1	112	71
COLO CORR ALT PROGRAM	6	0	6						6
SAN CARLOS CORR FAC	0	0	0						
DENVER REC DIAG CTR INF	5	0	5			1		2	2
COLO TERR CORR FAC INF.	1	0	1				1		
CONTRACTS:									
BRUSH CORR FAC	250	1	251			1	102	104	44
COMMUNITY/ISP	421	15	436				8	11	417
TOTAL FEMALE POPULATION	2,034	34	2,068	12	26	183	437	612	798
PERCENT OF TOTAL				0.6%	1.3%	8.8%	21.1%	29.6%	38.6%

*Final custody designations for jail backlog and contracts, fugitive, community regressions, and parole revocations are not reported.

COLORADO DEPARTMENT OF CORRECTIONS
ADULT INMATE JURISDICTIONAL POPULATION (1)

DATE: 6/6/2006

DATE	MALE POPULATION			FEMALE POPULATION			TOTAL POPULATION		
	Male Population	Net Change	Fiscal Y-T-D Average	Female Population	Net Change	Fiscal Y-T-D Average	Total Population	Net Change	Fiscal Y-T-D Average
05-31-06	19,639	114	92	2,195	13	11	21,834	127	103
04-30-06	19,525	89		2,182	28		21,707	117	
03-31-06	19,436	160		2,154	23		21,590	183	
02-28-06	19,276	31		2,131	-4		21,407	27	
01-31-06	19,245	53		2,135	-9		21,380	44	
12-31-05	19,192	117		2,144	7		21,336	124	
11-30-05	19,075	32		2,137	9		21,212	41	
10-31-05	19,043	43		2,128	13		21,171	56	
09-30-05	19,000	71		2,115	-7		21,115	64	
08-31-05	18,929	183		2,122	19		21,051	202	
07-31-05	18,746	115		2,103	30		20,849	145	
06-30-05	18,631	123		2,073	43		20,704	166	
05-31-05	18,508	70		2,030	16		20,538	86	
04-30-05	18,438	102		2,014	32		20,452	134	
03-31-05	18,336	79		1,982	-10		20,318	69	
02-28-05	18,257	30		1,992	26		20,249	56	
01-31-05	18,227	-2		1,966	51		20,193	49	
12-31-04	18,229	56	68	1,915	11	27	20,144	67	95
11-30-04	18,173	79		1,904	27		20,077	106	
10-31-04	18,094	99		1,877	24		19,971	123	
09-30-04	17,995	-18		1,853	44		19,848	26	
08-31-04	18,013	95		1,809	44		19,822	139	
07-31-04	17,918	104		1,765	10		19,683	114	
06-30-04	17,814	-4		1,755	0		19,569	-4	
05-31-04	17,818	-5		1,755	-1		19,573	-6	
04-30-04	17,823	43		1,756	-18		19,579	25	
03-31-04	17,780	42		1,774	11		19,554	53	
02-29-04	17,738	2		1,763	4		19,501	6	
01-31-04	17,736	32		1,759	9		19,495	41	
12-31-03	17,704	110	49	1,750	26	11	19,454	136	60
11-30-03	17,594	9		1,724	16		19,318	25	
10-31-03	17,585	82		1,708	12		19,293	94	
09-30-03	17,503	96		1,696	23		19,199	119	
08-31-03	17,407	89		1,673	23		19,080	112	
07-31-03	17,318	92		1,650	30		18,968	122	
06-30-03	17,226		57	1,620		10	18,846		67
06-30-02	16,539		87	1,506		14	18,045		101
06-30-01	15,493		63	1,340		6	16,833		70
06-30-00	14,733		99	1,266		7	15,999		106
06-30-99	13,547		75	1,179		14	14,726		89
06-30-98	12,647		81	1,016		9	13,663		89
06-30-97	11,681			909			12,590		

(1) Adult inmate jurisdictional population includes on-grounds, off-grounds, out-of-state, escapees, and jail backlog and excludes offenders sentenced to the Youthful Offender System (Y.O.S.).

COLORADO DEPARTMENT OF CORRECTIONS
ADULT INMATE RELEASES FROM PRISON
TOTAL Population (Male and Female)

(Revised) Date: 4/10/2007

	Parole				Discharge					Other				Total
	Discretionary*	Mandatory*	Mand. Repair.*	Com. Supv.	Sentence	H.B. 1087	Martin/Cooper	Chgs/Det.	Com Spv. Elim	Probation	Ct. Ord. Dsch.	Appeal Bond	Deceased	
May-06	317	235	75	0	34	52	10	15	0	13	9	0	3	763
Apr-06	227	235	91	0	41	54	17	17	0	10	7	0	8	707
Mar-06	305	282	113	0	39	46	10	12	0	18	5	1	2	833
Feb-06	305	250	71	0	34	39	13	10	0	27	14	0	1	764
Jan-06	316	218	75	0	45	51	11	14	0	13	6	0	7	756
Dec-05	235	238	98	0	51	47	15	17	0	18	12	0	6	737
Nov-05	183	297	126	0	37	55	7	13	0	10	18	0	5	751
Oct-05	157	304	130	0	34	58	11	19	0	17	10	1	5	746
Sep-05	142	318	90	0	30	61	17	14	0	23	6	0	3	704
Aug-05	124	312	109	0	33	47	17	20	0	14	11	0	6	693
Jul-05	121	306	109	0	46	48	13	13	0	15	9	0	8	688
Jun-05	144	312	105	0	28	57	13	16	0	22	13	0	0	710
May-05	148	313	95	0	42	61	8	14	0	16	7	1	7	712
Apr-05	121	313	125	0	40	57	9	20	0	18	12	0	10	725
Mar-05	155	311	100	0	46	64	15	21	0	24	11	1	4	752
Feb-05	132	290	109	0	58	63	16	14	0	17	12	0	5	716
Jan-05	183	274	113	0	53	54	16	19	0	10	2	0	5	729
Dec-04	143	273	98	0	35	47	15	12	0	24	15	1	6	669
Nov-04	120	287	73	0	53	60	12	17	0	16	9	3	4	654
Oct-04	102	292	78	0	42	66	16	14	0	22	11	0	3	646
Sep-04	110	286	125	0	47	48	15	25	0	20	6	0	3	685
Aug-04	115	266	88	0	52	54	15	17	0	13	7	0	4	631
Jul-04	125	227	135	0	41	52	7	10	0	14	8	0	1	620
Jun-04	161	282	61	0	61	55	17	20	0	9	13	0	3	682

Definitions of Release Types

Discretionary parole-Released to parole through Parole Board discretion prior to mandatory release or sentence discharge date.

Mandatory parole-Released to parole on mandatory release date.

Mand. Repair-Reparoled on specific date set by Parole Board (includes S.B. 252 reparoles). n/a - breakout not available prior to June 2004.

Com. Supv.-Released to serve 12 months of community supervision.

Sentence discharge-Completion of sentence with no further supervision.

H.B. 1087 discharge-Completion of sentence with no further supervision, subject to earn time provisions of H.B. 95-1087.

Martin/ Cooper discharge-Completion of sentence with no further supervision, sex offender subject to Martin/Cooper Supreme Court decision.

Chgs/ Det. discharge-Completion of sentence, released to other law enforcement for pending charges or detainees.

Com. Spv. Elim discharge-Completion of sentence following reincarceration on community supervision sentence.

Probation-Released by court to probation.

Ct. Ord. Dsch.-Released by court order.

Appeal Bond-Released by court to appeal bond.

Deceased-Offender death in prison.

***Due to the decrease in community transportation services, the Department implemented a procedural change in December 2005 with regards to releasing inmates on weekends. As a result of this change, discretionary releases have increased and mandatory releases have decreased.**

COLORADO DEPARTMENT OF CORRECTIONS
ADULT INMATE RELEASES FROM PRISON
Male Population Only

(Revised) Date: 4/10/2007

	Parole				Discharge					Other				Total
	Discretionary*	Mandatory*	Mand. Repar.*	Com. Supv.	Sentence	H.B. 1087	Martin/Cooper	Chgs/Det.	Com Spv. Elim	Probation	Ct. Ord. Dsch.	Appeal Bond	Deceased	
May-06	269	202	60	0	33	47	10	15	0	12	8	0	3	659
Apr-06	178	213	79	0	35	47	17	16	0	9	6	0	8	608
Mar-06	267	246	100	0	36	41	10	12	0	14	5	1	2	734
Feb-06	253	220	63	0	33	37	13	10	0	25	14	0	1	669
Jan-06	266	187	63	0	43	48	11	13	0	12	5	0	6	654
Dec-05	193	204	84	0	48	43	15	17	0	16	11	0	4	635
Nov-05	156	251	114	0	32	47	7	12	0	10	17	0	4	650
Oct-05	127	273	101	0	32	50	11	17	0	15	10	1	4	641
Sep-05	111	283	78	0	26	57	16	12	0	22	6	0	3	614
Aug-05	98	280	94	0	31	41	17	19	0	12	8	0	6	606
Jul-05	100	253	95	0	43	47	13	13	0	11	8	0	8	591
Jun-05	113	280	94	0	25	52	13	13	0	20	13	0	0	623
May-05	127	270	83	0	39	54	8	14	0	15	6	1	6	623
Apr-05	103	270	109	0	37	49	9	20	0	16	8	0	10	631
Mar-05	129	275	82	0	43	62	15	19	0	23	10	1	4	663
Feb-05	109	259	100	0	53	57	16	13	0	15	11	0	5	638
Jan-05	159	250	99	0	50	48	16	18	0	8	2	0	4	654
Dec-04	118	238	82	0	33	46	15	12	0	21	14	0	6	585
Nov-04	103	250	63	0	50	56	12	16	0	15	8	3	4	580
Oct-04	83	270	67	0	38	61	16	14	0	20	10	0	3	582
Sep-04	95	262	114	0	44	44	15	23	0	16	5	0	1	619
Aug-04	97	238	76	0	49	50	15	17	0	11	5	0	4	562
Jul-04	106	198	121	0	39	44	7	10	0	12	7	0	1	545
Jun-04	n/a	n/a	n/a	0	n/a	n/a	n/a	n/a	n/a	n/a	n/a	n/a	n/a	n/a

Definitions of Release Types

Discretionary parole-Released to parole through Parole Board discretion prior to mandatory release or sentence discharge date.

Mandatory parole-Released to parole on mandatory release date.

Mand. Repar-Reparoled on specific date set by Parole Board (includes S.B. 252 reparoles). n/a - breakout not available prior to June 2004.

Com. Supv.-Released to serve 12 months of community supervision.

Sentence discharge-Completion of sentence with no further supervision.

H.B. 1087 discharge-Completion of sentence with no further supervision, subject to earn time provisions of H.B. 95-1087.

Martin/ Cooper discharge-Completion of sentence with no further supervision, sex offender subject to Martin/Cooper Supreme Court decision.

Chgs/ Det. discharge-Completion of sentence, released to other law enforcement for pending charges or detainees.

Com. Spv. Elim discharge-Completion of sentence following reincarceration on community supervision sentence.

Probation-Released by court to probation.

Ct. Ord. Dsch.-Released by court order.

Appeal Bond-Released by court to appeal bond.

Deceased-Offender death in prison.

***Due to the decrease in community transportation services, the Department implemented a procedural change in December 2005 with regards to releasing inmates on weekends. As a result of this change, discretionary releases have increased and mandatory releases have decreased.**

COLORADO DEPARTMENT OF CORRECTIONS
ADULT INMATE RELEASES FROM PRISON
Female Population Only

Date: 6/6/2006

	Parole				Discharge					Other				Total
	Discretionary*	Mandatory*	Mand. Repar.*	Com. Supv.	Sentence	H.B. 1087	Martin/Cooper	Chgs/Det.	Com Spv. Elim	Probation	Ct. Ord. Dsch.	Appeal Bond	Deceased	
May-06	48	33	15	0	1	5	0	0	0	1	1	0	0	104
Apr-06	49	22	12	0	6	7	0	1	0	1	1	0	0	99
Mar-06	38	36	13	0	3	5	0	0	0	4	0	0	0	99
Feb-06	52	30	8	0	1	2	0	0	0	2	0	0	0	95
Jan-06	50	31	12	0	2	3	0	1	0	1	1	0	1	102
Dec-05	42	34	14	0	3	4	0	0	0	2	1	0	2	102
Nov-05	27	46	12	0	5	8	0	1	0	0	1	0	1	101
Oct-05	30	31	29	0	2	8	0	2	0	2	0	0	1	105
Sep-05	31	35	12	0	4	4	1	2	0	1	0	0	0	90
Aug-05	26	32	15	0	2	6	0	1	0	2	3	0	0	87
Jul-05	21	53	14	0	3	1	0	0	0	4	1	0	0	97
Jun-05	31	32	11	0	3	5	0	3	0	2	0	0	0	87
May-05	21	43	12	0	3	7	0	0	0	1	1	0	1	89
Apr-05	18	43	16	0	3	8	0	0	0	2	4	0	0	94
Mar-05	26	36	18	0	3	2	0	2	0	1	1	0	0	89
Feb-05	23	31	9	0	5	6	0	1	0	2	1	0	0	78
Jan-05	24	24	14	0	3	6	0	1	0	2	0	0	1	75
Dec-04	25	35	16	0	2	1	0	0	0	3	1	1	0	84
Nov-04	17	37	10	0	3	4	0	1	0	1	1	0	0	74
Oct-04	19	22	11	0	4	5	0	0	0	2	1	0	0	64
Sep-04	15	24	11	0	3	4	0	2	0	4	1	0	2	66
Aug-04	18	28	12	0	3	4	0	0	0	2	2	0	0	69
Jul-04	19	29	14	0	2	8	0	0	0	2	1	0	0	75
Jun-04	n/a	n/a	n/a	0	n/a	n/a	n/a	n/a	n/a	n/a	n/a	n/a	n/a	n/a

Definitions of Release Types

Discretionary parole-Released to parole through Parole Board discretion prior to mandatory release or sentence discharge date.

Mandatory parole-Released to parole on mandatory release date.

Mand. Repar-Reparoled on specific date set by Parole Board (includes S.B. 252 reparoles). n/a - breakout not available prior to June 2004.

Com. Supv.-Released to serve 12 months of community supervision.

Sentence discharge-Completion of sentence with no further supervision.

H.B. 1087 discharge-Completion of sentence with no further supervision, subject to earn time provisions of H.B. 95-1087.

Martin/ Cooper discharge-Completion of sentence with no further supervision, sex offender subject to Martin/Cooper Supreme Court decision.

Chgs/ Det. discharge-Completion of sentence, released to other law enforcement for pending charges or detainees.

Com. Spv. Elim discharge-Completion of sentence following reincarceration on community supervision sentence.

Probation-Released by court to probation.

Ct. Ord. Dsch.-Released by court order.

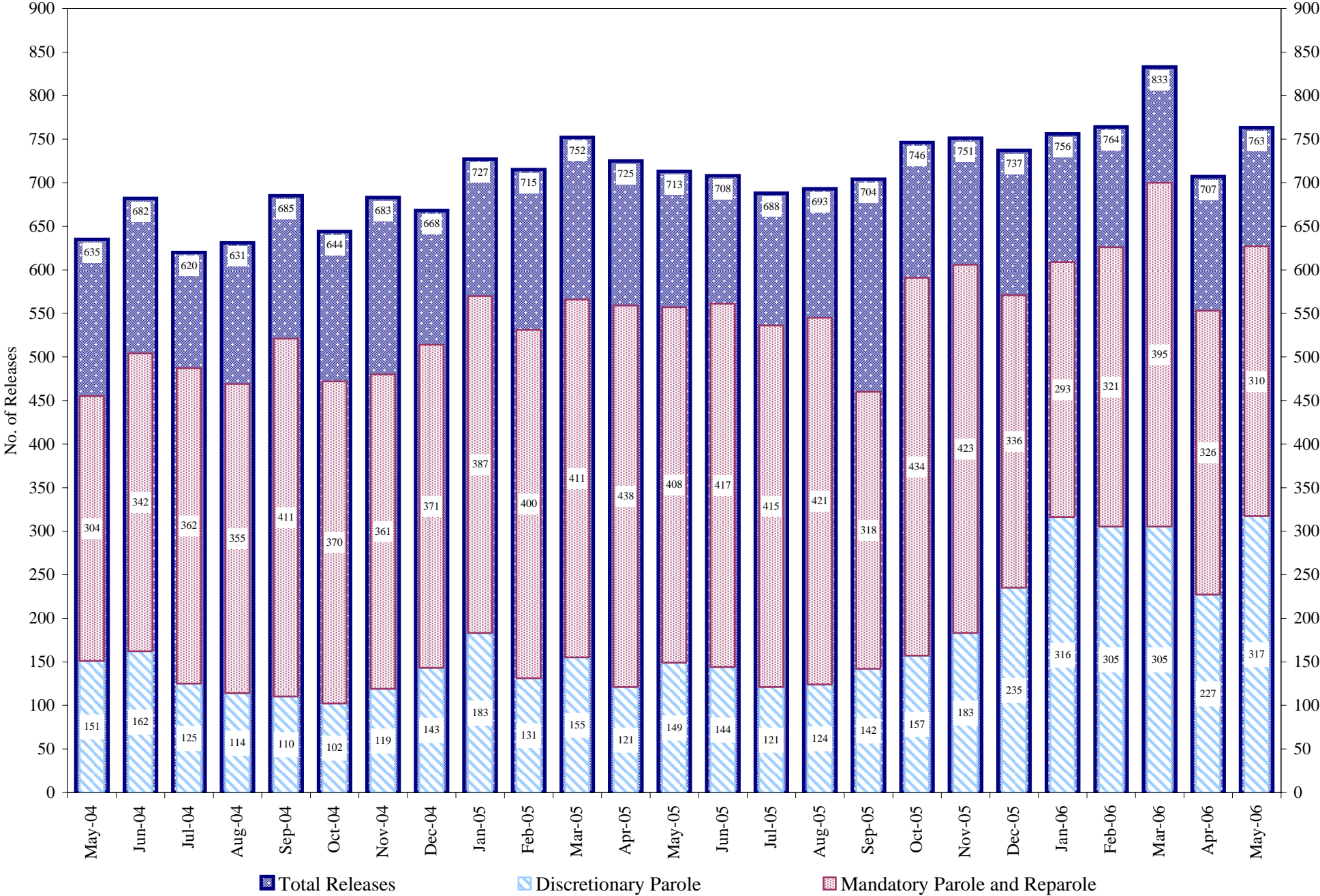
Appeal Bond-Released by court to appeal bond.

Deceased-Offender death in prison.

*Due to the decrease in community transportation services, the Department implemented a procedural change in December 2005 with regards to releasing inmates on weekends. As a result of this change, discretionary releases have increased and mandatory releases have decreased.

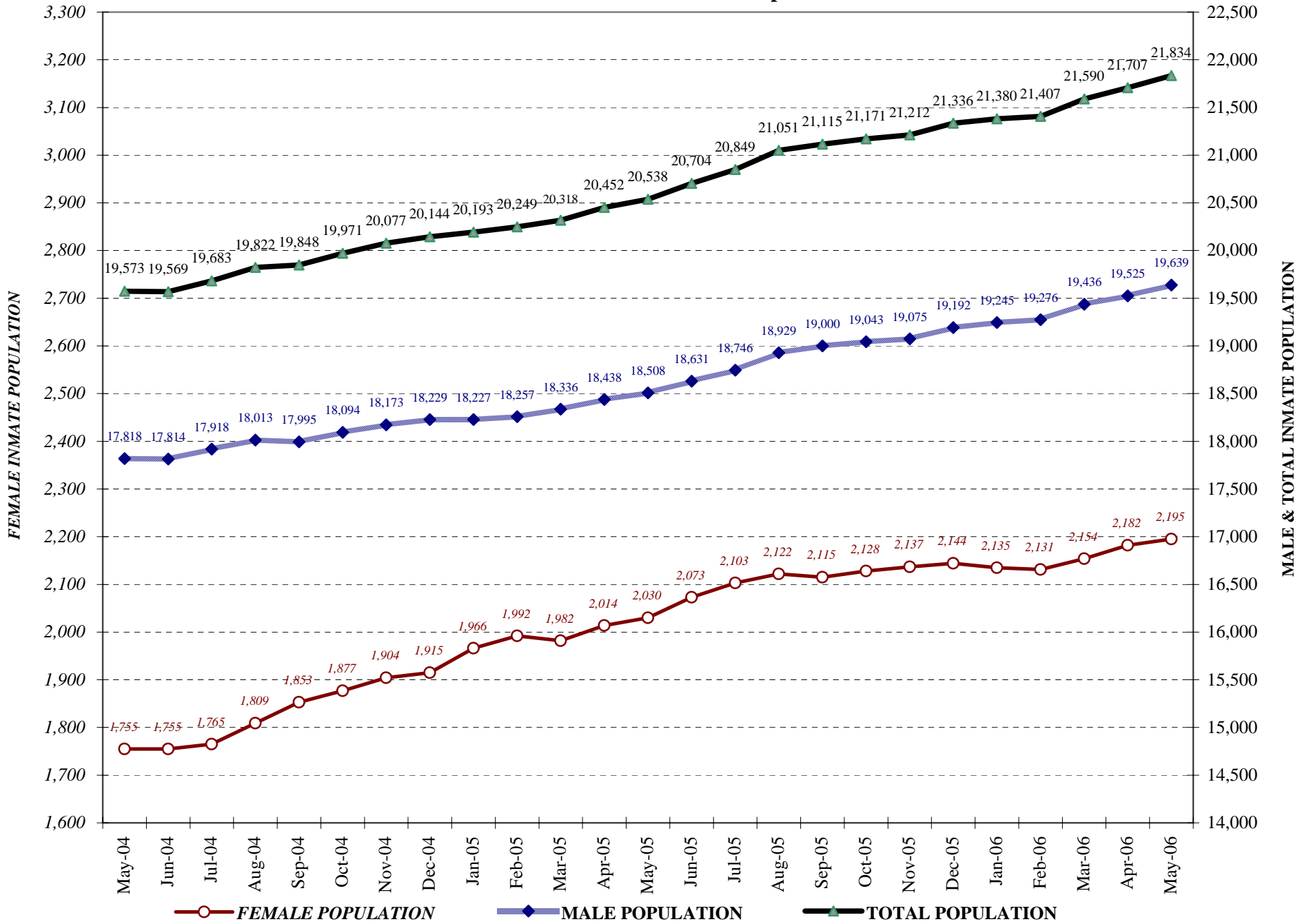
COLORADO DEPARTMENT OF CORRECTIONS

Adult Prison Releases

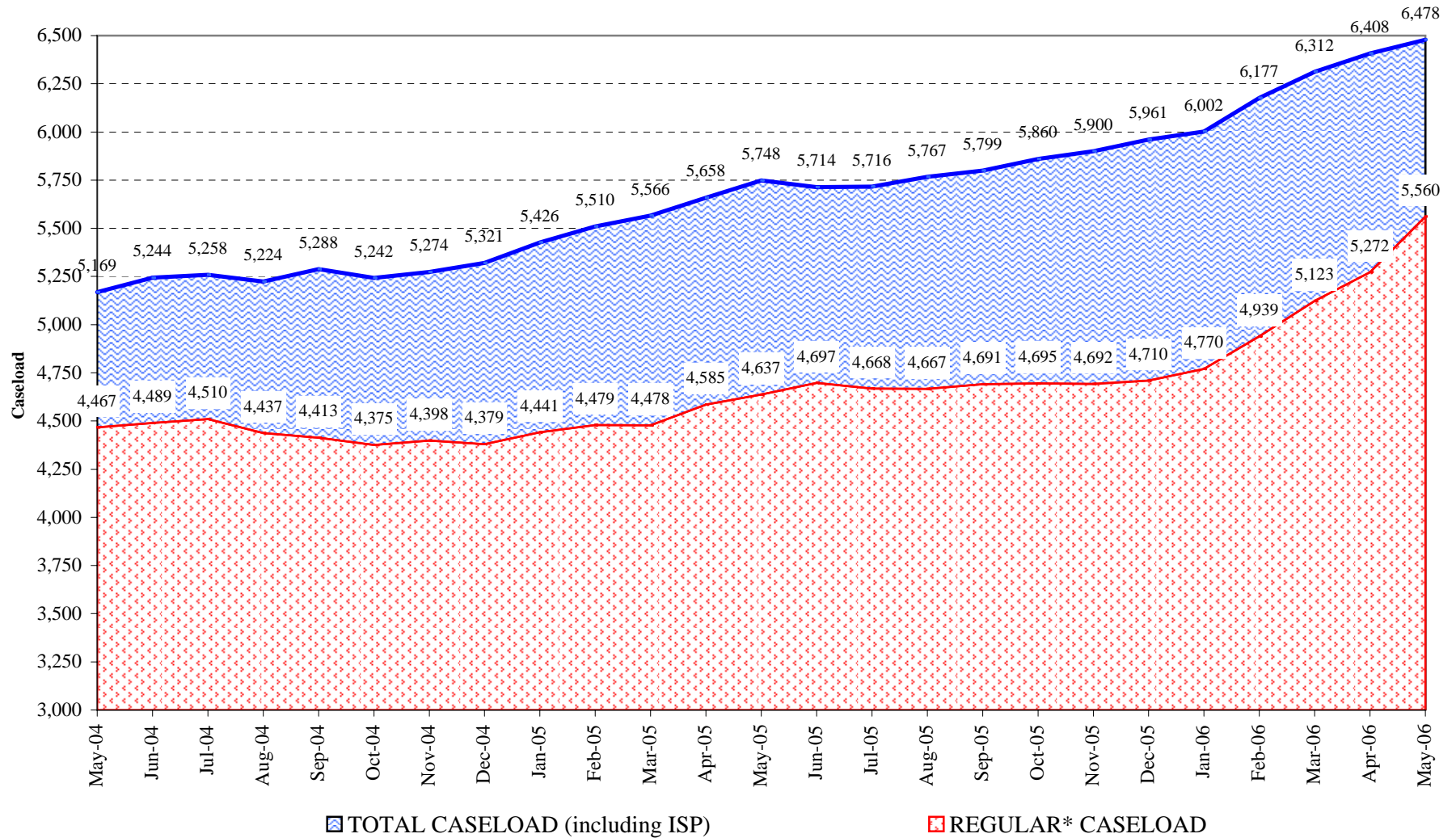


Total releases include releases to discretionary parole, mandatory parole and reparole, all types of discharges and other releases as detailed on the previous page.

COLORADO DEPARTMENT OF CORRECTIONS Adult Jurisdiction Inmate Population



COLORADO DEPARTMENT OF CORRECTIONS Parole Population



* Regular caseload includes interstate parole, but excludes out-of-state parolees and absconders.