

**COLORADO DEPARTMENT OF CORRECTIONS
MONTHLY POPULATION AND CAPACITY REPORT
AS OF MARCH 31, 2006**

7-Apr-06

	02/28/06	CAPACITY CHANGES	----- 03/31/06 -----		----- 03/31/05 -----	
	OPERATIONAL CAPACITY*		OPERATIONAL CAPACITY*	ON-GRDS POPULATION	OPERATIONAL CAPACITY*	ON-GRDS POPULATION
COLO STATE PENITENTIARY	756		756	752	756	750
CENTENNIAL CORR FAC	336		336	327	320	305
STERLING CORR FAC	2,445		2,445	2,367	2,445	2,408
LIMON CORR FAC	953		953	945	953	946
ARK VALLEY CORR FAC	1,007		1,007	1,000	1,007	1,003
BUENA VISTA CORR FAC	826		826	826	826	824
BUENA VISTA MIN CTR	292		292	288	292	288
COLO TERR CORR FAC	786		786	795	786	790
FORT LYON CORR FAC	500		500	439	500	492
FREMONT CORR FAC	1,471		1,471	1,454	1,471	1,443
ARROWHEAD CORR CTR	494		494	490	494	491
FOUR MILE CORR CTR	499		499	496	499	495
PUEBLO MINIMUM CTR	256		256	250	256	252
TRINIDAD CORR FAC	484		484	473	484	473
S.T.U. at Y.O.S.	30		30	30	30	24
SKYLINE CORR CTR	249		249	238	249	246
COLORADO CORR CTR	150		150	150	150	149
DELTA CORR CTR	484		484	462	484	476
RIFLE CORR CTR	192		192	191	192	188
COLO CORR ALT PROGRAM	100		100	108	100	94
COLO WOMEN'S CORR FAC	224		224	221	224	221
DENVER WOMEN'S CORR FAC	900		900	888	900	888
DENVER REC DIAG CTR	480		480	467	480	500
SAN CARLOS CORR FAC	255		255	254	255	250
SUBTOTAL	14,169	0	14,169	13,911	14,153	13,996
CONTRACTS:						
BENT COUNTY CORR CTR	724		724	719	724	687
HUERFANO COUNTY CORR CTR	774		774	724	778	676
CROWLEY COUNTY CORR FAC	1,754		1,754	1,131	1,185	691
KIT CARSON COUNTY CORR FAC	824		824	726	820	714
TALLAHATCHIE MS CORR FAC	0		0	0	121	128
CHEYENNE MTN REENTRY CTR	500		500	449	0	0
BRUSH CORR FAC	270		270	235	75	54
OFF-GROUNDS POPULATION:						
ESCAPEES/WALKAWAYS				224		207
REVOCATIONS-JAIL				256		237
				0		1
JAIL BACKLOG:						
BACKLOG LESS THAN 72 HOURS			111		122	
BACKLOG GREATER THAN 72 HOURS (FISCAL YTD AVE = 474)			514		387	
BACKLOG-PAROLEES AWAITING TRANSFER			64		87	
TOTAL JAIL BACKLOG				689		596
COUNTY JAIL CONTRACTS				19		32
COMMUNITY CORRECTIONS						
COMMUNITY						
RESIDENTIAL	1,255	21	1,276	1,276	1,197	1,197
PAROLE REVOCATIONS	0	0	0	0	6	6
REVOKED-RET TO CUST	214	4	218	218	178	178
NON-RESIDENTIAL	68	-6	62	62	61	61
REGRESSIONS	35	21	56	56	31	31
TOTAL COMMUNITY	1,572	40	1,612	1,612	1,473	1,473
ISP						
RESIDENTIAL	825	23	848	848	772	772
NON-RESIDENTIAL	37	-3	34	34	50	50
REGRESSIONS	16	-3	13	13	4	4
TOTAL ISP	878	17	895	895	826	826
TOTAL COMM. CORRECTIONS	2,450	57	2,507	2,507	2,299	2,299
MALE POPULATION			19,436		18,257	
FEMALE POPULATION			2,154		1,992	
TOTAL INMATE JURISDICTIONAL POPULATION				21,590		20,318

*OPERATIONAL CAPACITY INCLUDES ALL BEDS AVAILABLE FOR USE, INCLUDING MANAGEMENT CONTROL UNITS, BUT EXCLUDES EMERGENCY DOUBLE BUNKING

**COLORADO DEPARTMENT OF CORRECTIONS
MONTHLY POPULATION AND CAPACITY REPORT
AS OF MARCH 31, 2006**

7-Apr-06

CURRENT MONTH CHANGES IN CAPACITY:

NONE

NET MONTHLY GROWTH RATE:

CURRENT MONTH	183
FISCAL YEAR-TO-DATE AVERAGE	98

YOUTHFUL OFFENDER SYSTEM

	----- 03/31/06 -----				03/31/05
	DRDC	PUEBLO	CONTRACT FACILITIES	COMM. CORR.	TOTAL POPULATION
INTAKE/IDO	0	8			8
RFP/REMEDATION	0	15			15
PHASE I	0	134	0		134
PHASE II	0	15			15
PHASE III		0		42	42
OFF GROUNDS/BACKLOG					2
TOTAL Y.O.S. POPULATION	0	172	0	42	216

	CURRENT MONTH	FISCAL YR. TO DATE
YOS ADMISSIONS	7	42
YOS RELEASES:		
COMPLETION OF SENTENCE	5	32
JUDICIAL RELEASE TO PROB/CT ORD DISCHG	0	1
JUDICIAL TRANSFER TO DOC	0	0
TERMINATION/FAILURE	1	13
DECEASED	0	1
TOTAL RELEASES	6	47

PAROLE CASELOAD

	----- 03/31/06 -----			----- 02/28/06 -----		----- 03/31/05 -----	
	DOMESTIC	INTERST PAR/PROB	TOTAL CASELOAD	DOMESTIC	TOTAL CASELOAD	DOMESTIC	TOTAL CASELOAD
DENVER REGION							
REGULAR	1,848	100	1,948	1,802	1,908	1,654	1,763
ISP	602		602	615	615	479	479
SUBTOTAL	2,450	100	2,550	2,417	2,523	2,133	2,242
NORTHEAST REGION							
REGULAR	1,320	42	1,362	1,265	1,302	1,123	1,170
ISP	292		292	325	325	279	279
SUBTOTAL	1,612	42	1,654	1,590	1,627	1,402	1,449
SOUTHEAST REGION							
REGULAR	1,144	72	1,216	1,105	1,174	959	1,028
ISP	225		225	210	210	235	235
SUBTOTAL	1,369	72	1,441	1,315	1,384	1,194	1,263
WESTERN REGION							
REGULAR	557	40	597	514	555	467	517
ISP	70		70	88	88	95	95
SUBTOTAL	627	40	667	602	643	562	612
TOTAL CASELOAD							
REGULAR	4,869	254	5,123	4,686	4,939	4,203	4,478
ISP	1,189		1,189	1,238	1,238	1,088	1,088
TOTAL	6,058	254	6,312	5,924	6,177	5,291	5,566
ADDITIONAL CASELOAD:							
OUT-OF-STATE PAROLEES			1,640		1,622		1,443
PAROLEE ABSCONDERS			607		610		602

COLORADO DEPARTMENT OF CORRECTIONS
MONTHLY POPULATION AND CAPACITY REPORT
AS OF MARCH 31, 2006

7-Apr-06

	03/31/2006 POPULATION			----- FINAL CUSTODY DESIGNATION* -----					
	On-Grds.	Off-Grds.	TOTAL	Uncls.	Ad.Seg	Close	Medium	Min.-Res.	Minimum
MALE POPULATION									
COLO STATE PENITENTIARY	752	2	754			752	1	1	
CENTENNIAL CORR FAC	327	0	327			139	170	12	3
STERLING CORR FAC	2,367	22	2,389			215	716	526	533
LIMON CORR FAC	945	15	960			10	688	189	54
ARK VALLEY CORR FAC	1,000	15	1,015			3	456	314	159
BUENA VISTA CORR FAC	826	18	844			7	315	331	138
BUENA VISTA MIN CTR	288	2	290					6	212
COLO TERR CORR FAC	795	6	801			4	213	256	213
FORT LYON CORR FAC	439	8	447				29	233	127
FREMONT CORR FAC	1,454	11	1,465			15	195	453	515
ARROWHEAD CORR CTR	490	0	490					1	327
FOUR MILE CORR CTR	496	3	499					2	349
TRINIDAD CORR FAC	473	5	478				1	14	390
S.T.U. at Y.O.S.	30	1	31					11	16
SKYLINE CORR CTR	238	0	238						4
COLORADO CORR CTR	150	1	151			1			3
DELTA CORR CTR	462	3	465						1
RIFLE CORR CTR	191	0	191						
COLO CORR ALT PROGRAM	107	3	110						7
DENVER REC DIAG CTR	466	14	480	149	13	56	92	124	46
SAN CARLOS CORR FAC	254	0	254			26	88	53	44
CONTRACTS:									
BENT COUNTY CORR CTR	719	9	728				8	372	206
HUERFANO COUNTY CORR CTR	724	18	742			1	15	436	173
CROWLEY COUNTY CORR FAC	1,131	28	1,159				3	702	279
KIT CARSON COUNTY CORR FAC	726	13	739				9	427	189
CHEYENNE MTN REENTRY CTR	449	0	449				1	136	184
COMMUNITY/ISP	1,726	80	1,806				10	31	32
TOTAL MALE POPULATION	18,025	277	18,302	149	1,186	2,974	4,598	4,282	5,113
PERCENT OF TOTAL				0.8%	6.5%	16.2%	25.1%	23.4%	27.9%
FEMALE POPULATION									
COLO WOMEN'S CORR FAC	221	3	224				63	84	45
DENVER WOMEN'S CORR FAC	888	14	902	10	23	118	255	295	201
PUEBLO MINIMUM CTR	250	7	257				0	167	90
COLO CORR ALT PROGRAM	1	0	1						1
SAN CARLOS CORR FAC	0	0	0						
DENVER REC DIAG CTR INF	1	0	1						1
COLO TERR CORR FAC INF.	0	0	0						
CONTRACTS:									
BRUSH CORR FAC	235	3	238				1	98	91
COMMUNITY/ISP	398	16	414				1	6	19
TOTAL FEMALE POPULATION	1,994	43	2,037	10	23	183	443	617	761
PERCENT OF TOTAL				0.5%	1.1%	9.0%	21.7%	30.3%	37.4%

*Final custody designations for jail backlog and contracts, fugitive, community regressions, and parole revocations are not reported.

COLORADO DEPARTMENT OF CORRECTIONS
ADULT INMATE JURISDICTIONAL POPULATION (1)

DATE: 4/7/2006

DATE	MALE POPULATION			FEMALE POPULATION			TOTAL POPULATION		
	Male Population	Net Change	Fiscal Y-T-D Average	Female Population	Net Change	Fiscal Y-T-D Average	Total Population	Net Change	Fiscal Y-T-D Average
03-31-06	19,436	160	89	2,154	23	9	21,590	183	98
02-28-06	19,276	31		2,131	-4		21,407	27	
01-31-06	19,245	53		2,135	-9		21,380	44	
12-31-05	19,192	117		2,144	7		21,336	124	
11-30-05	19,075	32		2,137	9		21,212	41	
10-31-05	19,043	43		2,128	13		21,171	56	
09-30-05	19,000	71		2,115	-7		21,115	64	
08-31-05	18,929	183		2,122	19		21,051	202	
07-31-05	18,746	115		2,103	30		20,849	145	
06-30-05	18,631	123		2,073	43		20,704	166	
05-31-05	18,508	70		2,030	16		20,538	86	
04-30-05	18,438	102		2,014	32		20,452	134	
03-31-05	18,336	79		1,982	-10		20,318	69	
02-28-05	18,257	30		1,992	26		20,249	56	
01-31-05	18,227	-2		1,966	51		20,193	49	
12-31-04	18,229	56	68	1,915	11	27	20,144	67	95
11-30-04	18,173	79		1,904	27		20,077	106	
10-31-04	18,094	99		1,877	24		19,971	123	
09-30-04	17,995	-18		1,853	44		19,848	26	
08-31-04	18,013	95		1,809	44		19,822	139	
07-31-04	17,918	104		1,765	10		19,683	114	
06-30-04	17,814	-4		1,755	0		19,569	-4	
05-31-04	17,818	-5		1,755	-1		19,573	-6	
04-30-04	17,823	43		1,756	-18		19,579	25	
03-31-04	17,780	42		1,774	11		19,554	53	
02-29-04	17,738	2		1,763	4		19,501	6	
01-31-04	17,736	32		1,759	9		19,495	41	
12-31-03	17,704	110	49	1,750	26	11	19,454	136	60
11-30-03	17,594	9		1,724	16		19,318	25	
10-31-03	17,585	82		1,708	12		19,293	94	
09-30-03	17,503	96		1,696	23		19,199	119	
08-31-03	17,407	89		1,673	23		19,080	112	
07-31-03	17,318	92		1,650	30		18,968	122	
06-30-03	17,226		57	1,620		10	18,846		67
06-30-02	16,539		87	1,506		14	18,045		101
06-30-01	15,493		63	1,340		6	16,833		70
06-30-00	14,733		99	1,266		7	15,999		106
06-30-99	13,547		75	1,179		14	14,726		89
06-30-98	12,647		81	1,016		9	13,663		89
06-30-97	11,681		73	909		12	12,590		84
06-30-96	10,808			769			11,577		

(1) Adult inmate jurisdictional population includes on-grounds, off-grounds, out-of-state, escapees, and jail backlog and excludes offenders sentenced to the Youthful Offender System (Y.O.S.).

COLORADO DEPARTMENT OF CORRECTIONS
ADULT INMATE RELEASES FROM PRISON
TOTAL Population (Male and Female)

(Revised) Date: 4/10/2007

	Parole				Discharge					Other				Total
	Discretionary*	Mandatory*	Mand. Repar.*	Com. Supv.	Sentence	H.B. 1087	Martin/Cooper	Chgs/Det.	Com Spv. Elim	Probation	Ct. Ord. Dsch.	Appeal Bond	Deceased	
Mar-06	305	282	113	0	39	46	10	12	0	18	5	1	2	833
Feb-06	305	250	71	0	34	39	13	10	0	27	14	0	1	764
Jan-06	316	218	75	0	45	51	11	14	0	13	6	0	7	756
Dec-05	235	238	98	0	51	47	15	17	0	18	12	0	6	737
Nov-05	183	297	126	0	37	55	7	13	0	10	18	0	5	751
Oct-05	157	304	130	0	34	58	11	19	0	17	10	1	5	746
Sep-05	142	318	90	0	30	61	17	14	0	23	6	0	3	704
Aug-05	124	312	109	0	33	47	17	20	0	14	11	0	6	693
Jul-05	121	306	109	0	46	48	13	13	0	15	9	0	8	688
Jun-05	144	312	105	0	28	57	13	16	0	22	13	0	0	710
May-05	148	313	95	0	42	61	8	14	0	16	7	1	7	712
Apr-05	121	313	125	0	40	57	9	20	0	18	12	0	10	725
Mar-05	155	311	100	0	46	64	15	21	0	24	11	1	4	752
Feb-05	132	290	109	0	58	63	16	14	0	17	12	0	5	716
Jan-05	183	274	113	0	53	54	16	19	0	10	2	0	5	729
Dec-04	143	273	98	0	35	47	15	12	0	24	15	1	6	669
Nov-04	120	287	73	0	53	60	12	17	0	16	9	3	4	654
Oct-04	102	292	78	0	42	66	16	14	0	22	11	0	3	646
Sep-04	110	286	125	0	47	48	15	25	0	20	6	0	3	685
Aug-04	115	266	88	0	52	54	15	17	0	13	7	0	4	631
Jul-04	125	227	135	0	41	52	7	10	0	14	8	0	1	620
Jun-04	161	282	61	0	61	55	17	20	0	9	13	0	3	682
May-04	151	304	n/a	0	42	82	18	13	0	24	0	0	1	635
Apr-04	168	318	n/a	0	50	64	17	12	1	16	14	0	7	667

Definitions of Release Types

Discretionary parole-Released to parole through Parole Board discretion prior to mandatory release or sentence discharge date.

Mandatory parole-Released to parole on mandatory release date.

Mand. Repar-Reparoled on specific date set by Parole Board (includes S.B. 252 reparoles). n/a - breakout not available prior to June 2004.

Com. Supv.-Released to serve 12 months of community supervision.

Sentence discharge-Completion of sentence with no further supervision.

H.B. 1087 discharge-Completion of sentence with no further supervision, subject to earn time provisions of H.B. 95-1087.

Martin/ Cooper discharge-Completion of sentence with no further supervision, sex offender subject to Martin/Cooper Supreme Court decision.

Chgs/ Det. discharge-Completion of sentence, released to other law enforcement for pending charges or detainees.

Com. Spv. Elim discharge-Completion of sentence following reincarceration on community supervision sentence.

Probation-Released by court to probation.

Ct. Ord. Dsch.-Released by court order.

Appeal Bond-Released by court to appeal bond.

Deceased-Offender death in prison.

***Due to the decrease in community transportation services, the Department implemented a procedural change in December 2005 with regards to releasing inmates on weekends. As a result of this change, discretionary releases have increased and mandatory releases have decreased.**

COLORADO DEPARTMENT OF CORRECTIONS

ADULT INMATE RELEASES FROM PRISON

Male Population Only

(Revised) Date: 4/10/2007

	Parole				Discharge					Other				Total
	Discretionary*	Mandatory*	Mand. Repair.*	Com. Supv.	Sentence	H.B. 1087	Martin/Cooper	Chgs/Det.	Com Spv. Elim	Probation	Ct. Ord. Dsch.	Appeal Bond	Deceased	
Mar-06	267	246	100	0	36	41	10	12	0	14	5	1	2	734
Feb-06	253	220	63	0	33	37	13	10	0	25	14	0	1	669
Jan-06	266	187	63	0	43	48	11	13	0	12	5	0	6	654
Dec-05	193	204	84	0	48	43	15	17	0	16	11	0	4	635
Nov-05	156	251	114	0	32	47	7	12	0	10	17	0	4	650
Oct-05	127	273	101	0	32	50	11	17	0	15	10	1	4	641
Sep-05	111	283	78	0	26	57	16	12	0	22	6	0	3	614
Aug-05	98	280	94	0	31	41	17	19	0	12	8	0	6	606
Jul-05	100	253	95	0	43	47	13	13	0	11	8	0	8	591
Jun-05	113	280	94	0	25	52	13	13	0	20	13	0	0	623
May-05	127	270	83	0	39	54	8	14	0	15	6	1	6	623
Apr-05	103	270	109	0	37	49	9	20	0	16	8	0	10	631
Mar-05	129	275	82	0	43	62	15	19	0	23	10	1	4	663
Feb-05	109	259	100	0	53	57	16	13	0	15	11	0	5	638
Jan-05	159	250	99	0	50	48	16	18	0	8	2	0	4	654
Dec-04	118	238	82	0	33	46	15	12	0	21	14	0	6	585
Nov-04	103	250	63	0	50	56	12	16	0	15	8	3	4	580
Oct-04	83	270	67	0	38	61	16	14	0	20	10	0	3	582
Sep-04	95	262	114	0	44	44	15	23	0	16	5	0	1	619
Aug-04	97	238	76	0	49	50	15	17	0	11	5	0	4	562
Jul-04	106	198	121	0	39	44	7	10	0	12	7	0	1	545
Jun-04	n/a	n/a	n/a	0	n/a	n/a	n/a	n/a	n/a	n/a	n/a	n/a	n/a	n/a
May-04	n/a	n/a	n/a	0	n/a	n/a	n/a	n/a	n/a	n/a	n/a	n/a	n/a	n/a
Apr-04	n/a	n/a	n/a	0	n/a	n/a	n/a	n/a	n/a	n/a	n/a	n/a	n/a	n/a

Definitions of Release Types

Discretionary parole-Released to parole through Parole Board discretion prior to mandatory release or sentence discharge date.

Mandatory parole-Released to parole on mandatory release date.

Mand. Repair-Reparoled on specific date set by Parole Board (includes S.B. 252 reparoles). n/a - breakout not available prior to June 2004.

Com. Supv.-Released to serve 12 months of community supervision.

Sentence discharge-Completion of sentence with no further supervision.

H.B. 1087 discharge-Completion of sentence with no further supervision, subject to earn time provisions of H.B. 95-1087.

Martin/ Cooper discharge-Completion of sentence with no further supervision, sex offender subject to Martin/Cooper Supreme Court decision.

Chgs/ Det. discharge-Completion of sentence, released to other law enforcement for pending charges or detainees.

Com. Spv. Elim discharge-Completion of sentence following reincarceration on community supervision sentence.

Probation-Released by court to probation.

Ct. Ord. Dsch.-Released by court order.

Appeal Bond-Released by court to appeal bond.

Deceased-Offender death in prison.

***Due to the decrease in community transportation services, the Department implemented a procedural change in December 2005 with regards to releasing inmates on weekends. As a result of this change, discretionary releases have increased and mandatory releases have decreased.**

COLORADO DEPARTMENT OF CORRECTIONS
ADULT INMATE RELEASES FROM PRISON
Female Population Only

Date: 4/7/2006

	Parole				Discharge					Other				Total
	Discretionary*	Mandatory*	Mand. Repar.*	Com. Supv.	Sentence	H.B. 1087	Martin/Cooper	Chgs/Det.	Com Spv. Elim	Probation	Ct. Ord. Dsch.	Appeal Bond	Deceased	
Mar-06	38	36	13	0	3	5	0	0	0	4	0	0	0	99
Feb-06	52	30	8	0	1	2	0	0	0	2	0	0	0	95
Jan-06	50	31	12	0	2	3	0	1	0	1	1	0	1	102
Dec-05	42	34	14	0	3	4	0	0	0	2	1	0	2	102
Nov-05	27	46	12	0	5	8	0	1	0	0	1	0	1	101
Oct-05	30	31	29	0	2	8	0	2	0	2	0	0	1	105
Sep-05	31	35	12	0	4	4	1	2	0	1	0	0	0	90
Aug-05	26	32	15	0	2	6	0	1	0	2	3	0	0	87
Jul-05	21	53	14	0	3	1	0	0	0	4	1	0	0	97
Jun-05	31	32	11	0	3	5	0	3	0	2	0	0	0	87
May-05	21	43	12	0	3	7	0	0	0	1	1	0	1	89
Apr-05	18	43	16	0	3	8	0	0	0	2	4	0	0	94
Mar-05	26	36	18	0	3	2	0	2	0	1	1	0	0	89
Feb-05	23	31	9	0	5	6	0	1	0	2	1	0	0	78
Jan-05	24	24	14	0	3	6	0	1	0	2	0	0	1	75
Dec-04	25	35	16	0	2	1	0	0	0	3	1	1	0	84
Nov-04	17	37	10	0	3	4	0	1	0	1	1	0	0	74
Oct-04	19	22	11	0	4	5	0	0	0	2	1	0	0	64
Sep-04	15	24	11	0	3	4	0	2	0	4	1	0	2	66
Aug-04	18	28	12	0	3	4	0	0	0	2	2	0	0	69
Jul-04	19	29	14	0	2	8	0	0	0	2	1	0	0	75
Jun-04	n/a	n/a	n/a	0	n/a	n/a	n/a	n/a	n/a	n/a	n/a	n/a	n/a	n/a
May-04	n/a	n/a	n/a	0	n/a	n/a	n/a	n/a	n/a	n/a	n/a	n/a	n/a	n/a
Apr-04	n/a	n/a	n/a	0	n/a	n/a	n/a	n/a	n/a	n/a	n/a	n/a	n/a	n/a

Definitions of Release Types

Discretionary parole-Released to parole through Parole Board discretion prior to mandatory release or sentence discharge date.

Mandatory parole-Released to parole on mandatory release date.

Mand. Repar-Reparoled on specific date set by Parole Board (includes S.B. 252 reparoles). n/a - breakout not available prior to June 2004.

Com. Supv.-Released to serve 12 months of community supervision.

Sentence discharge-Completion of sentence with no further supervision.

H.B. 1087 discharge-Completion of sentence with no further supervision, subject to earn time provisions of H.B. 95-1087.

Martin/ Cooper discharge-Completion of sentence with no further supervision, sex offender subject to Martin/Cooper Supreme Court decision.

Chgs/ Det. discharge-Completion of sentence, released to other law enforcement for pending charges or detainees.

Com. Spv. Elim discharge-Completion of sentence following reincarceration on community supervision sentence.

Probation-Released by court to probation.

Ct. Ord. Dsch.-Released by court order.

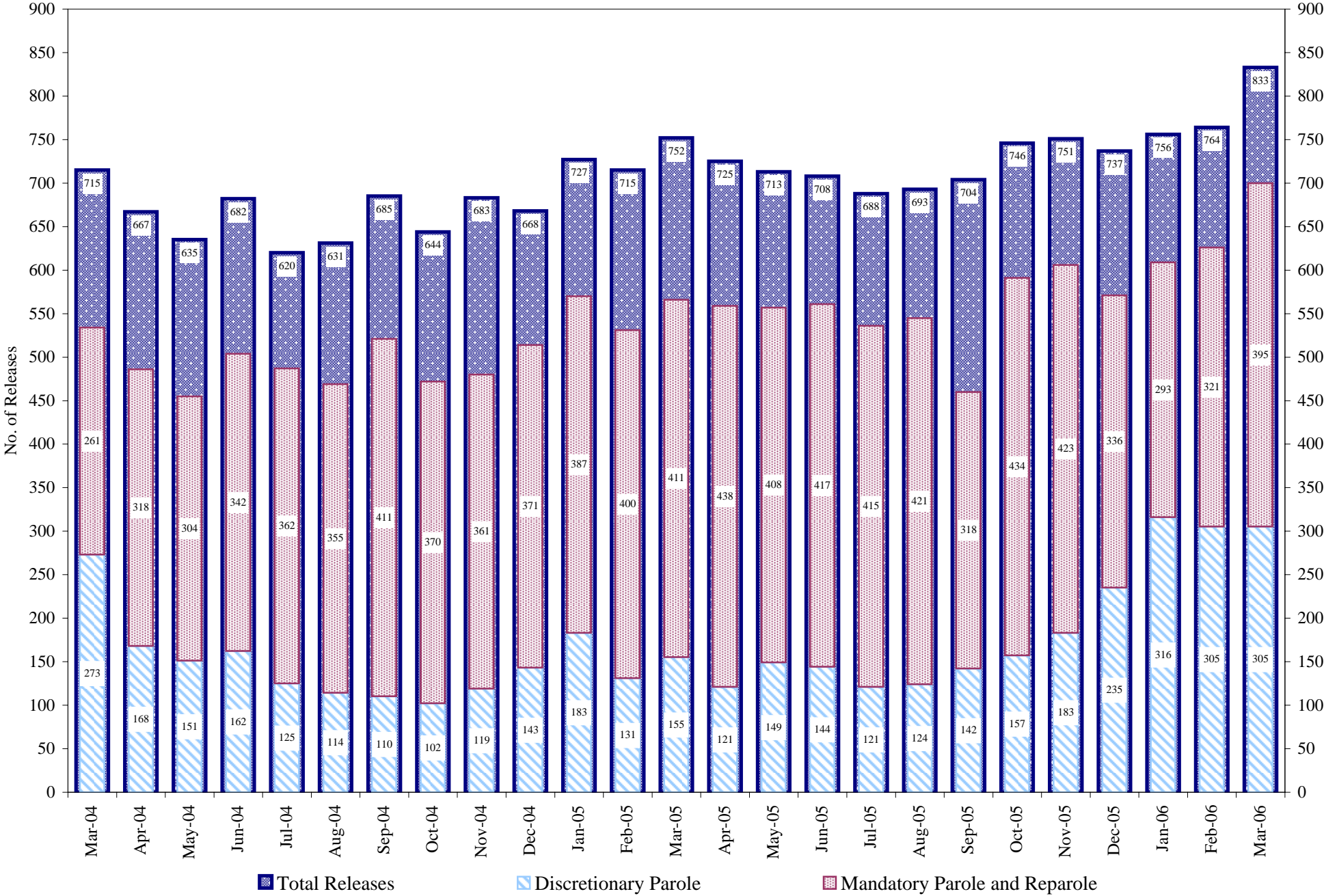
Appeal Bond-Released by court to appeal bond.

Deceased-Offender death in prison.

*Due to the decrease in community transportation services, the Department implemented a procedural change in December 2005 with regards to releasing inmates on weekends. As a result of this change, discretionary releases have increased and mandatory releases have decreased.

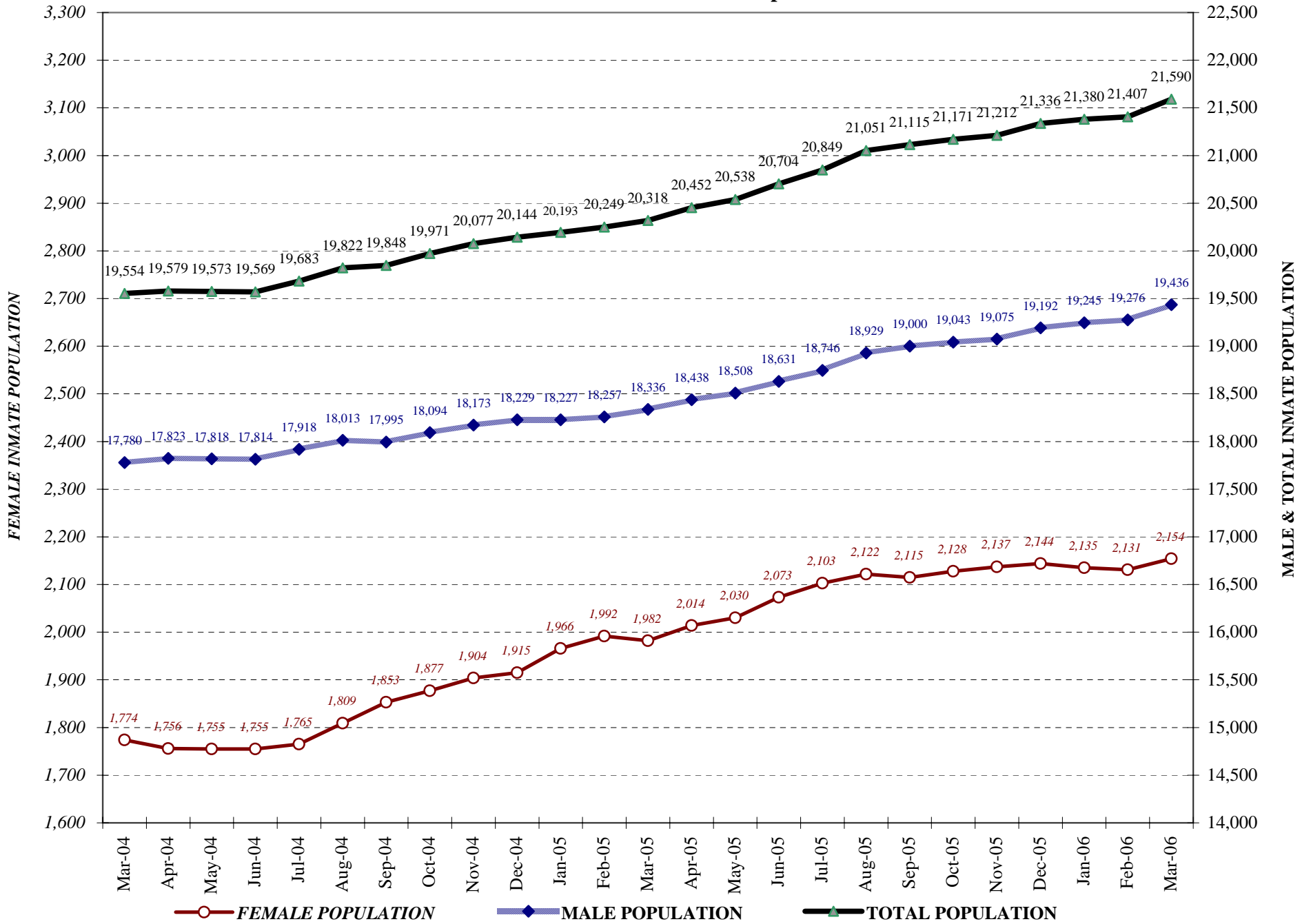
COLORADO DEPARTMENT OF CORRECTIONS

Adult Prison Releases

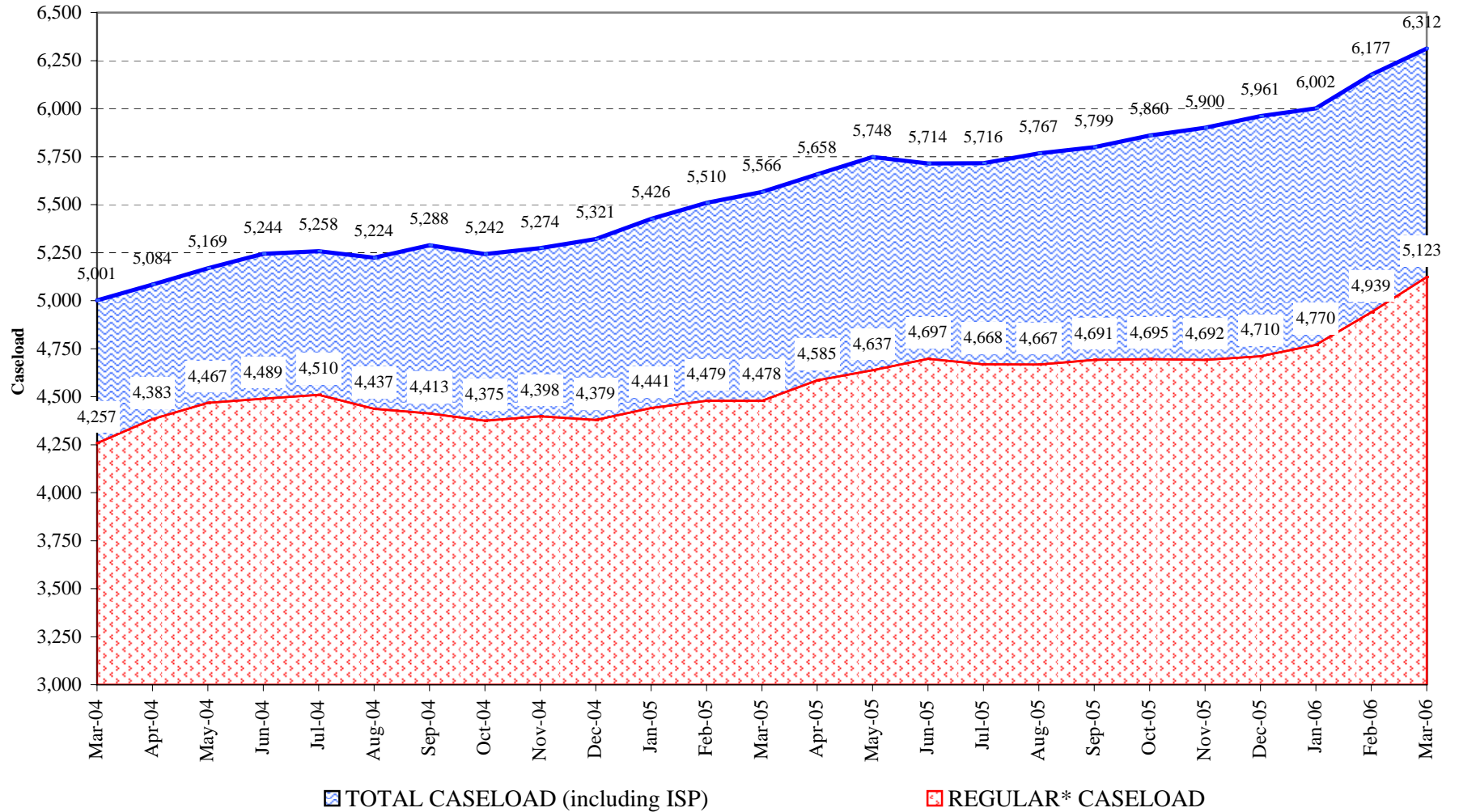


Total releases include releases to discretionary parole, mandatory parole and reparole, all types of discharges and other releases as detailed on the previous page.

COLORADO DEPARTMENT OF CORRECTIONS Adult Jurisdiction Inmate Population



COLORADO DEPARTMENT OF CORRECTIONS Parole Population



* Regular caseload includes interstate parole, but excludes out-of-state parolees and absconders.