

**COLORADO DEPARTMENT OF CORRECTIONS
MONTHLY POPULATION AND CAPACITY REPORT
AS OF FEBRUARY 28, 2006**

9-Mar-06

	01/31/06	CAPACITY CHANGES	------ 02/28/06 -----		------ 02/28/05 -----	
	OPERATIONAL CAPACITY*		OPERATIONAL CAPACITY*	ON-GRDS POPULATION	OPERATIONAL CAPACITY*	ON-GRDS POPULATION
COLO STATE PENITENTIARY	756		756	751	756	753
CENTENNIAL CORR FAC	336		336	319	320	303
STERLING CORR FAC	2,445		2,445	2,405	2,445	2,364
LIMON CORR FAC	953		953	943	953	945
ARK VALLEY CORR FAC	1,007		1,007	1,000	1,007	1,006
BUENA VISTA CORR FAC	826		826	818	826	816
BUENA VISTA MIN CTR	292		292	287	292	281
COLO TERR CORR FAC	786		786	789	786	784
FORT LYON CORR FAC	500		500	485	500	479
FREMONT CORR FAC	1,471		1,471	1,459	1,471	1,463
ARROWHEAD CORR CTR	494		494	490	494	488
FOUR MILE CORR CTR	499		499	493	499	497
PUEBLO MINIMUM CTR	256		256	249	256	248
TRINIDAD CORR FAC	484		484	478	484	473
S.T.U. at Y.O.S.	30		30	26	30	16
SKYLINE CORR CTR	249		249	249	249	239
COLORADO CORR CTR	150		150	136	150	134
DELTA CORR CTR	484		484	464	484	462
RIFLE CORR CTR	192		192	192	192	188
COLO CORR ALT PROGRAM	100		100	98	100	96
COLO WOMEN'S CORR FAC	224		224	223	224	215
DENVER WOMEN'S CORR FAC	900		900	879	900	885
DENVER REC DIAG CTR	480		480	452	480	474
SAN CARLOS CORR FAC	255		255	252	255	238
SUBTOTAL	14,169	0	14,169	13,937	14,153	13,847
CONTRACTS:						
BENT COUNTY CORR CTR	724		724	681	724	675
HUERFANO COUNTY CORR CTR	774		774	737	778	693
CROWLEY COUNTY CORR FAC	1,754		1,754	1,175	1,185	587
KIT CARSON COUNTY CORR FAC	824		824	737	820	703
TALLAHATCHIE MS CORR FAC	0		0	0	121	128
CHEYENNE MTN REENTRY CTR	500		500	387	0	0
BRUSH CORR FAC	270		270	229	75	65
OFF-GROUNDS POPULATION:				245		214
ESCAPEES/WALKAWAYS				268		229
REVOCATIONS-JAIL				0		0
JAIL BACKLOG:						
BACKLOG LESS THAN 72 HOURS			104		97	
BACKLOG GREATER THAN 72 HOURS (FISCAL YTD AVE = 465)			331		625	
BACKLOG-PAROLEES AWAITING TRANSFER			95		135	
TOTAL JAIL BACKLOG				530		857
COUNTY JAIL CONTRACTS				31		17
COMMUNITY CORRECTIONS						
COMMUNITY						
RESIDENTIAL	1,236	19	1,255	1,255	1,133	1,133
PAROLE REVOCATIONS	0	0	0	0	4	4
REVOKED-RET TO CUST	187	27	214	214	173	173
NON-RESIDENTIAL	59	9	68	68	62	62
REGRESSIONS	35	0	35	35	30	30
TOTAL COMMUNITY	1,517	55	1,572	1,572	1,402	1,402
ISP						
RESIDENTIAL	836	-11	825	825	778	778
NON-RESIDENTIAL	40	-3	37	37	44	44
REGRESSIONS	14	2	16	16	10	10
TOTAL ISP	890	-12	878	878	832	832
TOTAL COMM. CORRECTIONS	2,407	43	2,450	2,450	2,234	2,234
MALE POPULATION			19,276		18,257	
FEMALE POPULATION			2,131		1,992	
TOTAL INMATE JURISDICTIONAL POPULATION				21,407		20,249

*OPERATIONAL CAPACITY INCLUDES ALL BEDS AVAILABLE FOR USE, INCLUDING MANAGEMENT CONTROL UNITS, BU EXCLUDES EMERGENCY DOUBLE BUNKING

**COLORADO DEPARTMENT OF CORRECTIONS
MONTHLY POPULATION AND CAPACITY REPORT
AS OF FEBRUARY 28, 2006**

9-Mar-06

CURRENT MONTH CHANGES IN CAPACITY:

NONE

NET MONTHLY GROWTH RATE:

CURRENT MONTH

27

FISCAL YEAR-TO-DATE AVERAGE

88

YOUTHFUL OFFENDER SYSTEM

	----- 02/28/06 -----				02/28/05
	DRDC	PUEBLO	CONTRACT FACILITIES	COMM. CORR.	TOTAL POPULATION
INTAKE/IDO	0	9			9
RFP/REMEDICATION	0	12			12
PHASE I	0	138	0		138
PHASE II	0	15			15
PHASE III		0		40	40
OFF GROUNDS/BACKLOG					2
TOTAL Y.O.S. POPULATION	0	174	0	40	216
					229

	CURRENT MONTH	FISCAL YR. TO DATE
YOS ADMISSIONS	2	34
YOS RELEASES:		
COMPLETION OF SENTENCE	3	27
JUDICIAL RELEASE TO PROB/CT ORD DISCHG	0	1
JUDICIAL TRANSFER TO DOC	0	0
TERMINATION/FAILURE	4	12
DECEASED	0	1
TOTAL RELEASES	7	41

PAROLE CASELOAD

	----- 02/28/06 -----			----- 01/31/06 -----		----- 02/28/05 -----	
	DOMESTIC	INTERST PAR/PROB	TOTAL CASELOAD	DOMESTIC	TOTAL CASELOAD	DOMESTIC	TOTAL CASELOAD
DENVER REGION							
REGULAR	1,802	106	1,908	1,739	1,843	1,629	1,742
ISP	615		615	622	622	456	456
SUBTOTAL	2,417	106	2,523	2,361	2,465	2,085	2,198
NORTHEAST REGION							
REGULAR	1,265	37	1,302	1,203	1,238	1,144	1,191
ISP	325		325	299	299	253	253
SUBTOTAL	1,590	37	1,627	1,502	1,537	1,397	1,444
SOUTHEAST REGION							
REGULAR	1,105	69	1,174	1,098	1,161	958	1,029
ISP	210		210	214	214	225	225
SUBTOTAL	1,315	69	1,384	1,312	1,375	1,183	1,254
WESTERN REGION							
REGULAR	514	41	555	489	528	467	517
ISP	88		88	97	97	97	97
SUBTOTAL	602	41	643	586	625	564	614
TOTAL CASELOAD							
REGULAR	4,686	253	4,939	4,529	4,770	4,198	4,479
ISP	1,238		1,238	1,232	1,232	1,031	1,031
TOTAL	5,924	253	6,177	5,761	6,002	5,229	5,510
ADDITIONAL CASELOAD:							
OUT-OF-STATE PAROLEES			1,622		1,606		1,438
PAROLEE ABSCONDERS			610		642		590

COLORADO DEPARTMENT OF CORRECTIONS
MONTHLY POPULATION AND CAPACITY REPORT
AS OF FEBRUARY 28, 2006

9-Mar-06

	02/28/2006 POPULATION			----- FINAL CUSTODY DESIGNATION* -----						
	On-Grds.	Off-Grds.	TOTAL	Uncls.	Ad.Seg	Close	Medium	Min.-Res.	Minimum	
MALE POPULATION										
COLO STATE PENITENTIARY	751	4	755				3		2	
CENTENNIAL CORR FAC	319	1	320			139	166	10	1	4
STERLING CORR FAC	2,405	23	2,428			222	713	536	563	394
LIMON CORR FAC	943	13	956			16	680	183	56	21
ARK VALLEY CORR FAC	1,000	12	1,012			3	457	302	176	74
BUENA VISTA CORR FAC	818	15	833			15	298	313	141	66
BUENA VISTA MIN CTR	287	3	290					2	214	74
COLO TERR CORR FAC	788	7	795			12	208	278	188	109
FORT LYON CORR FAC	485	11	496				25	262	141	68
FREMONT CORR FAC	1,459	16	1,475			21	208	442	525	279
ARROWHEAD CORR CTR	490	6	496					4	313	179
FOUR MILE CORR CTR	493	7	500					7	334	159
TRINIDAD CORR FAC	478	5	483				2	9	407	65
S.T.U. at Y.O.S.	26	2	28					13	15	0
SKYLINE CORR CTR	249	0	249						5	244
COLORADO CORR CTR	136	0	136						7	129
DELTA CORR CTR	464	8	472					2		470
RIFLE CORR CTR	192	1	193							193
COLO CORR ALT PROGRAM	96	6	102					1	7	94
DENVER REC DIAG CTR	450	12	462	131	11	54	111	113		42
SAN CARLOS CORR FAC	252	3	255		24	93	56	41		41
CONTRACTS:										
BENT COUNTY CORR CTR	681	10	691			6	343	200		142
HUERFANO COUNTY CORR CTR	737	14	751		2	22	434	180		113
CROWLEY COUNTY CORR FAC	1,175	27	1,202		3	10	708	306		175
KIT CARSON COUNTY CORR FAC	737	13	750			15	415	205		115
CHEYENNE MTN REENTRY CTR	387	1	388			1	109	167		111
COMMUNITY/ISP	1,686	86	1,772			7	26	28		1,711
TOTAL MALE POPULATION	17,984	306	18,290	131	1,218	2,965	4,569	4,333	5,074	
PERCENT OF TOTAL				0.7%	6.7%	16.2%	25.0%	23.7%	27.7%	
FEMALE POPULATION										
COLO WOMEN'S CORR FAC	223	1	224			61	88	40		35
DENVER WOMEN'S CORR FAC	879	10	889	25	25	108	230	299		202
PUEBLO MINIMUM CTR	249	8	257				8	154		95
COLO CORR ALT PROGRAM	2	0	2							2
SAN CARLOS CORR FAC	0	0	0							
DENVER REC DIAG CTR INF	2	0	2						1	1
COLO TERR CORR FAC INF.	1	0	1						1	
CONTRACTS:										
BRUSH CORR FAC	229	6	235			2	111	82		40
COMMUNITY/ISP	394	19	413			2	7	15		389
TOTAL FEMALE POPULATION	1,979	44	2,023	25	25	173	444	592	764	
PERCENT OF TOTAL				1.2%	1.2%	8.6%	21.9%	29.3%	37.8%	

*Final custody designations for jail backlog and contracts, fugitive, community regressions, and parole revocations are not reported.

COLORADO DEPARTMENT OF CORRECTIONS
ADULT INMATE JURISDICTIONAL POPULATION (1)

DATE: 3/9/2006

DATE	MALE POPULATION			FEMALE POPULATION			TOTAL POPULATION		
	Male Population	Net Change	Fiscal Y-T-D Average	Female Population	Net Change	Fiscal Y-T-D Average	Total Population	Net Change	Fiscal Y-T-D Average
02-28-06	19,276	31	81	2,131	-4	7	21,407	27	88
01-31-06	19,245	53		2,135	-9		21,380	44	
12-31-05	19,192	117		2,144	7		21,336	124	
11-30-05	19,075	32		2,137	9		21,212	41	
10-31-05	19,043	43		2,128	13		21,171	56	
09-30-05	19,000	71		2,115	-7		21,115	64	
08-31-05	18,929	183		2,122	19		21,051	202	
07-31-05	18,746	115		2,103	30		20,849	145	
06-30-05	18,631	123		2,073	43		20,704	166	
05-31-05	18,508	70		2,030	16		20,538	86	
04-30-05	18,438	102		2,014	32		20,452	134	
03-31-05	18,336	79		1,982	-10		20,318	69	
02-28-05	18,257	30		1,992	26		20,249	56	
01-31-05	18,227	-2		1,966	51		20,193	49	
12-31-04	18,229	56	68	1,915	11	27	20,144	67	95
11-30-04	18,173	79		1,904	27		20,077	106	
10-31-04	18,094	99		1,877	24		19,971	123	
09-30-04	17,995	-18		1,853	44		19,848	26	
08-31-04	18,013	95		1,809	44		19,822	139	
07-31-04	17,918	104		1,765	10		19,683	114	
06-30-04	17,814	-4		1,755	0		19,569	-4	
05-31-04	17,818	-5		1,755	-1		19,573	-6	
04-30-04	17,823	43		1,756	-18		19,579	25	
03-31-04	17,780	42		1,774	11		19,554	53	
02-29-04	17,738	2		1,763	4		19,501	6	
01-31-04	17,736	32		1,759	9		19,495	41	
12-31-03	17,704	110	49	1,750	26	11	19,454	136	60
11-30-03	17,594	9		1,724	16		19,318	25	
10-31-03	17,585	82		1,708	12		19,293	94	
09-30-03	17,503	96		1,696	23		19,199	119	
08-31-03	17,407	89		1,673	23		19,080	112	
07-31-03	17,318	92		1,650	30		18,968	122	
06-30-03	17,226		57	1,620		10	18,846		67
06-30-02	16,539		87	1,506		14	18,045		101
06-30-01	15,493		63	1,340		6	16,833		70
06-30-00	14,733		99	1,266		7	15,999		106
06-30-99	13,547		75	1,179		14	14,726		89
06-30-98	12,647		81	1,016		9	13,663		89
06-30-97	11,681		73	909		12	12,590		84
06-30-96	10,808			769			11,577		

(1) Adult inmate jurisdictional population includes on-grounds, off-grounds, out-of-state, escapees, and jail backlog and excludes offenders sentenced to the Youthful Offender System (Y.O.S.).

COLORADO DEPARTMENT OF CORRECTIONS
ADULT INMATE RELEASES FROM PRISON
TOTAL Population (Male and Female)

(Revised) Date: 4/10/2007

	Parole				Discharge					Other				Total
	Discretionary*	Mandatory*	Mand. Repar.*	Com. Supv.	Sentence	H.B. 1087	Martin/Cooper	Chgs/Det.	Com Spv. Elim	Probation	Ct. Ord. Dsch.	Appeal Bond	Deceased	
Feb-06	305	250	71	0	34	39	13	10	0	27	14	0	1	764
Jan-06	316	218	75	0	45	51	11	14	0	13	6	0	7	756
Dec-05	235	238	98	0	51	47	15	17	0	18	12	0	6	737
Nov-05	183	297	126	0	37	55	7	13	0	10	18	0	5	751
Oct-05	157	304	130	0	34	58	11	19	0	17	10	1	5	746
Sep-05	142	318	90	0	30	61	17	14	0	23	6	0	3	704
Aug-05	124	312	109	0	33	47	17	20	0	14	11	0	6	693
Jul-05	121	306	109	0	46	48	13	13	0	15	9	0	8	688
Jun-05	144	312	105	0	28	57	13	16	0	22	13	0	0	710
May-05	148	313	95	0	42	61	8	14	0	16	7	1	7	712
Apr-05	121	313	125	0	40	57	9	20	0	18	12	0	10	725
Mar-05	155	311	100	0	46	64	15	21	0	24	11	1	4	752
Feb-05	132	290	109	0	58	63	16	14	0	17	12	0	5	716
Jan-05	183	274	113	0	53	54	16	19	0	10	2	0	5	729
Dec-04	143	273	98	0	35	47	15	12	0	24	15	1	6	669
Nov-04	120	287	73	0	53	60	12	17	0	16	9	3	4	654
Oct-04	102	292	78	0	42	66	16	14	0	22	11	0	3	646
Sep-04	110	286	125	0	47	48	15	25	0	20	6	0	3	685
Aug-04	115	266	88	0	52	54	15	17	0	13	7	0	4	631
Jul-04	125	227	135	0	41	52	7	10	0	14	8	0	1	620
Jun-04	161	282	61	0	61	55	17	20	0	9	13	0	3	682
May-04	151	304	n/a	0	42	82	18	13	0	24	0	0	1	635
Apr-04	168	318	n/a	0	50	64	17	12	1	16	14	0	7	667
Mar-04	273	261	n/a	0	47	63	14	25	4	14	10	1	3	715

Definitions of Release Types

Discretionary parole-Released to parole through Parole Board discretion prior to mandatory release or sentence discharge date.

Mandatory parole-Released to parole on mandatory release date.

Mand. Repar-Reparoled on specific date set by Parole Board (includes S.B. 252 reparoles). n/a - breakout not available prior to June 2004.

Com. Supv.-Released to serve 12 months of community supervision.

Sentence discharge-Completion of sentence with no further supervision.

H.B. 1087 discharge-Completion of sentence with no further supervision, subject to earn time provisions of H.B. 95-1087.

Martin/ Cooper discharge-Completion of sentence with no further supervision, sex offender subject to Martin/Cooper Supreme Court decision.

Chgs/ Det. discharge-Completion of sentence, released to other law enforcement for pending charges or detainees.

Com. Spv. Elim discharge-Completion of sentence following reincarceration on community supervision sentence.

Probation-Released by court to probation.

Ct. Ord. Dsch.-Released by court order.

Appeal Bond-Released by court to appeal bond.

Deceased-Offender death in prison.

*Due to the decrease in community transportation services, the Department implemented a procedural change in December 2005 with regards to releasing inmates on weekends. As a result of this change, discretionary releases have increased and mandatory releases have decreased.

COLORADO DEPARTMENT OF CORRECTIONS
ADULT INMATE RELEASES FROM PRISON
Male Population Only

(Revised) Date: 4/10/2007

	Parole				Discharge					Other				Total
	Discretionary*	Mandatory*	Mand. Repar.*	Com. Supv.	Sentence	H.B. 1087	Martin/Cooper	Chgs/Det.	Com Spv. Elim	Probation	Ct. Ord. Dsch.	Appeal Bond	Deceased	
Feb-06	253	220	63	0	33	37	13	10	0	25	14	0	1	669
Jan-06	266	187	63	0	43	48	11	13	0	12	5	0	6	654
Dec-05	193	204	84	0	48	43	15	17	0	16	11	0	4	635
Nov-05	156	251	114	0	32	47	7	12	0	10	17	0	4	650
Oct-05	127	273	101	0	32	50	11	17	0	15	10	1	4	641
Sep-05	111	283	78	0	26	57	16	12	0	22	6	0	3	614
Aug-05	98	280	94	0	31	41	17	19	0	12	8	0	6	606
Jul-05	100	253	95	0	43	47	13	13	0	11	8	0	8	591
Jun-05	113	280	94	0	25	52	13	13	0	20	13	0	0	623
May-05	127	270	83	0	39	54	8	14	0	15	6	1	6	623
Apr-05	103	270	109	0	37	49	9	20	0	16	8	0	10	631
Mar-05	129	275	82	0	43	62	15	19	0	23	10	1	4	663
Feb-05	109	259	100	0	53	57	16	13	0	15	11	0	5	638
Jan-05	159	250	99	0	50	48	16	18	0	8	2	0	4	654
Dec-04	118	238	82	0	33	46	15	12	0	21	14	0	6	585
Nov-04	103	250	63	0	50	56	12	16	0	15	8	3	4	580
Oct-04	83	270	67	0	38	61	16	14	0	20	10	0	3	582
Sep-04	95	262	114	0	44	44	15	23	0	16	5	0	1	619
Aug-04	97	238	76	0	49	50	15	17	0	11	5	0	4	562
Jul-04	106	198	121	0	39	44	7	10	0	12	7	0	1	545
Jun-04	n/a	n/a	n/a	0	n/a	n/a	n/a	n/a	n/a	n/a	n/a	n/a	n/a	n/a
May-04	n/a	n/a	n/a	0	n/a	n/a	n/a	n/a	n/a	n/a	n/a	n/a	n/a	n/a
Apr-04	n/a	n/a	n/a	0	n/a	n/a	n/a	n/a	n/a	n/a	n/a	n/a	n/a	n/a
Mar-04	n/a	n/a	n/a	0	n/a	n/a	n/a	n/a	n/a	n/a	n/a	n/a	n/a	n/a

Definitions of Release Types

Discretionary parole-Released to parole through Parole Board discretion prior to mandatory release or sentence discharge date.

Mandatory parole-Released to parole on mandatory release date.

Mand. Repar-Reparoled on specific date set by Parole Board (includes S.B. 252 reparoles). n/a - breakout not available prior to June 2004.

Com. Supv.-Released to serve 12 months of community supervision.

Sentence discharge-Completion of sentence with no further supervision.

H.B. 1087 discharge-Completion of sentence with no further supervision, subject to earn time provisions of H.B. 95-1087.

Martin/ Cooper discharge-Completion of sentence with no further supervision, sex offender subject to Martin/Cooper Supreme Court decision.

Chgs/ Det. discharge-Completion of sentence, released to other law enforcement for pending charges or detainees.

Com. Spv. Elim discharge-Completion of sentence following reincarceration on community supervision sentence.

Probation-Released by court to probation.

Ct. Ord. Dsch.-Released by court order.

Appeal Bond-Released by court to appeal bond.

Deceased-Offender death in prison.

*Due to the decrease in community transportation services, the Department implemented a procedural change in December 2005 with regards to releasing inmates on weekends. As a result of this change, discretionary releases have increased and mandatory releases have decreased.

COLORADO DEPARTMENT OF CORRECTIONS
ADULT INMATE RELEASES FROM PRISON
Female Population Only

Date: 3/9/2006

	Parole				Discharge					Other				Total
	Discretionary*	Mandatory*	Mand. Repar.*	Com. Supv.	Sentence	H.B. 1087	Martin/Cooper	Chgs/Det.	Com Spv. Elim	Probation	Ct. Ord. Dsch.	Appeal Bond	Deceased	
Feb-06	52	30	8	0	1	2	0	0	0	2	0	0	0	95
Jan-06	50	31	12	0	2	3	0	1	0	1	1	0	1	102
Dec-05	42	34	14	0	3	4	0	0	0	2	1	0	2	102
Nov-05	27	46	12	0	5	8	0	1	0	0	1	0	1	101
Oct-05	30	31	29	0	2	8	0	2	0	2	0	0	1	105
Sep-05	31	35	12	0	4	4	1	2	0	1	0	0	0	90
Aug-05	26	32	15	0	2	6	0	1	0	2	3	0	0	87
Jul-05	21	53	14	0	3	1	0	0	0	4	1	0	0	97
Jun-05	31	32	11	0	3	5	0	3	0	2	0	0	0	87
May-05	21	43	12	0	3	7	0	0	0	1	1	0	1	89
Apr-05	18	43	16	0	3	8	0	0	0	2	4	0	0	94
Mar-05	26	36	18	0	3	2	0	2	0	1	1	0	0	89
Feb-05	23	31	9	0	5	6	0	1	0	2	1	0	0	78
Jan-05	24	24	14	0	3	6	0	1	0	2	0	0	1	75
Dec-04	25	35	16	0	2	1	0	0	0	3	1	1	0	84
Nov-04	17	37	10	0	3	4	0	1	0	1	1	0	0	74
Oct-04	19	22	11	0	4	5	0	0	0	2	1	0	0	64
Sep-04	15	24	11	0	3	4	0	2	0	4	1	0	2	66
Aug-04	18	28	12	0	3	4	0	0	0	2	2	0	0	69
Jul-04	19	29	14	0	2	8	0	0	0	2	1	0	0	75
Jun-04	n/a	n/a	n/a	0	n/a	n/a	n/a	n/a	n/a	n/a	n/a	n/a	n/a	n/a
May-04	n/a	n/a	n/a	0	n/a	n/a	n/a	n/a	n/a	n/a	n/a	n/a	n/a	n/a
Apr-04	n/a	n/a	n/a	0	n/a	n/a	n/a	n/a	n/a	n/a	n/a	n/a	n/a	n/a
Mar-04	n/a	n/a	n/a	0	n/a	n/a	n/a	n/a	n/a	n/a	n/a	n/a	n/a	n/a

Definitions of Release Types

Discretionary parole-Released to parole through Parole Board discretion prior to mandatory release or sentence discharge date.

Mandatory parole-Released to parole on mandatory release date.

Mand. Repar-Reparoled on specific date set by Parole Board (includes S.B. 252 reparoles). n/a - breakout not available prior to June 2004.

Com. Supv.-Released to serve 12 months of community supervision.

Sentence discharge-Completion of sentence with no further supervision.

H.B. 1087 discharge-Completion of sentence with no further supervision, subject to earn time provisions of H.B. 95-1087.

Martin/ Cooper discharge-Completion of sentence with no further supervision, sex offender subject to Martin/Cooper Supreme Court decision.

Chgs/ Det. discharge-Completion of sentence, released to other law enforcement for pending charges or detainees.

Com. Spv. Elim discharge-Completion of sentence following reincarceration on community supervision sentence.

Probation-Released by court to probation.

Ct. Ord. Dsch.-Released by court order.

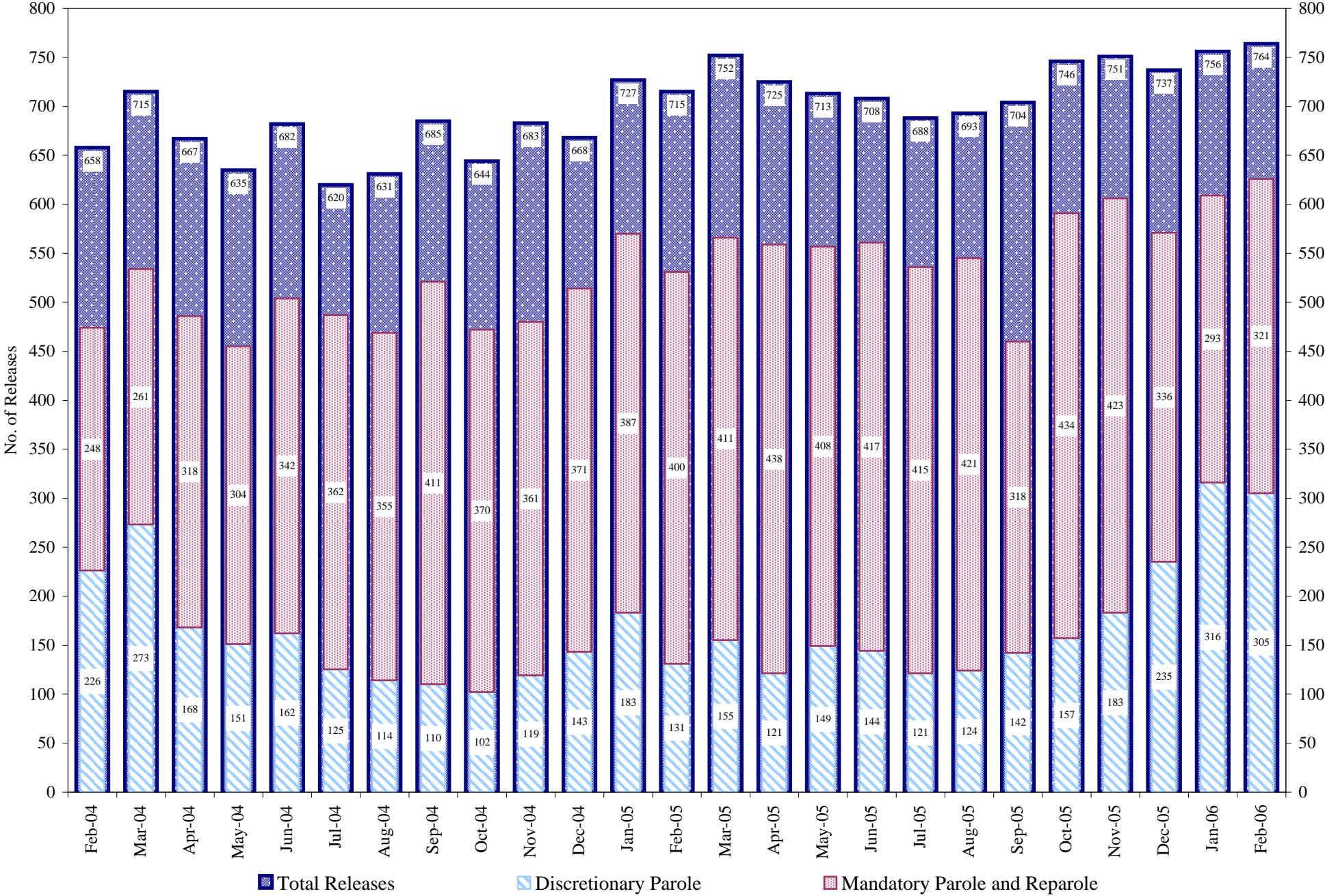
Appeal Bond-Released by court to appeal bond.

Deceased-Offender death in prison.

*Due to the decrease in community transportation services, the Department implemented a procedural change in December 2005 with regards to releasing inmates on weekends. As a result of this change, discretionary releases have increased and mandatory releases have decreased.

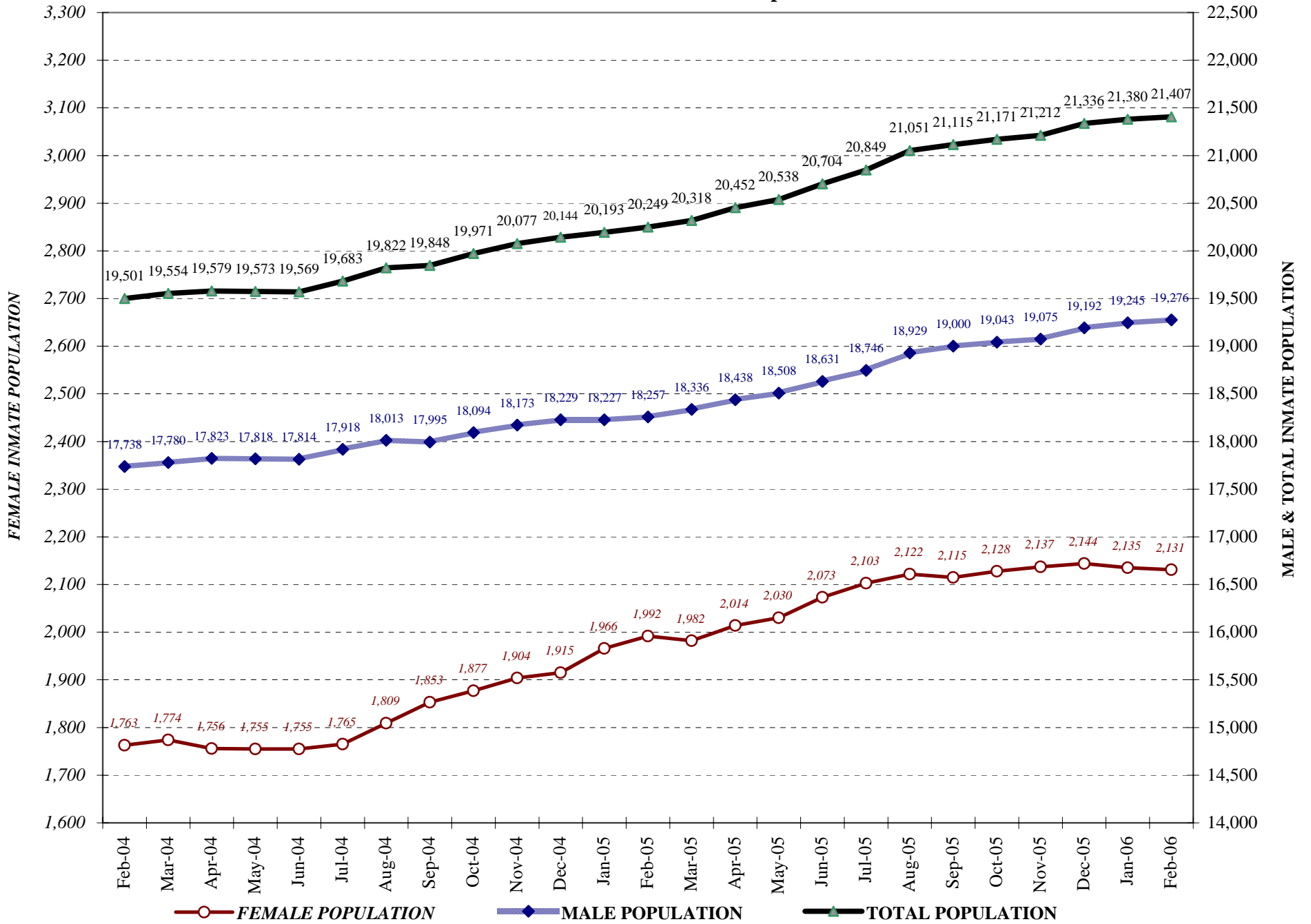
COLORADO DEPARTMENT OF CORRECTIONS

Adult Prison Releases



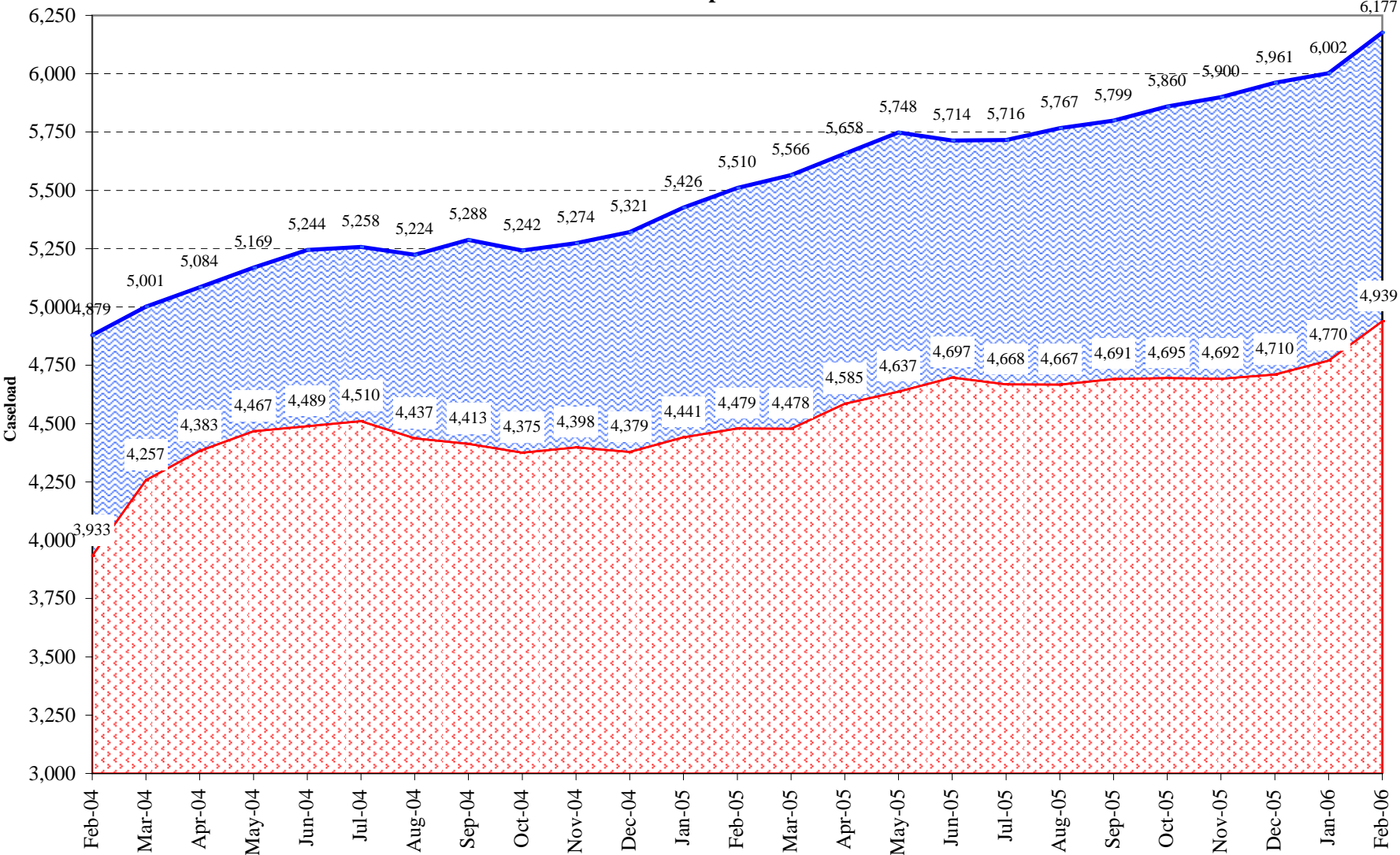
Total releases include releases to discretionary parole, mandatory parole and reparole, all types of discharges and other releases as detailed on the previous page.

COLORADO DEPARTMENT OF CORRECTIONS Adult Jurisdiction Inmate Population



COLORADO DEPARTMENT OF CORRECTIONS

Parole Population



■ TOTAL CASELOAD (including ISP)

■ REGULAR* CASELOAD