

**COLORADO DEPARTMENT OF CORRECTIONS
MONTHLY POPULATION AND CAPACITY REPORT
AS OF JANUARY 31, 2006**

7-Feb-06

	12/31/05	CAPACITY CHANGES	------ 01/31/06 -----		------ 01/31/05 -----	
	OPERATIONAL CAPACITY*		OPERATIONAL CAPACITY*	ON-GRDS POPULATION	OPERATIONAL CAPACITY*	ON-GRDS POPULATION
COLO STATE PENITENTIARY	756		756	751	756	753
CENTENNIAL CORR FAC	320	16	336	328	320	306
STERLING CORR FAC	2,445		2,445	2,392	2,445	2,385
LIMON CORR FAC	953		953	947	953	938
ARK VALLEY CORR FAC	1,007		1,007	1,004	1,007	1,000
BUENA VISTA CORR FAC	826		826	823	826	814
BUENA VISTA MIN CTR	292		292	288	292	284
COLO TERR CORR FAC	786		786	809	786	780
FORT LYON CORR FAC	500		500	495	500	491
FREMONT CORR FAC	1,471		1,471	1,452	1,471	1,459
ARROWHEAD CORR CTR	494		494	490	494	487
FOUR MILE CORR CTR	499		499	495	499	495
PUEBLO MINIMUM CTR	256		256	247	256	252
TRINIDAD CORR FAC	484		484	475	484	471
S.T.U. at Y.O.S.	30		30	30	30	22
SKYLINE CORR CTR	249		249	239	249	244
COLORADO CORR CTR	150		150	134	150	130
DELTA CORR CTR	484		484	479	484	465
RIFLE CORR CTR	192		192	191	192	185
COLO CORR ALT PROGRAM	100		100	97	100	93
COLO WOMEN'S CORR FAC	224		224	224	224	220
DENVER WOMEN'S CORR FAC	900		900	883	900	887
DENVER REC DIAG CTR	480		480	482	480	497
SAN CARLOS CORR FAC	255		255	246	255	244
SUBTOTAL	14,153	16	14,169	14,001	14,153	13,902
CONTRACTS:						
BENT COUNTY CORR CTR	724		724	692	724	644
HUERFANO COUNTY CORR CTR	774		774	726	778	700
CROWLEY COUNTY CORR FAC	1,754		1,754	1,199	1,185	551
KIT CARSON COUNTY CORR FAC	824		824	743	820	700
TALLAHATCHIE MS CORR FAC	0		0	0	121	129
CHEYENNE MTN REENTRY CTR	500		500	391	0	0
BRUSH CORR FAC	270		270	259	75	78
OFF-GROUNDS POPULATION:				199		219
ESCAPEES/WALKAWAYS				267		246
REVOCATIONS-JAIL				0		0
JAIL BACKLOG:						
BACKLOG LESS THAN 72 HOURS			158		107	
BACKLOG GREATER THAN 72 HOURS (FISCAL YTD AVE = 471)			218		535	
BACKLOG-PAROLEES AWAITING TRANSFER			81		179	
TOTAL JAIL BACKLOG				457		821
COUNTY JAIL CONTRACTS				39		7
COMMUNITY CORRECTIONS						
COMMUNITY						
RESIDENTIAL	1,246	-10	1,236	1,236	1,119	1,119
PAROLE REVOCATIONS	0	0	0	0	5	5
REVOKED-RET TO CUST	174	13	187	187	154	154
NON-RESIDENTIAL	59	0	59	59	58	58
REGRESSIONS	44	-9	35	35	52	52
TOTAL COMMUNITY	1,523	-6	1,517	1,517	1,388	1,388
ISP						
RESIDENTIAL	845	-9	836	836	759	759
NON-RESIDENTIAL	44	-4	40	40	40	40
REGRESSIONS	12	2	14	14	9	9
TOTAL ISP	901	-11	890	890	808	808
TOTAL COMM. CORRECTIONS	2,424	-17	2,407	2,407	2,196	2,196
MALE POPULATION			19,245		18,227	
FEMALE POPULATION			2,135		1,966	
TOTAL INMATE JURISDICTIONAL POPULATION				21,380		20,193

*OPERATIONAL CAPACITY INCLUDES ALL BEDS AVAILABLE FOR USE, INCLUDING MANAGEMENT CONTROL UNITS, BUT EXCLUDES EMERGENCY DOUBLE BUNKING

COLORADO DEPARTMENT OF CORRECTIONS
MONTHLY POPULATION AND CAPACITY REPORT
AS OF JANUARY 31, 2006

7-Feb-06

CURRENT MONTH CHANGES IN CAPACITY:

Aug-06	CENTENNIAL CORR FAC	REMODEL COMPLETE	16
--------	---------------------	------------------	----

NET MONTHLY GROWTH RATE:

CURRENT MONTH	44
FISCAL YEAR-TO-DATE AVERAGE	97

YOUTHFUL OFFENDER SYSTEM

	----- 01/31/06 -----				01/31/05
	DRDC	PUEBLO	CONTRACT FACILITIES	COMM. CORR.	TOTAL POPULATION
INTAKE/IDO	0	6			10
RFP/REMEDATION	0	10			10
PHASE I	0	142	0		144
PHASE II	0	13			14
PHASE III		0		39	43
OFF GROUNDS/BACKLOG					7
TOTAL Y.O.S. POPULATION	0	171	0	39	228

	CURRENT MONTH	FISCAL YR. TO DATE
YOS ADMISSIONS	8	32
YOS RELEASES:		
COMPLETION OF SENTENCE	5	24
JUDICIAL RELEASE TO PROB/CT ORD DISCHG	0	1
JUDICIAL TRANSFER TO DOC	0	0
TERMINATION/FAILURE	1	8
DECEASED	0	1
TOTAL RELEASES	6	34

PAROLE CASELOAD

	----- 01/31/06 -----			----- 12/31/05 -----		----- 01/31/05 -----	
	DOMESTIC	INTERST PAR/PROB	TOTAL CASELOAD	DOMESTIC	TOTAL CASELOAD	DOMESTIC	TOTAL CASELOAD
DENVER REGION							
REGULAR	1,739	104	1,843	1,736	1,841	1,611	1,729
ISP	622		622	613	613	442	442
SUBTOTAL	2,361	104	2,465	2,349	2,454	2,053	2,171
NORTHEAST REGION							
REGULAR	1,203	35	1,238	1,192	1,229	1,131	1,179
ISP	299		299	298	298	240	240
SUBTOTAL	1,502	35	1,537	1,490	1,527	1,371	1,419
SOUTHEAST REGION							
REGULAR	1,098	63	1,161	1,047	1,110	952	1,023
ISP	214		214	241	241	212	212
SUBTOTAL	1,312	63	1,375	1,288	1,351	1,164	1,235
WESTERN REGION							
REGULAR	489	39	528	487	530	461	510
ISP	97		97	99	99	91	91
SUBTOTAL	586	39	625	586	629	552	601
TOTAL CASELOAD							
REGULAR	4,529	241	4,770	4,462	4,710	4,155	4,441
ISP	1,232		1,232	1,251	1,251	985	985
TOTAL	5,761	241	6,002	5,713	5,961	5,140	5,426
ADDITIONAL CASELOAD:							
OUT-OF-STATE PAROLEES			1,606		1,583		1,456
PAROLEE ABSCONDERS			642		652		568

COLORADO DEPARTMENT OF CORRECTIONS
MONTHLY POPULATION AND CAPACITY REPORT
AS OF JANUARY 31, 2006

7-Feb-06

	01/31/2006 POPULATION			----- FINAL CUSTODY DESIGNATION* -----					
	On-Grds.	Off-Grds.	TOTAL	Uncls.	Ad.Seg	Close	Medium	Min.-Res.	Minimum
MALE POPULATION									
COLO STATE PENITENTIARY	751	4	755		755				
CENTENNIAL CORR FAC	328	4	332		137	165	15	5	10
STERLING CORR FAC	2,392	21	2,413		226	702	526	581	378
LIMON CORR FAC	947	12	959		14	674	192	58	21
ARK VALLEY CORR FAC	1,004	10	1,014		5	446	314	174	75
BUENA VISTA CORR FAC	823	11	834		11	295	307	152	69
BUENA VISTA MIN CTR	288	5	293			2	2	217	72
COLO TERR CORR FAC	809	8	817		13	232	279	180	113
FORT LYON CORR FAC	495	5	500		1	36	248	144	71
FREMONT CORR FAC	1,452	15	1,467		21	212	451	516	267
ARROWHEAD CORR CTR	490	6	496				2	318	176
FOUR MILE CORR CTR	495	1	496				4	331	161
TRINIDAD CORR FAC	475	5	480				5	415	60
S.T.U. at Y.O.S.	30	0	30				13	16	1
SKYLINE CORR CTR	239	2	241				1	7	233
COLORADO CORR CTR	134	0	134				1	7	126
DELTA CORR CTR	479	5	484					2	482
RIFLE CORR CTR	191	1	192					0	192
COLO CORR ALT PROGRAM	94	8	102				1	8	93
DENVER REC DIAG CTR	480	9	489	114	15	55	108	136	61
SAN CARLOS CORR FAC	246	5	251		25	92	54	41	39
CONTRACTS:									
BENT COUNTY CORR CTR	692	8	700			6	359	194	141
HUERFANO COUNTY CORR CTR	726	9	735		5	19	426	168	117
CROWLEY COUNTY CORR FAC	1,199	21	1,220		3	1	709	320	187
KIT CARSON COUNTY CORR FAC	743	10	753			10	416	210	117
CHEYENNE MTN REENTRY CTR	391	0	391				117	175	99
COMMUNITY/ISP	1,682	88	1,770	2		8	37	25	1,698
TOTAL MALE POPULATION	18,075	273	18,348	116	1,231	2,955	4,587	4,400	5,059
PERCENT OF TOTAL				0.6%	6.7%	16.1%	25.0%	24.0%	27.6%
FEMALE POPULATION									
COLO WOMEN'S CORR FAC	224	1	225		0	64	93	35	33
DENVER WOMEN'S CORR FAC	883	10	893	22	24	106	220	316	205
PUEBLO MINIMUM CTR	247	1	248				3	145	100
COLO CORR ALT PROGRAM	3	0	3				1		2
SAN CARLOS CORR FAC	0	0	0						
DENVER REC DIAG CTR INF	2	0	2				1	1	
COLO TERR CORR FAC INF.	0	0	0						
CONTRACTS:									
BRUSH CORR FAC	259	2	261				121	90	50
COMMUNITY/ISP	390	11	401			4	6	10	381
TOTAL FEMALE POPULATION	2,008	25	2,033	22	24	174	445	597	771
PERCENT OF TOTAL				1.1%	1.2%	8.6%	21.9%	29.4%	37.9%

*Final custody designations for jail backlog and contracts, fugitive, community regressions, and parole revocations are not reported.

COLORADO DEPARTMENT OF CORRECTIONS

ADULT INMATE JURISDICTIONAL POPULATION (1)

DATE: 2/7/2006

DATE	MALE POPULATION			FEMALE POPULATION			TOTAL POPULATION		
	Male Population	Net Change	Fiscal Y-T-D Average	Female Population	Net Change	Fiscal Y-T-D Average	Total Population	Net Change	Fiscal Y-T-D Average
01-31-06	19,245	53	88	2,135	-9	9	21,380	44	97
12-31-05	19,192	117		2,144	7		21,336	124	
11-30-05	19,075	32		2,137	9		21,212	41	
10-31-05	19,043	43		2,128	13		21,171	56	
09-30-05	19,000	71		2,115	-7		21,115	64	
08-31-05	18,929	183		2,122	19		21,051	202	
07-31-05	18,746	115		2,103	30		20,849	145	
06-30-05	18,631	123		2,073	43		20,704	166	
05-31-05	18,508	70		2,030	16		20,538	86	
04-30-05	18,438	102		2,014	32		20,452	134	
03-31-05	18,336	79		1,982	-10		20,318	69	
02-28-05	18,257	30		1,992	26		20,249	56	
01-31-05	18,227	-2		1,966	51		20,193	49	
12-31-04	18,229	56	68	1,915	11	27	20,144	67	95
11-30-04	18,173	79		1,904	27		20,077	106	
10-31-04	18,094	99		1,877	24		19,971	123	
09-30-04	17,995	-18		1,853	44		19,848	26	
08-31-04	18,013	95		1,809	44		19,822	139	
07-31-04	17,918	104		1,765	10		19,683	114	
06-30-04	17,814	-4		1,755	0		19,569	-4	
05-31-04	17,818	-5		1,755	-1		19,573	-6	
04-30-04	17,823	43		1,756	-18		19,579	25	
03-31-04	17,780	42		1,774	11		19,554	53	
02-29-04	17,738	2		1,763	4		19,501	6	
01-31-04	17,736	32		1,759	9		19,495	41	
12-31-03	17,704	110	49	1,750	26	11	19,454	136	60
11-30-03	17,594	9		1,724	16		19,318	25	
10-31-03	17,585	82		1,708	12		19,293	94	
09-30-03	17,503	96		1,696	23		19,199	119	
08-31-03	17,407	89		1,673	23		19,080	112	
07-31-03	17,318	92		1,650	30		18,968	122	
06-30-03	17,226		57	1,620		10	18,846		67
06-30-02	16,539		87	1,506		14	18,045		101
06-30-01	15,493		63	1,340		6	16,833		70
06-30-00	14,733		99	1,266		7	15,999		106
06-30-99	13,547		75	1,179		14	14,726		89
06-30-98	12,647		81	1,016		9	13,663		89
06-30-97	11,681		73	909		12	12,590		84
06-30-96	10,808		67	769		8	11,577		76
06-30-95	10,000		52	669		4	10,669		55
06-30-94	9,382			623			10,005		

(1) Adult inmate jurisdictional population includes on-grounds, off-grounds, out-of-state, escapees, and jail backlog and excludes offenders sentenced to the Youthful Offender System (Y.O.S.).

COLORADO DEPARTMENT OF CORRECTIONS
ADULT INMATE RELEASES FROM PRISON
TOTAL Population (Male and Female)

(Revised) Date: 4/10/2007

	Parole				Discharge					Other				Total
	Discretionary	Mandatory	Mand. Repar.	Com. Supv.	Sentence	H.B. 1087	Martin/Cooper	Chgs/Det.	Com Spv. Elim	Probation	Ct. Ord. Dsch.	Appeal Bond	Deceased	
Jan-06	316	218	75	0	45	51	11	14	0	13	6	0	7	756
Dec-05	235	238	98	0	51	47	15	17	0	18	12	0	6	737
Nov-05	183	297	126	0	37	55	7	13	0	10	18	0	5	751
Oct-05	157	304	130	0	34	58	11	19	0	17	10	1	5	746
Sep-05	142	318	90	0	30	61	17	14	0	23	6	0	3	704
Aug-05	124	312	109	0	33	47	17	20	0	14	11	0	6	693
Jul-05	121	306	109	0	46	48	13	13	0	15	9	0	8	688
Jun-05	144	312	105	0	28	57	13	16	0	22	13	0	0	710
May-05	148	313	95	0	42	61	8	14	0	16	7	1	7	712
Apr-05	121	313	125	0	40	57	9	20	0	18	12	0	10	725
Mar-05	155	311	100	0	46	64	15	21	0	24	11	1	4	752
Feb-05	132	290	109	0	58	63	16	14	0	17	12	0	5	716
Jan-05	183	274	113	0	53	54	16	19	0	10	2	0	5	729
Dec-04	143	273	98	0	35	47	15	12	0	24	15	1	6	669
Nov-04	120	287	73	0	53	60	12	17	0	16	9	3	4	654
Oct-04	102	292	78	0	42	66	16	14	0	22	11	0	3	646
Sep-04	110	286	125	0	47	48	15	25	0	20	6	0	3	685
Aug-04	115	266	88	0	52	54	15	17	0	13	7	0	4	631
Jul-04	125	227	135	0	41	52	7	10	0	14	8	0	1	620
Jun-04	161	282	61	0	61	55	17	20	0	9	13	0	3	682
May-04	151	304	n/a	0	42	82	18	13	0	24	0	0	1	635
Apr-04	168	318	n/a	0	50	64	17	12	1	16	14	0	7	667
Mar-04	273	261	n/a	0	47	63	14	25	4	14	10	1	3	715
Feb-04	226	248	n/a	0	50	72	16	11	2	12	15	0	6	658

Definitions of Release Types

Discretionary parole-Released to parole through Parole Board discretion prior to mandatory release or sentence discharge date.

Mandatory parole-Released to parole on mandatory release date.

Mand. Repar-Reparoled on specific date set by Parole Board (includes S.B. 252 reparoles). n/a - breakout not available prior to June 2004.

Com. Supv.-Released to serve 12 months of community supervision.

Sentence discharge-Completion of sentence with no further supervision.

H.B. 1087 discharge-Completion of sentence with no further supervision, subject to earn time provisions of H.B. 95-1087.

Martin/ Cooper discharge-Completion of sentence with no further supervision, sex offender subject to Martin/Cooper Supreme Court decision.

Chgs/ Det. discharge-Completion of sentence, released to other law enforcement for pending charges or detainees.

Com. Spv. Elim discharge-Completion of sentence following reincarceration on community supervision sentence.

Probation-Released by court to probation.

Ct. Ord. Dsch.-Released by court order.

Appeal Bond-Released by court to appeal bond.

Deceased-Offender death in prison.

COLORADO DEPARTMENT OF CORRECTIONS

ADULT INMATE RELEASES FROM PRISON

Male Population Only

Date: 4/10/2007

	Parole				Discharge					Other				Total
	Discretionary	Mandatory	Mand. Repar.	Com. Supv.	Sentence	H.B. 1087	Martin/Cooper	Chgs/Det.	Com Spv. Elim	Probation	Ct. Ord. Dsch.	Appeal Bond	Deceased	
Jan-06	266	187	63	0	43	48	11	13	0	12	5	0	6	654
Dec-05	193	204	84	0	48	43	15	17	0	16	11	0	4	635
Nov-05	156	251	114	0	32	47	7	12	0	10	17	0	4	650
Oct-05	127	273	101	0	32	50	11	17	0	15	10	1	4	641
Sep-05	111	283	78	0	26	57	16	12	0	22	6	0	3	614
Aug-05	98	280	94	0	31	41	17	19	0	12	8	0	6	606
Jul-05	100	253	95	0	43	47	13	13	0	11	8	0	8	591
Jun-05	113	280	94	0	25	52	13	13	0	20	13	0	0	623
May-05	127	270	83	0	39	54	8	14	0	15	6	1	6	623
Apr-05	103	270	109	0	37	49	9	20	0	16	8	0	10	631
Mar-05	129	275	82	0	43	62	15	19	0	23	10	1	4	663
Feb-05	109	259	100	0	53	57	16	13	0	15	11	0	5	638
Jan-05	159	250	99	0	50	48	16	18	0	8	2	0	4	654
Dec-04	118	238	82	0	33	46	15	12	0	21	14	0	6	585
Nov-04	103	250	63	0	50	56	12	16	0	15	8	3	4	580
Oct-04	83	270	67	0	38	61	16	14	0	20	10	0	3	582
Sep-04	95	262	114	0	44	44	15	23	0	16	5	0	1	619
Aug-04	97	238	76	0	49	50	15	17	0	11	5	0	4	562
Jul-04	106	198	121	0	39	44	7	10	0	12	7	0	1	545
Jun-04	n/a	n/a	n/a	0	n/a	n/a	n/a	n/a	n/a	n/a	n/a	n/a	n/a	n/a
May-04	n/a	n/a	n/a	0	n/a	n/a	n/a	n/a	n/a	n/a	n/a	n/a	n/a	n/a
Apr-04	n/a	n/a	n/a	0	n/a	n/a	n/a	n/a	n/a	n/a	n/a	n/a	n/a	n/a
Mar-04	n/a	n/a	n/a	0	n/a	n/a	n/a	n/a	n/a	n/a	n/a	n/a	n/a	n/a
Feb-04	n/a	n/a	n/a	0	n/a	n/a	n/a	n/a	n/a	n/a	n/a	n/a	n/a	n/a

Definitions of Release Types

Discretionary parole-Released to parole through Parole Board discretion prior to mandatory release or sentence discharge date.

Mandatory parole-Released to parole on mandatory release date.

Mand. Repar-Reparoled on specific date set by Parole Board (includes S.B. 252 reparoles). n/a - breakout not available prior to June 2004.

Com. Supv.-Released to serve 12 months of community supervision.

Sentence discharge-Completion of sentence with no further supervision.

H.B. 1087 discharge-Completion of sentence with no further supervision, subject to earn time provisions of H.B. 95-1087.

Martin/ Cooper discharge-Completion of sentence with no further supervision, sex offender subject to Martin/Cooper Supreme Court decision.

Chgs/ Det. discharge-Completion of sentence, released to other law enforcement for pending charges or detainees.

Com. Spv. Elim discharge-Completion of sentence following reincarceration on community supervision sentence.

Probation-Released by court to probation.

Ct. Ord. Dsch.-Released by court order.

Appeal Bond-Released by court to appeal bond.

Deceased-Offender death in prison.

COLORADO DEPARTMENT OF CORRECTIONS
ADULT INMATE RELEASES FROM PRISON
Female Population Only

Date: 2/7/2006

	Parole				Discharge					Other				Total
	Discretionary	Mandatory	Mand. Repar.	Com. Supv.	Sentence	H.B. 1087	Martin/Cooper	Chgs/Det.	Com Spv. Elim	Probation	Ct. Ord. Dsch.	Appeal Bond	Deceased	
Jan-06	50	31	12	0	2	3	0	1	0	1	1	0	1	102
Dec-05	42	34	14	0	3	4	0	0	0	2	1	0	2	102
Nov-05	27	46	12	0	5	8	0	1	0	0	1	0	1	101
Oct-05	30	31	29	0	2	8	0	2	0	2	0	0	1	105
Sep-05	31	35	12	0	4	4	1	2	0	1	0	0	0	90
Aug-05	26	32	15	0	2	6	0	1	0	2	3	0	0	87
Jul-05	21	53	14	0	3	1	0	0	0	4	1	0	0	97
Jun-05	31	32	11	0	3	5	0	3	0	2	0	0	0	87
May-05	21	43	12	0	3	7	0	0	0	1	1	0	1	89
Apr-05	18	43	16	0	3	8	0	0	0	2	4	0	0	94
Mar-05	26	36	18	0	3	2	0	2	0	1	1	0	0	89
Feb-05	23	31	9	0	5	6	0	1	0	2	1	0	0	78
Jan-05	24	24	14	0	3	6	0	1	0	2	0	0	1	75
Dec-04	25	35	16	0	2	1	0	0	0	3	1	1	0	84
Nov-04	17	37	10	0	3	4	0	1	0	1	1	0	0	74
Oct-04	19	22	11	0	4	5	0	0	0	2	1	0	0	64
Sep-04	15	24	11	0	3	4	0	2	0	4	1	0	2	66
Aug-04	18	28	12	0	3	4	0	0	0	2	2	0	0	69
Jul-04	19	29	14	0	2	8	0	0	0	2	1	0	0	75
Jun-04	n/a	n/a	n/a	0	n/a	n/a	n/a	n/a	n/a	n/a	n/a	n/a	n/a	n/a
May-04	n/a	n/a	n/a	0	n/a	n/a	n/a	n/a	n/a	n/a	n/a	n/a	n/a	n/a
Apr-04	n/a	n/a	n/a	0	n/a	n/a	n/a	n/a	n/a	n/a	n/a	n/a	n/a	n/a
Mar-04	n/a	n/a	n/a	0	n/a	n/a	n/a	n/a	n/a	n/a	n/a	n/a	n/a	n/a
Feb-04	n/a	n/a	n/a	0	n/a	n/a	n/a	n/a	n/a	n/a	n/a	n/a	n/a	n/a

Definitions of Release Types

Discretionary parole-Released to parole through Parole Board discretion prior to mandatory release or sentence discharge date.

Mandatory parole-Released to parole on mandatory release date.

Mand. Repar-Reparoled on specific date set by Parole Board (includes S.B. 252 reparoles). n/a - breakout not available prior to June 2004.

Com. Supv.-Released to serve 12 months of community supervision.

Sentence discharge-Completion of sentence with no further supervision.

H.B. 1087 discharge-Completion of sentence with no further supervision, subject to earn time provisions of H.B. 95-1087.

Martin/ Cooper discharge-Completion of sentence with no further supervision, sex offender subject to Martin/Cooper Supreme Court decision.

Chgs/ Det. discharge-Completion of sentence, released to other law enforcement for pending charges or detainees.

Com. Spv. Elim discharge-Completion of sentence following reincarceration on community supervision sentence.

Probation-Released by court to probation.

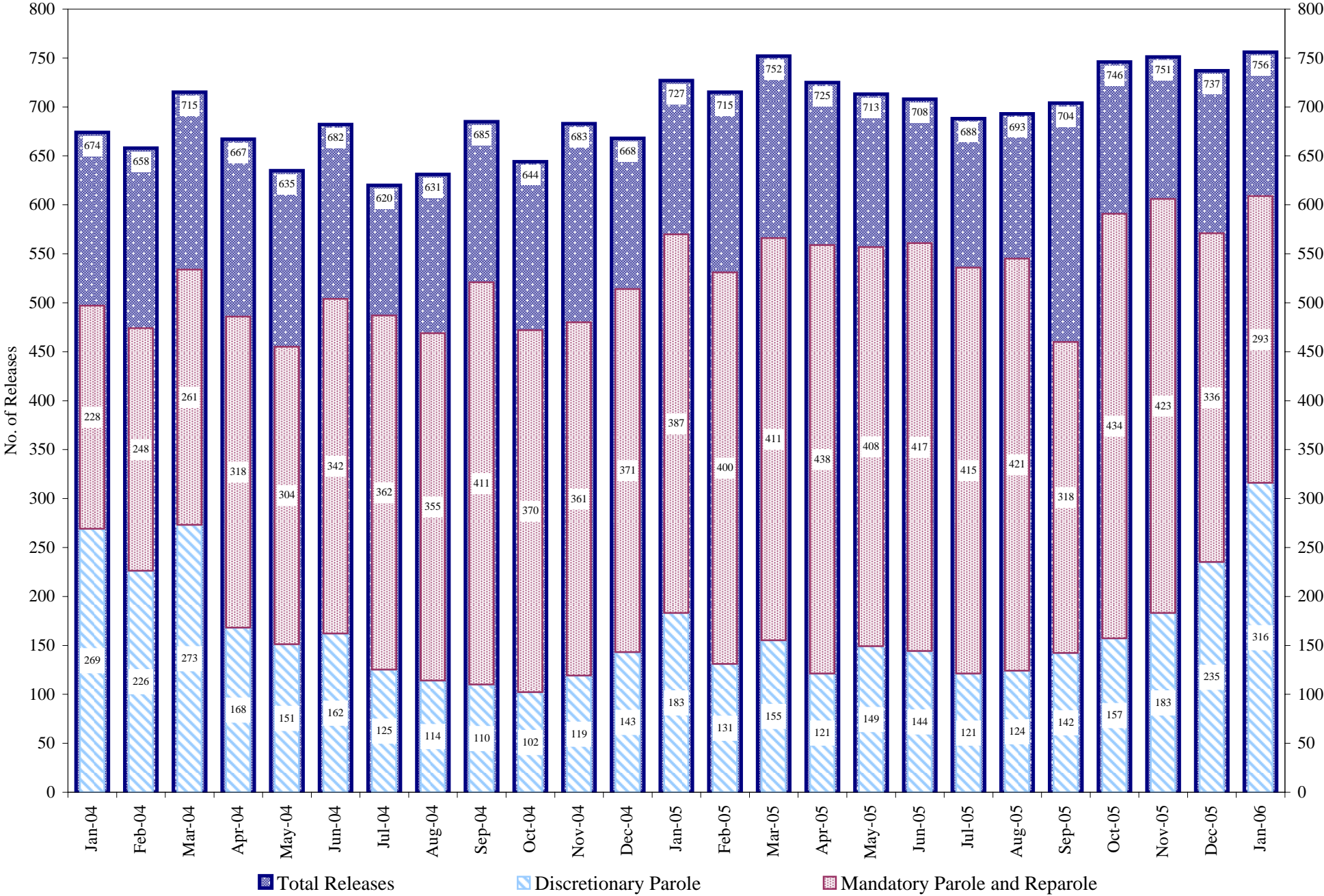
Ct. Ord. Dsch.-Released by court order.

Appeal Bond-Released by court to appeal bond.

Deceased-Offender death in prison.

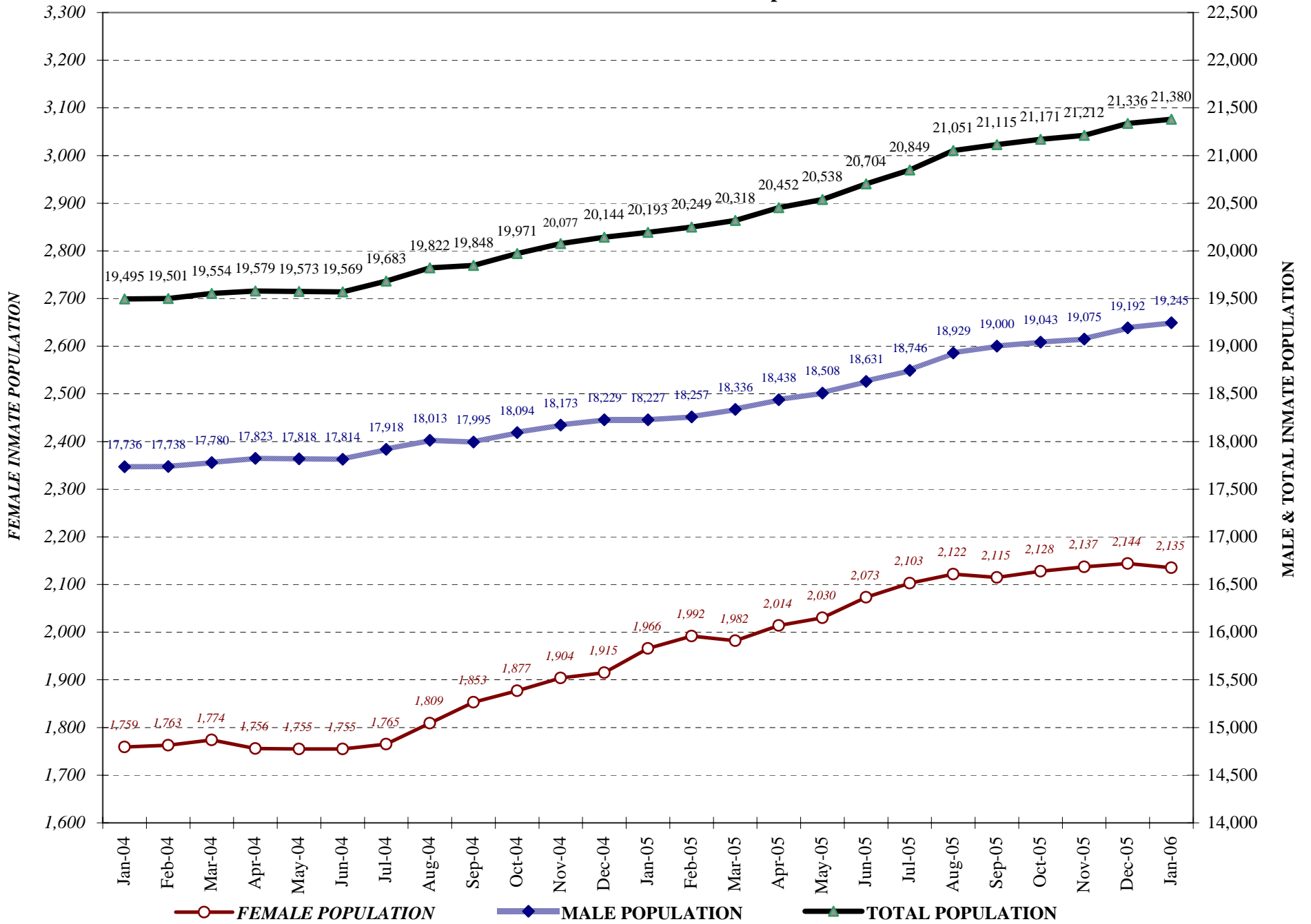
COLORADO DEPARTMENT OF CORRECTIONS

Adult Prison Releases



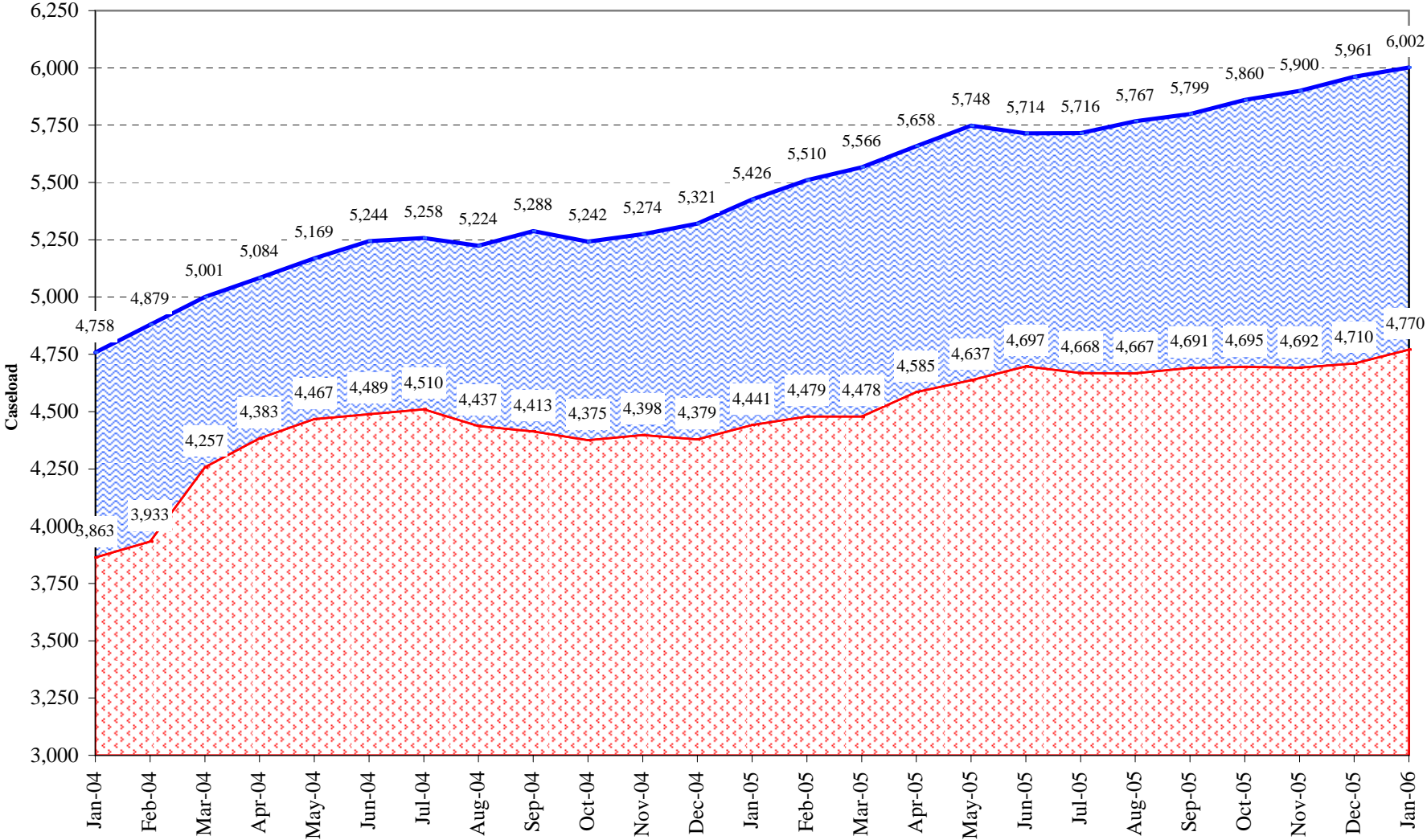
Total releases include releases to discretionary parole, mandatory parole and reparole, all types of discharges and other releases as detailed on the previous page.

COLORADO DEPARTMENT OF CORRECTIONS Adult Jurisdiction Inmate Population



COLORADO DEPARTMENT OF CORRECTIONS

Parole Population



■ TOTAL CASELOAD (including ISP)

■ REGULAR* CASELOAD

*Regular caseload includes interstate parole, but excludes out-of-state parolees and absconders.