

**COLORADO DEPARTMENT OF CORRECTIONS
MONTHLY POPULATION AND CAPACITY REPORT
AS OF NOVEMBER 30, 2005**

7-Dec-05

	10/31/05	CAPACITY CHANGES	----- 11/30/05 -----		----- 11/30/04 -----	
	OPERATIONAL CAPACITY*		OPERATIONAL CAPACITY*	ON-GRDS POPULATION	OPERATIONAL CAPACITY*	ON-GRDS POPULATION
COLO STATE PENITENTIARY	756		756	754	756	754
CENTENNIAL CORR FAC	320		320	314	320	307
STERLING CORR FAC	2,445		2,445	2,405	2,445	2,409
LIMON CORR FAC	953		953	944	953	948
ARK VALLEY CORR FAC	1,007		1,007	1,006	1,007	1,001
BUENA VISTA CORR FAC	826		826	818	826	811
BUENA VISTA MIN CTR	292		292	288	292	285
COLO TERR CORR FAC	786		786	787	786	786
FORT LYON CORR FAC	500		500	495	500	477
FREMONT CORR FAC	1,471		1,471	1,459	1,471	1,456
ARROWHEAD CORR CTR	494		494	489	494	491
FOUR MILE CORR CTR	499		499	496	499	495
PRE-RELEASE CORR CTR	0		0	0	0	0
PUEBLO MINIMUM CTR	256		256	250	256	255
TRINIDAD CORR FAC	484		484	478	484	468
S.T.U. at Y.O.S.	30		30	26	30	25
SKYLINE CORR CTR	249		249	249	249	243
COLORADO CORR CTR	150		150	148	150	147
DELTA CORR CTR	484		484	478	484	476
RIFLE CORR CTR	192		192	187	192	192
COLO CORR ALT PROGRAM	100		100	100	100	88
COLO WOMEN'S CORR FAC	224		224	216	224	214
DENVER WOMEN'S CORR FAC	900		900	866	900	881
DENVER REC DIAG CTR	480		480	496	480	487
SAN CARLOS CORR FAC	255		255	250	255	247
SUBTOTAL	14,153	0	14,153	13,999	14,153	13,943
CONTRACTS:						
BENT COUNTY CORR CTR	724		724	728	724	653
HUERFANO COUNTY CORR CTR	778		778	755	778	764
CROWLEY COUNTY CORR FAC	1,820		1,820	1,023	1,185	454
KIT CARSON COUNTY CORR FAC	820		820	781	820	718
GUADALAUPE CO TX CORR FAC	0		0	0	0	0
TALLAHATCHIE MS CORR FAC	0		0	0	121	121
CHEYENNE MTN REENTRY CTR	500		500	336	0	0
BRUSH CORR FAC	250	20	270	268	75	69
OFF-GROUNDS POPULATION:				211		227
ESCAPEES/WALKAWAYS				282		249
REVOCATIONS-JAIL				0		1
JAIL BACKLOG:						
BACKLOG LESS THAN 72 HOURS			43		85	
BACKLOG GREATER THAN 72 HOURS (FISCAL YTD AVE = 528)			296		457	
BACKLOG-PAROLEES AWAITING TRANSFER			71		109	
TOTAL JAIL BACKLOG				410		651
COUNTY JAIL CONTRACTS				50		40
COMMUNITY CORRECTIONS						
COMMUNITY						
RESIDENTIAL	1,240	-14	1,226	1,226	1,150	1,150
PAROLE REVOCATIONS	0	1	1	1	5	5
REVOKED-RET TO CUST	182	-4	178	178	143	143
NON-RESIDENTIAL	61	-4	57	57	72	72
REGRESSIONS	56	-18	38	38	20	20
TOTAL COMMUNITY	1,539	-39	1,500	1,500	1,390	1,390
ISP						
RESIDENTIAL	843	-17	826	826	755	755
NON-RESIDENTIAL	26	11	37	37	40	40
REGRESSIONS	7	-1	6	6	2	2
TOTAL ISP	876	-7	869	869	797	797
TOTAL COMM. CORRECTIONS	2,415	-46	2,369	2,369	2,187	2,187
MALE POPULATION			19,075		18,173	
FEMALE POPULATION			2,137		1,904	
TOTAL INMATE JURISDICTIONAL POPULATION				21,212		20,077

*OPERATIONAL CAPACITY INCLUDES ALL BEDS AVAILABLE FOR USE, INCLUDING MANAGEMENT CONTROL UNITS, BU EXCLUDES EMERGENCY DOUBLE BUNKING

**COLORADO DEPARTMENT OF CORRECTIONS
MONTHLY POPULATION AND CAPACITY REPORT
AS OF NOVEMBER 30, 2005**

7-Dec-05

CURRENT MONTH CHANGES IN CAPACITY:

Nov-05 BRUSH CORR FAC EXPAND CONTRACT BEDS 20

NET MONTHLY GROWTH RATE:

CURRENT MONTH 41
FISCAL YEAR-TO-DATE AVERAGE 102

YOUTHFUL OFFENDER SYSTEM

	----- 11/30/05 -----					11/30/04
	DRDC	PUEBLO	CONTRACT FACILITIES	COMM. CORR.	TOTAL POPULATION	TOTAL POPULATION
INTAKE/IDO	0	7			7	2
RFP/REMEDATION	0	11			11	16
PHASE I	0	141	0		141	149
PHASE II	0	16			16	16
PHASE III		0		40	40	39
OFF GROUNDS/BACKLOG					1	8
TOTAL Y.O.S. POPULATION	0	175	0	40	216	230

	CURRENT MONTH	FISCAL YR. TO DATE
YOS ADMISSIONS	3	20
YOS RELEASES:		
COMPLETION OF SENTENCE	2	17
JUDICIAL RELEASE TO PROB/CT ORD DISCHG	0	1
JUDICIAL TRANSFER TO DOC	0	0
TERMINATION/FAILURE	1	5
DECEASED	0	1
TOTAL RELEASES	3	24

PAROLE CASELOAD

	----- 11/30/05 -----			----- 10/31/05 -----		----- 11/30/04 -----	
	DOMESTIC	INTERST PAR/PROB	TOTAL CASELOAD	DOMESTIC	TOTAL CASELOAD	DOMESTIC	TOTAL CASELOAD
DENVER REGION							
REGULAR	1,734	104	1,838	1,750	1,854	1,621	1,736
ISP	583		583	526	526	369	369
SUBTOTAL	2,317	104	2,421	2,276	2,380	1,990	2,105
NORTHEAST REGION							
REGULAR	1,183	38	1,221	1,206	1,245	1,111	1,160
ISP	299		299	296	296	234	234
SUBTOTAL	1,482	38	1,520	1,502	1,541	1,345	1,394
SOUTHEAST REGION							
REGULAR	1,030	62	1,092	1,013	1,076	936	1,008
ISP	237		237	227	227	174	174
SUBTOTAL	1,267	62	1,329	1,240	1,303	1,110	1,182
WESTERN REGION							
REGULAR	495	46	541	472	520	439	494
ISP	89		89	116	116	99	99
SUBTOTAL	584	46	630	588	636	538	593
TOTAL CASELOAD							
REGULAR	4,442	250	4,692	4,441	4,695	4,107	4,398
ISP	1,208		1,208	1,165	1,165	876	876
TOTAL	5,650	250	5,900	5,606	5,860	4,983	5,274
ADDITIONAL CASELOAD:							
OUT-OF-STATE PAROLEES			1,567		1,524		1,442
PAROLEE ABSCONDERS			649		631		598

COLORADO DEPARTMENT OF CORRECTIONS
MONTHLY POPULATION AND CAPACITY REPORT
AS OF NOVEMBER 30, 2005

7-Dec-05

	11/30/2005 POPULATION			----- FINAL CUSTODY DESIGNATION* -----					
	On-Grds.	Off-Grds	TOTAL	Uncls.	Ad.Seg	Close	Medium	Min.-Res.	Minimum
MALE POPULATION									
COLO STATE PENITENTIARY	754	3	757			5			
CENTENNIAL CORR FAC	314	2	316			167	11	4	4
STERLING CORR FAC	2,405	24	2,429			702	541	595	386
LIMON CORR FAC	944	10	954			667	181	66	24
ARK VALLEY CORR FAC	1,006	7	1,013			437	320	167	86
BUENA VISTA CORR FAC	818	14	832			301	293	149	86
BUENA VISTA MIN CTR	288	2	290			0	2	223	65
COLO TERR CORR FAC	787	12	799			247	271	173	103
FORT LYON CORR FAC	495	8	503			27	252	148	75
FREMONT CORR FAC	1,459	14	1,473			244	445	484	289
ARROWHEAD CORR CTR	489	4	493				3	310	180
FOUR MILE CORR CTR	496	1	497				4	349	144
TRINIDAD CORR FAC	478	8	486				2	418	66
S.T.U. at Y.O.S.	26	1	27				11	12	4
SKYLINE CORR CTR	249	1	250					4	246
COLORADO CORR CTR	148	1	149					8	141
DELTA CORR CTR	478	8	486		1			3	482
RIFLE CORR CTR	187	2	189						189
COLO CORR ALT PROGRAM	94	6	100				1	8	91
DENVER REC DIAG CTR	496	16	512	161	13	73	109	101	55
SAN CARLOS CORR FAC	250	4	254		23	92	54	39	46
CONTRACTS:									
BENT COUNTY CORR CTR	728	10	738		4	12	333	238	151
HUERFANO COUNTY CORR CTR	755	8	763		2	20	444	172	125
CROWLEY COUNTY CORR FAC	1,023	13	1,036			7	562	313	154
KIT CARSON COUNTY CORR FAC	781	9	790			11	444	212	123
CHEYENNE MTN REENTRY CTR	336	1	337			2	111	166	58
COMMUNITY/ISP	1,671	80	1,751	1		7	25	22	1,696
TOTAL MALE POPULATION	17,955	269	18,224	162	1,169	3,021	4,419	4,384	5,069
PERCENT OF TOTAL				0.9%	6.4%	16.6%	24.2%	24.1%	27.8%
FEMALE POPULATION									
COLO WOMEN'S CORR FAC	216	5	221		1	64	82	44	30
DENVER WOMEN'S CORR FAC	866	7	873	16	31	107	220	294	205
PUEBLO MINIMUM CTR	250	1	251				1	144	106
COLO CORR ALT PROGRAM	6	0	6						6
SAN CARLOS CORR FAC	0	0	0						
DENVER REC DIAG CTR INF	0	1	1				1		
COLO TERR CORR FAC INF.	0	0	0						
CONTRACTS:									
BRUSH CORR FAC	268	6	274			1	143	95	35
COMMUNITY/ISP	381	14	395			1	7	6	381
TOTAL FEMALE POPULATION	1,987	34	2,021	16	32	173	454	583	763
PERCENT OF TOTAL				0.8%	1.6%	8.6%	22.5%	28.8%	37.8%

*Final custody designations for jail backlog and contracts, fugitive, community regressions, and parole revocations are not reported.

COLORADO DEPARTMENT OF CORRECTIONS
ADULT INMATE JURISDICTIONAL POPULATION (1)

DATE: 12/7/2005

DATE	MALE POPULATION			FEMALE POPULATION			TOTAL POPULATION		
	Male Population	Net Change	Fiscal Y-T-D Average	Female Population	Net Change	Fiscal Y-T-D Average	Total Population	Net Change	Fiscal Y-T-D Average
11-30-05	19,075	32	89	2,137	9	13	21,212	41	102
10-31-05	19,043	43		2,128	13		21,171	56	
09-30-05	19,000	71		2,115	-7		21,115	64	
08-31-05	18,929	183		2,122	19		21,051	202	
07-31-05	18,746	115		2,103	30		20,849	145	
06-30-05	18,631	123		2,073	43		20,704	166	
05-31-05	18,508	70		2,030	16		20,538	86	
04-30-05	18,438	102		2,014	32		20,452	134	
03-31-05	18,336	79		1,982	-10		20,318	69	
02-28-05	18,257	30		1,992	26		20,249	56	
01-31-05	18,227	-2		1,966	51		20,193	49	
12-31-04	18,229	56	68	1,915	11	27	20,144	67	95
11-30-04	18,173	79		1,904	27		20,077	106	
10-31-04	18,094	99		1,877	24		19,971	123	
09-30-04	17,995	-18		1,853	44		19,848	26	
08-31-04	18,013	95		1,809	44		19,822	139	
07-31-04	17,918	104		1,765	10		19,683	114	
06-30-04	17,814	-4		1,755	0		19,569	-4	
05-31-04	17,818	-5		1,755	-1		19,573	-6	
04-30-04	17,823	43		1,756	-18		19,579	25	
03-31-04	17,780	42		1,774	11		19,554	53	
02-29-04	17,738	2		1,763	4		19,501	6	
01-31-04	17,736	32		1,759	9		19,495	41	
12-31-03	17,704	110	49	1,750	26	11	19,454	136	60
11-30-03	17,594	9		1,724	16		19,318	25	
10-31-03	17,585	82		1,708	12		19,293	94	
09-30-03	17,503	96		1,696	23		19,199	119	
08-31-03	17,407	89		1,673	23		19,080	112	
07-31-03	17,318	92		1,650	30		18,968	122	
06-30-03	17,226		57	1,620		10	18,846		67
06-30-02	16,539		87	1,506		14	18,045		101
06-30-01	15,493		63	1,340		6	16,833		70
06-30-00	14,733		99	1,266		7	15,999		106
06-30-99	13,547		75	1,179		14	14,726		89
06-30-98	12,647		81	1,016		9	13,663		89
06-30-97	11,681		73	909		12	12,590		84
06-30-96	10,808		67	769		8	11,577		76
06-30-95	10,000		52	669		4	10,669		55
06-30-94	9,382			623			10,005		

(1) Adult inmate jurisdictional population includes on-grounds, off-grounds, out-of-state, escapees, and jail backlog and excludes offenders sentenced to the Youthful Offender System (Y.O.S.).

COLORADO DEPARTMENT OF CORRECTIONS
ADULT INMATE RELEASES FROM PRISON
TOTAL Population (Male and Female)

(Revised) Date: 4/10/2007

	Parole				Discharge					Other				Total
	Discretionary	Mandatory	Mand. Repar.	Com. Supv.	Sentence	H.B. 1087	Martin/Cooper	Chgs/Det.	Com Spv. Elim	Probation	Ct. Ord. Dsch.	Appeal Bond	Deceased	
Nov-05	183	297	126	0	37	55	7	13	0	10	18	0	5	751
Oct-05	157	304	130	0	34	58	11	19	0	17	10	1	5	746
Sep-05	142	318	90	0	30	61	17	14	0	23	6	0	3	704
Aug-05	124	312	109	0	33	47	17	20	0	14	11	0	6	693
Jul-05	121	306	109	0	46	48	13	13	0	15	9	0	8	688
Jun-05	144	312	105	0	28	57	13	16	0	22	13	0	0	710
May-05	148	313	95	0	42	61	8	14	0	16	7	1	7	712
Apr-05	121	313	125	0	40	57	9	20	0	18	12	0	10	725
Mar-05	155	311	100	0	46	64	15	21	0	24	11	1	4	752
Feb-05	132	290	109	0	58	63	16	14	0	17	12	0	5	716
Jan-05	183	274	113	0	53	54	16	19	0	10	2	0	5	729
Dec-04	143	273	98	0	35	47	15	12	0	24	15	1	6	669
Nov-04	120	287	73	0	53	60	12	17	0	16	9	3	4	654
Oct-04	102	292	78	0	42	66	16	14	0	22	11	0	3	646
Sep-04	110	286	125	0	47	48	15	25	0	20	6	0	3	685
Aug-04	115	266	88	0	52	54	15	17	0	13	7	0	4	631
Jul-04	125	227	135	0	41	52	7	10	0	14	8	0	1	620
Jun-04	161	282	61	0	61	55	17	20	0	9	13	0	3	682
May-04	151	304	n/a	0	42	82	18	13	0	24	0	0	1	635
Apr-04	168	318	n/a	0	50	64	17	12	1	16	14	0	7	667
Mar-04	273	261	n/a	0	47	63	14	25	4	14	10	1	3	715
Feb-04	226	248	n/a	0	50	72	16	11	2	12	15	0	6	658
Jan-04	269	228	n/a	0	38	72	18	14	4	13	14	0	4	674
Dec-03	205	238	n/a	0	40	56	12	19	3	26	9	1	3	612
Nov-03	145	230	n/a	0	59	66	18	19	5	12	13	0	0	567
Oct-03	193	231	n/a	0	49	68	15	19	4	23	8	0	4	614

Definitions of Release Types

Discretionary parole-Released to parole through Parole Board discretion prior to mandatory release or sentence discharge date.

Mandatory parole-Released to parole on mandatory release date.

Mand. Repar-Reparoled on specific date set by Parole Board (includes S.B. 252 reparoles). n/a - breakout not available prior to June 2004.

Com. Supv.-Released to serve 12 months of community supervision.

Sentence discharge-Completion of sentence with no further supervision.

H.B. 1087 discharge-Completion of sentence with no further supervision, subject to earn time provisions of H.B. 95-1087.

Martin/ Cooper discharge-Completion of sentence with no further supervision, sex offender subject to Martin/Cooper Supreme Court decision.

Chgs/ Det. discharge-Completion of sentence, released to other law enforcement for pending charges or detainees.

Com. Spv. Elim discharge-Completion of sentence following reincarceration on community supervision sentence.

Probation-Released by court to probation.

Ct. Ord. Dsch.-Released by court order.

Appeal Bond-Released by court to appeal bond.

Deceased-Offender death in prison.

COLORADO DEPARTMENT OF CORRECTIONS
ADULT INMATE RELEASES FROM PRISON
Male Population Only

(Revised) Date: 4/10/2007

	Parole				Discharge					Other				Total
	Discretionary	Mandatory	Mand. Repar.	Com. Supv.	Sentence	H.B. 1087	Martin/Cooper	Chgs/Det.	Com Spv. Elim	Probation	Ct. Ord. Dsch.	Appeal Bond	Deceased	
Nov-05	156	251	114	0	32	47	7	12	0	10	17	0	4	650
Oct-05	127	273	101	0	32	50	11	17	0	15	10	1	4	641
Sep-05	111	283	78	0	26	57	16	12	0	22	6	0	3	614
Aug-05	98	280	94	0	31	41	17	19	0	12	8	0	6	606
Jul-05	100	253	95	0	43	47	13	13	0	11	8	0	8	591
Jun-05	113	280	94	0	25	52	13	13	0	20	13	0	0	623
May-05	127	270	83	0	39	54	8	14	0	15	6	1	6	623
Apr-05	103	270	109	0	37	49	9	20	0	16	8	0	10	631
Mar-05	129	275	82	0	43	62	15	19	0	23	10	1	4	663
Feb-05	109	259	100	0	53	57	16	13	0	15	11	0	5	638
Jan-05	159	250	99	0	50	48	16	18	0	8	2	0	4	654
Dec-04	118	238	82	0	33	46	15	12	0	21	14	0	6	585
Nov-04	103	250	63	0	50	56	12	16	0	15	8	3	4	580
Oct-04	83	270	67	0	38	61	16	14	0	20	10	0	3	582
Sep-04	95	262	114	0	44	44	15	23	0	16	5	0	1	619
Aug-04	97	238	76	0	49	50	15	17	0	11	5	0	4	562
Jul-04	106	198	121	0	39	44	7	10	0	12	7	0	1	545
Jun-04	n/a	n/a	n/a	0	n/a	n/a	n/a	n/a	n/a	n/a	n/a	n/a	n/a	n/a
May-04	n/a	n/a	n/a	0	n/a	n/a	n/a	n/a	n/a	n/a	n/a	n/a	n/a	n/a
Apr-04	n/a	n/a	n/a	0	n/a	n/a	n/a	n/a	n/a	n/a	n/a	n/a	n/a	n/a
Mar-04	n/a	n/a	n/a	0	n/a	n/a	n/a	n/a	n/a	n/a	n/a	n/a	n/a	n/a
Feb-04	n/a	n/a	n/a	0	n/a	n/a	n/a	n/a	n/a	n/a	n/a	n/a	n/a	n/a
Jan-04	n/a	n/a	n/a	0	n/a	n/a	n/a	n/a	n/a	n/a	n/a	n/a	n/a	n/a
Dec-03	n/a	n/a	n/a	0	n/a	n/a	n/a	n/a	n/a	n/a	n/a	n/a	n/a	n/a
Nov-03	n/a	n/a	n/a	0	n/a	n/a	n/a	n/a	n/a	n/a	n/a	n/a	n/a	n/a
Oct-03	n/a	n/a	n/a	0	n/a	n/a	n/a	n/a	n/a	n/a	n/a	n/a	n/a	n/a

Definitions of Release Types

- Discretionary parole**-Released to parole through Parole Board discretion prior to mandatory release or sentence discharge date.
- Mandatory parole**-Released to parole on mandatory release date.
- Mand. Repar**-Reparoled on specific date set by Parole Board (includes S.B. 252 reparoles). n/a - breakout not available prior to June 2004.
- Com. Supv.**-Released to serve 12 months of community supervision.
- Sentence discharge**-Completion of sentence with no further supervision.
- H.B. 1087 discharge**-Completion of sentence with no further supervision, subject to earn time provisions of H.B. 95-1087.
- Martin/ Cooper discharge**-Completion of sentence with no further supervision, sex offender subject to Martin/Cooper Supreme Court decision.
- Chgs/ Det. discharge**-Completion of sentence, released to other law enforcement for pending charges or detainees.
- Com. Spv. Elim discharge**-Completion of sentence following reincarceration on community supervision sentence.
- Probation**-Released by court to probation.
- Ct. Ord. Dsch.**-Released by court order.
- Appeal Bond**-Released by court to appeal bond.
- Deceased**-Offender death in prison.

COLORADO DEPARTMENT OF CORRECTIONS
ADULT INMATE RELEASES FROM PRISON
Female Population Only

Date: 12/7/2005

	Parole				Discharge					Other				Total
	Discretionary	Mandatory	Mand. Repar.	Com. Supv.	Sentence	H.B. 1087	Martin/Cooper	Chgs/Det.	Com Spv. Elim	Probation	Ct. Ord. Dsch.	Appeal Bond	Deceased	
Nov-05	27	46	12	0	5	8	0	1	0	0	1	0	1	101
Oct-05	30	31	29	0	2	8	0	2	0	2	0	0	1	105
Sep-05	31	35	12	0	4	4	1	2	0	1	0	0	0	90
Aug-05	26	32	15	0	2	6	0	1	0	2	3	0	0	87
Jul-05	21	53	14	0	3	1	0	0	0	4	1	0	0	97
Jun-05	31	32	11	0	3	5	0	3	0	2	0	0	0	87
May-05	21	43	12	0	3	7	0	0	0	1	1	0	1	89
Apr-05	18	43	16	0	3	8	0	0	0	2	4	0	0	94
Mar-05	26	36	18	0	3	2	0	2	0	1	1	0	0	89
Feb-05	23	31	9	0	5	6	0	1	0	2	1	0	0	78
Jan-05	24	24	14	0	3	6	0	1	0	2	0	0	1	75
Dec-04	25	35	16	0	2	1	0	0	0	3	1	1	0	84
Nov-04	17	37	10	0	3	4	0	1	0	1	1	0	0	74
Oct-04	19	22	11	0	4	5	0	0	0	2	1	0	0	64
Sep-04	15	24	11	0	3	4	0	2	0	4	1	0	2	66
Aug-04	18	28	12	0	3	4	0	0	0	2	2	0	0	69
Jul-04	19	29	14	0	2	8	0	0	0	2	1	0	0	75
Jun-04	n/a	n/a	n/a	0	n/a	n/a	n/a	n/a	n/a	n/a	n/a	n/a	n/a	n/a
May-04	n/a	n/a	n/a	0	n/a	n/a	n/a	n/a	n/a	n/a	n/a	n/a	n/a	n/a
Apr-04	n/a	n/a	n/a	0	n/a	n/a	n/a	n/a	n/a	n/a	n/a	n/a	n/a	n/a
Mar-04	n/a	n/a	n/a	0	n/a	n/a	n/a	n/a	n/a	n/a	n/a	n/a	n/a	n/a
Feb-04	n/a	n/a	n/a	0	n/a	n/a	n/a	n/a	n/a	n/a	n/a	n/a	n/a	n/a
Jan-04	n/a	n/a	n/a	0	n/a	n/a	n/a	n/a	n/a	n/a	n/a	n/a	n/a	n/a
Dec-03	n/a	n/a	n/a	0	n/a	n/a	n/a	n/a	n/a	n/a	n/a	n/a	n/a	n/a
Nov-03	n/a	n/a	n/a	0	n/a	n/a	n/a	n/a	n/a	n/a	n/a	n/a	n/a	n/a
Oct-03	n/a	n/a	n/a	0	n/a	n/a	n/a	n/a	n/a	n/a	n/a	n/a	n/a	n/a

Definitions of Release Types

Discretionary parole-Released to parole through Parole Board discretion prior to mandatory release or sentence discharge date.

Mandatory parole-Released to parole on mandatory release date.

Mand. Repar-Reparoled on specific date set by Parole Board (includes S.B. 252 reparoles). n/a - breakout not available prior to June 2004.

Com. Supv.-Released to serve 12 months of community supervision.

Sentence discharge-Completion of sentence with no further supervision.

H.B. 1087 discharge-Completion of sentence with no further supervision, subject to earn time provisions of H.B. 95-1087.

Martin/ Cooper discharge-Completion of sentence with no further supervision, sex offender subject to Martin/Cooper Supreme Court decision.

Chgs/ Det. discharge-Completion of sentence, released to other law enforcement for pending charges or detainees.

Com. Spv. Elim discharge-Completion of sentence following reincarceration on community supervision sentence.

Probation-Released by court to probation.

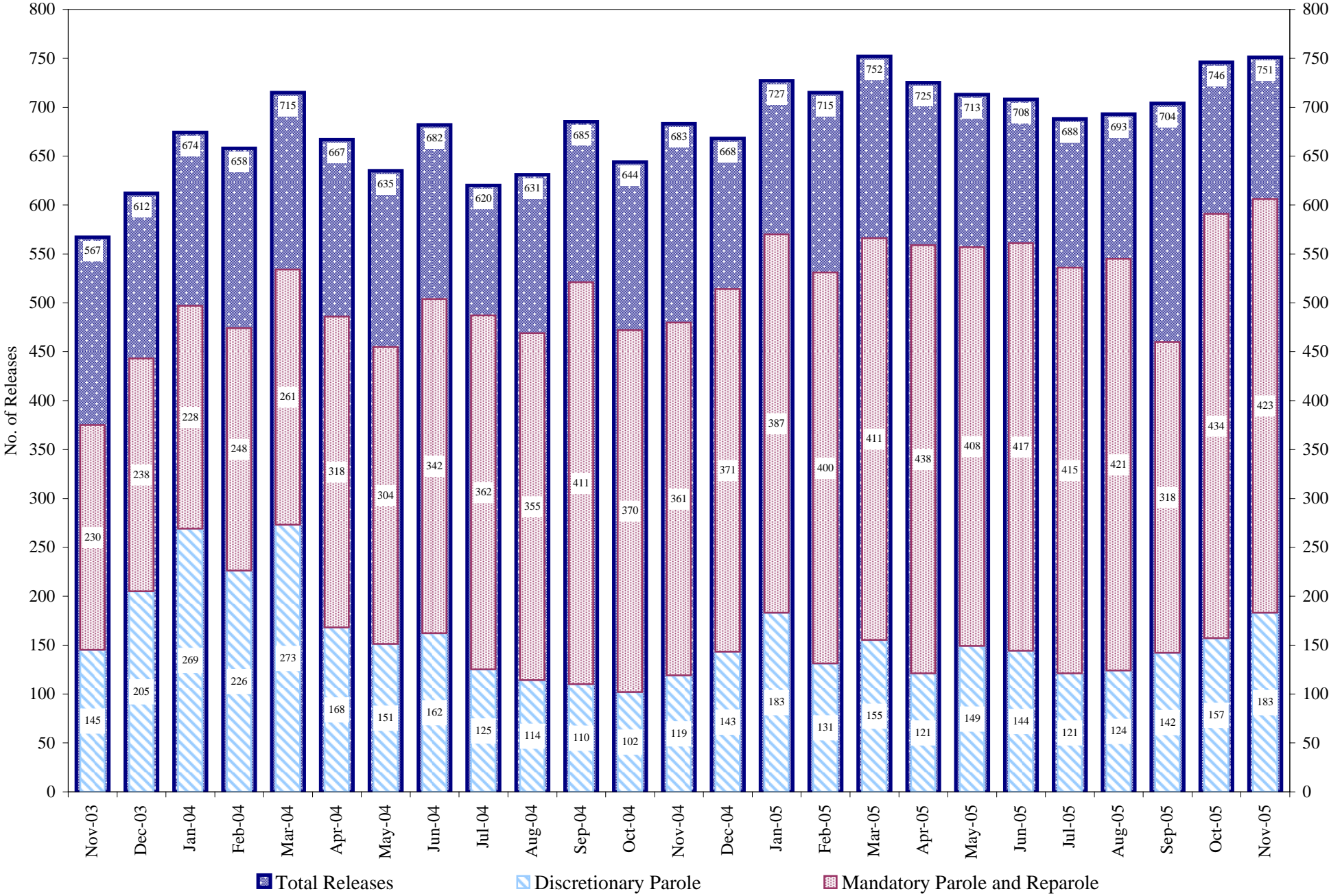
Ct. Ord. Dsch.-Released by court order.

Appeal Bond-Released by court to appeal bond.

Deceased-Offender death in prison.

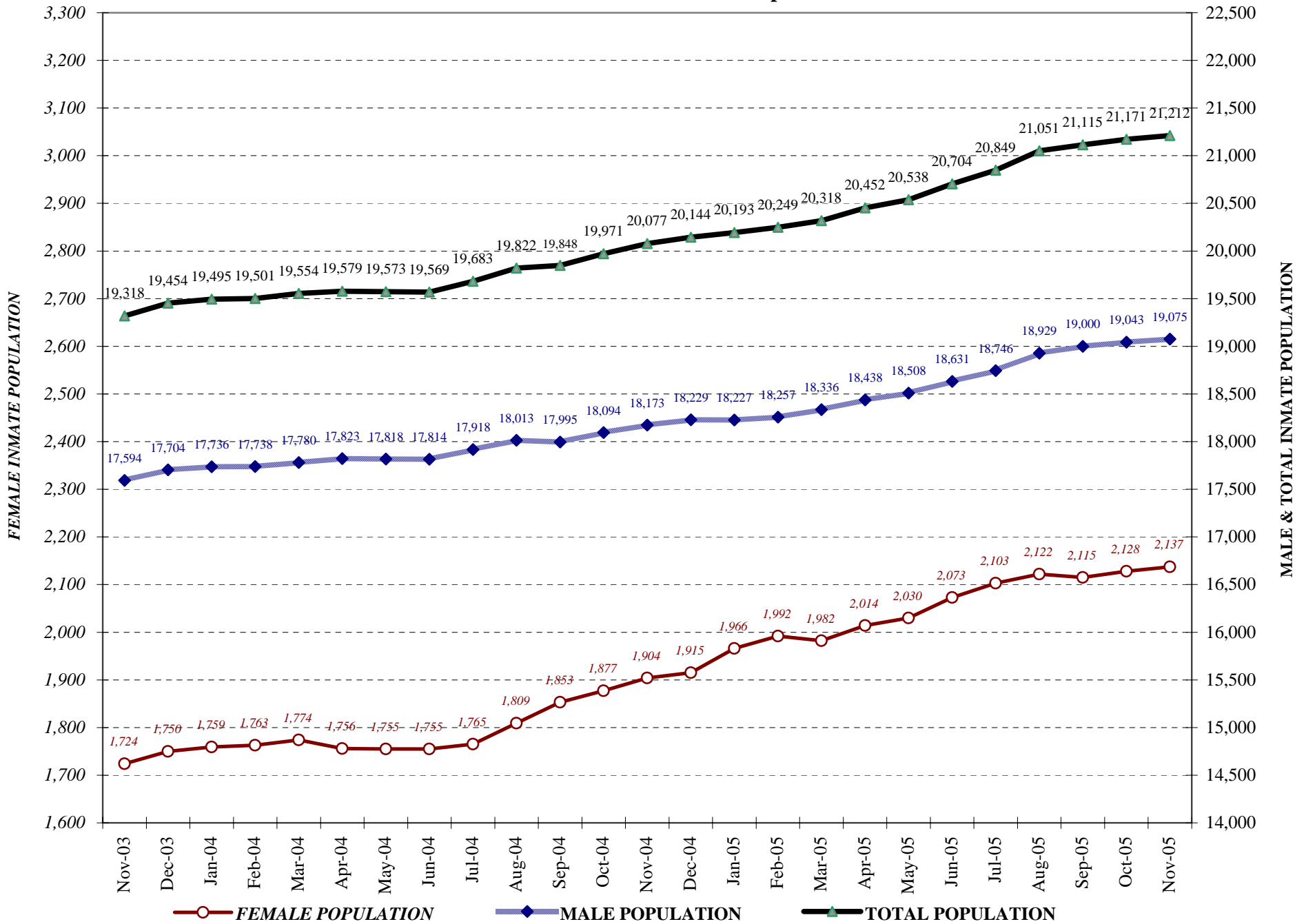
COLORADO DEPARTMENT OF CORRECTIONS

Adult Prison Releases



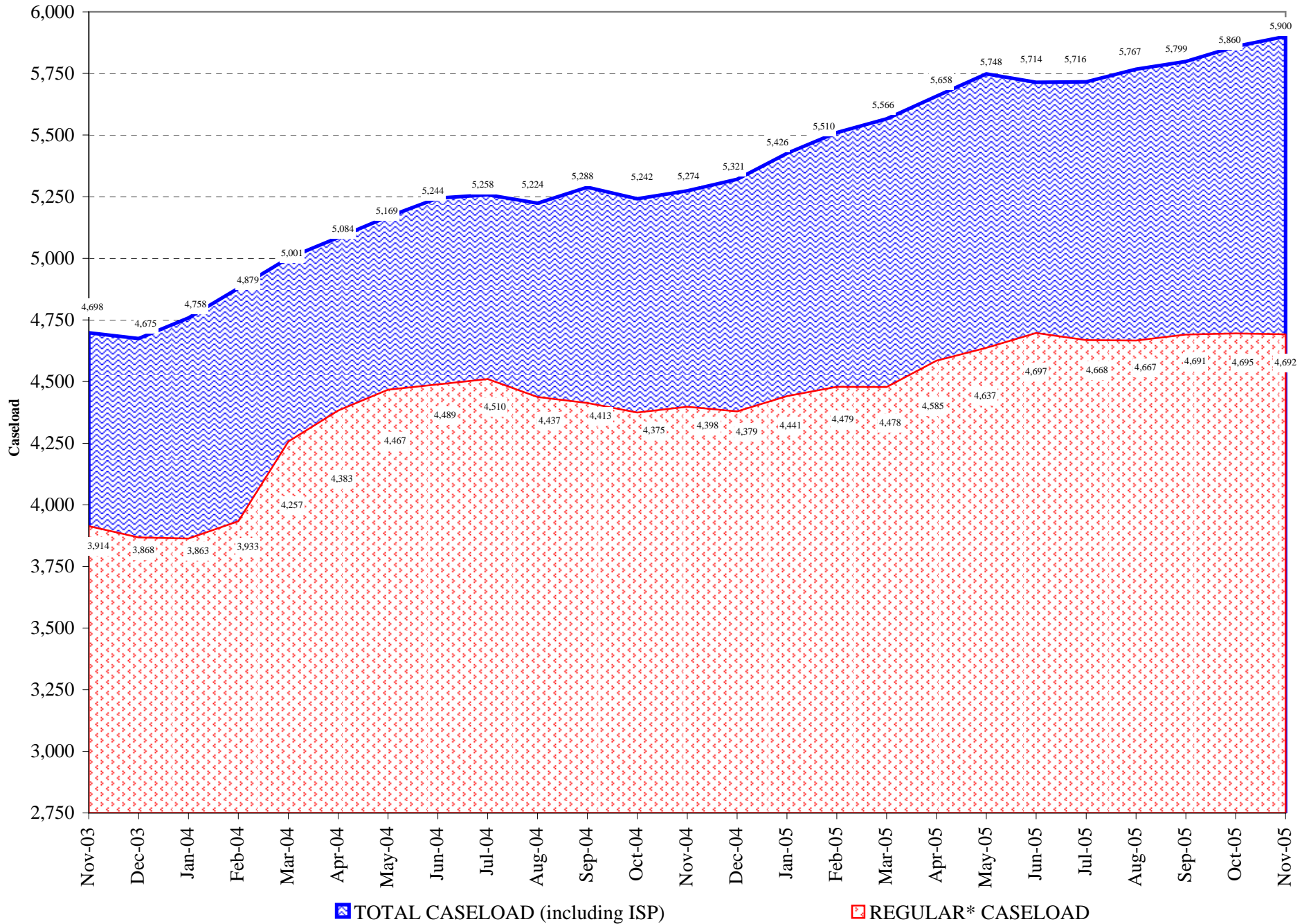
Total releases include releases to discretionary parole, mandatory parole and repara, all types of discharges and other releases as detailed on the previous page.

COLORADO DEPARTMENT OF CORRECTIONS Adult Jurisdiction Inmate Population



COLORADO DEPARTMENT OF CORRECTIONS

Parole Population



*Regular caseload includes interstate parole, but excludes out-of-state parolees and absconders.