

**COLORADO DEPARTMENT OF CORRECTIONS
MONTHLY POPULATION AND CAPACITY REPORT
AS OF AUGUST 31, 2005**

7-Sep-05

	07/31/05	CAPACITY CHANGES	----- 08/31/05 -----		----- 08/31/04 -----	
	OPERATIONAL CAPACITY*		OPERATIONAL CAPACITY*	ON-GRDS POPULATION	OPERATIONAL CAPACITY*	ON-GRDS POPULATION
COLO STATE PENITENTIARY	756		756	746	756	754
CENTENNIAL CORR FAC	320		320	304	320	318
STERLING CORR FAC	2,445		2,445	2,413	2,445	2,416
LIMON CORR FAC	953		953	943	953	948
ARK VALLEY CORR FAC	1,007		1,007	1,004	1,007	1,006
BUENA VISTA CORR FAC	826		826	818	826	822
BUENA VISTA MIN CTR	292		292	287	292	288
COLO TERR CORR FAC	786		786	806	786	797
FORT LYON CORR FAC	500		500	496	500	481
FREMONT CORR FAC	1,471		1,471	1,462	1,471	1,464
ARROWHEAD CORR CTR	494		494	493	494	490
FOUR MILE CORR CTR	499		499	496	499	496
PRE-RELEASE CORR CTR	0		0	0	0	0
PUEBLO MINIMUM CTR	256		256	251	256	254
TRINIDAD CORR FAC	484		484	481	484	479
S.T.U. at Y.O.S.	30		30	25	30	29
SKYLINE CORR CTR	249		249	249	249	247
COLORADO CORR CTR	150		150	146	150	150
DELTA CORR CTR	484		484	475	484	481
RIFLE CORR CTR	192		192	171	192	192
COLO CORR ALT PROGRAM	100		100	110	100	90
COLO WOMEN'S CORR FAC	224		224	223	224	223
DENVER WOMEN'S CORR FAC	900		900	878	900	885
DENVER REC DIAG CTR	480		480	485	480	495
SAN CARLOS CORR FAC	255		255	250	255	247
SUBTOTAL	14,153	0	14,153	14,012	14,153	14,052
CONTRACTS:						
BENT COUNTY CORR CTR	724		724	669	724	673
HUERFANO COUNTY CORR CTR	778		778	671	778	759
CROWLEY COUNTY CORR FAC	1,185		1,185	926	1,185	590
KIT CARSON COUNTY CORR FAC	820		820	740	820	708
GUADALAUPE CO TX CORR FAC	0		0	0	0	0
TALLAHATCHIE MS CORR FAC	0		0	0	121	121
CHEYENNE MTN REENTRY CTR	0	500	500	163	0	0
BRUSH CORR FAC	110	35	145	136	75	25
OFF-GROUNDS POPULATION:				241		208
ESCAPEES/WALKAWAYS				275		229
REVOCATIONS-JAIL				0		3
JAIL BACKLOG:						
BACKLOG LESS THAN 72 HOURS			121		75	
BACKLOG GREATER THAN 72 HOURS (FISCAL YTD AVE = 544)			554		98	
BACKLOG-PAROLEES AWAITING TRANSFER			122		47	
TOTAL JAIL BACKLOG				797		220
COUNTY JAIL CONTRACTS				56		86
COMMUNITY CORRECTIONS						
COMMUNITY						
RESIDENTIAL	1,259	-19	1,240	1,240	1,207	1,207
PAROLE REVOCATIONS	2	0	2	2	7	7
REVOKED-RET TO CUST	200	-5	195	195	128	128
NON-RESIDENTIAL	67	-13	54	54	41	41
REGRESSIONS	30	11	41	41	32	32
TOTAL COMMUNITY	1,558	-26	1,532	1,532	1,415	1,415
ISP						
RESIDENTIAL	773	9	782	782	694	694
NON-RESIDENTIAL	44	-2	42	42	36	36
REGRESSIONS	9	0	9	9	3	3
TOTAL ISP	826	7	833	833	733	733
TOTAL COMM. CORRECTIONS	2,384	-19	2,365	2,365	2,148	2,148
MALE POPULATION			18,929		18,013	
FEMALE POPULATION			2,122		1,809	
TOTAL INMATE JURISDICTIONAL POPULATION				21,051		19,822

*OPERATIONAL CAPACITY INCLUDES ALL BEDS AVAILABLE FOR USE, INCLUDING MANAGEMENT CONTROL UNITS, BUT EXCLUDES EMERGENCY DOUBLE BUNKING

COLORADO DEPARTMENT OF CORRECTIONS
MONTHLY POPULATION AND CAPACITY REPORT
AS OF AUGUST 31, 2005

7-Sep-05

CURRENT MONTH CHANGES IN CAPACITY:

Aug-05	CHEYENNE MTN REENTRY CTR	OPENED CONTRACT CENTER	500
Aug-05	BRUSH CORR FAC	ADDITIONAL CONTRACT BEDS	35

NET MONTHLY GROWTH RATE:

CURRENT MONTH	202
FISCAL YEAR-TO-DATE AVERAGE	174

YOUTHFUL OFFENDER SYSTEM

	----- 08/31/05 -----				08/31/04
	DRDC	PUEBLO	CONTRACT FACILITIES	COMM. CORR.	TOTAL POPULATION
INTAKE/IDO	0	8			8
RFP/REMEDICATION	0	21			21
PHASE I	0	138	0		138
PHASE II	0	13			13
PHASE III		0		32	32
OFF GROUNDS/BACKLOG					2
TOTAL Y.O.S. POPULATION	0	180	0	32	214

	CURRENT MONTH	FISCAL YR. TO DATE
YOS ADMISSIONS	5	8
YOS RELEASES:		
COMPLETION OF SENTENCE	2	8
JUDICIAL RELEASE TO PROB/CT ORD DISCHG	0	1
JUDICIAL TRANSFER TO DOC	0	0
TERMINATION/FAILURE	4	4
DECEASED	1	1
TOTAL RELEASES	7	14

PAROLE CASELOAD

	----- 08/31/05 -----			----- 07/31/05 -----		----- 08/31/04 -----	
	DOMESTIC	INTERST PAR/PROB	TOTAL CASELOAD	DOMESTIC	TOTAL CASELOAD	DOMESTIC	TOTAL CASELOAD
DENVER REGION							
REGULAR	1,718	106	1,824	1,718	1,822	1,685	1,798
ISP	<u>516</u>		<u>516</u>	<u>488</u>	<u>488</u>	<u>326</u>	<u>326</u>
SUBTOTAL	<u>2,234</u>	<u>106</u>	<u>2,340</u>	<u>2,206</u>	<u>2,310</u>	<u>2,011</u>	<u>2,124</u>
NORTHEAST REGION							
REGULAR	1,197	42	1,239	1,206	1,248	1,106	1,160
ISP	<u>306</u>		<u>306</u>	<u>283</u>	<u>283</u>	<u>220</u>	<u>220</u>
SUBTOTAL	<u>1,503</u>	<u>42</u>	<u>1,545</u>	<u>1,489</u>	<u>1,531</u>	<u>1,326</u>	<u>1,380</u>
SOUTHEAST REGION							
REGULAR	1,000	62	1,062	998	1,062	886	956
ISP	<u>193</u>		<u>193</u>	<u>210</u>	<u>210</u>	<u>168</u>	<u>168</u>
SUBTOTAL	<u>1,193</u>	<u>62</u>	<u>1,255</u>	<u>1,208</u>	<u>1,272</u>	<u>1,054</u>	<u>1,124</u>
WESTERN REGION							
REGULAR	491	51	542	485	536	462	523
ISP	<u>85</u>		<u>85</u>	<u>67</u>	<u>67</u>	<u>73</u>	<u>73</u>
SUBTOTAL	<u>576</u>	<u>51</u>	<u>627</u>	<u>552</u>	<u>603</u>	<u>535</u>	<u>596</u>
TOTAL CASELOAD							
REGULAR	4,406	261	4,667	4,407	4,668	4,139	4,437
ISP	<u>1,100</u>		<u>1,100</u>	<u>1,048</u>	<u>1,048</u>	<u>787</u>	<u>787</u>
TOTAL	<u>5,506</u>	<u>261</u>	<u>5,767</u>	<u>5,455</u>	<u>5,716</u>	<u>4,926</u>	<u>5,224</u>
ADDITIONAL CASELOAD:							
OUT-OF-STATE PAROLEES			1,488		1,510		1,407
PAROLEE ABSCONDERS			605		596		561

COLORADO DEPARTMENT OF CORRECTIONS
MONTHLY POPULATION AND CAPACITY REPORT
AS OF AUGUST 31, 2005

7-Sep-05

	08/31/2005 POPULATION			----- FINAL CUSTODY DESIGNATION* -----					
	On-Grds.	Off-Grds	TOTAL	Uncls.	Ad.Seg	Close	Medium	Min.-Res.	Minimum
MALE POPULATION									
COLO STATE PENITENTIARY	746	12	758		750	7	1		
CENTENNIAL CORR FAC	304	2	306		136	152	7	5	6
STERLING CORR FAC	2,413	33	2,446		223	658	547	627	391
LIMON CORR FAC	943	7	950		2	637	204	78	29
ARK VALLEY CORR FAC	1,004	9	1,013		3	430	296	172	112
BUENA VISTA CORR FAC	818	14	832		13	291	307	139	82
BUENA VISTA MIN CTR	287	4	291			0	10	218	63
COLO TERR CORR FAC	803	6	809		10	244	267	182	106
FORT LYON CORR FAC	496	4	500			23	239	166	72
FREMONT CORR FAC	1,462	14	1,476		20	277	440	443	296
ARROWHEAD CORR CTR	493	3	496				7	297	192
FOUR MILE CORR CTR	496	0	496				1	351	144
TRINIDAD CORR FAC	481	3	484				5	405	74
S.T.U. at Y.O.S.	25	0	25				16	7	2
SKYLINE CORR CTR	249	0	249				2	8	239
COLORADO CORR CTR	146	0	146					4	142
DELTA CORR CTR	475	5	480				1		479
RIFLE CORR CTR	171	23	194						194
COLO CORR ALT PROGRAM	108	13	121				1	8	112
DENVER REC DIAG CTR	484	15	499	90	14	72	157	121	45
SAN CARLOS CORR FAC	250	3	253	1	23	88	51	47	43
CONTRACTS:									
BENT COUNTY CORR CTR	669	4	673			12	325	204	132
HUERFANO COUNTY CORR CTR	671	13	684		1	24	401	140	118
CROWLEY COUNTY CORR FAC	926	19	945		7	5	544	256	133
KIT CARSON COUNTY CORR FAC	740	6	746			26	439	173	108
CHEYENNE MTN REENTRY CTR	163	0	163				46	99	18
COMMUNITY/ISP	1,645	78	1,723			9	36	35	1,643
TOTAL MALE POPULATION	17,468	290	17,758	91	1,202	2,955	4,350	4,185	4,975
PERCENT OF TOTAL				0.5%	6.8%	16.6%	24.5%	23.6%	28.0%
FEMALE POPULATION									
COLO WOMEN'S CORR FAC	223	5	228			67	83	45	33
DENVER WOMEN'S CORR FAC	878	14	892	18	28	102	251	302	191
PUEBLO MINIMUM CTR	251	6	257				1	156	100
COLO CORR ALT PROGRAM	2	1	3				2	1	
SAN CARLOS CORR FAC	0	0	0						
DENVER REC DIAG CTR INF	1	0	1						1
COLO TERR CORR FAC INF.	3	0	3				1		2
CONTRACTS:									
BRUSH CORR FAC	136	3	139				54	64	21
COMMUNITY/ISP	377	18	395				9	19	367
TOTAL FEMALE POPULATION	1,871	47	1,918	18	28	169	401	587	715
PERCENT OF TOTAL				0.9%	1.5%	8.8%	20.9%	30.6%	37.3%

*Final custody designations for jail backlog and contracts, fugitive, community regressions, and parole revocations are not reported.

COLORADO DEPARTMENT OF CORRECTIONS
ADULT INMATE JURISDICTIONAL POPULATION (1)

DATE: 9/7/2005

DATE	MALE POPULATION			FEMALE POPULATION			TOTAL POPULATION		
	Male Population	Net Change	Fiscal Y-T-D Average	Female Population	Net Change	Fiscal Y-T-D Average	Total Population	Net Change	Fiscal Y-T-D Average
08-31-05	18,929	183	149	2,122	19	25	21,051	202	174
07-31-05	18,746	115		2,103	30		20,849	145	
06-30-05	18,631	123		2,073	43		20,704	166	
05-31-05	18,508	70		2,030	16		20,538	86	
04-30-05	18,438	102		2,014	32		20,452	134	
03-31-05	18,336	79		1,982	-10		20,318	69	
02-28-05	18,257	30		1,992	26		20,249	56	
01-31-05	18,227	-2		1,966	51		20,193	49	
12-31-04	18,229	56	68	1,915	11	27	20,144	67	95
11-30-04	18,173	79		1,904	27		20,077	106	
10-31-04	18,094	99		1,877	24		19,971	123	
09-30-04	17,995	-18		1,853	44		19,848	26	
08-31-04	18,013	95		1,809	44		19,822	139	
07-31-04	17,918	104		1,765	10		19,683	114	
06-30-04	17,814	-4		1,755	0		19,569	-4	
05-31-04	17,818	-5		1,755	-1		19,573	-6	
04-30-04	17,823	43		1,756	-18		19,579	25	
03-31-04	17,780	42		1,774	11		19,554	53	
02-29-04	17,738	2		1,763	4		19,501	6	
01-31-04	17,736	32		1,759	9		19,495	41	
12-31-03	17,704	110	49	1,750	26	11	19,454	136	60
11-30-03	17,594	9		1,724	16		19,318	25	
10-31-03	17,585	82		1,708	12		19,293	94	
09-30-03	17,503	96		1,696	23		19,199	119	
08-31-03	17,407	89		1,673	23		19,080	112	
07-31-03	17,318	92		1,650	30		18,968	122	
06-30-03	17,226		57	1,620		10	18,846		67
06-30-02	16,539		87	1,506		14	18,045		101
06-30-01	15,493		63	1,340		6	16,833		70
06-30-00	14,733		99	1,266		7	15,999		106
06-30-99	13,547		75	1,179		14	14,726		89
06-30-98	12,647		81	1,016		9	13,663		89
06-30-97	11,681		73	909		12	12,590		84
06-30-96	10,808		67	769		8	11,577		76
06-30-95	10,000		52	669		4	10,669		55
06-30-94	9,382			623			10,005		

(1) Adult inmate jurisdictional population includes on-grounds, off-grounds, out-of-state, escapees, and jail backlog and excludes offenders sentenced to the Youthful Offender System (Y.O.S.).

COLORADO DEPARTMENT OF CORRECTIONS
ADULT INMATE RELEASES FROM PRISON
TOTAL Population (Male and Female)

Date: 9/7/2005

	Parole				Discharge					Other				Total
	Discretionary	Mandatory	Mand. Repar.	Com. Supv.	Sentence	H.B. 1087	Martin/Cooper	Chgs/Det.	Com Spv. Elim	Probation	Ct. Ord. Dsch.	Appeal Bond	Deceased	
Aug-05	124	312	109	0	33	47	17	20	0	14	11	0	6	693
Jul-05	121	306	109	0	46	48	13	13	0	15	9	0	8	688
Jun-05	144	312	105	0	28	57	13	16	0	22	12	0	0	709
May-05	148	313	95	0	42	61	8	14	0	16	7	1	7	712
Apr-05	121	313	125	0	40	57	9	20	0	18	12	0	10	725
Mar-05	155	311	100	0	46	64	15	21	0	24	11	1	4	752
Feb-05	132	290	109	0	58	63	16	14	0	17	12	0	5	716
Jan-05	183	274	113	0	53	54	16	19	0	10	2	0	5	729
Dec-04	143	273	98	0	35	47	15	12	0	24	15	1	6	669
Nov-04	120	287	73	0	53	60	12	17	0	16	9	3	4	654
Oct-04	102	292	78	0	42	66	16	14	0	22	11	0	3	646
Sep-04	110	286	125	0	47	48	15	25	0	20	6	0	3	685
Aug-04	115	266	88	0	52	54	15	17	0	13	7	0	4	631
Jul-04	125	227	135	0	41	52	7	10	0	14	8	0	1	620
Jun-04	161	282	61	0	61	55	17	20	0	9	13	0	3	682
May-04	151	304	n/a	0	42	82	18	13	0	24	0	0	1	635
Apr-04	168	318	n/a	0	50	64	17	12	1	16	14	0	7	667
Mar-04	273	261	n/a	0	47	63	14	25	4	14	10	1	3	715
Feb-04	226	248	n/a	0	50	72	16	11	2	12	15	0	6	658
Jan-04	269	228	n/a	0	38	72	18	14	4	13	14	0	4	674
Dec-03	205	238	n/a	0	40	56	12	19	3	26	9	1	3	612
Nov-03	145	230	n/a	0	59	66	18	19	5	12	13	0	0	567
Oct-03	193	231	n/a	0	49	68	15	19	4	23	8	0	4	614
Sep-03	182	221	n/a	0	42	52	10	9	2	21	9	0	4	552
Aug-03	160	207	n/a	0	53	61	14	14	4	19	14	0	5	551
Jul-03	212	190	n/a	0	45	57	19	13	9	17	9	2	4	577

Definitions of Release Types

Discretionary parole-Released to parole through Parole Board discretion prior to mandatory release or sentence discharge date.

Mandatory parole-Released to parole on mandatory release date.

Mand. Repar-Reparoled on specific date set by Parole Board (includes S.B. 252 reparoles). n/a - breakout not available prior to June 2004.

Com. Supv.-Released to serve 12 months of community supervision.

Sentence discharge-Completion of sentence with no further supervision.

H.B. 1087 discharge-Completion of sentence with no further supervision, subject to earn time provisions of H.B. 95-1087.

Martin/ Cooper discharge-Completion of sentence with no further supervision, sex offender subject to Martin/Cooper Supreme Court decision.

Chgs/ Det. discharge-Completion of sentence, released to other law enforcement for pending charges or detainees.

Com. Spv. Elim discharge-Completion of sentence following reincarceration on community supervision sentence.

Probation-Released by court to probation.

Ct. Ord. Dsch.-Released by court order.

Appeal Bond-Released by court to appeal bond.

Deceased-Offender death in prison.

COLORADO DEPARTMENT OF CORRECTIONS
ADULT INMATE RELEASES FROM PRISON
Male Population Only

Date: 9/7/2005

	Parole				Discharge					Other				Total
	Discretionary	Mandatory	Mand. Repar.	Com. Supv.	Sentence	H.B. 1087	Martin/Cooper	Chgs/Det.	Com Spv. Elim	Probation	Ct. Ord. Dsch.	Appeal Bond	Deceased	
Aug-05	98	280	94	0	31	41	17	19	0	12	8	0	6	606
Jul-05	100	253	95	0	43	47	13	13	0	11	8	0	8	591
Jun-05	113	280	94	0	25	52	13	13	0	20	12	0	0	622
May-05	127	270	83	0	39	54	8	14	0	15	6	1	6	623
Apr-05	103	270	109	0	37	49	9	20	0	16	8	0	10	631
Mar-05	129	275	82	0	43	62	15	19	0	23	10	1	4	663
Feb-05	109	259	100	0	53	57	16	13	0	15	11	0	5	638
Jan-05	159	250	99	0	50	48	16	18	0	8	2	0	4	654
Dec-04	118	238	82	0	33	46	15	12	0	21	14	0	6	585
Nov-04	103	250	63	0	50	56	12	16	0	15	8	3	4	580
Oct-04	83	270	67	0	38	61	16	14	0	20	10	0	3	582
Sep-04	95	262	114	0	44	44	15	23	0	16	5	0	1	619
Aug-04	97	238	76	0	49	50	15	17	0	11	5	0	4	562
Jul-04	106	198	121	0	39	44	7	10	0	12	7	0	1	545
Jun-04	n/a	n/a	n/a	0	n/a	n/a	n/a	n/a	n/a	n/a	n/a	n/a	n/a	n/a
May-04	n/a	n/a	n/a	0	n/a	n/a	n/a	n/a	n/a	n/a	n/a	n/a	n/a	n/a
Apr-04	n/a	n/a	n/a	0	n/a	n/a	n/a	n/a	n/a	n/a	n/a	n/a	n/a	n/a
Mar-04	n/a	n/a	n/a	0	n/a	n/a	n/a	n/a	n/a	n/a	n/a	n/a	n/a	n/a
Feb-04	n/a	n/a	n/a	0	n/a	n/a	n/a	n/a	n/a	n/a	n/a	n/a	n/a	n/a
Jan-04	n/a	n/a	n/a	0	n/a	n/a	n/a	n/a	n/a	n/a	n/a	n/a	n/a	n/a
Dec-03	n/a	n/a	n/a	0	n/a	n/a	n/a	n/a	n/a	n/a	n/a	n/a	n/a	n/a
Nov-03	n/a	n/a	n/a	0	n/a	n/a	n/a	n/a	n/a	n/a	n/a	n/a	n/a	n/a
Oct-03	n/a	n/a	n/a	0	n/a	n/a	n/a	n/a	n/a	n/a	n/a	n/a	n/a	n/a
Sep-03	n/a	n/a	n/a	0	n/a	n/a	n/a	n/a	n/a	n/a	n/a	n/a	n/a	n/a
Aug-03	n/a	n/a	n/a	0	n/a	n/a	n/a	n/a	n/a	n/a	n/a	n/a	n/a	n/a
Jul-03	n/a	n/a	n/a	0	n/a	n/a	n/a	n/a	n/a	n/a	n/a	n/a	n/a	n/a

Definitions of Release Types

Discretionary parole-Released to parole through Parole Board discretion prior to mandatory release or sentence discharge date.

Mandatory parole-Released to parole on mandatory release date.

Mand. Repar-Reparoled on specific date set by Parole Board (includes S.B. 252 reparoles). n/a - breakout not available prior to June 2004.

Com. Supv.-Released to serve 12 months of community supervision.

Sentence discharge-Completion of sentence with no further supervision.

H.B. 1087 discharge-Completion of sentence with no further supervision, subject to earn time provisions of H.B. 95-1087.

Martin/ Cooper discharge-Completion of sentence with no further supervision, sex offender subject to Martin/Cooper Supreme Court decision.

Chgs/ Det. discharge-Completion of sentence, released to other law enforcement for pending charges or detainees.

Com. Spv. Elim discharge-Completion of sentence following reincarceration on community supervision sentence.

Probation-Released by court to probation.

Ct. Ord. Dsch.-Released by court order.

Appeal Bond-Released by court to appeal bond.

Deceased-Offender death in prison.

COLORADO DEPARTMENT OF CORRECTIONS
ADULT INMATE RELEASES FROM PRISON
Female Population Only

Date: 9/7/2005

	Parole				Discharge					Other				Total
	Discretionary	Mandatory	Mand. Repar.	Com. Supv.	Sentence	H.B. 1087	Martin/Cooper	Chgs/Det.	Com Spv. Elim	Probation	Ct. Ord. Dsch.	Appeal Bond	Deceased	
Aug-05	26	32	15	0	2	6	0	1	0	2	3	0	0	87
Jul-05	21	53	14	0	3	1	0	0	0	4	1	0	0	97
Jun-05	31	32	11	0	3	5	0	3	0	2	0	0	0	87
May-05	21	43	12	0	3	7	0	0	0	1	1	0	1	89
Apr-05	18	43	16	0	3	8	0	0	0	2	4	0	0	94
Mar-05	26	36	18	0	3	2	0	2	0	1	1	0	0	89
Feb-05	23	31	9	0	5	6	0	1	0	2	1	0	0	78
Jan-05	24	24	14	0	3	6	0	1	0	2	0	0	1	75
Dec-04	25	35	16	0	2	1	0	0	0	3	1	1	0	84
Nov-04	17	37	10	0	3	4	0	1	0	1	1	0	0	74
Oct-04	19	22	11	0	4	5	0	0	0	2	1	0	0	64
Sep-04	15	24	11	0	3	4	0	2	0	4	1	0	2	66
Aug-04	18	28	12	0	3	4	0	0	0	2	2	0	0	69
Jul-04	19	29	14	0	2	8	0	0	0	2	1	0	0	75
Jun-04	n/a	n/a	n/a	0	n/a	n/a	n/a	n/a	n/a	n/a	n/a	n/a	n/a	n/a
May-04	n/a	n/a	n/a	0	n/a	n/a	n/a	n/a	n/a	n/a	n/a	n/a	n/a	n/a
Apr-04	n/a	n/a	n/a	0	n/a	n/a	n/a	n/a	n/a	n/a	n/a	n/a	n/a	n/a
Mar-04	n/a	n/a	n/a	0	n/a	n/a	n/a	n/a	n/a	n/a	n/a	n/a	n/a	n/a
Feb-04	n/a	n/a	n/a	0	n/a	n/a	n/a	n/a	n/a	n/a	n/a	n/a	n/a	n/a
Jan-04	n/a	n/a	n/a	0	n/a	n/a	n/a	n/a	n/a	n/a	n/a	n/a	n/a	n/a
Dec-03	n/a	n/a	n/a	0	n/a	n/a	n/a	n/a	n/a	n/a	n/a	n/a	n/a	n/a
Nov-03	n/a	n/a	n/a	0	n/a	n/a	n/a	n/a	n/a	n/a	n/a	n/a	n/a	n/a
Oct-03	n/a	n/a	n/a	0	n/a	n/a	n/a	n/a	n/a	n/a	n/a	n/a	n/a	n/a
Sep-03	n/a	n/a	n/a	0	n/a	n/a	n/a	n/a	n/a	n/a	n/a	n/a	n/a	n/a
Aug-03	n/a	n/a	n/a	0	n/a	n/a	n/a	n/a	n/a	n/a	n/a	n/a	n/a	n/a
Jul-03	n/a	n/a	n/a	0	n/a	n/a	n/a	n/a	n/a	n/a	n/a	n/a	n/a	n/a

Definitions of Release Types

Discretionary parole-Released to parole through Parole Board discretion prior to mandatory release or sentence discharge date.

Mandatory parole-Released to parole on mandatory release date.

Mand. Repar-Reparoled on specific date set by Parole Board (includes S.B. 252 reparoles). n/a - breakout not available prior to June 2004.

Com. Supv.-Released to serve 12 months of community supervision.

Sentence discharge-Completion of sentence with no further supervision.

H.B. 1087 discharge-Completion of sentence with no further supervision, subject to earn time provisions of H.B. 95-1087.

Martin/ Cooper discharge-Completion of sentence with no further supervision, sex offender subject to Martin/Cooper Supreme Court decision.

Chgs/ Det. discharge-Completion of sentence, released to other law enforcement for pending charges or detainees.

Com. Spv. Elim discharge-Completion of sentence following reincarceration on community supervision sentence.

Probation-Released by court to probation.

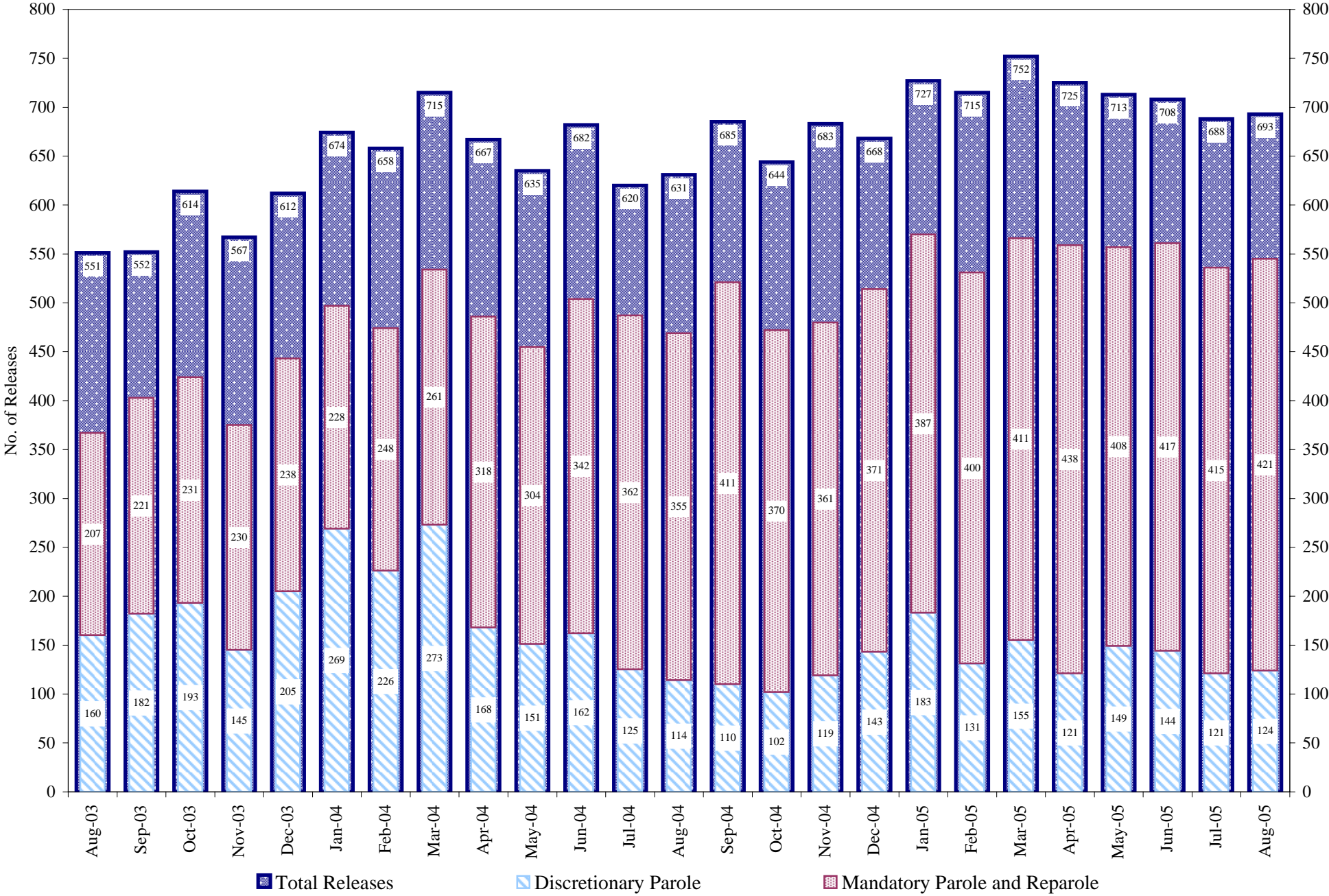
Ct. Ord. Dsch.-Released by court order.

Appeal Bond-Released by court to appeal bond.

Deceased-Offender death in prison.

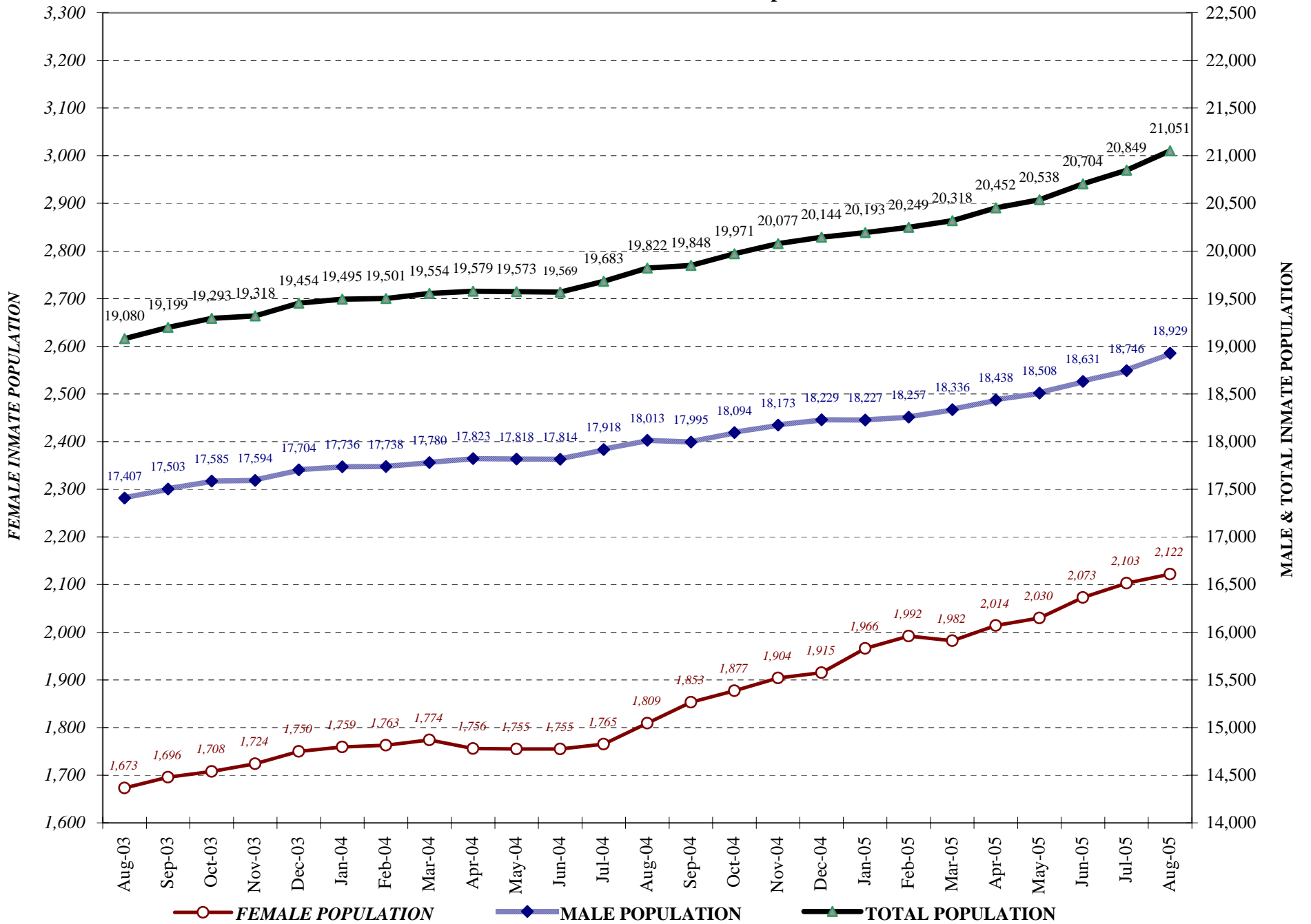
COLORADO DEPARTMENT OF CORRECTIONS

Adult Prison Releases



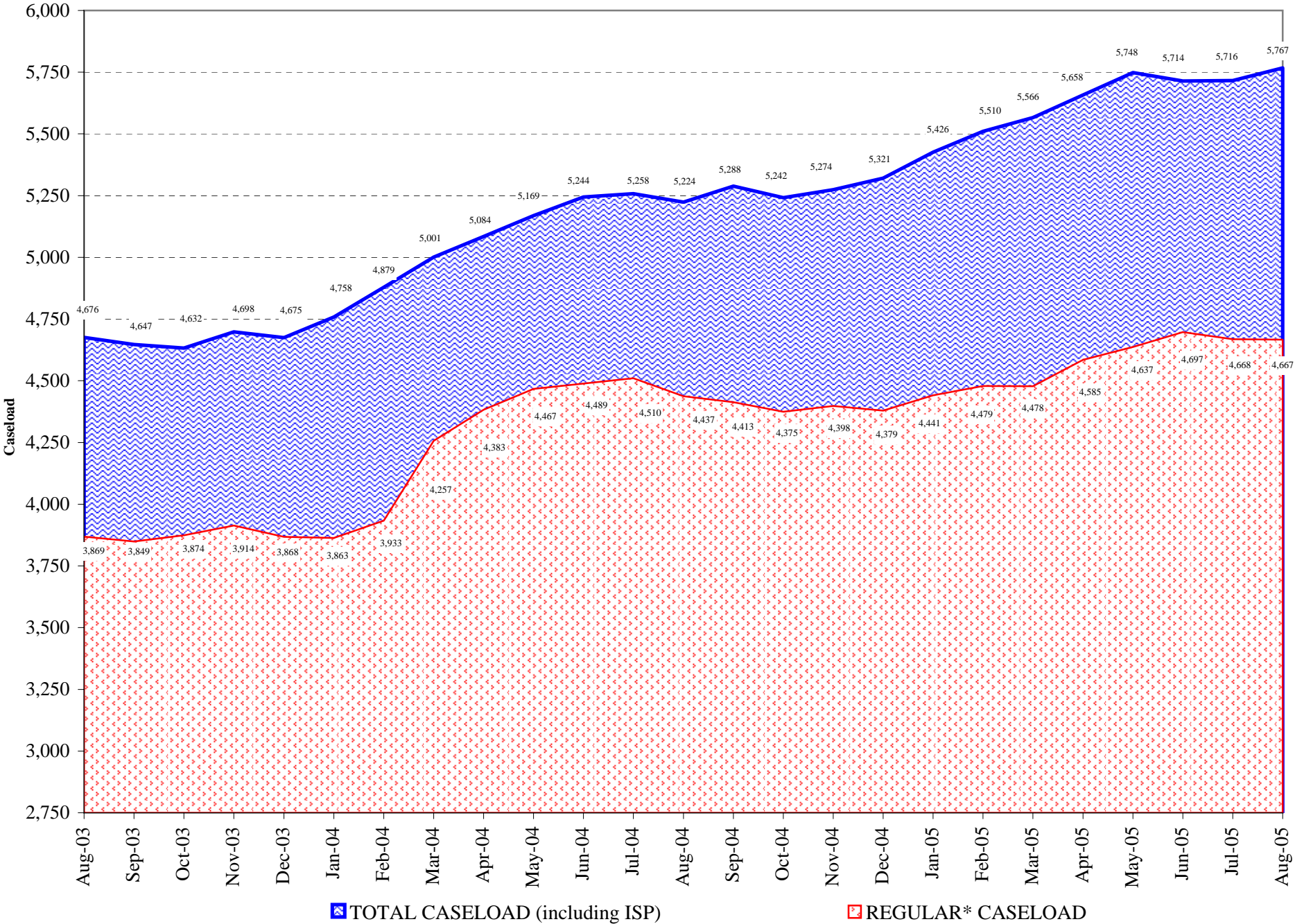
Total releases include releases to discretionary parole, mandatory parole and reparole, all types of discharges and other releases as detailed on the previous page.

COLORADO DEPARTMENT OF CORRECTIONS Adult Jurisdiction Inmate Population



COLORADO DEPARTMENT OF CORRECTIONS

Parole Population



*Regular caseload includes interstate parole, but excludes out-of-state parolees and absconders.