

**COLORADO DEPARTMENT OF CORRECTIONS  
MONTHLY POPULATION AND CAPACITY REPORT  
AS OF JULY 31, 2005**

28-Jul-08

	06/30/05	CAPACITY CHANGES	------ 07/31/05 -----		------ 07/31/04 -----	
	OPERATIONAL CAPACITY*		OPERATIONAL CAPACITY*	ON-GRDS POPULATION	OPERATIONAL CAPACITY*	ON-GRDS POPULATION
COLO STATE PENITENTIARY	756		756	753	756	754
CENTENNIAL CORR FAC	320		320	273	320	335
STERLING CORR FAC	2,445		2,445	2,407	2,445	2,411
LIMON CORR FAC	953		953	950	953	937
ARK VALLEY CORR FAC	1,007		1,007	1,001	1,007	995
BUENA VISTA CORR FAC	826		826	823	826	812
BUENA VISTA MIN CTR	292		292	287	292	288
COLO TERR CORR FAC	786		786	807	786	764
FORT LYON CORR FAC	500		500	496	500	485
FREMONT CORR FAC	1,471		1,471	1,452	1,471	1,462
ARROWHEAD CORR CTR	494		494	489	494	490
FOUR MILE CORR CTR	499		499	494	499	495
PRE-RELEASE CORR CTR	0		0	0	0	0
PUEBLO MINIMUM CTR	256		256	252	256	250
TRINIDAD CORR FAC	484		484	476	484	474
S.T.U. at Y.O.S.	30		30	30	30	17
SKYLINE CORR CTR	249		249	247	249	248
COLORADO CORR CTR	150		150	146	150	149
DELTA CORR CTR	484		484	472	484	478
RIFLE CORR CTR	192		192	187	192	185
COLO CORR ALT PROGRAM	100		100	115	100	124
COLO WOMEN'S CORR FAC	224		224	216	224	217
DENVER WOMEN'S CORR FAC	900		900	869	900	863
DENVER REC DIAG CTR	480		480	504	480	470
SAN CARLOS CORR FAC	255		255	249	255	246
<b>***SUBTOTAL***</b>	<b>14,153</b>	<b>0</b>	<b>14,153</b>	<b>13,995</b>	<b>14,153</b>	<b>13,949</b>
<b>CONTRACTS:</b>						
BENT COUNTY CORR CTR	724		724	694	724	581
HUERFANO COUNTY CORR CTR	778		778	729	778	734
CROWLEY COUNTY CORR FAC	1,185		1,185	998	1,185	658
KIT CARSON COUNTY CORR FAC	820		820	782	820	542
GUADALAUPE CO TX CORR FAC	0		0	0	0	0
TALLAHATCHIE MS CORR FAC	0		0	0	0	0
BRUSH CORR FAC	110		110	118	0	0
<b>OFF-GROUNDS POPULATION:</b>						
ESCAPEES/WALKAWAYS				214		220
REVOCATIONS-JAIL				254		202
				0		10
<b>JAIL BACKLOG:</b>						
BACKLOG LESS THAN 72 HOURS			142		90	
BACKLOG GREATER THAN 72 HOURS (FISCAL YTD AVE = 494)			381		192	
BACKLOG-PAROLEES AWAITING TRANSFER			105		91	
<b>TOTAL JAIL BACKLOG</b>				628		373
<b>COUNTY JAIL CONTRACTS</b>				53		56
<b>COMMUNITY CORRECTIONS</b>						
<b>COMMUNITY</b>						
RESIDENTIAL	1,226	33	1,259	1,259	1,001	1,001
PAROLE REVOCATIONS	2	0	2	2	3	3
REVOKED-RET TO CUST	197	3	200	200	0	0
NON-RESIDENTIAL	56	11	67	67	63	63
REGRESSIONS	43	-13	30	30	39	39
<b>TOTAL COMMUNITY</b>	<b>1,524</b>	<b>34</b>	<b>1,558</b>	<b>1,558</b>	<b>1,106</b>	<b>1,106</b>
<b>ISP</b>						
RESIDENTIAL	772	1	773	773	678	678
NON-RESIDENTIAL	43	1	44	44	33	33
REGRESSIONS	8	1	9	9	8	8
<b>TOTAL ISP</b>	<b>823</b>	<b>3</b>	<b>826</b>	<b>826</b>	<b>719</b>	<b>719</b>
<b>TOTAL COMM. CORRECTIONS</b>	<b>2,347</b>	<b>37</b>	<b>2,384</b>	<b>2,384</b>	<b>1,825</b>	<b>1,825</b>
MALE POPULATION			<b>18,746</b>		17,318	
FEMALE POPULATION			<b>2,103</b>		1,650	
<b>**TOTAL INMATE JURISDICTIONAL POPULATION**</b>				<b>20,849</b>		<b>18,968</b>

\*OPERATIONAL CAPACITY INCLUDES ALL BEDS AVAILABLE FOR USE, INCLUDING MANAGEMENT CONTROL UNITS, BUT EXCLUDES EMERGENCY DOUBLE BUNKING

**COLORADO DEPARTMENT OF CORRECTIONS**  
**MONTHLY POPULATION AND CAPACITY REPORT**  
**AS OF JULY 31, 2005**

28-Jul-08

CURRENT MONTH CHANGES IN CAPACITY:

**NET MONTHLY GROWTH RATE:**

CURRENT MONTH	145
FISCAL YEAR-TO-DATE AVERAGE	145

**YOUTHFUL OFFENDER SYSTEM**

	----- 07/31/05 -----					07/31/04
	DRDC	PUEBLO	CONTRACT FACILITIES	COMM. CORR.	TOTAL POPULATION	TOTAL POPULATION
INTAKE/IDO	0	5			5	8
RFP/REMEDICATION	0	13			13	7
PHASE I	0	144	0		144	155
PHASE II	0	14			14	18
PHASE III		0		37	37	42
OFF GROUNDS/BACKLOG					4	2
<b>**TOTAL Y.O.S. POPULATION**</b>	<b>0</b>	<b>176</b>	<b>0</b>	<b>37</b>	<b>217</b>	<b>232</b>

	CURRENT MONTH	FISCAL YR. TO DATE
YOS ADMISSIONS	3	3
YOS RELEASES:		
COMPLETION OF SENTENCE	6	6
JUDICIAL RELEASE TO PROB/CT ORD DISCHG	1	1
JUDICIAL TRANSFER TO DOC	0	0
TERMINATION/FAILURE	0	0
DECEASED	0	0
TOTAL RELEASES	7	7

**PAROLE CASELOAD**

	----- 07/31/05 -----			----- 06/30/05 -----		----- 07/31/04 -----	
	DOMESTIC	INTERST PAR/PROB	TOTAL CASELOAD	DOMESTIC	TOTAL CASELOAD	DOMESTIC	TOTAL CASELOAD
DENVER REGION							
REGULAR	1,718	104	1,822	1,739	1,842	1,715	1,832
ISP	488		488	467	467	328	328
SUBTOTAL	2,206	104	2,310	2,206	2,309	2,043	2,160
NORTHEAST REGION							
REGULAR	1,206	42	1,248	1,195	1,239	1,144	1,198
ISP	283		283	268	268	193	193
SUBTOTAL	1,489	42	1,531	1,463	1,507	1,337	1,391
SOUTHEAST REGION							
REGULAR	998	64	1,062	1,009	1,072	887	953
ISP	210		210	213	213	163	163
SUBTOTAL	1,208	64	1,272	1,222	1,285	1,050	1,116
WESTERN REGION							
REGULAR	485	51	536	494	544	471	527
ISP	67		67	69	69	64	64
SUBTOTAL	552	51	603	563	613	535	591
TOTAL CASELOAD							
REGULAR	4,407	261	4,668	4,437	4,697	4,217	4,510
ISP	1,048		1,048	1,017	1,017	748	748
TOTAL	5,455	261	5,716	5,454	5,714	4,965	5,258
ADDITIONAL CASELOAD:							
OUT-OF-STATE PAROLEES			1,510		1,506		1,406
PAROLEE ABSCONDERS			596		591		595

**COLORADO DEPARTMENT OF CORRECTIONS**  
**MONTHLY POPULATION AND CAPACITY REPORT**  
**AS OF JULY 31, 2005**

28-Jul-08

	07/31/2005 POPULATION			----- FINAL CUSTODY DESIGNATION* -----					
	On-Grds.	Off-Grds	TOTAL	Uncls.	Ad.Seg	Close	Medium	Min.-Res.	Minimum
<b>MALE POPULATION</b>									
COLO STATE PENITENTIARY	753	5	758			757	1		
CENTENNIAL CORR FAC	273	0	273			91	151	12	7
STERLING CORR FAC	2,407	34	2,441			230	667	524	636
LIMON CORR FAC	950	8	958			19	617	210	81
ARK VALLEY CORR FAC	1,001	8	1,009			3	431	279	180
BUENA VISTA CORR FAC	823	14	837			19	282	291	162
BUENA VISTA MIN CTR	287	4	291					2	224
COLO TERR CORR FAC	807	9	816			12	252	272	174
FORT LYON CORR FAC	496	3	499				21	243	168
FREMONT CORR FAC	1,452	16	1,468			23	280	440	434
ARROWHEAD CORR CTR	489	5	494				1	5	301
FOUR MILE CORR CTR	494	4	498					3	353
TRINIDAD CORR FAC	476	5	481					0	409
S.T.U. at Y.O.S.	30	0	30					4	23
SKYLINE CORR CTR	247	1	248						6
COLORADO CORR CTR	146	0	146						1
DELTA CORR CTR	472	3	475				1	2	1
RIFLE CORR CTR	187	0	187						
COLO CORR ALT PROGRAM	112	8	120						9
DENVER REC DIAG CTR	502	14	516	118	17	53	123	149	56
SAN CARLOS CORR FAC	249	3	252	1	22	86	59	43	41
CONTRACTS:									
BENT COUNTY CORR CTR	694	14	708				11	360	211
HUERFANO COUNTY CORR CTR	729	18	747			1	15	422	184
CROWLEY COUNTY CORR FAC	998	16	1,014			21	5	612	242
KIT CARSON COUNTY CORR FAC	782	7	789			2	14	470	193
TALLAHATCHIE MS CORR FAC	0	0	0						
COMMUNITY/ISP	1,657	96	1,753				7	39	37
<b>TOTAL MALE POPULATION</b>	<b>17,513</b>	<b>295</b>	<b>17,808</b>	<b>119</b>	<b>1,217</b>	<b>2,895</b>	<b>4,372</b>	<b>4,228</b>	<b>4,977</b>
<b>PERCENT OF TOTAL</b>				<b>0.7%</b>	<b>6.8%</b>	<b>16.3%</b>	<b>24.6%</b>	<b>23.7%</b>	<b>27.9%</b>
<b>FEMALE POPULATION</b>									
COLO WOMEN'S CORR FAC	216	3	219				64	86	41
DENVER WOMEN'S CORR FAC	869	10	879	17	27	101	247	305	182
PUEBLO MINIMUM CTR	252	0	252				1	145	106
COLO CORR ALT PROGRAM	3	1	4						4
SAN CARLOS CORR FAC	0	0	0						
DENVER REC DIAG CTR INF	2	0	2						2
COLO TERR CORR FAC INF.	0	0	0						
CONTRACTS:									
BRUSH CORR FAC	118	1	119					43	53
COMMUNITY/ISP	375	15	390					10	13
<b>TOTAL FEMALE POPULATION</b>	<b>1,835</b>	<b>30</b>	<b>1,865</b>	<b>17</b>	<b>27</b>	<b>165</b>	<b>387</b>	<b>557</b>	<b>712</b>
<b>PERCENT OF TOTAL</b>				<b>0.9%</b>	<b>1.4%</b>	<b>8.8%</b>	<b>20.8%</b>	<b>29.9%</b>	<b>38.2%</b>

\*Final custody designations for jail backlog and contracts, fugitive, community regressions, and parole revocations are not reported.

**COLORADO DEPARTMENT OF CORRECTIONS**  
**ADULT INMATE JURISDICTIONAL POPULATION (1)**

DATE: 7/28/2008

DATE	MALE POPULATION			FEMALE POPULATION			TOTAL POPULATION		
	Male Population	Net Change	Fiscal Y-T-D Average	Female Population	Net Change	Fiscal Y-T-D Average	Total Population	Net Change	Fiscal Y-T-D Average
<b>07-31-05</b>	<b>18,746</b>	<b>115</b>	<b>115</b>	<b>2,103</b>	<b>30</b>	<b>30</b>	<b>20,849</b>	<b>145</b>	<b>145</b>
<b>06-30-05</b>	<b>18,631</b>	<b>123</b>		<b>2,073</b>	<b>43</b>		<b>20,704</b>	<b>166</b>	
05-31-05	18,508	70		2,030	16		20,538	86	
04-30-05	18,438	102		2,014	32		20,452	134	
03-31-05	18,336	79		1,982	-10		20,318	69	
02-28-05	18,257	30		1,992	26		20,249	56	
01-31-05	18,227	-2		1,966	51		20,193	49	
12-31-04	18,229	56	<b>68</b>	1,915	11	<b>27</b>	20,144	67	<b>95</b>
11-30-04	18,173	79		1,904	27		20,077	106	
10-31-04	18,094	99		1,877	24		19,971	123	
09-30-04	17,995	-18		1,853	44		19,848	26	
08-31-04	18,013	95		1,809	44		19,822	139	
07-31-04	17,918	104		1,765	10		19,683	114	
<b>06-30-04</b>	<b>17,814</b>	<b>-4</b>		<b>1,755</b>	<b>0</b>		<b>19,569</b>	<b>-4</b>	
05-31-04	17,818	-5		1,755	-1		19,573	-6	
04-30-04	17,823	43		1,756	-18		19,579	25	
03-31-04	17,780	42		1,774	11		19,554	53	
02-29-04	17,738	2		1,763	4		19,501	6	
01-31-04	17,736	32		1,759	9		19,495	41	
12-31-03	17,704	110	<b>49</b>	1,750	26	<b>11</b>	19,454	136	<b>60</b>
11-30-03	17,594	9		1,724	16		19,318	25	
10-31-03	17,585	82		1,708	12		19,293	94	
09-30-03	17,503	96		1,696	23		19,199	119	
08-31-03	17,407	89		1,673	23		19,080	112	
07-31-03	17,318	92		1,650	30		18,968	122	
<b>06-30-03</b>	<b>17,226</b>		<b>57</b>	<b>1,620</b>		<b>10</b>	<b>18,846</b>		<b>67</b>
<b>06-30-02</b>	<b>16,539</b>		<b>87</b>	<b>1,506</b>		<b>14</b>	<b>18,045</b>		<b>101</b>
<b>06-30-01</b>	<b>15,493</b>		<b>63</b>	<b>1,340</b>		<b>6</b>	<b>16,833</b>		<b>70</b>
<b>06-30-00</b>	<b>14,733</b>		<b>99</b>	<b>1,266</b>		<b>7</b>	<b>15,999</b>		<b>106</b>
<b>06-30-99</b>	<b>13,547</b>		<b>75</b>	<b>1,179</b>		<b>14</b>	<b>14,726</b>		<b>89</b>
<b>06-30-98</b>	<b>12,647</b>		<b>81</b>	<b>1,016</b>		<b>9</b>	<b>13,663</b>		<b>89</b>
<b>06-30-97</b>	<b>11,681</b>		<b>73</b>	<b>909</b>		<b>12</b>	<b>12,590</b>		<b>84</b>
<b>06-30-96</b>	<b>10,808</b>		<b>67</b>	<b>769</b>		<b>8</b>	<b>11,577</b>		<b>76</b>
<b>06-30-95</b>	<b>10,000</b>		<b>52</b>	<b>669</b>		<b>4</b>	<b>10,669</b>		<b>55</b>
<b>06-30-94</b>	<b>9,382</b>			<b>623</b>			<b>10,005</b>		

(1) Adult inmate jurisdictional population includes on-grounds, off-grounds, out-of-state, escapees, and jail backlog and excludes offenders sentenced to the Youthful Offender System (Y.O.S.).

**COLORADO DEPARTMENT OF CORRECTIONS**  
**ADULT INMATE RELEASES FROM PRISON**  
**TOTAL Population (Male and Female)**

Date: 7/28/2008

	Parole				Discharge					Other				Total
	Discretionary	Mandatory	Mand. Repar.	Com. Supv.	Sentence	H.B. 1087	Martin/Cooper	Chgs/Det.	Com Spv. Elim	Probation	Ct. Ord. Dsch.	Appeal Bond	Deceased	
Jul-05	121	306	109	0	46	48	13	13	0	15	9	0	8	688
Jun-05	144	312	105	0	28	57	13	16	0	22	12	0	0	709
May-05	148	313	95	0	42	61	8	14	0	16	7	1	7	712
Apr-05	121	313	125	0	40	57	9	20	0	18	12	0	10	725
Mar-05	155	311	100	0	46	64	15	21	0	24	11	1	4	752
Feb-05	132	290	109	0	58	63	16	14	0	17	12	0	5	716
Jan-05	183	274	113	0	53	54	16	19	0	10	2	0	5	729
Dec-04	143	273	98	0	35	47	15	12	0	24	15	1	6	669
Nov-04	120	287	73	0	53	60	12	17	0	16	9	3	4	654
Oct-04	102	292	78	0	42	66	16	14	0	22	11	0	3	646
Sep-04	110	286	125	0	47	48	15	25	0	20	6	0	3	685
Aug-04	115	266	88	0	52	54	15	17	0	13	7	0	4	631
Jul-04	125	227	135	0	41	52	7	10	0	14	8	0	1	620
Jun-04	161	282	61	0	61	55	17	20	0	9	13	0	3	682
May-04	151	304	n/a	0	42	82	18	13	0	24	0	0	1	635
Apr-04	168	318	n/a	0	50	64	17	12	1	16	14	0	7	667
Mar-04	273	261	n/a	0	47	63	14	25	4	14	10	1	3	715
Feb-04	226	248	n/a	0	50	72	16	11	2	12	15	0	6	658
Jan-04	269	228	n/a	0	38	72	18	14	4	13	14	0	4	674
Dec-03	205	238	n/a	0	40	56	12	19	3	26	9	1	3	612
Nov-03	145	230	n/a	0	59	66	18	19	5	12	13	0	0	567
Oct-03	193	231	n/a	0	49	68	15	19	4	23	8	0	4	614
Sep-03	182	221	n/a	0	42	52	10	9	2	21	9	0	4	552
Aug-03	160	207	n/a	0	53	61	14	14	4	19	14	0	5	551
Jul-03	212	190	n/a	0	45	57	19	13	9	17	9	2	4	577
Jun-03	215	209	n/a	48	46	33	12	10	0	19	13	0	9	614

Definitions of Release Types

**Discretionary parole**-Released to parole through Parole Board discretion prior to mandatory release or sentence discharge date.

**Mandatory parole**-Released to parole on mandatory release date.

**Mand. Repar**-Reparoled on specific date set by Parole Board (includes S.B. 252 reparoles). n/a - breakout not available prior to June 2004.

**Com. Supv.**-Released to serve 12 months of community supervision.

**Sentence discharge**-Completion of sentence with no further supervision.

**H.B. 1087 discharge**-Completion of sentence with no further supervision, subject to earn time provisions of H.B. 95-1087.

**Martin/ Cooper discharge**-Completion of sentence with no further supervision, sex offender subject to Martin/Cooper Supreme Court decision.

**Chgs/ Det. discharge**-Completion of sentence, released to other law enforcement for pending charges or detainees.

**Com. Spv. Elim discharge**-Completion of sentence following reincarceration on community supervision sentence.

**Probation**-Released by court to probation.

**Ct. Ord. Dsch.**-Released by court order.

**Appeal Bond**-Released by court to appeal bond.

**Deceased**-Offender death in prison.

**COLORADO DEPARTMENT OF CORRECTIONS**  
**MALE ADULT INMATE RELEASES FROM PRISON**  
**Male Population Only**

Date: 7/28/2008

	Parole				Discharge					Other				Total
	Discretionary	Mandatory	Mand. Repar.	Com. Supv.	Sentence	H.B. 1087	Martin/Cooper	Chgs/Det.	Com Spv. Elim	Probation	Ct. Ord. Dsch.	Appeal Bond	Deceased	
Jul-05	100	253	95	0	43	47	13	13	0	11	8	0	8	591
Jun-05	113	280	94	0	25	52	13	13	0	20	12	0	0	622
May-05	127	270	83	0	39	54	8	14	0	15	6	1	6	623
Apr-05	103	270	109	0	37	49	9	20	0	16	8	0	10	631
Mar-05	129	275	82	0	43	62	15	19	0	23	10	1	4	663
Feb-05	109	259	100	0	53	57	16	13	0	15	11	0	5	638
Jan-05	159	250	99	0	50	48	16	18	0	8	2	0	4	654
Dec-04	118	238	82	0	33	46	15	12	0	21	14	0	6	585
Nov-04	103	250	63	0	50	56	12	16	0	15	8	3	4	580
Oct-04	83	270	67	0	38	61	16	14	0	20	10	0	3	582
Sep-04	95	262	114	0	44	44	15	23	0	16	5	0	1	619
Aug-04	97	238	76	0	49	50	15	17	0	11	5	0	4	562
Jul-04	106	198	121	0	39	44	7	10	0	12	7	0	1	545
Jun-04	n/a	n/a	n/a	0	n/a	n/a	n/a	n/a	n/a	n/a	n/a	n/a	n/a	n/a
May-04	n/a	n/a	n/a	0	n/a	n/a	n/a	n/a	n/a	n/a	n/a	n/a	n/a	n/a
Apr-04	n/a	n/a	n/a	0	n/a	n/a	n/a	n/a	n/a	n/a	n/a	n/a	n/a	n/a
Mar-04	n/a	n/a	n/a	0	n/a	n/a	n/a	n/a	n/a	n/a	n/a	n/a	n/a	n/a
Feb-04	n/a	n/a	n/a	0	n/a	n/a	n/a	n/a	n/a	n/a	n/a	n/a	n/a	n/a
Jan-04	n/a	n/a	n/a	0	n/a	n/a	n/a	n/a	n/a	n/a	n/a	n/a	n/a	n/a
Dec-03	n/a	n/a	n/a	0	n/a	n/a	n/a	n/a	n/a	n/a	n/a	n/a	n/a	n/a
Nov-03	n/a	n/a	n/a	0	n/a	n/a	n/a	n/a	n/a	n/a	n/a	n/a	n/a	n/a
Oct-03	n/a	n/a	n/a	0	n/a	n/a	n/a	n/a	n/a	n/a	n/a	n/a	n/a	n/a
Sep-03	n/a	n/a	n/a	0	n/a	n/a	n/a	n/a	n/a	n/a	n/a	n/a	n/a	n/a
Aug-03	n/a	n/a	n/a	0	n/a	n/a	n/a	n/a	n/a	n/a	n/a	n/a	n/a	n/a
Jul-03	n/a	n/a	n/a	0	n/a	n/a	n/a	n/a	n/a	n/a	n/a	n/a	n/a	n/a
Jun-03	n/a	n/a	n/a	0	n/a	n/a	n/a	n/a	n/a	n/a	n/a	n/a	n/a	n/a

Definitions of Release Types

- Discretionary parole**-Released to parole through Parole Board discretion prior to mandatory release or sentence discharge date.
- Mandatory parole**-Released to parole on mandatory release date.
- Mand. Repar**-Reparoled on specific date set by Parole Board (includes S.B. 252 reparoles). n/a - breakout not available prior to June 2004.
- Com. Supv.**-Released to serve 12 months of community supervision.
- Sentence discharge**-Completion of sentence with no further supervision.
- H.B. 1087 discharge**-Completion of sentence with no further supervision, subject to earn time provisions of H.B. 95-1087.
- Martin/ Cooper discharge**-Completion of sentence with no further supervision, sex offender subject to Martin/Cooper Supreme Court decision.
- Chgs/ Det. discharge**-Completion of sentence, released to other law enforcement for pending charges or detainees.
- Com. Spv. Elim discharge**-Completion of sentence following reincarceration on community supervision sentence.
- Probation**-Released by court to probation.
- Ct. Ord. Dsch.**-Released by court order.
- Appeal Bond**-Released by court to appeal bond.
- Deceased**-Offender death in prison.

**COLORADO DEPARTMENT OF CORRECTIONS**  
**TOTAL ADULT INMATE RELEASES FROM PRISON**  
**Female Population Only**

Date: 7/28/2008

	Parole				Discharge					Other				Total
	Discretionary	Mandatory	Mand. Repar.	Com. Supv.	Sentence	H.B. 1087	Martin/Cooper	Chgs/Det.	Com Spv. Elim	Probation	Ct. Ord. Dsch.	Appeal Bond	Deceased	
Jul-05	21	53	14	0	3	1	0	0	0	4	1	0	0	97
Jun-05	31	32	11	0	3	5	0	3	0	2	0	0	0	87
May-05	21	43	12	0	3	7	0	0	0	1	1	0	1	89
Apr-05	18	43	16	0	3	8	0	0	0	2	4	0	0	94
Mar-05	26	36	18	0	3	2	0	2	0	1	1	0	0	89
Feb-05	23	31	9	0	5	6	0	1	0	2	1	0	0	78
Jan-05	24	24	14	0	3	6	0	1	0	2	0	0	1	75
Dec-04	25	35	16	0	2	1	0	0	0	3	1	1	0	84
Nov-04	17	37	10	0	3	4	0	1	0	1	1	0	0	74
Oct-04	19	22	11	0	4	5	0	0	0	2	1	0	0	64
Sep-04	15	24	11	0	3	4	0	2	0	4	1	0	2	66
Aug-04	18	28	12	0	3	4	0	0	0	2	2	0	0	69
Jul-04	19	29	14	0	2	8	0	0	0	2	1	0	0	75
Jun-04	n/a	n/a	n/a	0	n/a	n/a	n/a	n/a	n/a	n/a	n/a	n/a	n/a	n/a
May-04	n/a	n/a	n/a	0	n/a	n/a	n/a	n/a	n/a	n/a	n/a	n/a	n/a	n/a
Apr-04	n/a	n/a	n/a	0	n/a	n/a	n/a	n/a	n/a	n/a	n/a	n/a	n/a	n/a
Mar-04	n/a	n/a	n/a	0	n/a	n/a	n/a	n/a	n/a	n/a	n/a	n/a	n/a	n/a
Feb-04	n/a	n/a	n/a	0	n/a	n/a	n/a	n/a	n/a	n/a	n/a	n/a	n/a	n/a
Jan-04	n/a	n/a	n/a	0	n/a	n/a	n/a	n/a	n/a	n/a	n/a	n/a	n/a	n/a
Dec-03	n/a	n/a	n/a	0	n/a	n/a	n/a	n/a	n/a	n/a	n/a	n/a	n/a	n/a
Nov-03	n/a	n/a	n/a	0	n/a	n/a	n/a	n/a	n/a	n/a	n/a	n/a	n/a	n/a
Oct-03	n/a	n/a	n/a	0	n/a	n/a	n/a	n/a	n/a	n/a	n/a	n/a	n/a	n/a
Sep-03	n/a	n/a	n/a	0	n/a	n/a	n/a	n/a	n/a	n/a	n/a	n/a	n/a	n/a
Aug-03	n/a	n/a	n/a	0	n/a	n/a	n/a	n/a	n/a	n/a	n/a	n/a	n/a	n/a
Jul-03	n/a	n/a	n/a	0	n/a	n/a	n/a	n/a	n/a	n/a	n/a	n/a	n/a	n/a
Jun-03	n/a	n/a	n/a	0	n/a	n/a	n/a	n/a	n/a	n/a	n/a	n/a	n/a	n/a

Definitions of Release Types

**Discretionary parole**-Released to parole through Parole Board discretion prior to mandatory release or sentence discharge date.

**Mandatory parole**-Released to parole on mandatory release date.

**Mand. Repar**-Reparoled on specific date set by Parole Board (includes S.B. 252 reparoles). n/a - breakout not available prior to June 2004.

**Com. Supv.**-Released to serve 12 months of community supervision.

**Sentence discharge**-Completion of sentence with no further supervision.

**H.B. 1087 discharge**-Completion of sentence with no further supervision, subject to earn time provisions of H.B. 95-1087.

**Martin/ Cooper discharge**-Completion of sentence with no further supervision, sex offender subject to Martin/Cooper Supreme Court decision.

**Chgs/ Det. discharge**-Completion of sentence, released to other law enforcement for pending charges or detainees.

**Com. Spv. Elim discharge**-Completion of sentence following reincarceration on community supervision sentence.

**Probation**-Released by court to probation.

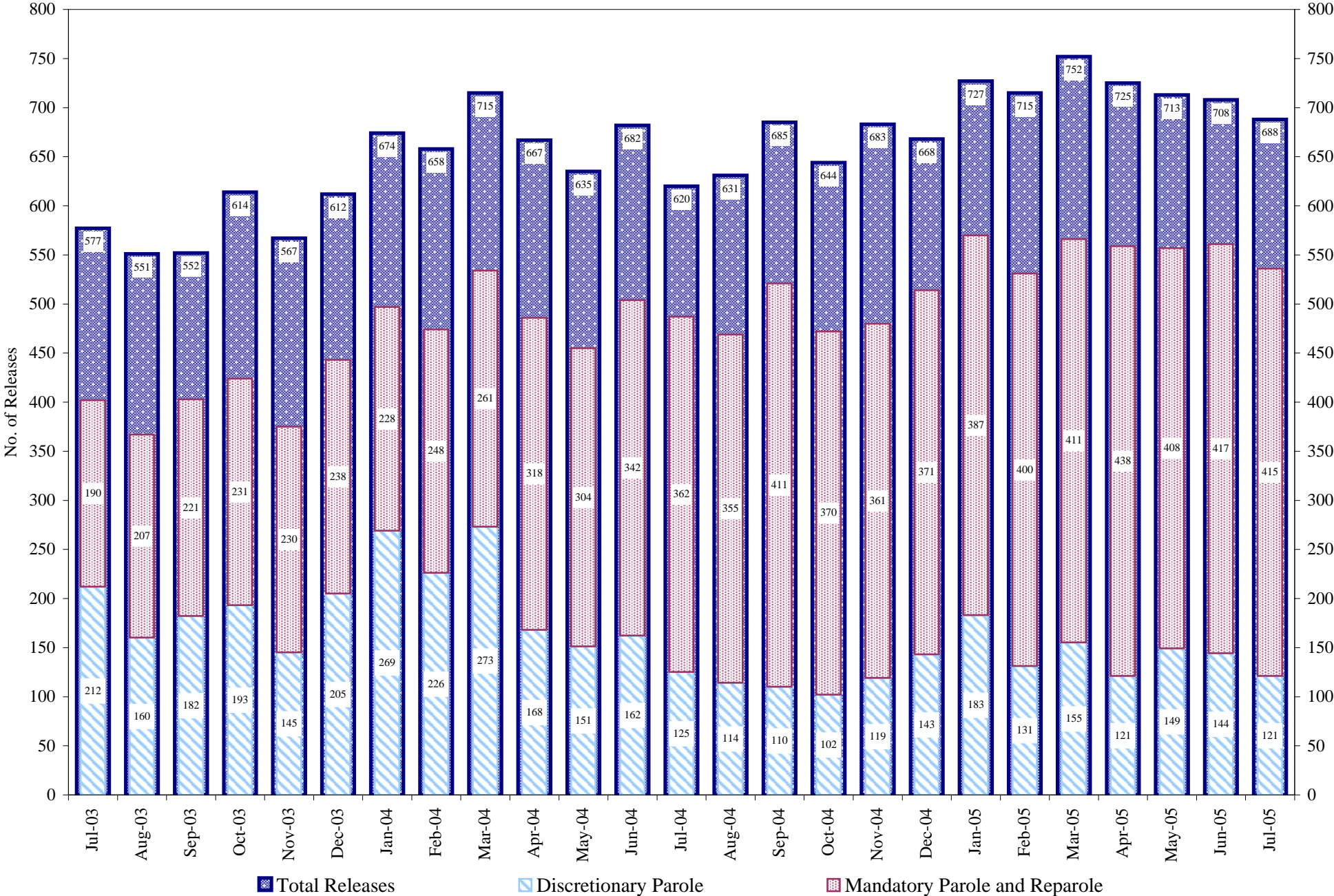
**Ct. Ord. Dsch.**-Released by court order.

**Appeal Bond**-Released by court to appeal bond.

**Deceased**-Offender death in prison.

# COLORADO DEPARTMENT OF CORRECTIONS

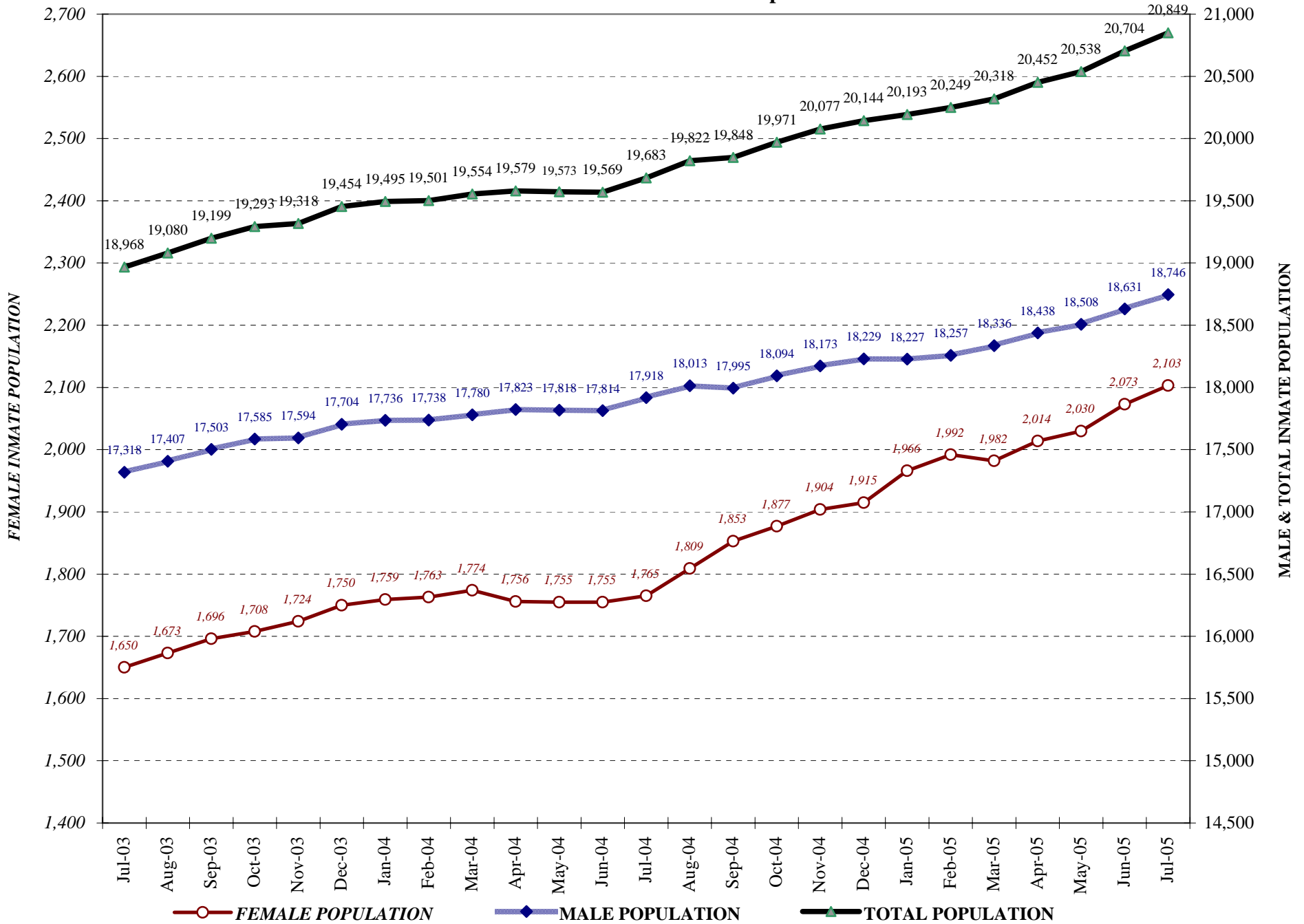
## Adult Prison Releases



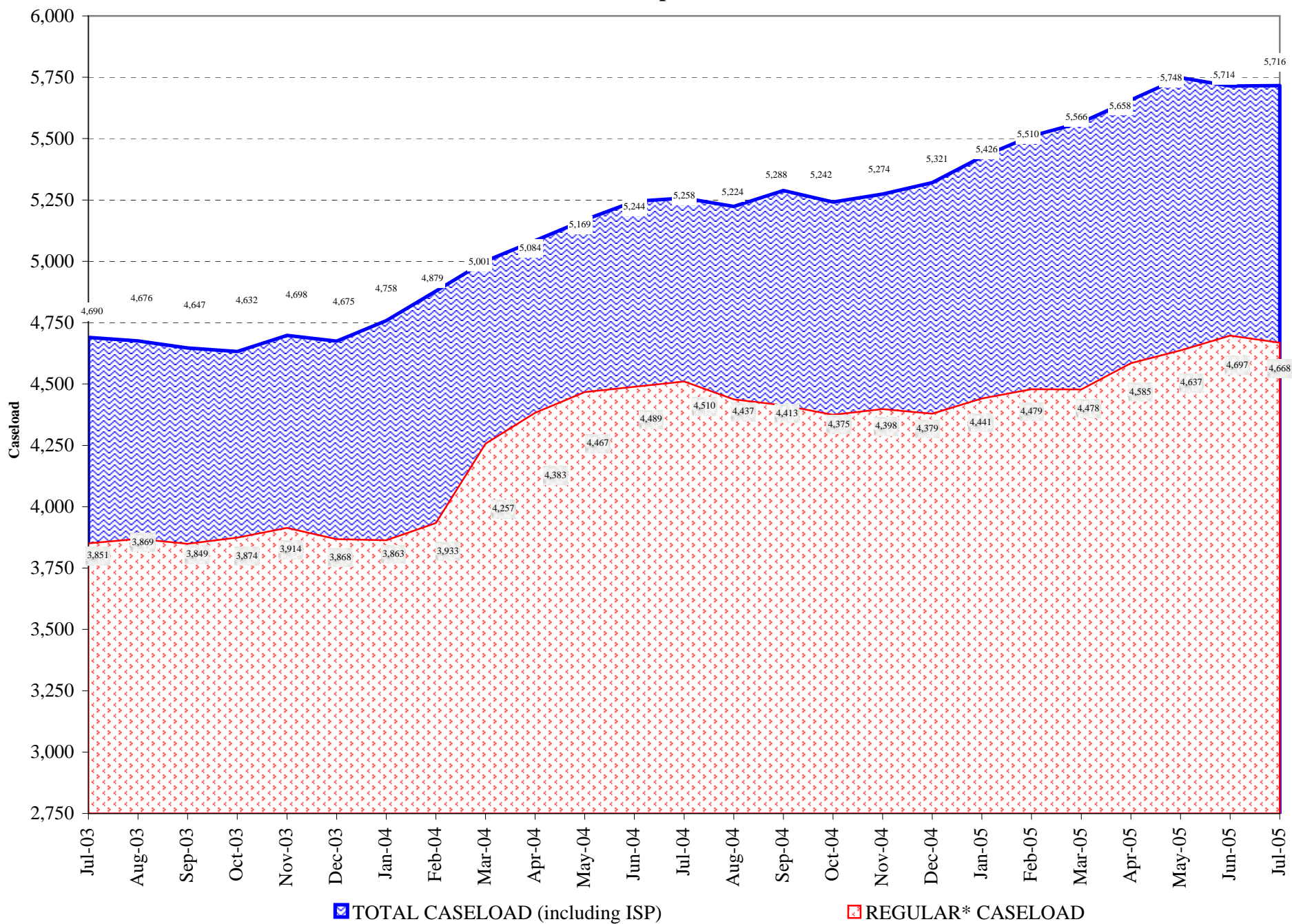
Total releases include releases to discretionary parole, mandatory parole and reparo, all types of discharges and other releases as detailed on the previous page.



## COLORADO DEPARTMENT OF CORRECTIONS Adult Jurisdiction Inmate Population



## COLORADO DEPARTMENT OF CORRECTIONS Parole Population



\*Regular caseload includes interstate parole, but excludes out-of-state parolees and absconders.