

**COLORADO DEPARTMENT OF CORRECTIONS  
MONTHLY POPULATION AND CAPACITY REPORT  
AS OF JUNE 30, 2005**

7-Jul-05

	05/31/05	CAPACITY CHANGES	----- 06/30/05 -----		----- 06/30/04 -----	
	OPERATIONAL CAPACITY*		OPERATIONAL CAPACITY*	ON-GRDS POPULATION	OPERATIONAL CAPACITY*	ON-GRDS POPULATION
COLO STATE PENITENTIARY	756		756	748	756	755
CENTENNIAL CORR FAC	320		320	296	336	304
STERLING CORR FAC	2,445		2,445	2,412	2,445	2,400
LIMON CORR FAC	953		953	944	953	949
ARK VALLEY CORR FAC	1,007		1,007	1,004	1,007	1,003
BUENA VISTA CORR FAC	826		826	823	826	813
BUENA VISTA MIN CTR	292		292	288	292	288
COLO TERR CORR FAC	786		786	781	786	794
FORT LYON CORR FAC	500		500	490	500	463
FREMONT CORR FAC	1,471		1,471	1,453	1,471	1,462
ARROWHEAD CORR CTR	494		494	490	494	487
FOUR MILE CORR CTR	499		499	496	499	497
PRE-RELEASE CORR CTR	0		0	0	0	0
PUEBLO MINIMUM CTR	256		256	249	256	248
TRINIDAD CORR FAC	484		484	479	484	477
S.T.U. at Y.O.S.	30		30	30	30	20
SKYLINE CORR CTR	249		249	249	249	249
COLORADO CORR CTR	150		150	146	150	143
DELTA CORR CTR	484		484	479	484	468
RIFLE CORR CTR	192		192	188	192	183
COLO CORR ALT PROGRAM	100		100	115	100	123
COLO WOMEN'S CORR FAC	224		224	212	224	220
DENVER WOMEN'S CORR FAC	900		900	880	900	883
DENVER REC DIAG CTR	480		480	498	480	503
SAN CARLOS CORR FAC	255		255	250	255	247
<b>***SUBTOTAL***</b>	<b>14,153</b>	<b>0</b>	<b>14,153</b>	<b>14,000</b>	<b>14,169</b>	<b>13,979</b>
<b>CONTRACTS:</b>						
BENT COUNTY CORR CTR	724		724	715	724	684
HUERFANO COUNTY CORR CTR	778		778	749	778	668
CROWLEY COUNTY CORR FAC	1,185		1,185	935	1,185	821
KIT CARSON COUNTY CORR FAC	820		820	766	820	730
GUADALAUPE CO TX CORR FAC	0		0	0	0	0
TALLAHATCHIE MS CORR FAC	121	-121	0	0	0	0
BRUSH CORR FAC	75	35	110	110	0	121
OFF-GROUNDS POPULATION:				199		203
ESCAPEES/WALKAWAYS				259		222
REVOCATIONS-JAIL				0		0
JAIL BACKLOG:						
BACKLOG LESS THAN 72 HOURS			101		34	
BACKLOG GREATER THAN 72 HOURS (FISCAL YTD AVE = 417)			361		0	
BACKLOG-PAROLEES AWAITING TRANSFER			100		21	
TOTAL JAIL BACKLOG				562		55
<b>COUNTY JAIL CONTRACTS</b>				62		37
<b>COMMUNITY CORRECTIONS</b>						
<b>COMMUNITY</b>						
RESIDENTIAL	1,206	20	1,226	1,226	1,192	1,192
PAROLE REVOCATIONS	3	-1	2	2	3	3
REVOKED-RET TO CUST	190	7	197	197	76	76
NON-RESIDENTIAL	55	1	56	56	70	70
REGRESSIONS	39	4	43	43	35	35
<b>TOTAL COMMUNITY</b>	<b>1,493</b>	<b>31</b>	<b>1,524</b>	<b>1,524</b>	<b>1,376</b>	<b>1,376</b>
<b>ISP</b>						
RESIDENTIAL	773	-1	772	772	646	646
NON-RESIDENTIAL	41	2	43	43	22	22
REGRESSIONS	10	-2	8	8	5	5
<b>TOTAL ISP</b>	<b>824</b>	<b>-1</b>	<b>823</b>	<b>823</b>	<b>673</b>	<b>673</b>
<b>TOTAL COMM. CORRECTIONS</b>	<b>2,317</b>	<b>30</b>	<b>2,347</b>	<b>2,347</b>	<b>2,049</b>	<b>2,049</b>
MALE POPULATION			<b>18,631</b>		17,814	
FEMALE POPULATION			<b>2,073</b>		1,755	
<b>**TOTAL INMATE JURISDICTIONAL POPULATION**</b>				<b>20,704</b>		<b>19,569</b>

\*OPERATIONAL CAPACITY INCLUDES ALL BEDS AVAILABLE FOR USE, INCLUDING MANAGEMENT CONTROL UNITS, BU EXCLUDES EMERGENCY DOUBLE BUNKING

**COLORADO DEPARTMENT OF CORRECTIONS**  
**MONTHLY POPULATION AND CAPACITY REPORT**  
**AS OF JUNE 30, 2005**

Revised: 12-Aug-05

**CURRENT MONTH CHANGES IN CAPACITY:**

Jun-05	TALLAHATCHIE MS CORR FAC	TERMINATED CONTRACT BEDS	-121
Jun-05	BRUSH CORR FAC	INCREASED CONTRACT BEDS	35

**NET MONTHLY GROWTH RATE:**

CURRENT MONTH	166
FISCAL YEAR-TO-DATE AVERAGE	95

**YOUTHFUL OFFENDER SYSTEM**

	----- 06/30/05 -----					06/30/04
	DRDC	PUEBLO	CONTRACT FACILITIES	COMM. CORR.	TOTAL POPULATION	TOTAL POPULATION
INTAKE/IDO	0	6			6	8
RFP/REMEDATION	0	12			12	24
PHASE I	0	146	0		146	149
PHASE II	0	16			16	14
PHASE III		0		38	38	38
OFF GROUNDS/BACKLOG					3	2
<b>**TOTAL Y.O.S. POPULATION**</b>	<b>0</b>	<b>180</b>	<b>0</b>	<b>38</b>	<b>221</b>	<b>235</b>

	CURRENT MONTH	FISCAL YR. TO DATE
YOS ADMISSIONS	2	54
YOS RELEASES:		
COMPLETION OF SENTENCE	3	53
JUDICIAL RELEASE TO PROB/CT ORD DISCHG	0	0
JUDICIAL TRANSFER TO DOC	0	0
TERMINATION/FAILURE	0	15
DECEASED	0	0
TOTAL RELEASES	3	68

**PAROLE CASELOAD**

	----- 06/30/05 -----			----- 05/31/05 -----		----- 06/30/04 -----	
	DOMESTIC	INTERST PAR/PROB	TOTAL CASELOAD	DOMESTIC	TOTAL CASELOAD	DOMESTIC	TOTAL CASELOAD
DENVER REGION							
REGULAR	1,739	103	1,842	1,720	1,824	1,697	1,818
ISP	467		467	482	482	337	337
SUBTOTAL	2,206	103	2,309	2,202	2,306	2,034	2,155
NORTHEAST REGION							
REGULAR	1,195	44	1,239	1,193	1,238	1,150	1,209
ISP	268		268	273	273	196	196
SUBTOTAL	1,463	44	1,507	1,466	1,511	1,346	1,405
SOUTHEAST REGION							
REGULAR	1,009	63	1,072	983	1,051	870	931
ISP	213		213	257	257	163	163
SUBTOTAL	1,222	63	1,285	1,240	1,308	1,033	1,094
WESTERN REGION							
REGULAR	494	50	544	472	524	472	531
ISP	69		69	99	99	59	59
SUBTOTAL	563	50	613	571	623	531	590
TOTAL CASELOAD							
REGULAR	4,437	260	4,697	4,368	4,637	4,189	4,489
ISP	1,017		1,017	1,111	1,111	755	755
TOTAL	5,454	260	5,714	5,479	5,748	4,944	5,244
ADDITIONAL CASELOAD:							
OUT-OF-STATE PAROLEES			1,506		1,481		1,393
PAROLEE ABSCONDERS			591		569		601

**COLORADO DEPARTMENT OF CORRECTIONS**  
**MONTHLY POPULATION AND CAPACITY REPORT**  
**AS OF JUNE 30, 2005**

7-Jul-05

	06/30/2005 POPULATION			----- FINAL CUSTODY DESIGNATION* -----					
	On-Grds.	Off-Grds.	TOTAL	Uncls.	Ad.Seg	Close	Medium	Min.-Res.	Minimum
<b>MALE POPULATION</b>									
COLO STATE PENITENTIARY	748	8	756		714	36	5	1	
CENTENNIAL CORR FAC	296	1	297		91	179	16	4	7
STERLING CORR FAC	2,412	28	2,440		231	634	554	628	393
LIMON CORR FAC	944	10	954		14	611	215	81	33
ARK VALLEY CORR FAC	1,004	6	1,010		6	442	283	172	107
BUENA VISTA CORR FAC	823	11	834		33	263	305	156	77
BUENA VISTA MIN CTR	288	1	289				1	227	61
COLO TERR CORR FAC	781	14	795		11	230	263	176	115
FORT LYON CORR FAC	490	5	495			25	223	173	74
FREMONT CORR FAC	1,453	15	1,468		19	294	440	433	282
ARROWHEAD CORR CTR	490	4	494				3	303	188
FOUR MILE CORR CTR	496	5	501				1	368	132
TRINIDAD CORR FAC	479	3	482				5	402	75
S.T.U. at Y.O.S.	30	0	30				6	18	6
SKYLINE CORR CTR	249	2	251					4	247
COLORADO CORR CTR	146	0	146						146
DELTA CORR CTR	479	1	480				1	1	478
RIFLE CORR CTR	188	3	191						191
COLO CORR ALT PROGRAM	109	10	119			1	1	10	107
DENVER REC DIAG CTR	497	14	511	183	12	52	104	103	57
SAN CARLOS CORR FAC	250	2	252	1	23	94	53	43	38
CONTRACTS:									
BENT COUNTY CORR CTR	715	10	725		4	9	385	204	123
HUERFANO COUNTY CORR CTR	749	9	758		2	13	428	193	122
CROWLEY COUNTY CORR FAC	935	17	952		17	11	575	224	125
KIT CARSON COUNTY CORR FAC	766	9	775		4	22	447	193	109
TALLAHATCHIE MS CORR FAC	0	0	0						
COMMUNITY/ISP	1,631	81	1,712			12	33	34	1,633
<b>TOTAL MALE POPULATION</b>	<b>17,448</b>	<b>269</b>	<b>17,717</b>	<b>184</b>	<b>1,181</b>	<b>2,928</b>	<b>4,347</b>	<b>4,151</b>	<b>4,926</b>
<b>PERCENT OF TOTAL</b>				<b>1.0%</b>	<b>6.7%</b>	<b>16.5%</b>	<b>24.5%</b>	<b>23.4%</b>	<b>27.8%</b>
<b>FEMALE POPULATION</b>									
COLO WOMEN'S CORR FAC	212	2	214			59	85	40	30
DENVER WOMEN'S CORR FAC	880	8	888	11	29	101	248	313	186
PUEBLO MINIMUM CTR	249	1	250				1	135	114
COLO CORR ALT PROGRAM	6	0	6					2	4
SAN CARLOS CORR FAC	0	0	0						
DENVER REC DIAG CTR INF	1	0	1					1	
COLO TERR CORR FAC INF.	0	0	0						
CONTRACTS:									
BRUSH CORR FAC	110	0	110				39	45	26
COMMUNITY/ISP	367	18	385				8	11	366
<b>TOTAL FEMALE POPULATION</b>	<b>1,825</b>	<b>29</b>	<b>1,854</b>	<b>11</b>	<b>29</b>	<b>160</b>	<b>381</b>	<b>547</b>	<b>726</b>
<b>PERCENT OF TOTAL</b>				<b>0.6%</b>	<b>1.6%</b>	<b>8.6%</b>	<b>20.6%</b>	<b>29.5%</b>	<b>39.2%</b>

\*Final custody designations for jail backlog and contracts, fugitive, community regressions, and parole revocations are not reported.

**COLORADO DEPARTMENT OF CORRECTIONS**  
**ADULT INMATE JURISDICTIONAL POPULATION (1)**

DATE: 7/7/2005

DATE	MALE JURISDICTIONAL POPULATION	FEMALE JURISDICTIONAL POPULATION	TOTAL INMATE JURISDICTIONAL POPULATION	NET CHANGE	FISCAL Y-T-D AVG
<b>06-30-05</b>	<b>18,631</b>	<b>2,073</b>	<b>20,704</b>	<b>166</b>	<b>95</b>
05-31-05	18,508	2,030	20,538	86	
04-30-05	18,438	2,014	20,452	134	
03-31-05	18,336	1,982	20,318	69	
02-28-05	18,257	1,992	20,249	56	
01-31-05	18,227	1,966	20,193	49	
12-31-04	18,229	1,915	20,144	67	
11-30-04	18,173	1,904	20,077	106	
10-31-04	18,094	1,877	19,971	123	
09-30-04	17,995	1,853	19,848	26	
08-31-04	18,013	1,809	19,822	139	
07-31-04	17,918	1,765	19,683	114	
<b>06-30-04</b>	<b>17,814</b>	<b>1,755</b>	<b>19,569</b>	<b>-4</b>	
05-31-04	17,818	1,755	19,573	-6	
04-30-04	17,823	1,756	19,579	25	
03-31-04	17,780	1,774	19,554	53	
02-29-04	17,738	1,763	19,501	6	
01-31-04	17,736	1,759	19,495	41	
12-31-03	17,704	1,750	19,454	136	<b>60</b>
11-30-03	17,594	1,724	19,318	25	
10-31-03	17,585	1,708	19,293	94	
09-30-03	17,503	1,696	19,199	119	
08-31-03	17,407	1,673	19,080	112	
07-31-03	17,318	1,650	18,968	122	
<b>06-30-03</b>	<b>17,226</b>	<b>1,620</b>	<b>18,846</b>		<b>67</b>
<b>06-30-02</b>	<b>16,539</b>	<b>1,506</b>	<b>18,045</b>		<b>101</b>
<b>06-30-01</b>	<b>15,493</b>	<b>1,340</b>	<b>16,833</b>		<b>70</b>
<b>06-30-00</b>	<b>14,733</b>	<b>1,266</b>	<b>15,999</b>		<b>106</b>
<b>06-30-99</b>	<b>13,547</b>	<b>1,179</b>	<b>14,726</b>		<b>89</b>
<b>06-30-98</b>	<b>12,647</b>	<b>1,016</b>	<b>13,663</b>		<b>89</b>
<b>06-30-97</b>	<b>11,681</b>	<b>909</b>	<b>12,590</b>		<b>84</b>
<b>06-30-96</b>	<b>10,808</b>	<b>769</b>	<b>11,577</b>		<b>76</b>
<b>06-30-95</b>	<b>10,000</b>	<b>669</b>	<b>10,669</b>		<b>55</b>
<b>06-30-94</b>	<b>9,382</b>	<b>623</b>	<b>10,005</b>		

(1) Adult inmate jurisdictional population includes on-grounds, off-grounds, out-of-state, escapees, and jail backlog and excludes offenders sentenced to the Youthful Offender System (Y.O.S.).

**COLORADO DEPARTMENT OF CORRECTIONS**  
ADULT INMATE RELEASES FROM PRISON

Date: 7/7/2005

	Parole				Discharge					Other				Total
	Discretionary	Mandatory	Mand. Repar.	Com. Supv.	Sentence	H.B. 1087	Martin/Cooper	Chgs/Det.	Com Spv. Elim	Probation	Ct. Ord. Dsch.	Appeal Bond	Deceased	
Jun-05	144	312	105	0	28	57	13	16	0	21	12	0	0	708
May-05	149	313	95	0	42	61	8	14	0	16	7	1	7	713
Apr-05	121	313	125	0	40	57	14	15	0	18	12	0	10	725
Mar-05	155	311	100	0	46	64	15	21	0	24	11	1	4	752
Feb-05	131	291	109	0	58	63	16	13	0	17	12	0	5	715
Jan-05	183	274	113	0	53	54	16	19	0	10	2	0	5	729
Dec-04	143	273	98	0	35	47	15	12	0	24	15	1	6	669
Nov-04	120	287	73	0	53	60	12	17	0	16	9	3	4	654
Oct-04	102	292	78	0	42	66	16	14	0	22	11	0	3	646
Sep-04	110	286	125	0	47	48	15	25	0	20	6	0	3	685
Aug-04	115	266	88	0	52	54	15	17	0	13	7	0	4	631
Jul-04	125	227	135	0	41	52	7	10	0	14	8	0	1	620
Jun-04	161	282	61	0	61	55	17	20	0	9	13	0	3	682
May-04	151	304	n/a	0	42	82	18	13	0	24	0	0	1	635
Apr-04	168	318	n/a	0	50	64	17	12	1	16	14	0	7	667
Mar-04	273	261	n/a	0	47	63	14	25	4	14	10	1	3	715
Feb-04	226	248	n/a	0	50	72	16	11	2	12	15	0	6	658
Jan-04	269	228	n/a	0	38	72	18	14	4	13	14	0	4	674
Dec-03	205	238	n/a	0	40	56	12	19	3	26	9	1	3	612
Nov-03	145	230	n/a	0	59	66	18	19	5	12	13	0	0	567
Oct-03	193	231	n/a	0	49	68	15	19	4	23	8	0	4	614
Sep-03	182	221	n/a	0	42	52	10	9	2	21	9	0	4	552
Aug-03	160	207	n/a	0	53	61	14	14	4	19	14	0	5	551
Jul-03	212	190	n/a	0	45	57	19	13	9	17	9	2	4	577
Jun-03	215	209	n/a	48	46	33	12	10	0	19	13	0	9	614

Definitions of Release Types

**Discretionary parole**-Released to parole through Parole Board discretion prior to mandatory release or sentence discharge date.

**Mandatory parole**-Released to parole on mandatory release date.

**Mand. Repar.**-Reparoled on specific date set by Parole Board (includes S.B. 252 reparoles). n/a - breakout not available prior to June 2004.

**Com. Supv.**-Released to serve 12 months of community supervision.

**Sentence discharge**-Completion of sentence with no further supervision.

**H.B. 1087 discharge**-Completion of sentence with no further supervision, subject to earn time provisions of H.B. 95-1087.

**Martin/ Cooper discharge**-Completion of sentence with no further supervision, sex offender subject to Martin/Cooper Supreme Court decision.

**Chgs/ Det. discharge**-Completion of sentence, released to other law enforcement for pending charges or detainees.

**Com. Spv. Elim discharge**-Completion of sentence following reincarceration on community supervision sentence.

**Probation**-Released by court to probation.

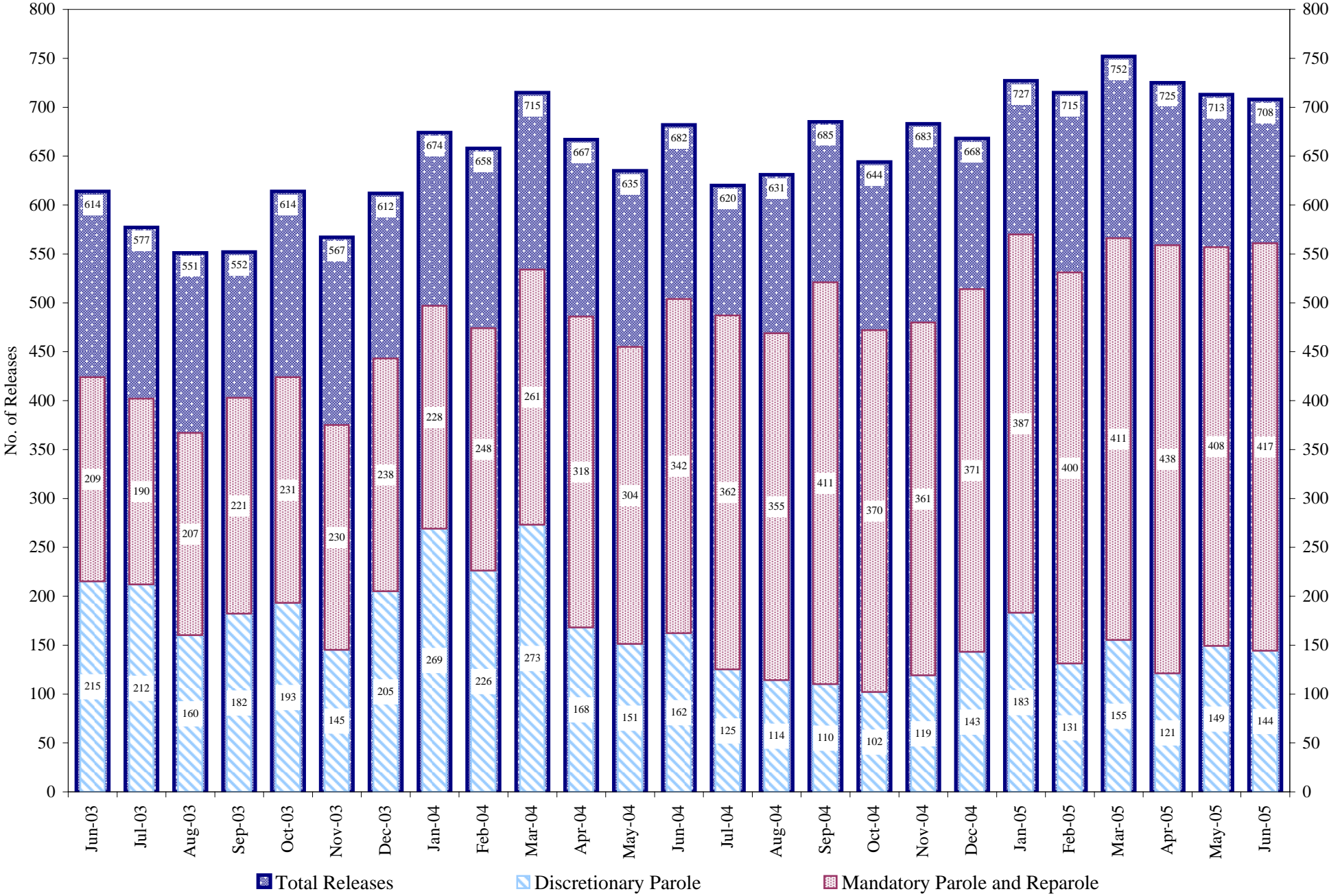
**Ct. Ord. Dsch.**-Released by court order.

**Appeal Bond**-Released by court to appeal bond.

**Deceased**-Offender death in prison.

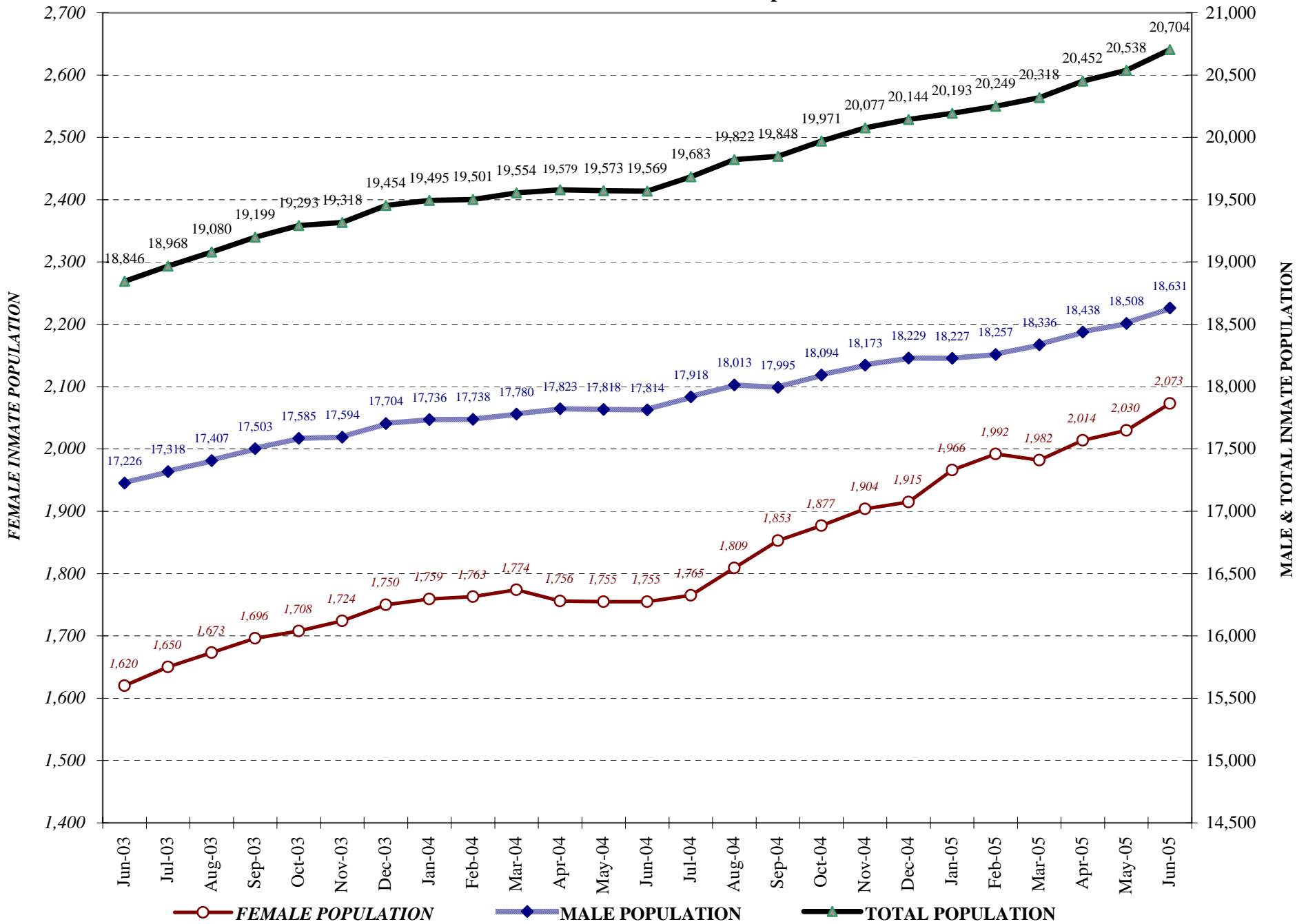
# COLORADO DEPARTMENT OF CORRECTIONS

## Adult Prison Releases



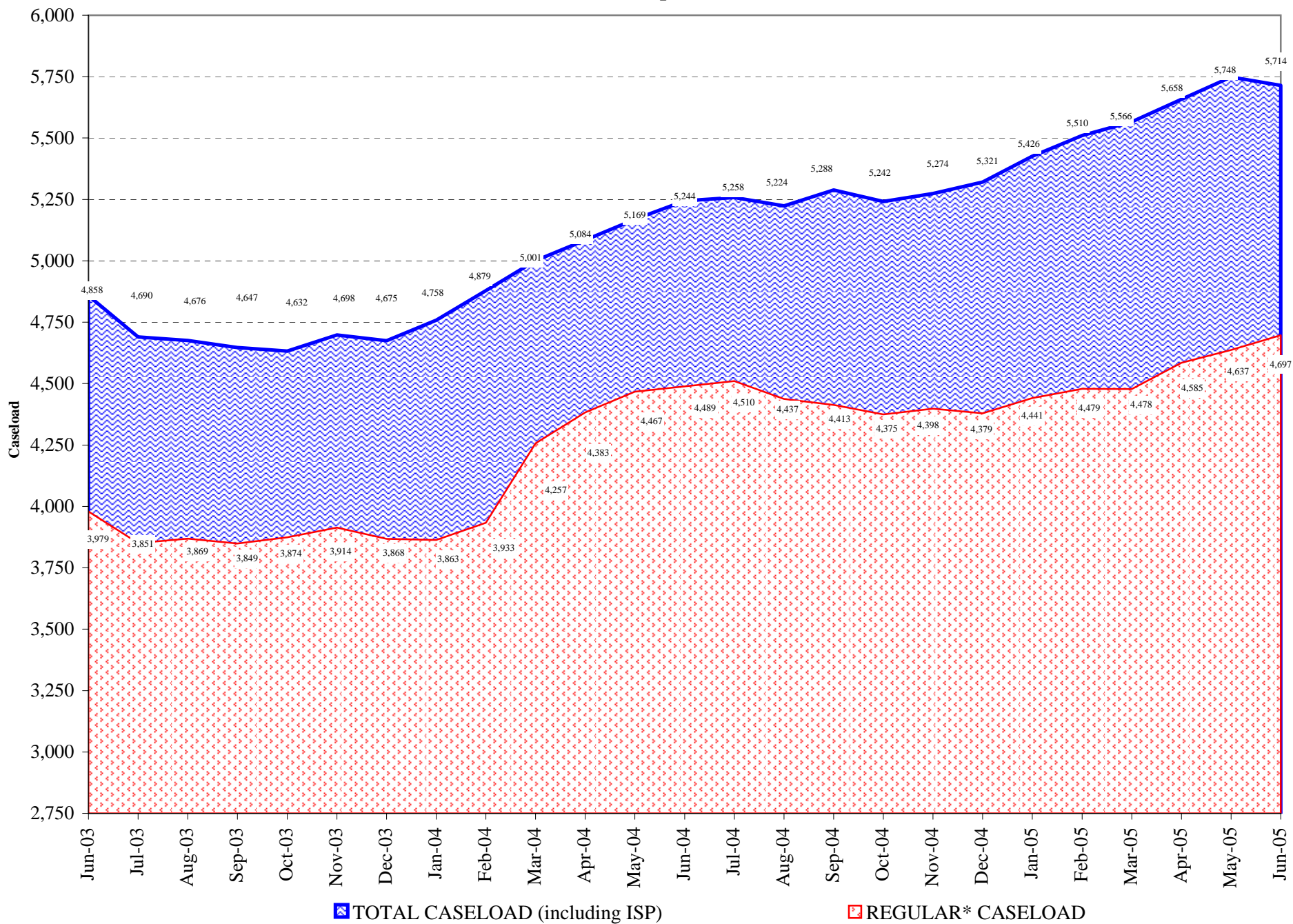
Total releases include releases to discretionary parole, mandatory parole and reparo, all types of discharges and other releases as detailed on the previous page.

## COLORADO DEPARTMENT OF CORRECTIONS Adult Jurisdiction Inmate Population



# COLORADO DEPARTMENT OF CORRECTIONS

## Parole Population



\*Regular caseload includes interstate parole, but excludes out-of-state parolees and absconders.