

**COLORADO DEPARTMENT OF CORRECTIONS
MONTHLY POPULATION AND CAPACITY REPORT
AS OF DECEMBER 31, 2004**

4-Jan-05

	11/30/04	CAPACITY CHANGES	------ 12/31/04 -----		------ 12/31/03 -----	
	OPERATIONAL CAPACITY*		OPERATIONAL CAPACITY*	ON-GRDS POPULATION	OPERATIONAL CAPACITY*	ON-GRDS POPULATION
COLO STATE PENITENTIARY	756		756	751	756	749
CENTENNIAL CORR FAC	320		320	306	336	319
STERLING CORR FAC	2,445		2,445	2,409	2,445	2,413
LIMON CORR FAC	953		953	942	953	950
ARK VALLEY CORR FAC	1,007		1,007	993	1,007	999
BUENA VISTA CORR FAC	826		826	822	826	825
BUENA VISTA MIN CTR	292		292	288	292	288
COLO TERR CORR FAC	786		786	770	786	780
FORT LYON CORR FAC	500		500	487	500	481
FREMONT CORR FAC	1,471		1,471	1,462	1,467	1,463
ARROWHEAD CORR CTR	494		494	489	494	491
FOUR MILE CORR CTR	499		499	496	499	495
PRE-RELEASE CORR CTR	0		0	0	0	0
PUEBLO MINIMUM CTR	256		256	251	256	255
TRINIDAD CORR FAC	484		484	474	484	479
S.T.U. at Y.O.S.	30		30	26	30	26
SKYLINE CORR CTR	249		249	245	249	242
COLORADO CORR CTR	150		150	139	150	134
DELTA CORR CTR	484		484	470	484	446
RIFLE CORR CTR	192		192	191	192	192
COLO CORR ALT PROGRAM	100		100	91	100	112
COLO WOMEN'S CORR FAC	224		224	218	224	219
DENVER WOMEN'S CORR FAC	900		900	875	804	789
DENVER REC DIAG CTR	480		480	481	480	494
SAN CARLOS CORR FAC	255		255	246	255	253
SUBTOTAL	14,153	0	14,153	13,922	14,069	13,894
CONTRACTS:						
BENT COUNTY CORR CTR	724		724	665	724	720
HUERFANO COUNTY CORR CTR	778		778	743	778	720
CROWLEY COUNTY CORR FAC	1,185		1,185	488	1,185	874
KIT CARSON COUNTY CORR FAC	820		820	718	820	699
GUADALAUPE CO TX CORR FAC	0		0	0	0	0
TALLAHATCHIE MS CORR FAC	121		121	121	0	0
BRUSH CORR FAC	75		75	84	0	0
OFF-GROUNDS POPULATION:				171		179
ESCAPEES/WALKAWAYS				241		208
REVOCATIONS-JAIL				1		11
JAIL BACKLOG:						
BACKLOG LESS THAN 72 HOURS			79		96	
BACKLOG GREATER THAN 72 HOURS (FISCAL YTD AVE = 304)			540		82	
BACKLOG-PAROLEES AWAITING TRANSFER			144		65	
TOTAL JAIL BACKLOG				763		243
COUNTY JAIL CONTRACTS				20		46
COMMUNITY CORRECTIONS						
COMMUNITY						
RESIDENTIAL	1,150	0	1,150	1,150	1,066	1,066
PAROLE REVOCATIONS	5	0	5	5	11	11
REVOKED-RET TO CUST	143	2	145	145	13	13
NON-RESIDENTIAL	72	-3	69	69	55	55
REGRESSIONS	20	22	42	42	19	19
TOTAL COMMUNITY	1,390	21	1,411	1,411	1,164	1,164
ISP						
RESIDENTIAL	755	4	759	759	642	642
NON-RESIDENTIAL	40	-7	33	33	45	45
REGRESSIONS	2	2	4	4	9	9
TOTAL ISP	797	-1	796	796	696	696
TOTAL COMM. CORRECTIONS	2,187	20	2,207	2,207	1,860	1,860
MALE POPULATION			18,229		17,704	
FEMALE POPULATION			1,915		1,750	
TOTAL INMATE JURISDICTIONAL POPULATION				20,144		19,454

*OPERATIONAL CAPACITY INCLUDES ALL BEDS AVAILABLE FOR USE, INCLUDING MANAGEMENT CONTROL UNITS, BUT EXCLUDES EMERGENCY DOUBLE BUNKING

COLORADO DEPARTMENT OF CORRECTIONS
MONTHLY POPULATION AND CAPACITY REPORT
AS OF DECEMBER 31, 2004

4-Jan-05

CURRENT MONTH CHANGES IN CAPACITY:

NONE

NET MONTHLY GROWTH RATE:

CURRENT MONTH	67
FISCAL YEAR-TO-DATE AVERAGE	96

YOUTHFUL OFFENDER SYSTEM

	----- 12/31/04 -----				12/31/03
	DRDC	PUEBLO	CONTRACT FACILITIES	COMM. CORR.	TOTAL POPULATION
INTAKE/IDO	0	0			0
RFP/REMEDATION	0	25			23
PHASE I	0	140	0		159
PHASE II	0	16			4
PHASE III		0		37	50
OFF GROUNDS/BACKLOG					7
TOTAL Y.O.S. POPULATION	0	181	0	37	242

	CURRENT MONTH	FISCAL YR. TO DATE
YOS ADMISSIONS	5	29
YOS RELEASES:		
COMPLETION OF SENTENCE	5	32
JUDICIAL RELEASE TO PROB/CT ORD DISCHG	0	0
JUDICIAL TRANSFER TO DOC	0	0
TERMINATION/FAILURE	0	7
DECEASED	0	0
TOTAL RELEASES	5	39

PAROLE CASELOAD

	----- 12/31/04 -----			----- 11/30/04 -----		----- 12/31/03 -----	
	DOMESTIC	INTERST PAR/PROB	TOTAL CASELOAD	DOMESTIC	TOTAL CASELOAD	DOMESTIC	TOTAL CASELOAD
DENVER REGION							
REGULAR	1,595	119	1,714	1,621	1,736	1,447	1,551
ISP	408		408	369	369	324	324
SUBTOTAL	2,003	119	2,122	1,990	2,105	1,771	1,875
NORTHEAST REGION							
REGULAR	1,128	49	1,177	1,111	1,160	1,008	1,090
ISP	229		229	234	234	201	201
SUBTOTAL	1,357	49	1,406	1,345	1,394	1,209	1,291
SOUTHEAST REGION							
REGULAR	929	66	995	936	1,008	722	773
ISP	202		202	174	174	201	201
SUBTOTAL	1,131	66	1,197	1,110	1,182	923	974
WESTERN REGION							
REGULAR	444	49	493	439	494	401	454
ISP	103		103	99	99	81	81
SUBTOTAL	547	49	596	538	593	482	535
TOTAL CASELOAD							
REGULAR	4,096	283	4,379	4,107	4,398	3,578	3,868
ISP	942		942	876	876	807	807
TOTAL	5,038	283	5,321	4,983	5,274	4,385	4,675
ADDITIONAL CASELOAD:							
OUT-OF-STATE PAROLEES			1,470		1,442		1,363
PAROLEE ABSCONDERS			592		598		521

COLORADO DEPARTMENT OF CORRECTIONS
MONTHLY POPULATION AND CAPACITY REPORT
AS OF DECEMBER 31, 2004

4-Jan-05

	12/31/2004 POPULATION			----- FINAL CUSTODY DESIGNATION* -----						
	On-Grds.	Off-Grds.	TOTAL	Uncls.	Ad.Seg	Close	Medium	Min.-Res.	Minimum	
MALE POPULATION										
COLO STATE PENITENTIARY	751	2	753			745	4	1	2	1
CENTENNIAL CORR FAC	306	0	306			58	227	13	5	3
STERLING CORR FAC	2,409	24	2,433			207	557	616	645	408
LIMON CORR FAC	942	12	954			10	587	255	72	30
ARK VALLEY CORR FAC	993	11	1,004			7	380	319	189	109
BUENA VISTA CORR FAC	822	7	829			16	262	308	151	92
BUENA VISTA MIN CTR	288	7	295					1	224	70
COLO TERR CORR FAC	770	8	778			11	217	256	174	120
FORT LYON CORR FAC	487	4	491				16	245	159	71
FREMONT CORR FAC	1,462	11	1,473			18	336	427	416	276
ARROWHEAD CORR CTR	489	1	490					11	277	202
FOUR MILE CORR CTR	496	2	498					1	357	140
TRINIDAD CORR FAC	474	5	479				1	12	369	97
S.T.U. at Y.O.S.	26	0	26					11	11	4
SKYLINE CORR CTR	245	0	245						1	244
COLORADO CORR CTR	139	1	140							140
DELTA CORR CTR	470	5	475				1	1	2	471
RIFLE CORR CTR	191	2	193							193
COLO CORR ALT PROGRAM	83	1	84					1	2	81
DENVER REC DIAG CTR	478	18	496	128	9	47		95	153	64
SAN CARLOS CORR FAC	246	3	249		23	100		53	40	33
CONTRACTS:										
BENT COUNTY CORR CTR	665	8	673				15	344	201	113
HUERFANO COUNTY CORR CTR	743	8	751		1	27		445	176	102
CROWLEY COUNTY CORR FAC	488	0	488		8			223	158	99
KIT CARSON COUNTY CORR FAC	718	10	728			15		419	188	106
TALLAHATCHIE MS CORR FAC	121	0	121		121					
COMMUNITY/ISP	1,580	89	1,669			6		24	27	1,612
TOTAL MALE POPULATION	16,882	239	17,121	128	1,234	2,798	4,081	3,999	4,881	
PERCENT OF TOTAL				0.7%	7.2%	16.3%	23.8%	23.4%	28.5%	
FEMALE POPULATION										
COLO WOMEN'S CORR FAC	218	5	223				62	88	47	26
DENVER WOMEN'S CORR FAC	875	12	887	9	27	101		271	277	202
PUEBLO MINIMUM CTR	251	4	255					2	152	101
COLO CORR ALT PROGRAM	8	0	8						2	6
SAN CARLOS CORR FAC	0	0	0							
DENVER REC DIAG CTR INF	3	0	3					1	1	1
COLO TERR CORR FAC INF.	0	0	0							
CONTRACTS:										
BRUSH CORR FAC	84	0	84					32	28	24
COMMUNITY/ISP	329	13	342					1	9	332
TOTAL FEMALE POPULATION	1,768	34	1,802	9	27	163	395	516	516	692
PERCENT OF TOTAL				0.5%	1.5%	9.0%	21.9%	28.6%	28.6%	38.4%

*Final custody designations for jail backlog and contracts, fugitive, community regressions, and parole revocations are not reported.

COLORADO DEPARTMENT OF CORRECTIONS

ADULT INMATE JURISDICTIONAL POPULATION (1)

DATE: 1/4/2005

DATE	MALE JURISDICTIONAL POPULATION	FEMALE JURISDICTIONAL POPULATION	TOTAL INMATE JURISDICTIONAL POPULATION	NET CHANGE	FISCAL Y-T-D AVG
12-31-04	18,229	1,915	20,144	67	96
11-30-04	18,173	1,904	20,077	106	
10-31-04	18,094	1,877	19,971	123	
09-30-04	17,995	1,853	19,848	26	
08-31-04	18,013	1,809	19,822	139	
07-31-04	17,918	1,765	19,683	114	
06-30-04	17,814	1,755	19,569	-4	
05-31-04	17,818	1,755	19,573	-6	
04-30-04	17,823	1,756	19,579	25	
03-31-04	17,780	1,774	19,554	53	
02-29-04	17,738	1,763	19,501	6	
01-31-04	17,736	1,759	19,495	41	
12-31-03	17,704	1,750	19,454	136	60
11-30-03	17,594	1,724	19,318	25	
10-31-03	17,585	1,708	19,293	94	
09-30-03	17,503	1,696	19,199	119	
08-31-03	17,407	1,673	19,080	112	
07-31-03	17,318	1,650	18,968	122	
06-30-03	17,226	1,620	18,846	69	
05-31-03	17,162	1,615	18,777	81	
04-30-03	17,088	1,608	18,696	52	
03-31-03	17,047	1,597	18,644	55	
02-28-03	17,006	1,583	18,589	16	
01-31-03	16,997	1,576	18,573	22	
12-31-02	16,969	1,582	18,551	31	67
11-30-02	16,945	1,575	18,520	58	
10-31-02	16,896	1,566	18,462	80	
09-30-02	16,834	1,548	18,382	44	
08-31-02	16,790	1,548	18,338	222	
07-31-02	16,589	1,527	18,116	71	
06-30-02	16,539	1,506	18,045		101
06-30-01	15,493	1,340	16,833		70
06-30-00	14,733	1,266	15,999		106
06-30-99	13,547	1,179	14,726		89
06-30-98	12,647	1,016	13,663		89
06-30-97	11,681	909	12,590		84
06-30-96	10,808	769	11,577		76
06-30-95	10,000	669	10,669		55
06-30-94	9,382	623	10,005		

(1) Adult inmate jurisdictional population includes on-grounds, off-grounds, out-of-state, escapees, and jail backlog and excludes offenders sentenced to the Youthful Offender System (Y.O.S.).

COLORADO DEPARTMENT OF CORRECTIONS
ADULT INMATE RELEASES FROM PRISON

Date: 1/4/2005

	Parole			Discharge					Other				Total
	Discretionary	Mandatory & Reparole	Com. Supv.	Sentence	H.B. 1087	Martin/Cooper	Chgs/Det.	Com. Spv. Elim.	Probation	Ct. Ord. Dsch.	Appeal Bond	Deceased	
Dec-04	143	371	0	35	46	15	12	0	24	15	1	6	668
Nov-04	119	361	0	53	59	12	17	0	16	9	3	4	653
Oct-04	102	370	0	42	65	16	14	0	22	11	0	2	644
Sep-04	110	411	0	47	48	15	25	0	20	6	0	3	685
Aug-04	114	355	0	52	54	15	17	0	13	7	0	4	631
Jul-04	125	362	0	41	52	7	10	0	14	8	0	1	620
Jun-04	162	342	0	61	55	17	20	0	9	13	0	3	682
May-04	151	304	0	42	82	18	13	0	24	0	0	1	635
Apr-04	168	318	0	50	64	17	12	1	16	14	0	7	667
Mar-04	273	261	0	47	63	14	25	4	14	10	1	3	715
Feb-04	226	248	0	50	72	16	11	2	12	15	0	6	658
Jan-04	269	228	0	38	72	18	14	4	13	14	0	4	674
Dec-03	205	238	0	40	56	12	19	3	26	9	1	3	612
Nov-03	145	230	0	59	66	18	19	5	12	13	0	0	567
Oct-03	193	231	0	49	68	15	19	4	23	8	0	4	614
Sep-03	182	221	0	42	52	10	9	2	21	9	0	4	552
Aug-03	160	207	0	53	61	14	14	4	19	14	0	5	551
Jul-03	212	190	0	45	57	19	13	9	17	9	2	4	577
Jun-03	215	209	48	46	33	12	10	0	19	13	0	9	614
May-03	170	199	41	43	58	18	11	0	20	11	0	6	577
Apr-03	193	221	40	39	40	15	11	0	22	11	0	4	596
Mar-03	183	225	36	51	34	11	17	0	21	11	1	2	592
Feb-03	171	228	34	44	56	19	16	0	14	8	1	5	596
Jan-03	195	214	32	52	48	15	12	0	32	8	1	5	614
Dec-02	166	242	30	42	54	14	12	0	37	9	0	6	612

Definitions of Release Types

Discretionary parole-Released to parole through Parole Board discretion prior to mandatory release or sentence discharge date.

Mandatory & Reparole-Released to parole on mandatory release date or reparing on specific date set by Parole Board.

Com. Supv.-Released to serve 12 months of community supervision.

Sentence discharge-Completion of sentence with no further supervision.

H.B. 1087 discharge-Completion of sentence with no further supervision, subject to earn time provisions of H.B. 95-1087.

Martin/ Cooper discharge-Completion of sentence with no further supervision, sex offender subject to Martin/Cooper Supreme Court decision.

Chgs/ Det. discharge-Completion of sentence, released to other law enforcement for pending charges or detainees.

Com. Spv. Elim discharge-Completion of sentence following reincarceration on community supervision sentence.

Probation-Released by court to probation.

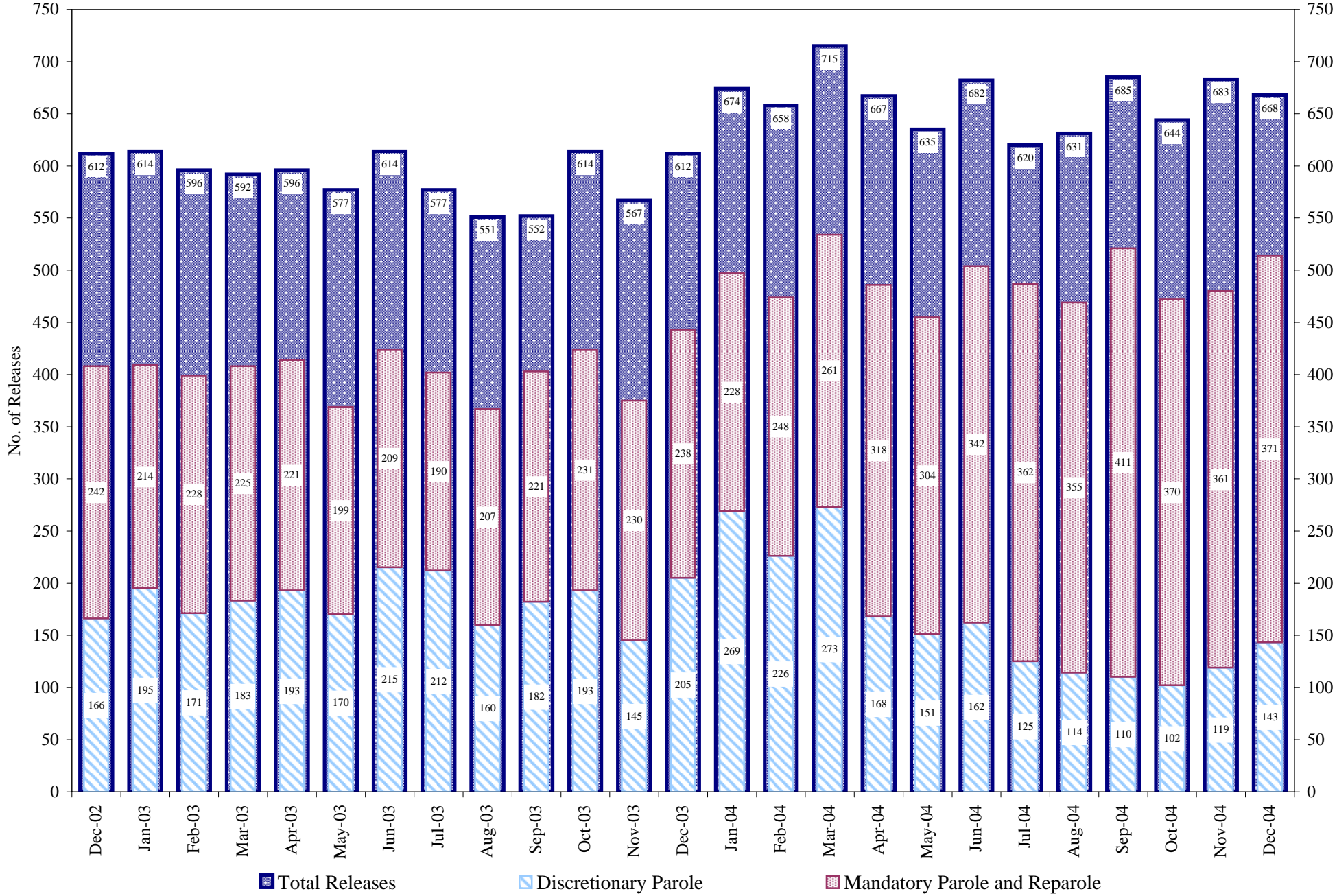
Ct. Ord. Dsch.-Released by court order.

Appeal Bond-Released by court to appeal bond.

Deceased-Offender death in prison.

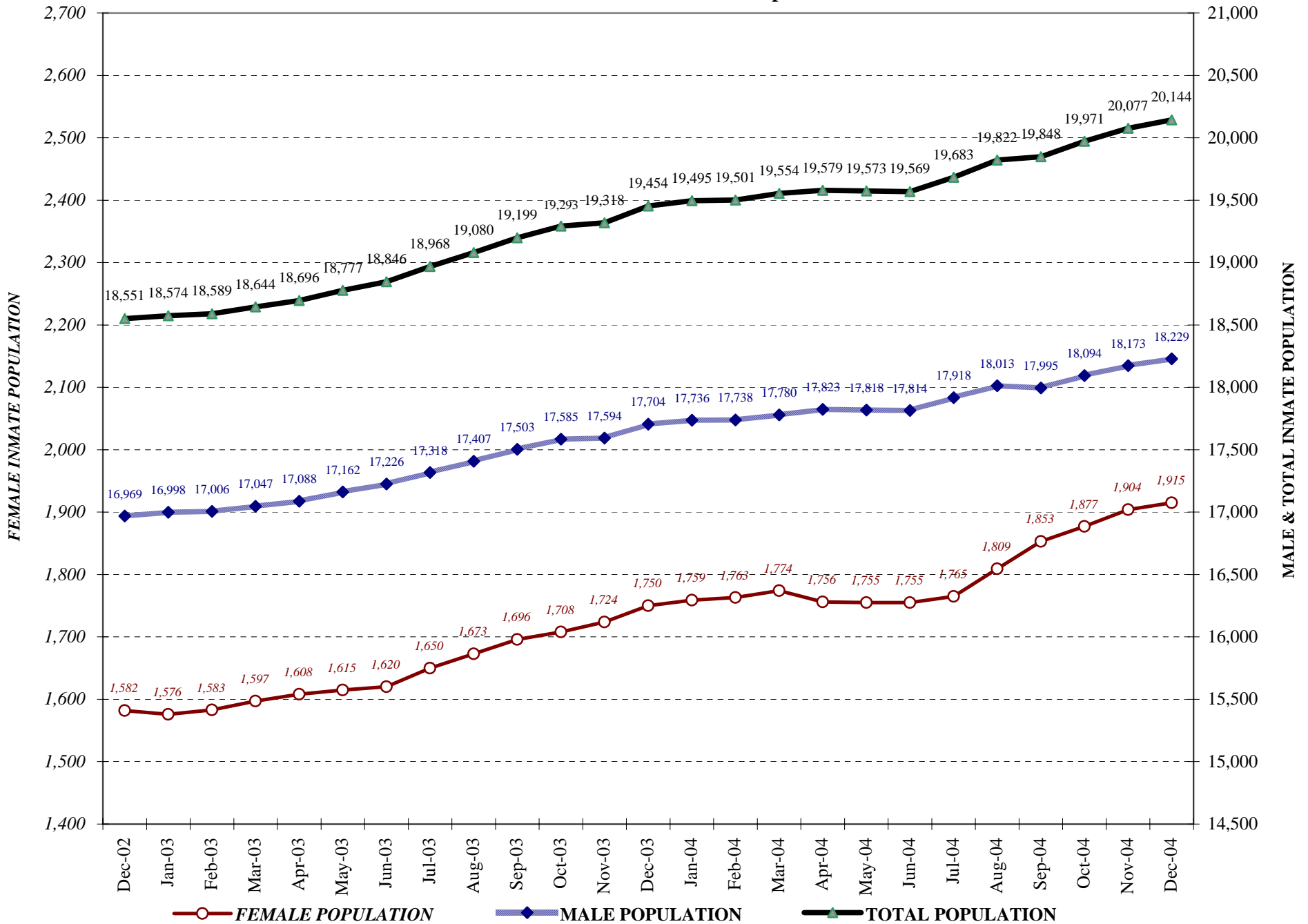
COLORADO DEPARTMENT OF CORRECTIONS

Adult Prison Releases

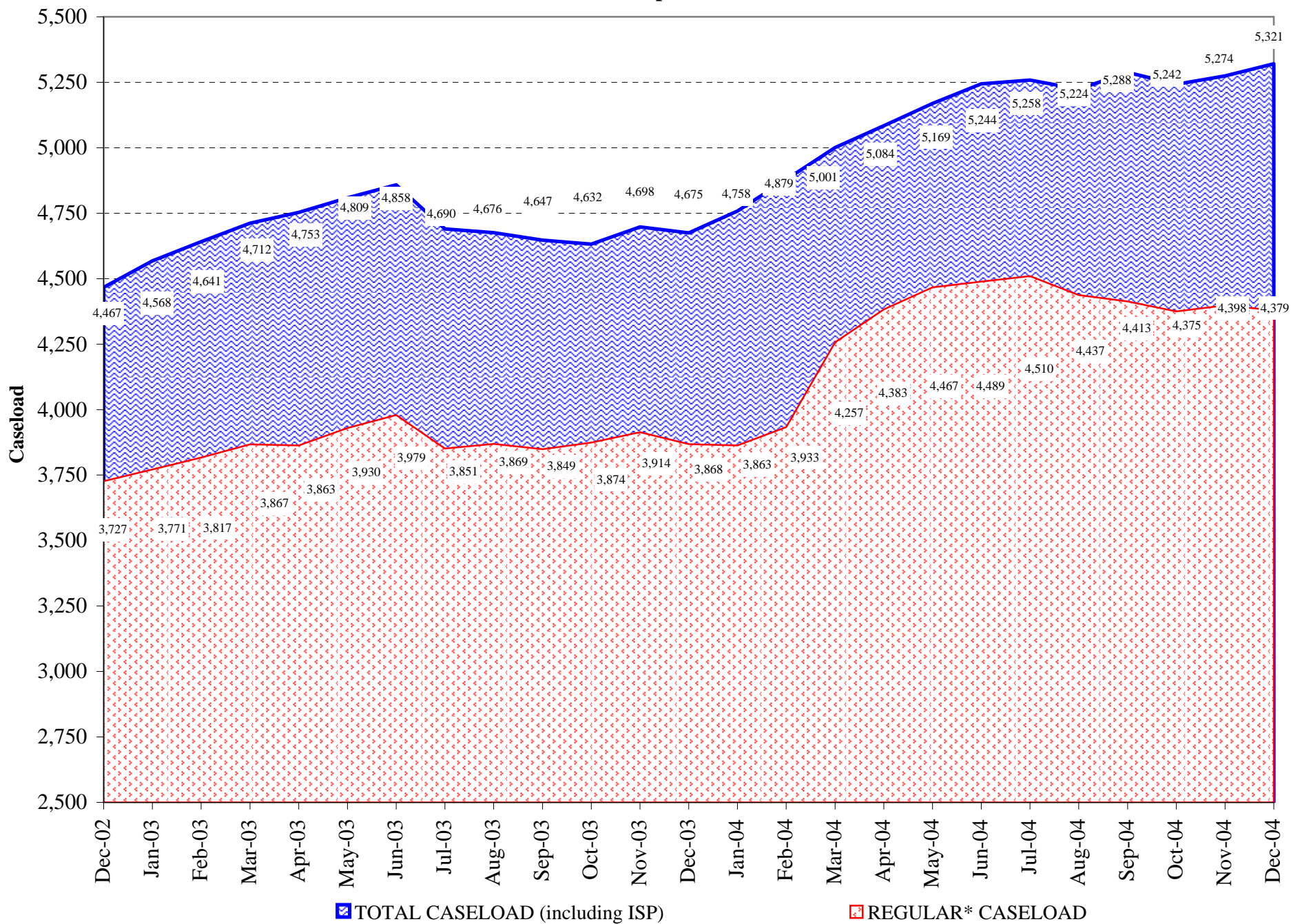


Total releases include releases to discretionary parole, mandatory parole and reparole, all types of discharges and other releases as detailed on the previous page.

COLORADO DEPARTMENT OF CORRECTIONS Adult Jurisdiction Inmate Population



COLORADO DEPARTMENT OF CORRECTIONS Parole Population



*Regular caseload includes interstate parole, but excludes out-of-state parolees and absconders.