

**COLORADO DEPARTMENT OF CORRECTIONS
MONTHLY POPULATION AND CAPACITY REPORT
AS OF JUNE 30, 2004**

6-Jul-04

	05/31/04	CAPACITY CHANGES	----- 06/30/04 -----		----- 06/30/03 -----	
	OPERATIONAL CAPACITY*		OPERATIONAL CAPACITY*	ON-GRDS POPULATION	OPERATIONAL CAPACITY*	ON-GRDS POPULATION
COLO STATE PENITENTIARY	756		756	755	756	752
CENTENNIAL CORR FAC	336		336	304	336	308
STERLING CORR FAC	2,445		2,445	2,400	2,445	2,404
LIMON CORR FAC	953		953	949	953	942
ARK VALLEY CORR FAC	1,007		1,007	1,003	1,007	997
BUENA VISTA CORR FAC	826		826	813	844	837
BUENA VISTA MIN CTR	292		292	288	292	287
COLO TERR CORR FAC	786		786	794	770	774
FORT LYON CORR FAC	500		500	463	500	494
FREMONT CORR FAC	1,471		1,471	1,462	1,471	1,457
ARROWHEAD CORR CTR	494		494	487	494	492
FOUR MILE CORR CTR	499		499	497	499	493
PRE-RELEASE CORR CTR	0		0	0	0	0
PUEBLO MINIMUM CTR	256		256	248	256	252
TRINIDAD CORR FAC	484		484	477	484	479
ADULT MALES AT Y.O.S.	30		30	20	30	21
SKYLINE CORR CTR	249		249	249	249	238
COLORADO CORR CTR	150		150	143	150	138
DELTA CORR CTR	484		484	468	484	435
RIFLE CORR CTR	192		192	183	192	189
COLO CORR ALT PROGRAM	100		100	123	100	118
COLO WOMEN'S CORR FAC	224		224	220	224	215
DENVER WOMEN'S CORR FAC	900		900	883	707	699
ADULT FEMALES AT Y.O.S.	0		0	0	0	0
DENVER REC DIAG CTR	480		480	503	480	490
SAN CARLOS CORR FAC	255		255	247	250	239
SUBTOTAL	14,169	0	14,169	13,979	13,973	13,750
CONTRACTS:						
BENT COUNTY CORR CTR	724		724	684	724	568
HUERFANO COUNTY CORR CTR	778		778	668	778	747
CROWLEY COUNTY CORR FAC	1,185		1,185	821	1,185	552
KIT CARSON COUNTY CORR FAC	820		820	730	820	554
GUADALAUPE CO TX CORR FAC	0		0	0	0	0
TALLAHATCHIE MS CORR FAC	36	85	121	121	0	0
OFF-GROUNDS POPULATION:						
ESCAPEES/WALKAWAYS				203		191
REVOCATIONS-JAIL				222		205
				0		11
JAIL BACKLOG:						
BACKLOG LESS THAN 72 HOURS			34		82	
BACKLOG GREATER THAN 72 HOURS (FISCAL YTD AVE = 168)			0		277	
BACKLOG-PAROLEES AWAITING TRANSFER			21		96	
TOTAL JAIL BACKLOG				55		455
COUNTY JAIL CONTRACTS				37		52
COMMUNITY CORRECTIONS						
COMMUNITY						
RESIDENTIAL	1,181	11	1,192	1,192	972	972
PAROLE REVOCATIONS	3	0	3	3	4	4
REVOKED-RET TO CUST	98	-22	76	76	0	0
NON-RESIDENTIAL	80	-10	70	70	52	52
REGRESSIONS	38	-3	35	35	19	19
TOTAL COMMUNITY	1,400	-24	1,376	1,376	1,047	1,047
ISP						
RESIDENTIAL	619	27	646	646	674	674
NON-RESIDENTIAL	30	-8	22	22	33	33
REGRESSIONS	4	1	5	5	7	7
TOTAL ISP	653	20	673	673	714	714
TOTAL COMM. CORRECTIONS	2,053	-4	2,049	2,049	1,761	1,761
MALE POPULATION			17,814		17,226	
FEMALE POPULATION			1,755		1,620	
TOTAL INMATE JURISDICTIONAL POPULATION				19,569		18,846

*OPERATIONAL CAPACITY INCLUDES ALL BEDS AVAILABLE FOR USE, INCLUDING MANAGEMENT CONTROL UNITS, BUT EXCLUDES EMERGENCY DOUBLE BUNKING.

COLORADO DEPARTMENT OF CORRECTIONS
MONTHLY POPULATION AND CAPACITY REPORT
AS OF JUNE 30, 2004

6-Jul-04

CURRENT MONTH CHANGES IN CAPACITY:

Jun-04	TALLAHATCHIE MS CORR FAC	INCREASE CONTRACT BEDS	85
--------	--------------------------	------------------------	----

NET MONTHLY GROWTH RATE:

CURRENT MONTH	-4
FISCAL YEAR-TO-DATE AVERAGE	60

YOUTHFUL OFFENDER SYSTEM

	----- 06/30/04 -----					06/30/03
	DRDC	PUEBLO	CONTRACT FACILITIES	COMM. CORR.	TOTAL POPULATION	TOTAL POPULATION
INTAKE/IDO	0	8			8	4
RFP/REMEDICATION	0	24			24	22
PHASE I	0	149	0		149	149
PHASE II	0	14			14	21
PHASE III		0		38	38	37
OFF GROUNDS/BACKLOG					2	8
TOTAL Y.O.S. POPULATION	0	195	0	38	235	241

	CURRENT MONTH	FISCAL YR. TO DATE
YOS ADMISSIONS	6	67
YOS RELEASES:		
COMPLETION OF SENTENCE	5	53
JUDICIAL RELEASE TO PROB/CT ORD DISCHG	1	3
JUDICIAL TRANSFER TO DOC	0	0
TERMINATION/FAILURE	2	17
DECEASED	0	0
TOTAL RELEASES	8	73

PAROLE CASELOAD

	----- 06/30/04 -----			----- 05/31/04 -----		----- 06/30/03 -----	
	DOMESTIC	INTERST PAR/PROB	TOTAL CASELOAD	DOMESTIC	TOTAL CASELOAD	DOMESTIC	TOTAL CASELOAD
DENVER REGION							
REGULAR	1,697	121	1,818	1,674	1,795	1,507	1,609
ISP	337		337	294	294	393	393
SUBTOTAL	2,034	121	2,155	1,968	2,089	1,900	2,002
NORTHEAST REGION							
REGULAR	1,150	59	1,209	1,129	1,190	1,031	1,117
ISP	196		196	199	199	183	183
SUBTOTAL	1,346	59	1,405	1,328	1,389	1,214	1,300
SOUTHEAST REGION							
REGULAR	870	61	931	886	946	733	788
ISP	163		163	157	157	212	212
SUBTOTAL	1,033	61	1,094	1,043	1,103	945	1,000
WESTERN REGION							
REGULAR	472	59	531	477	536	410	465
ISP	59		59	52	52	91	91
SUBTOTAL	531	59	590	529	588	501	556
TOTAL CASELOAD							
REGULAR	4,189	300	4,489	4,166	4,467	3,681	3,979
ISP	755		755	702	702	879	879
TOTAL	4,944	300	5,244	4,868	5,169	4,560	4,858
ADDITIONAL CASELOAD:							
OUT-OF-STATE PAROLEES			1,393		1,391		1,377
PAROLEE ABSCONDERS			601		572		529

COLORADO DEPARTMENT OF CORRECTIONS
MONTHLY POPULATION AND CAPACITY REPORT
AS OF JUNE 30, 2004

6-Jul-04

	06/30/2004 POPULATION			----- FINAL CUSTODY DESIGNATION* -----					
	On-Grds.	Off-Grds	TOTAL	Uncls.	Ad.Seg	Close	Medium	Min.-Res.	Minimum
MALE POPULATION									
COLO STATE PENITENTIARY	755	8	763			5		3	
CENTENNIAL CORR FAC	304	1	305			249	22	8	8
STERLING CORR FAC	2,400	20	2,420			554	563	665	432
LIMON CORR FAC	949	12	961			598	248	77	27
ARK VALLEY CORR FAC	1,003	22	1,025	1	3	353	350	210	108
BUENA VISTA CORR FAC	813	12	825			274	326	133	87
BUENA VISTA MIN CTR	288	0	288				2	223	63
COLO TERR CORR FAC	794	7	801			200	294	206	97
FORT LYON CORR FAC	463	6	469			9	239	145	76
FREMONT CORR FAC	1,462	10	1,472			288	458	449	266
ARROWHEAD CORR CTR	487	1	488				4	296	188
FOUR MILE CORR CTR	497	0	497				5	354	138
PRE-RELEASE CORR CTR	0	0	0						
TRINIDAD CORR FAC	477	4	481		1		14	390	76
ADULT MALES AT Y.O.S.	20	0	20				14	5	1
SKYLINE CORR CTR	249	1	250				1	1	248
COLORADO CORR CTR	143	1	144						144
DELTA CORR CTR	468	3	471						471
RIFLE CORR CTR	183	1	184					2	182
COLO CORR ALT PROGRAM	114	6	120				2	14	104
DENVER REC DIAG CTR	501	18	519	167	11	38	69	113	121
SAN CARLOS CORR FAC	247	3	250			96	57	46	26
CONTRACTS:									
BENT COUNTY CORR CTR	684	8	692			18	373	192	109
HUERFANO COUNTY CORR CTR	668	15	683			27	427	143	81
CROWLEY COUNTY CORR FAC	821	15	836			7	432	268	116
KIT CARSON COUNTY CORR FAC	730	12	742			16	425	211	87
GUADALAUPE CO TX CORR FAC	0	0	0						
TALLAHATCHIE MS CORR FAC	121	0	121		121				
COMMUNITY/ISP	1,528	73	1,601			12	67	55	1,467
TOTAL MALE POPULATION	17,169	259	17,428	168	1,192	2,744	4,392	4,209	4,723
PERCENT OF TOTAL				1.0%	6.8%	15.7%	25.2%	24.2%	27.1%
FEMALE POPULATION									
COLO WOMEN'S CORR FAC	220	1	221			74	78	43	23
DENVER WOMEN'S CORR FAC	883	11	894	18	30	79	239	331	197
PUEBLO MINIMUM CTR	248	3	251				1	162	88
ADULT FEMALES AT Y.O.S.	0	0	0						
COLO CORR ALT PROGRAM	9	1	10				1		9
SAN CARLOS CORR FAC	0	0	0						
DENVER REC DIAG CTR INF	2	0	2			1		1	
COLO TERR CORR FAC INF.	0	0	0						
COMMUNITY/ISP	310	19	329			3	12	18	296
TOTAL FEMALE POPULATION	1,672	35	1,707	18	33	157	331	555	613
PERCENT OF TOTAL				1.1%	1.9%	9.2%	19.4%	32.5%	35.9%

*Final custody designations for jail backlog and contracts, fugitive, community regressions, and parole revocations are not reported.

COLORADO DEPARTMENT OF CORRECTIONS
ADULT INMATE JURISDICTIONAL POPULATION (1)

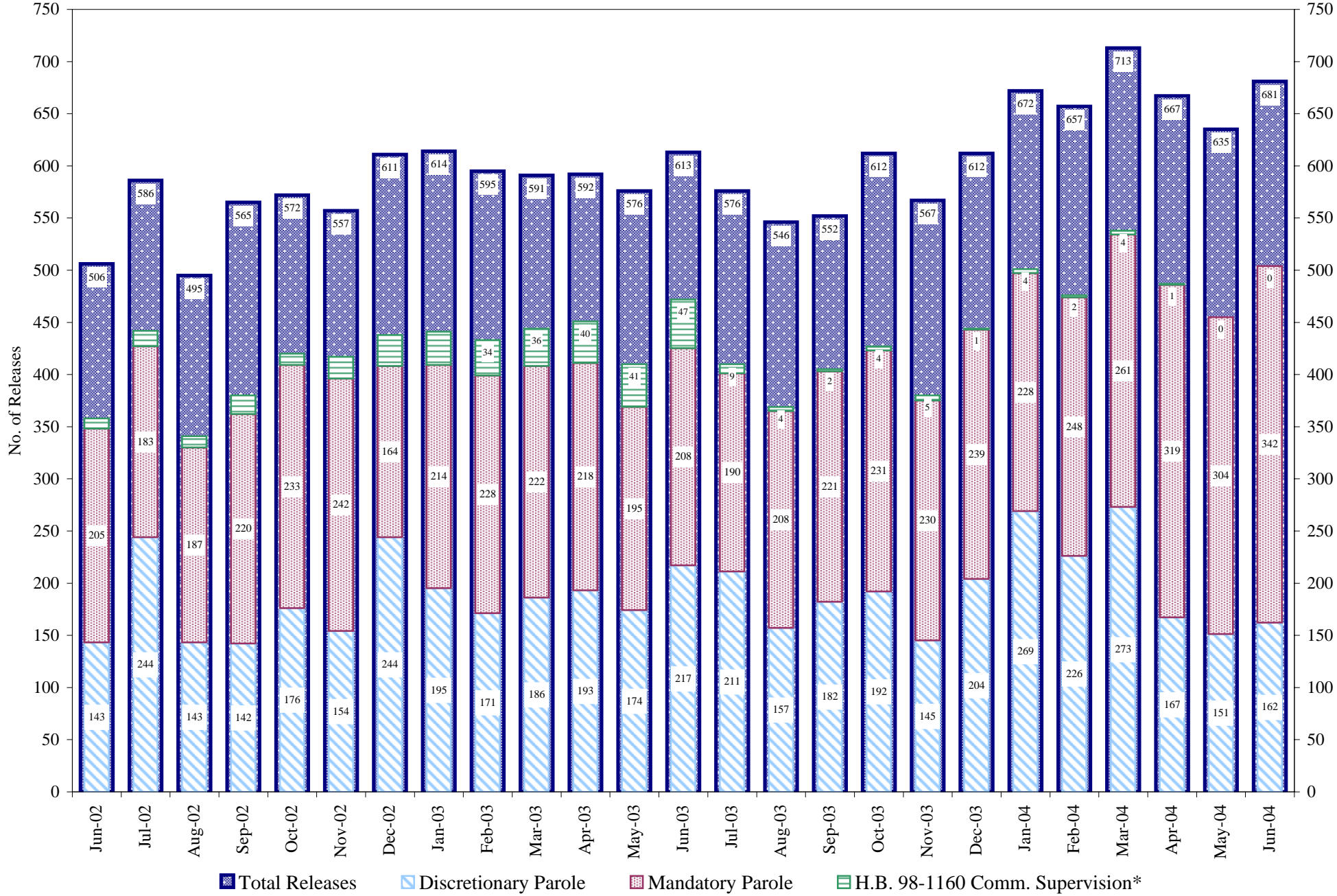
DATE: 7/6/2004

DATE	MALE JURISDICTIONAL POPULATION	FEMALE JURISDICTIONAL POPULATION	TOTAL INMATE JURISDICTIONAL POPULATION	NET CHANGE	FISCAL Y-T-D AVG
06-30-04	17,814	1,755	19,569	-4	60
05-31-04	17,818	1,755	19,573	-6	
04-30-04	17,823	1,756	19,579	25	
03-31-04	17,780	1,774	19,554	53	
02-29-04	17,738	1,763	19,501	6	
01-31-04	17,736	1,759	19,495	41	
12-31-03	17,704	1,750	19,454	136	
11-30-03	17,594	1,724	19,318	25	
10-31-03	17,585	1,708	19,293	94	
09-30-03	17,503	1,696	19,199	119	
08-31-03	17,407	1,673	19,080	112	
07-31-03	17,318	1,650	18,968	122	
06-30-03	17,226	1,620	18,846	69	
05-31-03	17,162	1,615	18,777	81	
04-30-03	17,088	1,608	18,696	52	
03-31-03	17,047	1,597	18,644	55	
02-28-03	17,006	1,583	18,589	16	
01-31-03	16,997	1,576	18,573	22	
12-31-02	16,969	1,582	18,551	31	67
11-30-02	16,945	1,575	18,520	58	
10-31-02	16,896	1,566	18,462	80	
09-30-02	16,834	1,548	18,382	44	
08-31-02	16,790	1,548	18,338	222	
07-31-02	16,589	1,527	18,116	71	
06-30-02	16,539	1,506	18,045		101
06-30-01	15,493	1,340	16,833		70
06-30-00	14,733	1,266	15,999		106
06-30-99	13,547	1,179	14,726		89
06-30-98	12,647	1,016	13,663		89
06-30-97	11,681	909	12,590		84
06-30-96	10,808	769	11,577		76
06-30-95	10,000	669	10,669		55
06-30-94	9,382	623	10,005		64
06-30-93	8,712	530	9,242		39
06-30-92	8,269	505	8,774		61
06-30-91	7,598	445	8,043		31
06-30-90	7,215	451	7,666		58
06-30-89	6,579	392	6,971		

(1) Adult inmate jurisdictional population includes on-grounds, off-grounds, out-of-state, escapees, and jail backlog and excludes offenders sentenced to the Youthful Offender System (Y.O.S.).

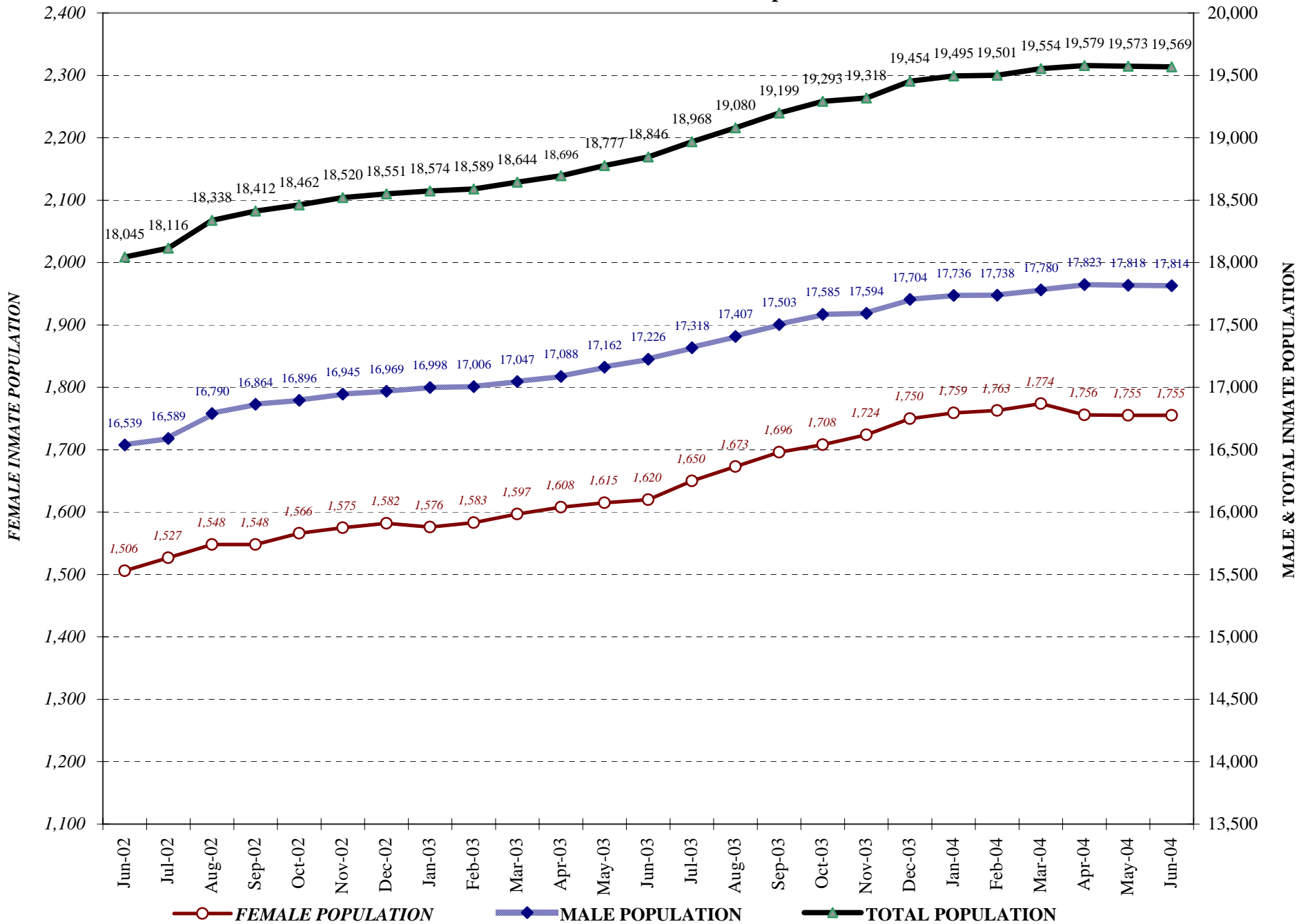
COLORADO DEPARTMENT OF CORRECTIONS

Adult Prison Releases

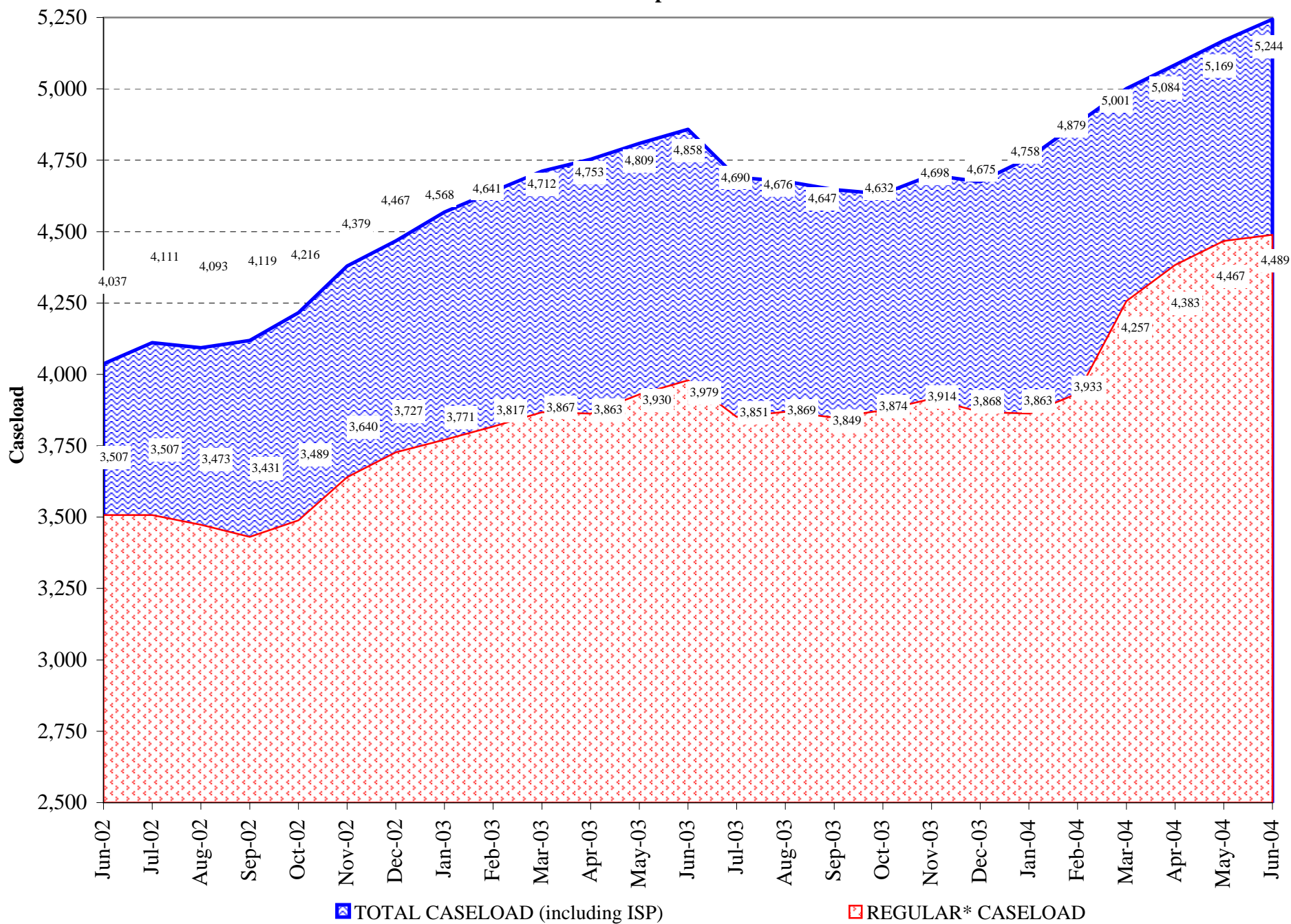


*Beginning July 2003 the count represents discharges resulting from elimination of community supervision.

COLORADO DEPARTMENT OF CORRECTIONS Adult Jurisdiction Inmate Population



COLORADO DEPARTMENT OF CORRECTIONS Parole Population



*Regular caseload includes interstate parole, but excludes out-of-state parolees and absconders.