

COLORADO DEPARTMENT OF CORRECTIONS
MONTHLY POPULATION AND CAPACITY REPORT
AS OF DECEMBER 31, 2003

REVISED 13-Jan-04

	11/30/03	CAPACITY CHANGES	----- 12/31/03 -----		----- 12/31/02 -----	
	OPERATIONAL CAPACITY*		OPERATIONAL CAPACITY*	ON-GRDS POPULATION	OPERATIONAL CAPACITY*	ON-GRDS POPULATION
COLO STATE PENITENTIARY	756		756	749	756	732
CENTENNIAL CORR FAC	336		336	319	336	334
STERLING CORR FAC	2,445		2,445	2,413	2,445	2,417
LIMON CORR FAC	953		953	950	953	950
ARK VALLEY CORR FAC	1,007		1,007	999	1,007	1,006
BUENA VISTA CORR FAC	826		826	825	826	825
BUENA VISTA MIN CTR	292		292	288	292	286
COLO TERR CORR FAC	786		786	780	770	789
FORT LYON CORR FAC	500		500	481	500	480
FREMONT CORR FAC	1,467		1,467	1,463	1,471	1,451
ARROWHEAD CORR CTR	494		494	491	494	491
FOUR MILE CORR CTR	499		499	495	499	495
PRE-RELEASE CORR CTR	0		0	0	0	0
PUEBLO MINIMUM CTR	256		256	255	256	250
TRINIDAD CORR FAC	484		484	479	484	476
ADULT MALES AT Y.O.S.	30		30	26	0	0
SKYLINE CORR CTR	249		249	242	249	249
COLORADO CORR CTR	150		150	134	150	150
DELTA CORR CTR	484		484	446	484	478
RIFLE CORR CTR	192		192	192	192	192
COLO CORR ALT PROGRAM	100		100	112	100	89
COLO WOMEN'S CORR FAC	224		224	219	224	221
DENVER WOMEN'S CORR FAC	804		804	789	707	697
ADULT FEMALES AT Y.O.S.	0		0	0	0	0
DENVER REC DIAG CTR	480		480	494	480	496
SAN CARLOS CORR FAC	255		255	253	250	242
SUBTOTAL	14,069	0	14,069	13,894	13,925	13,796
CONTRACTS:						
BENT COUNTY CORR CTR	724		724	720	724	592
HUERFANO COUNTY CORR CTR	778		778	720	778	629
CROWLEY COUNTY CORR FAC	1,185		1,185	874	1,185	638
KIT CARSON COUNTY CORR FAC	820		820	699	820	593
OFF-GROUNDS POPULATION:						
ESCAPEES/WALKAWAYS				179		182
ESCAPEES/WALKAWAYS				208		180
REVOCATIONS-JAIL				11		11
JAIL BACKLOG:						
BACKLOG LESS THAN 72 HOURS			96		56	
BACKLOG GREATER THAN 72 HOURS (FISCAL YTD AVE = 209)			82		65	
BACKLOG-PAROLEES AWAITING TRANSFER			65		43	
TOTAL JAIL BACKLOG				243		164
COUNTY JAIL CONTRACTS				46		39
COMMUNITY CORRECTIONS						
COMMUNITY						
RESIDENTIAL	1,086	-20	1,066	1,066	927	927
PAROLE REVOCATIONS	10	1	11	11	3	3
REVOKED-RET TO CUST	0	13	13	13	0	0
NON-RESIDENTIAL	57	-2	55	55	48	48
REGRESSIONS	25	-6	19	19	25	25
TOTAL COMMUNITY	1,178	-14	1,164	1,164	1,003	1,003
ISP						
RESIDENTIAL	615	27	642	642	668	668
NON-RESIDENTIAL	42	3	45	45	39	39
REGRESSIONS	4	5	9	9	17	17
TOTAL ISP	661	35	696	696	724	724
TOTAL COMM. CORRECTIONS	1,839	21	1,860	1,860	1,727	1,727
MALE POPULATION			17,704		16,969	
FEMALE POPULATION			1,750		1,582	
TOTAL INMATE JURISDICTIONAL POPULATION				19,454		18,551

*OPERATIONAL CAPACITY INCLUDES ALL BEDS AVAILABLE FOR USE, INCLUDING MANAGEMENT CONTROL UNITS BUT EXCLUDES EMERGENCY DOUBLE BUNKING.

COLORADO DEPARTMENT OF CORRECTIONS
MONTHLY POPULATION AND CAPACITY REPORT
AS OF DECEMBER 31, 2003

REVISED

13-Jan-04

CURRENT MONTH CHANGES IN CAPACITY:

NONE

NET MONTHLY GROWTH RATE:

CURRENT MONTH	136
FISCAL YEAR-TO-DATE AVERAGE	101

YOUTHFUL OFFENDER SYSTEM

	----- 12/31/03 -----				12/31/02
	DRDC	PUEBLO	CONTRACT FACILITIES	COMM. CORR.	TOTAL POPULATION
INTAKE/IDO	0	0			5
RFP/REMEDATION	0	23			35
PHASE I	0	159	0		155
PHASE II	0	4			14
PHASE III		0		50	42
OFF GROUNDS/BACKLOG					4
TOTAL Y.O.S. POPULATION	0	186	0	50	242

	CURRENT MONTH	FISCAL YR. TO DATE
YOS ADMISSIONS	4	32
YOS RELEASES:		
COMPLETION OF SENTENCE	4	22
JUDICIAL RELEASE TO PROB/CT ORD DISCHG	0	1
JUDICIAL TRANSFER TO DOC	0	0
TERMINATION/FAILURE	0	8
DECEASED	0	0
TOTAL RELEASES	4	31

PAROLE CASELOAD

	----- 12/31/03 -----			----- 11/30/03 -----		----- 12/31/02 -----	
	DOMESTIC	INTERST PAR/PROB	TOTAL CASELOAD	DOMESTIC	TOTAL CASELOAD	DOMESTIC	TOTAL CASELOAD
DENVER REGION							
REGULAR	1,447	104	1,551	1,487	1,587	1,378	1,482
ISP	324		324	299	299	320	320
SUBTOTAL	1,771	104	1,875	1,786	1,886	1,698	1,802
NORTHEAST REGION							
REGULAR	1,008	82	1,090	1,016	1,097	1,033	1,123
ISP	201		201	181	181	153	153
SUBTOTAL	1,209	82	1,291	1,197	1,278	1,186	1,276
SOUTHEAST REGION							
REGULAR	722	51	773	716	773	667	714
ISP	201		201	216	216	189	189
SUBTOTAL	923	51	974	932	989	856	903
WESTERN REGION							
REGULAR	401	53	454	404	457	360	408
ISP	81		81	88	88	78	78
SUBTOTAL	482	53	535	492	545	438	486
TOTAL CASELOAD							
REGULAR	3,578	290	3,868	3,623	3,914	3,352	3,728
ISP	807		807	784	784	739	739
TOTAL	4,385	290	4,675	4,407	4,698	4,091	4,467
ADDITIONAL CASELOAD:							
OUT-OF-STATE PAROLEES			1,363		1,373		1,286
PAROLEE ABSCONDERS			521		498		462

COLORADO DEPARTMENT OF CORRECTIONS
MONTHLY POPULATION AND CAPACITY REPORT
AS OF DECEMBER 31, 2003

13-Jan-04

	12/31/2003 POPULATION			----- FINAL CUSTODY DESIGNATION* -----					
	On-Grds.	Off-Grds	TOTAL	Uncls.	Ad.Seg	Close	Medium	Min.-Res.	Minimum
MALE POPULATION									
COLO STATE PENITENTIARY	749	6	755			742	10	1	1
CENTENNIAL CORR FAC	319	3	322			7	286	27	2
STERLING CORR FAC	2,413	19	2,432			201	495	570	710
LIMON CORR FAC	950	6	956			9	588	252	74
ARK VALLEY CORR FAC	999	11	1,010			1	407	335	163
BUENA VISTA CORR FAC	825	8	833			8	261	313	135
BUENA VISTA MIN CTR	288	1	289					5	248
COLO TERR CORR FAC	780	9	789			5	213	240	207
FORT LYON CORR FAC	481	8	489				2	235	149
FREMONT CORR FAC	1,463	16	1,479			8	302	491	425
ARROWHEAD CORR CTR	491	2	493				1	3	289
FOUR MILE CORR CTR	495	4	499					7	355
PRE-RELEASE CORR CTR	0	0	0						
TRINIDAD CORR FAC	479	2	481					13	378
ADULT MALES AT Y.O.S.	26	1	27					17	10
SKYLINE CORR CTR	242	1	243						3
COLORADO CORR CTR	134	1	135						
DELTA CORR CTR	446	6	452			1			2
RIFLE CORR CTR	192	1	193						
COLO CORR ALT PROGRAM	107	5	112					1	9
DENVER REC DIAG CTR	492	13	505	135	8	35	88	159	80
SAN CARLOS CORR FAC	253	4	257			24	100	55	51
CONTRACTS:									
BENT COUNTY CORR CTR	720	11	731				16	397	203
HUERFANO COUNTY CORR CTR	720	10	730				10	422	201
CROWLEY COUNTY CORR FAC	874	14	888			7	18	504	244
KIT CARSON COUNTY CORR FAC	699	8	707			2	7	450	173
COMMUNITY/ISP	1,419	90	1,509				9	72	82
TOTAL MALE POPULATION	17,056	260	17,316	135	1,023	2,760	4,498	4,273	4,627
PERCENT OF TOTAL				0.8%	5.9%	15.9%	26.0%	24.7%	26.7%
FEMALE POPULATION									
COLO WOMEN'S CORR FAC	219	1	220				66	85	44
DENVER WOMEN'S CORR FAC	789	3	792	21	29	77	178	330	157
PUEBLO MINIMUM CTR	255	4	259						156
ADULT FEMALES AT Y.O.S.	0	0	0						
COLO CORR ALT PROGRAM	5	0	5					1	
SAN CARLOS CORR FAC	0	0	0						
DENVER REC DIAG CTR INF	2	0	2			1			1
COLO TERR CORR FAC INF.	0	0	0						
COMMUNITY/ISP	289	10	299					23	21
TOTAL FEMALE POPULATION	1,559	18	1,577	21	30	143	287	552	544
PERCENT OF TOTAL				1.3%	1.9%	9.1%	18.2%	35.0%	34.5%

*Final custody designations for jail backlog and contracts, fugitive, community regressions, and parole revocations are not reported.

COLORADO DEPARTMENT OF CORRECTIONS

ADULT INMATE JURISDICTIONAL POPULATION (1)

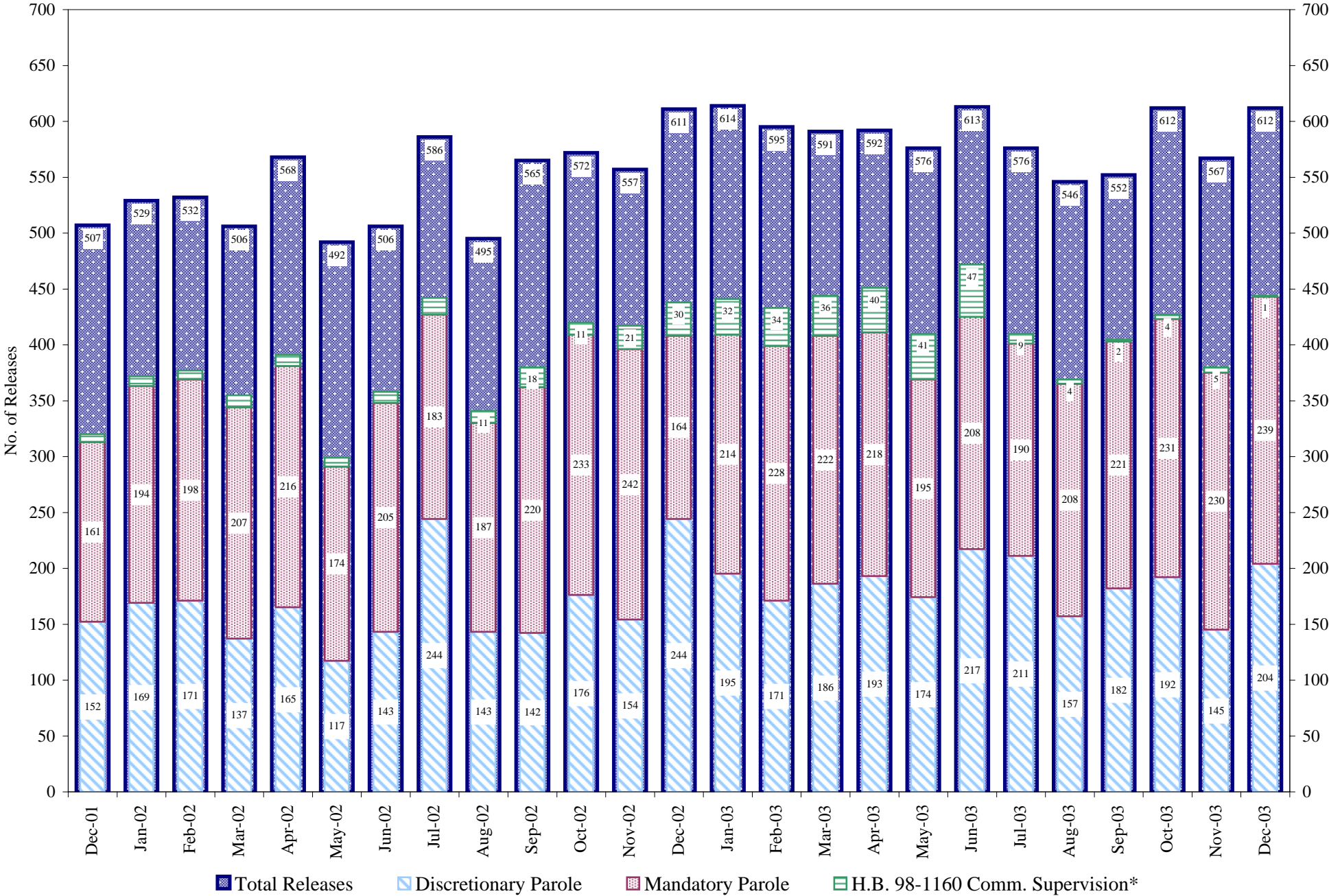
REVISED DATE: 1/13/2004

DATE	MALE JURISDICTIONAL POPULATION	FEMALE JURISDICTIONAL POPULATION	TOTAL INMATE JURISDICTIONAL POPULATION	NET CHANGE	FISCAL Y-T-D AVG
12-31-03	17,704	1,750	19,454	136	101
11-30-03	17,594	1,724	19,318	25	
10-31-03	17,585	1,708	19,293	94	
09-30-03	17,503	1,696	19,199	119	
08-31-03	17,407	1,673	19,080	112	
07-31-03	17,318	1,650	18,968	122	
06-30-03	17,226	1,620	18,846	69	
05-31-03	17,162	1,615	18,777	81	
04-30-03	17,088	1,608	18,696	52	
03-31-03	17,047	1,597	18,644	55	
02-28-03	17,006	1,583	18,589	16	
01-31-03	16,997	1,576	18,573	22	
12-31-02	16,969	1,582	18,551	31	67
11-30-02	16,945	1,575	18,520	58	
10-31-02	16,896	1,566	18,462	80	
09-30-02	16,834	1,548	18,382	44	
08-31-02	16,790	1,548	18,338	222	
07-31-02	16,589	1,527	18,116	71	
06-30-02	16,539	1,506	18,045		101
06-30-01	15,493	1,340	16,833		70
06-30-00	14,733	1,266	15,999		106
06-30-99	13,547	1,179	14,726		89
06-30-98	12,647	1,016	13,663		89
06-30-97	11,681	909	12,590		84
06-30-96	10,808	769	11,577		76
06-30-95	10,000	669	10,669		55
06-30-94	9,382	623	10,005		64
06-30-93	8,712	530	9,242		39
06-30-92	8,269	505	8,774		61
06-30-91	7,598	445	8,043		31
06-30-90	7,215	451	7,666		58
06-30-89	6,579	392	6,971		

(1) Adult inmate jurisdictional population includes on-grounds, off-grounds, out-of-state, escapees, and jail backlog and excludes offenders sentenced to the Youthful Offender System (Y.O.S.).

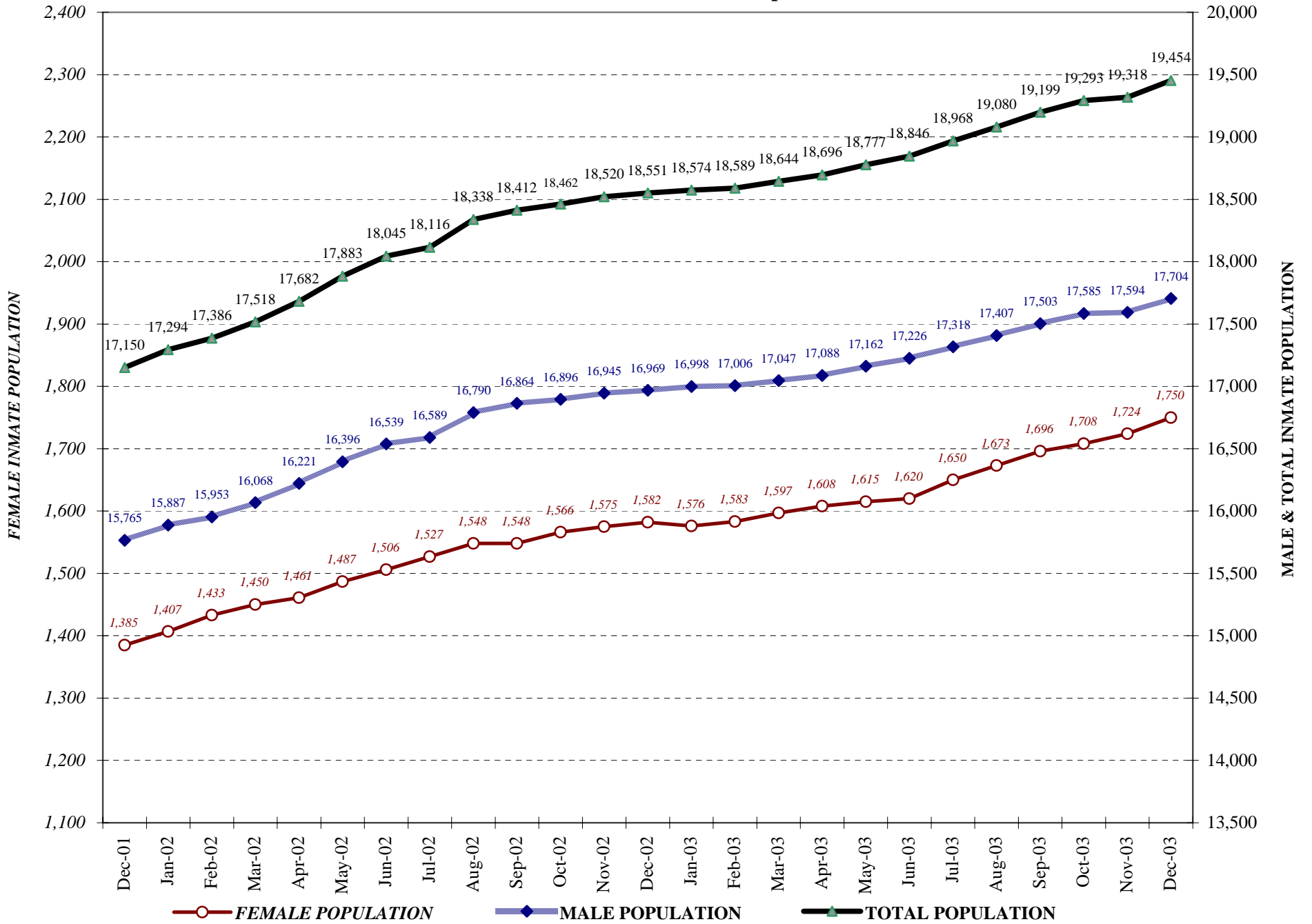
COLORADO DEPARTMENT OF CORRECTIONS

Adult Prison Releases



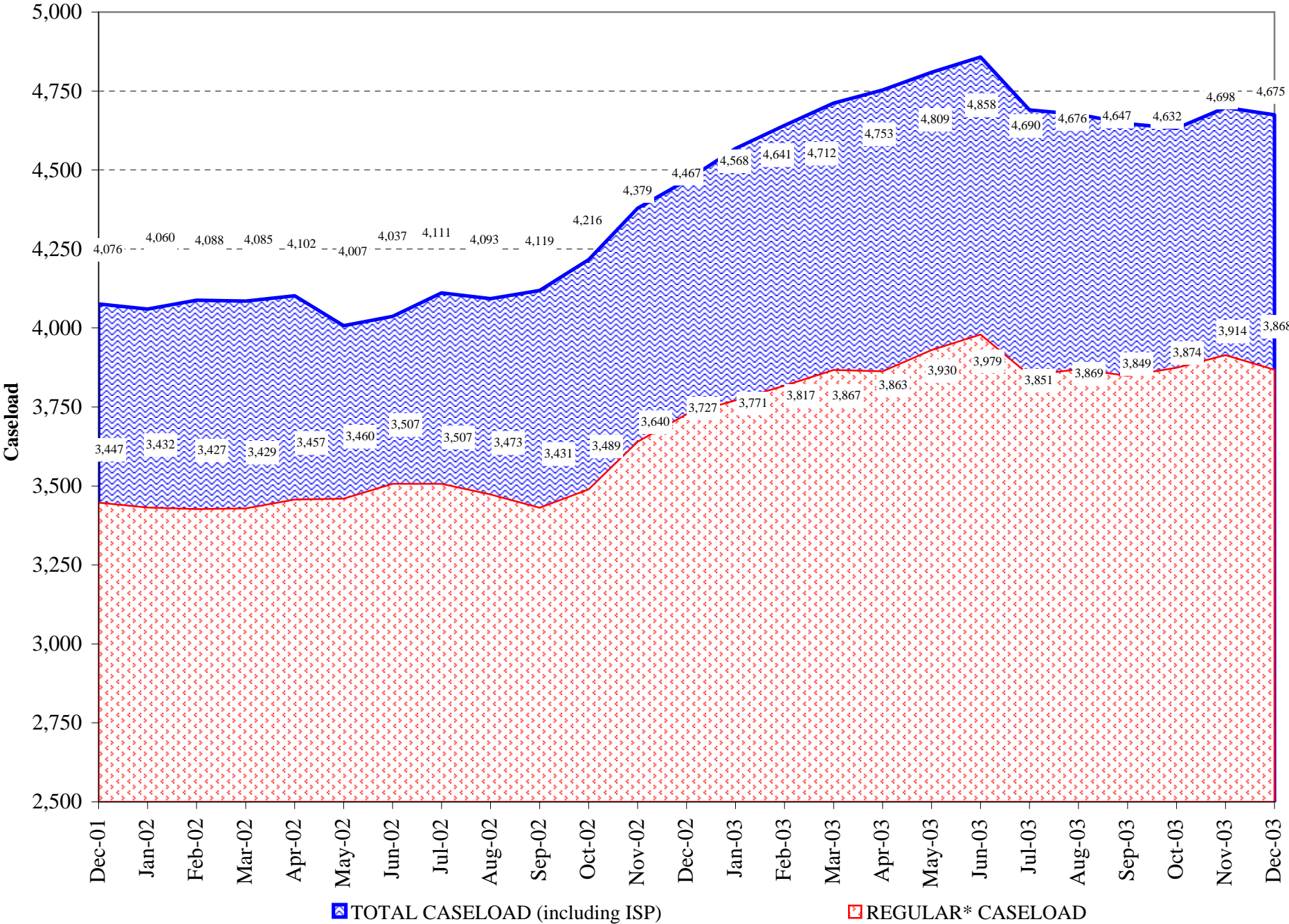
*Beginning July 2003 the count represents discharges resulting from elimination of community supervision.

COLORADO DEPARTMENT OF CORRECTIONS Adult Jurisdiction Inmate Population



COLORADO DEPARTMENT OF CORRECTIONS

Parole Population



*Regular caseload includes interstate parole, but excludes out-of-state parolees and absconders.