

COLORADO DEPARTMENT OF CORRECTIONS
MONTHLY POPULATION AND CAPACITY REPORT
AS OF JUNE 30, 2003

10-Jul-03

	05/31/03	CAPACITY CHANGES	----- 06/30/03 -----		----- 06/30/02 -----	
	OPERATIONAL CAPACITY*		OPERATIONAL CAPACITY*	ON-GRDS POPULATION	OPERATIONAL CAPACITY*	ON-GRDS POPULATION
COLO STATE PENITENTIARY	756		756	752	756	739
CENTENNIAL CORR FAC	336		336	308	336	331
STERLING CORR FAC	2,445		2,445	2,404	2,445	2,339
LIMON CORR FAC	953		953	942	953	942
ARK VALLEY CORR FAC	1,007		1,007	997	1,032	1,026
BUENA VISTA CORR FAC	844		844	837	856	846
BUENA VISTA MIN CTR	292		292	287	292	286
COLO TERR CORR FAC	770		770	774	725	729
FORT LYON CORR FAC	500		500	494	200	183
FREMONT CORR FAC	1,471		1,471	1,457	1,479	1,458
ARROWHEAD CORR CTR	494		494	492	484	479
FOUR MILE CORR CTR	499		499	493	484	479
PRE-RELEASE CORR CTR	0		0	0	0	0
PUEBLO MINIMUM CTR	256		256	252	256	254
TRINIDAD CORR FAC	484		484	479	196	187
ADULT MALES AT Y.O.S.	0	30	30	21	120	96
SKYLINE CORR CTR	249		249	238	249	247
COLORADO CORR CTR	150		150	138	150	148
DELTA CORR CTR	484		484	435	484	468
RIFLE CORR CTR	192		192	189	192	188
COLO CORR ALT PROGRAM	100		100	118	100	93
COLO WOMEN'S CORR FAC	224		224	215	224	215
DENVER WOMEN'S CORR FAC	707		707	699	642	612
ADULT FEMALES AT Y.O.S.	0		0	0	0	0
DENVER REC DIAG CTR	480		480	490	480	485
SAN CARLOS CORR FAC	250		250	239	250	248
SUBTOTAL	13,943	30	13,973	13,750	13,385	13,078
CONTRACTS:						
BENT COUNTY CORR CTR	724		724	568	724	556
HUERFANO COUNTY CORR CTR	778		778	747	778	617
CROWLEY COUNTY CORR FAC	1,185		1,185	552	1,185	648
KIT CARSON COUNTY CORR FAC	820		820	554	820	531
OFF-GROUNDS POPULATION:						
ESCAPEES/WALKAWAYS				191		239
REVOCATIONS-JAIL				205		176
				11		8
JAIL BACKLOG:						
BACKLOG LESS THAN 72 HOURS			82		93	
BACKLOG GREATER THAN 72 HOURS (FISCAL YTD AVE = 182)			277		213	
BACKLOG-PAROLEES AWAITING TRANSFER			96		88	
TOTAL JAIL BACKLOG				455		394
COUNTY JAIL CONTRACTS				52		84
COMMUNITY CORRECTIONS						
COMMUNITY						
RESIDENTIAL	966	6	972	972	1,025	1,025
PAROLE REVOCATIONS	3	1	4	4	4	4
NON-RESIDENTIAL	50	2	52	52	53	53
REGRESSIONS	16	3	19	19	11	11
TOTAL COMMUNITY	1,035	12	1,047	1,047	1,093	1,093
ISP						
RESIDENTIAL	687	-13	674	674	571	571
NON-RESIDENTIAL	36	-3	33	33	43	43
REGRESSIONS	4	3	7	7	7	7
TOTAL ISP	727	-13	714	714	621	621
TOTAL COMM. CORRECTIONS	1,762	-1	1,761	1,761	1,714	1,714
MALE POPULATION			17,226		16,539	
FEMALE POPULATION			1,620		1,506	
TOTAL INMATE JURISDICTIONAL POPULATION				18,846		18,045

*OPERATIONAL CAPACITY INCLUDES ALL BEDS AVAILABLE FOR USE, INCLUDING MANAGEMENT CONTROL UNITS BUT EXCLUDES EMERGENCY DOUBLE BUNKING.

COLORADO DEPARTMENT OF CORRECTIONS
MONTHLY POPULATION AND CAPACITY REPORT
AS OF JUNE 30, 2003

Revised: 06/30/04

CURRENT MONTH CHANGES IN CAPACITY:

Jun-03 ADULT MALES AT Y.O.S. 30

NET MONTHLY GROWTH RATE:

CURRENT MONTH 69
 FISCAL YEAR-TO-DATE AVERAGE 67

YOUTHFUL OFFENDER SYSTEM

	----- 06/30/03 -----				06/30/02
	DRDC	PUEBLO	CONTRACT FACILITIES	COMM. CORR.	TOTAL POPULATION
INTAKE/IDO	0	4			4
RFP/REMEDATION	0	22			22
PHASE I	0	149	0		172
PHASE II	0	21			20
PHASE III		0		37	37
OFF GROUNDS/BACKLOG					8
TOTAL Y.O.S. POPULATION	0	196	0	37	241

	CURRENT MONTH	FISCAL YR. TO DATE
YOS ADMISSIONS	5	59
YOS RELEASES:		
COMPLETION OF SENTENCE	8	53
JUDICIAL RELEASE TO PROB/CT ORD DISCHG	1	2
JUDICIAL TRANSFER TO DOC	0	0
TERMINATION/FAILURE	3	17
DECEASED	0	0
TOTAL RELEASES	12	72

PAROLE CASELOAD

	----- 06/30/03 -----			----- 05/31/03 -----		----- 06/30/02 -----	
	DOMESTIC	INTERST PAR/PROB	TOTAL CASELOAD	DOMESTIC	TOTAL CASELOAD	DOMESTIC	TOTAL CASELOAD
DENVER REGION							
REGULAR	1,507	102	1,609	1,482	1,579	1,178	1,269
ISP	393		393	401	401	239	239
SUBTOTAL	1,900	102	2,002	1,883	1,980	1,417	1,508
NORTHEAST REGION							
REGULAR	1,031	86	1,117	1,022	1,107	1,039	1,137
ISP	183		183	194	194	103	103
SUBTOTAL	1,214	86	1,300	1,216	1,301	1,142	1,240
SOUTHEAST REGION							
REGULAR	733	55	788	737	794	667	723
ISP	212		212	198	198	139	139
SUBTOTAL	945	55	1,000	935	992	806	862
WESTERN REGION							
REGULAR	410	55	465	402	450	332	378
ISP	91		91	86	86	49	49
SUBTOTAL	501	55	556	488	536	381	427
TOTAL CASELOAD							
REGULAR	3,681	298	3,979	3,643	3,930	3,216	3,507
ISP	879		879	879	879	530	530
TOTAL	4,560	298	4,858	4,522	4,809	3,746	4,037
ADDITIONAL CASELOAD:							
OUT-OF-STATE PAROLEES			1,377		1,345		1,279
PAROLEE ABSCONDERS			529		498		401

COLORADO DEPARTMENT OF CORRECTIONS
MONTHLY POPULATION AND CAPACITY REPORT
AS OF JUNE 30, 2003

10-Jul-03

	06/30/2003 POPULATION			----- FINAL CUSTODY DESIGNATION* -----					
	On-Grds.	Off-Grds	TOTAL	Uncls.	Ad.Seg	Close	Medium	Min.-Res.	Minimum
MALE POPULATION									
COLO STATE PENITENTIARY	752	7	759		739	12	0	7	1
CENTENNIAL CORR FAC	308	1	309			287	15	2	5
STERLING CORR FAC	2,404	27	2,431		180	489	684	654	424
LIMON CORR FAC	942	9	951		2	587	238	81	43
ARK VALLEY CORR FAC	997	4	1,001			362	363	162	114
BUENA VISTA CORR FAC	837	14	851			248	304	153	146
BUENA VISTA MIN CTR	287	0	287				1	229	57
COLO TERR CORR FAC	774	10	784			207	247	211	119
FORT LYON CORR FAC	494	8	502			3	211	195	93
FREMONT CORR FAC	1,457	19	1,476			308	457	425	286
ARROWHEAD CORR CTR	492	4	496				3	305	188
FOUR MILE CORR CTR	493	3	496				4	383	109
PRE-RELEASE CORR CTR	0	0	0						
TRINIDAD CORR FAC	479	9	488				14	370	104
ADULT MALES AT Y.O.S.	21	2	23			1	12	9	1
SKYLINE CORR CTR	238	0	238				1	7	230
COLORADO CORR CTR	138	1	139						139
DELTA CORR CTR	435	2	437				2	1	434
RIFLE CORR CTR	189	1	190					5	185
COLO CORR ALT PROGRAM	109	6	115				3	7	105
DENVER REC DIAG CTR	489	18	507	106	5	30	131	170	65
SAN CARLOS CORR FAC	239	4	243		26	100	37	48	32
CONTRACTS:									
BENT COUNTY CORR CTR	568	9	577			17	274	183	103
HUERFANO COUNTY CORR CTR	747	14	761			9	422	234	96
CROWLEY COUNTY CORR FAC	552	1	553		1	16	286	160	90
KIT CARSON COUNTY CORR FAC	554	6	560			2	324	185	49
COMMUNITY/ISP	1,355	74	1,429			5	67	59	1,298
TOTAL MALE POPULATION	16,350	253	16,603	106	953	2,683	4,100	4,245	4,516
PERCENT OF TOTAL				0.6%	5.7%	16.2%	24.7%	25.6%	27.2%
FEMALE POPULATION									
COLO WOMEN'S CORR FAC	215	2	217			70	76	51	20
DENVER WOMEN'S CORR FAC	699	9	708	12	28	72	123	334	139
PUEBLO MINIMUM CTR	252	1	253				2	163	88
ADULT FEMALES AT Y.O.S.	0	0	0						
COLO CORR ALT PROGRAM	9	0	9					1	8
SAN CARLOS CORR FAC	0	0	0						
DENVER REC DIAG CTR INF	1	0	1				1		
COLO TERR CORR FAC INF.	0	0	0						
COMMUNITY/ISP	291	11	302			2	15	17	268
TOTAL FEMALE POPULATION	1,467	23	1,490	12	28	144	217	566	523
PERCENT OF TOTAL				0.8%	1.9%	9.7%	14.6%	38.0%	35.1%

* Final custody designations for jail backlog and contracts, fugitive, community regressions, and parole revocations are not reported.

COLORADO DEPARTMENT OF CORRECTIONS
ADULT INMATE JURISDICTIONAL POPULATION (1)

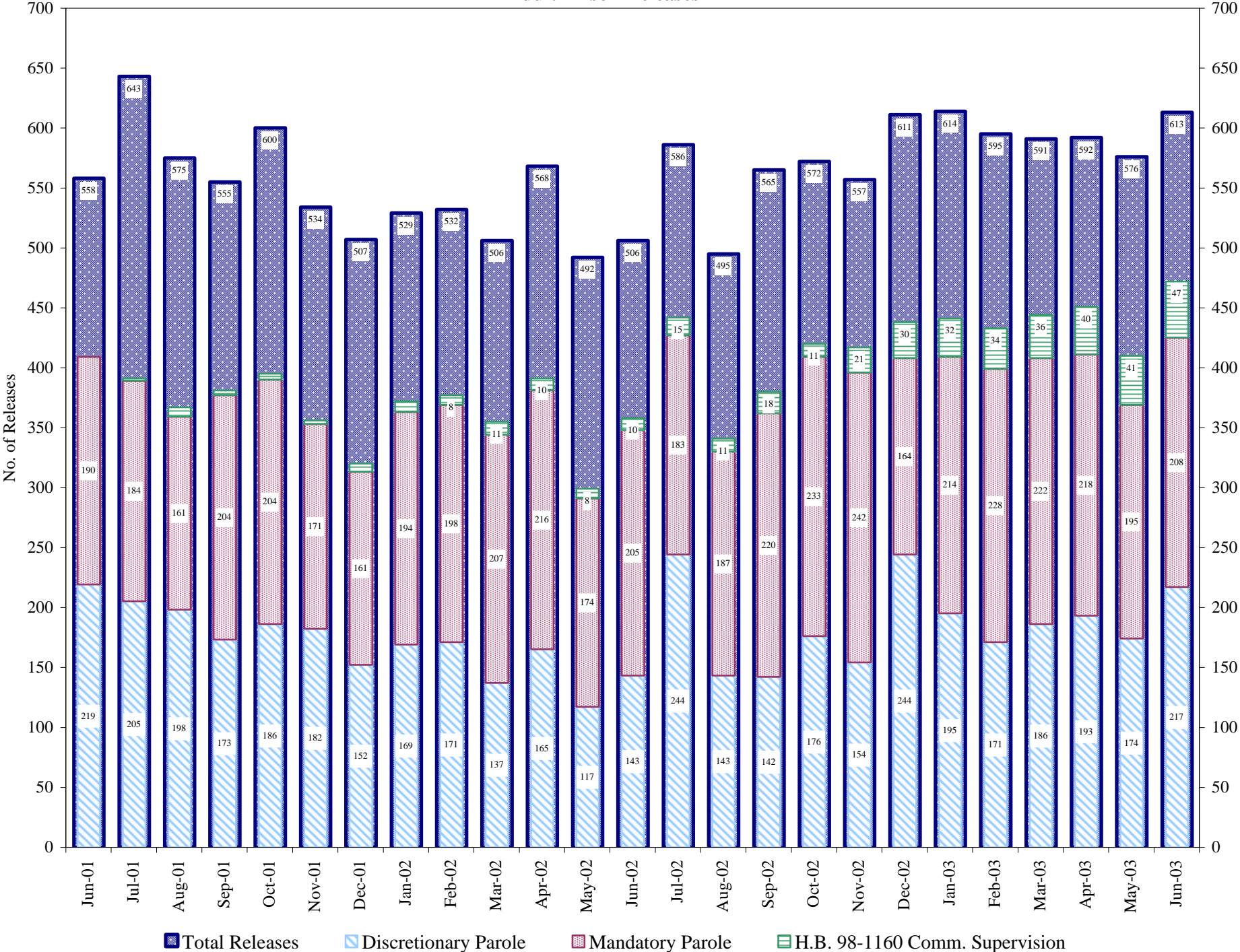
DATE: 7/10/2003

DATE	MALE JURISDICTIONAL POPULATION	FEMALE JURISDICTIONAL POPULATION	TOTAL INMATE JURISDICTIONAL POPULATION	NET CHANGE	FISCAL Y-T-D AVG
06-30-03	17,226	1,620	18,846	69	67
05-31-03	17,162	1,615	18,777	81	
04-30-03	17,088	1,608	18,696	52	
03-31-03	17,047	1,597	18,644	55	
02-28-03	17,006	1,583	18,589	16	
01-31-03	16,997	1,576	18,573	22	
12-31-02	16,969	1,582	18,551	31	
11-30-02	16,945	1,575	18,520	58	
10-31-02	16,896	1,566	18,462	80	
09-30-02	16,834	1,548	18,382	44	
08-31-02	16,790	1,548	18,338	222	
07-31-02	16,589	1,527	18,116	71	
06-30-02	16,539	1,506	18,045	162	
05-31-02	16,396	1,487	17,883	201	
04-30-02	16,221	1,461	17,682	164	
03-31-02	16,068	1,450	17,518	132	
02-28-02	15,953	1,433	17,386	92	
01-31-02	15,887	1,407	17,294	144	
12-31-01	15,765	1,385	17,150	121	101
11-30-01	15,656	1,373	17,029	85	
10-31-01	15,572	1,372	16,944	41	
09-30-01	15,549	1,354	16,903	37	
08-31-01	15,518	1,348	16,866	102	
07-31-01	15,431	1,333	16,764	-69	
06-30-01	15,493	1,340	16,833	15	
05-31-01	15,471	1,347	16,818	28	
04-30-01	15,440	1,350	16,790	48	
03-31-01	15,403	1,339	16,742	118	
02-28-01	15,304	1,320	16,624	25	
01-31-01	15,267	1,332	16,599	60	
12-31-00	15,204	1,335	16,539	69	70
11-30-00	15,148	1,322	16,470	59	
10-31-00	15,120	1,291	16,411	162	
09-30-00	14,968	1,281	16,249	54	
08-31-00	14,911	1,284	16,195	107	
07-31-00	14,815	1,273	16,088	89	
06-30-00	14,733	1,266	15,999		106
06-30-99	13,547	1,179	14,726		89
06-30-98	12,647	1,016	13,663		89
06-30-97	11,681	909	12,590		84
06-30-96	10,808	769	11,577		76
06-30-95	10,000	669	10,669		55
06-30-94	9,382	623	10,005		64
06-30-93	8,712	530	9,242		39
06-30-92	8,269	505	8,774		61
06-30-91	7,598	445	8,043		31
06-30-90	7,215	451	7,666		58
06-30-89	6,579	392	6,971		

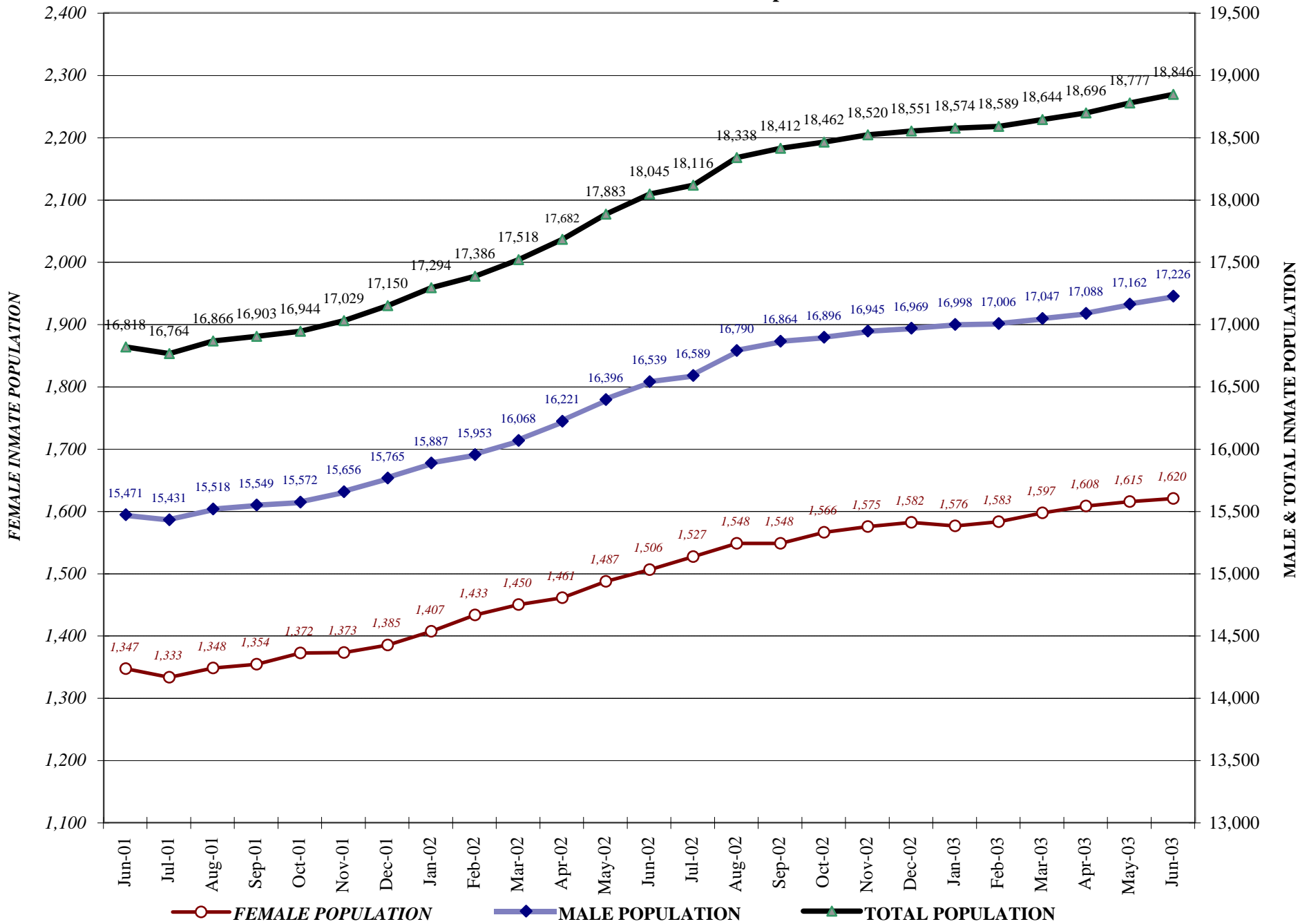
(1) Adult inmate jurisdictional population includes on-grounds, off-grounds, out-of-state, escapees, and jail backlog and excludes offenders sentenced to the Youthful Offender System (Y.O.S.).

COLORADO DEPARTMENT OF CORRECTIONS

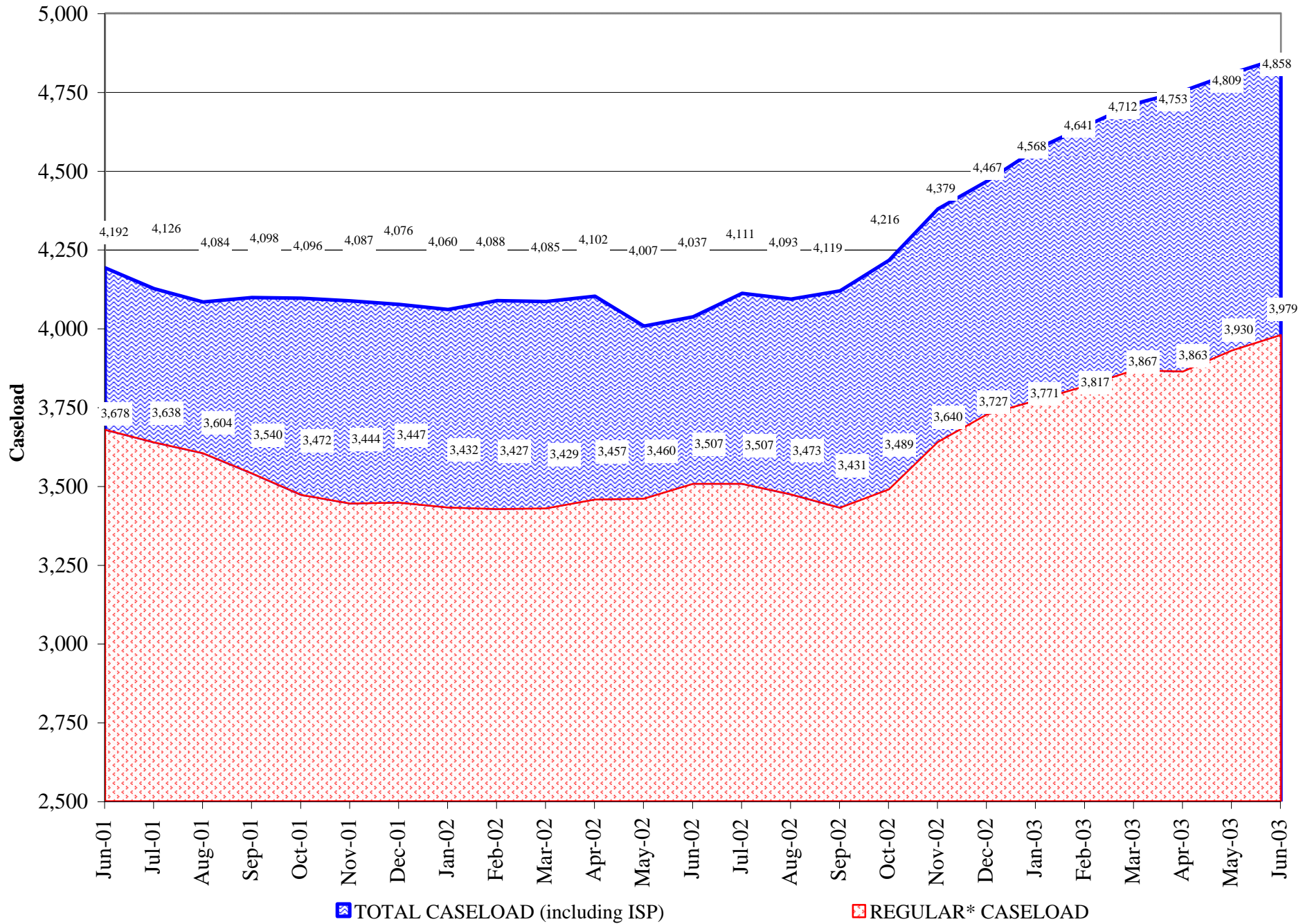
Adult Prison Releases



COLORADO DEPARTMENT OF CORRECTIONS Adult Jurisdiction Inmate Population



COLORADO DEPARTMENT OF CORRECTIONS Parole Population



*Regular caseload includes interstate parole, but excludes out-of-state parolees and absconders.