

COLORADO DEPARTMENT OF CORRECTIONS
MONTHLY POPULATION AND CAPACITY REPORT
AS OF DECEMBER 31, 2002

31-Jan-03

	11/30/02 OPERATIONAL CAPACITY*	CAPACITY CHANGES	------ 12/31/02 ----- OPERATIONAL CAPACITY*	ON-GRDS POPULATION	------ 12/31/01 ----- OPERATIONAL CAPACITY*	ON-GRDS POPULATION
COLO STATE PENITENTIARY	756		756	732	756	742
CENTENNIAL CORR FAC	336		336	334	336	336
STERLING CORR FAC	2,445		2,445	2,417	2,445	2,419
LIMON CORR FAC	953		953	950	953	944
ARK VALLEY CORR FAC	1,007		1,007	1,006	1,007	996
BUENA VISTA CORR FAC	826		826	825	826	811
BUENA VISTA MIN CTR	292		292	286	292	288
COLO TERR CORR FAC	770		770	789	695	737
FORT LYON CORR FAC	500		500	480	0	0
FREMONT CORR FAC	1,449	22	1,471	1,451	1,449	1,382
ARROWHEAD CORR CTR	494		494	491	484	480
FOUR MILE CORR CTR	499		499	495	484	478
PRE-RELEASE CORR CTR	0		0	0	0	0
PUEBLO MINIMUM CTR	256		256	250	256	227
TRINIDAD CORR FAC	484		484	476	96	6
ADULT MALES AT Y.O.S.	0		0	0	120	113
SKYLINE CORR CTR	249		249	249	249	248
COLORADO CORR CTR	150		150	150	150	146
DELTA CORR CTR	484		484	478	484	479
RIFLE CORR CTR	192		192	192	192	190
COLO CORR ALT PROGRAM	100		100	89	100	90
COLO WOMEN'S CORR FAC	224		224	221	224	218
DENVER WOMEN'S CORR FAC	707		707	697	594	525
ADULT FEMALES AT Y.O.S.	0		0	0	0	0
DENVER REC DIAG CTR	480		480	496	480	493
SAN CARLOS CORR FAC	250		250	242	250	241
SUBTOTAL	13,903	22	13,925	13,796	12,922	12,589
CONTRACTS:						
BENT COUNTY CORR CTR	724		724	592	700	600
HUERFANO COUNTY CORR CTR	778		778	629	752	645
CROWLEY COUNTY CORR FAC	1,185		1,185	638	500	613
KIT CARSON COUNTY CORR FAC	820		820	593	500	532
OFF-GROUNDS POPULATION:						
ESCAPEES				182		182
REVOCATIONS-JAIL				180		170
REVOCATIONS-JAIL				11		9
JAIL BACKLOG:						
BACKLOG LESS THAN 72 HOURS			56		0	
BACKLOG GREATER THAN 72 HOURS (FISCAL YTD AVE = 160)			65		77	
BACKLOG-PAROLEES AWAITING TRANSFER			43		38	
TOTAL JAIL BACKLOG				164		115
COUNTY JAIL CONTRACTS				39		53
COMMUNITY CORRECTIONS						
COMMUNITY						
RESIDENTIAL	927	0	927	927	927	927
PAROLE REVOCATIONS	4	-1	3	3	3	3
NON-RESIDENTIAL	46	2	48	48	65	65
REGRESSIONS	16	9	25	25	31	31
TOTAL COMMUNITY	993	10	1,003	1,003	1,026	1,026
ISP						
RESIDENTIAL	683	-15	668	668	559	559
NON-RESIDENTIAL	42	-3	39	39	51	51
REGRESSIONS	5	12	17	17	6	6
TOTAL ISP	730	-6	724	724	616	616
TOTAL COMM. CORRECTIONS	1,723	4	1,727	1,727	1,642	1,642
MALE POPULATION			16,969		15,765	
FEMALE POPULATION			1,582		1,385	
TOTAL INMATE JURISDICTIONAL POPULATION				18,551		17,150

*OPERATIONAL CAPACITY INCLUDES ALL BEDS AVAILABLE FOR USE, INCLUDING MANAGEMENT CONTROL UNITS BUT EXCLUDES EMERGENCY DOUBLE BUNKING.

COLORADO DEPARTMENT OF CORRECTIONS
MONTHLY POPULATION AND CAPACITY REPORT
AS OF DECEMBER 31, 2002

31-Jan-03

CURRENT MONTH CHANGES IN CAPACITY:

Dec-02	FREMONT CORR FAC	INCREASE DOUBLE BUNKING	22
--------	------------------	-------------------------	----

NET MONTHLY GROWTH RATE:

CURRENT MONTH	31
FISCAL YEAR-TO-DATE AVERAGE	84

YOUTHFUL OFFENDER SYSTEM

	----- 12/31/02 -----				12/31/01
	DRDC	PUEBLO	CONTRACT FACILITIES	COMM. CORR.	TOTAL POPULATION
INTAKE/IDO	0	5			5
RFP/REMEDICATION	0	35			35
PHASE I	0	155	0		155
PHASE II	0	14			14
PHASE III		0		42	42
OFF GROUNDS/BACKLOG					4
TOTAL Y.O.S. POPULATION	0	209	0	42	255

	CURRENT MONTH	FISCAL YR. TO DATE
YOS ADMISSIONS	2	30
YOS RELEASES:		
COMPLETION OF SENTENCE	8	25
JUDICIAL RELEASE TO PROB/CT ORD DISCHG	1	1
JUDICIAL TRANSFER TO DOC	0	0
TERMINATION/FAILURE	0	4
DECEASED	0	0
TOTAL RELEASES	9	30

PAROLE CASELOAD

	----- 12/31/02 -----			----- 11/30/02 -----		----- 12/31/01 -----	
	DOMESTIC	INTERST PAR/PROB	TOTAL CASELOAD	DOMESTIC	TOTAL CASELOAD	DOMESTIC	TOTAL CASELOAD
DENVER REGION							
REGULAR	1,378	104	1,482	1,342	1,442	1,213	1,302
ISP	320		320	310	310	283	283
SUBTOTAL	1,698	104	1,802	1,652	1,752	1,496	1,585
NORTHEAST REGION							
REGULAR	1,033	90	1,123	1,008	1,100	978	1,100
ISP	153		153	167	167	152	152
SUBTOTAL	1,186	90	1,276	1,175	1,267	1,130	1,252
SOUTHEAST REGION							
REGULAR	667	47	714	660	708	637	688
ISP	189		189	179	179	151	151
SUBTOTAL	856	47	903	839	887	788	839
WESTERN REGION							
REGULAR	360	48	408	342	390	311	357
ISP	78		78	83	83	43	43
SUBTOTAL	438	48	486	425	473	354	400
TOTAL CASELOAD							
REGULAR	3,438	289	3,727	3,352	3,640	3,139	3,447
ISP	740		740	739	739	629	629
TOTAL	4,178	289	4,467	4,091	4,379	3,768	4,076
ADDITIONAL CASELOAD:							
OUT-OF-STATE PAROLEES			1,286		1,292		1,283
PAROLEE ABSCONDERS			462		418		374

COLORADO DEPARTMENT OF CORRECTIONS
MONTHLY POPULATION AND CAPACITY REPORT
AS OF DECEMBER 31, 2002

31-Jan-03

	12/31/2002 POPULATION			----- FINAL CUSTODY DESIGNATION* -----						
	On-Grds.	Off-Grds	TOTAL	Uncls.	Ad.Seg	Close	Medium	Min.-Res.	Minimum	
MALE POPULATION										
COLO STATE PENITENTIARY	732	5	737			700	28	2	5	2
CENTENNIAL CORR FAC	334	4	338			6	313	14	2	3
STERLING CORR FAC	2,417	31	2,448			195	460	703	656	434
LIMON CORR FAC	950	8	958			3	572	270	89	24
ARK VALLEY CORR FAC	1,006	11	1,017				356	330	215	116
BUENA VISTA CORR FAC	825	11	836			4	215	335	151	131
BUENA VISTA MIN CTR	286	4	290					4	247	39
COLO TERR CORR FAC	788	5	793				194	258	223	118
FORT LYON CORR FAC	480	3	483				1	132	245	105
FREMONT CORR FAC	1,451	11	1,462			9	279	435	432	307
ARROWHEAD CORR CTR	491	3	494					1	326	167
FOUR MILE CORR CTR	495	5	500					4	401	95
PRE-RELEASE CORR CTR	0	0	0							
TRINIDAD CORR FAC	476	3	479					5	379	95
ADULT MALES AT Y.O.S.	0	0	0							
SKYLINE CORR CTR	249	1	250					1	1	248
COLORADO CORR CTR	150	1	151						2	149
DELTA CORR CTR	478	0	478						3	475
RIFLE CORR CTR	192	1	193						1	192
COLO CORR ALT PROGRAM	85	5	90				1	1	3	85
DENVER REC DIAG CTR	493	14	507	228	6	32	79	97	97	65
SAN CARLOS CORR FAC	242	7	249	1	27	94	50	39	39	38
CONTRACTS:										
BENT COUNTY CORR CTR	592	6	598		1	6	313	198	198	80
HUERFANO COUNTY CORR CTR	629	16	645			2	383	193	193	67
CROWLEY COUNTY CORR FAC	638	4	642		3	6	355	184	184	94
KIT CARSON COUNTY CORR FAC	593	5	598		2	4	376	169	169	47
COMMUNITY/ISP	1,287	73	1,360			2	20	19	19	1,319
TOTAL MALE POPULATION	16,359	237	16,596	229	956	2,565	4,071	4,280	4,280	4,495
PERCENT OF TOTAL				1.4%	5.8%	15.5%	24.5%	25.8%	25.8%	27.1%
FEMALE POPULATION										
COLO WOMEN'S CORR FAC	221	1	222				68	90	47	17
DENVER WOMEN'S CORR FAC	697	6	703	14	24	89	107	324	324	145
PUEBLO MINIMUM CTR	250	1	251				2	150	150	99
ADULT FEMALES AT Y.O.S.	0	0	0							
COLO CORR ALT PROGRAM	4	3	7						1	6
SAN CARLOS CORR FAC	0	0	0							
DENVER REC DIAG CTR INF	3	1	4					3	1	
COLO TERR CORR FAC INF.	1	0	1				1			
COMMUNITY/ISP	308	14	322				1	3	14	304
TOTAL FEMALE POPULATION	1,484	26	1,510	14	24	159	205	537	537	571
PERCENT OF TOTAL				0.9%	1.6%	10.5%	13.6%	35.6%	35.6%	37.8%

*Final custody designations for jail backlog and contracts, fugitive, community regressions, and parole revocations are not reported.

COLORADO DEPARTMENT OF CORRECTIONS
ADULT INMATE JURISDICTIONAL POPULATION (1)

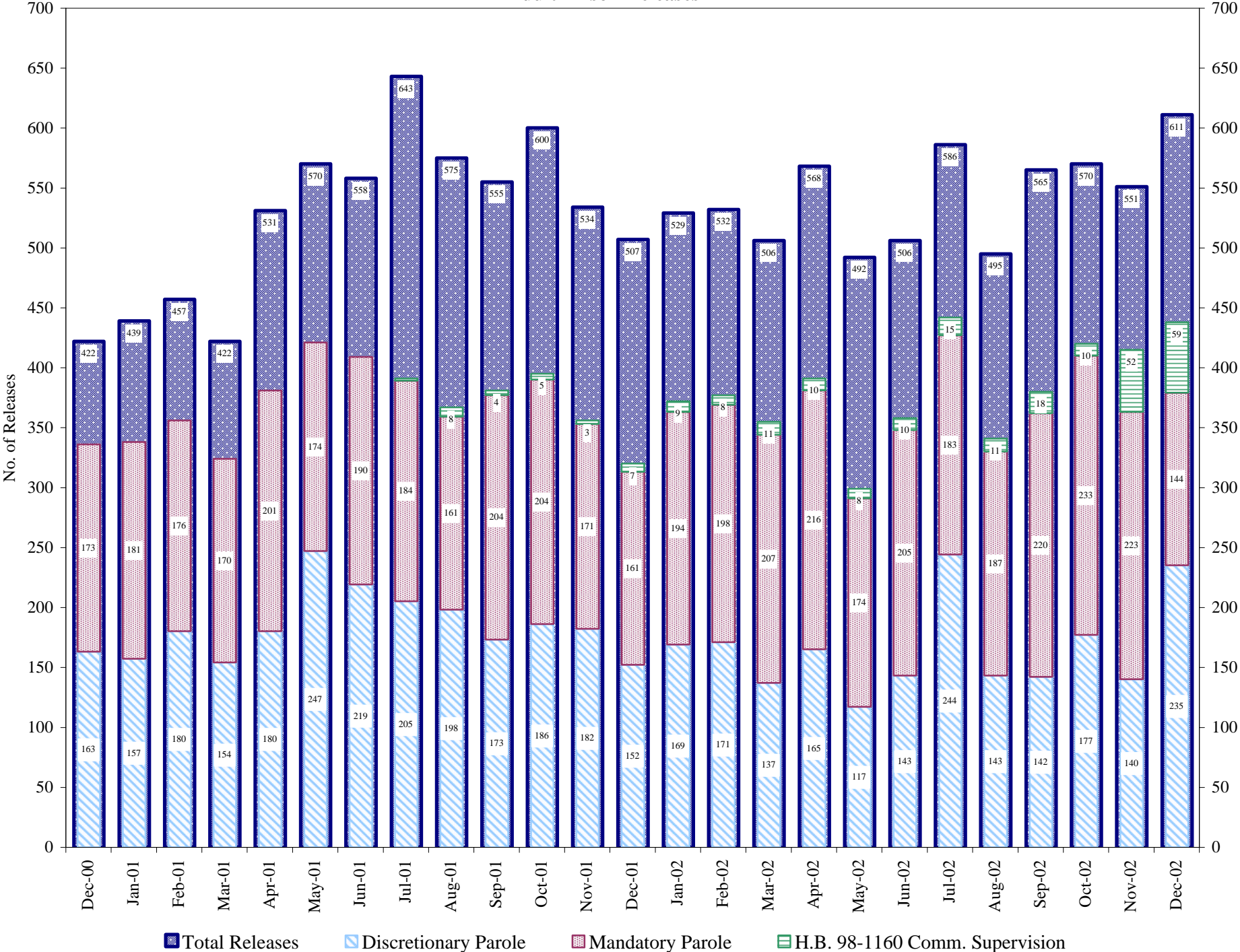
DATE: 1/31/2003

DATE	MALE JURISDICTIONAL POPULATION	FEMALE JURISDICTIONAL POPULATION	TOTAL INMATE JURISDICTIONAL POPULATION	NET CHANGE	FISCAL Y-T-D AVG
12-31-02	16,969	1,582	18,551	31	84
11-30-02	16,945	1,575	18,520	58	
10-31-02	16,896	1,566	18,462	80	
09-30-02	16,834	1,548	18,382	44	
08-31-02	16,790	1,548	18,338	222	
07-31-02	16,589	1,527	18,116	71	
06-30-02	16,539	1,506	18,045	162	
05-31-02	16,396	1,487	17,883	201	
04-30-02	16,221	1,461	17,682	164	
03-31-02	16,068	1,450	17,518	132	
02-28-02	15,953	1,433	17,386	92	
01-31-02	15,887	1,407	17,294	144	
12-31-01	15,765	1,385	17,150	121	101
11-30-01	15,656	1,373	17,029	85	
10-31-01	15,572	1,372	16,944	41	
09-30-01	15,549	1,354	16,903	37	
08-31-01	15,518	1,348	16,866	102	
07-31-01	15,431	1,333	16,764	-69	
06-30-01	15,493	1,340	16,833	15	
05-31-01	15,471	1,347	16,818	28	
04-30-01	15,440	1,350	16,790	48	
03-31-01	15,403	1,339	16,742	118	
02-28-01	15,304	1,320	16,624	25	
01-31-01	15,267	1,332	16,599	60	
12-31-00	15,204	1,335	16,539	69	70
11-30-00	15,148	1,322	16,470	59	
10-31-00	15,120	1,291	16,411	162	
09-30-00	14,968	1,281	16,249	54	
08-31-00	14,911	1,284	16,195	107	
07-31-00	14,815	1,273	16,088	89	
06-30-00	14,733	1,266	15,999		106
06-30-99	13,547	1,179	14,726		89
06-30-98	12,647	1,016	13,663		89
06-30-97	11,681	909	12,590		84
06-30-96	10,808	769	11,577		76
06-30-95	10,000	669	10,669		55
06-30-94	9,382	623	10,005		64
06-30-93	8,712	530	9,242		39
06-30-92	8,269	505	8,774		61
06-30-91	7,598	445	8,043		31
06-30-90	7,215	451	7,666		58
06-30-89	6,579	392	6,971		

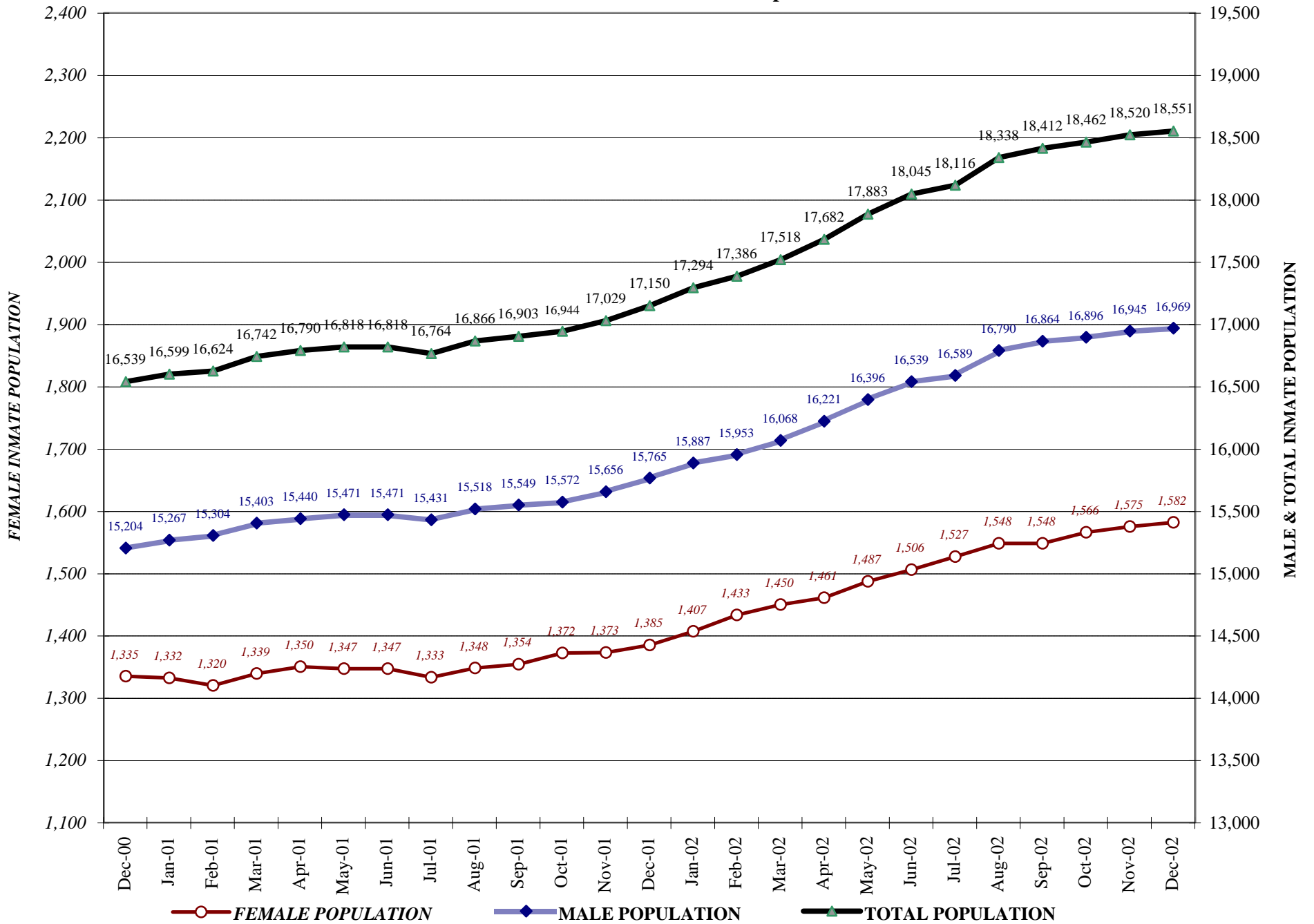
(1) Adult inmate jurisdictional population includes on-grounds, off-grounds, out-of-state, escapees, and jail backlog and excludes offenders sentenced to the Youthful Offender System (Y.O.S.).

COLORADO DEPARTMENT OF CORRECTIONS

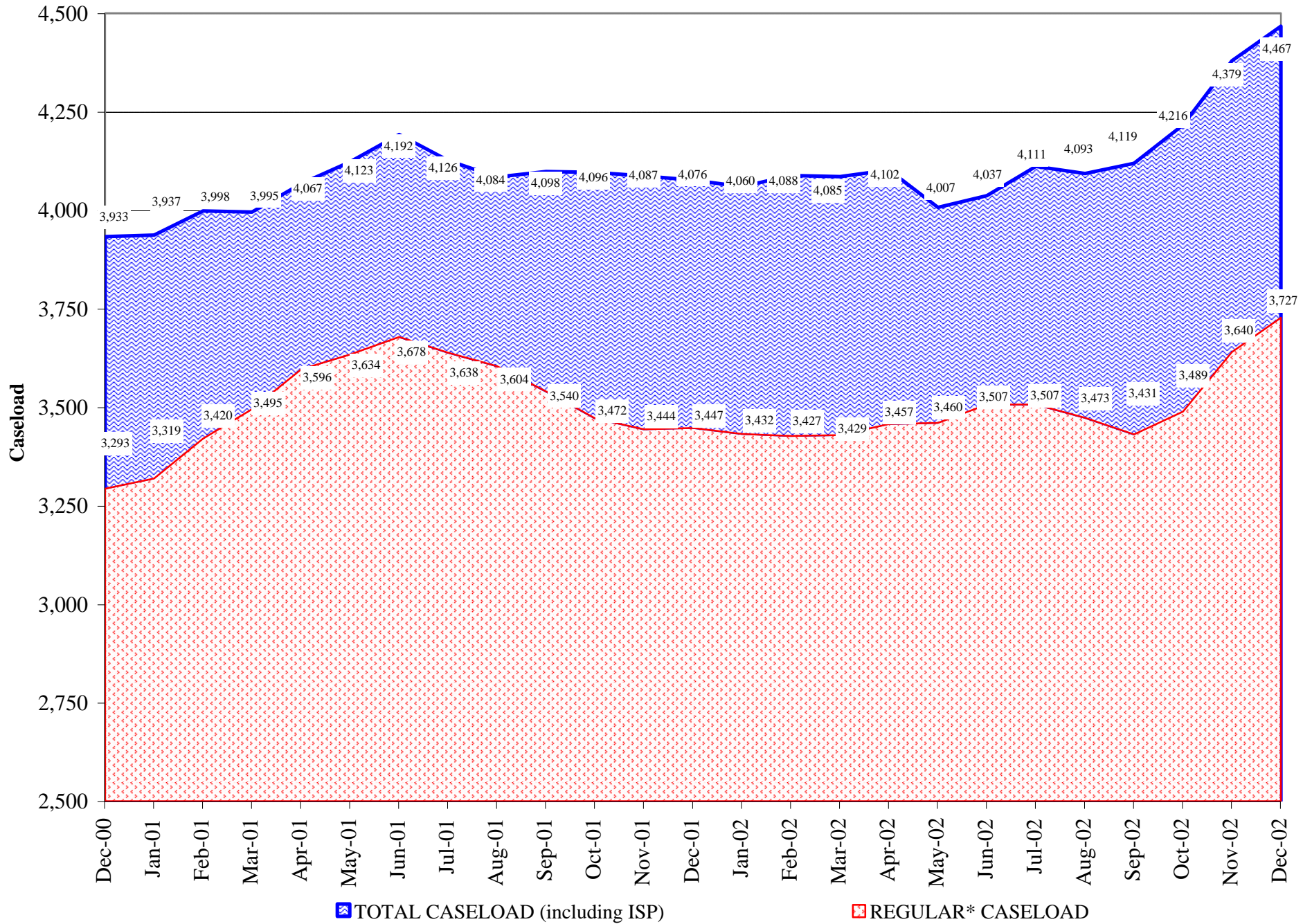
Adult Prison Releases



COLORADO DEPARTMENT OF CORRECTIONS Adult Jurisdiction Inmate Population



COLORADO DEPARTMENT OF CORRECTIONS Parole Population



*Regular caseload includes interstate parole, but excludes out-of-state parolees and absconders.