

Arapahoe Community College was established in 1965 as a local community junior college, the first in the Denver metropolitan area. Local residents wanted the College, worked for it, established it, and have continually supported it.

Located fifteen miles from downtown Denver, the main campus is located in Littleton on 51-acres provided by an urban renewal project. Many persons gave up their homes and businesses in order to provide for the campus site.

In 1970, the College received full accreditation from the North Central Association of Colleges and Secondary School and changed the name to Arapahoe Community College (ACC).

The College has grown from a first-year enrollment of 583 to more than 21,675 now enrolled in credit and non-credit courses. ACC currently offers over 90 degree and certificate programs to meet community needs. With the addition of the Art and Design Center, home to ACC's art, fine art, and design and technology programs, the College continues to grow. Courses are also offered at extended sites in the Denver Tech Center at the Triad location, and in Parker at the University Center at Chaparral.

The Arapahoe Community College service area encompasses Douglas County and parts of Arapahoe, Denver, and Jefferson counties. ACC serves eleven cities, six school districts and 39 high schools. ACC is active in ten local Chambers of Commerce among other local organizations.

The College looks forward to many more decades of exceptional service to the community it serves.

**Arapahoe Community College
Institutional Effectiveness and Environmental Scan
July, 2004**

**Prepared by the Office of Enrollment Management
and Institutional Research
Lin Claussen, Suzanne Larsh, Margaret Puryear**

Table of Contents

	<u>Page</u>
Executive Summary and Highlights	1- 3
Institutional Effectiveness Matrix and Plan 04-05	4-10
Quality Indicator System (QIS) Report	11-24
ACC Report Card (a trend report)	25-30
Average Age, Market Penetration Rate, Enrollment Trends, Annualized FTE, Annual Credits, Applicant Yield Rate, Retention Rates, Degrees Awarded, Vocational Graduate placement rates, Probation & Suspension rates, High School Co enrolls, High School conversion rates, Financial Aid awards, % non-traditional times, Satisfaction with Instruction, Cohort Trends	
Detailed Reports and Analyses	
ACC General Demographics	32
Applicant Yield Rate	33
Credit Hours by Course Prefix	49-51
Degrees Granted by Program	34-37
FTE by site and mode-of-delivery	39
Graduate Employment Status survey and Employer survey results (VE135)	46-48
Headcount, Unduplicated	41
High School Conversion Rates	42
Market Penetration by Zipcode	43
Student Satisfaction Survey Highlights	44-45
Transfer, Where do our students transfer to?	38
What times do courses at ACC start?	40
Environmental Scan	
Colorado Profile by AACC	53-54
CCHE Final Annualized FTE for all Colorado State Colleges	55-60
Demographic Information	
Population by Race	61
Age/Sex/Income	62
Educational Attainment	63
Occupational Projections 2000-2010	
Top Jobs Requiring an Associate's Degree	64
Denver Metro Occupational Employment Statistics Wage Data	65
Resources	67

Executive Summary and Highlights

The purpose of this document is to provide data, trends, and informative reports that support fact-based strategic decision-making. The following summary is a listing of "highlights" that have been gleaned from the body of this document by the Office of Institutional Research. Users of this document should not limit themselves to relying solely on the below listing for useful information about the College and its environment, but rather, should review the detailed data to draw their own conclusions.

Beside each bulleted highlight is a reference to the detailed report. Each source/report is included in this document and listed alphabetically in the Table of Contents.

The Institutional Effectiveness (IE) Plan based on the 02-03 and 03-04 IE reports plus the Fall 2003 Student Satisfaction Survey is also included in this report. The outcomes of the IE initiatives will be reported in future IE reports.

If you have any comments or suggestions concerning this document, feedback is always welcome.

Respectfully submitted,
Lin Claussen, Director
Enrollment Mgmt & Institutional Research

- ⊙ The Institutional Effectiveness (IE) initiatives listed in the IE matrix and plan found on pages 4-10 are well under way.
- ⊙ ACC holds up relatively well in meeting the state Quality Indicators (QIS) when compared with fellow community colleges. ACC meets 53.8% of the QIS benchmarks compared to a system average of 42% (pages 11-24).
- ⊙ ACC continues to see a shift in the full-time to part-time enrollment ratio. Forty-one (41%) of our students are enrolled full-time compared to 31% just 3 years prior. (page 26)
- ⊙ Unduplicated annual headcount continues to rise breaking last year's highest headcount record. (pages 26 and 41)
- ⊙ Although ACC hit its highest FTE with a 3.5% increase in 03-04, it did not reach the 6.1% system average. (pages 27 and 55-60)
- ⊙ Non-countable credits (cash funded) declined by 3576 credits or 8% in 03-04. (page 27)

- ⊙ Applicant Yield Rate continues its decline to 53% compared to a 65% yield rate 5 years prior. (page 27 and 33)
- ⊙ ACC realized a much needed increase in Fall to Spring retention rates in 03-04 to 64% up from 56% just 3 years prior. (page 27) The anticipated impact is to see increased fall-to-fall retention rates in the QIS.
- ⊙ ACC had quite a leap (53%) in number of students placed on academic suspension. (page 28)
- ⊙ As projected last year in the IE plan, ACC has increased its high school co-enroll population for 03-04 by 10%. (page 28)
- ⊙ Financial Aid realized a 7.5% increase in the number of financial aid applicants and a 14.5% increase in the amount of financial aid awarded for 03-04. (page 28)
- ⊙ ACC continues to struggle with meeting QIS benchmarks in the latest QIS report for graduation and retention rates (note: latest QIS report reflects rates for the 1999 and 2001 cohorts). (pages 29-30)
- ⊙ ACC realized a slight shift in the female to male population proportions with females making up 64% of the student population compared to 61% the previous year. (page 32)
- ⊙ The number of degrees and certificates awarded in 03-04 is up 5% over the previous year. (pages 34-37)
- ⊙ ACC students transfer primarily to Metro and UCD followed by CSU, UCB, and UNC respectively. (page 38)
- ⊙ For 03-04, hybrid FTE increased 84% and online FTE increased 37%. Hybrid and online FTE makes up 20% of ACC's overall FTE. (page 39)
- ⊙ The ACC main campus saw a 6% FTE growth in 03-04. UCC realized an 8% growth and the Colorado Computer Center grew 302%. Triad FTE declined 15%. (page 39)
- ⊙ ACC holds most classes on Monday, Tuesday, Wednesday, and/or Thursday with the highest volume time slots being:

TR	10:00am	
MW	1:00pm	(page 40)

- ⊙ ACC's service area high school conversion rate remains constant. (page 42)
- ⊙ ACC had a slight decline in service area penetration rate in 03-04 for both credit and non-credit enrollments. (page 43)
- ⊙ The Student Satisfaction Survey reveals points of information to celebrate and issues to address. (pages 44-45)
- ⊙ The 2004 data relating to student employment rates are generally less favorable than the 2003 data. (page 46-47)
- ⊙ Data for the Employer Responses on graduates seems to fluctuate from year to year. (page 48)
- ⊙ Colorado is ranked 36th in per capita state and local appropriations for community colleges 1999-2000. (page 53)
- ⊙ Top jobs requiring and Associates Degree: Computer Support Specialists and Registered Nurses. (page 64)

Arapahoe Community College

Institutional Effectiveness Matrix 04-05

Institutional Effectiveness Initiatives are based on the results of the Institutional Effectiveness Report (IER) and Student Satisfaction Survey (SSS)

Priority	Initiative	Related Strategic Goal	Related Compact Plan Goal	Team Members	Date to be in place	Assessment
1	Class Scheduling: increase convenience of course offerings for students. Consider Gen Ed cohort on weekends.	#1, #2	#5	VPI, Matt Jamison		Increased satisfaction on the Fall 2005 SSS
2	Online Course Delivery: Increase in-semester persistence rates to match traditional-delivery rates; and, increase overall student satisfaction with instruction. An ongoing project that continues to require support but has already made progress with online standards, faculty training and enhance delivery platform.	#2, #3	#5	Lin Claussen		Increased in-semester persistence rates on the Fall 2005 IER and increased overall student satisfaction with instruction on the Fall 2005 SSS.
3	Retention: increase fall-to-fall retention rates to 55%	#2	#1, #5	Lin Claussen, Kim Ostrowski, Matt Jamison, Jan McLees, Karin Blaske, Linda Heesch		Reach 55% retention rate for Fall 05 to Fall 06
3	Graduation Rates: meet the 21% graduation rate benchmark. Consider transfer core certificate, capturing students who meet requirements but do not apply, more intrusive measures to insure declared majors, degree progress reports.	#2	#5	Lin Claussen, Matt Jamison, Deans		Meets the 21% rate
	Applicant Yield Rate: increase yield rate to 65%. Consider surveying students.	#2	#5	Institutional Research		Meets the 65% rate
	Parking: consider spreading class scheduling into afternoons and weekends to diminish peak period volume. Change perception of parking by stating in several places what students should expect for parking and including in college orientations.	#1, #2	#2, #5	VPI, Cheryl Traff, Deb Wilke		Increase satisfaction with parking on the Fall 2005 SSS.

Priority	Initiative	Related Strategic Goal	Related Compact Plan Goal	Team Members	Date to be in place	Assessment
	Minority students and Males: increase publicity of services, support groups and events. Provide diversity training and gender differences training.	#2	#5	Diversity Committee		Increased retention and graduation rates on the 2005 IER and increased awareness of support and increased satisfaction by male population on Fall 2005 SSS.
	Customer Service: consider customer service training through CELT and incorporate customer service assm in each area. President has agreed to send out letter to campus supporting customer service assessment.	#2	#5	Lin, Suzanne, VP's		Increased customer service satisfaction on Fall 2005 SSS.
	Financial Aid: increase student satisfaction with Financial Aid service.	#2	#5	Cheryl Traff, Dir.of Fin. Aid		Increase satisfaction with service on 2005 SSS.
	Advising, Tutorial Services and Career Services: increase visibility and improved customer service.	#2	#5	Kim Ostrowski, Linda Heesch, Jan McLees		Increase satisfaction and knowledge of services on 2005 SSS.
	Satisfaction with Instruction, Faculty/Student Interaction: Consider a more specific, tailored course/faculty evaluation to allow comparison of satisfaction across delivery modes and to examine faculty/student interaction.	#2	#5	Deans, Suzanne		Increase satisfaction on 2005 SSS.

Proposed Institutional Effectiveness Plan 03-04 & 04-05
Based on Institutional Effectiveness (IE) Report of 02-03, 03-04 and
Student Satisfaction Survey (SSS) of Fall 2003
Office of Institutional Research

1. Online Course Delivery: based on Attrition/Retention reports of 02-03 and the Graduate Survey, online instruction is not faring as well as "traditional" delivery courses. Online courses experienced a 76% in-semester persistence rate compared to 81.5% for traditional-delivery courses. Student satisfaction with instruction fell by 10% (from 99% to 89% satisfaction) for Fall 03-04 compared to the previous year. After running correlation checks it was concluded that the lower satisfaction was substantially linked to online instruction. (ref: IE report)

- Goal:** a) Increase in-semester persistence rates to match traditional-delivery rates; and,
b) Increase overall student satisfaction with instruction.

Compact Plan #5; College Goal #2, #3

Action Plan:

- a) The Online Standards Committee is already in action with the creation of Online Standards and the peer review of online courses.

Taskforce: the Online Standards Committee

Assessment: in-semester persistence rates in Fall 04-05 and satisfaction with instruction rate in Fall 04-05.

- b) Create a mandatory instructor training process for instructors, both new and continuing, to online teaching prior to instructors beginning to teach online.

Taskforce: The Online Standards Committee. For Implementation Summer, 2004.

Assessment: in-semester persistence rates in Fall 04-05 and satisfaction with instruction rate in Fall 04-05.

- c) Create an online orientation to distance education for students. Once created, implement a mandated orientation process that students must complete prior to first day of class.

Taskforce: The Online Standards Committee and Blackboard support team. For Implementation Summer, 2004.

Assessment: in-semester persistence rates in Fall 04-05.

- d) Increase "up-time" of online technology and diminish technology performance problems in the form of virus', and "bugginess". Increase technical support infrastructure.

Taskforce: Online Technology Review committee reviewed

online technology and infrastructure needs and submitted a formal proposal December, 2003. In May 2004 ACC upgraded to Blackboard 6.0 hosted by Blackboard.

Assessment: in-semester persistence rates in Fall 04-05 and satisfaction expressed within Online Course evaluations. Survey of online instructors, Fall 2004.

2. Fall-to-Fall Retention Rates: ACC's fall-to-fall retention rate for both ethnic-minority and overall population did not meet CCCS benchmarks for Fall 2003 QIS. ACC rate was 47% compared to the CCCS-set benchmark of 55%. (Ref: IE report) Further, the Student Satisfaction Survey (SSS) found that students planning to obtain a degree or certificate have a significantly higher intent of completing their education at ACC. It follows that retention rates at ACC will increase as more students are advised into declared degree programs or other structured programs of study.

Retention is a multi-faceted challenge that may be impacted by any number of factors. After literature review, conferences and workshops, it was determined that the greatest positive impact to retention would be "frontloading" services. In 02-03, the Freshman Experience subcommittee was formed as an offshoot of the Enrollment Management Committee and chaired by Linda Heesch.

Goal: to increase fall-to-fall retention rates to 55% for FY05 to FY06.
Compact Plan #1, #5; College goal #2

Action Plan:

- a) Revamp the general student orientation.
- b) Place the general orientation online
- c) Place the AAA 103 and AAA109, College Strategies courses as general education electives and applicable to the AA and AGS; and, to AAS' as Dept. Chairs elect.
- d) Mandate AAA103 for students who test Doubly Deficient.
- e) Mandate AAA109 for students who are suspended and appeal. Consider future mandate for probation students.
- f) Formally expand the Jumpstart process to additional cohorts for 04-05: 21st century, international students, athletes, 1st time other.

Taskforce: Freshman Experience Committee

Assessment: Increased fall-to-fall retention rates for FY05 to FY06

Action Plan, 2nd phase:

Provide more intrusive assistance with undeclared students to determine their career goals and therefore declare an academic goal. (Ref. SSS)

- a) Place Career Services in a highly-visible physical location.

- b) Expand Career Services to focus heavily on job placement and internships.
 - c) Focus publicity on undeclared students.
 - d) Consider requiring undeclared students who have completed a pre-determined amount of credits to visit the career center.
 - e) Consider stronger incorporation of career services in AAA103.
- Taskforce: to be created
Assessment: to be solidified, but should be reflected in increased retention, increased graduation rates, and decreased # of undeclared students.

3. Graduation Rates: ACC is inconsistent in meeting the benchmarks for both the ethnic-minority graduation rates and the overall graduation rates. (ref: QIS report)

Goal: to meet the 21% graduation rate benchmark.
Compact Plan #5; College goal #2

Action Plan: ACC is only 1% away from the 21% goal. It is likely that ACC may already meet the 21% goal if all students who completed programs actually applied for graduation. To that end, conversations have already initiated between Lin Claussen and Deans to insure:

- a) certificates are created for tracks of study that lead students directly to the workforce, but are not currently represented by formal awards. Namely, Paramedic, Emergency Medical Technology, Culinary Arts, Carpentry, Nurse Aide.
- b) facilitate a process whereby students are automatically processed for a degree check when they complete identified key courses and a certificate automatically posted whether student applies for graduation or not.

Taskforce: Lin Claussen, Matt Jamison, Deans
Assessment: Meet CCCS-set graduation rates for 04-05.

4. Applicant Yield Rate: the applicant yield rate (# of applicants who subsequently enroll) has declined from 65.3% to 53% over the past 6 years. (Ref: IE Report)

Goal: increase yield rate to 65%.
Compact Plan #5; College goal #2

Action Plan: Survey students who have applied and not subsequently enrolled to determine necessary actions.

Assessment: Survey created, administered, and compiled Fall 04-05.

5. High School Co-enrolls: the co-enroll population has declined by 38% between FY01 and FY03. (Ref: IE report) After review of co-enroll practices, ACC determined that certain scholarship arrangements with high schools were imposing a negative financial impact on ACC. After a cost-benefit review, the decision was made to eliminate certain scholarship incentives which, as anticipated, caused an immediate decline in the co-enroll population.

Goal: increase co-enrollments using 02-03 as the benchmark year: unduplicated HC greater than 816 and annualized FTE greater than 168.

Compact Plan #5; College Goal #2

Action Plan: continue tracking the co-enroll trend expecting a natural increase as relationships and partnerships with high schools are formed by Howard Fukaye and Monica Flores-Mason.

Assessment: increasing unduplicated headcount of HS coenrolls until goal amount is reached.

6. Class scheduling: convenience (or lack thereof) of scheduled courses was the instructional component of highest importance with relatively lower satisfaction, and garnered the largest set of written-in comments on the Student Satisfaction Survey (SSS).

Goal: increase convenience of scheduling courses for students.

Compact Plan #5, College goal #1, #2

Action Plan:

a) Create a taskforce of key instructional members

Assessment: increased satisfaction on the Fall 2005 SSS

7. Lower level of satisfaction for the male population.

Goal: Increase satisfaction for male population.

Action Plan: Consider diversity and gender differences training through CELT and/or Diversity Committee.

Assessment: Increased satisfaction Fall 2005 Student Satisfaction Survey.

8. Parking: adequate parking is ranked second in importance for students and has a significantly low level of satisfaction. Parking seems to be less of a problem for evening and weekend students. (ref: SSS)

Goal: Either change perception by stating in several places what students should expect for parking, the peak periods for parking, and extra time that should be allowed for finding parking.

Consider spreading class scheduling out heavier into the afternoons and weekends thereby diminishing the parking volume during current "peak periods" and potentially improving the convenience of class scheduling for students.

Compact Plan #2, #5; College Goal #1, #2

9. Minority students: almost half of the minority sample knew about and didn't use services targeted for minority students, or did not know about these services. (ref: SSS)

Goal: to increase publicity of services, support groups and events available to ethnic-minority students leading to increased retention rates, increased graduation rates, and increased awareness of services.

Compact Plan #5; College Goal #2

QUALITY INDICATOR SYSTEM REPORT December 2003

**For the complete QIS report please visit the ACC website at
<http://www.arapahoe.edu/aboutacc/ir/irfacts.html>**

Introduction

This Quality Indicator System (QIS) report is the fifth since the inauguration of QIS in 1997. During 1997, the Colorado Commission on Higher Education (CCHE), in collaboration with the governing boards of the state-supported institutions of higher education, implemented HB96-1219 which the General Assembly had passed during the 1996-97 legislative session.

The specific quality indicators involved in QIS are similar to those used in the variety of quality indicator systems found in other states: graduation rates, freshmen retention and persistence rates, passing scores or rates on tests and licensure examinations, undergraduate class size, faculty teaching workload rates, and institutional support/administrative expenditures. The indicators utilized in Colorado's QIS are also used in the CCHE's performance funding system.

This report includes a description of the nine indicators used in QIS, the institutional data for each, as well as the benchmarks for measuring institutional performance, where applicable.

Purposes of QIS

Purpose 1: Encouraging Continuous Improvement by Institutions in Achieving High Levels of Performance

Purpose 2: Measuring Institutional Performance and Accountability

Purpose 3: Determining Funding Recommendations and the Funding Distribution for the Higher Education System

Purpose 4: Build Public Support for Increased Funding for Higher Education

QUALITY INDICATORS FOR 2003-04 Two-year Institutions

Indicator 1B: Three-Year Graduation Rates (two-year institutions)

This indicator measures the three-year graduation rate for first-time, full-time, certificate or associate degree-seeking freshmen and either graduated from the original institution or another two-year institution in Colorado's state-supported institution of higher education within three years after entry. Individual institution benchmark values are based on recent performance with the expectation for improvement from the past year's performance level.

Indicator 2B: Freshmen Retention and Persistence Rates

These indicators mirror similar indicators used by other states which measure the percentage of first-time, full-time, certificate or degree-seeking freshmen entering in summer or fall 2001 who either completed a program by August 2002, were enrolled in the fall 2002 term at the same institution, or transferred to another Colorado state-supported institution of higher education and enrolled at that institution in the fall 2002 term. Benchmarks for the two-year institutions are based on recent performance with an expectation for improvement from the past year's level of performance.

Indicator 3B and 3D: Support and Success of Minority Students

These two indicators take the three-year graduation, freshmen retention, and freshmen persistence rate indicators and measure them for first-time, full-time, certificate and degree-seeking freshmen minority students. Benchmarks are calculated as above.

Factors to Keep in Mind When Interpreting Graduation, Retention, and Persistence Rates

Following nationally-recognized definitions, the entering cohorts tracked in the QIS graduation, retention, and persistence rate indicators (indicators 1A, 1B, 2A, 2B, 3A, 3B) are limited to first-time, degree-seeking freshmen who entered the institution in the summer or fall and were enrolled full-time in their first fall term. All other undergraduate students new to the institution are excluded from the entering cohorts (e.g., freshmen enrolled part-time their first term, all non-degree students, and all transfer students).

Indicator 4B: Career and Technical Graduates Employed or Continuing Their Education

A significant aspect of the role and mission of the two-year institutions is the provision of trained and skilled employees for the workforce, especially in technical areas. The benchmark is 90%, thereby taking into account students who may not become employed or continue their education for personal reasons related to family or exceptional circumstances.

Indicator 5: Institutional Support Expenditures

Each institution's operating budget is categorized in accordance with specific reporting requirements associated with the National Association of College and University Business Officers (NACUBO). One category – institutional support expenditures – most closely encompasses those expenditures considered to support the administration of the institution.

Indicator 6: Undergraduate Class Size

The inclusion of undergraduate class size by *US News and World Report* in its annual guide, *America's Best Colleges*, has brought added attention to this indicator which measures the percent of undergraduate class sections having an enrollment less than or greater than certain sizes. For the two-year institutions, the benchmarks are based on recent performance with an expectation of improvement from the past year's performance levels.

Indicator 7: Faculty Teaching Workload

The average number of hours per week devoted to organized class meetings by full-time faculty constitutes this indicator. Organized class meetings include lectures and seminars, laboratories, field instruction, studios, and on-line delivery of courses. The hours per week that are measured do not include class preparation time, grading, student advising, or individualized instruction such as independent study or supervision of dissertations, thesis, internships, cooperative education, and student teaching. National comparative data by type of institution is used for the benchmarks.

Indicators 8 and 9: Indicators Selected by the Institution

No common set of quality indicators captures the diversity and unique aspects of Colorado's twenty-eight state-supported institutions of higher education. In recognition of the diversity of Colorado's system of state-supported institutions of higher education and the individuality of each institution, two institution-specific indicators were identified by each institution which the institution felt best demonstrated its efforts to promote and enhance quality, efficiency or expediency at the undergraduate level. Like the indicators, benchmarks also were chosen by the institution.

**QIS Measure 1B: GRADUATION RATES AFTER THREE YEARS FROM
COLORADO PUBLIC TWO-YEAR HIGHER EDUCATION INSTITUTIONS
Fall 1999 Cohort**

Institution	Cohort Entering in Fall --	# Students in Entering Cohort**	Cumulative % Graduating With Cert or Assoc Degree Three Years After Entry From --			Benchmark	
			Orig Inst	Transf Inst	All CO Public Inst	Orig Inst	All CO Public Inst
Aims Comm Coll	1997	387	20.9	0.5	21.4	18.2	18.7
	1998	429	14.7	0.5	15.2		
	1999	300	27.7	0.7	28.3		
Arapahoe Comm Coll	1997	295	15.3	0.3	15.6	20.1	20.7
	1998	295	19.7	0.7	20.3		
	1999	285	21.8	0.7	22.5		
Colo Mountain Coll	1997	458	21.6	1.3	22.9	20.8	21.7
	1998	412	19.2	0.5	19.7		
	1999	383	19.3	1.0	20.4		
Colo NW Comm Coll	1997	159	23.9	1.3	25.2	27.3	30.5
	1998	127	26.8	3.1	29.9		
	1999	112	24.1	0.0	24.1		
Comm Coll of Aurora	1997	227	5.7	0.9	6.6	14.8	15.6
	1998	235	14.5	0.9	15.3		
	1999	320	37.8	0.6	38.4		
Comm Coll of Denver	1997	493	12.6	0.4	13.0	16.3	16.6
	1998	493	16.0	0.2	16.2		
	1999	494	15.4	0.4	15.8		
Front Range Comm Coll	1997	947	17.4	0.8	18.3	17.5	18.4
	1998	830	17.0	0.8	17.8		
	1999	912	15.5	1.1	16.6		
Lamar Comm Coll	1997	160	30.6	1.9	32.5	32.3	34.9
	1998	158	31.6	2.5	34.2		
	1999	113	32.7	0.9	33.6		
Morgan Comm Coll	1997	75	20.0	1.3	21.3	46.9	46.9
	1998	50	46.0	0.0	46.0		
	1999	67	37.3	1.5	38.8		
Northeastern Junior Coll	1997	338	39.6	0.6	40.2	40.3	41.1
	1998	320	39.4	0.9	40.3		
	1999	275	35.6	1.5	37.1		
Otero Junior Coll	1997	232	33.6	2.6	36.2	41.4	43.1
	1998	180	40.6	1.7	42.2		
	1999	211	41.2	0.9	42.2		
Pikes Peak Comm Coll	1997	649	12.5	0.5	12.9	12.2	12.8
	1998	738	11.4	0.7	12.1		
	1999	673	10.8	0.0	10.8		
Pueblo Comm Coll	1997	252	13.5	0.4	13.9	23.7	24.1
	1998	301	23.3	0.3	23.6		
	1999	247	8.5	0.0	8.5		
Red Rocks Comm Coll	1997	423	16.8	1.4	18.2	17.8	18.5
	1998	425	17.4	0.7	18.1		
	1998	345	13.9	2.0	15.9		
Trinidad State Jun Coll	1997	283	35.7	0.7	36.4	35.1	35.8
	1998	236	33.1	0.8	33.9		
	1999	236	32.6	0.8	33.5		
Two-Year Inst Total	1997	5,378	19.8	0.9	20.7	n/a	n/a
	1998	5,229	20.4	0.8	21.2		
	1999	4,973	21.1	0.8	21.9		

**Base year cohort is 1997 for three-year

Cohort based on first-time, full-time, certificate and associate degree-seeking students entering in specified fall term or prior summer.

Beginning with QIS 2002, students with registration status=2 were excluded from cohorts.

Benchmark is 102% of prior year if improvement last year, 102% of prior two years average if did not improve.

Source: Cohort and benchmark calculations based on SURDS files: g\QIS\2002\tables\1B_2B_Grads_3B_3D_Ret_2yr.xls

**QIS Measure 2B: RETENTION RATES ONE YEAR AFTER ENTRY BY
COLORADO PUBLIC TWO-YEAR HIGHER EDUCATION INSTITUTIONS
Fall 2001 Cohort**

Institution	Base Year** For Cohort Entering In Fall --	# Students In Entering Cohort**	Percent Successful One Year After Entry At --			Benchmark	
			Orig Inst	Transf Inst	All CO Public Inst	Orig Inst	All CO Public Inst
Aims Comm Coll	1999	300	59.7	6.0	65.7	51.0	68.3
	2000	453	40.4	7.9	48.3		
	2001	407	51.1	10.1	61.2		
Arapahoe Comm Coll	1999	285	54.0	8.8	62.8	52.1	65.4
	2000	241	48.1	12.0	60.2		
	2001	447	51.7	13.0	64.7		
Colo Mountain Coll	1999	383	46.0	9.7	55.6	52.5	63.1
	2000	525	51.4	10.5	61.9		
	2001	367	47.7	11.4	59.1		
Colo NW Comm Coll	1999	112	45.5	10.7	56.3	57.7	71.0
	2000	115	56.5	13.0	69.6		
	2001	97	46.4	15.5	61.9		
Comm Coll of Aurora	1999	320	66.6	5.9	72.5	57.5	75.5
	2000	322	46.3	7.8	54.0		
	2001	352	48.0	8.0	56.0		
Comm Coll of Denver	1999	494	48.6	7.9	56.5	55.2	59.7
	2000	429	54.1	4.4	58.5		
	2001	502	54.0	5.0	59.0		
Front Range Comm Coll	1999	912	47.6	10.3	57.9	53.1	63.0
	2000	940	52.0	9.8	61.8		
	2001	1,359	51.7	12.2	63.9		
Lamar Comm Coll	1999	113	53.1	7.1	60.2	56.4	62.9
	2000	103	55.3	3.9	59.2		
	2001	183	56.8	10.4	67.2		
Morgan Comm Coll	1999	67	52.2	9.0	61.2	72.1	79.6
	2000	41	70.7	7.3	78.0		
	2001	37	59.5	2.7	62.2		
Northeastern Junior Coll	1999	275	56.0	9.1	65.1	59.2	72.4
	2000	317	58.0	12.9	71.0		
	2001	324	54.3	12.3	66.7		
Otero Junior Coll	1999	211	53.6	8.1	61.6	55.7	64.7
	2000	216	54.6	8.8	63.4		
	2001	342	45.6	12.3	57.9		
Pikes Peak Comm Coll	1999	673	44.7	4.8	49.5	48.7	55.2
	2000	656	47.7	6.4	54.1		
	2001	763	50.7	6.2	56.9		
Pueblo Comm Coll	1999	247	50.6	4.0	54.7	52.3	57.7
	2000	265	51.3	5.3	56.6		
	2001	344	56.1	5.8	61.9		
Red Rocks Comm Coll	1999	345	47.2	9.6	56.8	48.0	58.3
	2000	406	46.8	10.3	57.1		
	2001	481	55.9	9.8	65.7		
Trinidad State Jun Coll	1999	236	53.4	6.4	59.7	50.3	62.1
	2000	254	45.3	4.7	50.0		
	2001	307	53.7	7.5	61.2		
Two-Year Inst Total	1999	4,973	50.8	7.8	58.6	n/a	n/a
2000	5,283	50.1	8.5	58.6			
2001	6,312	51.9	9.7	61.6			

**Base year cohort is 2001; graduate totals based on Cohort based on first-time, full-time, certificate and associate degree-seeking students entering in specified fall term or prior summer.

**QIS Measure 3B: GRADUATION RATES AFTER THREE YEARS FROM
 COLORADO PUBLIC TWO-YEAR HIGHER EDUCATION INSTITUTIONS
 Fall 1999 Minority Cohort**

Institution	Cohort Entering in Fall --	# Students in Entering Cohort**	Cumulative % Graduating With Cert or Assoc Degree Three Years After Entry From --			Benchmark	
			Orig Inst	Tranf Inst	All CO Public Inst	Orig Inst	All CO Public Inst
Aims Comm Coll	1997	123	10.6	0.0	10.6	7.2	7.5
	1998	173	3.5	0.6	4.0		
	1999	68	17.6	1.5	19.1		
Arapahoe Comm Coll	1997	46	2.2	0.0	2.2	19.4	19.4
	1998	42	19.0	0.0	19.0		
	1999	44	11.4	0.0	11.4		
Colo Mountain Coll	1997	37	24.3	0.0	24.3	17.0	17.0
	1998	33	9.1	0.0	9.1		
	1999	35	14.3	0.0	14.3		
Colo NW Comm Coll	1997	23	21.7	0.0	21.7	18.9	23.5
	1998	13	15.4	7.7	23.1		
	1999	23	13.0	0.0	13.0		
Comm Coll of Aurora	1997	85	4.7	1.2	5.9	15.1	15.1
	1998	81	14.8	0.0	14.8		
	1999	112	27.7	0.9	28.6		
Comm Coll of Denver	1997	243	9.5	0.0	9.5	14.6	14.9
	1998	280	14.3	0.4	14.6		
	1999	226	12.8	0.4	13.3		
Front Range Comm Coll	1997	158	17.1	0.0	17.1	15.7	16.1
	1998	138	13.8	0.7	14.5		
	1999	121	10.7	1.7	12.4		
Lamar Comm Coll	1997	47	21.3	0.0	21.3	31.4	31.4
	1998	39	30.8	0.0	30.8		
	1999	31	29.0	0.0	29.0		
Morgan Comm Coll	1997	10	30.0	0.0	30.0	29.2	29.2
	1998	11	27.3	0.0	27.3		
	1999	9	22.2	0.0	22.2		
Northeastern Junior Coll	1997	41	9.8	2.4	12.2	13.9	13.9
	1998	44	13.6	0.0	13.6		
	1999	40	12.5	2.5	15.0		
Otero Junior Coll	1997	79	31.6	1.3	32.9	44.7	44.7
	1998	57	43.9	0.0	43.9		
	1999	84	38.1	1.2	39.3		
Pikes Peak Comm Coll	1997	186	5.9	0.0	5.9	13.3	14.3
	1998	207	13.0	1.0	14.0		
	1999	193	9.8	0.0	9.8		
Pueblo Comm Coll	1997	118	11.9	0.8	12.7	29.0	29.0
	1998	151	28.5	0.0	28.5		
	1999	116	7.8	0.0	7.8		
Red Rocks Comm Coll	1997	72	13.9	0.0	13.9	13.9	15.3
	1998	60	13.3	1.7	15.0		
	1999	60	18.3	5.0	23.3		
Trinidad State Jun Coll	1997	162	28.4	0.0	28.4	30.8	31.6
	1998	126	30.2	0.8	31.0		
	1999	106	27.4	0.0	27.4		
Two-Year Inst Total	1997	1,430	14.3	0.3	14.6	n/a	n/a
	1998	1,455	17.3	0.5	17.9		
	1999	1,268	16.9	0.8	17.7		

**Base year cohort is 1999 for three-year graduation rate; graduate totals based on specified Cohort based on first-time, full-time, certificate and associate degree-seeking students entering in specified fall term or prior summer and reported in an ethnic minority category. Beginning with QIS 2002, students with registration status=2 were excluded from cohorts.

**QIS Measure 3D: RETENTION RATES ONE YEAR AFTER ENTRY BY
COLORADO PUBLIC TWO-YEAR HIGHER EDUCATION INSTITUTIONS
Fall 2001 Minority Cohort**

Institution	Base Year* For Cohort Entering In Fall --	# Students In Entering Cohort**	Percent Successful One Year After Entry By --			Benchmark	
			Orig Inst	Transf Inst	All CO Public Inst	Orig Inst	All CO Public Inst
Aims Comm Coll	1999	68	50.0	7.4	57.4	38.8	45.0
	2000	149	26.2	4.7	30.9		
	2001	87	49.4	9.2	58.6		
Arapahoe Comm Coll	1999	44	54.5	11.4	65.9	51.6	60.8
	2000	30	46.7	6.7	53.3		
	2001	63	39.7	15.9	55.6		
Colo Mountain Coll	1999	35	45.7	5.7	51.4	67.1	83.2
	2000	38	65.8	15.8	81.6		
	2001	22	68.2	0.0	68.2		
Colo NW Comm Coll	1999	23	43.5	4.3	47.8	51.0	64.9
	2000	22	50.0	13.6	63.6		
	2001	22	40.9	13.6	54.5		
Comm Coll of Aurora	1999	112	65.2	3.6	68.8	53.9	61.2
	2000	121	40.5	10.7	51.2		
	2001	132	50.0	7.6	57.6		
Comm Coll of Denver	1999	226	51.3	4.0	55.3	55.4	59.2
	2000	219	54.3	3.7	58.0		
	2001	276	52.2	2.9	55.1		
Front Range Comm Coll	1999	121	40.5	8.3	48.8	56.6	64.0
	2000	137	55.5	7.3	62.8		
	2001	219	48.9	12.8	61.6		
Lamar Comm Coll	1999	31	54.8	3.2	58.1	49.5	57.1
	2000	26	42.3	11.5	53.8		
	2001	43	51.2	11.6	62.8		
Morgan Comm Coll	1999	9	33.3	11.1	44.4	87.4	73.7
	2000	7	85.7	14.3	100.0		
	2001	8	75.0	0.0	75.0		
Northeastern Junior Coll	1999	40	30.0	15.0	45.0	39.9	57.7
	2000	46	39.1	17.4	56.5		
	2001	50	34.0	18.0	52.0		
Otero Junior Coll	1999	84	45.2	9.5	54.8	55.2	62.4
	2000	85	54.1	7.1	61.2		
	2001	125	42.4	10.4	52.8		
Pikes Peak Comm Coll	1999	193	43.5	2.6	46.1	46.2	53.6
	2000	179	45.3	7.3	52.5		
	2001	226	44.7	5.3	50.0		
Pueblo Comm Coll	1999	116	49.1	2.6	51.7	56.0	62.7
	2000	122	54.9	6.6	61.5		
	2001	155	59.4	3.9	63.2		
Red Rocks Comm Coll	1999	60	46.7	6.7	53.3	53.4	59.9
	2000	63	52.4	6.3	58.7		
	2001	77	42.9	5.2	48.1		
Trinidad State Jun Coll	1999	106	50.0	5.7	55.7	47.7	52.8
	2000	140	43.6	4.3	47.9		
	2001	143	51.7	7.0	58.7		
Two-Year Inst Total	1999	1,268	48.4	5.5	53.9	n/a	n/a
2000	1,384	47.4	7.1	54.5			
2001	1,648	49.0	7.6	56.6			

**Base year cohort is 2001; graduate totals based on specified number of academic year(s) plus the Cohort based on first-time, full-time, certificate and associate degree-seeking students entering in

QIS Measure 4B: CAREER AND TECHNICAL GRADUATES EMPLOYED
OR CONTINUING POST-SECONDARY EDUCATION AT
COLORADO PUBLIC 2-YEAR HIGHER EDUCATION INSTITUTIONS
FY 2001-2002

College	# of Graduates	# Responding	# Employed	# Continuing Education	# Employed and Continuing Education	# Not Employed and Seeking Employment	# Not Employed and Not Seeking Employment **	% Employed and/or Engaged in Further Education
Aims	778	140	64	17	53	0	0	96.00%
ACC	611	288	183	16	74	12	3	95.79%
CCA	406	110	76	4	14	11	5	89.52%
CCD	613	295	145	41	81	20	8	93.03%
CMC	301	150	139	70	145	0	0	96.70%
CNCC	74	40	36	3	0	0	1	100.00%
FRCC	1419	620	344	29	215	32	0	94.84%
LCC	157	152	91	10	50	0	1	100.00%
MCC	203	157	60	11	83	1	2	99.35%
NJC	192	139	114	13	2	2	8	98.47%
OJC	219	182	80	12	82	2	6	98.86%
PPCC	540	268	156	16	77	11	8	95.77%
PCC	415	130	77	12	34	3	4	97.62%
RRCC	715	295	110	24	151	8	2	97.27%
TSJC	421	366	242	17	87	3	17	99.14%

** This column is excluded from the calculation of the percentages of this indicator because community colleges are not able to influence those graduates not employed and not seeking employment.

**QIS Measure 5: INSTITUTIONAL SUPPORT EXPENDITURES
PER FULL-TIME EQUIVALENT STUDENT**

Institution	Institutional Support Expenditures (1)	Total Current Fund Expenditures & Transfers (2)	Total Student FTE (3)	Institutional Support Expenditures per Student FTE [= Col 1 / Col 3] (4)	Benchmark -- Comparison Group Avg of Inst Support Expenditures per Student FTE (5)	Inst Support Expenditures as % of Total Current Fund Expend & Transfers [= Col 1 / Col 2] (6)	Benchmark Comparison Group Avg of Inst Support Expenditures as % of Total Current Fund Expend & Transfers (7)
Four-Year Institutions							
Adams State Coll	\$2,314,986	\$31,205,759	3,948	\$586	\$1,465 - \$1,525	7.42%	9.60% - 10.00%
Colorado State Univ	\$16,473,000	\$516,181,845	22,360	\$737	\$1,999 - \$2,081	3.19%	5.26% - 5.48%
Colorado State Univ - Pueblo	\$2,341,232	\$51,574,996	4,134	\$566	\$1,178 - \$1,226	4.54%	9.01% - 9.37%
Fort Lewis Coll	\$3,614,754	\$49,481,107	4,024	\$898	\$1,371 - \$1,427	7.31%	9.70% - 10.10%
Mesa State Coll	\$1,767,255	\$42,507,397	4,327	\$408	\$1,295 - \$1,347	4.16%	9.25% - 9.63%
Metropolitan State Coll of Denver	\$9,177,403	\$106,064,514	12,379	\$741	\$1,546 - \$1,610	8.65%	11.17% - 11.63%
Univ of Colo - Boulder	\$33,753,675	\$662,543,832	25,060	\$1,347	\$1,977 - \$2,057	5.09%	5.22% - 5.44%
Univ of Colo - Colorado Springs	\$6,314,837	\$64,216,824	4,817	\$1,311	\$1,593 - \$1,658	9.83%	10.16% - 10.58%
Univ of Colo - Denver	\$11,398,833	\$128,631,791	8,453	\$1,348	\$1,512 - \$1,574	8.86%	7.64% - 7.96%
U of Northern Colo	\$6,242,784	\$132,826,733	10,884	\$574	\$1,472 - \$1,532	4.70%	7.34% - 7.64%
Western State Coll	\$1,812,452	\$26,180,871	2,184	\$830	\$1,436 - \$1,494	6.92%	10.54% - 10.97%
Two-Year Institutions							
Aims Comm Coll	\$4,908,582	\$35,566,319	3,711	\$1,323	\$1,302 - \$1,356	13.80%	13.13% - 13.67%
Arapahoe Comm Coll	\$2,864,660	\$29,689,992	3,652	\$784	\$1,339 - \$1,393	9.65%	13.38% - 13.92%
Colorado Mountain Coll	\$6,105,335	\$40,558,341	3,386	\$1,803	\$1,943 - \$2,023	15.05%	14.00% - 14.58%
Colorado NW Comm Coll	\$1,090,953	\$11,168,677	899	\$1,214	\$1,630 - \$1,696	9.77%	13.38% - 13.92%
Comm Coll of Aurora	\$2,123,926	\$19,051,953	2,210	\$961	\$1,286 - \$1,338	11.15%	12.50% - 13.02%
Comm Coll of Denver	\$2,906,487	\$32,099,280	3,340	\$870	\$1,348 - \$1,403	9.05%	13.15% - 13.69%
Front Range Comm Coll	\$5,913,746	\$55,147,734	6,836	\$865	\$1,316 - \$1,370	10.72%	13.74% - 14.30%
Lamar Comm Coll	\$773,934	\$7,447,615	623	\$1,242	\$1,785 - \$1,857	10.39%	13.19% - 13.74%
Morgan Comm Coll	\$991,787	\$9,040,483	794	\$1,249	\$1,635 - \$1,701	10.97%	13.49% - 14.05%
Northeastern Junior Coll	\$1,337,828	\$17,171,599	1,884	\$710	\$1,322 - \$1,376	7.79%	12.51% - 13.03%
Otero Junior Coll	\$835,619	\$14,921,517	929	\$899	\$1,716 - \$1,786	5.60%	13.56% - 14.12%
Pikes Peak Comm Coll	\$3,928,425	\$45,581,842	5,290	\$743	\$1,297 - \$1,349	8.62%	13.36% - 13.90%
Pueblo Comm Coll	\$2,590,140	\$29,158,701	2,580	\$1,004	\$1,286 - \$1,338	8.88%	12.50% - 13.02%
Red Rocks Comm Coll	\$2,746,787	\$28,716,201	3,822	\$719	\$1,341 - \$1,395	9.57%	13.35% - 13.89%
Trinidad State Junior Coll	\$1,359,218	\$18,172,684	1,228	\$1,107	\$1,593 - \$1,659	7.48%	13.48% - 14.04%

Full-time Equivalent Students are calculated as full-time headcount plus one-third of part-time headcount.
Date Source: NCHEMS NCES Finance Dataset, 2001-2002
Date Source: NCHEMS Enrollment Dataset, Fall 2001

**QIS Measure 6: CLASS SIZE COMPARISONS FOR
COLORADO PUBLIC TWO-YEAR INSTITUTIONS
Fall Term 2001**

Institution	Class Sizes for Fall Term --	Total # of Sections	Number of Sections with Student Enrollment of --		Percent of Sections with Student Enrollment of --		Benchmarks	
			≤15	≥35	≤15	≥35	≤15	≥35
Aims Comm Coll	1999	1,282	943	20	73.6%	1.6%	75.4%	1.6%
	2000	1,243	919	19	73.9%	1.6%		
	2001	1,262	943	25	74.7%	2.0%		
Arapahoe Comm Coll	1999	1,054	583	25	55.3%	2.4%	56.2%	2.0%
	2000	1,010	554	16	54.9%	1.6%		
	2001	963	511	10	53.1%	1.0%		
Comm College of Aurora	1999	491	235	1	47.9%	0.2%	50.8%	0.3%
	2000	484	241	2	49.8%	0.4%		
	2001	625	351	2	56.2%	0.3%		
Comm Coll of Denver	1999	856	481	14	56.2%	1.6%	57.5%	1.5%
	2000	811	457	11	56.4%	1.4%		
	2001	861	433	25	50.3%	2.9%		
Colo Mountain Coll	1999	1,813	1,378	19	76.0%	1.0%	75.6%	1.3%
	2000	1,774	1,283	27	72.3%	1.5%		
	2001	1,161	815	35	70.2%	3.0%		
Colo NW Comm Coll	1999	756	550	50	72.8%	6.6%	88.6%	3.4%
	2000	634	551	1	86.9%	0.2%		
	2001	719	616	3	85.7%	0.4%		
Front Range Comm Coll	1999	1,668	759	40	45.5%	2.4%	45.3%	2.4%
	2000	1,669	725	39	43.4%	2.3%		
	2001	1,763	789	44	44.8%	2.5%		
Lamar Comm Coll	1999	237	171	1	72.2%	0.4%	74.3%	0.6%
	2000	277	202	2	72.9%	0.7%		
	2001	360	291	2	80.8%	0.6%		
Morgan Comm Coll	1999	363	302	2	83.2%	0.6%	83.0%	0.5%
	2000	375	298	1	79.5%	0.3%		
	2001	384	310	2	80.7%	0.5%		
Northeastern Junior Coll	1999	653	428	28	65.5%	4.3%	71.1%	3.9%
	2000	686	478	24	69.7%	3.5%		
	2001	671	461	22	68.7%	3.3%		
Otero Junior Coll	1999	292	177	15	60.6%	5.1%	61.2%	4.8%
	2000	288	171	13	59.4%	4.5%		
	2001	303	184	25	60.7%	8.3%		
Pikes Peak Comm Coll	1999	1,663	987	11	59.4%	0.7%	63.6%	0.5%
	2000	1,686	1,051	3	62.3%	0.2%		
	2001	1,630	1,010	8	62.0%	0.5%		
Pueblo Comm Coll	1999	1,117	770	10	68.9%	0.9%	72.3%	1.0%
	2000	985	698	11	70.9%	1.1%		
	2001	999	670	33	67.1%	3.3%		
Red Rocks Comm Coll	1999	1,912	1,424	23	74.5%	1.2%	72.2%	1.2%
	2000	1,426	955	17	67.0%	1.2%		
	2001	1,336	796	15	59.6%	1.1%		
Trinidad State Jun Coll	1999	663	573	7	86.4%	1.1%	87.0%	0.8%
	2000	645	543	3	84.2%	0.5%		
	2001	629	538	2	85.5%	0.3%		
	1999	14,820	9,761	266	65.9%	1.8%		
	2000	13,993	9,126	189	65.2%	1.4%		
	2001	13,666	8,718	253	63.8%	1.9%		

Source: Common Data Set 2002-2003

QIS Measure 7: FACULTY INSTRUCTIONAL WORKLOAD

ACADEMIC YEAR 2001-2002

Avg. Weekly Teaching Hours per Instructor Category--

Institution	Type A (Group) Instruction					Benchmark -- Nat'l Study of Postsecondary Faculty	Type B (Individualized Instruction)		
	Tenured Faculty FTE	Tenure-Track Faculty FTE	Other** Faculty FTE	Full-time Faculty FTE	Faculty FTE Total		Total Full-time Faculty FTE	Enrollments for All Full-time Faculty Categories	Avg. Student Enrollment per Full-time Faculty FTE
Four-Year Public Institutions									
Adams State Coll	13.8	14.6	15.3		96.0	14.2	11.1 - 11.5	864	9.0
Colo State Univ	8.5	7.8	14.3		866.0	9.2	7.8 - 8.1	7,374	8.5
U of Southern CO (to be CSU-Pueblo)	11.1	11.1	11.4		156.0	11.1	11.1 - 11.5	341	2.2
Fort Lewis Coll	13.8	10.4	13.6		169.7	12.7	11.1 - 11.5	925	5.5
Mesa State Coll	17.6	18.1	18.8		199.0	18.0	11.1 - 11.5	175	9.7
Metropolitan St Coll of Denver	11.1	12.9	15.9		374.0	12.4	11.1 - 11.5	8,051	21.5
Univ of Colo - Boulder	4.9	5.2	11.8		1,034.0	6.2	7.8 - 8.1	7,724	7.5
Univ of Colo - Colo Springs	10.7	10.7	12.6		202.0	11.4	9.2 - 9.6	2,475	12.3
Univ of Colo - Denver	7.4	9.3	13.0		400.0	9.4	9.2 - 9.6	3,235.0	8.1
Univ of Northern Colo	11.6	10.8	13.0		414.0	11.7	9.2 - 9.6	4,422	10.7
Western State Coll	12.6	11.5	---		80.0	12.2	11.1 - 11.5	662	8.3
Two-Year Public Institutions									
Aims Comm Coll					117.0	17.8	17.2 - 17.9	656	5.6
Arapahoe Comm Coll					86.2	18.5	17.2 - 17.9	336	3.9
Colo Mountain Coll					75.0	21.2	17.2 - 17.9	882	11.8
Colo NW Comm Coll					48.0	16.5	17.2 - 17.9		0.0
Comm Coll of Aurora					29.2	14.7	17.2 - 17.9	68	2.3
Comm Coll of Denver					77.0	32.9	17.2 - 17.9	46	0.6
Front Range Comm Coll					126.9	17.1	17.2 - 17.9	135	1.1
Lamar Comm Coll					18.9	30.3	17.2 - 17.9	35	1.9
Morgan Comm Coll					35.4	27.2	17.2 - 17.9	40	1.1
Northeastern Junior Coll					59.0	18.5	17.2 - 17.9	329	5.6
Otero Junior Coll					33.0	21.8	17.2 - 17.9	238	7.2
Pikes Peak Comm Coll					139.6	23.2	17.2 - 17.9	2,244	16.1
Pueblo Comm Coll					78.8	13.6	17.2 - 17.9	1,081	13.7
Red Rocks Comm Coll					68.8	16.8	17.2 - 17.9	105	1.5
Trinidad State Junior Coll					41.5	22.9	17.2 - 17.9	61	1.5

*Full-time equivalent (FTE) faculty totals represent state-funded (or general funded) instruction in fall and spring term. by contracts, grants, or extended studies fees were excluded from FTE totals.

**Based on faculty who are neither tenured or tenure-track but have the expectation of an on-going appointment and are full-time as defined by the institution.

Notes: (1) Average measures for group and individual instruction should not be combined. Group instruction is measured in contact hours while individualized instruction is based on student headcount.

(2) Type A instruction involves direct contact of faculty with students and includes the following: lecture, lab, recitation/discussion/ seminar, audit, private instruction, physical education/recreation activity, studio, and field instruction.

(3) Type B instruction encompasses distance education and a variety of individualized faculty/student relationships such as independent study, master's thesis/doctoral dissertation, student teaching, co-ops, internships, and practica.

Measures 8 and 9: INSTITUTION-SPECIFIC INDICATORS

Institution	Indicator #8	Indicator #9
<i>Two-Year Public Institutions</i>		
Aims CC	<p><u>Indicator #8:</u> Providing Instructional Alternatives for Students.</p> <p>Measure: For fall 2003, classes offered at non-traditional times, places, blocks, learning and delivery modes.</p> <p>Results: For this indicator last year, 30% of total sections were related to non-traditional delivery. These alternatives accounted for 34.9% of total sections for 2003.</p>	<p><u>Indicator #9:</u> Articulation and collaboration throughout the service area.</p> <p>Measure: Number of articulation agreements, collaboration with high schools, collaboration in the workplace.</p> <p>Results: Articulation agreements – 28; collaboration – 24 advanced studies sections, 197 students served; collaboration – 187 customized job training sections and 1,533 students served. Numbers consistent with previous years.</p>
ACC	<p><u>Indicator #8:</u> Percent of minority student compared to availability in service area</p> <p>System Benchmark: 1.03 Results: 1.58</p>	<p><u>Indicator #9:</u> Percent of course section offered at non-traditional times.</p> <p>System Benchmark: 38.76 Results: 62.0</p>
CMC	<p><u>Indicator #8:</u> Participation Rate. Because CMC's commitment to access for residents of its communities remains strong, the College has selected the following goal as one of our Quality Action Projects through the North Central Association Academic Quality Improvement Project.</p> <p>Measure: Participation rate is defined as the number of in-district students, 18 and older, at Colorado Mountain College (unduplicated headcount), divided by the number of residents, 18 and older, in the College District. The statewide average for this indicator is 2.3%. Because of Colorado Mountain College's commitment to student access, and its location of campuses throughout the District, the goal for CMC's participation rate will continue to be at least 150% of the statewide average participation rate. Student access is identified as one of the four priorities for AQIP, with a 14% participation rate for all students at the target.</p> <p>Benchmark (Statewide): 2.3% (average of CCC) 150% goal 3.45%</p> <p>Results: CMC Rate 13.8%</p>	<p><u>Indicator #9:</u> Minority participation rate</p> <p>Measure: One of Colorado Mountain College's accreditation goals is to have 20% of the annual student headcount made up of minority students. Currently, we are meeting that goal collegewide, with 21.7% minority students. Because the minority percentages in the communities making up CMC's District vary widely, and because a large number of minority student are in pre-college level course, the College is in the process of further refining its 20% accreditation goal. We may set goals based on community percentage, and may further set goals for minority student progression through college courses. The percentage of minority students by campus: Timberline, 17.5%; Alpine, 6.3%; Roaring Fork, 28.7%; Summit, 20.0%; Vail/Eagle, 41.5%; Aspen, 19.7%; Rifle, 27.8%; and distance education, 8.7%.</p> <p>Benchmark/Goal: 20% of annual student headcount</p> <p>Results: 21.7%</p>

Institution	Indicator #8	Indicator #9
CNCC	<p><u>Indicator #8</u>: Percent of students expressing satisfaction with instruction.</p> <p>System Benchmark: 93.84 Results: 93.30</p>	<p><u>Indicator #9</u>: Percent of course sections offered at nontraditional times.</p> <p>System Benchmark: 38.76 Results: 49.70</p>
CCA	<p><u>Indicator #8</u>: Percent of course sections offered at nontraditional times.</p> <p>System Benchmark: 38.76 Results: 56.92</p>	<p><u>Indicator #9</u>: Percent of minority students compared to availability in service area.</p> <p>System Benchmark: 1.03 Results: 1.26</p>
CCD	<p><u>Indicator #8</u>: Percent of students expressing satisfaction with instruction.</p> <p>System Benchmark: 93.84 Results: 95.5</p>	<p><u>Indicator #9</u>: Percent of successful students (graduation and/or transfer) of color compared to percent of adult service area who are people of color.</p> <p>System Benchmark: 1.03 for each Results: 1.28 Graduates; 1.19 Transfers</p>
FRCC	<p><u>Indicator #8</u>: Percent of students expressing satisfaction with instruction.</p> <p>System Benchmark: 93.84 Results: 93.33</p>	<p><u>Indicator #9</u>: Percent of course sections offered at nontraditional times and percent of course sections offered in nontraditional formats.</p> <p>System Benchmark: 38.76 Results: 54.3</p>
LCC	<p><u>Indicator #8</u>: Service area participation rates.</p> <p>System Benchmark: 3.4 Results: 9.0</p>	<p><u>Indicator #9</u>: Percent of course section offered at nontraditional times</p> <p>System Benchmark: 38.76 Results: 37.20</p>
MCC	<p><u>Indicator #8</u>: Percent of students expressing satisfaction with instruction.</p> <p>System Benchmark: 93.84 Results: 99.0</p>	<p><u>Indicator #9</u>: Service area participation rates.</p> <p>System Benchmark: 3.4 Results: 7.1</p>
NJC	<p><u>Indicator #8</u>: Percent of course sections in off-campus locations other than state-owned facilities.</p> <p>System Benchmark: 18.36 Results: 29.0</p>	<p><u>Indicator #9</u>: Service area participation rates.</p> <p>System Benchmark: 3.4 Results: 8.2</p>
OJC	<p><u>Indicator #8</u>: Percent of students expressing satisfaction with instruction.</p> <p>System Benchmark: 93.84 Results: 97.5</p>	<p><u>Indicator #9</u>: Service area participation rates.</p> <p>System Benchmark: 3.4 Results: 9.16</p>

Institution	Indicator #8	Indicator #9
PPCC	<p><u>Indicator #8:</u> Percent of minority students compared with availability in service area</p> <p>System Benchmark: 1.03 Results: 1.89</p>	<p><u>Indicator #9:</u> Percent of course sections offered in nontraditional formats.</p> <p>System Benchmark: 30.6 Results: 50.3</p>
PCC	<p><u>Indicator #8:</u> Percent of graduates of color compared to percent of adult service area who are people of color.</p> <p>System Benchmark: 1.03 Results: 1.41</p>	<p><u>Indicator #9:</u> Percent of minority students compared to availability in service area.</p> <p>System Benchmark: 1.03 Results: 1.30</p>
RRCC	<p><u>Indicator #8:</u> Percent of minority students compared with availability in service area</p> <p>System Benchmark: 1.03 Results: 2.05</p>	<p><u>Indicator #9:</u> Evaluation by students of entire educational experience on CCSSE (scale 1-4 w/4 = Excellent). Benchmark based on overall mean for all participants nationally.</p> <p>System Benchmark: 3.08 Results: 3.21</p>
TSJC	<p><u>Indicator #8:</u> Percent of minority faculty, executive and other professional staff compared with statewide availability; percent of minority clerical, technical, skilled craft and maintenance staff compared with service area availability,</p> <p>System Benchmark: 1.03 for each</p> <p>Results: Minority faculty 2.65 Minority staff 1.20</p>	<p><u>Indicator #9:</u> Percent of minority students compared with availability in service area</p> <p>System Benchmark: 1.03 Results: 1.07</p>

Dec 2004 Quality Indicators Comparison across Community Colleges

College	Indicator 1B Grad Rate		Indicator 2B Freshmen Retention		Indicator 3B Minority Grad Rate		Indicator 3D Minority Retention		Indicator 4B Grad Placement and Cont. Educ.	Indicator 5 Institutional Support	Indicator 6 Class Size		Indicator 7 Faculty Workload	% Benchmarks Met
	Orig Inst	All Inst	Orig Inst	All Inst	Orig Inst	All Inst	Orig Inst	All Inst			< or = 15	> or = 35		
ACC	Y	Y		Y					Y	Y		Y	Y	53.8%
CNCC									Y	Y		Y		23.1%
CCA	Y	Y			Y	Y				Y	Y	Y		53.8%
CCD									Y	Y			Y	23.1%
FRCC				Y					Y	Y				23.1%
LCC	Y		Y	Y			Y	Y	Y	Y	Y	Y	Y	76.9%
MCC									Y	Y		Y	Y	30.8%
NJC						Y			Y	Y		Y	Y	38.5%
OJC									Y	Y			Y	23.1%
PPCC				Y					Y	Y		Y	Y	38.5%
PCC			Y	Y			Y	Y	Y	Y				46.2%
RRCC			Y	Y	Y	Y			Y	Y		Y		53.8%
TSJC			Y	Y			Y	Y	Y	Y		Y	Y	61.5%
	23.1%	15.4%	30.8%	53.9%	15.4%	23.1%	23.1%	23.1%	92.3%	100.0%	15.4%	69.2%	61.5%	

Lin Note: copies from Email from George Delaney dated January 6, 2004 in IR email folder.

Overall = 42.0% Met or Exceeded Benchmark

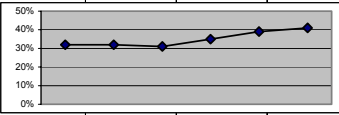
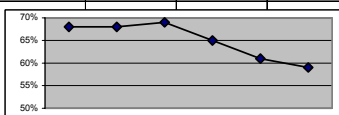
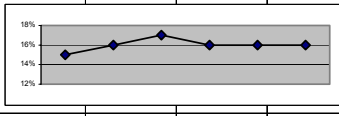
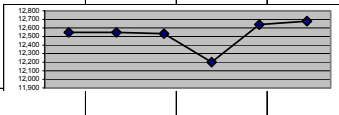
"Y" - met benchmark for indicator
blank- did not meet benchmark

ACC Report Card

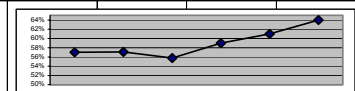
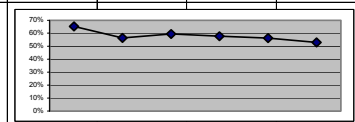
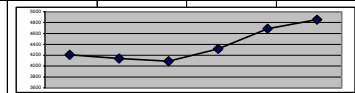
Institutional Effectiveness: ACC's Report Card

Office of Institutional Research

Compiled by Lin Claussen and Margaret Puryear

		Agency reported to	INFO. SOURCE	98-99	99-00	00-01	01-02	02-03	03-04	Benchmark	Benchmark Source	Benchmark met?					
Average Age	Mean		ACC IR: ALLUNDUP.fex by M.P.				32	31	30	Not Applicable							
	Median		ACC IR: ALLUNDUP.fex by M.P.				28	26	26	Not Applicable							
	Mode		ACC IR: ALLUNDUP.fex by M.P.				21	20	20	Not Applicable							
Market Penetration Rate (detail attached)	credit courses pulling ages 18 years and older		ACC IR: report by M.P. via fex & census					2.29%	2.18%	not established							
	NON-credit courses pulling ages 6 years and older		ACC IR: report by M.P. via fex & census					1.18%	.97%	not established							
Enrollment Trend by headcount	Full-time	NCA	ACC IR: accrt_yr.fex	4025	3913	3896	4223	4880	5218	Not Applicable							
	FT % of Unduplicated HC																
	Part-time	NCA	ACC IR: accrt_yr.fex	8522	8631	8633	7976	7758	7460	Not Applicable							
	PT % of Unduplicated HC																
	Minority		ACC IR: accrt_yr.fex	1746	1851	1890	1853	1948	2025	2025	Not Applicable						
	Minority as a % of Unduplicated HC less "other"																
	Unduplicated per year	CCHE	ACC IR: hc_und.fex	12,549	12,547	12,532	12,199	12,638	12,678	12,678	Not Applicable						
	Non-credit HC								6,691	6,186	Not Applicable						

		Agency reported to	INFO. SOURCE	98-99	99-00	00-01	01-02	02-03	03-04	Benchmark	Benchmark Source	Benchmark met?				
Annualized FTE (Total Credits ÷30)	In-state (state-subsidized)	CCHE	ACC final FTE report to CCHE	3832	3814.8	3799.7	4079.77	4500.23	4657.23	Not Applicable						
	Out-of-state (not subsidized)	CCHE	ACC final FTE report to CCHE	375.7	324.9	291.4	238.35	187.59	196.53	Not Applicable						
	TOTAL "Reportable" Annualized FTE	CCHE	ACC final FTE report to CCHE	4207.7	4139.7	4091.1	4318.2	4687.82	4853.76	Not Applicable						
	% growth compared to previous year (Reportable FTE)				(-1.6%)	(-1.2%)	5.60%	8.60%	3.50%	6.1%	System College average	No				
Annual Total "countable" Credits Hrs (Res and Non-res)		CCHE	ACC final FTE report to CCHE	126,231.7	124,190.2	122,727.5	129,540.5	140,634.8	145,489.0	Not Applicable						
Annual "non-countable" credits including NCTI		CCHE	ACC final FTE report to CCHE					44,841.0	41,265.0	Not Applicable						
Average Credit Load for Fall Semester								9.6	9.6	Not Applicable						
Applicant Yield rate	Applicants (totaled across 3 terms)		ACC IR: app2enrl.fex M.P.	12,412	14,404	13,626	12,785	13,807	13,750	Not Applicable						
	# of new applicants who enrolled (totaled across 3 terms)		ACC IR: app2enrl.fex M.P.	8,101	8135	8111	7375	7771	7337	Not Applicable						
	Applicant Yield Rate: # of new applicants who enrolled / # of new applicants			65%	57%	60%	58%	56%	53%	65%	Set by ACC on highest historical yield rate	No				
Retention Rates	In-semester Completer or Persistence Yield rate (pass min. one class with D or above--did not drop, withd or fail all courses)		ACC IR: enrterm.fex					03F 85%	04F 86%	not established						
	Fall to Spring (Retained or graduated) - raw number		ACC IR: enrterm.fex and grad report	4048 + 224 grads of 7492	4066 + 188 grads of 7514	4006 + 150 grads of 7447	4095 + 206 grads of 7252	4575 + 206 grads of 7871	4793 + 218 grads of 7803	Not Applicable						
	Fall to Spring (Retained or graduated) % of total Fall enrollment			57%	57%	56%	59%	61%	64%	not established						
Degrees/Certificate Granted	All degrees & certificates	CCHE IPEDS	ACC IR: Grad_fin.fex FTP to excel	836	747	728	846	817	842	Not Applicable						



		Agency reported to	INFO. SOURCE	98-99	99-00	00-01	01-02	02-03	03-04	Benchmark	Benchmark Source	Benchmark met?				
VOCATIONAL Graduate Placement Rate	# of respondents to survey	CCHE	Graduate Employment Status Survey administered by the Career Ctr				339	394		Not Applicable						
	# respondents employed or continuing their education	CCHE	Graduate Employment Status Survey administered by the Career Ctr				305 (90%)	324 (82%)		90%	Fall 2002	No				
Academic Probation/Suspension rates	# placed on academic probation students - Fall		ACC IR: probatn.fex p	194	204	195	231	258	261	Not Applicable						
	Probation student retention rate Fall to Spring			42.80%	42.20%	59%	44.20%	42.20%	43.35%	not established						
	# of students placed on academic suspension - Fall		ACC IR: probatn.fex ac	57	67	95	82	80	123	Not Applicable						
High School co-enrolls	Unduplicated headcount		ACC IR: hs_by_yr.fex L.C.	919	1247	1315	989	816	895	not established						
	annualized FTE (Total Credit=30)		ACC IR: hs_by_yr.fex L.C.	166	222	248	209	168	185	not established						
High School conversion rates (for high schools within service area)	% of Recent High Graduates who enrolled for Fall Semester		ACC IR: HS_grads.fex				6%	7%	7%	not established						
Financial Aid Awards	Amount of Financial Aid Awarded		Fin. Aid. J.C.	4,532,424	4,984,214	4,953,639	6,595,291	8,556,900	9,799,895	Not Applicable						
	Financial Aid Applicants		Fin. Aid. J.C.	2,871	3,059	3,220	3,889	4,210	4,525	Not Applicable						
	# of students awarded Financial Aid		Fin. Aid. J.C.	1864	1878	1977	2425	2430		Not Applicable						
% of class sections offered at non-traditional times (meet other than between 8am-4:30pm, M-		CCCS	QIS				61%	61%	62%	38.8%	Set by CCCS via QIS	Yes				

The following data are cohort-based

Cohort definition: first-time to college, full-time, degree-seeking students enrolled for each Summer/Fall make up this cohort which is tracked by the Colorado Commission of Higher Education for the Quality Indicator Report (QIS).

		Agency reported to	Info. Source	1996 cohort	1997 cohort	1998 cohort	1999 cohort	2000 cohort	2001 cohort	Benchmark	Benchmark Source	Benchmark met?
Cohorts	# of students in cohort	supplied by CCHE	CCHE: Cohort Grad Rates - QIS	355	295	295	285	241	447	n/a		
	# in Minority Cohort	supplied by CCHE	CCHE: cohort grad rates - QIS	61	46	42	44	30	63	n/a		
Cohort Graduation Rates	# from cohort who graduated or transferred in 3.25 years or less	supplied by CCHE	CCHE: Cohort Grad Rates - QIS	91	46	60	64			n/a		
	Percent of graduates (graduation rate)	supplied by CCHE	CCHE: QIS	25.6%	15.6%	20.3%	22.5%			20.7%	set by CCCS via QIS	Yes
	cohort # who did not graduate	supplied by CCHE	CCHE: Cohort Grad Rates - QIS	264	249	235	221			n/a		
	minority cohort # who graduated in 3.25 years or less	supplied by CCHE	CCHE: Cohort Grad Rates - QIS	14	1	8	5			n/a		
	Minority Cohort graduation rate	supplied by CCHE	CCHE: QIS	23.0%	2.2%	19.0%	11.4%			19.40%	set by CCCS via QIS	No

		Agency reported to	Info. Source	1996 cohort	1997 cohort	1998 cohort	1999 cohort	2000 cohort	2001 cohort	Benchmark	Benchmark Source	Benchmark met?
Cohort Retention Rates	Retained or graduated at ACC one year after entry		Internal Calc			135	154	116	231	n/a		
	ACC Retention Rate	provided by CCHE	CCHE: QIS			45.8%	54.0%	48.1%	51.7%	56.20%	set by CCCS via QIS	No
	Transferred		Internal Calc			37	25	29	58	n/a		
	Overall Cum Retention Rate (includes transfers)	provided by CCHE	CCHE: Cohort Success Rates, QIS			58.3%	62.8%	60.2%	64.7%	65.4%	set by CCCS via QIS	No
	Not graduated nor retained		Internal Calc			123	106	96	158	n/a		
	Minority student graduate or retained at ACC one year after entry		Internal Calc			17	24	14	25	n/a		
	ACC Minority Retention Rate	provided by CCHE	Cohort Success Rates, QIS			40.5%	54.5%	46.7%	39.7%	51.6%	set by CCCS via QIS	No
	Minority Transfer		Internal Calc			4	5	2	10	n/a		
	Overall Cum Minority Retention Rate	provided by CCHE	CCHE: QIS			50.0%	65.9%	53.3%	55.6%	60.8%	set by CCCS via QIS	No
	Minorities Not graduated nor retained		Internal Calc			21	15	14	28	n/a		

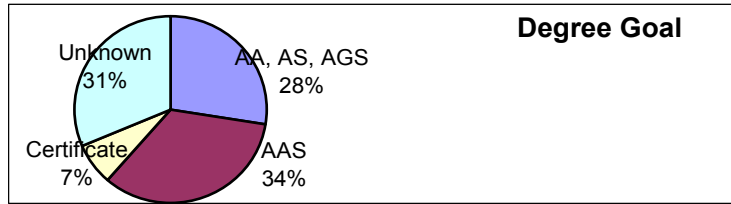
Detailed Reports

ACC General Demographics based on Fall 2003 Enrollments

04F: 7806 Enrolled Students

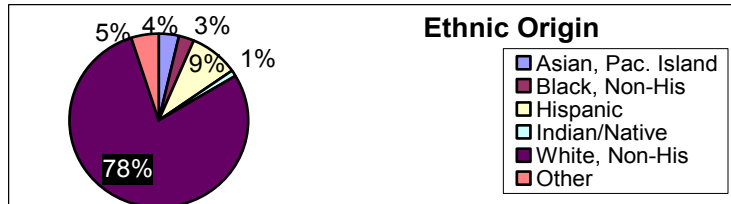
Degree Goal at ACC

AA, AS, AGS	2150
AAS	2647
Certificate	559
Unknown	2449



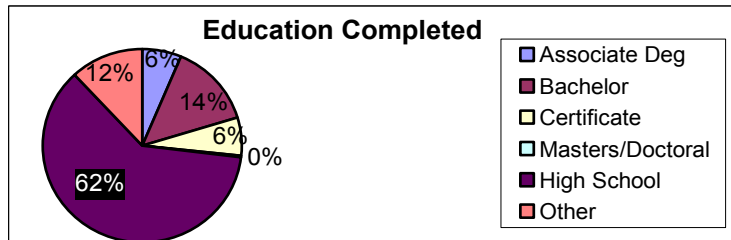
Ehtnic Origin

Asian, Pac. Island	276
Black, Non-His	212
Hispanic	695
Indian/Native	89
White, Non-His	6147
Other	387



Education Completed

Associate Deg	506
Bachelor	1074
Certificate	501
Masters/Doctoral	19
High School	4774
Other	932



Gender

Female	4947
Male	2830
Unknown	29



Employment

Full-time	3562
Part-time	1989
Unemployed	1957
Unknown	298



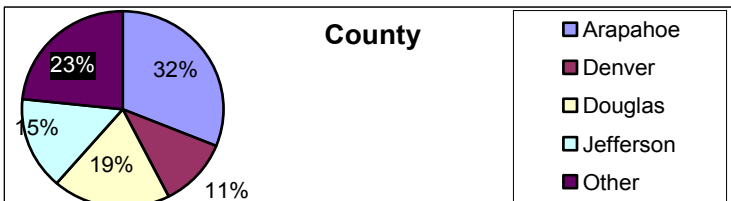
Admit Type

New student	4528
Readmit	319
Transfer	2959



County

Arapahoe	2423
Denver	892
Douglas	1474
Jefferson	1194
Other	1823

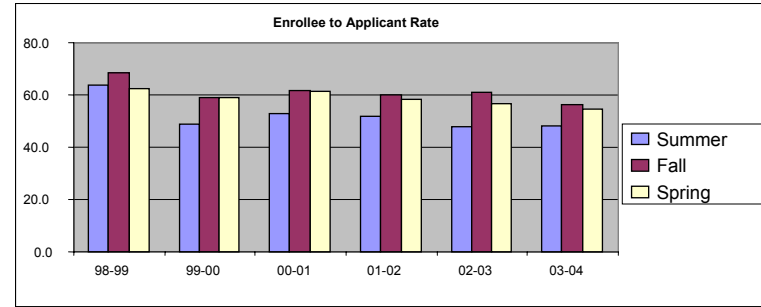


Applicant Yield Rate

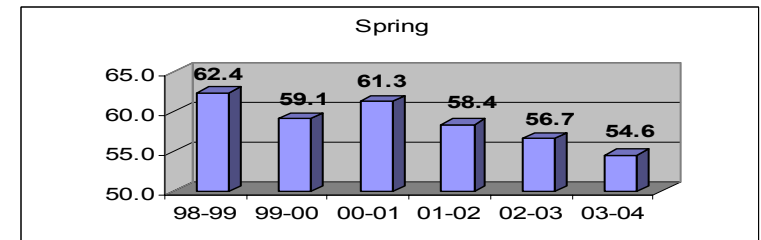
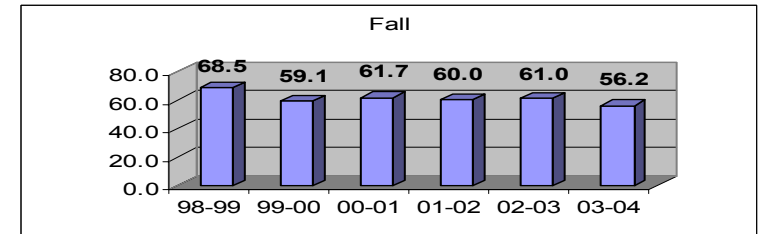
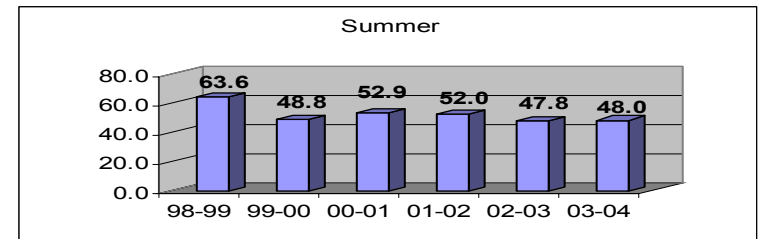
Compiled by Margaret Puryear, Office of Institutional Research

Percentage of students who applied and subsequently enrolled

	98-99	99-00	00-01	01-02	02-03	03-04
Summer	63.6	48.8	52.9	52.0	47.8	48.0
Fall	68.5	59.1	61.7	60.0	61.0	56.2
Spring	62.4	59.1	61.3	58.4	56.7	54.6



Date	Semester	Applied	Enrolled	Percent
Jun-98	99M	2613	1663	63.6%
Aug-98	99F	5265	3608	68.5%
Jan-99	99S	4534	2830	62.4%
Jun-99	00M	3487	1686	48.4%
Aug-99	00F	5984	3534	59.1%
Jan-00	00S	4933	2915	59.1%
Jun-00	01M	3126	1653	52.9%
Aug-00	01F	5913	3647	61.7%
Jan-01	01S	4587	2811	61.3%
Jun-01	02M	2850	1483	52.0%
Aug-01	02F	5414	3251	60.0%
Jan-02	02S	4521	2641	58.4%
Jun-02	03M	3466	1658	47.8%
Aug-02	03F	5776	3525	61.0%
Jan-03	03S	4565	2588	56.7%
Jun-03	04M	3601	1729	48.0%
Aug-03	04F	5801	3263	56.2%
Jan-04	04S	4348	2372	54.6%



The following numbers for Degrees/Certificates awarded are based on ACC Data. Numbers will not always match CCHE information.		# of awards	# of awards	# of awards	# of awards	# of awards	# of awards	# of awards
Degree	Major	97-98	98-99	99-00	00-01	01-02	02-03	03-04
ASSOCIATE OF APPLIED SCIENCE	ACCOUNTING	13	6	10	15	9	10	7
ASSOCIATE OF APPLIED SCIENCE	ADMINISTRATIVE ASSISTANT	7	1	4	2	2	5	6
ASSOCIATE OF APPLIED SCIENCE	ARCHITECTURAL TECHNOLOGY	5	3	2	8	6	3	2
ASSOCIATE OF APPLIED SCIENCE	AUTOMOTIVE SERVICE TECH-ATEC							
ASSOCIATE OF APPLIED SCIENCE	AUTOMOTIVE SERVICE TECH-ASEP			1				
ASSOCIATE OF APPLIED SCIENCE	AUTOMOTIVE SERVICE TECHNOLOGY	15	14	9	12	4	6	10
ASSOCIATE OF APPLIED SCIENCE	BUSINESS ADMINISTRATION	13	8	6	14	16	21	14
ASSOCIATE OF APPLIED SCIENCE	COMMUNICATION TECHNOLOGY	4	4	7	6	6	4	
ASSOCIATE OF APPLIED SCIENCE	COMPUTER INFORMATION SYSTEMS	13	10	17	21	10	9	11
ASSOCIATE OF APPLIED SCIENCE	COMPUTER NETWORK TECHNOLOGY					3	14	8
ASSOCIATE OF APPLIED SCIENCE	CONSTRUCTION SUPERVISION	1	1			2	1	1
ASSOCIATE OF APPLIED SCIENCE	CONVERGENT TECHNOLOGIES						7	4
ASSOCIATE OF APPLIED SCIENCE	CRIMINAL JUSTICE	11	20	7	6	8	3	5
ASSOCIATE OF APPLIED SCIENCE	ELECTRONICS ENGINEERING TECHNOLOGY	7	3	3	5	2	5	6
ASSOCIATE OF APPLIED SCIENCE	ENVIRONMENTAL & SAFETY TECH	2		3		2		
ASSOCIATE OF APPLIED SCIENCE	ENVIRONMENTAL & WASTE MGMT				1			
ASSOCIATE OF APPLIED SCIENCE	FINANCIAL SERVICES						1	2
ASSOCIATE OF APPLIED SCIENCE	GRAPHIC DESIGN & ILLUSTRATION	13	18	14	11	17	12	20
ASSOCIATE OF APPLIED SCIENCE	HEALTH INFORMATION TECHNOLOGY	4	2	9	8	9	9	8
ASSOCIATE OF APPLIED SCIENCE	INTERIOR DESIGN	47	39	37	34	37	31	36
ASSOCIATE OF APPLIED SCIENCE	INTERNATIONAL BUSINESS	3						
ASSOCIATE OF APPLIED SCIENCE	INVESTMENTS		1		1			
ASSOCIATE OF APPLIED SCIENCE	LEGAL SECRETARY	1		2				
ASSOCIATE OF APPLIED SCIENCE	MANAGEMENT	11	4	5	5	7	9	9
ASSOCIATE OF APPLIED SCIENCE	MARKETING	1	2	1				
ASSOCIATE OF APPLIED SCIENCE	MECHANICAL DESIGN & DRAFTING TECH	3	1	1				1
ASSOCIATE OF APPLIED SCIENCE	MEDICAL LABORATORY TECHNOLOGY	8	4	7	2	1	5	8
ASSOCIATE OF APPLIED SCIENCE	MEDICAL OFFICE TECHNOLOGY (aka MOA)	2	5	3	2	3	2	1
ASSOCIATE OF APPLIED SCIENCE	MORTUARY SCIENCE	7	19	10	21	14	30	21
ASSOCIATE OF APPLIED SCIENCE	NURSING	68	69	74	46	41	40	57

Degree	Major	97-98	98-99	99-00	00-01	01-02	02-03	03-04
ASSOCIATE OF APPLIED SCIENCE	OCCUPATIONAL THERAPY ASST	18	9	9	7	6		
ASSOCIATE OF APPLIED SCIENCE	PARALEGAL	19	21	10	17	21	24	17
ASSOCIATE OF APPLIED SCIENCE	PARAMEDIC		1					
ASSOCIATE OF APPLIED SCIENCE	PHYSICAL THERAPIST ASSISTANT	22	31	31	20	15	11	6
ASSOCIATE OF APPLIED SCIENCE	PN TO RN				13	18	14	14
ASSOCIATE OF APPLIED SCIENCE	TRAVEL & HOSPITALITY MGMT	4	10	9	4			
ASSOCIATE OF APPLIED SCIENCE	TRAVEL & TOURISM MANAGEMENT				1	4	1	4
ASSOCIATE OF ARTS		119	124	90	105	70	64	93
ASSOCIATE OF GENERAL STUDIES	BROADBAND					5	4	5
ASSOCIATE OF GENERAL STUDIES	ENGINEERING TECHNOLOGIES				1			
ASSOCIATE OF GENERAL STUDIES		50	61	61	66	46	32	48
ASSOCIATE OF SCIENCE		28	18	17	17	15	22	15
CERTIFICATE	ACTIVITY PROFESSIONAL TRAINING	1					4	3
CERTIFICATE	ADMINISTRATIVE SUPPORT SPECIALIST	4		4	7	5	4	7
CERTIFICATE	ARCHITECTURAL CONTRACTS & MATERIALS					1		
CERTIFICATE	ARCHITECTURAL DRAFTING	1	2		4	2	1	1
CERTIFICATE	AUTOMOTIVE SERVICE MGMT		1	1	2			
CERTIFICATE	AUTOMOTIVE SERVICE TECHNOLOGY	1	7	2	5	3	2	10
CERTIFICATE	BOOKKEEPING AND OFFICE		1	1	3	1	1	7
CERTIFICATE	BROADBAND				3	102		1
CERTIFICATE	BROADBAND DIGITAL MANAGEMENT						8	16
CERTIFICATE	BROADBAND TECHNICAL MANAGEMENT						99	90
CERTIFICATE	BROADBAND TELEPHONY						8	6
CERTIFICATE	BUILDING MATERIALS	1						
CERTIFICATE	C.N.A.	40	37	78	27	1		
CERTIFICATE	CISCO				3	4	1	1
CERTIFICATE	CLINICAL ASSISTANT					1	6	2
CERTIFICATE	COMMUNICATION TECHNOLOGY						2	1
CERTIFICATE	COMPUTER AIDED DRAFTING	2	1	2	11	7	8	11
CERTIFICATE	COMPUTER CRIME INVESTIGATIONS							1

Degree	Major	97-98	98-99	99-00	00-01	01-02	02-03	03-04
CERTIFICATE	COMPUTER GRAPHICS		1	4	7	14	10	9
CERTIFICATE	COMPUTER PROGRAMMING		5	8	10	6	4	1
CERTIFICATE	COMPUTER TECHNICIAN	12	20	15	9	10	8	3
CERTIFICATE	CONSTRUCTION ESTIMATING							1
CERTIFICATE	CONSTRUCTION MANAGEMENT	1						
CERTIFICATE	CONTEMPORARY BUSINESS							2
CERTIFICATE	CONTEMPORARY MANAGEMENT					25	8	12
CERTIFICATE	EARLY CHILDHOOD PROFESSIONS DIR			1	7	2	8	7
CERTIFICATE	EARLY CHILDHOOD PROFESSIONS GROUP			5	7	9	5	7
CERTIFICATE	ELECTRONICS ASSEMBLER						3	3
CERTIFICATE	ELECTRONICS ENGINEERING TECHNOLOGY	2	2	1	2	1	1	
CERTIFICATE	EMERGENCY MEDICAL TECHNICIAN	29	2			1	1	
CERTIFICATE	ENTREPRENEURSHIP			2	1			
CERTIFICATE	FINANCIAL SERVICES						2	1
CERTIFICATE	FIRE ACADEMY	48	82	42		58	27	
CERTIFICATE	FLIGHT ATTENDANT	8						
CERTIFICATE	GRAPHIC DESIGN & ILLUSTRATION	2	2		2	1	2	
CERTIFICATE	HAZARDOUS MATERIALS TECH				1	1		
CERTIFICATE	HUMAN RESOURCES MANAGEMENT					12	5	6
CERTIFICATE	HUMAN RESOURCES MANAGEMENT SPEC	2	3	4	3	3	5	3
CERTIFICATE	HUMAN SERVICE TECHNICIAN	1						
CERTIFICATE	ICD-9-CM/CPT CODING				13	9	7	4
CERTIFICATE	INTERIOR ARCHITECTURE							1
CERTIFICATE	INTL TRADE SPECIALIST	3						
CERTIFICATE	INVESTMENTS		1	1	1			
CERTIFICATE	LAW ENFORCEMENT ACADEMY	82	94	60	71	68	75	67
CERTIFICATE	LEGAL SECRETARY							2
CERTIFICATE	MARKETING	1	1	1				
CERTIFICATE	MARKETING SPECIALIST				1			

Degree	Major	97-98	98-99	99-00	00-01	01-02	02-03	03-04
CERTIFICATE	MECHANICAL DRAFTING	1						
CERTIFICATE	MEDICAL ADMIN ASST	3		5			1	3
CERTIFICATE	MEDICAL OFFICE TECHNOLOGY	3	5	2		1	1	2
CERTIFICATE	MGMT FOR PROF & TECH EMPLOYEES	2		1	3	4	1	1
CERTIFICATE	MICROCOMPUTER SPECIALIST	10	8	9	9	8	4	1
CERTIFICATE	NETWORK SPECIALIST					2		
CERTIFICATE	ORGANIZATIONAL BEHAVIOR					16	6	11
CERTIFICATE	PARALEGAL	13	20	22	18	17	16	20
CERTIFICATE	PHARMACY TECHNICIAN	10	6	5	14	2	19	24
CERTIFICATE	PHLEBOTOMY					16	19	17
CERTIFICATE	PRACTICAL NURSING							17
CERTIFICATE	PROJECT MANAGEMENT						11	7
CERTIFICATE	REFRIGERATION & AIR CONDITIONING	7	3					
CERTIFICATE	SECRETARIAL SCIENCE							
CERTIFICATE	SUPERVISION					23	11	7
CERTIFICATE	SUPERVISORY MANAGEMENT	1	1	1				
CERTIFICATE	TELECOMMUNICATIONS ENGINEERING				1		1	1
CERTIFICATE	TRAVEL AND TOURISM	20	19	10	11	11	9	5
CERTIFICATE	TRAVEL MARKETING & MGMT	3	3	1	1			
CERTIFICATE	VENDOR SERVICE TECHNICIAN						3	1
CERTIFICATE	WEB AUTHORIZING						1	
TOTAL		833	836	747	728	846	817	842

Where do our Students Transfer To?

Originating Institution	Receiving Institution											FISCAL YEAR UG TOTAL	
	ASC	CSM	CSU	FLC	Mesa	Metro	UCB	UCCS	UCD	UNC	USC		WSC
Two-Year Public Institutions													
ACC	11	4	50	4	11	247	42	6	103	39	4	7	528
AIMS	1	6	83	1	4	31	12	1	4	185	2	2	332
CCA	1	-	14	2	3	141	12	5	88	21	7	-	294
CCD	2	4	9	-	1	207	17	4	124	11	2	1	382
CMC	3	2	48	25	43	68	51	7	19	16	-	13	295
CNCC	4	-	8	2	21	15	2	-	1	4	1	1	59
FRCC	2	6	393	4	10	287	284	13	112	94	5	8	1,218
LCC	17	-	5	-	1	5	2	4	-	7	17	1	59
MCC	1	-	10	-	1	9	2	1	3	15	4	1	47
NJC	5	-	65	5	3	15	2	2	2	45	3	3	150
OJC	36	2	9	2	7	5	5	5	4	13	35	2	125
PCC	6	-	13	51	5	18	3	11	3	8	149	1	268
PPCC	9	2	37	5	4	16	17	361	7	15	48	8	529
PRCC	-	19	56	7	10	228	31	4	112	29	-	1	497
TSJC	27	-	2	3	4	9	2	11	1	8	17	-	84
Total Transfers from Two-Yr Publ Inst	125	45	802	111	128	1,301	484	435	583	510	294	49	4,867
% of Total Rec'd from Two-Yr Publ Inst	2.6%	0.9%	16.5%	2.3%	2.6%	26.7%	9.9%	8.9%	12.0%	10.5%	6.0%	1.0%	
% of Total Rec'd by Inst	47.5%	41.7%	31.6%	22.0%	15.8%	38.4%	22.7%	37.1%	33.7%	38.3%	52.4%	18.6%	
Four-Year Public Institutions													
ASC	---	1	11	1	5	34	2	17	4	17	14	-	106
CSM	1	---	13	1	2	19	19	3	14	4	4	1	81
CSU	7	-	271	14	40	160	60	54	76	86	27	7	802
FLC	4	5	60	-	20	46	30	16	20	9	6	3	219
Mesa	1	2	57	8	238	44	24	9	14	20	1	6	424
Metro	4	1	94	9	14	-	83	12	158	52	6	6	439
UCB	-	-	56	11	10	133	206	2	143	16	8	5	590
UCCS	1	-	60	7	3	20	36	60	38	15	4	-	244
UCD	-	7	38	1	2	142	84	2	66	8	1	2	353
UCHSC	-	-	-	-	-	-	-	-	1	-	-	-	1
UNC	8	3	93	5	27	188	60	54	67	233	16	5	759
USC	3	1	19	3	2	22	7	21	6	15	1	2	102
WSC	1	-	25	4	18	32	9	11	11	14	4	-	129
Total Transfers from Four-Yr Publ Inst	30	20	797	64	381	840	620	261	618	489	92	37	4,249
% of Total Rec'd from Four-Yr Publ Inst	0.7%	0.5%	18.8%	1.5%	9.0%	19.8%	14.6%	6.1%	14.5%	11.5%	2.2%	0.9%	
% of Total Rec'd by Inst	11.4%	18.5%	31.5%	12.7%	47.1%	24.8%	29.0%	22.2%	35.7%	36.7%	16.4%	14.1%	
Code not reported	5	10	904	-	11	145	998	465	473	-	150	3	3,164
Unknown Code	103	33	31	329	289	1,104	33	13	56	332	25	174	2,522
Total w/ Unknown/Not Reported Code	108	43	935	329	300	1,249	1,031	478	529	332	175	177	5,686
% of Total Rec'd by Inst	41.1%	39.8%	36.9%	65.3%	37.1%	36.8%	48.3%	40.7%	30.6%	24.9%	31.2%	67.3%	
TOTAL	263	108	2,534	504	809	3,390	2,135	1,174	1,730	1,331	561	263	14,802

**Two-year institution total based on transfers from public two-year to public four-year institution.

Institutional totals based on students reported with registration status = transfer (3) and admission status = enrolled (3).

Source: SURDS Undergraduate Applicant Files for FY2003; CCHE Projects\Transfers\UAF2003EnrolledTransfers.xls

		02-03 to 03-04 Site/Mode Comparison												
		The below FTE numbers include BOTH countable and non-countable FTE EXCEPT NCTI.												
MODEv	SITE>	03-04 ACC Main Campus (AC)	03-04 Art & Design Center (AD)	03-04 Colo.Com puter Center (CO)	03-04 Employee Dev Acad or Cr (EC)	03-04 Enhanced Labs (ED)	03-04 High School (HS)	03-04 Triad (TR)	03-04 UCC (UC)	03-04 CCC Online (CC)	03-04 Misc. off- site Location (S1)	03-04 TOTALS	02-03 TOTALS	%change from 02-03 to 03- 04
FY 04														
	Traditional (blank)	5260.21	909	65.27			33.06	137.48	156.75		186.09	6748.26	6659.85	1%
	Accelerated (AC)	386.12	13.6					92.87	10.27			502.86	428.76	17%
	HS contract-taught at HS (C2)											5	13.47	
	Additional 3rd party costs (C5)			25.93								25.93	133.91	-81%
	Computer Lab (CL)	118.47						9.67	4.2			132.34	289.89	-54%
	Clinic (CN)	1.33									140.21	141.54	109.52	29%
	Coop/Internship (CP)	16.47						1.8			43.68	61.95	76.59	-19%
	Flex and open registration (FL)	106.4						6.6	9.4			122.4	110.93	10%
	Hybrid (HY)	443.33	10.4					3.2	44		0.47	501.4	272.78	84%
	Individualized Computer Lab (IC)											0	12.56	-100%
	Independent Study (IS)	20.33	3.07	0.07				0.13			0.2	23.8	46.57	-49%
	Multi-Media (MM)											0	2.8	
	Private Lessons (PL)	29.06										29.06	24.74	17%
	Prior Learning (PR)		0.54								9.63	10.17	5.01	103%
	Self-paced (SP)	111.87						0.93				112.8	150.13	-25%
	Telecourse (TL)	62.4										62.4	74.2	-16%
	Web based (WW)	881.1	44.2					10.94		547.88	1.2	1484.92	1085.16	37%
	03-04 Totals:	7437.09	980.81	91.27	0	0	38.06	263.62	224.62	547.88	381.48	9964.83	9496.87	5%
	02-03 Totals:	7011.51	1022.4	22.68	7.21	0	38.51	310.04	208.06	381.79	494.67			
	% Change from 02-03 to 03-04:	6%	-4%	302%	-100%		-1%	-15%	8%	44%	-23%			
	NCTI (NC) - not included in above numbers											2476.2	3028.5	-18%
	Other non-countable FTE (are included in above numbers)											197.67	106.6	85%
FY 03														
MODEv	SITE>	02-03 ACC Main Campus (AC)	02-03 Art & Design Center (AD)	02-03 Colo.Com puter Center (CO)	02-03 Employee Dev Acad or Cr (EC)	02-03 Enhanced Labs (ED)	02-03 High School (HS)	02-03 Triad (TR)	02-03 UCC (UC)	02-03 CCC Online (CC)	02-03 Misc. off- site Location (S1)	02-03 TOTALS		
	Traditional (blank)	5190.61	900.43	19.82	7.21		25.04	180.08	157.86		178.8	6659.85		
	Accelerated (AC)	334.16	3.6					84.8	6.2			428.76		
	HS contract-taught at HS (C2)						13.47					13.47		
	Additional 3rd party costs (C5)			2.2							131.71	133.91		
	Computer Lab (CL)	254.81						22.81	12.27			289.89		
	Clinic (CN)	7.8									101.72	109.52		
	Coop/Internship (CP)	20.15						2.33			54.11	76.59		
	Flex and open registration (FL)	107.9						1.31	0.39		1.33	110.93		
	Hybrid (HY)	231.41	7.4					2.2	29.07		2.7	272.78		
	Individualized Computer Lab (IC)	12.56										12.56		
	Independent Study (IS)	21.72	4.5					4.32			16.03	46.57		
	Multi-Media (MM)	2.8										2.8		
	Other (OT)											0		
	Private Lessons (PL)	22.34									2.4	24.74		
	Prior Learning (PR)										5.01	5.01		
	Self-paced (SP)	77.34	66.47					5.39	0.07		0.86	150.13		
	Telecourse (TL)	74.2										74.2		
	Web based (WW)	653.71	40	0.66				6.8	2.2	381.79		1085.16		
	Totals:	7011.51	1022.4	22.68	7.21	0	38.51	310.04	208.06	381.79	494.67	9496.87		
	NCTI (NC) - not included in above numbers											3028.5		
	Other non-countable FTE (are included in above numbers)											106.6		

What times do courses at ACC start?

Number of sections per start time for Fall 03-04 (04F). Includes sites: Main, Art & Design, Triad, UCC

	M	MTW	MTWR	MTWRF	MW	MF	T	TR	W	WRF	R	F	S	TOTALS
7:00am					2			2		5				9
7:30am	1	7					1		1		3			13
8:00am	2				3		1	6		2	1	1	7	23
8:15am					1									1
8:30am	7		1	1	25	2	12	31	15		9	5	3	111
8:35am					1									1
9:00am	1			3	11		4	6	2		2	6	20	55
9:30am	4				4		1	7	3			6	7	32
9:45am								1						1
9:55am								1						1
10:00am	7				28		8	35	6		7	4	1	96
10:20am					1									1
10:30am	1		1		5			7					3	17
10:45am								1						1
11:00am					2		1	3	2		1			9
11:10am	1													1
11:20am								1						1
11:30am	4		1		24		1	28	5		1			64
11:50am					1								1	2
12:00pm	1				6		1	5	1		2		3	19
12:25pm					1									1
12:30pm	4				4		1	7	5		5	2		28
12:45pm					2			1						3
1:00pm	10		1	7	34		8	27	8		5		1	101
1:10pm											1			1
1:15pm							1							1
1:30pm	1													1
2:00pm		5			6		1	2	2		3	2		21
2:30pm	1				4		1	3	1					10
2:55pm					1			1						2
3:00pm					2			5			1			8
3:30pm	3				1		3	2	3		1			13
4:00pm	2				8		2	10	3					25
4:30pm	1											4		5
5:00pm	2				7		4	4	3		1	2		23
5:15pm					1				1					2
5:30pm	11				17		15	14	18		10			85
5:45pm								1						1
6:00pm	14		1		20		29	21	22		18	2		127
6:15pm								2						2
6:25pm					1									1
6:30pm	4				3		3	3	5		2			20
6:45pm											1			1
7:00pm	10				9		16	8	14		7			64
7:20pm					4			2						6
7:25pm					1									1
7:30pm							1	2	3					6
8:00pm							2	1	2		2			7
8:55pm								1						1
TOTALS	92	12	5	11	240	2	117	251	125	7	83	34	46	1025

Number of class sections per day:	Number of class sections starting per time slot:
M 362	7am-8:55am 158
T 396	9am-10:55am 204
W 400	11am-12:55pm 128
R 357	1pm-2:55pm 137
F 54	3pm-4:55pm 51
S 46	5pm-6:55pm 262
SU 0	7pm-8:55pm 85

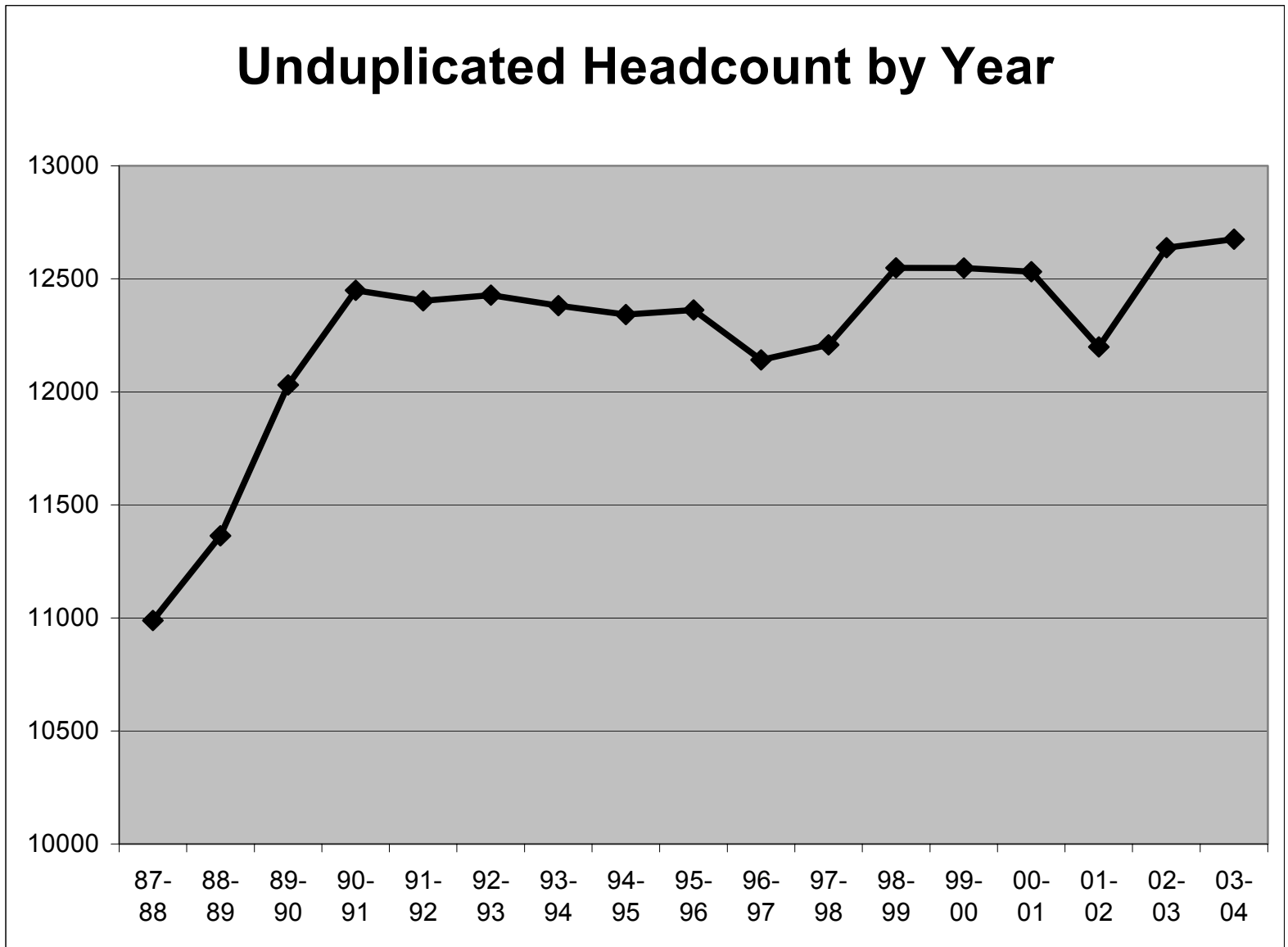
Highest Time Slots in rank order:

Above shaded boxes indicate highest time slots.

TR	10am	35	MW	11:30am	24	T	7pm	16
MW	1pm	34	W	6pm	22	W	8:30am	15
TR	8:30am	31	TR	6pm	21	T	5:30pm	15
T	6pm	29	MW	6pm	20	TR	5:30pm	14
MW	10am	28	S	9am	20	M	6pm	14
TR	11:30am	28	W	5:30pm	18	W	7pm	14
TR	1pm	27	R	6pm	18	TOTAL		485
MW	8:30am	25	MW	5:30pm	17	47% of class sections fall in these time slots.		

Academic Year	Head count
87-88	10989
88-89	11363
89-90	12030
90-91	12449
91-92	12403
92-93	12428
93-94	12381
94-95	12342
95-96	12362
96-97	12141
97-98	12208
98-99	12549
99-00	12547
00-01	12532
01-02	12199
02-03	12638
03-04	12675

Unduplicated Headcount by Year



Service Area High School Conversion Rates

HS's	District	HS Class of 98			HS Class of 99			HS Class of 00			HS Class of 01			HS Class of 02			HS Class of 03		
		Graduates Completers	Enrolled Fall 98 (99F)	Conversion Rate (Enrolled/ Grads)	Graduates Completers	Enrolled Fall 99 (00F)	Conversion Rate (Enrolled/ Grads)	Graduates Completers	Enrolled Fall 00 (01F)	Conversion Rate (Enrolled/ Grads)	Graduates Completers	Enrolled Fall 01 (02F)	Conversion Rate (Enrolled/ Grads)	Graduates Completers	Enrolled Fall 02 (03F)	Conversion Rate (Enrolled/ Grads)	Graduates Completers	Enrolled Fall 03 (04F)	Conversion Rate (Enrolled/ Grads)
Arapahoe, Heritage, Littleton, Littleton Options	Littleton 6	1113	82	7%	1097	112	10%	1091	82	8%	1159	107	9%	1223	99	8%	1234	99	8%
Chaparral, DC Oakes, Douglas Cty, Eagle, Highlands Rch, Ponderosa, Thunderridge	Douglas Cty RE1	1294	110	9%	1403	94	7%	1510	92	6%	1722	101	6%	1898	142	7%	1942	155	8%
Chatfield, Columbine, Conifer, Dakota Ridge	Part of Jefferson Cty R1 (pull grad rates by school)	not available	103	n/a	not available	106	n/a	1456	75	5%	1372	70	5%	1451	96	7%	1484	113	8%
Cherry Creek, Grandview	Part of Cherry Creek 5 (pull grad rates by school)	not available	24	n/a	not available	23	n/a	827	29	4%	799	27	3%	860	17	2%	1427	32	2%
Englewood, Colorado's Finest	Englewood 1	261	26	10%	265	14	5%	256	23	9%	298	22	7%	290	23	8%	245	23	9%
Sheridan	Sheridan2	70	3	4%	82	7	9%	108	1	1%	128	6	5%	76	3	4%	91	2	2%
Total Service Area			348			356		5248	302	6%	5478	333	6%	5798	380	7%	6423	424	7%
Other	Other		272			216			226			210		312					
dates used in HS_grads																			
term		Fall 1998 (99F)			Fall 1999 (00F)			Fall 2000 (01F)			Fall 2001 (02F)			Fall 2002 (03F)			Fall 2003 (04F)		
date 1		199709			199809			199909			200009			200109			200209		
date 2		199808			199908			200008			200108			200208			200308		

Market Penetration Rate – FY 03-04
Office of Institutional Research
Compiled by Margaret Puryear

Comparing 03-04 and 02-03 to the same population pulled from the 2000 Census

Zip Code Area	General Location	Number of people - 6 years old and above 2000 Census	# of Students enrolled in Community Ed	30-04 % Market Penetration	02-03 % Market Penetration	Number of people - 18 years old and above 2000 Census	# of Students enrolled in Credit Courses	03-04 % Market Penetration	02-03 % Market Penetration
80104	Castle Rock	26850	65	0.24%	0.36%	20919	330	1.58%	2.04%
80110	Englewood/Sheridan	40492	189	0.47%	0.83%	33757	486	1.44%	1.84%
80111	Greenwood Village	24222	258	1.07%	1.37%	18281	293	1.60%	1.71%
80112	Castlewood	20203	216	1.07%	1.48%	15715	354	2.25%	2.00%
80116	Parker	3545	9	0.25%	0.56%	2787	61	2.19%	2.15%
80118	Larkspur	3787	17	0.45%	0.13%	3015	39	1.29%	1.03%
80120	Littleton	26861	556	2.07%	2.42%	22155	651	2.94%	3.24%
80121	Littleton/GrnWd Vill.	16950	283	1.67%	1.89%	13461	290	2.15%	2.16%
80122	Southglenn	29681	462	1.56%	1.92%	23129	596	2.58%	2.56%
80123	BowMar	38522	648	1.68%	2.01%	31444	797	2.53%	2.67%
80124 /80130	Lonetree	68203	379	0.56%	0.66%	8821	451	5.11%	5.67%
80125	Roxborough	4899	123	2.51%	3.27%	3934	134	3.41%	3.71%
80126 /80129	Highlands Ranch	73102	769	1.05%	1.16%	46199	1020	2.21%	2.24%
80127	Littleton	35437	526	1.48%	1.72%	26374	527	2.00%	2.18%
80128	Columbine	31447	401	1.28%	1.76%	24519	627	2.56%	2.70%
80134	Stonegate/Pinery	26819	111	0.41%	0.53%	20057	599	2.99%	2.83%
80135	W. of Castle Rock	3433	27	0.79%	0.73%	2759	54	1.96%	2.10%
80236	Den/Sheridan/Englewood	14673	44	0.30%	0.37%	12111	159	1.31%	1.34%
80138	Parker	18162	37	0.20%	0.28%	14052	326	2.32%	2.07%
80235	Denver	6561	16	0.24%	0.44%	5530	81	1.46%	1.61%
80425	So. Jefferson Co.	160	0	0.00%	0.00%	133	1	0.75%	4.51%
80433	Jefferson Co.	7665	13	0.17%	0.20%	6104	39	0.64%	0.74%
80465	So. Jefferson Co.	13892	46	0.33%	0.25%	10998	110	1.00%	1.03%
80470	So. Jefferson Co.	3166	4	0.13%	0.06%	2541	17	0.67%	0.35%
Totals		538732	5199	0.97%	1.18%	368795	8042	2.18%	2.29%

The total counts for Zip Codes 80235 and 80236 were included even though only half of the zip code area is in the service area
80129 and 80130 numbers are included in the totals of the zip code they are listed by

Student Satisfaction Survey Highlights Fall 2003
Courtesy of Suzanne L. Larsh, Ph.D.

For the complete Student Satisfaction Survey report, please visit <http://www.arapahoe.edu/aboutacc/ir/SSS03.pdf>

HIGHLIGHTS

- ❖ Students planning to obtain a degree or certificate have a significantly higher intent of completing their education at ACC. It follows that retention rates at ACC will increase as more students are advised into declared degree programs or other structured programs of study (Ref: pp. 5-6).
- ❖ Sixteen instructional components were measured on two five-point Likert scales; one scale for importance, one for satisfaction. Essentially, students judged all the instructional components to be of importance. Average satisfaction was 4.17 (Ref: p. 8).
- ❖ All students enjoy the small class sizes at ACC (Ref: pp. 7-8).
- ❖ Convenience (or lack thereof) of scheduled courses was the instructional component of highest importance (with relatively lower satisfaction), and garnered the largest set of written-in comments (Ref: pp. 7-9, 16-17, 19-20, 22, 24-26, 29-30, 60-61).
- ❖ There is a consistent and significantly lower level of satisfaction for the male population for both instructional and service components (Ref: pp. 9-13, 36-38).
- ❖ There is a clear trend for evening students to be more satisfied with instruction than their daytime peers (Ref: pp. 13-15).
- ❖ Generally, ACC's American Indian/Alaska Native and Black (non-Hispanic) students are more satisfied with both the instructional and service components of their educational experience than other ethnic/racial groups (Ref: pp. 15-18, 40-45).
- ❖ University Center at Chaparral (UCC) students reported the highest overall satisfaction with both instructional and service components of the College (Ref: pp. 18-21, 45-48).
- ❖ Faculty academic expectations of students seem right on target (Ref: p. 27).
- ❖ First semester students have more doubts about remaining at ACC than students who have attended ACC for more than one semester. Continued focus on support to first semester students seems in order (Ref: pp. 28-30).
- ❖ Students continue (over time) to be impressed with the faculty's level of knowledge and their respect for student. (Ref: p. 30).

- ❖ Twenty-eight service components were measured on two five-point Likert scales; one scale for importance, one for satisfaction. The average satisfaction for service components was 3.97 on a 5 point scale (Ref: p. 32).
- ❖ Of the service-area components, students ranked "ability to register for classes with few conflicts" of highest importance (Ref: pp. 31-32).
- ❖ Campus maintenance received the highest satisfaction rating of all service statements (and all instructional components as well) (Ref: pp. 31-32).
- ❖ Adequate parking is ranked second in importance for students and has a significantly low level of satisfaction (Ref: pp. 32-33). Parking seems to be less of a problem for evening and weekend students (Ref: pp. 38-39).
- ❖ A cluster of services that could potentially enhance the College experience for a majority of students received relatively low satisfaction ratings (Ref: pp. 32-33).
- ❖ A cluster of services that could potentially enhance the College experience for a majority of students are "known about" but not used by a sizeable number of students (Ref: pp. 34-35).
- ❖ Most ethnic/race groups are about equally well satisfied with most of the top 14 ranked Services (Ref: pp.41-43).
- ❖ Almost half of the minority sample knew about and didn't use services targeted for minority students, or did not know about these services (Ref: pp. 42-45).
- ❖ Satisfaction levels with most of the relatively important services holds up well over time (Ref: pp. 49-51).
- ❖ Satisfaction with parking and the availability of child care drops considerably after the first semester (Ref: pp. 50-51).

Arapahoe Community College -- Career Center
2002-2003 GRADUATE EMPLOYMENT STATUS SURVEY
 Compiled courtesy of Suzanne Larsh

Data compiled July, 2003 for students graduating May 2000 - April 2002	Data compiled June, 2004 for students graduating May 2001 - April 2003
From list of 647 students, 339 students responded. Percentages that follow are based on the 339 respondents.	From list of 698 students, 394 students responded, a response rate of 56%.
Of the 339, 181 (53%) earned a degree	Of the 394, 161 (41%) earned a degree
Of the 339, 151 (45%) earned a certificate	Of the 394, 233 (59%) earned a certificate
Of the 339, 7 (2%) did not respond to this question	

The 2004 data is comprised of a higher percentage of certificate students responding. This should be considered when comparing 2004 data to 2003 data.

1. Which of the following best describes your current situation? Are you...

	2003	2004
Employed full-time/part-time in a job related to your ACC training	72%	59%
Employed full-time/part-time in a job <i>not</i> related to your ACC training	18%	23%
Unemployed, looking for a job	6%	12%
Unemployed, not looking for a job	4%	5%

The 2004 data relating to student employment rates are generally less favorable than the 2003 data. The differences may be a result of different sample compositions, a less favorable job market, and/or factors related to student training or preparedness to enter the job market.

2. If you are employed, please complete the following:

2003: Average hourly wage for all respondents: \$18.06	2004: Average hourly wage for respondents employed in a job related to their ACC training: \$19.16
Minimum: \$5.40 Maximum: \$50.00	Minimum: \$8.50 Maximum: \$50.00

Wage data are slightly higher if only wages of students employed in chosen field are averaged.

Have you been continuously employed since graduating from ACC?

2003: Yes 265 (78%) No 63 (19%) No response: 11 (3%)

2004: Yes 304 (77%) No 69 (18%) No response: 21 (5%)

(You can mark "Yes" if you have had more than one job, or if you were employed before you graduated)

Continuous employment rate remained the same.

3. Are you continuing your education at this time?

2003: Yes 125 (37%) No 209 (62%) No response: 4 (1%)

2004: Yes 149 (38%) No 239 (61%) No response: 6 (1%)

Continuing education rate remained the same.

4. Are you active duty military?

2003: Yes 5 (1%) No 323 (99%) Full-Time 3 Part-Time 4

2004: Yes 3 (1%) No 391 (99%)

(Data entry did not include FT/PT choices.)

The military duty rate remained the same.

5. Would you say that the skills and education you received at ACC helped you to get a job, or helped you in your current job?

	2003: all respondents	2004: former students employed in a job related to their ACC training only:
Yes	277 (82%)	151 (65%)
No	52 (15%)	52 (22%)
No response	10 (3%)	17 (7%)

A somewhat less positive response in 2004 when asked only of those students employed in their chosen field.

6. Would you say that your ACC program met your educational goals (was it what you expected?)

2003: all respondents Yes 315 (93%) No 16 (5%) No response: 8 (2%)

2004: all respondents Yes 362 (92%) No 31 (8%) No response: 1 (<1%)

Responses remained the same.

**Graduate Follow-up
Survey administered 6-12 mos post-graduation**

VE 135 FY02 FY03 COMPARISON

EMPLOYER RESPONSES Please rate your employee (1=Poor, 2=needs improvement, 3= Competent, 4= Good, 5= Excellent)

	Oral Communication			Written Communication			Technical Literacy			Professionalism			Ability to work with others			Problem Solving			Overall Competency		
	2002	2003	% Change	2002	2003	% Change	2002	2003	% Change	2002	2003	% Change	2002	2003	% Change	2002	2003	% Change	2002	2003	% Change
Mean	4.17	4.19		4.03	4.20		4.14	4.37		4.25	4.24		4.44	4.12		4.16	4.10		4.22	3.98	
Std Dev	0.66	0.73		0.84	0.73		0.77	0.85		0.85	0.82		0.81	0.75		0.76	0.80		0.63	0.79	
Minimum	3	1		2	1		2	1		2	2		2	1		2	2		3	2	
Maximum	5	5		5	5		5	5		5	5		5	5		5	5		5	5	
Count	64	91		63	92		64	92		64	92		64	92		64	89		64	90	
Poor	0	1%	+1%	0	1%	+1%	0	0	no change	0	0	no change	0	1%	+1%	0	0	no change	0	0	no change
Needs Improvement	0	1%	+1%	5%	2%	-3%	2%	2%	no change	5%	2%	-3%	3%	0	-3%	2%	3%	+1%	0	4%	+4%
Competent	14%	9%	-5%	19%	15%	-4%	18%	11%	+7%	12%	17%	+5%	11%	16%	+5%	17%	17%	no change	11%	18%	+7%
Good	55%	55%	no change	44%	39%	+5%	44%	30%	-14%	36%	35%	-1%	25%	50%	+50%	45%	45%	no change	56%	52%	-4%
Excellent	31%	34%	+3%	32%	42%	+10%	36%	56%	+20%	47%	46%	-1%	61%	-33%	-28%	36%	35%	-1%	33%	26%	-7%

No substantial change in Oral Communication Skills

An increase in Written Communication Skills, and more employer agreement in average skill level

A split away from "Good" levels of Technical Literacy Skills toward higher or lower levels

No substantial change in Professionalism

A decrease in Ability to Work with Others from "Excellent" level to mid-scale levels

No substantial change in Problem Solving

An increase in Overall Competency, but less employer agreement in average competency level

Ranked Averages: (highest to lowest)

2002 Data

Ability to work with others	4.44
Professionalism	4.25
Overall Competency	4.22
Oral Communication	4.17
Problem Solving	4.16
Technical Literacy	4.14
Written Communication	4.03

2003 Data

Technical Literacy	4.39
Professionalism	4.24
Written Communication	4.20
Oral Communication	4.19
Ability to work with others	4.12
Problem Solving	4.10
Overall Competency	3.98

No apparent trend in ranked averages, so far this data seems to fluctuate from year to year.

**Office of Institutional Research
Credit Hours by Prefix (credits.fex)**

Note: below credits include ALL student enrollments including non-countable for state reimbursement.

Prefix	99-00		00-01		01-02		02-03		03-04	
	Non-resident	Resident	Non-resident	Resident	Non-resident	Resident	Non-resident	Resident	Non-resident	Resident
AAA					36	290	37	251	29	212
ACC	164	2287	231	2106	274	2693	251	3145	248	3190
AIR									0	4
ALH	72	921	118	1234	147	1400	147	2568		
ANT	42	438	24	378	30	492	45	705	30	1026
APT	0	335	0	333	9	174	0	122	0	232
ARA									0	51
ARC	42	985	31	1218	39	1113	17	938	12	1161
ARM	0	2								
ART	443	4795	258	4318	268	5312	108	5536	148	4788
ASE									41	1773
ASL	0	135	16	117	10	130	0	140	15	290
ASP	0	90	10	60	10	20				
AST	68	1196	116	1248	124	1336	104	1630	68	1938
ATC	29	603	55	629	58	487	58	855	0	373
ATH							3	83	2	51
AUT	50	913	74	801	91	989	49	1184	1	268
BIO	366	4582	329	4518	343	5325	392	8835	691	10056
BTE	18	825	54	738	27	830	10	813	22	524
BUS	540	2905	330	3021	348	3039	756	3306	735	3384
CAD	42	1368	75	1539	45	1461	52	1537	20	1663
CAI	4	155	9	113	0	44	0	2		
CAR									0	145
CBT	56	140	0	49	7	14	0	105		
CCN									2	98
CHE	195	1255	235	1410	115	1295	110	1715	120	2181
CIS	689	12861.5	938	12269	503	9616	352	6265	564	4241
CNA	65	595	15	635						
CNG							6	60	353	2179
CNT			9	48	12	36	9	256	15	15
COM									0	39
CRJ	250	2412	73	2808	55	3087	74	3587	103	3655
CSC	58	947	146	1914	57	1870	55	1412	54	1094
CTC	119212	2150	47769	1210	48377	602	33028	378	29035	196
CUA									0	95
CWB					0	28	8	146	15	168
DRT									0	15
ECG									15	1557
ECG	2	72								
ECO	423	1899	273	1701	195	2169	159	2610	156	2361
ECP	21	882	26	938	42	1219	66	1332		
EDU	8	198	7	273	62	1988	14	426	0	277
EGG	3	104	0	36	1	9	5	74	3	46
ELT	36	519	15	624	63	694	10	651	8	747
EMS	380	3214	729	3693	369	3645	65	4032	65	3708
ENG	554	8525	459	8400	394	8306	429	9991	420	10443
ESL	186	114	186	63	114	102	108	123	63	102
EST	0	140								
FIN	9	189	16	257	9	303	6	309	9	412
FIR	257	678	114	972	152	969				
FOS	19	227	3	184	0	24	0	64		

	99-00		00-01		01-02		02-03		03-04	
FRE	24	299	18	373	18	371	3	301	10	446
FST							58	580		
GDI	84	2073	139	2235	140	1990	107	1980	17	1841
GED	1	64	2	79	2	98	0	24		
GEO	69	648	39	591	33	735	27	924	45	1491
GEY	48	368	12	180	12	290	24	389	20	388
GIS									0	42
HIS	126	2117	204	2007	153	2172	105	2640	177	3357
HIT	17	401	23	791	74	805	68	981	87	1233
HON	0	21	0	30	0	24	0	30		
HOS	0	3								
HPR									120	1966
HUM	54	768	36	753	51	816	72	975	24	1038
HUP							0	63	2	92
HWE									49	1563
IND	146	4237	81	3767	42	4244	100	4511	116	4792
INV	0	237	15	225	6	216	9	204	3	123
JOU	0	114	3	133	6	108	0	98	6	177
JPN	49	107	10	195	15	493	18	443	13	562
LAT							0	87	0	170
LAW	15	2091	54	2070	63	2106	39	2295	9	210
LIT	54	795	27	841	45	972	18	925	45	1158
MAN	780	1417	1632	1473	2790	1818	2419.5	1832.5	2079	1922
MAR	69	858	39	885	81	822	7257	1008	5295	972
MAS	0	9								
MAT	807.5	10998.5	738	11667.5	476	12635	511	13134	449	14403
MDT	0	21	0	10	0	7	0	25		
MET	0	15								
MLT	42	339	2	310	10	533	0	923	6	767
MME	0	33	3	30	0	27	6	36		
MOR	386	425	393	337	700	266	754	229	711	723
MOT	6	219	4	474	18	588	26	773	26	1026
MTE			0	9						
MUS	110	918	104	830	30	1221	56	1374	51	1647
NET	184.5	1863.5	334	2204	101	1505	52	917	0	29
NUA					15	843	30	1012	6	1003
NUR	20	4012.33	31	3544.5	45	3366.5	61	3877	74	4503
NUT					6	30	18	63	9	63
OTA	12	368	0	373	0	174				
PAM	760	1920	280	480	106	1014	0	1690	0	624
PAR									45	2139
PED	125.5	1551.5	79	1828.5	67	1901.5	66.5	1904	66	1775.5
PER									0	45
PHI	297	1545	177	1410	108	1695	99	2164	111	2256
PHO									3	822
PHR	3	27	7	56	3	20	2	26		
PHT	31	456	7.5	757.5	4	673.5	14	1140	0	1165.5
PHY	98	577	125	653	42	574	74	866	67	904
POS	105	832	105	910	81	947	69	1359	69	1671
PSY	333	4333	240	3961	231	4697	309	6548	363	6125
PTA	233	725	92	587	117	487	120	384	580	337
REA	22	1186	38	1227	41	1452	86	1807	93	1927
REE	0	618	14	600	0	899	11	1049	25	705
SOC	120	1684	72	1428	96	1647	114	2526	96	2217
SPA	39	1816	110	1848	73	2097	65	2306	83	2416
SPE	274	2638	261	2357	204	3037	156	3342	147	3369

	99-00		00-01		01-02		02-03		03-04	
STS	80	365	74	441	0	30				
TEC									0	12
THE	12	249	12	276	15	225	6	324	6	389
TRA	143	740	78	632	78	616	84	435	51	265
WFD									166	373
Total	130082.5	116758.3	58457.5	115724	58584	122398.5	49647	135709.5	44482	142002
Total all Credits (res + non-res)	246840.8		174181.5		180982.5		185356.5		186484	

Environmental Scan

**State-by-State Profile of Community Colleges
6th Edition
American Association of Community Colleges**

Colorado

Shortfalls in state revenue during FY2003 forced the Colorado Community College System to shift more of its funding burden to student tuition. When the fiscal year began in July 2002, 62% of the system's funds came from the state. After losing \$15.1 million in a 10.8% rescission, the state's share dropped to 60% of the system's costs and the tuition share rose from 38% to 40%. Another rescission, however, was considered likely for late spring as lawmakers work to meet Colorado's constitutional requirements for a balanced annual budget. Hopes for a slight increase in general fund appropriations for FY2004 were dashed when revenue shortfalls were steeper than expected.

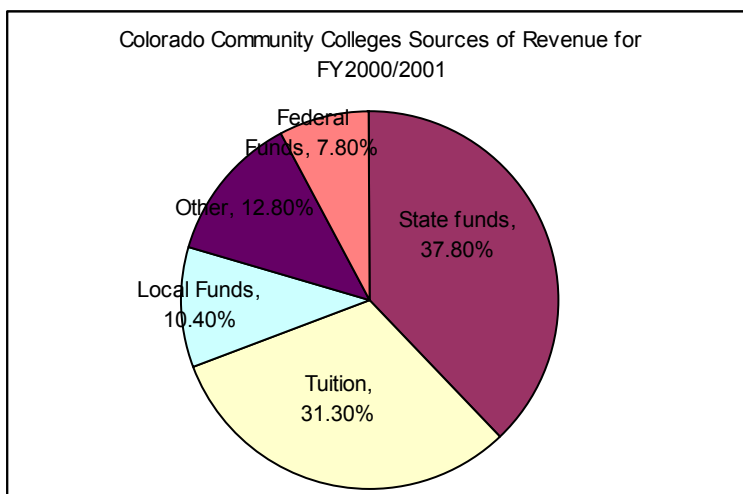
In the midst of the state's fiscal crisis, legislative leaders pushed a public higher education restructuring plan endorsed by the governor. The "opportunity stipends" legislation was among the key recommendations made by the governor's Blue Ribbon Panel on Higher Education in January 2003.

As proposed, the opportunity stipends will subsidize tuition for individual Colorado residents up to 140 credits, which proponents expect will significantly increase the percentage of state residents who pursue postsecondary education opportunities. Currently, the Colorado Commission on Higher Education predicts the community college system will experience a 25% reduction in tuition income. The state had not yet resolved how it would bear the additional fiscal impact of the opportunity stipends when the bill began working its way through three legislative committees in March 2003.

The community colleges of Colorado are the fastest growing segment of higher education in the state, accounting for 60% of all freshmen and sophomores enrolled in public higher education institutions. In addition to 13 community colleges, the system provides career and technical programs in 150 school districts and at 7 postsecondary institutions.

Colorado ranked 36th in per capita state and local appropriations for community colleges: 1999-2000.

State-by-State Profile of Community Colleges, 6th Edition, Colorado, cont.



Student Characteristics

Gender		
	Male	43%
	Female	57%
Attendance Status		
	Full-time	29.30%
	Part-time	70.70%
Race/Ethnicity		
	African American	4.70%
	Asian/Pacific	2.80%
	Hispanic	14%
	Native American	1.50%
	White	71.30%
	Other	5.80%

Average Faculty Salary

Public 2-year	\$38,583
Public 4-year	\$54,947
Independent 4-year	\$55,702

Tuition and Family Income

Average annual tuition (including fees)	
Public 2-year	\$1,655
Public 4-year	\$8,360
Median income, family of 4	\$66,625
Tuition as a % of family income	
Public 2-year	2.50%
Public 4-year	12.50%

Gross State Product (in billions)

Amount	\$168.00
National rank	21

Change in Number of Businesses 1995-2000

#	19,336
% change	16.40%

Total Student FTE
The Colorado Commission on Higher Education
Final FTE Student Enrollment Report

Governing Board / Institutions	Total Student FTE										
	FY 93-94	FY 94-95	FY 95-96	FY 96-97	FY 97-98	FY 98-99	FY 99-2000	FY 2000-01	FY 2001-02	FY 2002-03	FY 2003-04
Regents of the University of Colorado:	35,709	35,067	35,112	35,225	36,200	36,878	37,463	38,186	39,547	42,086	43,764
University of Colorado-Boulder	22,272	21,633	21,527	21,683	22,196	22,446	22,882	23,213	23,920	25,254	26,374
University of Colorado-Colorado Springs	3,916	3,974	4,009	4,084	4,559	4,768	4,968	5,072	5,324	5,906	6,146
University of Colorado-Denver	7,080	6,955	7,037	6,969	7,057	7,229	7,253	7,571	7,893	8,407	8,580
University of Colorado-Health Sciences	2,441	2,505	2,539	2,489	2,388	2,435	2,360	2,330	2,410	2,519	2,664
Board of Governors of Colorado State University System :	23,947	24,004	24,164	24,077	23,929	24,201	24,450	24,316	24,983	25,734	26,159
Colorado State University-Education & General	19,173	19,277	19,533	19,667	19,547	19,864	20,088	19,964	20,723	21,525	21,872
Colorado State University-Professional Veterinary Medicine	734	717	723	727	728	737	733	745	745	762	754
Colorado State University - Pueblo	4,040	4,011	3,909	3,683	3,653	3,600	3,629	3,607	3,515	3,448	3,534
Trustees of Fort Lewis College:											
Fort Lewis College	4,031	3,946	4,128	4,190	4,167	3,998	4,138	4,019	4,169	4,080	3,941
Trustees of Colorado School of Mines:											
Colorado School of Mines	3,006	3,094	3,189	3,242	3,211	3,250	3,276	3,114	3,216	3,331	3,445
Board of Trustees University of Northern Colorado:											
University of Northern Colorado	9,840	9,721	9,554	9,443	9,619	9,916	10,295	10,309	10,329	10,606	10,709
Trustees of Adams State College:											
Adams State College	2,164	2,255	2,274	2,295	2,177	2,266	2,262	2,143	2,293	2,322	2,313
Trustees of Mesa State College:											
Mesa State College	3,734	3,893	4,001	4,073	4,085	4,189	4,141	4,313	4,461	4,651	4,797
Trustees of Metropolitan State College:											
Metropolitan State College of Denver	12,307	12,246	12,087	12,347	12,556	12,317	12,369	12,280	13,227	14,188	14,628
Trustees of Western State College:											
Western State College	2,157	2,161	2,226	2,280	2,224	2,198	2,179	2,072	2,094	2,141	2,165
Community Colleges of Colorado:	35,165	35,113	35,086	35,224	35,716	37,013	37,472	37,718	39,655	43,879	46,574
Arapahoe Community College	4,110	4,036	4,072	4,090	4,086	4,208	4,140	4,091	4,318	4,688	4,854
Colorado Northwestern Community College	876	815	820	833	866	795	730	754	872	922	1,008
Community College of Aurora	2,702	2,671	2,619	2,418	2,404	2,577	2,693	2,669	2,814	3,178	3,484
Community College of Denver	4,603	4,440	4,236	4,227	4,038	4,071	4,026	4,027	4,188	5,042	5,539
Front Range Community College	6,483	6,350	6,737	6,446	6,500	7,008	7,467	7,680	8,125	9,224	9,949
Lamar Community College	654	630	664	698	737	745	673	674	682	762	741
Morgan Community College	846	716	769	815	879	927	959	959	988	928	941
Northeastern Junior College	1,648	1,633	1,593	1,713	1,532	1,579	1,538	1,604	1,594	1,641	1,532
Otero Junior College	799	813	775	805	854	906	959	974	1,092	1,141	1,247
Pikes Peak Community College	4,586	4,694	4,560	4,804	4,919	5,108	5,290	5,334	5,680	6,396	6,707
Pueblo Community College	2,675	2,749	2,821	2,911	3,146	3,221	3,332	3,292	3,610	3,903	4,286
Red Rocks Community College	3,940	4,033	3,953	3,897	4,185	4,398	4,202	4,233	4,204	4,471	4,711
Trinidad State Junior College	1,243	1,533	1,467	1,567	1,570	1,470	1,464	1,426	1,488	1,584	1,577
Local District Colleges:	7,062	7,000	6,776	6,906	6,915	6,908	6,775	6,852	6,906	6,521	6,103
Aims Community College	4,052	3,820	3,698	3,807	3,779	3,830	3,848	3,813	3,952	3,664	3,288
Colorado Mountain College	3,010	3,180	3,078	3,099	3,136	3,078	2,927	3,039	2,954	2,857	2,815
Governing Board Summary	132,060	131,500	131,821	132,396	133,884	136,227	138,045	138,470	143,972	153,018	158,496
District Summary	7,062	7,000	6,776	6,906	6,915	6,908	6,775	6,852	6,906	6,521	6,103
Public Summary	139,122	138,500	138,597	139,302	140,799	143,135	144,820	145,322	150,879	159,539	164,599

Percentage Change in Total Student FTE
The Colorado Commission on Higher Education
Final FTE Student Enrollment Report

Governing Board / Institutions	Percentage Change in Total Student FTE									
	FY 94 to FY 95	FY 95 to FY 96	FY 96 to FY 97	FY 97 to FY 98	FY 98 to FY 99	FY 99 to FY 00	FY 00 to FY 01	FY 01 to FY 02	FY 02 to FY 03	FY 03 to FY 04
Regents of the University of Colorado:	-1.8%	0.1%	0.3%	2.8%	1.9%	1.6%	1.9%	3.6%	6.4%	4.0%
University of Colorado-Boulder	-2.9%	-0.5%	0.7%	2.4%	1.1%	1.9%	1.4%	3.0%	5.6%	4.4%
University of Colorado-Colorado Springs	1.5%	0.9%	1.9%	11.6%	4.6%	4.2%	2.1%	5.0%	10.9%	4.1%
University of Colorado-Denver	-1.8%	1.2%	-1.0%	1.3%	2.4%	0.3%	4.4%	4.2%	6.5%	2.1%
University of Colorado-Health Sciences	2.6%	1.4%	-2.0%	-4.1%	2.0%	-3.1%	-1.3%	3.5%	4.5%	5.7%
Board of Governors of Colorado State University System :	0.2%	0.7%	-0.4%	-0.6%	1.1%	1.0%	-0.5%	2.7%	3.0%	1.7%
Colorado State University-Education & General	0.5%	1.3%	0.7%	-0.6%	1.6%	1.1%	-0.6%	3.8%	3.9%	1.6%
Colorado State University-Professional Veterinary Medicine	-2.3%	0.8%	0.6%	0.2%	1.2%	-0.6%	1.6%	0.0%	2.4%	-1.1%
Colorado State University - Pueblo	-0.7%	-2.5%	-5.8%	-0.8%	-1.5%	0.8%	-0.6%	-2.6%	-1.9%	2.5%
Trustees of Fort Lewis College:										
Fort Lewis College	-2.1%	4.6%	1.5%	-0.5%	-4.1%	3.5%	-2.9%	3.7%	-2.1%	-3.4%
Trustees of Colorado School of Mines:										
Colorado School of Mines	2.9%	3.1%	1.7%	-1.0%	1.2%	0.8%	-4.9%	3.2%	3.6%	3.4%
Board of Trustees University of Northern Colorado:										
University of Northern Colorado	-1.2%	-1.7%	-1.2%	1.9%	3.1%	3.8%	0.1%	0.2%	2.7%	1.0%
Trustees of Adams State College:										
Adams State College	4.2%	0.8%	0.9%	-5.1%	4.1%	-0.2%	-5.2%	7.0%	1.2%	-0.4%
Trustees of Mesa State College:										
Mesa State College	4.3%	2.8%	1.8%	0.3%	2.5%	-1.1%	4.1%	3.4%	4.3%	3.1%
Trustees of Metropolitan State College:										
Metropolitan State College of Denver	-0.5%	-1.3%	2.2%	1.7%	-1.9%	0.4%	-0.7%	7.7%	7.3%	3.1%
Trustees of Western State College:										
Western State College	0.2%	3.0%	2.4%	-2.5%	-1.2%	-0.9%	-4.9%	1.0%	2.3%	1.1%
Community Colleges of Colorado:	-0.1%	-0.1%	0.4%	1.4%	3.6%	1.2%	0.7%	5.1%	10.7%	6.1%
Arapahoe Community College	-1.8%	0.9%	0.4%	-0.1%	3.0%	-1.6%	-1.2%	5.5%	8.6%	3.5%
Colorado Northwestern Community College	-7.0%	0.6%	1.6%	4.0%	-8.2%	-8.1%	3.3%	15.6%	5.7%	9.3%
Community College of Aurora	-1.1%	-1.9%	-7.7%	-0.6%	7.2%	4.5%	-0.9%	5.4%	12.9%	9.6%
Community College of Denver	-3.5%	-4.6%	-0.2%	-4.5%	0.8%	-1.1%	0.0%	4.0%	20.4%	9.9%
Front Range Community College	-2.1%	6.1%	-4.3%	0.8%	7.8%	6.5%	2.9%	5.8%	13.5%	7.9%
Lamar Community College	-3.7%	5.4%	5.1%	5.6%	1.1%	-9.6%	0.1%	1.2%	11.7%	-2.8%
Morgan Community College	-15.4%	7.4%	6.0%	7.9%	5.5%	3.5%	-0.1%	3.0%	-6.1%	1.4%
Northeastern Junior College	-0.9%	-2.4%	7.5%	-10.6%	3.1%	-2.6%	4.3%	-0.7%	3.0%	-6.6%
Otero Junior College	1.8%	-4.7%	3.9%	6.1%	6.1%	5.8%	1.6%	12.1%	4.4%	9.3%
Pikes Peak Community College	2.4%	-2.9%	5.4%	2.4%	3.8%	3.6%	0.8%	6.5%	12.6%	4.9%
Pueblo Community College	2.8%	2.6%	3.2%	8.1%	2.4%	3.5%	-1.2%	9.7%	8.1%	9.8%
Red Rocks Community College	2.4%	-2.0%	-1.4%	7.4%	5.1%	-4.5%	0.8%	-0.7%	6.4%	5.4%
Trinidad State Junior College	23.3%	-4.3%	6.8%	0.2%	-6.4%	-0.4%	-2.6%	4.4%	6.5%	-0.5%
Local District Colleges:	-0.9%	-3.2%	1.9%	0.1%	-0.1%	-1.9%	1.1%	0.8%	-5.6%	-6.4%
Aims Community College	-5.7%	-3.2%	2.9%	-0.7%	1.3%	0.5%	-0.9%	3.7%	-7.3%	-10.3%
Colorado Mountain College	5.6%	-3.2%	0.7%	1.2%	-1.8%	-4.9%	3.8%	-2.8%	-3.3%	-1.5%
Governing Board Summary	-0.4%	0.2%	0.4%	1.1%	1.8%	1.3%	0.3%	4.0%	6.3%	3.6%
District Summary	-0.9%	-3.2%	1.9%	0.1%	-0.1%	-1.9%	1.1%	0.8%	-5.6%	-6.4%
Public Summary	-0.4%	0.1%	0.5%	1.1%	1.7%	1.2%	0.3%	3.8%	5.7%	3.2%

Resident Student FTE
The Colorado Commission on Higher Education
Final FTE Student Enrollment Report

Governing Board / Institutions	Resident Student FTE										
	FY 93-94	FY 94-95	FY 95-96	FY 96-97	FY 97-98	FY 98-99	FY 99-2000	FY 2000-01	FY 2001-02	FY 2002-03	FY 2003-04
Regents of the University of Colorado:	27,504	27,237	27,084	27,312	28,013	28,491	28,971	29,258	30,164	32,346	33,866
University of Colorado-Boulder	15,097	14,846	14,632	14,934	15,239	15,243	15,667	15,692	16,007	16,934	17,759
University of Colorado-Colorado Springs	3,669	3,734	3,777	3,840	4,244	4,423	4,602	4,688	4,930	5,526	5,788
University of Colorado-Denver	6,564	6,409	6,426	6,313	6,380	6,627	6,601	6,783	7,065	7,637	7,909
University of Colorado-Health Sciences	2,174	2,248	2,249	2,225	2,150	2,198	2,102	2,096	2,162	2,249	2,410
Board of Governors of Colorado State University System :	18,499	18,535	18,586	18,683	18,569	18,907	19,165	19,106	19,638	20,393	20,988
Colorado State University-Education & General	14,531	14,661	14,844	15,157	15,080	15,424	15,657	15,597	16,174	16,931	17,406
Colorado State University-Professional Veterinary Medicine	337	326	330	327	352	380	400	422	419	432	424
Colorado State University - Pueblo	3,632	3,549	3,413	3,199	3,136	3,104	3,108	3,086	3,045	3,030	3,158
Trustees of Fort Lewis College:	2,838	2,764	2,913	2,935	2,866	2,703	2,756	2,672	2,800	2,784	2,727
Fort Lewis College	2,838	2,764	2,913	2,935	2,866	2,703	2,756	2,672	2,800	2,784	2,727
Trustees of Colorado School of Mines:	1,983	2,043	2,122	2,160	2,168	2,281	2,344	2,251	2,358	2,485	2,615
Colorado School of Mines	1,983	2,043	2,122	2,160	2,168	2,281	2,344	2,251	2,358	2,485	2,615
Board of Trustees University of Northern Colorado:	8,749	8,643	8,403	8,225	8,315	8,573	8,990	9,041	9,088	9,421	9,596
University of Northern Colorado	8,749	8,643	8,403	8,225	8,315	8,573	8,990	9,041	9,088	9,421	9,596
Trustees of Adams State College:	1,748	1,820	1,833	1,869	1,798	1,898	1,894	1,809	1,920	1,966	1,993
Adams State College	1,748	1,820	1,833	1,869	1,798	1,898	1,894	1,809	1,920	1,966	1,993
Trustees of Mesa State College:	3,382	3,494	3,589	3,667	3,663	3,779	3,703	3,884	4,030	4,209	4,334
Mesa State College	3,382	3,494	3,589	3,667	3,663	3,779	3,703	3,884	4,030	4,209	4,334
Trustees of Metropolitan State College:	11,996	11,923	11,767	11,988	12,166	11,909	11,943	11,846	12,761	13,720	14,178
Metropolitan State College of Denver	11,996	11,923	11,767	11,988	12,166	11,909	11,943	11,846	12,761	13,720	14,178
Trustees of Western State College:	1,393	1,417	1,460	1,525	1,478	1,501	1,499	1,432	1,499	1,550	1,618
Western State College	1,393	1,417	1,460	1,525	1,478	1,501	1,499	1,432	1,499	1,550	1,618
Community Colleges of Colorado:	33,090	32,960	33,129	33,332	33,810	34,936	35,475	35,938	37,805	41,914	44,573
Arapahoe Community College	3,832	3,744	3,832	3,821	3,785	3,832	3,815	3,800	4,080	4,500	4,657
Colorado Northwestern Community College	750	697	704	732	768	710	651	666	796	843	907
Community College of Aurora	2,658	2,603	2,559	2,366	2,349	2,494	2,608	2,595	2,711	3,076	3,410
Community College of Denver	4,365	4,187	3,984	3,973	3,801	3,816	3,762	3,791	3,925	4,744	5,245
Front Range Community College	6,061	5,916	6,329	6,056	6,066	6,554	6,985	7,286	7,719	8,764	9,401
Lamar Community College	581	557	580	621	633	649	614	630	640	707	696
Morgan Community College	807	696	744	802	861	911	948	949	979	922	936
Northeastern Junior College	1,570	1,559	1,515	1,579	1,457	1,500	1,464	1,546	1,513	1,557	1,447
Otero Junior College	749	761	735	773	835	887	933	955	1,072	1,109	1,216
Pikes Peak Community College	4,437	4,573	4,436	4,662	4,772	4,994	5,171	5,208	5,507	6,147	6,461
Pueblo Community College	2,623	2,690	2,747	2,831	3,045	3,053	3,175	3,159	3,492	3,782	4,171
Red Rocks Community College	3,598	3,627	3,666	3,720	4,035	4,228	4,034	4,064	4,032	4,323	4,581
Trinidad State Junior College	1,059	1,350	1,298	1,396	1,403	1,308	1,314	1,288	1,340	1,440	1,443
Local District Colleges:	6,448	6,307	6,094	6,194	6,119	5,996	5,969	6,021	6,157	5,845	5,455
Aims Community College	3,992	3,760	3,630	3,717	3,636	3,554	3,582	3,576	3,745	3,505	3,171
Colorado Mountain College	2,456	2,547	2,464	2,477	2,483	2,442	2,387	2,445	2,412	2,340	2,284
Governing Board Summary	111,182	110,836	110,886	111,696	112,845	114,980	116,739	117,235	122,062	130,788	136,489
District Summary	6,448	6,307	6,094	6,194	6,119	5,996	5,969	6,021	6,157	5,845	5,455
Public Summary	117,630	117,143	116,980	117,890	118,964	120,976	122,708	123,257	128,218	136,634	141,945

Percentage Change in Resident Student FTE
The Colorado Commission on Higher Education
Final FTE Student Enrollment Report

Governing Board / Institutions	Percentage Change in Resident Student FTE									
	FY 94 to FY 95	FY 95 to FY 96	FY 96 to FY 97	FY 97 to FY 98	FY 98 to FY 99	FY 99 to FY 00	FY 00 to FY 01	FY 01 to FY 02	FY 02 to FY 03	FY 03 to FY 04
Regents of the University of Colorado:	-1.0%	-0.6%	0.8%	2.6%	1.7%	1.7%	1.0%	3.1%	7.2%	4.7%
University of Colorado-Boulder	-1.7%	-1.4%	2.1%	2.0%	0.0%	2.8%	0.2%	2.0%	5.8%	4.9%
University of Colorado-Colorado Springs	1.8%	1.2%	1.7%	10.5%	4.2%	4.0%	1.9%	5.2%	12.1%	4.7%
University of Colorado-Denver	-2.4%	0.3%	-1.8%	1.1%	3.9%	-0.4%	2.8%	4.2%	8.1%	3.6%
University of Colorado-Health Sciences	3.4%	0.0%	-1.1%	-3.4%	2.2%	-4.4%	-0.3%	3.1%	4.0%	7.2%
Board of Governors of Colorado State University System :	0.2%	0.3%	0.5%	-0.6%	1.8%	1.4%	-0.3%	2.8%	3.8%	2.9%
Colorado State University-Education & General	0.9%	1.3%	2.1%	-0.5%	2.3%	1.5%	-0.4%	3.7%	4.7%	2.8%
Colorado State University-Professional Veterinary Medicine	-3.3%	1.3%	-0.7%	7.5%	7.9%	5.3%	5.5%	-0.7%	3.1%	-1.9%
Colorado State University - Pueblo	-2.3%	-3.8%	-6.3%	-2.0%	-1.0%	0.1%	-0.7%	-1.3%	-0.5%	4.2%
Trustees of Fort Lewis College:										
Fort Lewis College	-2.6%	5.4%	0.8%	-2.4%	-5.7%	2.0%	-3.0%	4.8%	-0.6%	-2.0%
Trustees of Colorado School of Mines:										
Colorado School of Mines	3.0%	3.9%	1.8%	0.4%	5.2%	2.7%	-4.0%	4.7%	5.4%	5.2%
Board of Trustees University of Northern Colorado:										
University of Northern Colorado	-1.2%	-2.8%	-2.1%	1.1%	3.1%	4.9%	0.6%	0.5%	3.7%	1.9%
Trustees of Adams State College:										
Adams State College	4.1%	0.7%	2.0%	-3.8%	5.6%	-0.2%	-4.5%	6.1%	2.4%	1.4%
Trustees of Mesa State College:										
Mesa State College	3.3%	2.7%	2.2%	-0.1%	3.2%	-2.0%	4.9%	3.7%	4.5%	3.0%
Trustees of Metropolitan State College:										
Metropolitan State College of Denver	-0.6%	-1.3%	1.9%	1.5%	-2.1%	0.3%	-0.8%	7.7%	7.5%	3.3%
Trustees of Western State College:										
Western State College	1.7%	3.0%	4.5%	-3.1%	1.6%	-0.1%	-4.5%	4.7%	3.4%	4.4%
Community Colleges of Colorado:	-0.4%	0.5%	0.6%	1.4%	3.3%	1.5%	1.3%	5.2%	10.9%	6.3%
Arapahoe Community College	-2.3%	2.4%	-0.3%	-0.9%	1.2%	-0.4%	-0.4%	7.4%	10.3%	3.5%
Colorado Northwestern Community College	-7.1%	1.0%	4.0%	4.9%	-7.6%	-8.3%	2.2%	19.6%	5.9%	7.6%
Community College of Aurora	-2.1%	-1.7%	-7.5%	-0.7%	6.2%	4.6%	-0.5%	4.4%	13.5%	10.9%
Community College of Denver	-4.1%	-4.8%	-0.3%	-4.3%	0.4%	-1.4%	0.8%	3.5%	20.9%	10.6%
Front Range Community College	-2.4%	7.0%	-4.3%	0.2%	8.0%	6.6%	4.3%	5.9%	13.5%	7.3%
Lamar Community College	-4.1%	4.1%	7.1%	1.9%	2.5%	-5.4%	2.7%	1.5%	10.5%	-1.5%
Morgan Community College	-13.8%	6.9%	7.8%	7.4%	5.8%	4.1%	0.1%	3.2%	-5.9%	1.5%
Northeastern Junior College	-0.7%	-2.8%	4.2%	-7.7%	3.0%	-2.4%	5.6%	-2.2%	2.9%	-7.1%
Otero Junior College	1.6%	-3.4%	5.2%	8.0%	6.2%	5.2%	2.3%	12.3%	3.4%	9.7%
Pikes Peak Community College	3.1%	-3.0%	5.1%	2.4%	4.7%	3.6%	0.7%	5.7%	11.6%	5.1%
Pueblo Community College	2.6%	2.1%	3.1%	7.6%	0.3%	4.0%	-0.5%	10.6%	8.3%	10.3%
Red Rocks Community College	0.8%	1.1%	1.5%	8.5%	4.8%	-4.6%	0.7%	-0.8%	7.2%	6.0%
Trinidad State Junior College	27.5%	-3.9%	7.6%	0.5%	-6.8%	0.5%	-2.0%	4.0%	7.5%	0.2%
Local District Colleges:	-2.2%	-3.4%	1.6%	-1.2%	-2.0%	-0.4%	0.9%	2.2%	-5.1%	-6.7%
Aims Community College	-5.8%	-3.5%	2.4%	-2.2%	-2.3%	0.8%	-0.2%	4.7%	-6.4%	-9.5%
Colorado Mountain College	3.7%	-3.3%	0.5%	0.2%	-1.7%	-2.3%	2.4%	-1.3%	-3.0%	-2.4%
Governing Board Summary	-0.3%	0.0%	0.7%	1.0%	1.9%	1.5%	0.4%	4.1%	7.1%	4.4%
District Summary	-2.2%	-3.4%	1.6%	-1.2%	-2.0%	-0.4%	0.9%	2.2%	-5.1%	-6.7%
Public Summary	-0.4%	-0.1%	0.8%	0.9%	1.7%	1.4%	0.4%	4.0%	6.6%	3.9%

Non-Resident Student FTE
The Colorado Commission on Higher Education
Final FTE Student Enrollment Report

Governing Board / Institutions	Non-Resident Student FTE										
	FY 93-94	FY 94-95	FY 95-96	FY 96-97	FY 97-98	FY 98-99	FY 99-2000	FY 2000-01	FY 2001-02	FY 2002-03	FY 2003-04
Regents of the University of Colorado:	8,205	7,830	8,028	7,913	8,187	8,387	8,491	8,928	9,383	9,740	9,898
University of Colorado-Boulder	7,175	6,787	6,895	6,749	6,957	7,203	7,215	7,521	7,913	8,320	8,615
University of Colorado-Colorado Springs	247	240	232	244	315	345	366	385	394	379	358
University of Colorado-Denver	516	546	611	656	677	602	652	788	827	770	671
University of Colorado-Health Sciences	267	257	290	264	238	237	258	234	249	271	254
Board of Governors of Colorado State University System :	5,447	5,469	5,578	5,393	5,360	5,293	5,285	5,210	5,345	5,341	5,171
Colorado State University-Education & General	4,642	4,616	4,689	4,510	4,467	4,440	4,431	4,367	4,550	4,593	4,466
Colorado State University-Professional Veterinary Medicine	397	391	393	399	376	357	333	323	325	330	330
Colorado State University - Pueblo	408	462	496	484	517	496	521	521	470	418	376
Trustees of Fort Lewis College:											
Fort Lewis College	1,193	1,182	1,215	1,255	1,301	1,295	1,382	1,347	1,369	1,296	1,214
Trustees of Colorado School of Mines:											
Colorado School of Mines	1,023	1,051	1,067	1,082	1,043	969	933	864	858	846	830
Board of Trustees University of Northern Colorado:											
University of Northern Colorado	1,091	1,078	1,151	1,218	1,304	1,343	1,305	1,268	1,240	1,185	1,112
Trustees of Adams State College:											
Adams State College	416	435	441	426	379	368	368	335	374	356	320
Trustees of Mesa State College:											
Mesa State College	352	399	412	406	422	410	438	429	431	442	463
Trustees of Metropolitan State College:											
Metropolitan State College of Denver	311	323	320	359	390	408	427	434	466	468	450
Trustees of Western State College:											
Western State College	764	744	766	755	746	697	680	640	595	591	547
Community Colleges of Colorado:	2,075	2,153	1,957	1,892	1,906	2,077	1,996	1,781	1,850	1,965	2,002
Arapahoe Community College	278	292	240	269	301	376	325	291	238	188	197
Colorado Northwestern Community College	126	118	116	101	98	85	79	89	76	79	101
Community College of Aurora	44	68	60	52	55	83	84	74	103	102	74
Community College of Denver	238	253	252	254	237	255	264	235	264	298	293
Front Range Community College	422	434	408	390	434	454	482	394	406	460	548
Lamar Community College	73	73	84	77	104	96	59	44	43	55	44
Morgan Community College	39	20	25	13	18	16	11	10	8	6	5
Northeastern Junior College	78	74	78	134	75	79	74	59	81	84	85
Otero Junior College	50	52	40	32	19	19	25	19	20	32	31
Pikes Peak Community College	149	121	124	142	147	114	118	126	172	249	246
Pueblo Community College	52	59	74	80	101	168	157	133	118	120	115
Red Rocks Community College	342	406	287	177	150	170	168	169	172	148	129
Trinidad State Junior College	184	183	169	171	167	162	150	138	148	144	134
Local District Colleges:	614	693	682	712	796	912	806	830	750	676	647
Aims Community College	60	60	68	90	143	276	266	236	208	159	116
Colorado Mountain College	554	633	614	622	653	636	540	594	542	517	531
Governing Board Summary	20,877	20,664	20,935	20,699	21,038	21,247	21,305	21,235	21,911	22,230	22,007
District Summary	614	693	682	712	796	912	806	830	750	676	647
Public Summary	21,491	21,357	21,617	21,411	21,834	22,159	22,111	22,065	22,660	22,905	22,654

Percentage Change in Non-Resident Student FTE
The Colorado Commission on Higher Education
Final FTE Student Enrollment Report

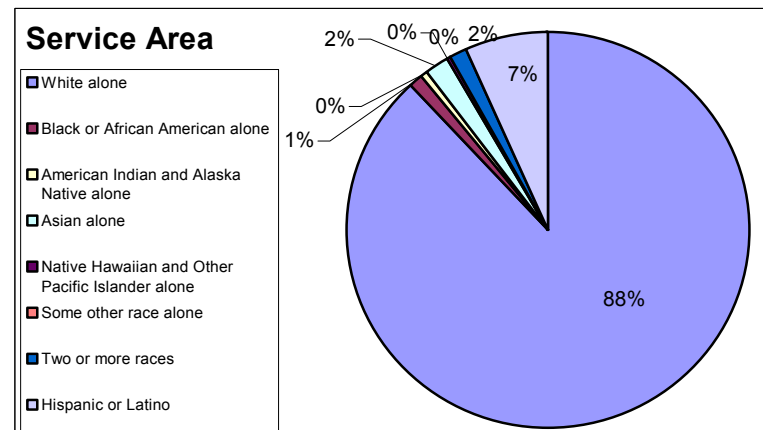
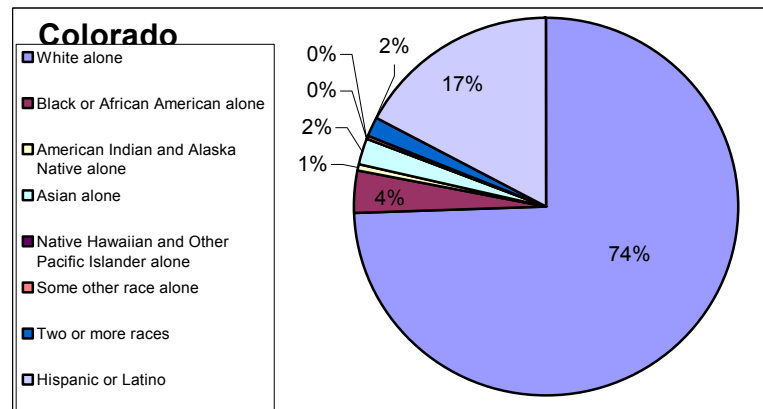
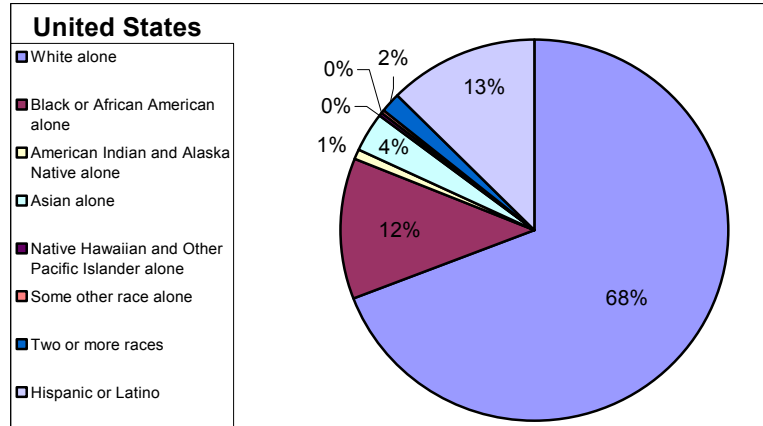
Governing Board / Institutions	Percentage Change in Non-Resident Student FTE									
	FY 94 to FY 95	FY 95 to FY 96	FY 96 to FY 97	FY 97 to FY 98	FY 98 to FY 99	FY 99 to FY 00	FY 00 to FY 01	FY 01 to FY 02	FY 02 to FY 03	FY 03 to FY 04
Regents of the University of Colorado:	-4.6%	2.5%	-1.4%	3.5%	2.4%	1.2%	5.1%	5.1%	3.8%	1.6%
University of Colorado-Boulder	-5.4%	1.6%	-2.1%	3.1%	3.5%	0.2%	4.2%	5.2%	5.1%	3.5%
University of Colorado-Colorado Springs	-2.8%	-3.3%	5.2%	29.1%	9.5%	6.2%	4.9%	2.4%	-3.7%	-5.7%
University of Colorado-Denver	5.8%	11.9%	7.4%	3.2%	-11.1%	8.3%	20.9%	5.0%	-6.9%	-12.9%
University of Colorado-Health Sciences	-3.7%	12.8%	-9.0%	-9.8%	-0.4%	8.8%	-9.4%	6.4%	8.9%	-6.1%
Board of Governors of Colorado State University System :	0.4%	2.0%	-3.3%	-0.6%	-1.3%	-0.2%	-1.4%	2.6%	-0.1%	-3.2%
Colorado State University-Education & General	-0.6%	1.6%	-3.8%	-1.0%	-0.6%	-0.2%	-1.5%	4.2%	1.0%	-2.8%
Colorado State University-Professional Veterinary Medicine	-1.5%	0.5%	1.6%	-5.8%	-5.1%	-6.8%	-3.0%	0.8%	1.4%	-0.1%
Colorado State University - Pueblo	13.2%	7.4%	-2.4%	6.8%	-4.1%	5.1%	-0.1%	-9.8%	-11.0%	-10.1%
Trustees of Fort Lewis College:										
Fort Lewis College	-0.9%	2.8%	3.3%	3.7%	-0.5%	6.7%	-2.5%	1.6%	-5.3%	-6.3%
Trustees of Colorado School of Mines:										
Colorado School of Mines	2.7%	1.5%	1.4%	-3.6%	-7.1%	-3.7%	-7.4%	-0.7%	-1.4%	-1.9%
Board of Trustees University of Northern Colorado:										
University of Northern Colorado	-1.2%	6.8%	5.8%	7.1%	3.0%	-2.8%	-2.8%	-2.2%	-4.5%	-6.1%
Trustees of Adams State College:										
Adams State College	4.6%	1.4%	-3.4%	-11.0%	-2.9%	0.0%	-9.1%	11.7%	-4.8%	-10.0%
Trustees of Mesa State College:										
Mesa State College	13.4%	3.3%	-1.5%	3.9%	-2.8%	6.9%	-2.2%	0.7%	2.4%	4.8%
Trustees of Metropolitan State College:										
Metropolitan State College of Denver	3.9%	-0.9%	12.2%	8.6%	4.6%	4.5%	1.8%	7.5%	0.3%	-3.8%
Trustees of Western State College:										
Western State College	-2.6%	3.0%	-1.4%	-1.2%	-6.6%	-2.4%	-5.9%	-7.1%	-0.5%	-7.5%
Community Colleges of Colorado:	3.8%	-9.1%	-3.3%	0.7%	9.0%	-3.9%	-10.8%	3.9%	6.2%	1.9%
Arapahoe Community College	5.0%	-17.8%	12.1%	11.9%	24.9%	-13.6%	-10.3%	-18.2%	-21.3%	4.8%
Colorado Northwestern Community College	-6.3%	-1.7%	-12.9%	-3.0%	-13.3%	-7.0%	12.5%	-14.5%	4.4%	27.7%
Community College of Aurora	54.5%	-11.8%	-13.3%	5.8%	50.9%	1.7%	-12.5%	39.8%	-1.0%	-27.8%
Community College of Denver	6.3%	-0.4%	0.8%	-6.7%	7.6%	3.6%	-11.0%	12.1%	13.1%	-1.5%
Front Range Community College	2.8%	-6.0%	-4.4%	11.3%	4.6%	6.1%	-18.3%	3.2%	13.2%	19.1%
Lamar Community College	0.0%	15.1%	-8.3%	35.1%	-7.7%	-38.3%	-26.0%	-2.9%	29.0%	-19.4%
Morgan Community College	-48.7%	25.0%	-48.0%	38.5%	-11.1%	-29.4%	-13.1%	-15.4%	-31.9%	-15.9%
Northeastern Junior College	-5.1%	5.4%	71.8%	-44.0%	5.3%	-6.8%	-20.5%	38.3%	3.8%	1.2%
Otero Junior College	4.0%	-23.1%	-20.0%	-40.6%	0.0%	33.5%	-23.5%	2.3%	60.9%	-2.9%
Pikes Peak Community College	-18.8%	2.5%	14.5%	3.5%	-22.4%	3.9%	6.8%	36.4%	44.4%	-1.4%
Pueblo Community College	13.5%	25.4%	8.1%	26.3%	66.3%	-6.6%	-15.6%	-11.0%	1.7%	-4.2%
Red Rocks Community College	18.7%	-29.3%	-38.3%	-15.3%	13.3%	-1.3%	0.8%	1.9%	-14.1%	-12.5%
Trinidad State Junior College	-0.5%	-7.7%	1.2%	-2.3%	-3.0%	-7.7%	-7.8%	7.5%	-2.6%	-7.3%
Local District Colleges:	12.9%	-1.6%	4.4%	11.8%	14.6%	-11.6%	3.0%	-9.7%	-9.9%	-4.2%
Aims Community College	0.0%	13.3%	32.4%	58.9%	93.0%	-3.7%	-11.2%	-12.1%	-23.6%	-26.7%
Colorado Mountain College	14.3%	-3.0%	1.3%	5.0%	-2.6%	-15.1%	10.0%	-8.8%	-4.6%	2.7%
Governing Board Summary	-1.0%	1.3%	-1.1%	1.6%	1.0%	0.3%	-0.3%	3.2%	1.5%	-1.0%
District Summary	12.9%	-1.6%	4.4%	11.8%	14.6%	-11.6%	3.0%	-9.7%	-9.9%	-4.2%
Public Summary	-0.6%	1.2%	-1.0%	2.0%	1.5%	-0.2%	-0.2%	2.7%	1.1%	-1.1%

Populations by Race plus the Ethnicity of Hispanic or Latino

This data is from Census 2000

Census 2000 Table P7

	United States	Colorado	Service Area (Zip Code)
Total:	281,421,906	4,301,261	498093
Not Hispanic or Latino:	246,183,425	3,566,162	465334
White alone	194,514,140	3,201,519	439183
Black or African American alone	33,707,230	153,932	5055
American Indian and Alaska Native alone	2,091,206	29,286	2084
Asian alone	10,067,813	91,387	10705
Native Hawaiian and Other Pacific Islander alone	342,743	3,655	355
Some other race alone	447,552	5,255	416
Two or more races	5,012,741	81,128	7536
Hispanic or Latino	35,238,481	735,099	32759
White alone	16,839,585	357,060	18517
Black or African American alone	654,510	5,347	211
American Indian and Alaska Native alone	356,783	13,815	493
Asian alone	104,007	1,919	132
Native Hawaiian and Other Pacific Islander alone	36,039	643	77
Some other race alone	14,989,372	305,297	10395
Two or more races	2,258,185	51,018	2934



Age / Sex - Census 2000 Table P8

	United States	Colorado	Service Area
Male:	137,916,186	2,163,954	248202
Female:	143,505,720	2,137,307	249891
Total:	281,421,906	4,301,261	498093

	United States	Colorado	Service Area
Male	49%	50%	50%
Female	51%	50%	50%

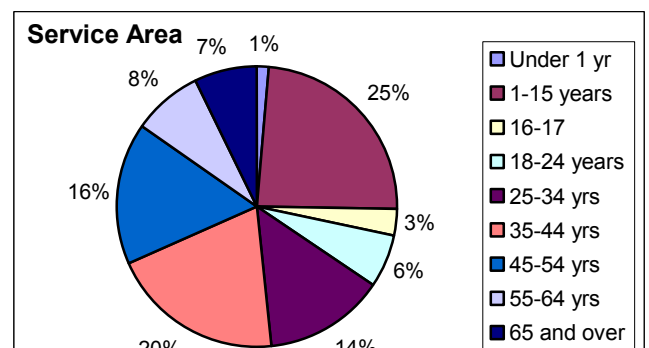
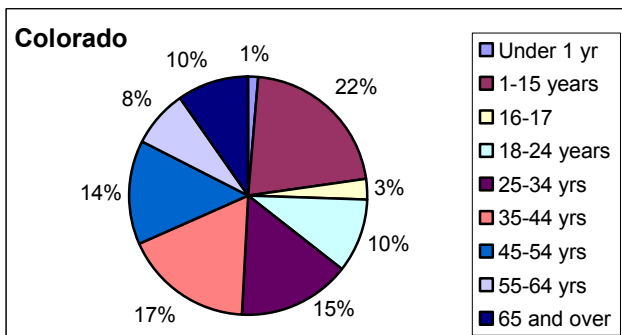
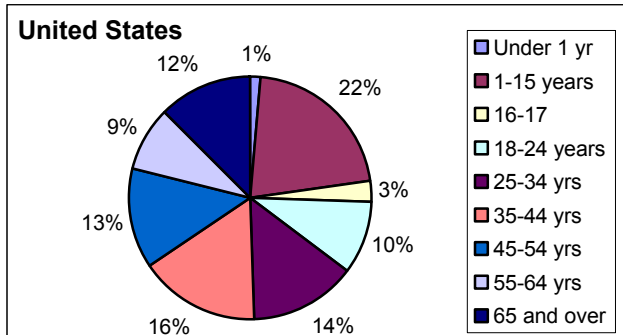
Age Group	United States	Colorado	Service Area
Under 1 yr	3,827,009	61,040	7169
1-15 years	60,426,820	915,024	118,164
16-17	7,888,928	120,726	15,237
18-24 years	27,067,510	427,839	30,441
25-34 yrs	39,577,357	664,455	69,666
35-44 yrs	45,905,471	745,402	99,326
45-54 yrs	37,578,609	613,007	81,886
55-64 yrs	24,171,230	337,986	39,608
65 and over	34,978,972	415,782	36,596
TOTAL	281,421,906	4,301,261	498093

Median Household Income - Census 2000 Table P53

	United States	Colorado	Service Area (Zip Code)
Median household income in 2000	41,994	47,203	76731

Per Capita Income - Census 2000 Table P82

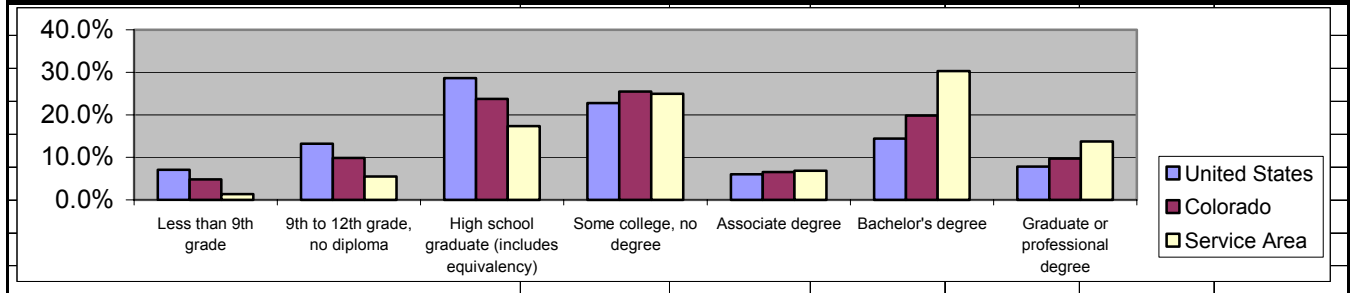
	United States	Colorado	Service Area (Zip Code)
Per capita income in 1999	21,587	24,049	34061



This data is from Census 2000

Age by Educational Attainment for the Population 18 years and over - Census 2000 PCT25

	United States		Colorado		Service Area (Zip Code)	
	#	%	#	%	#	%
18 to 24 years:	27,067,510		427,839		30441	
Less than 9th grade	1,079,676	4.0%	19,377	4.5%	556	1.8%
9th to 12th grade, no diploma	5,754,951	21.3%	87,294	20.4%	6812	22.4%
High school graduate (includes equivalency)	7,737,771	28.6%	118,154	27.6%	8487	27.9%
Some college, no degree	9,284,898	34.3%	148,837	34.8%	9535	31.3%
Associate degree	1,095,693	4.0%	15,897	3.7%	1290	4.2%
Bachelor's degree	1,964,109	7.3%	35,982	8.4%	3557	11.7%
Graduate or professional degree	150,412	0.6%	2298	0.5%	204	0.7%
25 to 34 years:	39,577,357		664,455		69666	
Less than 9th grade	1,880,372	4.8%	30,337	4.6%	596	0.9%
9th to 12th grade, no diploma	4,492,287	11.4%	57,515	8.7%	2566	3.7%
High school graduate (includes equivalency)	10,223,614	25.8%	134,496	20.2%	10042	14.4%
Some college, no degree	9,123,703	23.1%	160,525	24.2%	17518	25.1%
Associate degree	2,957,508	7.5%	50,279	7.6%	4882	7.0%
Bachelor's degree	8,045,308	20.3%	178,908	26.9%	27080	38.9%
Graduate or professional degree	2,854,565	7.2%	52,395	7.9%	6982	10.0%
35 to 44 years:	45,905,471		745,402		99326	
Less than 9th grade	2,110,806	4.6%	24,902	3.3%	614	0.6%
9th to 12th grade, no diploma	4,757,487	10.4%	54,184	7.3%	3260	3.3%
High school graduate (includes equivalency)	13,068,020	28.5%	171,564	23.0%	14720	14.8%
Some college, no degree	10,354,927	22.6%	180,298	24.2%	23538	23.7%
Associate degree	3,732,108	8.1%	64,773	8.7%	8006	8.1%
Bachelor's degree	7,883,401	17.2%	169,687	22.8%	34493	34.7%
Graduate or professional degree	3,998,722	8.7%	79,994	10.7%	14695	14.8%
45 to 64 years:	61,749,839		950,993		121494	
Less than 9th grade	3,903,742	6.3%	33,187	3.5%	1068	0.9%
9th to 12th grade, no diploma	6,499,106	10.5%	60,559	6.4%	3545	2.9%
High school graduate (includes equivalency)	17,696,654	28.7%	209,511	22.0%	18703	15.4%
Some college, no degree	13,394,914	21.7%	241,824	25.4%	30178	24.8%
Associate degree	3,958,821	6.4%	66,990	7.0%	9082	7.5%
Bachelor's degree	9,258,616	15.0%	197,947	20.8%	35799	29.5%
Graduate or professional degree	7,037,986	11.4%	140,975	14.8%	23119	19.0%
65 years and over:	34,978,972		415,782		36596	
Less than 9th grade	5,860,557	16.8%	45,922	11.0%	1898	5.2%
9th to 12th grade, no diploma	6,211,268	17.8%	56,433	13.6%	3355	9.2%
High school graduate (includes equivalency)	11,180,693	32.0%	128,789	31.0%	10101	27.6%
Some college, no degree	5,478,051	15.7%	84,963	20.4%	8500	23.2%
Associate degree	864,396	2.5%	11,826	2.8%	1149	3.1%
Bachelor's degree	3,130,467	8.9%	52,486	12.6%	7290	19.9%
Graduate or professional degree	2,253,540	6.4%	35,363	8.5%	4303	11.8%
Total - all ages 18 and above	209,279,149		3,204,471		357523	
Less than 9th grade	14,835,153	7.1%	153,725	4.8%	4,732	1.3%
9th to 12th grade, no diploma	27,715,099	13.2%	315,985	9.9%	19,538	5.5%
High school graduate (includes equivalency)	59,906,752	28.6%	762,514	23.8%	62,053	17.4%
Some college, no degree	47,636,493	22.8%	816,447	25.5%	89,269	25.0%
Associate degree	12,608,526	6.0%	209,765	6.5%	24,409	6.8%
Bachelor's degree	30,281,901	14.5%	635,010	19.8%	108,219	30.3%
Graduate or professional degree	16,295,225	7.8%	311,025	9.7%	49,303	13.8%



Jobs Requiring an Associates Degree

SOC Code	Occupational Title	Employment		Total Absolute Growth	Growth Rate	Openings	Replacements	Absolute Growth
		2000	2010					
15-1041	Computer Support Specialists	14,850	35,140	20,290	13.70%	2,092	63	2,029
29-1111	Registered Nurses	28,640	36,020	7,380	2.60%	1,316	578	738
17-3023	Electrical & Electronic Engineering Technicians	4,850	6,000	1,150	2.40%	213	98	115
29-2021	Dental Hygienists	2,580	3,520	940	3.70%	131	37	94
29-2071	Medical Records & Health Information Technicians	1,920	2,760	840	4.40%	127	43	84
23-2011	Paralegals & Legal Assistants	3,200	3,950	750	2.30%	95	20	75
29-9099	Healthcare Practitioners & Technical Workers, All Other	2,750	3,320	570	2.10%	85	28	57
29-1126	Respiratory Therapists	1,090	1,580	490	4.50%	76	27	49
19-4099	Life, Physical, & Social Science Technicians, All Other	2,170	2,650	480	2.20%	127	79	48
29-2056	Veterinary Technologists & Technicians	1,230	1,680	450	3.60%	77	32	45
17-3022	Civil Engineering Technicians	1,360	1,760	400	3.00%	68	28	40
19-4031	Chemical Technicians	1,070	1,400	330	3.10%	58	25	33
29-2034	Radiologic Technologists & Technicians	1,850	2,160	310	1.70%	72	41	31
29-2012	Medical & Clinical Laboratory Technicians	2,000	2,290	290	1.50%	76	47	29
29-2031	Cardiovascular Technologists & Technicians	510	680	170	3.40%	28	11	17
31-2021	Physical Therapist Assistants	530	700	170	3.20%	33	16	17
17-3026	Industrial Engineering Technicians	890	1,050	160	1.80%	34	18	16
17-3025	Environmental Engineering Technicians	430	570	140	3.30%	23	9	14
17-3027	Mechanical Engineering Technicians	740	880	140	1.80%	29	15	14
19-4021	Biological Technicians	840	970	130	1.50%	33	20	13
29-2032	Diagnostic Medical Sonographers	450	560	110	2.40%	21	10	11
17-3024	Electro-Mechanical Technicians	450	510	60	1.30%	15	9	6
31-2011	Occupational Therapist Assistants	210	270	60	3.10%	12	6	6
19-4091	Environmental Science & Protection Technicians, Including Health	260	310	50	2.20%	14	9	5
19-4041	Geological & Petroleum Technicians	360	400	40	1.00%	12	8	4
29-2033	Nuclear Medicine Technologists	210	250	40	1.80%	9	5	4
19-4092	Forensic Science Technicians	140	170	30	2.30%	8	5	3
Nov-61	Funeral Directors	270	290	20	0.90%	7	5	2
19-4011	Agricultural & Food Science Technicians	150	150	0	-0.20%	4	4	0
19-4093	Forest & Conservation Technicians	440	420	-20	-0.50%	14	16	-2
17-3029	Engineering Technicians, Ex Drafters, All Other	400	370	-30	-0.90%	6	9	-3

**Denver Metro Region
Occupational Employment Statistics Wage Data (2003)**

SOC Code	SOC Occupational Title	Vacancies Estimated	Average JVS Wage	Average Wages			Percentile Distribution				
				Entry- Level	Overall	Experienced	10th	25th	50th	75th	90th
29-1111	Registered Nurses	1,210	\$24.50	\$19.91	\$25.68	\$28.57	\$18.70	\$22.03	\$25.42	\$28.90	\$34.26
41-2011	Cashiers	520	\$8.09	\$7.12	\$9.68	\$10.97	\$6.59	\$7.60	\$8.85	\$10.88	\$15.12
35-3031	Waiters and Waitresses:	471	\$2.52	\$6.09	\$7.68	\$8.47	\$5.70	\$6.13	\$6.85	\$9.20	\$11.05
41-2031	Retail Salespersons	450	\$8.73	\$7.23	\$11.95	\$14.31	\$6.68	\$7.90	\$9.68	\$13.17	\$19.35
37-3011	Landscaping and Groundskeeper Workers	378	\$8.23	\$8.13	\$11.04	\$12.49	\$7.56	\$8.76	\$10.21	\$12.67	\$16.30
35-3021	Combined Food Preparation and Serving Workers	320	\$6.61	\$6.69	\$8.19	\$8.94	\$6.21	\$7.12	\$8.01	\$9.03	\$10.59
43-4051	Customer Service Representatives	252	\$10.94	\$10.33	\$14.60	\$16.74	\$9.55	\$11.35	\$13.79	\$17.09	\$20.89
53-7062	Laborers and Freight, Stock, and Material Movers	243	\$9.25	\$8.54	\$11.28	\$12.65	\$7.75	\$9.35	\$10.88	\$13.03	
39-9032	Recreation Workers	213	\$9.59	\$7.74	\$11.68	\$13.64	\$7.29	\$8.55	\$10.60	\$13.68	\$18.00
53-3032	Truck Drivers Heavy and Tractor- Trailer	204	\$15.24	\$13.83	\$17.50	\$19.34	\$12.86	\$14.93	\$16.97	\$20.29	\$22.99
33-9092	Lifeguards, Ski Patrol, and Other Recreational Protective Service Workers	186	\$8.90								
15-1032	Computer Software Engineers, Systems Software	180	\$21.09	\$27.43	\$38.11	\$43.45	\$25.06	\$30.63	\$37.65	\$45.38	\$53.69
53-3033	Truck Drivers Light or Delivery Services	178	\$8.85	\$8.80	\$13.86	\$16.39	\$7.78	\$10.21	\$13.26	\$16.91	\$21.14
43-5032	Dispatchers, Except Police, Fire, and Ambulance	166	\$9.50	\$10.80	\$15.80	\$18.30	\$9.92	\$12.13	\$15.48	\$18.98	\$22.47
27-2023	Umpires, Referees, and Other Sports Officials	151	\$14.20	\$17,022	\$25,211	\$29,306	\$15,414	\$19,148	\$24,756	\$29,576	
11-3031	Financial Managers	146	\$29.63	\$27.03	\$44.05	\$52.56	\$24.69	\$30.49	\$39.71	\$51.81	\$69.99
13-2011	Accountants and Auditors	137	\$25.28	\$18.04	\$29.40	\$35.09	\$16.81	\$20.04	\$25.03	\$33.06	\$44.50
15-1031	Computer Software Engineers, Applications	136	\$35.65	\$23.72	\$38.51	\$45.91	\$20.87	\$27.37	\$36.53	\$43.99	\$56.19
43-6014	Secretaries, Except Legal, Medical, and Executive	129	\$11.66	\$11.12	\$14.90	\$16.79	\$10.24	\$12.20	\$14.67	\$17.29	\$2
39-9031	Fitness Trainers and Aerobics Instructors	128	\$15.29	\$9.20	\$16.26	\$19.79	\$8.18	\$10.50	\$15.65	\$20.42	\$25.89
11-3021	Computer and Information Systems Managers	126	\$35.31	\$32.09	\$48.88	\$57.28	\$28.32	\$37.50	\$46.91	\$57.96	
11-9111	Medical and Health Services Managers	124	\$27.37	\$23.96	\$36.81	\$43.24	\$21.82	\$27.10	\$34.27	\$43.58	\$54.01
37-3019	Grounds Maintenance Workers, all other	123	\$6.41								

Resources

Data Sources

<http://www.state.co.us/ccche/I&R/index.html>

CCHE Information and Research

www.fedstats.gov

"The gateway to statistics from over 100 U.S. Federal agencies"

<http://www.usda.gov/>

United State Department of Agriculture

<http://www.bea.doc.gov/>

Bureau of Economic Analysis

- Local area personal income by county, metropolitan area, BEA Economic areas, State Metropolitan /non metropolitan
 - Economic articles from the survey of current business
 - National Data provide bench mark information
 - Methodologies, papers and presentations
- <http://www.census.gov/>

U.S. Census Bureau

<http://factfinder.census.gov/servlet/BasicFactsServlet>

American Fact Finder - Part of the US Census Bureau – handy quick fact finder

<http://quickfacts.census.gov/qfd/index.html>

US Census Bureau state and county quick facts

http://www.cde.state.co.us/index_stats.htm

Colorado Department of Education Statistics

http://www.state.co.us/business_dir/chambers.html

Local chambers of commerce

<http://www.dlg.oem2.state.co.us/demog/demog.html>

Colorado Department of Local Affairs – Demography Data - County population projections etc.

<http://www.cbef-colorado.com/>

Colorado Regional Economic Forecasting - Local, regional and national economies

<http://navigator.cdle.state.co.us/>

Colorado Dept. of Labor and Employment Navigator

- Occupational projections for Colorado State and Denver Metro by Occupational group
 - Occupational Wages by County and occupational group
 - Labor force by County, Annual and monthly data
 - Employers' listing by county
- Industry growth by county (employment)

<http://www.dola.state.co.us/index.htm#>

Colorado Dept. of Local Affairs

- Data on population
- Households by income
- Various county data
- Mapping data
- Colorado Economic & Demographic Information System (CEDIS)
- County and Municipal Financial Data

http://www.state.co.us/gov_dir/govnr_dir/ospb/

Office of State Planning and Budgeting

- Special reports and research section can be a useful resource for writing narrations, bench mark information etc.

<http://www.cde.state.co.us/cdereval/2000GradsbySchoolLink.htm>

Colorado Department of Education - Graduates by high school

<http://www.ccsse.org/>

Community College Survey of Student Engagement

<http://davidmlane.com/hyperstat/index.html>

Statistics Helps site