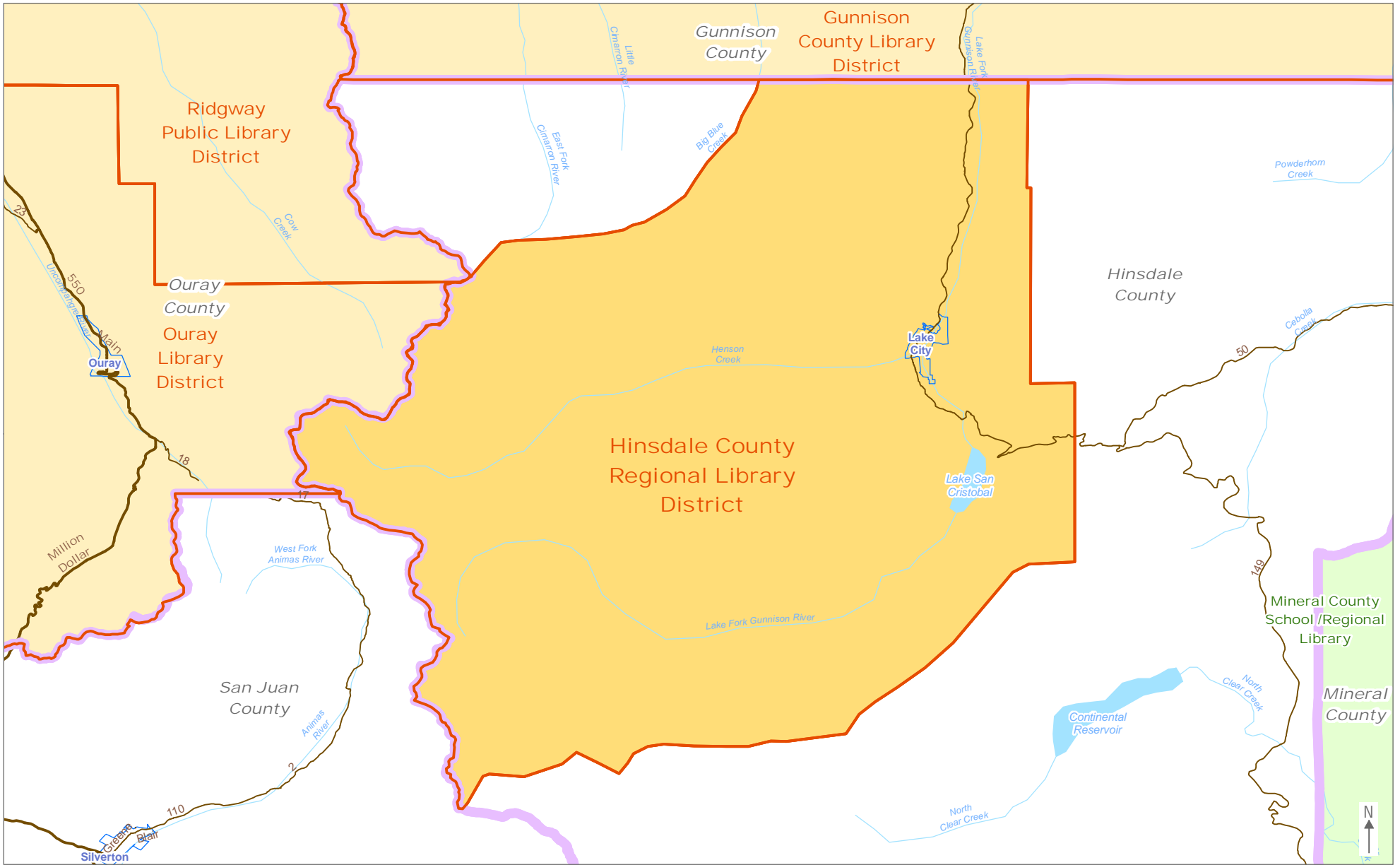


Every effort has been made to provide accurate and useful maps of Colorado's public library districts as required by Colo. Rev. Stat. §24-90-105 (1)(m). The maps were created using the best GIS data available as of May 2011. As always, due to differences between data, software programs, and GIS methodologies, these maps should not be taken as definitive proof of library district boundaries. For accurate, detailed data about which properties lie within a library district's boundaries, please contact the library district and/or the appropriate county assessor office.

Note: any white areas on the map indicate unserved areas, i.e., areas that do not fall within the legal service area of a Colorado public library. Policies on serving residents in unserved areas or between boundaries can vary by library jurisdiction.

Questions? Please contact the Colorado State Library at 303-866-6900.



- Hinsdale County Regional Library District
- Other Library Districts
- Multi-Jurisdictional Libraries
- County Boundary
- City/Town/Place Boundary

Hinsdale County Regional Library District

The Hinsdale County Regional Library District boundary, as specified in establishment documents, is coterminous with Hinsdale County Tax Areas 1, 2, and 4 and the Town of Lake City.

LIBRARY DISTRICT UPDATE

Colorado State Library